



Offering 25 Lots

OF PREMIUM LIMOUSIN & LIM-FLEX GENETICS

The entire auction will be by slide presentation.

WEDNESDAY

JULY 3, 2019 • 5:30 p.m.

Attitude adjustment hour 4:30 p.m.

Selling in catalog order

*in conjunction with the All-American Limousin Futurity
held at the Boot Daddy Saloon on the
Ozark Empire Fairgrounds in Springfield, MO.*

MARKETING TEAM:



Ken Holloway

mobile: 580/581-7652 • acs@americancattleservices.com



Mark Smith

mobile: 515/229-5227 • grgenetics@aol.com



Kiley McKinna

mobile: 402/350-3447 • mcmarketingsales@aol.com



Randall O. Ratliff

mobile: 615/330-2735 • randy@rrmktg.com

AUCTIONEER & LIVESTOCK PRESS REPRESENTATIVES:

C.K. "Sonny" Booth Auctioneer
Andy Rest *Limousin Today*

*All lots sell under the standard terms and conditions
of the North American Limousin Foundation.*

Contributors:

ATAK LIMOUSIN

436 140th St. • Avon, IL 61415
Andy Schmalshof (309) 333-0029
Adam Schmalshof (309) 333-3044

COLTON BARTON

11965 FM 1105 • Jarrell, TX 76537
(512) 966-2617

CIRCLE L LIMOUSIN & LAND CO.

4306 W. Sterling Rd., Burbank, OH 44214
Cory Baker (330) 352-1845

CROSS CREEK FARMS

1114 Daisy Land • Jonesborough, TN 37659
David Byers (423) 963-2744

DAVIS LIMOUSIN RANCH

12500 Hwy. 279 • Brownwood, TX 76801
Brad Davis (325) 647-7681

DIAMOND HILL CATTLE CO.

1520 Camden Way • Nichols Hills, OK 73116
Mark Barker (405) 520-5846

EDWARDS LAND & CATTLE CO.

290 Willard Edwards Rd. • Beulaville, NC 28518
Dexter Edwards (910) 298-3012
Nicholas Edwards (910) 290-1424

FREED LIVESTOCK

46 Lakeview Drive • Fairbury, IL 61739
Jon Freed (815) 867-0488
Ron Freed (309) 825-2989

TRISTAN GULOTTA

52448 Alessi Rd. Ext. • Independence, LA 70443
(985) 662-1561

HALL CATTLE CO.

PO Box 168 • Sweetwater, TX 79556
Lance Hall (325) 235-4345

KLS FARMS

9296 Hwy. 4 • Chatham, LA 71226
Kevin Smith (318) 245-4607

LAMKINS CATTLE COMPANY

16961 Oleander Lane • Lebanon, MO 65536
Phil Lamkins (417) 532-5755 • (417) 718-8590

LAWRENCE FAMILY LIMOUSIN

P.O. Box 299 • Anton, TX 79313
Bruce Lawrence (806) 790-2535
Amber Lawrence (806) 773-6043

LINHART LIMOUSIN

27195 175th St. • Leon, IA 50144
Charles Linhart (641) 340-1306
Aaron Linhart (641) 414-5060

LONDON LIMOUSIN

PO Box 28 • Collinsville, TX 76233
(940) 367-1680

LONELY VALLEY SEEDSTOCK

270 5th St. • Creston, NE 68631
Chad Settje • (402) 910-5504

MUD CREEK CATTLE COMPANY

26140 75th Ave. • Dixon, IA 52745
Dave Book (563) 320-7343

PINEGAR LIMOUSIN

850 W. Farm Road 56 • Springfield, MO 65803
Ty Heavin (417) 839-5849

RED ROCK LIMOUSIN RANCH

4560 FM 999 • Gary, TX 75643
Cecil Osborn (903) 235-4102

THOMAS & SON FARMS

7249 Monroe Rd. • Boonsboro, MD 21713
Chris Thomas (301) 730-9561
Lonnie Thomas (301) 730-9571

WILDER FAMILY LIMOUSIN

PO Box 127 • Snook, TX 77878
Jay Wilder (979) 268-5491

HEIFER PREGNANCY/EMBRYOS



AUTO FEDORA • Dam of Lots 1 & 2



COLBURN PRIMO 5153 • Sire of Lot 1



SILVEIRAS STYLE 9303 • Sire of Lot 2

Lot
1

HEIFER PREGNANCY

LIM-FLEX 46.5% HOMO BLK DBL PLD
DUE: 1/11/2020

DAMERON FIRST CLASS
COLBURN PRIMO 5153
SILVEIRAS SARAS DREAM 1339
TMCK DURHAM WHEAT 6030X
AUTO FEDORA ET
WLR PRADA

EPDs	
CD:	12
BW:	1.7
WW:	68
YW:	103
MA:	16
TM:	50
CM:	9
SC:	0.8
DC:	12
YG:	-.21
CW:	17
RE:	.50
MB:	.03
SMI:	53

PINEGAR LIMOUSIN, MO

This is an exciting heifer pregnancy by Colburn Primo and the WLR Prada daughter, AUTO Fedora 222F. Primo is the impressive son of Dameron First Class. AUTO Fedora is a TMCK Durham Wheat daughter who impressed so many at Pinegar's sale. If you're looking for marketability, this heifer pregnancy is where it's at. Proven, elite genetics are behind this one and will take you to the top once she hits the ground.

Lot
2

FOUR EMBRYOS

LIM-FLEX 46.5% HOMO BLK DBL PLD

GAMBLES HOT ROD
SILVEIRAS STYLE 9303
SILVEIRAS ELBA 2520
TMCK DURHAM WHEAT 6030X
AUTO FEDORA ET
WLR PRADA

EPDs	
CD:	13
BW:	1.0
WW:	60
YW:	91
MA:	17
TM:	47
CM:	8
SC:	0.9
DC:	10
YG:	-.23
CW:	11
RE:	.46
MB:	.14
SMI:	55

KLS FARMS, LA

KLS Farms is proud to offer these four eggs by Silveiras Style and AUTO Fedora. They will be 50% Lim-Flex, double polled and homozygous black. Silveiras Style's presence in the industry of maternal giants is one for the record books as he has sired more Grand and Reserve Champion show females than any other bull of modern history. AUTO Fedora is a TMCK Durham Wheat daughter from the famed WLR Prada female. The potential in this mating will blow your mind. This is such an exciting opportunity!

HEIFER PREGNANCY/EMBRYOS



LFL FALLEN ANGEL • Full sib to Lot 3



ALMA JO DHVO 723R • Dam of Lot 3



TASF CROWN ROYAL 960C • Sire of Lot 4



LFL DAISY 6061D • Dam of Lot 4



HEIFER PREGNANCY

PUREBRED 79% HOMO BLK DBL PLD

MAGS WINSTON
MAGS AVIATOR
 MAGS XTRA REST
 GPFF BLAQUE RULON
ALMA JO DHVO 723R
 AMY JO DHAN 2L

EPDs

CD: 13
 BW: 1.1
 WW: 60
 YW: 89
 MA: 18
 TM: 47
 CM: 8
 SC: .3
 DC: 17
 YG: -.43
 CW: 13
 RE: 76
 MB: -.11
 SMI: 48

LAWRENCE FAMILY LIMOUSIN, TX

The recip is a commercial black cow located at the Fletcher/Sterling, OK, Trans Ova. Buyer is responsible for picking up recip. Due date information will be available sale day. Alma Jo is a flushmate to Ace, Deuce, Trey and Ashton Jo. Full sisters to the (Alma Jo x Aviator) mating have been successfully campaigned across the country. LFL Daisy won many banners, including the 2018 FWSS Grand Champion Heifer in the open show and the 2018 NJLS&C Reserve Grand Champion Limousin Pair for Colton Barton. LFL Emma Jo won her class at the 2018 NJLS&C for McKinley Begert. LFL Xtravagent shown by Alyson Runnels was third best in Division III at the 2018 NJLS&C and Division III Champion in the 2018 AALF. LFL Estelle shown by Colton Barton, won her class at the 2018 NJLS&C. LFL Franny Jo was named Division III Champion at the 2019 Texas Field Day shown for Boone Begert. LFL Fabrina, shown by Chris Barton, was Reserve Division Champion at the 2019 FWSS open show. LFL Frederica was the high-selling heifer at the 2019 Cowtown Classic in Ft. Worth and went on to win her class at the FWSS open show. LFL Fallen Angel topped the 2019 LFL Spring Heifer Calf Sale at \$60,000 to Colton Barton. There are six of these flushmates entered in this year's National Junior Show. If you are looking to invest in a consistent mating with championship abilities and donor cow potential, then bid with confidence on this high percentage pregnancy!



THREE IVF EMBRYOS

PUREBRED 90% HOMO BLK HOMO PLD

DHVO DEUCE 132R
TASF CROWN ROYAL 960C ET
 TASF WHISKEY LULLABY 357W
 MAGS AVIATOR
LFL DAISY 6061D ET
 ALMA JO DHVO 723R

EPDs

CD: 10
 BW: 2.1
 WW: 71
 YW: 103
 MA: 18
 TM: 54
 CM: 5
 SC: 0.7
 DC: 12
 YG: -.53
 CW: 9
 RE: .88
 MB: -.35
 SMI: 43

COLTON BARTON, TX

Offering 3 IVF embryos with one guaranteed pregnancy. After a very productive flush, we have decided to offer the top end of our genetics. By the widely known TASF Crown Royal, who undoubtedly stamps his progeny with high quality look and design, out of LFL Daisy 6061D. Daisy was the 2018 FWSS Grand Champion Limousin Female and Reserve Purebred Cow-Calf Pair at the 2018 Junior Nationals, along with various other trips to the backdrop around the state of Texas.

EMBRYOS



LH BELLE 015B • Maternal sister to Lots 5 & 6

The influence of a strong cow family should never be underestimated! The Touch Me Gently 798T donor, daughter of past National Western Grand Champion Female, Carrouseles Pina Colada, is certainly a classic example. She is a full sister to MAGS Uahuka, the 2009 AALF Grand Champion Female and the 2010 NWSS Grand Champion Female and dam of the widely used AI sire, MAGS Y-Axis.

Touch Me Gently has done her part in sustaining her lineage—most notably by producing LH Belle 015B, the Upshot daughter campaigned in 2015 and 2016 by Colt Cunningham. A full sister topped the 2016 Hall-CHR Sale at \$15,000, and another daughter traded for \$20,000 at the 2016 Pinegar Select Breeders Sale.

Touch Me Gently sons are equally popular and doing a good job. DHIL Colt, syndicated in the 2017 Hall-CHR Bull Sale, and six sons sold in the 2018 Hall-CHR Bull Sale to average \$8,000, including the top seller, CHR Eight Ball.

Touch Me Gently has worked extremely well with Angus bulls creating high-quality Lim-Flex genetics. The EXAR Upshot, HA Cowboy Up and PVF Insight progeny have been exceptionally gratifying. Great things can be expected by Basin Payweight 1682 and the Dameron Best In Class offspring.



FOUR HEIFER EMBRYOS

LIM-FLEX 50% HOMO BLK HOMO PLD

EXG RS FIRST RATE S903 R3
DAMERON BEST IN CLASS
 DAMERON NORTHERN MISS 311
 DHVO DEUCE 132R
PBRs TOUCH ME GENTLY 798T
 CARROUSELES PINA COLADA

EPDs
CD: 10
BW: 1.5
VW: 69
YW: 108
MA: 23
TM: 57
CM: 6
SC: 0.7
DC: 11
YG: -.21
CW: 40
RE: .69
MB: -.04
SMI: 51

DIAMOND HILL CATTLE CO., OK & HALL CATTLE CO., TX



DAMERON BEST IN CLASS • Sire of Lot 5



FOUR EMBRYOS

LIM-FLEX 50% DBL BLK HOMO PLD

BASIN PAYWEIGHT 006S
BASIN PAYWEIGHT 1682
 21AR O LASS 7017
 DHVO DEUCE 132R
PBRs TOUCH ME GENTLY 798T
 CARROUSELES PINA COLADA

EPDs
CD: 12
BW: 0.2
VW: 73
YW: 113
MA: 25
TM: 61
CM: 8
SC:
DC: 13
YG: -.09
CW: 39
RE: .46
MB: .15
SMI: 58

DIAMOND HILL CATTLE CO., OK & HALL CATTLE CO., TX



BASIN PAYWEIGHT 1682 • Sire of Lot 6



LLJB ABSOLUTE STYLE 3056A • Dam of Lot 7



THREE EMBRYOS

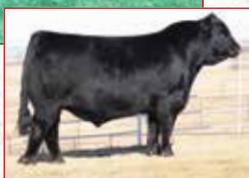
LIM-FLEX 50% DBL BLK HOMO PLD

MAGS APPLESEED
MAGS CABLE
 MAGS ZEQUIN
 SILVEIRAS STYLE 9303
LLJB ABSOLUTE STYLE 3056A
 MAGS WASSAIL

EPDs
CD: 14
BW: 0.4
VW: 68
YW: 103
MA: 18
TM: 53
CM: 9
SC: 1.2
DC: 12
YG: -.20
CW: 28
RE: .59
MB: .24
SMI: 61

LINHART LIMOUSIN, IA

The mating presented here represents the apex of the Lim-Flex seedstock business. The sire, MAGS Cable, is without question one of the hottest Lim-Flex bulls on the market. The dam is none other than LLJB Absolute Style 3056A. During her show career, her accomplishments were unmatched; and now that she has entered production, her calves have been some of the most sought after in the industry.



MAGS CABLE • Sire of Lot 7

Lot
8

THREE EMBRYOS

LIM-FLEX 50% HOMO BLK HOMO PLD

MAGS APPLSEED
MAGS CABLE
MAGS ZEQUIN
KAJO RESPONDER 120R
MAGS THEATRICAL
FINKS BEAUTY 373 1134 416

EPDs
CD: 12
BW: 1.4
WW: 69
YW: 107
MA: 17
TM: 51
CM: 5
SC: 1.1
DC: 12
YG: -.15
CW: 35
RE: .58
MB: .37
SMI: 66

LINHART LIMOUSIN, IA

Looking for proven elite genetics? Well stop and check out these embryos. The donor dam, MAGS Theatrical, is a sound, bold-ribbed, attractive female who boasts north of 35 registered calves to her name. The ever-popular Lim-Flex AI sire in this designer mating, MAGS Cable, is creating a buzz around the country for consistently creating progeny are known their natural growth performance, structural correctness and body depth. This elite mating promises to produce homozygous polled, good-numbered cattle with exceptional phenotype that project to top sales and compete at the highest level in show ring's across the country. Invest today.



MAGS THEATRICAL • Dam of Lot 8



MAGS CABLE • Sire of Lot 8

Lot
9

FOUR EMBRYOS

LIM-FLEX 50% DBL BLK HOMO PLD

MAGS APPLSEED
MAGS CABLE
MAGS ZEQUIN
COTTAGE LAKE BORDER AGEN
PBRS DESTINY 6285D
P BAR S 1030

EPDs
CD: 12
BW: .8
WW: 73
YW: 113
MA: 18
TM: 55
CM: 7
SC: 1.2
DC: 13
YG: -.21
CW: 26
RE: .60
MB: .14
SMI: 59

RED ROCK LIMOUSIN, TX

Study this amazing genetic feature! This is your opportunity to attain genetics by this exceptional 50% Lim-Flex female presented by Red Rock Limousin and comes straight from the heart of the long-running P Bar S Ranch. She was one of the top sellers at the 11th annual P Bar S production sale where her combination of quality, rib shape, muscle pattern, udder conformation and structural integrity sent the buying crowd into a frenzy. She is a daughter of the ever-popular highly syndicated deceased sire, Cottage Lake Border Agent, who has left some amazing progeny to say the least. This daughter is homozygous polled and made as good as you can imagine. This female is the result of blending the best purebred Angus with the best of purebred Limousin. On the paternal side of this genetic offering, we have elected to offer you four embryos by the ever popular and one of the hottest AI sires on the open market, MAGS Cable. Bid with confidence July 3.



PBRS DESTINY 6285D • Dam of Lot 9



MAGS CABLE • Sire of Lot 9

Lot
10

THREE EMBRYOS

LIM-FLEX 72% HOMO BLK HOMO PLD

MAGS XYLOID
ELCX KINGS LANDING 599D ET
WLR PRADA
EF XCESSIVE FORCE
ELCX ELEVATE 684E ET
DFLC HBHPC 1S

EPDs
CD: 13
BW: -.1
WW: 57
YW: 88
MA: 17
TM: 46
CM: 8
SC: 0.9
DC: 13
YG: -.33
CW: 17
RE: .54
MB: -.09
SMI: 47

CROSS CREEK FARMS, TN

Offering three eggs by ELCX Kings Landing and ELCX Elevate 684E. These will be 68.5% Lim-Flex, homozygous polled and homozygous black. ELCX Elevate 684E is an impressive EF Xcessive Force daughter Julia Weaver campaigned successfully last year. ELCX Kings Landing is the 2016 NAILE Reserve National Champion bull and out of the great MAGS Xyloid bull. This is your chance to compete at a high level with superior, proven genetics.



ELCX ELEVATE 684E • Dam of Lot 10



ELCX KINGS LANDING 599D • Sire of Lot 10

EMBRYOS



ELCX ELEVATE 684E • Dam of Lot 11



TASF CROWN ROYAL 960C • Sire of Lot 11

Lot
11

THREE EMBRYOS

PUREBRED 81%

HOMO BLK

HOMO PLD

DHVO DEUCE 132R
TASF CROWN ROYAL 960C ET
 TASF WHISKEY LULLABY 357W
 EF XCESSIVE FORCE
ELCX ELEVATE 684E ET
 DFCL HBHPC 1S

EPDs
CD: 11
BW: 1.1
WW: 70
YW: 104
MA: 17
TM: 52
CM: 7
SC: 1.1
DC: 8
YG: -.45
CW: 18
RE: .81
MB: -.21
SMI: 48

CROSS CREEK FARMS, TN

Cross Creek is excited to be offering this special opportunity. Three eggs by TASF Crown Royal out of ELCX Elevate. They will be 81% Limousin, homozygous black and homozygous polled. TASF Crown Royal is the incredibly impressive DHVO Deuce son who captured everyone's attention in Denver in 2017 when he was named National Champion bull. He's got a great, balanced set of numbers and a flawless phenotype. ELCX Elevate is the superb daughter of EF Xcessive Force and from a JCL Lodestar daughter, DFCL HBHPC who has numerous championship banners. These calves will be the talk of the town when they hit the ground in your pasture!



FC DENVER GIRL • Dam of Lots 12 & 13

The opportunity exists in this very lot to get a great one out of these elite matings! The donor dam is an elite daughter of the former NAILE Champion, CYWD Zesty 22Z, who combines rib and muscle to the highest degree. If you appreciate cattle that are bold in their rib shape, loads of center body and expressive in their muscle pattern then you'll love this high performance donor dam. The two elite AI sires represented in this A/B lot are well documented and leave little doubt this blending of genetics promises results that are sure to impress.

Lot
12A

THREE EMBRYOS

LIM-FLEX 67%

DBL BLK

DBL PLD

DHVO DEUCE 132R
TASF CROWN ROYAL 960C ET
 TASF WHISKEY LULLABY 357W
 SILVEIRAS S SIS GQ 2353
FC DENVER GIRL
 CYWD ZESTY 22Z

EPDs

CD: 9
BW: 2.1
WW: 70
YW: 103
MA: 21
TM: 56
CM: 5
SC: 1.0
DC: 8
YG: -.43
CW: 6
RE: .66
MB: -.12
SMI: 50

FREED LIVESTOCK, IL



TASF CROWN ROYAL 960C • Sire of Lot 12A

Lot
12B

THREE EMBRYOS

LIM-FLEX 45%

DBL BLK

DBL PLD

MAGS APPLE JACK
MAGS FIRESTONE 218F
 MAGS DAYSTAR
 SILVEIRAS S SIS GQ 2353
FC DENVER GIRL
 CYWD ZESTY 22Z

EPDs
CD: 10
BW: 0.8
WW: 64
YW: 103
MA: 23
TM: 55
CM: 5
SC: 0.8
DC: 12
YG: -.22
CW: 16
RE: .38
MB: .12
SMI: 56

FREED LIVESTOCK, IL



MAGS FIRESTONE • Sire of Lot 12B



THREE EMBRYOS

LIM-FLEX 66% DBL BLK HOMO PLD

- MAGS APPLE JACK
- MAGS FIRESTONE 218F**
- MAGS DAYSTAR
- DHVO DEUCE 132R
- MAGS WITH CLASS**
- MAGS PHYLLO

THOMAS & SON FARMS, MD

EPDs
CD: 10
BW: 0.5
WW: 61
YW: 98
MA: 22
TM: 52
CM: 5
SC: 1.0
DC: 12
YG: -.36
CW: 24
RE: .65
MB: -.20
SMI: 45



MAGS WITH CLASS • Dam of Lots 13A & 13B



THREE EMBRYOS

LIM-FLEX 66% DBL BLK HOMO PLD

- MAGS APPLE JACK
- MAGS FIRESTONE 218F**
- MAGS DAYSTAR
- DHVO DEUCE 132R
- MAGS WITH CLASS**
- MAGS PHYLLO

THOMAS & SON FARMS, MD

EPDs
CD: 10
BW: 0.5
WW: 61
YW: 98
MA: 22
TM: 52
CM: 5
SC: 1.0
DC: 12
YG: -.36
CW: 24
RE: .65
MB: -.20
SMI: 45



MAGS FIRESTONE • Sire of Lots 13A & 13B

This marks a great opportunity to invest in both an amazing donor and sire. First the donor, MAGS With Class produced numerous national champions like the 2018 Reserve Grand Champion National Junior Show Lim-Flex Heifer. With Class comes to us in a sound-footed, square-hipped, big-bodied, attractive package. On the sire's side of the equation, here's your first opportunity to invest in the syndicated, 2019 National Western Stock Show Grand Champion bull who impressed people with his sheer mass and structural integrity, MAGS Firestone. Without question, this high powered mating promises to hit a home run! Bid with confidence.



THREE EMBRYOS

LIM-FLEX 61.5% DBL BLK HOMO PLD

- MAGS APPLE JACK
- MAGS FIRESTONE 218F**
- MAGS DAYSTAR
- MAGS AVIATOR
- CELL 7134E**
- EF XPECT THE BEST

WILDER FAMILY LIMOUSIN, TX

This exceptionally well-designed, double homozygous, 2018 AALF Reserve Champion Female has developed into a truly unique Lim-Flex donor. Visually flawless best describes this big-footed, free-moving, sleek-fronted, big-bodied, square-hipped female who has a perfectly balanced conformation. She is sired by the widely popular \$32,500 AI sire MAGS Aviator and out of a high-quality, maternal appearing donor who touts outcross lineage. Combine all of her exceptional attributes with the widely acclaimed and nationally recognized 2019 Denver Champion Bull, MAGS Firestone, the resulting offspring promise to be elite breeding pieces. Bid with confidence.

EPDs
CD: 11
BW: 0.6
WW: 65
YW: 106
MA: 21
TM: 54
CM: 6
SC: 0.5
DC: 13
YG: -.3
CW: 23
RE: .62
MB: -.09
SMI: 49



CELL 7134E • Dam of Lot 14



MAGS FIRESTONE • Sire of Lot 14

EMBRYOS



MAGS AMERICAN BEAUTY • Dam of Lots 15A & 15B

This genetic consignment epitomizes the crossroads of where phenotypic quality, huge numbers and genetic diversity meet. These designer matings offer you the opportunity to invest in some of the breed's freshest and most industry-relevant genetics. The imagination runs wild when you project the boundless possibilities of the future offspring of these breed standouts. The numerical giant, MAGS American Beauty, a daughter of the deceased MAGS Winston AI sire, possess a combination of structural integrity, body depth and fleshing ability even the most discriminating cattlemen can appreciate. Her offspring to date have been exceptionally high performing and marketable! We feel these matings speak for themselves and represents the progressive direction of the acclaimed ATAK Limousin breeding program. We invite you to appraise the unmatched genetic value on offer.

Lot
15A

FOUR EMBRYOS

LIM-FLEX 53%

DBL BLK

HOMO PLD

— MAGS APPLE JACK
MAGS FIRESTONE 218F
 — MAGS DAYSTAR
 — MAGS WINSTON
MAGS AMERICAN BEAUTY
 — MAGS YAMMERS

EPDs
CD: 11
BW: 1.0
WW: 73
YW: 119
MA: 24
TM: 60
CM: 6
SC: -.6
DC: 14
YG: -.35
CW: 34
RE: .79
MB: .07
SMI: 58

ATAK LIMOUSIN, IL



MAGS FIRESTONE • Sire of Lot 15A

Lot
15B

FOUR EMBRYOS

LIM-FLEX 50%

HOMO BLK

HOMO PLD

— TMCK CASH FLOW 247C
TNGC EMPIRE 736E
 — MAGS BETH ET
 — MAGS WINSTON
MAGS AMERICAN BEAUTY
 — MAGS YAMMERS

EPDs
CD: 11
BW: 1.5
WW: 85
YW: 137
MA: 21
TM: 63
CM: 6
SC: 0.9
DC: 16
YG: -.22
CW: 40
RE: .88
MB: .27
SMI: 67

ATAK LIMOUSIN, IL



TNGC EMPIRE 736E • Sire of Lot 15B



SBLX ZANE • Dam of Lot 16

Lot
16

THREE EMBRYOS

LIM-FLEX 56%

BLK

DBL PLD

— EF XCESSIVE FORCE
RLBH AIR FORCE ONE
 — EF YAFFA 821Y
 — MAGS WINSTON
SBLX ZANE
 — SBLX UNDERTHECOVERS 201U

EPDs
CD: 12
BW: -0.6
WW: 55
YW: 87
MA: 20
TM: 47
CM: 7
SC: 0.6
DC: 14
YG: -.15
CW: 34
RE: .50
MB: .35
SMI: 61

EDWARDS LAND & CATTLE CO., NC

Offering three eggs by RLBH Air Force One and SBLX Zane. The offspring will be 56% Lim-Flex, red and/or black and double polled. SBLX Zane is the \$55,000-valued female now owned by Edwards Land & Cattle Co. She is a daughter of MAGS Winston and is one of the finest red, polled females in our breed. Zane is sired by the deceased sire MAGS Winston and from the \$50,000-valued donor SBLX Underthecovers 201U, a daughter of GAR Predestined and from the national gold medal dam ELMW Ginnee P58G. Don't look past this special mating sale day!



RLBH AIR FORCE ONE • Sire of Lot 16



FIVE EMBRYOS

LIM-FLEX 65% HOMO BLK DBL PLD

- EF XCESSIVE FORCE
- RLBH AIR FORCE ONE**
- EF YAFFA 821Y
- AUTO CRUZE 132X
- MECC COVER GIRL ET**
- AUTO MABELLINE 267

LONDON LIMOUSIN, TX

A true opportunity to invest in proven championship genetics! The donor dam, MECC Cover Girl, is a sound, bold-ribbed, muscular, attractive-patterned female who has competed at the highest level across the country like winning the Limousin championship at the Houston Livestock Show in 2017. The sire in this designer mating, Air Force One, is a past champion who sires champions, and is known for producing progeny with supreme style and structural correctness. This elite mating promises to produce phenotypically exceptional calves that project to compete at the highest level in show ring's across the country. Invest today.

EPDs

CD: 11
 BW: -0.1
 WW: 61
 YW: 74
 MA: 21
 TM: 51
 CM: 7
 SC: 0.8
 DC: 15
 YG: -22
 CW: 27
 RE: .46
 MB: .16
 SMI: 57



MECC COVER GIRL • Dam of Lot 17



RLBH AIR FORCE ONE • Sire of Lot 17



FIVE EMBRYOS

LIM-FLEX 50% HOMO BLK HOMO PLD

- TMCK CASH FLOW 247C
- TNGC EMPIRE 736E**
- MAGS BETH ET
- LVLS TOP CRITERIA 8826P
- LVLS WITHOUT U 9098W**
- KG CAMMIE 326

LONELY VALLEY SEEDSTOCK, NE

This mating checks all of the boxes to make elite offspring. These five eggs are 50% Lim-Flex and double homozygous. TNGC Empire is a combination bull with a crazy good set of numbers. LVLS 9098 is an AHCC Westwind daughter from a daughter of LVLS Top Criteria. If you're looking for cattle that are performance oriented and packed full of style and grace, look no further! Unlimited potential here with trusted and proven genetics.

EPDs

CD: 13
 BW: 1.2
 WW: 77
 YW: 123
 MA: 23
 TM: 62
 CM: 8
 SC: 0.9
 DC: 14
 YG: -19
 CW: 21
 RE: .68
 MB: .29
 SMI: 66



LVLS WITHOUT U 9098W • Dam of Lot 18



TNGC EMPIRE 736E • Sire of Lot 18



THREE EMBRYOS

LIM-FLEX 50% HOMO BLK HOMO PLD

- TMCK CASH FLOW 247C
- TNGC EMPIRE 736E**
- MAGS BETH ET
- MAGS CABLE
- MAGS EVES WITH CABLE**
- LLJB 3153A

LAMKINS CATTLE, MO

High quality, stout, performance-oriented and huge numbers are terms that appropriately summarize this elite mating! The donor dam, MAGS Eves With Cable, is by one of the hottest bulls in the business, MAGS Cable, and from the elite donor who traces to the MAGS Fruitful cow family. The AI sire featured in this mating, TNGC Empire 736E, is one who is flawless at the ground—he's big footed, relaxed in his pasterns, deep bodied, square hipped and loaded with natural muscle shape. Numerically and visually, this mating should rate amongst the breed's best.

EPDs

CD: 12
 BW: 1.5
 WW: 83
 YW: 133
 MA: 21
 TM: 62
 CM: 6
 SC: 1.1
 DC: 15
 YG: -16
 CW: 35
 RE: .76
 MB: .26
 SMI: 66



MAGS EVES WITH CABLE • Dam of Lot 19

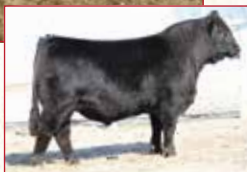


TNGC EMPIRE 736E • Sire of Lot 19

EMBRYOS



SL SUKI'S BELLE OFTHEBALL • Dam of Lot 20



TNGC EMPIRE 736E • Sire of Lot 20

Lot
20

FOUR EMBRYOS

LIM-FLEX 65.5%

HOMO BLK

HOMO PLD

TMCK CASH FLOW 247C
TNGC EMPIRE 736E
 MAGS BETH ET
 MAGS Y SO TANGLED
SL SUKI'S BELLE OFTHEBALL
 SUKI

EPDs
CD: 10
BW: 1.5
WW: 74
YW: 119
MA: 20
TM: 57
CM: 5
SC: 9
DC: 14
YG: -.26
CW: 29
RE: .76
MB: .09
SMI: 58

MUD CREEK CATTLE CO., IA

Matings of this caliber and quality are rarely offered to the buying public, but the 2019 Sale Of Sales is your opportunity to invest in some of our breed's elite. Study the unique combination of the recently syndicated, TNGC Empire 736E, and the tremendous purebred donor, which goes back to the Suki cow family that has produced several championship females for the Straight Family of Logan, Iowa, over the years. Simply stated, the rare combination of numbers, predictability and unique pedigree twist make this genetic lot one to invest in sale day.



SSTO ROUND ROBIN 3805A • Dam of Lot 21



SILVEIRAS STYLE 9303 • Sire of Lot 21

Lot
21

FIVE EMBRYOS

LIM-FLEX 37.5%

DBL BLK

DBL PLD

GAMBLES HOT ROD
SILVEIRAS STYLE 9303
 SILVEIRAS ELBA 2520
 GPFF BLAQUE RULON
SSTO ROUND ROBIN 3805A
 BOHI RED ROBIN 282R

EPDs
CD: 11
BW: 0.8
WW: 55
YW: 85
MA: 19
TM: 47
CM: 8
SC: 0.9
DC: 9
YG: -.21
CW: 8
RE: .45
MB: .30
SMI: 59

DAVIS LIMOUSIN RANCH, TX

These five eggs will be 37.5% Lim-Flex, homozygous black and double polled. Silveiras Style is the ever-popular and highly accomplished Angus sire who has captured the attention of so many. SSTO Round Robin is a maternal sister to MAGS Mazowski, MAGS Ur A Robin, SSTO Zayl and the \$68,000-valued donor at DeMar Farms, CFLX Robin 251Z. Bohi Red Robin 282R has produced great ones that are impacting breeding programs from coast to coast.



BSTR GOLD DIGGER • Dam of Lot 22



MAGSWL USUAL SUSPECT • Sire of Lot 22

Lot
22

THREE EMBRYOS

LIM-FLEX 75%

RED

DBL PLD

MAGS SASQUATCH
MAGSWL USUAL SUSPECT 538U
 MAGS PHANTOMS PRIZE
 MAGS WINSTON
BSTR GOLD DIGGER ET
 SBLX UNDERTHECOVERS 201U

EPDs
CD: 11
BW: 1.6
WW: 61
YW: 96
MA: 23
TM: 54
CM: 7
SC: 0.3
DC: 9
YG: -.42
CW: 25
RE: .77
MB: .00
SMI: 52

EDWARDS LAND & CATTLE CO., NC

These three embryos will be 75% Lim-Flex, red and/or black, and double polled. MAGSWL Usual Suspect 538 is the once Triple Crown winning bull for Wies and Magness. He is one of the breed's top red, homozygous polled purebred herd sires who continues to produce excellence. BSTR Gold Digger is loaded with some of the breed's finest genetics and will continue to produce breed-leading progeny for many years to come. She is powerfully constructed and packed full of design, femininity and soundness. She is sired by the now deceased, but still prominent Lim-Flex sire, MAGS Winston. We are super excited about these eggs!



FIVE EMBRYOS

LIM-FLEX 50% RED HOMO PLD

- HUNT TESTAMENT 40T
- HUNT CREDENTIALS 37C ET**
- JKTW WHISKEY RIVER 985W
- RED LAZY MC COWBOY CUT 26U
- MAJESTIC PEEK A BOO B127**
- SLGN PEEKS

EPDs
CD: 13
BW: 0.5
WW: 69
YW: 107
MA: 16
TM: 8
CM: 8
DC: 8
SC: 8
YG: -.12
CW: 36
RE: .32
MB: .21
SMI:

LONELY VALLEY SEEDSTOCK, NE

Stop and take look at this special opportunity. Offering five eggs by HUNT Credentials and the great Majestic Peek A Boo female. These offspring will be 50% Lim-Flex, red and/or black and homozygous polled. HUNT Credentials is a stellar outcross son of HUNT Testament. Majestic Peek A Boo is sired by Cowboy Cut whose progeny hang banners year after year. This is an offering you won't want to miss.



MAJESTIC PEEK A BOO B127 • Dam of Lot 23



HUNT CREDENTIALS 37C • Sire of Lot 23



AUTO EBONY 202E ET

LIM-FLEX (68/61.5) COW HET BLK (T) POLLED
BD: 1/1/2017 AUTO 202E LFF2123680

- CONNEALY CONSENSUS 7229
- MAGS ALI**
- MAGS YOKO
- EXLR LIMITED EDITION 765J
- MAGS MANUELA**
- AUTO CITY NIGHT 214H

EPDs
CD: 7
BW: 3.8
WW: 76
YW: 117
MA: 22
TM: 59
CM: 5
SC: 1.6
DC: 14
YG: -.31
CW: 31
RE: .56
MB: -.07
SMI: 53

CIRCLE L LAND & CATTLE, OH

Offering 5 Embryos to the Bull of Buyer's Choice
From one of the most elite females MAGS Manuela has ever produced—AUTO Ebony 202E. This donor is extra stout, sound from the ground up and loaded with performance. Ebony has earned the admiration of many. The breeding versatility this opportunity offers is unmatched. It's with great confidence we place this unique embryo moment on offer for your appraisal.



AUTO EBONY 202E • Lot 24



CELL EMPRESS 7343E

LIM-FLEX (52/47.5) COW HET BLK (P1) HOMO PLD (P1)
BD: 9/4/2017 CELL 7343E LFF2141260

- TMCK HYDRAULIC 17Y
- TMCK ARCHITECT 031A**
- TMCK LA VEDA 909Y
- EXAR DENVER 2002B
- AUTO MOONSHINE 280B ET**
- EF YADDA YADDA 809Y

EPDs
CD: 14
BW: 1.1
WW: 73
YW: 113
MA: 22
TM: 58
CM: 9
SC: 1.0
DC: 14
YG: -.28
CW: 26
RE: .84
MB: .03
SMI: 56

TRISTAN GULOTTA, LA

Offering 6 Embryos to the Bull of Buyer's Choice
A true sale highlight and chance to invest in fresh genetics! The donor dam, CELL Empress 7343E, is a double homozygous, stout, high performance, sound structured female who carries an abundance of rib shape. Numerically, she is outstanding, ranking in the top 35% or better for gestation, calving-ease, weaning, yearling, total maternal, calving ease maternal, scrotal, docility carcass weight, ribeye and mainstream terminal index. The bottom line, as the buyer you have the freedom to make a designer mating to fit your program using this bell-ringer of a donor.



CELL EMPRESS 7343E • Lot 25

Donated by: Sullivan Supply



Lot
26

TURBO FAN

DONATED BY SULLIVAN SUPPLY
PROCEEDS GO TO NALJA

Lot
27

AIR EXPRESS III BLOWER

DONATED BY SULLIVAN SUPPLY
PROCEEDS GO TO NALJA



Lot
28

LAKESIDE LIGHT STARTER KIT

DONATED BY SULLIVAN SUPPLY
PROCEEDS GO TO NALJA



Lot
29

FITTER PACK SUPPLIES

DONATED BY SULLIVAN SUPPLY
PROCEEDS GO TO NALJA



Lot
30

FRESH & FEMININE

DONATED BY SULLIVAN SUPPLY
PROCEEDS GO TO NALJA



Lot
31

JACKPOT SHOWBOX

DONATED BY SULLIVAN SUPPLY
PROCEEDS GO TO NALJA