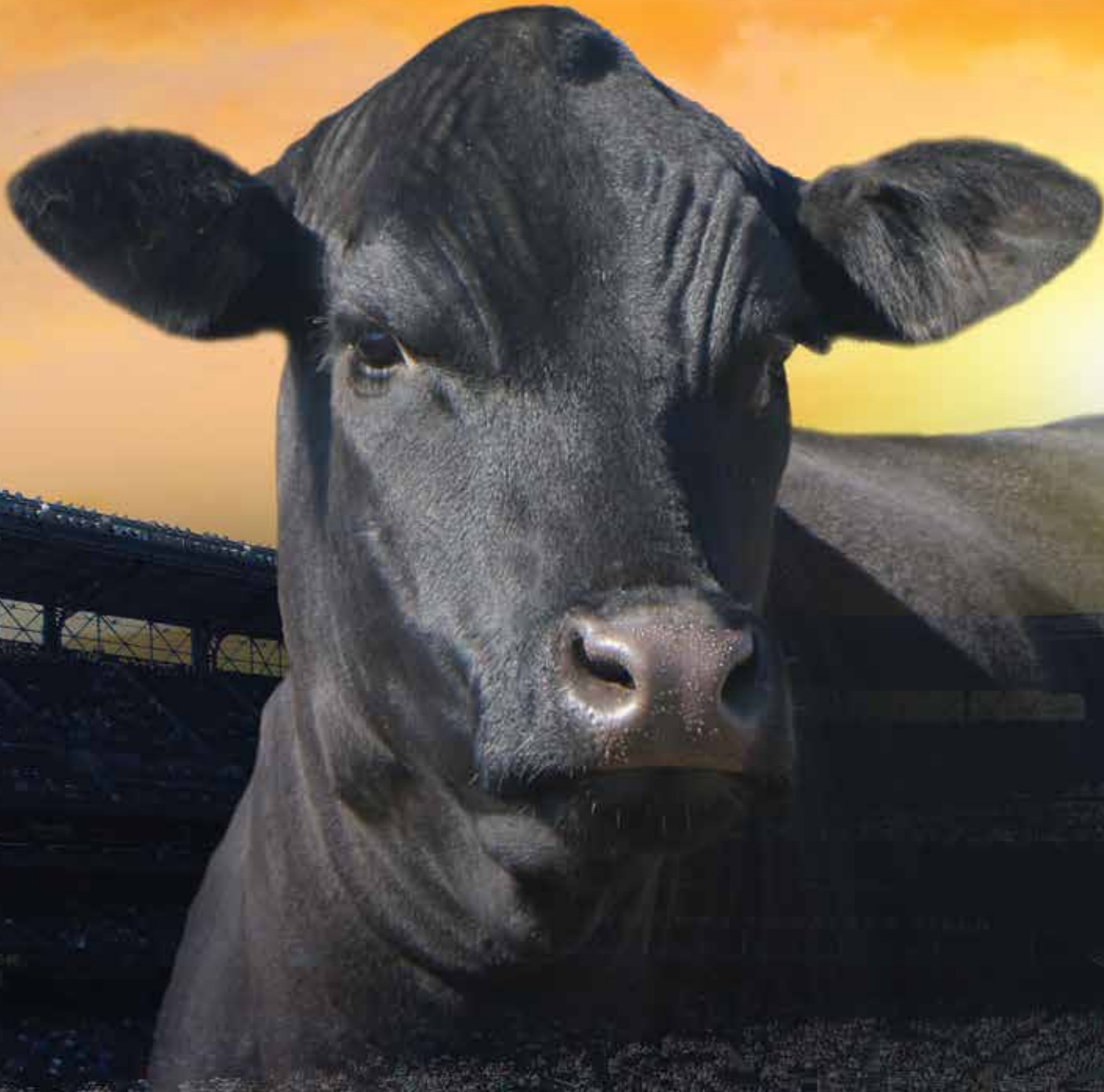


PINEGAR'S



ROAD
to
Springfield



Select
Breeders
LIMOUSIN SALE

APRIL 27, 2019 - 1 P.M.
AT PINEGAR LIMOUSIN - SPRINGFIELD, MISSOURI



OFFERING 20 SHOW HEIFERS & A PICK

Lots 1-21 | Pages 2-11



OFFERING 11 OPEN HEIFERS • 16 SPRING PAIRS

3 FALL PAIRS • 21 FALL BREDS

EMBRYOS • FLUSHES • SEMEN PACKAGES

Lots 30-101 | Pages 12-40

VIDEOS

View the Road to the Rockies Heifer Videos on Pinegar Limousin's FB Page

SCHEDULE OF EVENTS

FRIDAY, APRIL 26, 2019

Afternoon cattle available for viewing

SATURDAY, APRIL 27, 2019

8:00 a.m.....Coffee and Pastries

11:30 a.m.....Complimentary Beef Lunch

1:00 p.m.....Road to the Rockies Heifer Sale
followed by the Select Breeders Sale

CREDIT CARDS ACCEPTED



SALE-DAY PHONES

Ty Heavin.....	417.839.5849
Ed Pinegar.....	417.833.6784
Randy Ratliff.....	615.330.2735
Ken Holloway.....	580.581.7652
Kiley McKinna.....	402.350.3447
Bill Helton.....	256.962.0256
Mark Smith.....	515.229.5227

MARKETING TEAM

AMERICAN CATTLE SERVICES

Ken Holloway.....580.581.7652

GRASSROOTS CONSULTING

Mark Smith.....515.229.5227

HELTON CONSULTING

Bill Helton.....256.962.0256

MC MARKETING MANAGEMENT

Kiley McKinna.....402.350.3447

R&R MARKETING CO.

Randy Ratliff.....615.330.2735

AUCTIONEER

C.K. "Sonny" Booth

SALE HEADQUARTERS

HAMPTON INN & SUITES.....417.869.5548

2750 N. Glenstone Ave., Springfield, MO 65803

DRURY INN & SUITES.....417.863.8400

2715 N. Glenstone Ave., Springfield, MO 65803

TRUCKING

Will be available on site to haul purchases the day of the sale.

PAYMENT

Cattle must be paid for at the time of the sale unless prior arrangements are made.

ANNOUNCEMENTS

Announcements at the sale by the owners, auctioneers or marketing team take precedence over statements in the sale catalog.

SALE ORDER & SUPPLEMENTAL INFORMATION

Sale order and a supplement sheet will be available sale day.

TERMS & CONDITIONS

Terms of the sale are cash unless satisfactory credit arrangements have been made prior to the sale. A representative will be on hand sale day if your wish to insure your purchases. Please note: All persons who attend the sale do so at their own risk. Neither the marketing team nor Pinegar Limousin assume liability, legal or otherwise, for any accidents which may occur.

EPDs are dated 4/2/2019

INSURANCE

Insurance on your purchase(s) can be provided by Mark Smith, Grassroots Genetics, 515.229.5227.

DIRECTIONS On the outside back cover.



ROAD to Springfield

ATTENTION NATIONAL JUNIOR FEMALE SHOW EXHIBITORS

A SPECIAL BONUS TO ALL JUNIOR PURCHASERS
OF PINEGAR GENETICS THROUGH THIS ROAD TO
SPRINGFIELD FEMALE CALF SALE ...

Pinegar Limousin will reimburse the entry fee and hotel stay for the week at the 2019 National Junior Limousin Show and Congress for each buyer who exhibits an AUTO heifer purchased through the Road to Springfield Sale. Now that's an opportunity too good to pass up.

2019 NATIONAL JUNIOR SHOW HOTEL

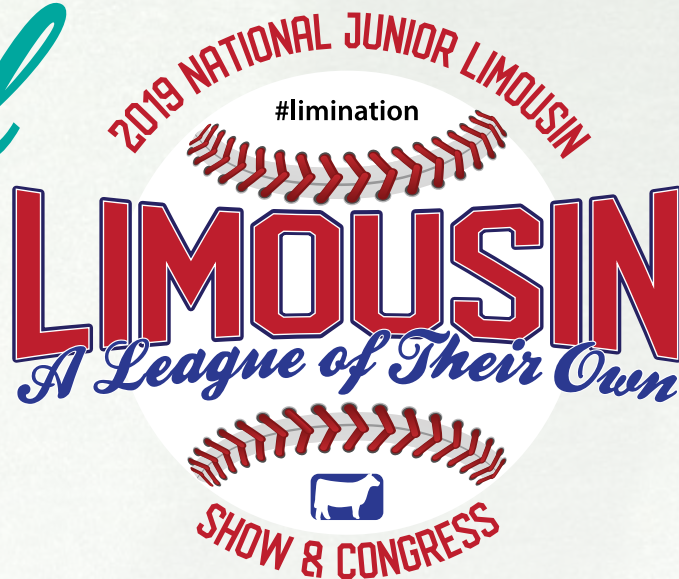
DOUBLETREE BY HILTON
2431 N Glenstone Ave.
Springfield, MO 65803
417.831.3131

FAIRFIELD INN & SUITES
2455 North Glenstone Ave.
Springfield MO 65803
417.833.9599



TOLL FREE: 1-877-PINEGAR

Ed and Carol Pinegar, owners - 417.833.6784
850 W. Farm Rd. 56 - Springfield, MO 65803
Ty & Susie Heavin, farm managers - 417.833.2688
Hannah McCall, show cattle



JUNE 29-JULY 5, 2019
SPRINGFIELD, MISSOURI

SHOW SCHEDULE

FRIDAY, JUNE 28

Cattle allowed in tie-outs (NO cattle or tack allowed in barns)

SATURDAY, JUNE 29

8:00 a.m. Move in/Set up

MONDAY, JULY 1

8:00 a.m. Sullivan Supply/Stock Show U Sponsored Showmanship

TUESDAY, JULY 2

8:00 a.m. Steers, Bred & Owned Purebred Females, Owned Lim-Flex Females; carcass contest following the show

WEDNESDAY, JULY 3

8:00 a.m. Limousin Cow-Calf Pairs, Lim-Flex Cow-Calf Pairs, Bred and Owned Lim-Flex Bulls, Bred and Owned Purebred Bulls, Bred and Owned Lim-Flex Females, Owned Limousin Females, Group Classes

THURSDAY, JULY 4

2:00 p.m. Sullivan Supply/Stock Show U Sponsored Team Fitting

FRIDAY, JULY 5

8:00 a.m. All-American Limousin Futurity

5:00 p.m. NALJA Awards Ceremony in show ring

ROAD TO SPRINGFIELD HEIFERS



Lot 1

What a neat heifer we have here to start out the Road To Springfield heifer calf sale. This daughter of the record-setting Angus sire HA Cowboy Up is out of a direct daughter of MAGS Manuela, giving her a pedigree that's something to write home about. From a visual perspective, this homozygous black, 50% Lim-Flex strikes an impressive profile while maintaining a square hip, level top and long neck. This late October heifer calf has the necessary parts and pieces to run with the best of them in the show ring, then go on to make a top-shelf donor female after her banner days are behind her.

1 | AUTO FELINA

10/25/2018 • AUTO 426F • LFF2159071
LIM-FLEX(50/44.9) COW • POLLED • HOMO BLACK (T)

HA OUTSIDE 3008
HA COYBOY UP 5405
HA BLACKCAP LADY 1602

DHVO DEUCE 132R
AUTO FOREVER 219X
MAGS MANUELA

KG SOLUTION 0018
HA EVER LADY 1575
HA PROGRAM 7328
HA BLCKCAP LADY 5515
GPFF BLAQUE RULON
AMY JO DHAN 20L
EXLR LIMITED EDITION 765J
AUTO CITY NIGHTS 214H

CD	BW	WW	YW	MK	CM	SC	DC	YG	CW	RE	MB	\$MI
10	1.6	80	129	20	5	1.0	11	-.24	53	.91	-.01	56
70	75	4	3	70	80	35	65	1	20	75	65	40

2 | AUTO FAYLEE

11/10/2018 • AUTO 421F • LFF2159070
LIM-FLEX(50/44.9) COW • POLLED • HET BLACK (T)

HA OUTSIDE 3008
HA COYBOY UP 5405
HA BLACKCAP LADY 1602

DHVO DEUCE 132R
AUTO FOREVER 219X
MAGS MANUELA

KG SOLUTION 0018
HA EVER LADY 1575
HA PROGRAM 7328
HA BLCKCAP LADY 5515
GPFF BLAQUE RULON
AMY JO DHAN 20L
EXLR LIMITED EDITION 765J
AUTO CITY NIGHTS 214H

CD	BW	WW	YW	MK	CM	SC	DC	YG	CW	RE	MB	\$MI
10	1.6	80	129	20	5	1.0	11	-.24	53	.91	-.01	56
70	75	4	3	70	80	35	65	1	20	75	65	40



Lot 2

This full sister to Lot 1 is an intriguing show-heifer prospect in her own right. Given the sweep to her ribcage, sound feet and legs, and cleanliness of lines, she has the tools to gain a judge's attention and hold it. What's more, these two unique females possess breed-leading genetics for both weaning weight and yearling weight, giving them a great deal of value from a genetic standpoint.



AUTO FOREVER 219X • Dam of Lots 1-4

ROAD TO SPRINGFIELD HEIFERS

The sire of Lots 3 and 4, Colburn Primo 5153, has sired as many show-ring champions as any bull in any breed as of late. After studying AUTO Frances and AUTO Fidela, it is easy to see why. Out of the same dam as Lots 1 and 2, we really appreciate the predictability of the pedigree and how it ties in seamlessly with the many pleasing visual attributes of this major league show-heifer prospect. If you are looking for a big-time fall show-heifer prospect, spend some extra time studying this one.



3

AUTO FRANCES

9/21/2018 • AUTO 298F • LFF2159067
LIM-FLEX(50/44.9) COW • POLLED • HET BLACK (T)

COLBURN PRIMO 5153
DAMERON FIRST CLASS
SILVEIRAS SARAS DREAM 1339

AUTO FOREVER 219X
DHVO DEUCE 132R
MAGS MANUELA

EXG RS FIRST RATE S903 R3
DAMERON NORTHERN MISS 311
SILVEIRAS STYLE 9303
EXG SARAS DREAM S609 R3
GPFF BLAQUE RULON
AMY JO DHAN 20L
EXLR LIMITED EDITION 765J
AUTO CITY NIGHTS 214H

CD	BW	WW	YW	MK	CM	SC	DC	YG	CW	RE	MB	\$MI
10	2.2	68	105	20	8	0.8	11	-.26	22	.67	.04	54
70	90	35	40	70	20	55	65	50	65	70	50	50

4

AUTO FIDELA

9/19/2018 • AUTO 295F • LFF2159065
LIM-FLEX(50/44.9) COW • POLLED • HET BLACK (T)

COLBURN PRIMO 5153
DAMERON FIRST CLASS
SILVEIRAS SARAS DREAM 1339

AUTO FOREVER 219X
DHVO DEUCE 132R
MAGS MANUELA

EXG RS FIRST RATE S903 R3
DAMERON NORTHERN MISS 311
SILVEIRAS STYLE 9303
EXG SARAS DREAM S609 R3
GPFF BLAQUE RULON
AMY JO DHAN 20L
EXLR LIMITED EDITION 765J
AUTO CITY NIGHTS 214H

CD	BW	WW	YW	MK	CM	SC	DC	YG	CW	RE	MB	\$MI
10	2.2	68	105	20	8	0.8	11	-.26	22	.67	.04	54
70	90	35	40	70	20	55	65	50	65	70	50	50

Wow! Simply put, AUTO Fidela has style to burn. It is hard to conjure up a pedigree with more show-ring potential than the sires and dams lining this one's pedigree. From the Angus greats on the top side, to the Limousin royalty on the bottom, it comes as no surprise this 50% Lim-Flex is among the breed's elite in terms of show-ring potential. As they saying goes, I would rather own her than try to beat her.



Lot 4

ROAD TO SPRINGFIELD HEIFERS



Lot 5

5

AUTO FLORIDA

9/4/2018 • AUTO 265F • LFF2159078
LIM-FLEX(50/45.1) COW • HET POLLED (T) • HET BLACK (T)

EXAR DENVER 2002B
EXAR POWERSOURCE 4723B
EXAR LUCY 2944

EXLR LIMITED EDITION 765J
MAGS MANUELA
AUTO CITY NIGHTS 214H

EXAR UPSHOT 0562B
EXAR ROYAL LASS 1067
CONNEALY CONSENSUS 7229
EXAR LUCY 9703
EXLR POLLED BENCHMARK709G
WULFS GLENDA 7021G
COLE FIRST DOWN 46D
MISS WOLFETTE 9049X

	CD	BW	WW	YW	MK	CM	SC	DC	YG	CW	RE	MB	\$MI
MARK EBS	10	2.4	68	111	24	7	0.8	10	-.19	38	.64	.43	68
	70	90	35	25	30	40	55	80	10	70	90	4	4

Take a look at the big middle and square hip on this direct daughter of the venerable MAGS Manuela. She should be easy to feed and manage and plenty of fun to drag up and down the road.

6

AUTO FARRAH

9/9/2018 • AUTO 275F • LFF2159073
LIM-FLEX(50/45.1) COW • POLLED • HET BLACK (T)

EXAR DENVER 2002B
EXAR POWERSOURCE 4723B
EXAR LUCY 2944

EXLR LIMITED EDITION 765J
MAGS MANUELA
AUTO CITY NIGHTS 214H

EXAR UPSHOT 0562B
EXAR ROYAL LASS 1067
CONNEALY CONSENSUS 7229
EXAR LUCY 9703
EXLR POLLED BENCHMARK709G
WULFS GLENDA 7021G
COLE FIRST DOWN 46D
MISS WOLFETTE 9049X

	CD	BW	WW	YW	MK	CM	SC	DC	YG	CW	RE	MB	\$MI
MARK EBS	10	2.4	68	111	24	7	0.8	10	-.19	38	.64	.43	68
	70	90	35	25	30	40	55	80	10	70	90	4	4

A full sib to Lot 5, examine her length of spine, sound structure and level top. And from a breeding value standpoint, she ranks highly for WW, YW, MK, MB and \$MI, just to name a few.



Lot 6

7

AUTO FALA

9/9/2018 • AUTO 274F • LFF2159072
LIM-FLEX(50/45.1) COW • POLLED • HET BLACK (T)

BSAR OPPORTUNITY 9114
BSF OPPORTUNIST ZS
BSF PRINCESS EL CAP W2

EXLR LIMITED EDITION 765J
MAGS MANUELA
AUTO CITY NIGHTS 214H

BSAR DESIGN DOCTOR 0910
BISHOPS LASSIE 746
SILVEIRAS EL CAPITAN 6510
B S F PRINCESS TCF N2
EXLR POLLED BENCHMARK709G
WULFS GLENDA 7021G
COLE FIRST DOWN 46D
MISS WOLFETTE 9049X

	CD	BW	WW	YW	MK	CM	SC	DC	YG	CW	RE	MB	\$MI
MARK EBS	3	4.1	72	108	23	4	0.7	11	-.32	40	.72	.25	64
	>95	>95	20	30	40	90	70	65	10	55	55	15	10

Heifers like Lot 7 are the reason MAGS Manuela will go down in history as one of the greatest ever. The opportunity to purchase direct daughters dwindles with each passing day, so take advantage here.



Lot 7



MAGS MANUELA • Dam of Lots 5-7

ROAD TO SPRINGFIELD HEIFERS

They can't all be Lot 1, but there was serious talk about starting the sale right here. If you like long, skinny necks that tie into flat shoulders, then this Primo daughter out of the celebrated past show female, AUTO Luckie Too 423Y should suit you right down to the ground. We could write more, but why? She will have a line of people analyzing her April 27.



8

AUTO FUAN

12/12/2018 • AUTO 404F • LFF2159069
LIM-FLEX(50/43) COW • HET POLLED (T) • HOMO BLACK (T)

DAMERON FIRST CLASS
COLBURN PRIMO 5153
SILVEIRAS SARAS DREAM 1339

EXG RS FIRST RATE S903 R3
DAMERON NORTHERN MISS 311
SILVEIRAS STYLE 9303
EXG SARAS DREAM S609 R3
KRVN NASKAR 013N
MAGS NIGHT AMBUSH
LESF ASPHALT 9N
TYEJ DB SIZZLE

WLR DIRECT HIT
AUTO LUCKIE TOO 423Y
TYEJ DB SERENITY

	CD	BW	WW	YW	MK	CM	SC	DC	YG	CW	RE	MB	\$MI
9	2.7	62	92	16	7	0.8	8	-.24	10	.48	.00	51	
85	95	65	75	95	40	55	95	90	95	75	60	70	

9

AUTO FRANCE

LIM-FLEX(50/43) COW • HOMO POLLED (T) • HOMO BLACK (T)
10/17/2018 • AUTO 402F • LFF2159068

DAMERON FIRST CLASS
COLBURN PRIMO 5153
SILVEIRAS SARAS DREAM 1339

EXG RS FIRST RATE S903 R3
DAMERON NORTHERN MISS 311
SILVEIRAS STYLE 9303
EXG SARAS DREAM S609 R3
KRVN NASKAR 013N
MAGS NIGHT AMBUSH
LESF ASPHALT 9N
TYEJ DB SIZZLE

WLR DIRECT HIT
AUTO LUCKIE TOO 423Y
TYEJ DB SERENITY

	CD	BW	WW	YW	MK	CM	SC	DC	YG	CW	RE	MB	\$MI
9	2.7	62	92	16	7	0.8	8	-.24	10	.48	.00	51	
85	95	65	75	95	40	55	95	90	95	75	60	70	

A full sib to Lot 8, and an incredible show-heifer prospect in her own right. She has style, substance, a royal pedigree and all the intangibles. The Luckie Too donor simply doesn't miss, and these two full sisters on this page are proof.



AUTO LUCKIE TOO 423Y • Dam of Lots 8-10



Lot **9**

ROAD TO SPRINGFIELD HEIFERS



Lot 10

Remember what we said a page earlier about Luckie Too never missing? Here is more proof. This daughter of the big numbered HBRL Deluxe Package 6114D will show with the purebreds at Junior Nationals, but she can compete anywhere you take her.

10

AUTO FENNA

10/9/2018 • AUTO 283F • NXF2159064
PERCENTAGE(78/68) COW • HET POLLED (T) • HOMO BLACK (T)

MAGS ZODIAC
HBRL DELUXE PACKAGE 6114D
HBRL BAMBI 489B

WLR DIRECT HIT
AUTO LUCKIE TOO 423Y
TYEJ DB SERENITY

MAGS WINSTON
MAGS XANTHOUS
EXAR DENVER 2002B
AUTO EXCEPTIONAL 282S
KRVN NASKAR 013N
MAGS NIGHT AMBUSH
LESF ASPHALT 9N
TYEJ DB SIZZLE

CD	BW	WW	YW	MK	CM	SC	DC	YG	CW	RE	MB	\$MI
10	2.2	65	102	21	5	-0.9	12	-.39	21	.69	-.15	47
65	85	40	35	55	75	25	55	30	85	75	45	50

11

AUTO FELIPA

10/13/2018 • AUTO 864F • NXF2159062
PERCENTAGE(79/70) COW • HOMO POLLED (T) • HOMO BLACK (T)

MAGS THE GENERAL
AUTO CRUZE 132X
AUTO REBECA 292S

LH U HAUL 135U
AUTO BENTLY 223B
AUTO LUCKIE 246W

AUTO DOLLAR GENERAL 122R
EXLR LUVLY 821M
LESF ASPHALT 9N
EXLR REBECA 1019P
BASIN FRANCHISE P142
EXLR DUCHESS 7129R
WLR DIRECT HIT
TYEJ DB SERENITY

CD	BW	WW	YW	MK	CM	SC	DC	YG	CW	RE	MB	\$MI
13	0.9	70	106	23	7	0.5	11	-.45	21	.75	-.14	50
25	50	20	25	30	35	60	65	30	75	65	40	40



Lot 11

The sire of AUTO Felipa, AUTO Cruze 132X, stamps them like few bulls in breed history. With some of the same maternal lineage as Lot 10, the predictability required to succeed in both the show ring and donor pen can be found in this double homozygous, high percentage female.

ROAD TO SPRINGFIELD HEIFERS

12

AUTO FIFI

11/19/2018 • AUTO 429F • LFF2159081
LIM-FLEX(64/56.2) COW • HOMO POLLED (T) • HOMO BLACK (T)

MAGS AVIATOR
CJSL CREED 5042C
CJSL 2090Z

LESF ASPHALT 9N
AUTO REBECA 292S
EXLR REBECA 1019P

MAGS WINSTON
MAGS XTRA REST
MAGS XUKALANI
MAGS XULEMA
GPFF BLAQUE RULON
GPFF EXTRA SWEET ELITE
BR MIDLAND
EXLR REBECA 614H

	CD	BW	WW	YW	MK	CM	SC	DC	YG	CW	RE	MB	\$MI
15	0.2	68	108	22	8	-0.6	11	-32	16	.74	.14	59	
10	35	35	30	50	20	80	65	75	50	55	35	30	

When you get a chance to purchase a direct daughter of Rebeca 292S it's best not to second guess yourself. When that heifer is sired by a bull as popular as CJSL Creed 5042C, the decision becomes an easy one.



Lot 12

AUTO REBECA 292S • Dam of Lots 12-13

13

AUTO FREEMA

9/8/2018 • AUTO 271F • LFF2159063
LIM-FLEX(62/55) COW • HOMO POLLED (T) • HOMO BLACK (T)

DAMERON FIRST CLASS
SBLX FIRST CLASS
MAGS MANUELA

LESF ASPHALT 9N
AUTO REBECA 292S
EXLR REBECA 1019P

EXG RS FIRST RATE S903 R3
DAMERON NORTHERN MISS 311
EXLR LIMITED EDITION 765J
AUTO CITY NIGHTS 214H
GPFF BLAQUE RULON
GPFF EXTRA SWEET ELITE
BR MIDLAND
EXLR REBECA 614H

	CD	BW	WW	YW	MK	CM	SC	DC	YG	CW	RE	MB	\$MI
9	1.0	63	97	25	5	-0.6	9	-32	24	.62	-.04	50	
85	60	60	60	20	80	80	85	45	75	55	70	75	

Another Rebeca 292S daughter, this time out of a son of the Angus great, Dameron First Class. The blood coursing through the veins of AUTO Freema puts her in an elite category that is seldom seen.



Lot 13

14

AUTO FLICKA

11/21/2018 • AUTO 433F • LFF2159113
LIM-FLEX(57/51.2) COW • HOMO POLLED (T) • DBL BLACK

MAGS AVIATOR
CJSL CREED 5042C
CJSL 2090Z

AUTO POWER PLUS 133B ET
AUTO CALLIE 403D ET
AUTO REBECA 292S

MAGS WINSTON
MAGS XTRA REST
MAGS XUKALANI
MAGS XULEMA
EXAR DENVER 2002B
EF YADDA YADDA 809Y
LESF ASPHALT 9N
EXLR REBECA 1019P

	CD	BW	WW	YW	MK	CM	SC	DC	YG	CW	RE	MB	\$MI
15	0.5	69	109	22	9	0.9	12	-27	21	.77	.22	61	
10	40	30	30	50	10	45	55	55	45	70	20	20	

Bred similar to Lot 12, AUTO Flicka, though just a November, is shaping up to be an elite fall show heifer prospect. She travels with style and grace, yet has the extension and power to put her in a class that far exceeds her contemporaries. Her dam, AUTO Callie, won the 2018 All-American Futurity for Ellie Dill.



Lot 14

AUTO CALLIE 403D • Dam of Lot 14

ROAD TO SPRINGFIELD HEIFERS



Lot 15

This homozygous black, homozygous polled, Purebred has the good fortune of being out of the elite donor, AUTO Pia 245X, one of the breed's most celebrated daughters of Rebeca 292S. When her successful show career is over, her breed-leading EPDs for traits like WW, YW, MK, SC, MB and \$MI will make her a genetic asset.

15

AUTO FLYNN

10/14/2018 • AUTO 297F • NPF2159135
PUREBRED(93/83.5) COW • HOMO POLLED (T) • HOMO BLACK (T)

WULFS YANKEE K689Y
WULFS COMMAND K136C ET
WULFS SHOOTING STAR 6134S

HUNT MR JOCK 44J
WULFS SOLOIST 6284S
CARROUSELS PURE POWER
WULFS HAPPINESS 8510H
AUTO DOLLAR GENERAL 122R
EXLR LUVLY 821M
LESF ASPHALT 9N
EXLR REBECA 1019P

MAGS THE GENERAL
AUTO PIA 245X
AUTO REBECA 292S

	CD	BW	WW	YW	MK	CM	SC	DC	YG	CW	RE	MB	\$MI
10	2.6	72	107	22	5	-0.6	13	-.67	14	1.17	-.14	52	
60	85	10	15	35	70	30	50	30	30	65	5	3	

16

AUTO FLEUR

11/20/2018 • AUTO 432F • NPF2159136
PUREBRED(93/83.8) COW • HOMO POLLED (T) • HOMO BLACK (T)

DHVO DEUCE 132R
TMCK DURHAM WHEAT 6030X
MAGS STRAWBERRY PIE

GPFF BLAQUE RULON
AMY JO DHAN 20L
TNUH BLUE PRINT 245H
MAGS PIE IN THE SKY
AUTO DOLLAR GENERAL 122R
EXLR LUVLY 821M
LESF ASPHALT 9N
EXLR REBECA 1019P

MAGS THE GENERAL
AUTO PIA 245X
AUTO REBECA 292S

	CD	BW	WW	YW	MK	CM	SC	DC	YG	CW	RE	MB	\$MI
13	1.3	70	104	20	7	0.8	14	-.59	17	1.02	-.40	41	
30	55	15	20	65	35	15	45	20	60	90	55	50	



Lot 16

Another daughter of Pia, this time, out of the proven, purebred sire of some of the most dominant show cattle in recent years, TMCK Durham Wheat 6030X. Her value as a future breeding piece is as promising as anything in the sale.



AUTO PIA 245X • Dam of Lots 15 & 16

ROAD TO SPRINGFIELD HEIFERS



AUTO LUCKY GUY 140D • Sire of Lot 17

AUTO Frankie is bred to be something special. Look deep into the top side of her pedigree and realize she has both Luckie 246W and Rebeca 292S lurking in her impressive genetic heritage. Her nicely balance EPD profile and unique pedigree on the bottom side, give her plenty of potential in the breeding pasture.



Lot **17**

17 | AUTO FRANKIE

9/12/2018 • AUTO 849F • LFF2159058
LIM-FLEX(71/62) COW • HET POLLED (T) • HOMO BLACK (T)

AUTO LUCKY STRIKE 118B
AUTO LUCKY GUY 140D ET
AUTO REBECA 479A

MAGS ROBIN HOOD 276Y
AUTO PERFECT 603C
MISS PERFECTION 547Y

LH U HAUL 135U
AUTO LUCKIE 246W
MAGS XYLOPOLIST
AUTO REBECA 292S
MAGS UR A ROBIN
MAGS UNDERFOOT
S A V NET WORTH 4200
JEPS PERFECTION 237 W

CD	BW	WW	YW	MK	CM	SC	DC	YG	CW	RE	MB	\$MI
12	1.5	68	107	25	7	-0.7	11	-.44	23	.84	-.06	52
40	75	35	35	20	40	80	65	50	30	25	70	65

18 | AUTO FRONIE

9/18/2018 • AUTO 858F • NXF2159059
PERCENTAGE(78/71.4) COW • HOMO POLLED (T) • HOMO BLACK (T)

MAGS ZODIAC
HBRL DELUXE PACKAGE 6114D
HBRL BAMBI 489B

AUTO DOLLAR GENERAL 122R
AUTO CRYSTAL 692T
AUTO DELIGHT 833R

MAGS WINSTON
MAGS XANTHOUS
EXAR DENVER 2002B
AUTO EXCEPTIONAL 282S
LVLS SECRET WEAPON 4408K
AUTO KYRIA 232K
AUTO OVER INVOICE 120K
WULFS DELIGHT 4114D

CD	BW	WW	YW	MK	CM	SC	DC	YG	CW	RE	MB	\$MI
13	0.5	65	106	31	8	0.7	14	-.37	28	.72	-.03	52
25	40	40	25	1	20	50	35	15	80	75	30	30

This homozygous black, homozygous polled, high percentage female is one to take notice of. She is deep, stout and sound and projects to have a promising future in the bright lights of the show ring. Plus, she is a breed leader for growth, milk and marbling. What more could you ask for?



Lot **18**

ROAD TO SPRINGFIELD HEIFERS



Lot 19

Study this one for what she is. A really fancy, late December, major league prospect. This Creed daughter is out of a top-notch Diamond Hill cow, giving us the confidence that with days on feed, she will reach the finish line.

19 | AUTO FLORRIE

12/20/2018 • AUTO 441F • LFF2159082
LIM-FLEX(57/51.8) COW • HOMO POLLED (T) • DBL BLACK

CJSL CREED 5042C
MAGS AVIATOR
CJSL 2090Z

DHIL LUVLY 5023C
LH XPRESS FREIGHT 136X
EXLR LUVLY 024X

MAGS WINSTON
MAGS XTRA REST
MAGS XUKALANI
MAGS XULEMA

LH RODEMASTER 338R
KRVN NACHES 151N
EXAR TITLELIST T011
EXLR LUVLY 7127N

CD	BW	WW	YW	MK	CM	SC	DC	YG	CW	RE	MB	\$MI
12	1.7	69	108	20	7	0.6	14	-.32	24	.82	.28	64
40	80	30	30	70	40	90	30	45	35	55	15	10

20 | AUTO FRANNY

11/3/2018 • AUTO 269F • LFF2159134
LIM-FLEX(75/66) COW • HOMO POLLED (T) • HOMO BLACK (T)

MAGS CABLE
MAGS APPLESEED
MAGS ZEQUIN

PBRS TOUCH ME GENTLY 798T
DHVO DEUCE 132R
CARROUSELS PINA COLADA

RITO 6EM3 OF 4L1 EMBLAZON
MAGS WAY TO SHINE
BOHI TOP DOLLAR 7144T
WERNER RITA 118
GPFF BLAQUE RULON
AMY JO DHAN 20L
AUTO BLACK DAKOTA 129J
ELMW GINNIE P58G

CD	BW	WW	YW	MK	CM	SC	DC	YG	CW	RE	MB	\$MI
13	1.5	70	107	19	8	1.2	14	-.40	34	.93	-.10	51
25	75	25	35	80	20	25	30	15	15	35	80	70



Lot 20

AUTO Franny is a maternal sister to one of the most celebrated show females in recent memory. Her dam, PBRS Touch Me Gently 798T is the prototype female for producing daughters that can compete at the highest level.



LH BELLE 015B • Maternal sister to Lot 20

ROAD TO SPRINGFIELD HEIFERS

Always one of the most exciting and intriguing lots in our "Road" sales, the pick of January babies is again this year, one that deserves considerable evaluation and consideration. Within this lot are many of our tried-and-true sires and dams who, over the years, have produced some of our most successful show cattle, both for ourselves and our valued customers. There's been much discussion on which one is the best between Ty and Hannah, and then Cody threw in his two cents when back from college. We think you'll really like these girls and have fun studying them April 27!



AUTO POWER LINE 135B • Sire of Lot 21G



AUTO COPY CAT 403C • Dam of Lot 21A



CARROUSELS PEACHES • Dam of Lot 21C



HBRL DELUXE PACKAGE • Sire of Lot 21B



AUTO POWER PLUS 133B • Sire of Lots 21A & 21E



AUTO CASPER C • Dam of Lots 21D & 21H

Selling Choice #1!

21A | AUTO GRADE UP

1/10/2019 • LF(63) COW • HP/DB
AUTO POWER PLUS 133B ET x AUTO COPY CAT 403C ET

21B | AUTO MAKE HER COUNT

1/8/2019 • LF(71) • HP/HB
HBRL DELUXE PACKAGE 6114D x AUTO CLEO 278C ET

21c | AUTO GRAND RUBY

1/3/2019 • PB • DP/R
HUNT CREDENTIALS 37C x CARROUSELS PEACHES 4330P

21d | AUTO ROYAL GLOW

1/7/2019 • LF (66) • DP/HB
RIVERSTONE CROWN ROYAL x AUTO CASPER C ET

Selling Choice #2!

21E | AUTO GIFT

1/3/2019 • LF(62) • HP/HB
AUTO POWER PLUS 133B ET x AUTO CYBER 662C

21F | AUTO POWER GIRL

1/7/2019 • LF(64) • DP/HB
AUTO REAL STRIKE 141D ET x AUTO AVON 4439A

21g | AUTO DAY DREAMER

1/5/2019 • LF(59) • HP/HB
AUTO POWER LINE 135B ET x AUTO CLEM 675C

21h | AUTO CROWNING DAY

1/5/2019 • LF(66) • DP/HB
RIVERSTONE CROWN ROYAL x AUTO CASPER C ET

Select Breeders LIMOUSIN SALE

OFFERING 72 LOTS

Lots 30-101 | Pages 13-40

OFFERING 11 OPEN HEIFERS • 16 SPRING PAIRS • 3 FALL PAIRS • 21 FALL BREDS
EMBRYOS • FLUSHES • SEMEN PACKAGES

SELLING LOTS 30-101 IN CATALOG ORDER.

Sale Contributors...

BLAKE CATTLE

Mark Blake
Gibbon, NE
712.269.1361

BOYCE-DILL FARMS

Brent Boyce
Jake, Lisa, Jackson & Ellie Dill
Marshfield, MO
417.830.294 - Brent

CHISHOLM TRAIL FARMS

Ken Glazier
Kingfisher, OK
405.368.5556

CIRCLE R RANCH

Steve Revell
St. Johns, FL
904.482.7197

DIAMOND HILL CATTLE CO.

Mark Barker
Nichols Hills, OK
405.520.5846

EDWARDS LIMOUSIN

Emmett Edwards & Scott Edwards
Higginsville, MO
816.726.1919 Emmett
660.232.1793 Scott

B.F. EVANS CATTLE CO.

Byron Evans
Lexington, KY
859.509.8046

J6 FARMS

David Spencer
Gibbon, NE
308.627.6259

JONES BROTHERS

Grant Jones & Tye Jones
Knob Noster, MO 65336
660.553.8114 Grant
660.460.5517 Tye

KAUTSCH LIMOUSIN

Andrew & Sara Kautsch
Russellville, MO
573.301.3552

KLS FARMS

Kevin Smith
Chatham, LA
318.245.4607

LOGAN HILLS CATTLE CO.

Larry Smith
West Harrison, IN
513.218.2408 - Larry
513.616.8499 - Scott Minges

M&R LIMOUSIN

Mark & Robin Middleton
Bourbon, MO
314.956.9878

PINEGAR LIMOUSIN

Ed Pinegar
Springfield, MO
1.877.PINEGAR

RIVERSIDE VALLEY FARM

Colby Hamm
Hohenwald, TN
931.628-3212

ROCKIN'R RANCH

Ken & Jan Ragsdell
Rolla, MO
573.341.9070

STOWERS LIMOUSIN

Scott, Donna & Lauren Stowers
Bridgeport, TX
940.577.1300 - Scott
817.247.8011 - Jason Gaston

SELECT BREEDERS OPEN HEIFERS

This daughter of the proven and popular MAGS Y So Tangled, is a total outcross on the bottom side, being out the storied Canadian Limousin program, Highland Stock Farms. SKLS 545F combines her unique genetic heritage with a pleasing phenotype and balanced EPDs across the page.



30

SKLS 545F

5/2/2018 • SKLS 545F • LFF2159127

LIM-FLEX(73/67.7) COW • DBL POLLED • DBL BLACK

MAGS Y SO TANGLED
MAGS WINSTON
MAGS UNTANGLE

SKLS 301A
HSF YELLOWKNIFE
HSF YESTERDAYS GONE

BT CROSSOVER 758N
MAGS STRAWBERRY
MAGS SASQUATCH
AUTO COOKIE CUTTER 295R
WULFS TAILOR MADE 2107T
TMF MISS 614W
RPY PAYNES TRILOGY 26T
HSF RACHEL

ACT BW • 84

CD	BW	WW	YW	MK	CM	SC	DC	YG	CW	RE	MB	\$MI
8	1.7	57	93	23	3		12	-.46	21	.79	-.09	48
95	80	85	75	40	95		55	55	40	20	80	85

OFFERED BY: LOGAN HILLS CATTLE CO.

31

SKLS449F

4/8/2018 • SKLS 449F • LFF2159128

LIM-FLEX(75/63.5) COW • HOMO POLLED (P2) • DBL BLACK

ACHH POLLED CRUZEWONDER 163B ET
AUTO CRUZE 132X
ENGD WONDERLUST 930W

PBRS BREAK AWAY 422B
EF ZEN 344Z
J BAR 7 BARBARA NELL 6416

MAGS THE GENERAL
AUTO REBECA 292S
WULFS SIRLOIN 3172S
J BAR J TAKE ME HOME 706T
CJSL WINDFALL 9072W
EF TREND SETTER 206T
BLUEGRASS NEW DESIGN 205
SITZ BARBARAMERE NELL 159

ACT BW • 82

CD	BW	WW	YW	MK	CM	SC	DC	YG	CW	RE	MB	\$MI
11	0.3	66	97	23	6		12	-.44	13	.74	-.09	50
55	35	45	60	40	60		55	85	50	25	80	75

OFFERED BY: LOGAN HILLS CATTLE CO.

Deep bodied, level topped and sound from the ground up best describe SKLS 449F. A direct daughter of the once top-selling Cruzewonder, she is out of a top-producing cow from the P Bar S program in Oklahoma. This one has worlds of potential on many fronts.



Lot 31

SELECT BREEDERS OPEN HEIFERS



Take a look at this ultra-fancy daughter of one of the hottest bulls in the business right now, MAGS Aviator. Back to Anchor and the great Carminda on the bottom side, Fiona is steeped in tradition and has the intangibles necessary to succeed in today's seedstock business.

Lot 32

32

WVR FIONA

2/20/2018 • WVRL 300F • LFF2142818

LIM-FLEX(70/63.1) COW • HOMO POLLED (P2) • HOMO BLACK (P2)

MAGS WINSTON
MAGS AVIATOR
MAGS XTRA REST

MAGS ANCHOR
CJSL 6097D ET
AUTO CARMINDA 656S

BT CROSSOVER 758N
MAGS STRAWBERRY
DHVO DEUCE 132R
MAGS UNREST
LH WAR HERO 195W
MGS XIPHOPAGOUS
JCL LODESTAR 27L
AUTO CARMINDA 872P

ACT BW • 78

ADJ WW • 662

ADJ YW • 907

ADJ REA • 12.78

ADJ IMF • 4.90

	CD	BW	WW	YW	MK	CM	SC	DC	YG	CW	RE	MB	\$MI
14	0.5	64	100	18	7	0.4	14	-30	25	.7	.06	54	
15	40	55	55	85	40	95	30	40	60	60	50	50	

OFFERED BY: PINEGAR LIMOUSIN

33

M&R FIONA 98F

4/16/2018 • MIDL 98F • LFF2141069

LIM-FLEX(60/54.3) COW • DBL POLLED • HOMO BLACK (P3)

RLBH AIR FORCE ONE
M&R DOWNLOAD 65D ET
MAGS XOSA

TMCK ARCHITECT 031A
TMCK DAPHNE 386D
MAGS ADELLE

EF XCESSIVE FORCE
EF YAFFA 821Y
DHVO DEUCE 132R
BOHI RHONDA 314R

TMCK HYDRAULIC 17Y
TMCK LA VEDA 909Y
MAGS Y-AXIS
MAGS THEATRICAL

ACT BW • 60

ADJ WW • 610

ADJ YW • 902

	CD	BW	WW	YW	MK	CM	SC	DC	YG	CW	RE	MB	\$MI
11	0.8	72	112	20	7	0.8	16	-31	21	.79	.05	56	
55	50	20	20	70	40	55	15	55	40	60	50	40	

OFFERED BY: M&R LIMOUSIN



This attractive homo black heifer is out of an Air Force One x MAGS Xosa son that sires cattle with a lot of volume and bone. M&R Fiona 98F is out of a TMCK Architect daughter that goes back to a MAGS Y-Axis female. Study her profile, and you will agree, she will make a nice show heifer. She is halter broke and loves attention. Bid with confidence on this 60% Lim-Flex yearling heifer.

Lot 33

SELECT BREEDERS OPEN HEIFERS

If you are looking for a combination heifer that will both compete and be an outstanding producer down the road, DEEE Faith deserves a lengthy look. By the proven, big numbered, AI sire, MAGS Eagle, this homozygous black, 59% Lim-Flex heifer is out of the proven donor MAGS Zestfully Sensual. Bid with confidence, as this female has all the bases covered.



34

DEEE FAITH ET

2/10/2018 • DEEE 901F • LFF2152225
LIM-FLEX(59/53.5) COW • DBL POLLED • HOMO BLACK (T)

MAGS WINSTON
MAGS EAGLE
MAGS WEB OF DECEIT

MAGS WHITCOMB
MAGS ZESTFULLY SENSUAL
MAGS XTRA SENSUAL

BT CROSSOVER 758N
MAGS STRAWBERRY
AUTO DOLLAR GENERAL 122R
CABIN CREEK BEHAVE 6040

BT CROSSOVER 758N
EXLR 199H
DHVO DEUCE 132R
MAGS STRAWBERRY

ACT BW • 82

CD	BW	WW	YW	MK	CM	SC	DC	YG	CW	RE	MB	\$MI
12	0.5	72	114	23	6	0.9	14	-.22	39	.66	.08	57
40	40	20	20	40	60	55	30	80	10	65	45	35

OFFERED BY: EDWARDS LIMOUSIN

35

SEEE 914F

7/25/2018 • SEEE 914F • NXF2157940
PERCENTAGE(84/74.8) COW • HOMO POLLED (P3) • DBL BLACK

MAGS YIP
SEEE ABOUT TIME
AUTO REBECA 292S

MAGS Y SO TANGLED
SEEE BEV
PBRN WARN RADAR 998W

MAGS THE GENERAL
AUTO CARMINDA 656S
LESF ASPHALT 9N
EXLR REBECA 1019P

MAGS WINSTON
MAGS UNTANGLE
KRVN NASKAR 013N
MAGS NEXT DAY

ACT BW • 73
ADJ WW • 689

CD	BW	WW	YW	MK	CM	SC	DC	YG	CW	RE	MB	\$MI
11	0.8	59	91	21	6	0.4	11	-.47	16	.64	-.19	45
50	50	70	65	55	55	75	65	45	90	65	50	60

OFFERED BY: EDWARDS LIMOUSIN

SEEE 914F is a high percentage, homozygous polled, daughter of the impressive Yip son, SEEE About Time. On the bottom side, she features some of the breed's most elite genetics, giving her plenty of pedigree predictability. Numerically, she is balanced across the page, giving her new owners many options as to the direction to take their breeding program.



DEEE FIREFLY 902F • Paternal sister to Lot 35

SELECT BREEDERS OPEN HEIFERS



Lot 36

A big-time fall show-heifer prospect is this direct daughter of the great AI sire, MAGS Aviator. This 48% Lim-Flex female goes back to the Angus great Brilliance on the bottom side and features an extremely balanced set of EPDs across the page. This won't be the last you see of this exciting prospect.

36 | JDIL JAYMIN 474F

9/5/2018 • JDIL 474F • LFF2159003
LIM-FLEX(48/43.8) COW • POLLED • BLACK

MAGS WINSTON
MAGS AVIATOR
MAGS XTRA REST

AUTO ARIAT 303A
JDIL JAYMIN 365D
JEPS JAYMIN 67A

BT CROSSOVER 758N
MAGS STRAWBERRY
DHVO DEUCE 132R
MAGS UNREST
S A V BRILLIANCE 8077
AUTO FOREVER 219X
BC BALANCE 720-9
BBPB JAYMIN 107Y

ACT BW • 61

	CD	BW	WW	YW	MK	CM	SC	DC	YG	CW	RE	MB	\$MI
14	0.1	64	100	21	8			14	-.17	24	.66	.18	57
15	30	55	55	60	20			30	45	65	90	25	35

OFFERED BY: BOYCE-DILL CATTLE

37 | BFEC FOXY LADY 1923F

3/28/2018 • BFEC 1923F • LFF2158920
LIM-FLEX(68/60.3) COW • HOMO POLLED (P2) • HOMO BLACK (P1)

WLR DIRECT HIT
AUTO DIRECT DEPOSIT 105D ET
AUTO REBECA 292S

LH RODEMASTER 338R
MAGS YOUNGER
EXLR LADY 5112N

KRVN NASKAR 013N
MAGS NIGHT AMBUSH
LESF ASPHALT 9N
EXLR REBECA 1019P
JCL LODESTAR 27L
VERMILION E BLACKBIRD9546
AUTO BLACK DAKOTA 129J
B & L SKYLINE LADY 5089

ACT BW • 68

ADJ WW • 689

	CD	BW	WW	YW	MK	CM	SC	DC	YG	CW	RE	MB	\$MI
10	2.0	66	103	27	6			0.8	9	-.54	18	.86	41
70	85	45	45	10	60			70	85	70	25	10	>95

OFFERED BY: B.F. EVANS CATTLE CO.



Maternal sib to Lot 37

This is a stout heifer who happens to be one of Deposit's oldest daughters. On the bottom side, her dam is a solid producing LH Rodemaster daughter, who has left behind many dominant Lim-Flex females. Take note of her breed-leading EPDs for milk and ribeye, a rare combination.

SELECT BREEDERS OPEN HEIFERS

38 | KEN'S COOKIE CUTTER 106F

6/1/2018 • CTFM 106F • NFF2144159
FULLBLOOD(100/100) COW • DBL POLLED • RED

1-WAY JUST GORGEOUS
SVL POLLED EXCELLANT 201B
SVL POLLED ELATION 039N

STZZ POLLED GUTHRIE 826H
SVL POLLED NINA 228R
SVL NICOLE 504H

1-WAY POLLED JUSTICE
CRESSMAN GORGEOUS
STZZ POLLED GUTHRIE 826H
SVL POLLED ELEGANCE 608J
STZZ POLLED YUKON 50E
THUNDERATION
GUNSMOKE
WC MISS NADINE 14D

ACT BW • 72

ADJ WW • 710

CD	BW	WW	YW	MK	CM	SC	DC	YG	CW	RE	MB	\$MI
10	1.9	57	81	20	7	0.1	8	-90	8	1.24	-.62	32
60	70	75	80	65	35	95	85	60	15	5		95

OFFERED BY: CHISHOLM TRAIL FARMS

The first of three daughters of SVL Excellant 201B, Cookie Cutter is long bodied, stout made and ready for a halter.



39 | KEN'S SASSY LADY 115F

3/20/2018 • CTFM 115F • NFF2141232
FULLBLOOD(100/100) COW • HET POLLED (T) • RED

1-WAY JUST GORGEOUS
SVL POLLED EXCELLANT 201B
SVL POLLED ELATION 039N

CFSV POLLED EXCEL 315S
CTFM MISS CLOEY 313X
CHBI CANDY 178H

1-WAY POLLED JUSTICE
CRESSMAN GORGEOUS
STZZ POLLED GUTHRIE 826H
SVL POLLED ELEGANCE 608J
LENAPE POLLED LIBERTY
SVL POLLED ELATION 039N
OAKM LORD 109E
DSLW SANDHILL SANDI

ACT BW • 69

ADJ WW • 694

ADJ YW • 1,023

CD	BW	WW	YW	MK	CM	SC	DC	YG	CW	RE	MB	\$MI
8	2.9	59	86	20	5	0.0	7	-.93	7	1.28	-.61	33
85	90	65	70	65	70	95	85	65	10	2	>95	95

OFFERED BY: CHISHOLM TRAIL FARMS

A polled fullblood daughter of Excellant who goes back to several fullblood icons on the bottom side. She too is stout, sound and ready for the ring.



40 | KEN'S YUKON GIRL 102F

3/15/2018 • CTFM 102F • NFF2141230
FULLBLOOD(100/100) COW • HET POLLED (T) • RED

1-WAY JUST GORGEOUS
SVL POLLED EXCELLANT 201B
SVL POLLED ELATION 039N

STZZ POLLED YUKON 50E
CF YUKON CHERI 151T
D'HANIS HIGH CHERI 741R

1-WAY POLLED JUSTICE
CRESSMAN GORGEOUS
STZZ POLLED GUTHRIE 826H
SVL POLLED ELEGANCE 608J
YKCC TOP LINE 180X
MASH WHISPER
COJR HIGH TIDE 236M
SSAM O-CHERI 608F

ACT BW • 71

ADJ WW • 735

ADJ YW • 1,086

CD	BW	WW	YW	MK	CM	SC	DC	YG	CW	RE	MB	\$MI
8	3.0	62	90	23	6	0.1	10	-.90	6	1.25	-.61	34
85	90	50	60	25	50	95	75	70	15	5	>95	90

OFFERED BY: CHISHOLM TRAIL FARMS

The third paternal sister on the page, Yukon Girl can hold her own with the best of them. Her breed-leading milk and ribeye EPDs will be assets down the road.



SELECT BREEDERS GENETICS



Lot 41

41 | AUTO ZOFIA 439Z

11/13/2012 • AUTO 439Z • NPF2021848
PUREBRED(87/78.6) COW • POLLED • HET BLACK (T)

DHVO DEUCE 132R	GPFF BLAQUE RULON	
MAGS XYLOID	AMY JO DHAN 20L	ACT BW • 68
BOHI RHONDA 314R	EXLR NEW GENERATION 071M	ADJ WW • 718
	DAVIS ROSETTA 9514	ADJ YW • 1,072
EXLR LIMITED EDITION 765J	EXLR POLLED BENCHMARK709G	ADJ REA • 14.14
MAGS MANUELA	WULFS GLENDA 7021G	ADJ IMF • 4.44
AUTO CITY NIGHTS 214H	COLE FIRST DOWN 46D	
	MISS WOLFETTE 9049X	

CD	BW	WW	YW	MK	CM	SC	DC	YG	CW	RE	MB	\$MI
6	3.7	58	92	25	5	0.7	14	-.45	20	.65	-.22	43
95	95	55	35	20	65	15	35	10	>95	>95	5	20

OFFERED BY: J6 FARMS

Selling 5 IVF Heifer Embryos to the bull of the buyer's choice. Seller pays flush cost; buyer supplies semen.

What an exciting genetic opportunity we have here. AUTO Zofia 439Z is the highly valued Xyloid daughter out of the breed legend, MAGS Manuela. Given her purebred status, the books are completely open as to which direction to take this mating.



Lot 42

42 | AUTO LUCKIE LADY 280C ET

6/6/2015 • AUTO 280C • LFF2086854
LIM-FLEX(50/43) COW • HOMO POLLED (T) • HOMO BLACK (T)

S A V BRILLIANCE 8077	S A V BISMARCK 5682	
PVF INSIGHT 0129	S A V BLACKCAP MAY 5270	ACT BW • 68
PVF MISSIE 790	P V F NEW HORIZON 001	ADJ WW • 556
	P V F MISS RAPTOR 024	ADJ YW • 827
WLR DIRECT HIT	KRVN NASKAR 013N	ADJ REA • 13.20
AUTO LUCKIE TOO 423Y	MAGS NIGHT AMBUSH	ADJ IMF • 3.56
TYEJ DB SERENITY	LESF ASPHALT 9N	
	TYEJ DB SIZZLE	

CD	BW	WW	YW	MK	CM	SC	DC	YG	CW	RE	MB	\$MI
13	1.5	60	92	21	6	1.1	7	-.34	26	1.06	-.06	49
20	70	55	60	65	60	25	90	25	3	50	70	70

OFFERED BY: J6 FARMS

Selling 5 IVF Heifer Embryos to the bull of the buyer's choice. Seller pays flush cost; buyer supplies semen.

Opportunities like these don't present themselves every day. Study the breeding up and down the pedigree of AUTO Luckie Lady 280C and realize she is bred to be something special and she is just that. The sky is literally this limit with this opportunity.



AUTO AJAY 206A • Dam of Lot 43 embryos

43 | THREE EMBRYOS

LIM-FLEX(25) • DBL POLLED • BLACK

RED TAYLOR'S COWBOY 43B	RED WILBAR COWBOY COUNTRY 90	
RED WILDMAN CIMARRON 605D	RED TAYLOR'S ROSALEE 3Y	
RED WILDMAN MISS STOCKY 420B	RED JENSEN SKY 611X	
	RED WILDMAN MISS STOCKY 731T	
S A V BRAVE 8320	S A V MANDAN 5664	
AUTO AJAY 206A	S A V MAY 2397	
MAGS MANUELA	EXLR LIMITED EDITION 765J	
	AUTO CITY NIGHTS 214H	

CD	BW	WW	YW	MK	CM	SC	DC	YG	CW	RE	MB	\$MI
8	2.3	64	101	15	5			0.4	10	-.07	.25	
6	2.7	60	95	26	4	1.2	9	-.28	22	.64	.13	55

OFFERED BY: BLAKE CATTLE

Here is a chance to obtain some rare Red Angus genetics combined with legendary Limousin heritage. This combination has world's of potential and we feel this mating could result in Lim-Flex genetics capable of setting a new course. Guarantee one pregnancy if implanted by a certified embryologist.

SELECT BREEDERS GENETICS

Selling Choice— Right To Flush

TERMS: An IVF flush conducted under the supervision of Pinegar Limousin. Guaranteeing a minimum of 5 embryos with a maximum of 10. Seller pays the flush cost; buyer provides semen.

A full sister to MAGS Aviator. This female has all the right tools to do tremendous things for a program looking to build on a proven pedigree. This is truly an opportunity that rarely presents itself, so bid with confidence and take advantage of this chance to build something special.



Lot **44A**

44A | CELL AMELIA EARHART 8212F ET

1/23/2018 • CELL 8212F • LFF2151951
LIM-FLEX(59/53.3) COW • HOMO POLLED (P1) • HOMO BLACK (T)

MAGS WINSTON
BT CROSSOVER 758N
MAGS STRAWBERRY

MAGS XTRA REST
DHVO DEUCE 132R
MAGS UNREST

C A FUTURE DIRECTION 5321
BT ROYAL PRIDE 237G
EXLR NEW GENERATION 071M
MAGS FRUITFUL 487M
GPFF BLAQUE RULON
AMY JO DHAN 20L
MAGS REMOTE
HA LADY 1091

ACT BW • 89

ADJ WW • 640

ADJ YW • 964

ADJ REA • 13.20

ADJ IMF • 4.31

CD	BW	WW	YW	MK	CM	SC	DC	YG	CW	RE	MB	\$MI
14	0.5	67	108	22	7	0.3	16	-28	39	.85	.12	57
15	40	40	30	50	40	>95	15	10	30	65	35	35

OFFERED BY: PINEGAR LIMOUSIN

44B | AUTO FEDORA ET

1/24/2018 • AUTO 222F • NPF2159115
PUREBRED(93/84.1) COW • HET POLLED (T) • HOMO BLACK (T)

TMCK DURHAM WHEAT 6030X
DHVO DEUCE 132R
MAGS STRAWBERRY PIE

WLR PRADA
MAGSWL USUAL SUSPECT 538U
AUTO REBECA 292S

GPFF BLAQUE RULON
AMY JO DHAN 20L
TNUH BLUE PRINT 245H
MAGS PIE IN THE SKY
MAGS SASQUATCH
MAGS PHANTOMS PRIZE
LESF ASPHALT 9N
EXLR REBECA 1019P

ACT BW • 68

ADJ WW • 634

ADJ YW • 937

ADJ REA • 12.66

ADJ IMF • 3.35

CD	BW	WW	YW	MK	CM	SC	DC	YG	CW	RE	MB	\$MI
12	1.8	66	97	19	7	0.8	12	-.61	14	1.01	-.46	38
35	70	30	40	75	35	15	60	30	60	85	75	70

OFFERED BY: PINEGAR LIMOUSIN

We realize this decision won't be an easy one. AUTO Fedora is a homozygous black, purebred by Durham Wheat and out of the many-time champion WLR Prada who Shelby Skinner made famous. Prada is a full sister to AUTO Usually Yours who Cody Heavin campaigned successfully. The good news is, either one you choose comes with built-in marketability and the potential to create truly special animals that check all of the boxes.



Lot **44B**

SELECT BREEDERS GENETICS



AUTO CALLIE 403D • Dam of Lot 45 embryos

45 | THREE HEIFER EMBRYOS

LIM-FLEX(57/51.2) • HOMO POLLED (T) • DBL BLACK

MAGS AVIATOR
CJSL CREED 5042C
CJSL 2090Z

AUTO POWER PLUS 133B ET
AUTO CALLIE 403D ET
AUTO REBECA 292S

MAGS WINSTON
MAGS XTRA REST
MAGS XUKALANI
MAGS XULEMA
EXAR DENVER 2002B
EF YADDA YADDA 809Y
LESF ASPHALT 9N
EXLR REBECA 1019P

	CD	BW	WW	YW	MK	CM	SC	DC	YG	CW	RE	MB	\$MI
15	0.5	69	109	22	9	0.9	12	-.27	21	.77	.22	61	
10	40	30	30	50	10	45	55	55	45	70	20	20	

OFFERED BY: BOYCE-DILL CATTLE

The dam of these embryos is a first rate donor by Power Plus out of the great Rebeca 292S. Callie was also the 2018 All-American Futurity Champion female for Ellie Dill. Stack that with the "in demand" genetics of CJSL Creed on the top side, and you have an opportunity to be control of Homozygous polled progeny capable of writing their own ticket.



AUTO SPRITZ 278Z • Dam of Lot 46 embryos

46 | FIVE HEIFER EMBRYOS

PERCENTAGE(85/73) COW • HOMO POLLED (T) • HET BLACK (T)

LH U HAUL 135U
AUTO LUCKY STRIKE 118B
AUTO LUCKIE 246W

AUTO CRUZE 132X
AUTO SPRITZ 278Z
KRVN SPRITZER 243S

BASIN FRANCHISE P142
EXLR DUCHESS 7129R
WLR DIRECT HIT
TYEJ DB SERENITY
MAGS THE GENERAL
AUTO REBECA 292S
GPFF BLAQUE RULON
WULFS LEMONADE 1182L

	CD	BW	WW	YW	MK	CM	SC	DC	YG	CW	RE	MB	\$MI
14	1.2	65	99	22	9	0.5	8	-.64	8	1.07	-.17	49	
20	60	40	40	45	10	75	90	75	25	40	45	40	

OFFERED BY: ANDREW KAUTSCH

The genetics wrapped together in this package are exciting to say the least. Lucky Strike on the top and the dominant past show female, AUTO Spritz 278Z on the bottom, gives us all the confidence needed to realize these high percentage progeny will turn heads.



Lot 47

47 | PBR5 DERBY WINNER 6306D ET

10/3/2016 • PBR5 6306D • LFF2122186

LIM-FLEX(73/66) COW • HOMO POLLED (T) • HET BLACK (T)

MAGS WINSTON
MAGS AVIATOR
MAGS XTRA REST

MAGS XYLOID
SBXL ZNOTE
MAGS MANUELA

BT CROSSOVER 758N
MAGS STRAWBERRY
DHVO DEUCE 132R
MAGS UNREST
DHVO DEUCE 132R
BOHI RHONDA 314R
EXLR LIMITED EDITION 765J
AUTO CITY NIGHTS 214H

ACT BW • 65
ADJ WW • 509

	CD	BW	WW	YW	MK	CM	SC	DC	YG	CW	RE	MB	\$MI
11	1.3	63	100	16	7	0.3	16	-.33	28	.83	-.05	50	
55	65	60	55	95	40	95	15	30	30	50	70	75	

OFFERED BY: KLS FARMS

RIGHT TO FLUSH - A conventional flush conducted under the supervision of Four Corners Embryo. Guaranteeing a minimum of 5 embryos with a maximum of 10. Seller pays the flush cost, buyer supplies the semen. Here is your chance to be one of the first to own genetics out of one of the most popular lots from the P Bar S fall sale.

SELECT BREEDERS GENETICS

SELLING CHOICE TO FLUSH ANY ONE OF THESE THREE DIRECT MAGS MANUELA DAUGHTERS TO THE BULL OF THE BUYER'S CHOICE.

TERMS: Selling a conventional flush conducted under the supervision of Pinegar Limousin. Guaranteeing a minimum of 5 embryos with a maximum of 10. Seller pays the flush cost; buyer provides semen. They are ready to flush immediately.



48 | AUTO SUGAR POP 298D ET

9/12/2016 • AUTO 298D • LFF2122223
LIM-FLEX(75/67.6) COW • POLLED • HOMO BLACK (T)

AUTO POWER PLUS 133B ET	EXAR DENVER 2002B EF YADDA YADDA 809Y	EXAR UPSHOT 0562B EXAR ROYAL LASS 1067 DHVO DEUCE 132R MAGS RUFFLES	ACT BW - 72 ADJ WW - 682 ADJ YW - 876
MAGS MANUELA	EXLR LIMITED EDITION 765J AUTO CITY NIGHTS 214H	EXLR POLLED BENCHMARK709G WULFS GLENDA 7021G COLE FIRST DOWN 46D MISS WOLFETTE 9049X	ADJ REA - 12.32 ADJ IMF - 4.37

CD	BW	WW	YW	MK	CM	SC	DC	YG	CW	RE	MB	\$MI
8	3.1	62	99	27	7	1.3	11	-.41	28	.81	-.10	49
95	>95	65	55	10	40	15	65	30	35	30	80	80

OFFERED BY: PINEGAR LIMOUSIN



49 | AUTO SCANDALL 443D ET

9/20/2016 • AUTO 443D • NXF2122447
PERCENTAGE(79/71.8) COW • POLLED • HET BLACK (T)

MAGS AVIATOR	MAGS WINSTON MAGS XTRA REST	BT CROSSOVER 758N MAGS STRAWBERRY DHVO DEUCE 132R MAGS UNREST	ACT BW - 70 ADJ WW - 567 ADJ YW - 825
MAGS MANUELA	EXLR LIMITED EDITION 765J AUTO CITY NIGHTS 214H	EXLR POLLED BENCHMARK709G WULFS GLENDA 7021G COLE FIRST DOWN 46D MISS WOLFETTE 9049X	ADJ REA - 9.48 ADJ IMF - 3.31

CD	BW	WW	YW	MK	CM	SC	DC	YG	CW	RE	MB	\$MI
10	1.8	59	94	21	7	0.3	13	-.39	25	.73	-.11	47
65	75	70	55	55	35	85	45	20	80	75	40	50

OFFERED BY: PINEGAR LIMOUSIN



50 | AUTO BLACK GLAZE 481D ET

10/23/2016 • AUTO 481D • LFF2122445
LIM-FLEX(50/45.1) COW • POLLED • HOMO BLACK (T)

EXAR BLUE CHIP 1877B	DAMERON FIRST CLASS GREENS PRINCESS 1012	EXG RS FIRST RATE S903 R3 DAMERON NORTHERN MISS 311 GREENS PREMIUM 7578 GREENS PRINCESS 7418	ACT BW - 72 ADJ WW - 567 ADJ YW - 756
MAGS MANUELA	EXLR LIMITED EDITION 765J AUTO CITY NIGHTS 214H	EXLR POLLED BENCHMARK709G WULFS GLENDA 7021G COLE FIRST DOWN 46D MISS WOLFETTE 9049X	ADJ REA - 10.07 ADJ IMF - 3.95

CD	BW	WW	YW	MK	CM	SC	DC	YG	CW	RE	MB	\$MI
5	3.7	69	105	22	8	0.7	10	-.13	26	.35	.27	62
>95	>95	30	40	50	20	70	80	35	>95	95	15	15

OFFERED BY: PINEGAR LIMOUSIN

SELECT BREEDERS SPRING BREDS



Selling Choice!

51A | AUTO EVER 233E ET

2/23/2017 • AUTO 233E • NFF2158761
FULLBLOOD(100/100) COW • HORNED • RED

WINTERSHALL JUPITER
HARVEST OLYMPUS
LABORIEUSE

AUTO CLIFF HANGER 194D
AUTO SYBIL 629T
AUTO PATRICE 484P

FLEURI
FAIENCE
FLAMBEAU
FABIOLA (INITIAL ENTRY)
TEXS RANGER PRIMO
YKCC HEART THROB 141W
SOGF SPECIAL K 247B
LAURA'S OPIUM

ACT BW • 70
ADJ WW • 602
ADJ YW • 910

CD	BW	WW	YW	MK	CM	SC	DC	YG	CW	RE	MB	\$MI
6	4.2	59	80	26	2	0.1	4	-97	7	1.36	-.65	32
>95	>95	65	85	10	>95	90	95	65	4	1	>95	95

OFFERED BY: PINEGAR LIMOUSIN
Due 5/10/19 to GLDL Polled Promise 630D (FB/HP)

51B | AUTO EPHIE 237E ET

2/25/2017 • AUTO 237E • NFF2158762
FULLBLOOD(100/100) COW • HORNED • RED

WINTERSHALL JUPITER
HARVEST OLYMPUS
LABORIEUSE

AUTO CLIFF HANGER 194D
AUTO SYBIL 629T
AUTO PATRICE 484P

FLEURI
FAIENCE
FLAMBEAU
FABIOLA (INITIAL ENTRY)
TEXS RANGER PRIMO
YKCC HEART THROB 141W
SOGF SPECIAL K 247B
LAURA'S OPIUM

ACT BW • 72
ADJ WW • 618
ADJ YW • 902

CD	BW	WW	YW	MK	CM	SC	DC	YG	CW	RE	MB	\$MI
6	4.2	59	80	26	2	0.1	4	-97	7	1.36	-.65	32
>95	>95	65	85	10	>95	90	95	65	4	1	>95	95

OFFERED BY: PINEGAR LIMOUSIN
Due 5/10/19 to GLDL Polled Promise 630D (FB/HP)

This pair of fullblood spring bred heifers boast some of the boldest blood the breed has ever seen. By one of the greatest fullblood bulls to ever walk the planet, Harvest Olympus, and out of a daughter of the past National Champion, AUTO Cliff Hanger, these females also have the maternal legend SOGF Special K on the dam side. If you like stout-made cattle with plenty of built-in maternal, meat and muscle, then tie into these one of these two featured lots.

SELECT BREEDERS SPRING BREDS



Lot 52B

Selling Choice!

52A | AUTO EMORY 266E ET

3/19/2017 • AUTO 266E • NFF2135184
FULLBLOOD(100/100) COW • POLLED • RED

1-WAY JUST GORGEOUS
SVL POLLED EXCELLANT 201B
SVL POLLED ELATION 039N

PUB
EAFF AMBER PEARL 419M
SOGF AMBER KRUG 264B

1-WAY POLLED JUSTICE
CRESSMAN GORGEOUS
STZZ POLLED GUTHRIE 826H
SVL POLLED ELEGANCE 608J

MIMOSA
JIGUE
GOLDNVIEW KRUGERRAND
EJPS AMBER

ACT BW • 68
ADJ WW • 591
ADJ YW • 957

CD	BW	WW	YW	MK	CM	SC	DC	YG	CW	RE	MB	\$MI
11	2.3	58	82	25	7	0.2	5	-.95	9	1.46	-.66	31
50	80	70	80	15	35	90	95	50	1	1	>.95	95

OFFERED BY: PINEGAR LIMOUSIN

Due 5/10/19 to GLDL Polled Promise 630D (FB/HP)

52B | AUTO EVANIA 271E ET

3/19/2017 • AUTO 271E • NFF2135103
FULLBLOOD(100/100) COW • POLLED • RED

1-WAY JUST GORGEOUS
SVL POLLED EXCELLANT 201B
SVL POLLED ELATION 039N

PUB
EAFF AMBER PEARL 419M
SOGF AMBER KRUG 264B

1-WAY POLLED JUSTICE
CRESSMAN GORGEOUS
STZZ POLLED GUTHRIE 826H
SVL POLLED ELEGANCE 608J

MIMOSA
JIGUE
GOLDNVIEW KRUGERRAND
EJPS AMBER

ACT BW • 68
ADJ WW • 564
ADJ YW • 949

CD	BW	WW	YW	MK	CM	SC	DC	YG	CW	RE	MB	\$MI
11	2.3	58	82	25	7	0.2	5	-.95	9	1.46	-.66	31
50	80	70	80	15	35	90	95	50	1	1	>.95	95

OFFERED BY: PINEGAR LIMOUSIN

Due 5/10/19 to GLDL Polled Promise 630D (FB/HP)

Another set of flushmate heifers, this time in the Polled Fullblood category. Out of the proven sire of countless sale toppers, SVL Polled Excellant and out of the legendary EAFF Amber Pearl 419M, these two March full sisters have all of the pedigree superiority one could ask for. With Milk, CW and RE EPDs that rank among the breed's elite, there is no reason to think either one of these females couldn't write the next chapter of Fullblood breed history.

SELECT BREEDERS SPRING BREDS



Lot 53

53 AUTO ESSIE 618E

2/7/2017 • AUTO 618E • LFF2135106
LIM-FLEX(75/63.4) COW • HOMO POLLED (T) • HOMO BLACK (T)

AUTO CRUZE 132X
AUTO REAL DEAL 150B
AUTO LUCKIE TOO 423Y

N BAR EMULATION EXT
AUTO TINA 446B ET
AUTO GEMINI 248T

MAGS THE GENERAL
AUTO REBECA 292S
WLR DIRECT HIT
TYEJ DB SERENITY
EMULATION N BAR 5522
N BAR PRIMROSE 2424
GPFF BLAQUE RULON
MAGS MANUELA
ACT BW • 68
ADJ WW • 669
ADJ YW • 823
ADJ REA • 10.49
ADJ IMF • 3.53

	CD	BW	WW	YW	MK	CM	SC	DC	YG	CW	RE	MB	\$MI
8	2.5	64	97	22	5	0.7	8	-36	16	.57	-.21	45	
95	95	55	60	50	80	80	95	75	85	45	95	95	

OFFERED BY: PINEGAR LIMOUSIN

Due 5/23/19 to AUTO Enterprise 100E (HB/HP)

The sire of AUTO Essie 618E, AUTO Real Deal 150B, is getting it done across the country, and you can see why when you evaluate this double Homozygous, 75% Lim-Flex daughter of his. With Manuela on the bottom side, you can't go wrong here.



Lot 54

54 AUTO ELF 608E

1/18/2017 • AUTO 608E • LFF2122545
LIM-FLEX(56/50.7) COW • HOMO POLLED (T) • HOMO BLACK (T)

EXAR DENVER 2002B
AUTO POWER LINE 135B ET
EF YADDA YADDA 809Y

MAGS ROBIN HOOD 276Y
AUTO SARAH 669B
AUTO SARAH 661T

EXAR UPSHOT 0562B
EXAR ROYAL LASS 1067
DHVO DEUCE 132R
MAGS RUFFLES
MAGS UR A ROBIN
MAGS UNDERFOOT
EXAR NEW DESIGN 3903
AUTO MUFFIN 240M
ACT BW • 70
ADJ WW • 595
ADJ YW • 986
ADJ REA • 14.22
ADJ IMF • 3.57

	CD	BW	WW	YW	MK	CM	SC	DC	YG	CW	RE	MB	\$MI
12	2.3	66	103	27	8	1.0	10	-.35	26	.73	.03	54	
40	90	45	45	10	20	35	80	35	50	45	55	55	

OFFERED BY: PINEGAR LIMOUSIN

Due 5/10/19 to AUTO Enterprise 100E (HB/HP)

Spring bred females like AUTO Elf 608E are rare indeed in that they have the bred-in ability to sire show heifers that win and herd bulls that are easy to sell. Study her conformation, elite pedigree and balanced EPDs and realize she belongs in the front pasture.



Lot 55

55 AUTO ELLI 250E ET

3/1/2017 • AUTO 250E • NXF2156670
PERCENTAGE(81/72.5) COW • HOMO POLLED (T) • HOMO BLACK (T)

MAGS Y-AXIS
MAGS BACHELOR
CFLX RAMONA 054U

AUTO BLACK DAKOTA 129J
AUTO NEVA 234N
EXLR LUVLY 087F

TC ABERDEEN 759
MAGS UAHUKA
AUTO DOLLAR GENERAL 122R
KRVN PROGENY 175P
EXLR DAKOTA 353G
DFLC JET SET BPC 34Y
WULFS DAWSON 4421D
AMBL LUVLY 340Y
ACT BW • 70

	CD	BW	WW	YW	MK	CM	SC	DC	YG	CW	RE	MB	\$MI
12	0.0	58	89	26	8	0.6	11	-.53	11	.83	-.20	45	
35	30	75	70	10	20	60	65	65	65	55	50	60	

OFFERED BY: PINEGAR LIMOUSIN

Due 6/12/19 to HBRL Deluxe Package 6114D (HB/HP)

AUTO Elli 250E, is a homozygous black, homozygous polled, high percentage female with tons of built in predictability. Analyze her pedigree and come to you own conclusions, but we feel this is one worthy of a great deal of praise.

SELECT BREEDERS SPRING BREDS

56 | AUTO ELZA 260E ET

3/9/2017 • AUTO 260E • NPF2136288
PUREBRED(100/89) COW • HOMO POLLED (T) • HET BLACK (T)

HUNT MR JOCK 44J	LVLS POLLED JUSTICE 0601E	ACT BW • 66
WULFS YANKEE K689Y	HUNT MISS GIGGLE 129G	ADJ WW • 576
WULFS SOLOIST 6284S	WULFS NOBEL PRIZE 3861N	ADJ YW • 921
	WULFS JOY BELLS 9202J	ADJ REA • 13.12
AUTO BLACK DAKOTA 129J	EXLR DAKOTA 353G	ADJ IMF • 4.05
AUTO NEVA 234N	DFLC JET SET BPC 34Y	
EXLR LUVLY 087F	WULFS DAWSON 4421D	
	AMBL LUVLY 340Y	

CD	BW	WW	YW	MK	CM	SC	DC	YG	CW	RE	MB	\$MI
7	3.6	67	101	27	6	0.6	11	-73	21	1.27	-.22	48
95	>95	25	25	5	50	30	65	10	15	40	15	15

OFFERED BY: PINEGAR LIMOUSIN

Due 5/20/19 to HBRL Deluxe Package 6114D (HB/HP)

A maternal sister to Lot 55, AUTO Elza 260E, is a purebred, homozygous polled daughter of the once top-selling Wulfs Yankee. On the bottom side, she combines two of the most well known and established bloodlines in the business, AUTO Black Dakota and the Luvly cow family.



Lot 56

57 | AUTO EVERLEE 203E ET

1/1/2017 • AUTO 203E • LFF2123608
LIM-FLEX(75/67.6) COW • POLLED • BLACK

TC ABERDEEN 759	C R A BEXTOR 872 5205 608	ACT BW • 72
MAGSY-AXIS	TC BLACKBIRD 4034	ADJ WW • 663
MAGS UAHUKA	DHVO DEUCE 132R	ADJ YW • 901
	CARROUSELS PINA COLADA	ADJ REA • 11.20
EXLR DAKOTA 353G	WULF'S COUNT DOWN 9251C	ADJ IMF • 3.75
EXLR MOLLY 7103K	CANE RIDGE DAPHNE 011D	
EXLR MOLLY 343G	CANE RIDGE POLLED WYATT	
	JCL MOLLY	

CD	BW	WW	YW	MK	CM	SC	DC	YG	CW	RE	MB	\$MI
11	0.5	58	89	25	7	0.8	12	-.53	7	.74	-.33	40
55	40	80	85	20	40	70	55	95	50	10	>95	95

OFFERED BY: PINEGAR LIMOUSIN

Due 5/1/19 to HBRL Deluxe Package 6114D (HB/HP)

The sire of this lot, MAGSY-Axis, has been a go-to Lim-Flex AI sires for more years than we care to count. Combine that with the great and storied Molly cow family on the bottom side and you realize it doesn't get much better than this.



Lot 57

58 | AUTO EVERINE 642E

4/2/2017 • AUTO 642E • LFF2136118
LIM-FLEX(50/44.3) COW • HOMO POLLED (T) • HOMO BLACK (T)

EXAR DENVER 2002B	EXAR UPSHOT 0562B	ACT BW • 68
AUTO LODE UP 137B ET	EXAR ROYAL LASS 1067	ADJ WW • 557
AUTO EXCEPTIONAL 282S	JCL LODESTAR 27L	ADJ YW • 828
	MINE PLD EXCEPTIONAL 981E	ADJ REA • 11.10
C L BURBANK	MAGS REJUVENATOR	ADJ IMF • 7.53
AUTO ARDEN 227A	LH RADIANT 323R	
LOGAN'S 903R	EXLR NEW GENERATION 071M	
	EXAR BLACKBIRD 8364	

CD	BW	WW	YW	MK	CM	SC	DC	YG	CW	RE	MB	\$MI
11	1.0	59	90	20	7	0.7	14	-.15	17	.39	.54	69
55	60	75	80	70	40	80	30	75	>95	95	2	3

OFFERED BY: PINEGAR LIMOUSIN

Due 6/1/19 to AUTO Enterprise 100E (HB/HP)

Here is a homozygous black, homozygous polled, 50% Lim-Flex female that is bred different enough to allow you a variety of mating options. Her service to the up and coming AUTO Enterprise 100E only serves to sweeten the pot.



Lot 58

SELECT BREEDERS SPRING BREDS



Lot 59

59 | AUTO EVERIDE 645E

4/11/2017 • AUTO 645E • LFF2136119
LIM-FLEX(65/59.1) COW • HOMO POLLED (T) • HOMO BLACK (T)

AUTO CRUZE 132X
AUTO SILVERADO 543B
LVLS 8713W

AUTO BLAQUE LABEL 176S
AUTO ISABELLA 639X
AUTO MISS PERCISION 845P

MAGS THE GENERAL
AUTO REBECA 292S
POSS 112 6509
LVLS 8713M
LESF ASPHALT 9N
EXLR REBECA 1019P
EXAR PRECISION 226
AUTO MELINDA 229M

ACT BW • 70
ADJ WW • 560
ADJ YW • 924
ADJ REA • 14.53
ADJ IMF • 4.36

CD	BW	WW	YW	MK	CM	SC	DC	YG	CW	RE	MB	\$MI
9	1.3	61	87	18	5		10	-.45	3	.63	.01	52
85	65	70	85	85	80		80	>.95	75	20	60	60

OFFERED BY: PINEGAR LIMOUSIN

Due 5/1/19 to HBRL Deluxe Package 6114D (HB/HP)

The Pinegar program has been founded on stacking proven cow families an AUTO Everide 645E is a shining example of this proven formula for success. The calf she is carrying by HBRL Deluxe Package should prove to be a valuable coupon.



HBRL DELUXE PACKAGE 6114D • Service Sire of Lot 60

60 | AUTO EVY 629E

3/23/2017 • AUTO 629E • NPF2136110
PUREBRED(87/83.6) COW • POLLED • BLACK

LH RODEMASTER 338R
AUTO GUNN POINT 192Y
AVA JO DHVO 721R

AUTO CLIFF HANGER 194D
AUTO SYBIL 629T
AUTO PATRICE 484P

JCL LODESTAR 27L
VERMILION E BLACKBIRD9546
GPFF BLAQUE RULON
AMY JO DHAN 20L
TEXS RANGER PRIMO
YKCC HEART THROB 141W
SOGF SPECIAL K 247B
LAURA'S OPIUM

ACT BW • 68
ADJ WW • 574
ADJ YW • 841
ADJ REA • 11.57
ADJ IMF • 3.44

CD	BW	WW	YW	MK	CM	SC	DC	YG	CW	RE	MB	\$MI
11	1.6	58	89	25	5	0.3	11	-.76	9	1.03	-.44	38
50	65	70	60	15	70	75	65	50	55	30	70	70

OFFERED BY: PINEGAR LIMOUSIN

Due 5/26/19 to HBRL Deluxe Package 6114D (HB/HP)

This is a high-quality purebred female coming with her first calf by HBRL Deluxe Package. She combines excellent EPDs for both milk and ribeye and should mature into a female anyone would be proud to own.



Lot 61

61 | ENGD MISS 117Y

3/16/2011 • ENGD 117Y • LFF1991037
LIM-FLEX(28/29.1) COW • HOMO POLLED (T) • HOMO BLACK (T)

CONNELLY LEADTIME
CONNELLY LEAD ON
ELIGENCE PLUS OF CONANGA

EF TUNE UP 210T
HAKH WAY TO GO 011W
RVDR TABI 1716T

CONNELLY DATELINE
RUTHS RONA OF CONANGA
T C DIVIDEND 963
EURA CAP OF CONANGA
GPFF BLAQUE RULON
DSUL BEDAZZLED 497K
WK DAKOTA 4003
EXG PILAR 009P RVDR

ACT BW • 65
ADJ WW • 670
ADJ YW • 1,040

CD	BW	WW	YW	MK	CM	SC	DC	YG	CW	RE	MB	\$MI
10	0.1	63	104	34	6	1.2	14	-.20	22	.52	.32	63
65	30	40	25	1	60	15	25	35	85	85	10	10

OFFERED BY: B.F. EVANS CATTLE CO.

Sells 7.5 months bred to AUTO Direct Deposit. Selling half interest and full possession. Take advantage of the opportunity to get in on a homozygous black, homozygous polled, proven producing female whose unique pedigree allows for a variety of mating options. What's more, she has a unique number set with high levels of milk and marbling while bending the curve from birth to yearling.

SELECT BREEDERS SPRING PAIRS

62

AUTO REMI 674D

12/19/2016 • AUTO 674D • NXF2120715
 PERCENTAGE(79/70.7) COW • HET POLLED (T) • DBL BLACK

LH U HAUL 135U
AUTO LUCKY STRIKE 118B
 AUTO LUCKIE 246W

BASIN FRANCHISE P142
 EXLR DUCHESS 7129R
 WLR DIRECT HIT
 TYEJ DB SERENITY

AUTO GUNN POINT 192Y
AUTO KIERA 438A
 MAGS MANUELA

LH RODEMASTER 338R
 AVA JO DHVO 721R
 EXLR LIMITED EDITION 765J
 AUTO CITY NIGHTS 214H

ACT BW • 65
ADJ WW • 710
ADJ YW • 1,363

CD	BW	WW	YW	MK	CM	SC	DC	YG	CW	RE	MB	\$MI
10	2.2	63	100	25	6	0.7	10	-50	17	.81	-.17	47
65	85	50	40	15	55	50	75	45	70	60	45	50

OFFERED BY: PINEGAR LIMOUSIN

LOT 62A: AUTO 638G, a 3/23/19 DB, DP heifer by AUTO Real Deal 150B. BW: 78 lbs.
 Look at the two grandams in the pedigree of AUTO Remi. With AUTO Luckie Too 246W and MAGS Manuela in her heritage, she has all the credentials necessary to be a top producer.



Lot 62

63

AUTO DECAF 453D ET

10/11/2016 • AUTO 453D • LFF2122420
 LIM-FLEX(59/52.2) COW • HOMO POLLED (P1) • HET BLACK (T)

LH U HAUL 135U
 EXLR DUCHESS 7129R

C A FUTURE DIRECTION 5321
 BASIN CHLOE 812L
 EXLR NEW GENERATION 071M
 EXLR 199H

LESF ASPHALT 9N
AUTO REBECA 292S
 EXLR REBECA 1019P

GPFF BLAQUE RULON
 GPFF EXTRA SWEET ELITE
 BR MIDLAND
 EXLR REBECA 614H

ACT BW • 65
ADJ WW • 584
ADJ YW • 787
ADJ REA • 12.54
ADJ IMF • 6.06

CD	BW	WW	YW	MK	CM	SC	DC	YG	CW	RE	MB	\$MI
15	0.0	68	110	26	8	0.9	10	-32	32	.81	.22	61
10	30	35	25	15	20	55	80	20	35	55	20	15

OFFERED BY: PINEGAR LIMOUSIN

LOT 63A: AUTO 534G, a 3/21/19 DB, HP bull by LH Advantage. BW: 70 lbs.
 This female brings many positive attributes to the table, most noticeably, a set of EPDs that is impressive to say the least. She bends the curve from birth to yearling, while expressing high levels of milk and marbling.



Lot 63

64

AUTO SELECT 498D ET

11/14/2016 • AUTO 498D • LFF2123659
 LIM-FLEX(62/55) COW • HET POLLED (T) • HOMO BLACK (T)

DAMERON FIRST CLASS
SBLX FIRST CLASS
 MAGS MANUELA

EXG RS FIRST RATE S903 R3
 DAMERON NORTHERN MISS 311
 EXLR LIMITED EDITION 765J
 AUTO CITY NIGHTS 214H

LESF ASPHALT 9N
AUTO REBECA 292S
 EXLR REBECA 1019P

GPFF BLAQUE RULON
 GPFF EXTRA SWEET ELITE
 BR MIDLAND
 EXLR REBECA 614H

ACT BW • 66
ADJ WW • 597
ADJ YW • 801
ADJ REA • 12.37
ADJ IMF • 4.06

CD	BW	WW	YW	MK	CM	SC	DC	YG	CW	RE	MB	\$MI
9	1.0	63	97	25	5	0.6	9	-33	24	.65	-.03	51
85	60	60	60	20	80	80	85	45	70	50	65	70

OFFERED BY: PINEGAR LIMOUSIN

LOT 64A: AUTO 634G, a 3/18/19 HB, DP heifer by AUTO Power Plus 133B. BW: 74 lbs.
 A direct daughter of the legendary donor, Rebeca 292S with MAGS Manuela serving as her paternal grandam. This particular genetic combination is virtually unrivaled in the Limousin business.



AUTO REBECA 292S • Dam of Lots 63 & 64

SELECT BREEDERS SPRING PAIRS



65 | AUTO RED TULIP 465D ET

10/11/2016 • AUTO 465D • NPF2122805
PUREBRED(100/95.9) COW • POLLED • RED

B BAR COGNAC 1B	RPY PAYNES DERBY 46Z	KAJO RESPONDER 120R	ACT BW • 72	
	ANCHOR B URBAN GIRL	IVY'S POLLED PRINCESS 1P		ADJ WW • 572
AUTO RED PEPPER 216X	AUTO CLIFF HANGER 194D	ROMN MADE TO ORDER	ADJ YW • 751	
	Laura's Echelon	B BAR RED PEPPER		ADJ REA • 11.87
		TEXS RANGER PRIMO		
		YKCC HEART THROB 141W		
		PUNCH		
		SOULES QUEEN 103X		

CD	BW	WW	YW	MK	CM	SC	DC	YG	CW	RE	MB	\$MI
10	2.4	57	83	26	6	0.1	8	-0.81	-1	1.11	-0.51	35
60	80	75	75	10	50	90	85	95	40	15	85	85

OFFERED BY: PINEGAR LIMOUSIN

LOT 65A: AUTO 640G, a 3/28/19 red, DP heifer by LFLC Bank Account. BW: 74 lbs. Red, polled, purebred females are enjoying a great amount of renewed interest in seedstock circles, and AUTO Red Tulip 465D, with her outcross Canadian AI sire on the top side, should prove to be a wise investment.



66 | AUTO CHEYANNE 440C ET

9/15/2015 • AUTO 440C • NPF2101318
PUREBRED(100/87.7) COW • HOMO POLLED (T) • BLACK

MAGS YIP	MAGS THE GENERAL	AUTO DOLLAR GENERAL 122R	ACT BW • 68	
	AUTO CARMINDA 656S	EXLR LUVLY 821M		ADJ WW • 553
CARROUSELS PEACHES 4330P	AUTO BLACK DAKOTA 129J	JCL LODESTAR 27L	ADJ YW • 788	
	ELMW GINNIE P58G	AUTO CARMINDA 872P		ADJ REA • 8.98
		EXLR DAKOTA 353G		
		DFLC JET SET BPC 34Y		
		TCDT MR T.D'S POWER PACK		
		ELMW POLLED ECSTASY 67E		

CD	BW	WW	YW	MK	CM	SC	DC	YG	CW	RE	MB	\$MI
12	1.5	58	93	20	6	0.4	9	-0.58	16	.72	-0.35	40
35	60	70	50	65	50	75	80	25	>95	95	45	60

OFFERED BY: PINEGAR LIMOUSIN

LOT 66A: AUTO 637G, a 3/20/19 DB, HP heifer by DHIL Colt. BW: 68 lbs. The dam of AUTO Cheyanne 440C, Carrousel Peaches, will go down in history as one of the best ever. She has been mated every way possible, always with impeccable results. Look for this female to carry on the proud family tradition.

CARROUSELS PEACHES • Dam of Lot 66



67 | AKLF EMERY 711E

3/5/2017 • AKLF 711E • NPF2120330
PUREBRED(100/85.5) COW • HOMO POLLED (P2) • HOMO BLACK (P1)

AUTO FULL THROTTLE 771R	GPFF BLAQUE RULON	BLACK DIAMOND	ACT BW • 67	
	AUTO MISS DIAMOND 3747N	QUAIL RUN RAMONA BP		ADJ WW • 572
AUTO CATALINA 200C ET	AUTO CRUZE 132X	ANDERS JAG	ADJ YW • 751	
	KRVN SPRITZER 243S	D&M MISS MERCEDES 0190U		ADJ REA • 11.87
		MAGS THE GENERAL		
		AUTO REBECA 292S		
		GPFF BLAQUE RULON		
		WULFS LEMONADE 1182L		

CD	BW	WW	YW	MK	CM	SC	DC	YG	CW	RE	MB	\$MI
13	0.2	65	96	23	8	0.3	7	-0.72	6	1.09	-0.4	41
30	30	35	40	25	20	75	85	70	45	45	55	50

OFFERED BY: ANDREW KAUTSCH

Due by sale day to AKLF 706E. Study the many positive features of this homozygous black, homozygous polled, purebred daughter of AUTO Full Throttle 771R. She bends the curve from birth to yearling while posting an impressive milk EPD that ranks near the top of the breed.

SELECT BREEDERS SPRING PAIRS

68 | MCBN EVENING STAR 708E

1/23/2017 • MCBN 708E • LFF2133348
LIM-FLEX(50/44.9) COW • HOMO POLLED (P1) • HOMO BLACK (T)

AUTO DOLLAR GENERAL 122R
LVLS SECRET WEAPON 4408K
AUTO KYRIA 232K

WOODALL 0002 OF 7133 711B
CONNEALY REFLECTION 771B
WOODALL 7133 OF 376 4712

LVLS FARMER 4G
LVLS 408H
AUTO HACKETT 702H
WULFS HAPPINESS 8136H
CONNEALY REFLECTION
BECKA BETH OF CONANGA 772
CONNEALY 1407 372 1119
WOODALLS 376 OF 827 III

ACT BW • 60

CD	BW	WW	YW	MK	CM	SC	DC	YG	CW	RE	MB	\$MI
17	-1.8	65	98	33	12		13	-.14	28	.46	.25	60
2	5	50	60	1	1		40	30	95	95	15	25

OFFERED BY: PINEGAR LIMOUSIN

LOT 68A: AUTO 531G, a 3/9/19 HB, DP bull by MCBN Dimension 019D. BW: 68 lbs.
The legendary AUTO Dollar General on the top side, combined with outcross Angus genetics on the bottom side, combine for a female that is both phenotypically impressive, but among the breed's elite for 7 economically relevant EPDs.



Lot 68

69 | SKLS 282E

2/14/2017 • SKLS 282E • LFF2135803
LIM-FLEX(65/58.6) COW • DBL POLLED • HOMO BLACK (P1)

MAGS Y-AXIS
TC ABERDEEN 759
MAGS UAHUKA

SKLS208B
MAGS Y SO TANGLED
HSF YUK IT UP

C R A BEXTOR 872 5205 608
TC BLACKBIRD 4034
DHVO DEUCE 132R
CARROUSELS PINA COLADA
MAGS WINSTON
MAGS UNTANGLE
CTCA BUCKEYE BULL 8261U
HIGHLAND RENE

ACT BW • 68

CD	BW	WW	YW	MK	CM	SC	DC	YG	CW	RE	MB	\$MI
12	-0.2	67	106	27	7	0.7	17	-.47	22	.88	-.11	50
40	25	40	35	10	40	70	10	50	25	20	80	75

OFFERED BY: LOGAN HILLS CATTLE CO.

LOT 69A: Heifer born 3/22/19 by SKLS 381E.
MAGS Y-Axis and a daughter of MAGS Y So Tangled merged in impressive fashion to form this homozygous black, 65% Lim-Flex female who is doing a great job with her heifer calf at side.

70 | SKLS 484E

4/20/2017 • SKLS 484E • LFF2135811
LIM-FLEX(70/61.2) COW • DBL POLLED • DBL BLACK

TMCK IGNITION 003A
TMCK ALFALFA 35X
TMCK REBA 901Y

TGBC 229W 040S
EXLR SATURN 040S
COLE 75M

S A V PIONEER 7301
TMCK JOYCE 570U
C L BURBANK
BOHI REBA 258R
CARROUSELS PURE POWER
EXLR BAMBI 787M
COLE FIRST DOWN 46D
COLE 1124A

ACT BW • 77

CD	BW	WW	YW	MK	CM	SC	DC	YG	CW	RE	MB	\$MI
10	1.0	60	92	22	7	0.8	6	-.35	20	.71	-.03	50
70	60	75	75	50	40	70	>95	60	55	45	65	75

OFFERED BY: LOGAN HILLS CATTLE CO.

Due by sale day to SKLS 381E.
A top-notch spring-calving female with many of the breed's most recognizable names littering her pedigree from top to bottom.

71 | AUTO PRIMROSE 457D ET

10/13/2016 • AUTO 457D • LFF2122414
LIM-FLEX(68/61.7) COW • HET POLLED (T) • HOMO BLACK (T)

AUTO POWER LINE 135B ET
EXAR DENVER 2002B
EF YADDA YADDA 809Y

AUTO ZOFIA 439Z
MAGS XYLOID
MAGS MANUELA

EXAR UPSHOT 0562B
EXAR ROYAL LASS 1067
DHVO DEUCE 132R
MAGS RUFFLES
DHVO DEUCE 132R
BOHI RHONDA 314R
EXLR LIMITED EDITION 765J
AUTO CITY NIGHTS 214H

ACT BW • 70
ADJ WW • 595
ADJ YW • 802
ADJ REA • 10.64
ADJ IMF • 2.73

CD	BW	WW	YW	MK	CM	SC	DC	YG	CW	RE	MB	\$MI
10	2.7	62	98	25	8	1.0	13	-.36	29	.75	-.09	49
70	95	65	60	20	20	35	40	25	50	45	80	80

OFFERED BY: PINEGAR LIMOUSIN

LOT 71A: AUTO 533G, a 3/20/19 HB, DP bull by SBLX First Class. BW: 60 lbs.
As we get deeper into the spring pairs, don't let an opportunity to add a high quality, homozygous black female pass you by. Her bull calf by First Class has big time herd bull potential.

72 | AUTO DETOUR 490D ET

11/10/2016 • AUTO 490D • LFF2123621
LIM-FLEX(75/65.5) COW • HET POLLED (T) • HOMO BLACK (P1)

AUTO POWER PLUS 133B ET
EXAR DENVER 2002B
EF YADDA YADDA 809Y

AUTO LUCKIE 246W
WLR DIRECT HIT
TYEJ DB SERENITY

EXAR UPSHOT 0562B
EXAR ROYAL LASS 1067
DHVO DEUCE 132R
MAGS RUFFLES
KRVN NASKAR 013N
MAGS NIGHT AMBUSH
LESF ASPHALT 9N
TYEJ DB SIZZLE

ACT BW • 70
ADJ WW • 539
ADJ YW • 772
ADJ REA • 11.08
ADJ IMF • 3.78

CD	BW	WW	YW	MK	CM	SC	DC	YG	CW	RE	MB	\$MI
10	2.6	60	92	22	6	1.3	10	-.45	15	.77	-.24	43
70	95	75	75	50	60	15	80	80	45	20	95	95

OFFERED BY: PINEGAR LIMOUSIN

LOT 72A: AUTO 536G, a 3/21/19 HB, DP bull by HBRL Deluxe Package 6114D. BW: 76 lbs.
A paternal sister to Lot 71, AUTO Detour 490D is a direct daughter of AUTO Luckie 246W, a proven donor who simply does not miss.

SELECT BREEDERS SPRING PAIRS



Lot 73

73 | AUTO DREE 646C

9/2/2015 • AUTO 646C • LFF2101261
LIM-FLEX(50/44.5) COW • HOMO POLLED (T) • HOMO BLACK (T)

S A V BRILLIANCE 8077
PVF INSIGHT 0129
PVF MISSIE 790

WULFS YANKEE K689Y
AUTO JETTA 473A
AUTO NEVA 234N

S A V BISMARCK 5682
S A V BLACKCAP MAY 5270
P V F NEW HORIZON 001
P V F MISS RAPTOR 024
HUNT MR JOCK 44J
WULFS SOLOIST 6284S
AUTO BLACK DAKOTA 129J
EXLR LUVLY 087F

ACT BW • 60
ADJ WW • 734
ADJ YW • 1,042
ADJ REA • 11.75
ADJ IMF • 4.59

	CD	BW	WW	YW	MK	CM	SC	DC	YG	CW	RE	MB	\$MI
WAVE EPDS	10	1.7	71	113	27	6	.90	13	-.40	49	1.3	.08	58
>95	65	75	10	10	15	60	35	35	1	1	40	45	25

OFFERED BY: PINEGAR LIMOUSIN

LOT 73A: AUTO 532G, a 3/19/19 HB, DP bull by WLR Direct Hit. BW: 78 lbs.

There are many factors to appreciate when analyzing this homozygous black, homozygous polled spring-calving females. Most noticeably is he monster EPDs for WW, YW, MK, YG and CW.



Lot 74

74 | SBLX ZITY NIGHTS

11/9/2012 • SBLX 770Z • LFF2035603
LIM-FLEX(50/45.1) COW • POLLED • HET BLACK (T)

S A V BISMARCK 5682
S A V BRAND NAME 9115
S A V BLACKCAP MAY 5530

EXLR LIMITED EDITION 765J
MAGS MANUELA
AUTO CITY NIGHTS 214H

G A R GRID MAKER
S A V ABIGALE 0451
B C C BUSHWACKER 41-93
S A V MAY 7238
EXLR POLLED BENCHMARK709G
WULFS GLENDA 7021G
COLE FIRST DOWN 46D
MISS WOLFETTE 9049X

ACT BW • 76

	CD	BW	WW	YW	MK	CM	SC	DC	YG	CW	RE	MB	\$MI
WAVE EPDS	6	2.7	65	103	22	4	1.2	12	-.25	38	.71	.00	52
>95	95	95	30	30	55	90	15	45	4	50	75	60	55

OFFERED BY: RIVERSIDE VALLEY FARM

Due by sale day to ELCX Devoted 657D.

One of the most successful flushes ever created at Pinegar Limousin was S A V Brand Name with MAGS Manuela. Here is your chance to own one of those elite creatures.

75 | ELCX VICTORIA 318A

4/15/2013 • ELCX 318A • LFF2042997
LIM-FLEX(43/40.2) COW • HOMO POLLED (T) • HET BLACK (T)

G A R PREDESTINED
AUTO WILL POWER 160X
AUTO REBECA 292S

EXAR NEW DESIGN 3903
AUTO CHRISTY 8889R
AUTO CHRISTY 853N

B/R NEW DESIGN 036
G A R EXT 4206
LESF ASPHALT 9N
EXLR REBECA 1019P
BON VIEW NEW DESIGN 1407
RR MISS EMULOUS 6391
AUTO NO MONEY DOWN 147J
AUTO AERIELA 253G

ACT BW • 70

	CD	BW	WW	YW	MK	CM	SC	DC	YG	CW	RE	MB	\$MI
WAVE EPDS	12	0.3	57	93	24	7	0.8	10	-.24	19	.57	.24	58
>95	35	35	75	55	35	35	50	70	50	75	75	20	25

OFFERED BY: RIVERSIDE VALLEY FARM

Due by sale day to ELCX Devoted 657D.

ELCX Victoria 318A is a homozygous polled top producer whose calf by ELCX Devoted 657D, a homozygous black, homozygous polled, 87% son of ENGD Zip Line, is expressing amazing potential at an early age.

76 | HBRL BALLET 468B

8/20/2014 • HBRL 468B • LFF2057384
LIM-FLEX(50/43.7) COW • HOMO POLLED (T) • HOMO BLACK (P1)

TC ABERDEEN 759
EBFL YPSILANTI 420Y
MAGS RAMADA

COLEMAN PRODUCTION 608
COLE MISS PRODUCTION 938W
COLE 30L

C R A BEXTOR 872 5205 608
TC BLACKBIRD 4034
TNUH BLUE PRINT 245H
MAGS MANDA
GAR PRECISION 1680
COLEMAN BLACKCAP 211
ANDERS JAG
COLE 110G

ACT BW • 86
ADJ WW • 701
ADJ YW • 1,020

	CD	BW	WW	YW	MK	CM	SC	DC	YG	CW	RE	MB	\$MI
WAVE EPDS	7	3.8	78	115	19	3	0.9	12	-.31	27	.76	.21	64
>95	95	>95	5	15	80	95	55	55	35	45	60	20	10

OFFERED BY: RIVERSIDE VALLEY FARM

Due by sale day to ELCX Devoted 657D.

The sire of many show-ring champions, EBFL Ypsilanti combined with one of the breed's most well-known Lim-Flex donors, COLE Miss Production 938W, to produce this double homozygous female who leads the breed with top EPDs for WW, YW, MB and \$MI.

SELECT BREEDERS SPRING PAIRS

77 | BFEC WINDAR 165B

10/26/2014 • BFEC 165B • LFF2082003
LIM-FLEX(50/45) COW • DBL POLLED • DBL BLACK

BT CROSSOVER 758N
MAGS WINSTON
MAGS STRAWBERRY

TC ABERDEEN 759
MAGS ZEMINDAR
MAGS WITCHERY

C A FUTURE DIRECTION 5321
BT ROYAL PRIDE 237G
EXLR NEW GENERATION 071M
MAGS FRUITFUL 487M
C R A BEXTOR 872 5205 608
TC BLACKBIRD 4034
DHVO DEUCE 132R
MAGS STRAWBERRY

ACT BW • 62
ADJ WW • 663
ADJ YW • 901

CD	BW	WW	YW	MK	CM	SC	DC	YG	CW	RE	MB	\$MI
13	-0.4	63	105	26	7	0.4	15	-23	38	.72	.19	58
20	20	40	25	20	35	95	15	4	45	80	25	25

OFFERED BY: B.F. EVANS CATTLE CO.

LOT 77A: Heifer by AUTO Direct Deposit. BW: 72.

This daughter of MAGS Winston has been a top producer as evidenced by her high quality heifer calf at side by AUTO Direct Deposit. Take note of her leading EPDs for CD, BW, YW, MK, DC, YG, MB and \$MI.



MAGS WINSTON • Sire of Lot 77



24/7/365

Real-time. Industry Relevant.

Think Limousin.
Think L365.



The Site That Never Sleeps

405.260.3775 • info@limousin365.com • www.limousin365.com • Like us on



SELECT BREEDERS FALL PAIRS



Lot 78A



Lot 79A

78 | RYNC GLENDA 2083Z

10/6/2012 • RYNC 2083Z • LFF2027146
LIM-FLEX(50/44.8) COW • DBL POLLED • BLACK

EXAR TITLELIST T011 BR MIDLAND
EXAR STONEY 0262B EXG BLACKCAP R054 R3
EXG BLACKBIRD P777 R3 BON VIEW NEW DESIGN 1407
LEACHMAN BLACKBIRD 8087
EXLR NEW GENERATION 071M AUTO BLACK DAKOTA 129J
EXLR GLENDA 286R EXLR LUVLY 084F
EXLR GLENDA 083J WULFS GUARDIAN 5074G
WULFS GLENDA 7021G **ACT BW • 75**

CD	BW	WW	YW	MK	CM	SC	DC	YG	CW	RE	MB	\$MI
14	0.5	56	94	14	8	0.4	15	-.25	21	.51	.37	63
15	40	75	55	>95	20	90	15	40	85	75	10	10

OFFERED BY: DIAMOND HILL CATTLE CO.

AI'd 1/17/19 to LH Advantage 105A. An impressive pair of cattle. The breeding is on point, the EPDs are well above par, and her EMBRYO heifer calf at side is showing worlds of promise.

79 | DHIL ALWAYS YIELD 5696C

9/11/2015 • BDHC 5696C • LFF2092285
LIM-FLEX(46/42.4) COW • HOMO POLLED (P2) • DBL BLACK

MAGS WINSTON BT CROSSOVER 758N
MAGS ZODIAC MAGS STRAWBERRY
MAGS XANTHOUS DHVO DEUCE 132R
BOHI RHONDA 314R
RITO 6EM3 OF 4L1 EMBLAZON O C C EMBLAZON 854E
MAGS ALWAYS YIELD RITA 4L1 OF 2536 208
MAGS PAYDAY
MAGS YIELDED AUTO MS NEW DESIGN 827P **ACT BW • 72**

CD	BW	WW	YW	MK	CM	SC	DC	YG	CW	RE	MB	\$MI
13	0.3	69	116	22	5	0.7	16	-.15	32	.51	.10	56
20	35	20	10	55	75	75	10	15	85	95	40	35

OFFERED BY: DIAMOND HILL CATTLE CO.

AI'd 10/20/18 to CHR Cowboy 107A.

79A | DHIL FAST YIELD 8569F

9/2/2018 • BDHC 8569F • LFF2158524
LIM-FLEX(45/40.8) COW • HOMO POLLED (P3) • DBL BLACK

SIRE: TMCK CASH FLOW 247C MAGS ALI
TMCK NINA 17X **ACT BW • 71**

CD	BW	WW	YW	MK	CM	SC	DC	YG	CW	RE	MB	\$MI
10	1.8	88	144	20	4	1.2	19	-.08	41	.72	.16	63
70	80	1	1	70	90	15	2	5	55	>95	30	15

This MAGS Zodiac daughter is doing a masterful job with her TMCK Cash Flow heifer calf at side. She sells bred to CHR Cowboy 107A to make for a complete genetic package.

78A | DHIL APPLAUSE 8311F ET

10/29/2018 • BDHC 8311F • LFF2159256
LIM-FLEX(48/44.5) COW • HOMO POLLED (P1) • HOMO BLACK (T)

S A V PIONEER 7301 SAV FINAL ANSWER 0035
S A V BLACKBIRD 5297
TMCK HYDRAULIC 17Y RPY PAYNES SIGNAL 6S
HSF WALL OF FAME HSF PENTHOUSE PIN-UP
MAGS Y-AXIS TC ABERDEEN 759
MAGS UAHUKA
TMCK APPLAUSE 301A AHCC WESTWIND W544
TMCK CASUAL 28Y BLEL CASUAL 646S **ACT BW • 78**

CD	BW	WW	YW	MK	CM	SC	DC	YG	CW	RE	MB	\$MI
11	1.6	75	121	24	6	0.7	16	-.29	29	.83	.04	57
55	75	10	10	30	60	70	15	25	30	65	50	35

OFFERED BY: DIAMOND HILL CATTLE CO.

80 | DHIL PRINCESS 5178C ET

9/15/2015 • BDHC 5178C • LFF2102545
LIM-FLEX(31/28.3) COW • HOMO POLLED (P1) • RED

MAGS WINSTON BT CROSSOVER 758N
MAGS YOUR FAITHFUL MAGS STRAWBERRY
MAGS UNFAITHFUL MAGS SAVAGE
MAGS PHYLLIO
35CC RIGHT TIME U266 KF RIGHT TIME 635
35CC PRINCESS X176 BSKF ROSE K8967
35CC PRINCESS S144 RRM ET GRAND CANYON HANNAH
2R1L PRINCESS OF CHATEAU 508 **ACT BW • 71**

CD	BW	WW	YW	MK	CM	SC	DC	YG	CW	RE	MB	\$MI
8	1.2	58	89	22	4		11	-.12	25	.45	.46	65
90	60	70	70	55	90		55	25	90	95	3	10

OFFERED BY: DIAMOND HILL CATTLE CO.

AI'd 1/18/19 to LH Advantage 105A.

80A | DHIL PRINCESS 8517C

11/3/2018 • BDHC 8517F • LFF2158511
LIM-FLEX(40/36.6) COW • HOMO POLLED (P2) • RED

SIRE: AHCC COWBOY KIND C595 ET LSF SAGA 1040Y
AHCC DAKOTA LUVLY R595 **ACT BW • 67**

CD	BW	WW	YW	MK	CM	SC	DC	YG	CW	RE	MB	\$MI
7	1.9	70	109	26	5		8	-.20	29	.54	.08	56
>95	85	25	30	15	80		95	25	85	85	45	40

A homozygous polled, red, fall calving cow who has a smoking good Cowboy Kind heifer calf at side. You can't go wrong when buying pairs with this kind of potential.

SELECT BREEDERS FALL BREDS

Selling Choice!



Lot **81A**

Due 12/10/19 to AUTO Lode Up (HB/HP)
With AUTO Real Deal on the top and JCL Lodestar and MAGS Manuela on the bottom, rest assured AUTO Echo will be a big time producer for years down the road. Factor in her breed leading EPDs for growth and milk, her service to AUTO Lode Up, and realize this is a fall bred female who will have many friends sale day.

81A | AUTO ECHO 285E ET

9/16/2017 • AUTO 285E • NPF2146182
PUREBRED(100/86.1) COW • HOMO POLLED (T) • HOMO BLACK (T)

AUTO CRUZE 132X
AUTO REAL DEAL 150B
AUTO LUCKIE TOO 423Y

MAGS THE GENERAL
AUTO REBECA 292S
WLR DIRECT HIT
TYEJ DB SERENITY
HUNTS HI-LITER 245G
LOGAN'S CHEERLEADER 280G
EXLR LIMITED EDITION 765J
AUTO CITY NIGHTS 214H

ACT BW • 68
ADJ WW • 622
ADJ YW • 878
ADJ REA • 10.06
ADJ IMF • 2.82

JCL LODESTAR 27L
AUTO MANUELA 298S
MAGS MANUELA

CD	BW	WW	YW	MK	CM	SC	DC	YG	CW	RE	MB	\$MI
9	2.7	68	105	23	5	0.6	8	-.51	19	.73	-.37	41
70	85	20	20	25	70	30	85	15	>.95	>.95	50	50

OFFERED BY: PINEGAR LIMOUSIN

81B | AUTO FUNNY GIRL 287E ET

9/18/2017 • AUTO 287E • NPF2146183
PUREBRED(100/86.1) COW • HET POLLED (T) • HET BLACK (T)

AUTO CRUZE 132X
AUTO REAL DEAL 150B
AUTO LUCKIE TOO 423Y

MAGS THE GENERAL
AUTO REBECA 292S
WLR DIRECT HIT
TYEJ DB SERENITY
HUNTS HI-LITER 245G
LOGAN'S CHEERLEADER 280G
EXLR LIMITED EDITION 765J
AUTO CITY NIGHTS 214H

ACT BW • 68
ADJ WW • 680
ADJ YW • 808
ADJ REA • 8.43
ADJ IMF • 3.30

JCL LODESTAR 27L
AUTO MANUELA 298S
MAGS MANUELA

CD	BW	WW	YW	MK	CM	SC	DC	YG	CW	RE	MB	\$MI
9	2.7	68	105	23	5	0.6	8	-.53	20	.81	-.34	43
70	85	20	20	25	70	30	85	15	>.95	>.95	40	40

OFFERED BY: PINEGAR LIMOUSIN

Due 10/10/ 19 to AUTO Black Coffee (HB/HP)
A full sister to Lot 81A, the water is just as deep here. From her pedigree to her EPDs to her real-world performance, AUTO Funny Girl 287E is no laughing matter. Her service to AUTO Black Coffee should result in a phenotypically superior heifer calf that will show or a bull that will mature into an outstanding herd sire.



Lot **81B**

SELECT BREEDERS FALL BREDS



82 | AUTO GRANDE 424E ET

9/15/2017 • AUTO 424E • NFF2146197
FULLBLOOD(100/100) COW • HORNED • RED

WINTERSHALL JUPITER
HARVEST OLYMPUS
LABORIEUSE

FLEURI
FAIENCE
FLAMBEAU
FABIOLA (INITIAL ENTRY)

ACT BW • 69
ADJ WW • 601

AUTO CLIFF HANGER 194D
AUTO SYBIL 629T
AUTO PATRICE 484P

TEXS RANGER PRIMO
YKCC HEART THROB 141W
SOGF SPECIAL K 247B
LAURA'S OPIUM

ADJ YW • 819
ADJ REA • 11.26
ADJ IMF • 2.59

	CD	BW	WW	YW	MK	CM	SC	DC	YG	CW	RE	MB	\$MI
NAME	6	4.2	59	80	26	2	0.1	4	-.96	7	1.33	-.65	32
EPS	>95	>95	65	85	10	>95	90	95	65	10	1	>95	95

OFFERED BY: PINEGAR LIMOUSIN

Due 10/10/19 to AUTO Cliff Hanger (FB/H)

A royally bred fullblood featuring the likes of Harvest Olympus, AUTO Cliff Hanger and SOGF Special K. Choice of her full sibs are being offered as Lots 51A and 51B in the spring bred portion of the offering.

Lot 82



83 | KEN'S DELTA DAWN

3/16/2017 • CTFM 102E • NFF2116319
FULLBLOOD(100/100) COW • POLLED • RED

CFSV POLLED EXCEL 315S
CVER NEW GENERATION 365Z
CF MISS POLLED FOX 067R

LENAPE POLLED LIBERTY
SVL POLLED ELATION 039N
D'HANIS RED FOX 119J
SUNY FAWN 146A-WHIP 2F

ACT BW • 72
ADJ WW • 722

STZZ POLLED YUKON 50E
CF YUKON CHERI 151T
D'HANIS HIGH CHERI 741R

YKCC TOP LINE 180X
MASH WHISPER
COJR HIGH TIDE 236M
SSAM O-CHERI 608F

ADJ YW • 1,059

	CD	BW	WW	YW	MK	CM	SC	DC	YG	CW	RE	MB	\$MI
NAME	8	2.7	60	88	22	6	-0.1	8	-.90	8	1.2	-.58	34
EPS	85	85	60	65	35	50	>95	85	60	25	5	95	90

OFFERED BY: CHISHOLM TRAIL FARMS

PE'd 12/18/18 to 3/15/19 to Carver's Patriot 260E (FB/P)

This polled fullblood daughter of CVER New Generation is long bodied, wide made and sells bred to Carver's Patriot, a polled fullblood son of FL Polled Touchable 311A. It will be difficult to wait until fall to see how this mating progresses.

Lot 83



84 | KEN'S MISS LADONNA LOU 105E

4/1/2017 • CTFM 105E • NFF2117081
FULLBLOOD(100/100) COW • DBL POLLED • RED

CFSV POLLED EXCEL 315S
CVER NEW GENERATION 365Z
CF MISS POLLED FOX 067R

LENAPE POLLED LIBERTY
SVL POLLED ELATION 039N
D'HANIS RED FOX 119J
SUNY FAWN 146A-WHIP 2F

ACT BW • 70
ADJ WW • 648

CFSV POLLED EXCEL 315S
CTFM MISS CLOEY 313X
CHBI CANDY 178H

LENAPE POLLED LIBERTY
SVL POLLED ELATION 039N
OAKM LORD 109E
DSLW SANDHILL SANDI

ADJ YW • 1,054

	CD	BW	WW	YW	MK	CM	SC	DC	YG	CW	RE	MB	\$MI
NAME	8	2.5	60	92	19	5	-0.1	5	-.92	9	1.24	-.57	35
EPS	85	85	60	55	75	70	>95	95	50	15	3	95	85

OFFERED BY: CHISHOLM TRAIL FARMS

PE'd 12/18/18 to 3/15/19 to Carver's Patriot 260E (FB/P)

If you were to draw a picture of a deep bodied, broody, heavy muscled fullblood female, chances are you would end up with an image remarkably similar to Ken's Miss Ladonna Lou 105E. It is hard to let ones like this go.

Lot 84

SELECT BREEDERS FALL BREDS

85 | KEN'S JUBILEE GIRL

4/1/2017 • CTFM 104E • NFF2117080
FULLBLOOD(100/100) COW • DBL POLLED • RED

CFSV POLLED EXCEL 315S
CVER NEW GENERATION 365Z
CF MISS POLLED FOX 067R

LENAPE POLLED LIBERTY
SVL POLLED ELATION 039N
D'HANIS RED FOX 119J
SUNY FAWN 146A-WHIP 2F

STZZ POLLED GUTHRIE 826H
SVL POLLED NINA 228R
SVL NICOLE 504H

STZZ POLLED YUKON 50E
THUNDERATION
GUNSMOKE
WC MISS NADINE 14D

ACT BW • 71

ADJ WW • 652

ADJ YW • 948

CD	BW	WW	YW	MK	CM	SC	DC	YG	CW	RE	MB	\$MI
9	1.8	55	78	18	7	0.0	6	-0.9	10	1.19	-.59	32
70	70	80	90	85	35	>95	90	45	25	5	>95	95

OFFERED BY: CHISHOLM TRAIL FARMS

PE'd 12/18/18 to 3/15/19 to Carver's Patriot 260E (FB/P)

Ken's Jubilee Girl has a tremendous amount of power in her blood with both the Elation and Nadine cow families represented.



Lot 85

86 | ROCKIN' R PRETTY LADY 20E

11/19/2017 • KJRR 20E • NPF2158705
PUREBRED(100/94.8) COW • DBL POLLED • RED

SVL POLLED ADVANCE 534U
SVL POLLED FRANCHISE 986Z
EAFF AMBER PEARL 419M

CFSV POLLED EXCEL 315S
SVL POLLED DUTCHESS 318S
PUB
SOGF AMBER KRUG 264B

ROCKIN' R RANGER 25R
ROCKIN' R LADY 12U
ROCKIN' R BEAUTY 23M

AUTO CURB SIDE 155M
SLVL 436E
SLVL IRONSIDES 6315F
ROCKIN' R BLACK BEAUTY 1H

ACT BW • 85

CD	BW	WW	YW	MK	CM	SC	DC	YG	CW	RE	MB	\$MI
9	3	54	79	25	5	0.1	3	-.82	8	1.14	-.56	33
70	90	85	85	15	70	95	>95	60	35	15	95	95

OFFERED BY: ROCKIN' R RANCH

PE'd 2/14/19 to 3/14/19 to SVL Sir Issac Newton 526E (P,FB).

KJRR 20E is a red, polled, purebred female from the heart of the Rockin' R Ranch herd. Her service to SVL Sir Issac Newton 526E is an exciting mating to say the least.



Lot 86

87 | ROCKIN' R MARIAN'S GIRL 12E

9/25/2017 • KJRR 12E • NPF2128415
PUREBRED(100/99) COW • DBL POLLED • RED

POSTHAVEN POLLED TRISTAN
POSTHAVEN P BRADFORD
CEDAR PATCH P DORITA

POSTHAVEN KNOWN FACTOR
CEDAR PATCH PP HI-SABLE
CFSV POLLED EXCEL 315S
CEDAR PATCH DAYBREAK

ROCKIN' R RANGER 880Y
ROCKIN' R MAID MARIAN 6C
ROCKIN' R LADY 8Z

ENGD UNBRIDLED 832U
SVL POLLED NANCY 443T
SVL POLLED PRECISION 448T
ROCKIN' R DOLLY 22L

ACT BW • 80

ADJ WW • 465

CD	BW	WW	YW	MK	CM	SC	DC	YG	CW	RE	MB	\$MI
8	2.9	62	90	18	5	0.2	3	-.9	11	1.26	-.58	35
85	90	50	60	85	70	85	>95	40	15	5	95	85

OFFERED BY: ROCKIN' R RANCH

PE'd 2/14/19 to 3/14/19 to SVL Sir Issac Newton 526E (P,FB)

Here is an outcross red purebred who combines many positive attributes into a package that is sure to please come sale day.



Lot 87

SELECT BREEDERS FALL BREDS



Lot 88

88 | ROCKIN' R JUSTADREAM 16E

10/8/2017 • KJRR 16E • NFF2136804
FULLBLOOD(100/100) COW • POLLED • RED

SVL POLLED ADVANCE 534U
SVL POLLED FRANCHISE 986Z
EAFF AMBER PEARL 419M

STZZ POLLED GUTHRIE 826H
SVL DREAM GIRL 227R
BCRO AMERICAN DREAM 222ZA

CFSV POLLED EXCEL 315S
SVL POLLED DUTCHESS 318S
PUB
SOGF AMBER KRUG 264B
STZZ POLLED YUKON 50E
THUNDERATION
PUNCH
SPITZ SUE GLO 425S

ACT BW • 70

CD	BW	WW	YW	MK	CM	SC	DC	YG	CW	RE	MB	\$MI
12	0.3	45	64	24	7	-0.1	-1	-0.88	12	1.3	-0.57	30
35	35	>95	>95	20	35	>95	>95	35	10	10	95	95

OFFERED BY: ROCKIN' R RANCH

PE'd 2/14/19 to 3/14/19 to SVL Sir Issac Newton 526E (P,FB)
Rockin' R Justadream 16E is no accident. She is the result of a meticulous attention to matching only the very best fullblood genetics available in the industry.



Lot 89

89 | ROCKIN' R OLYMPIA 17E

10/18/2017 • KJRR 17E • NFF2136809
FULLBLOOD(100/100) COW • DBL POLLED • RED

SVL POLLED ADVANCE 534U
SVL POLLED FRANCHISE 986Z
EAFF AMBER PEARL 419M

SVL POLLED PERFECTION790X
ROCKIN' R OLYMPIA 7B
MISS SUZANNE

CFSV POLLED EXCEL 315S
SVL POLLED DUTCHESS 318S
PUB
SOGF AMBER KRUG 264B
SVL POLLED EXCLUSIVE 412T
SVL POLLED SAHARA 507U
HARVEST OLYMPUS
VOET SASSIE

ACT BW • 75

ADJ WW • 459

CD	BW	WW	YW	MK	CM	SC	DC	YG	CW	RE	MB	\$MI
9	2.3	52	72	25	5	-0.1	1	-0.93	16	1.43	-0.62	31
70	80	90	95	15	70	>95	>95	25	2	2	>95	95

OFFERED BY: ROCKIN' R RANCH

PE'd 2/14/19 to 3/14/19 to SVL Sir Issac Newton 526E (P,FB)
Breed-leading EPDs for both Milk and Ribeye area highlight this impressive polled fullblood lot. She has both EAFF Amber Pearl 419M and Harvest Olympus in her illustrious pedigree.



Lot 90

90 | ROCKIN' R WYNONA'S GIRL 18E

9/20/2017 • KJRR 18E • NFF2136810
FULLBLOOD(100/100) COW • HOMO POLLED (P2) • RED

1-WAY JUST GORGEOUS
SVL POLLED NORMAN 217B
SVL POLLED NATASHA 535U

SVL POLLED EXCLUSIVE 412T
SVL POLLED WYNONA 308C
SVL POLLED WILMA 751X

1-WAY POLLED JUSTICE
CRESSMAN GORGEOUS
CFSV POLLED EXCEL 315S
SVL POLLED NAOMI 232R
EAFF POLLED HUMMER 530P
SVL POLLED ELEGANCE 608J
CFSV POLLED EXCEL 315S
SVL POLLED WENDY 511U

ACT BW • 68

ADJ WW • 582

CD	BW	WW	YW	MK	CM	SC	DC	YG	CW	RE	MB	\$MI
8	2.6	56	82	18	5	0.1	6	-0.92	8	1.29	-0.59	33
85	85	80	80	85	70	90	90	60	10	3	>95	95

OFFERED BY: ROCKIN' R RANCH

PE'd 2/14/19 to 3/14/19 to SVL Sir Issac Newton 526E (P,FB)
Ken Ragsdell and family have been breeding top of the line fullbloods in the Show-Me state for many, many years and this daughter of SVL Polled Norman 217B is the epitome of their diligence.

SELECT BREEDERS FALL BREDS

91 | TMCK PEACHY KEEN 215C ET

2/23/2015 • TMCK 215C • LFF2076599

LIM-FLEX(50/44.3) COW • HOMO POLLED (T) • HOMO BLACK (P2)

MAGS Y-AXIS
TC ABERDEEN 759
MAGS UAHUKA

LFL PEACHES 1032Y
COLE WINDFALL 144W
MAGS SILHOUETTE

C R A BEXTOR 872 5205 608
TC BLACKBIRD 4034
DHVO DEUCE 132R
CARROUSELS PINA COLADA
COLEMAN PRODUCTION 608
COLE MISS FIRSTDOWN 6162S
BR MIDLAND
MAGS LADY ACE

ACT BW • 90
ADJ WW • 757
ADJ YW • 1,088
ADJ REA • 13.78
ADJ IMF • 5.14

CD	BW	WW	YW	MK	CM	SC	DC	YG	CW	RE	MB	\$MI
11	1.6	69	116	22	7	1.3	17	-31	30	.91	.10	57
50	75	20	10	55	35	10	10	15	15	60	40	30

OFFERED BY: STOWERS LIMOUSIN

Due late September to SBLX First Class 707A

This is a tremendous homozygous black, homozygous polled MAGS Y-Axis daughter out of the LFL Peaches 1032Y donor. We expect her calf by SBLX First Class to be one of substance.



Lot 91

92 | TMCK COCO PEBBLES 219C

2/28/2015 • TMCK 219C • LFF2075200

LIM-FLEX(55/49.6) COW • HOMO POLLED (T) • HOMO BLACK (T)

MAGS Y-AXIS
TC ABERDEEN 759
MAGS UAHUKA

TMCK ALWAYS MY BABY 016A
TMCK ALFALFA 35X
HIGHLAND YOU'RE MY BABY

C R A BEXTOR 872 5205 608
TC BLACKBIRD 4034
DHVO DEUCE 132R
CARROUSELS PINA COLADA
S A V PIONEER 7301
TMCK JOYCE 570U
MAGS WAR ADMIRAL
HIGHLAND REBA

ACT BW • 78
ADJ WW • 703
ADJ YW • 1,026
ADJ REA • 14.03
ADJ IMF • 5.91

CD	BW	WW	YW	MK	CM	SC	DC	YG	CW	RE	MB	\$MI
11	1.3	65	102	22	9	1.0	15	-0.4	17	.84	.06	55
50	65	30	30	55	10	35	15	60	25	40	45	40

OFFERED BY: STOWERS LIMOUSIN

AI'd 11/8/18 to CJSL Dauntless 6258D, safe. PE'd 11/20/18 to 1/25/19 to SBLX First Class 707A. Another top-shelf homozygous black, homozygous polled, MAGS Y-Axis daughter from the Stowers program in the Lone Star state. She has breed leading EPDs for growth and docility and sells safe to one of the breed's hottest sires.



Lot 92

93 | PBRs 688D ET

3/3/2016 • PBRs 688D • LFF2111788

LIM-FLEX(37/34.1) COW • HET POLLED (T) • HOMO BLACK (P1)

SBLX FIRST CLASS
DAMERON FIRST CLASS
MAGS MANUELA

FLLR TIGER LILY
MYTTY IN FOCUS
DIAMOND ROSE R051

EXG RS FIRST RATE S903 R3
DAMERON NORTHERN MISS 311
EXLR LIMITED EDITION 765J
AUTO CITY NIGHTS 214H
SAF FOCUS OF ER
MYTTY COUNTESS 906
TNUH BLUE PRINT 245H
FOUNDATION DAM

ACT BW • 65
ADJ WW • 575
ADJ YW • 792
ADJ REA • 7.37
ADJ IMF • 3.19

CD	BW	WW	YW	MK	CM	SC	DC	YG	CW	RE	MB	\$MI
11	0.0	58	88	22	7	1.0	11	-0.6	23	.25	.33	60
50	30	70	70	55	35	35	55	35	>95	>95	10	20

OFFERED BY: STOWERS LIMOUSIN

AI'd 11/9/18 to TASF Crown Royal 960C, safe. PE'd 11/20/18 to 1/25/19 to SBLX First Class 707A. The dam of Lot 93, FLLR Tiger Lily, is known far and wide as a superior donor female. This young fall bred female is one you can build a program around.

94 | SBLX AUBREE

1/2/2013 • SBLX 378A • LFF2035046

LIM-FLEX(50/44) COW • HOMO POLLED (P1) • HOMO BLACK (T)

BOHI TOP DOLLAR 7144T
AUTO DOLLAR GENERAL 122R
CARROUSELS PINA COLADA

LIMESTONE ROYAL LASS T909
G A R PREDESTINED
LIMESTONE ROYAL LASS N702

LVLS SECRET WEAPON 4408K
AUTO KYRIA 232K
AUTO BLACK DAKOTA 129J
ELMW GINNIE P58G
B/R NEW DESIGN 036
G A R EXT 4206
TWIN VALLEY PRECISIONE161
BR ROYAL LASS 7036-19

ACT BW • 79

CD	BW	WW	YW	MK	CM	SC	DC	YG	CW	RE	MB	\$MI
12	1.7	61	96	23	4	1.0	13	-1.3	33	.55	.28	60
35	75	50	50	45	90	25	35	10	80	95	15	20

OFFERED BY: STOWERS LIMOUSIN

AI'd 11/8/18 to CJSL Dauntless 6258D, safe. PE'd 11/20/18 to 1/25/19 to SBLX First Class 707A. The Stowers program dug deep to bring us yet another top notch, homozygous black, homozygous polled Lim-Flex female. Keep us posted on just how good the calf turns out she is carrying by CJSL Dauntless.

SELECT BREEDERS FALL BREDS



Maternal sister to Lot 95

95 | BFEC EYE CANDY 1165E

9/4/2017 • BFEC 1165E • LFF2158919
LIM-FLEX(75/64) COW • DBL POLLED • DBL BLACK

AUTO CRUZE 132X
ACHH POLLED CRUZEWONDER 163B ET
ENGD WONDERLUST 930W

MAGS WINSTON
BFEC WINDAR 165B
MAGS ZEMINDAR

MAGS THE GENERAL
AUTO REBECA 292S
WULFS SIRLOIN 3172S
J BAR J TAKE ME HOME 706T
BT CROSSOVER 758N
MAGS STRAWBERRY
TC ABERDEEN 759
MAGS WITCHERY

ACT BW • 65
ADJ WW • 675

	CD	BW	WW	YW	MK	CM	SC	DC	YG	CW	RE	MB	\$MI
HAIR	13	0.0	68	105	24	7	0.3	13	-.43	24	.85	-.05	52
EPDS	25	30	35	40	30	40	>.95	40	45	30	25	70	60

OFFERED BY: B.F. EVANS CATTLE CO.

4.5 months safe to EXAR Ben Hur 6579B (Angus).

BFEC Eye Candy 1165E is not only balanced in her EPD profile, but she possesses tremendous eye appeal and tons of upside potential.



AUTO CECE 482C • Dam of Lot 96

96 | AUTO CECE DELIGHT 4482E

9/16/2017 • AUTO 4482E • LFF2159154
LIM-FLEX(75/64.4) COW • DBL POLLED • HOMO BLACK (P1)

DAMERON FIRST CLASS
AUTO FIRST CLASS 116A
MAGS MANUELA

AUTO CRUZE 132X
AUTO CECE 482C ET
AUTO GEMINI 248T

EXG RS FIRST RATE S903 R3
DAMERON NORTHERN MISS 311
EXLR LIMITED EDITION 765J
AUTO CITY NIGHTS 214H
MAGS THE GENERAL
AUTO REBECA 292S
GPFF BLAQUE RULON
MAGS MANUELA

ACT BW • 60
ADJ WW • 591

	CD	BW	WW	YW	MK	CM	SC	DC	YG	CW	RE	MB	\$MI
HAIR	8	2.5	68	104	24	6	0.5	9	-.39	23	.66	-.16	48
EPDS	95	95	35	40	30	60	95	85	50	65	35	90	85

OFFERED BY: PINEGAR LIMOUSIN

4 months safe to EXAR Ben Hur 6579B (Angus)

Look at the pedigree standing behind this homozygous black, 75% Lim-Flex fall bred female. Given her many intangibles, this tremendous female has bright days ahead of her.



Lot 97

97 | AUTO HOME MAKER 438E ET

9/24/2017 • AUTO 438E • NPF2146203
PUREBRED(87/78.5) COW • HET POLLED (T) • HOMO BLACK (T)

AUTO BLACK DAKOTA 129J
AUTO SILVERADO 100N
STBR B-P'S RANGERETTE

LESF ASPHALT 9N
AUTO REBECA 292S
EXLR REBECA 1019P

EXLR DAKOTA 353G
DFLC JET SET BPC 34Y
TEXS RANGER TED
POPPY
GPFF BLAQUE RULON
GPFF EXTRA SWEET ELITE
BR MIDLAND
EXLR REBECA 614H

ACT BW • 68
ADJ WW • 666
ADJ YW • 829
ADJ REA • 10.38
ADJ IMF • 3.63

	CD	BW	WW	YW	MK	CM	SC	DC	YG	CW	RE	MB	\$MI
HAIR	11	0.2	56	85	30	6	0.8	8	-.59	10	.8	-.35	39
EPDS	50	30	80	75	1	50	20	85	45	>.95	90	45	65

OFFERED BY: PINEGAR LIMOUSIN

Due 12/10/19 to HBRL Deluxe Package 6114D (HB/HP)

A homozygous black, purebred direct daughter of AUTO Rebeca 292S. Study the lesson and bid accordingly. This is a brood cow deluxe.

SELECT BREEDERS FALL BREDS

98 | AUTO CHOCOLATE CHIP 657E

10/1/2017 • AUTO 657E • LFF2139107
LIM-FLEX(75/68.3) COW • HET POLLED (T) • HET BLACK (T)

HUNTS HI-LITER 245G	WADDLES COBALT 3106	ACT BW • 58
JCL LODESTAR 27L	TNUH MISS C245	ADJ WW • 709
LOGAN'S CHEERLEADER 280G	COLE FIRST DOWN 46D	ADJ YW • 973
	TTCC CONFIDENCE MAKER	ADJ REA • 9.28
PVF INSIGHT 0129	S A V BRILLIANCE 8077	ADJ IMF • 3.93
AUTO CADENCE 419C ET	PVF MISSIE 790	
EXLR MOLLY 7103K	EXLR DAKOTA 353G	
	EXLR MOLLY 343G	

CD	BW	WW	YW	MK	CM	SC	DC	YG	CW	RE	MB	\$MI
13	-0.3	63	102	22	6	0.7	9	-43	32	.99	-.13	48
25	25	60	45	50	60	70	85	20	10	25	85	85

OFFERED BY: PINEGAR LIMOUSIN

Due 10/1/19 to AUTO Power Plus 133B (HB/HP)

Easy calving, yet boasting leading EPDs for ribeye area, make AUTO Chocolate Chip and unique individual. We think her service to AUTO Power Plus will be a hit.



Lot 98

99 | AUTO SECRET 432E ET

9/18/2017 • AUTO 432E • NPF2146202
PUREBRED(100/87.9) COW • HET POLLED (T) • BLACK

DHVO DEUCE 132R	GPFF BLAQUE RULON	ACT BW • 64
MAGS XYLOPOLIST	AMY JO DHAN 20L	ADJ WW • 712
MAGS STRAWBERRY	EXLR NEW GENERATION 071M	ADJ YW • 898
	MAGS FRUITFUL 487M	ADJ REA • 9.92
AUTO BLACK DAKOTA 129J	EXLR DAKOTA 353G	ADJ IMF • 3.06
CARROUSELS PEACHES 4330P	DFLC JET SET BPC 34Y	
ELMW GINNIE P58G	TCDT MR T.D.'S POWER PACK	
	ELMW POLLED ECSTASY 67E	

CD	BW	WW	YW	MK	CM	SC	DC	YG	CW	RE	MB	\$MI
10	1.9	57	90	22	6	0.4	10	-68	13	.96	-.56	33
60	70	75	60	35	50	75	75	35	75	60	95	95

OFFERED BY: PINEGAR LIMOUSIN

Due 10/10/19 to AUTO Cruze 132X (HB/HP)

A direct daughter of the prolific donor, Carrousel Peaches is this Purebred who is by MAGS Xylopolist who has sired a multitude of sale toppers and show champions.

100 | AUTO EARLY BIRD 291E ET

9/21/2017 • AUTO 291E • NPF2146185
PUREBRED(100/89.7) COW • HET POLLED (T) • HOMO BLACK (T)

TMCK DURHAM WHEAT 6030X	DHVO DEUCE 132R	ACT BW • 72
RIVERSTONE CROWN ROYAL	MAGS STRAWBERRY PIE	ADJ WW • 743
HSF YOUR FANTASY	MAGS WAR ADMIRAL	ADJ YW • 883
	HSF TINKERBELL	ADJ REA • 9.82
DHVO DEUCE 132R	GPFF BLAQUE RULON	ADJ IMF • 3.39
SBLX XTRA SPECIAL	AMY JO DHAN 20L	
MAGS MANUELA	EXLR LIMITED EDITION 765J	
	AUTO CITY NIGHTS 214H	

CD	BW	WW	YW	MK	CM	SC	DC	YG	CW	RE	MB	\$MI
8	2.4	60	88	23	6	0.9	12	-.61	9	.90	-.46	36
85	80	60	65	25	50	10	60	50	90	85	75	80

OFFERED BY: PINEGAR LIMOUSIN

Due 10/10/19 to AUTO Power Plus 133B (HB/HP)

We are not saying we saved the best one for last, but as you can tell by her pedigree, she could very well start a lot of sales around the country. As the old saying goes, it pays to stay late, but only if you take advantage of this opportunity.

YOUR FIRST CHOICE

for Free-Choice SupplementationSM

SINCE 1885

For superior performance you can count on contact
Brian Fieser, Ph.D.
Beef Field Nutritionist
Stillwater, OK
405-269-9143

Contact your local sales representative:
Adam McCall
Springfield, MO
417-399-9907

ADM Animal Nutrition™,
Quincy, IL
A division of Archer Daniels
Midland Company
ADMAnimalNutrition.com
866-666-7626
AN_BeefHelp@adm.com

SELECT BREEDERS SEMEN PACKAGES

Selling Choice!

MIX - N - MATCH • 30 STRAWS - \$2,500



Lot 101A

What an exciting and unique opportunity we have here. The opportunity to obtain semen on two of the most sought after bulls from the Pinegar Limousin HerdBuilder Twenty-Five sale this past March. AUTO King David is an AUTO King James 162Z son who stems from incredibly elite genetics. King James' sire is one of the breed's biggest numbered Lim-Flex sires, COLE Windfall 144W. AUTO King David's dam, PBRS Dutches 790X, is a super powerful DHVO Deuce daughter who delivers each time. His milk EPD ranks in the top 15% of the breed. King David captured the coveted All-American Limousin Futurity champion banner in 2018 and was the reserve grand champion bull at the 2019 National Limousin Show at the National Western Stock Show in Denver.

101A | AUTO KING DAVID 120E ET

4/17/2017 • AUTO 120E • LFM2141555

LIM-FLEX(62/54.8) BULL • HET POLLED (T) • HOMO BLACK (T)

COLE WINDFALL 144W
AUTO KING JAMES 162Z
AUTO LUCKIE 246W

COLEMAN PRODUCTION 608
COLE MISS FIRSTDOWN 61625
WLR DIRECT HIT
TYEJ DB SERENITY

ACT BW • 68

ADJ WW • 807

ADJ YW • 1,331

DHVO DEUCE 132R
PBRS DUTCHES 790X
SEDGWICKS DUTCHES 2280

GPFF BLAQUE RULON
AMY JO DHAN 20L
RR 9440 SCOTCH CAP 1483
CIRCLE S DUTCHES 280

ADJ REA • 15.24

ADJ IMF • 3.51

CD	BW	WW	YW	MK	CM	SC	DC	YG	CW	RE	MB	\$MI
10	1.6	63	98	26	6	1.1	11	-.35	34	.81	-.02	51
70	75	60	60	15	60	35	65	15	35	45	65	70

OFFERED BY: JONES BROS./PINEGAR LIMOUSIN

101B | AUTO BLAQUE BLAZER 100F ET

1/1/2018 • AUTO 100F • NPM2151820

PUREBRED(93/84.1) BULL • HOMO POLLED (T) • HOMO BLACK (T)

TMCK DURHAM WHEAT 6030X
RIVERSTONE CROWN ROYAL
HSF YOUR FANTASY

DHVO DEUCE 132R
MAGS STRAWBERRY PIE
MAGS WAR ADMIRAL
HSF TINKERBELL

ACT BW • 66

ADJ WW • 758

ADJ YW • 1,263

COLE ABSOLUTE 05A
CELL MISS RESPONDER 6078D
MAGS YODH

AHCC XPENSE ACCOUNT X516
COLE MISS TRAVELER 029X
DHVO DEUCE 132R
MAGS RAMADA

ADJ REA • 14.64

ADJ IMF • 2.79

CD	BW	WW	YW	MK	CM	SC	DC	YG	CW	RE	MB	\$MI
9	2.4	69	105	23	4	1.1	10	-.57	6	.92	-.44	40
70	80	20	20	25	85	5	75	70	85	95	70	60

OFFERED BY: CIRCLE R RANCH/PINEGAR LIMOUSIN



Lot 101B

AUTO Blaque Blazer 100F is a uniquely designed Riverstone Crown Royal son. He's got great rib shape, stands on an outstanding amount of bone and is great fronted. AUTO Blaque Blazer 100F is out of a COLE Absolute daughter, CELL Miss Responder 6078D. His weaning weight ranks in the top 15% and the top 25% for yearling weight. He is homozygous black and homozygous polled and will no doubt mature into a top herd sire whose offspring will be highly sought after. When you factor in he is a PUREBRED, you will want to take advantage of this opportunity April 27. Circle R Ranch of Florida purchased this herd sire in our HerdBuilder Twenty-Five sale in March.

Thank You



AVERAGES:

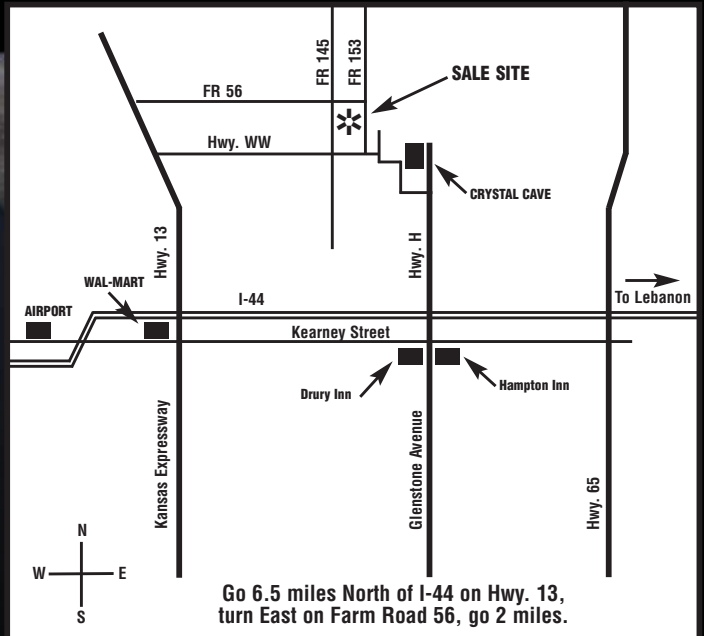
LOTS		TOTAL	AVERAGE
_____	ROAD TO SPRINGFIELD	_____	_____
_____	OPEN HEIFERS	_____	_____
_____	GENETICS	_____	_____
_____	SPRING BREDS	_____	_____
_____	SPRING PAIRS	_____	_____
_____	FALL PAIRS	_____	_____
_____	FALL BREDS	_____	_____
_____	SEMEN PACKAGES	_____	_____
_____	SALE GROSS	_____	_____



PINEGAR

LIMOUSIN

769 E. Hwy. 60
Republic, MO 65738



Go 6.5 miles North of I-44 on Hwy. 13,
turn East on Farm Road 56, go 2 miles.

Map to Pinegar Limousin

APRIL 27, 2019 - 1 P.M.
AT PINEGAR LIMOUSIN - SPRINGFIELD, MISSOURI