

PINEGAR LIMOUSIN

HARVEST TIME II

online sale

OCTOBER 8, 2019

hosted on...L365Auctions.com



hosted on... L365Auctions.com

OFFERING 20 LOTS

LIMOUSIN, FULLBLOOD & LIM-FLEX

5 Open Heifers • 1 Flush • 14 Bred Heifers

BIDDING OPENS ...

7:00 a.m. (CST)

BIDDING CLOSES ...

7:00 p.m. (CST)

SALE-DAY PHONES ...

Ty Heavin.....417.839.5849
Ed Pinegar.....417.833.6784
Randy Ratliff.....615.330.2735

SALE MANAGEMENT ...

 Randall O. Ratliff • 615.330.2735
Randy@RRMktg.com • www.RRMktg.com
(L#2845)

FOR TECHNICAL SUPPORT...

Abby Hinton919.618.8098

CATTLE VIEWING ...

Call/text/email: Ty Heavin at Pinegar Limousin
to view the offering.

TRUCKING ...

Cattle can be picked up at Farm location or we can
assist with trucking (buyer pays trucking expense)

All Credit Cards Accepted



ED & CAROL PINEGAR, OWNERS

TOLL FREE 1.877.PINEGAR • 417.833.6784

850 W. Farm Road 56, Springfield, MO 65803

Ty & Susie Heavin, Farm Managers, 417.839.5849

Hannah McCall, Show Cattle

1

AUTO FIME 638F

LIM-FLEX(62/56.2) • HET POLLED (T) • RED • 12/25/2018 • AUTO 638F • LFF2160813



ACT BW • 68
ADJ WW • 677
ADJ YW • 1,079

LH RODEMASTER 338R
AUTO GUNN POINT 192Y
AVA JO DHVO 721R

BSF OPPORTUNIST Z5
AUTO CAMBER 451C ET
MAGS MANUELA

JCL LODESTAR 27L
VERMILION E BLACKBIRD9546
GPFF BLAQUE RULON
AMY JO DHAN 20L
BSAR OPPORTUNITY 9114
BSF PRINCESS EL CAP W2
EXLR LIMITED EDITION 765J
AUTO CITY NIGHTS 214H

	CED	BW	WW	YW	MK	CEM	SC	DOC	YG	CW	RE	MB	\$MTI
EPDS	6	2.7	68	105	24	4	0.7	12	-.47	34	.89	-.06	52
%RANK	>95	95	35	40	30	90	75	50	20	20	25	65	60

Open Heifer

- Kicking off the sale and the open heifer portion of the offering is the stunning daughter of AUTO Gunn Point 192Y out of own daughter of the breed legend MAGS Manuela. Chapters have been written on the Manuela cow family and this granddaughter is sure to carry on the legacy. AUTO Fime 638F packs a lot of style and balance into a package that will stop judges in their tracks. Be sure you're the one leading her in the show ring.
- Ranks in the top 25% or better for YG, CW & RE

2

AUTO GAZE CATCHER 213G ET

LIM-FLEX(43/39.3) • HOMO POLLED (T) • HOMO BLACK (T) • 2/1/2019 • AUTO 213G • LFF2167257



ACT BW • 71
ADJ WW • 640

S A V BRILLIANCE 8077
PVF INSIGHT 0129
PVF MISSIE 790

MAGS XYLOID
AUTO ZOFIA 439Z
MAGS MANUELA

S A V BISMARCK 5682
S A V BLACKCAP MAY 5270
P V F NEW HORIZON 001
P V F MISS RAPTOR 024
DHVO DEUCE 132R
BOHI RHONDA 314R
EXLR LIMITED EDITION 765J
AUTO CITY NIGHTS 214H

	CED	BW	WW	YW	MK	CEM	SC	DOC	YG	CW	RE	MB	\$MTI
EPDS	10	1.6	66	105	25	6	1.2	14	-.28	50	1.12	.01	53
%RANK	70	75	45	40	25	60	20	25	65	2	3	50	55

Open Heifer

- Homozygous Polled & Homozygous Black
- Her name says it all—Gaze Catcher. You'll catch many gazing at the halter of this attractive February heifer. She gets her stylish looks from the popular Angus bull PVF Insight and the banner winner AUTO Zofia 439Z, a Manuela daughter. Zofia claimed numerous banners in her day for Cody, and she is continuing that winning tradition in the pasture. When you study this female, you'll appreciate the blending of Angus on top of the Manuela daughter, Zofia.
- Ranks in the top 25% or better for MK, SC, DC, CW & RE

3

AUTO GISSELLE 253G ET

LIM-FLEX(54/49.2) • HET POLLED (T) • HOMO BLACK (T) • 3/19/2019 • AUTO 253G • LFF2166786



ACT BW • 72
ADJ WW • 588

MAGS WINSTON
MAGS AVIATOR
MAGS XTRA REST

EXAR BLUE CHIP 1877B
AUTO DONELLA 210D ET
AUTO GEMINI 248T

BT CROSSOVER 758N
MAGS STRAWBERRY
DHVO DEUCE 132R
MAGS UNREST
DAMERON FIRST CLASS
GREENS PRINCESS 1012
GPFF BLAQUE RULON
MAGS MANUELA

	CED	BW	WW	YW	MK	CEM	SC	DOC	YG	CW	RE	MB	\$MTI
EPDS	11	1.2	68	104	14	8	0.3	13	-.20	31	.71	.13	57
%RANK	50	60	35	45	>95	20	>95	40	85	30	60	30	30

Open Heifer

- Homozygous Black
- I think we would all agree, Aviator daughters are as popular in the show ring as they are in the pasture. AUTO Gissell 253G is one of those Aviator daughters you can't wait to haul to the show and when that career is over, you'll like looking at her in your pasture. Her dam, AUTO Donella 210D, was in the White Valley donor pen and is now working in the Davis Limousin donor pen in Texas. Gissell has a phenomenal look to go with her big, square hip, clean neckline and tons of center mass. She also moves out freely and strikes that winning pose every time she stops.

4

AUTO GRACIOUS 226G ET

LIM-FLEX(50/44.9) • POLLED • HET BLACK (T) • 3/2/2019 • AUTO 226G • LFF2166576



ACT BW • 67
ADJ WW • 682

DAMERON FIRST CLASS
COLBURN PRIMO 5153
SILVEIRAS SARAS DREAM 1339

DHVO DEUCE 132R
AUTO FOREVER 219X
MAGS MANUELA

EXG RS FIRST RATE S903 R3
DAMERON NORTHERN MISS 311
SILVEIRAS STYLE 9303
EXG SARAS DREAM S609 R3
GPFF BLAQUE RULON
AMY JO DHAN 20L
EXLR LIMITED EDITION 765J
AUTO CITY NIGHTS 214H

	CED	BW	WW	YW	MK	CEM	SC	DOC	YG	CW	RE	MB	\$MTI
EPDS	9	2.0	67	100	21	8	0.8	10	-.25	26	.68	.02	53
%RANK	80	85	40	55	65	20	65	80	75	45	65	50	55

Open Heifer

- Well good gracious! This March baby has the striking look of a future champion. Melding together the genetics of the popular Angus show sire, Colburn Primo 5153, and one of our can't-miss donors, AUTO Forever 219X has created a show heifer who will take the tan bark by storm. AUTO Gracious 226G will have you in the winner's circle numerous times. Judges will appreciate her feminine makeup and ability to move freely.
- Ranks in the top 20% for CEM

5

AUTO GRAMMIE 636G

LIM-FLEX(64/58.4) • HET POLLED (T) • HOMO BLACK (T) • 2/22/2019 • AUTO 636G • LFF2167264



ACT BW • 67
ADJ WW • 655

EXAR DENVER 2002B
AUTO POWER PLUS 133B ET
EF YADDA YADDA 809Y

MAGS AVIATOR
AUTO SCANDALL 443D ET
MAGS MANUELA

EXAR UPSHOT 0562B
EXAR ROYAL LASS 1067
DHVO DEUCE 132R
MAGS RUFFLES
MAGS WINSTON
MAGS XTRA REST
EXLR LIMITED EDITION 765J
AUTO CITY NIGHTS 214H

	CED	BW	WW	YW	MK	CEM	SC	DOC	YG	CW	RE	MB	\$MTI
EPDS	10	2.6	66	104	24	8	1.2	12	-.34	34	.90	-.03	52
%RANK	70	95	45	45	30	20	30	50	50	20	25	60	60

Open Heifer

- Homozygous Black
- She may have an old-timey name, but this little darling definitely has a youthful look. AUTO Grammie 636G is from AUTO Power Plus, a son of the popular Angus sire EXAR Denver 2002B, working in the Stowers herd in Texas. He has some tremendous progeny on the ground. Her dam, AUTO Scandall, is a Manuela daughter. When you study her pedigree, you will find greatness stacked upon greatness.
- Ranks in the top 25% or better in CEM, CW and RE

6

AUTO LUCKY CLOVER 469E ET

LIM-FLEX(75/65.5) • HET POLLED (T) • HOMO BLACK (T) • 12/4/2017 • AUTO 469E • LFF2139817

ACT BW • 68
ADJ WW • 548
ADJ YW • 1,046
ADJ FAT • .45
ADJ REA • 12.84
ADJ IMF • 3.46

EXAR DENVER 2002B
AUTO POWER PLUS 133B ET
 EF YADDA YADDA 809Y

WLR DIRECT HIT
AUTO LUCKIE 246W
 TYEJ DB SERENITY

EXAR UPSHOT 0562B
 EXAR ROYAL LASS 1067
 DHVO DEUCE 132R
 MAGS RUFFLES
 KRVN NASKAR 013N
 MAGS NIGHT AMBUSH
 LESF ASPHALT 9N
 TYEJ DB SIZZLE

	CED	BW	WW	YW	MK	CEM	SC	DOC	YG	CW	RE	MB	\$MTI
EPDS	9	2.9	62	95	23	6	1.4	9	-.48	17	.88	-.28	43
%RANK	80	95	65	70	45	60	15	85	20	80	25	>95	>95

Selling A Flush • Guarantee of 6 conventional embryos.

- Homozygous Black
- Selling a flush to the bull of the buyer's choice.
- AUTO Lucky Clover 469E is a female you dream of raising and having in your pasture. She has found her way to the winner's circle numerous times and was the Supreme Champion Female at the Ozark Empire Fair Junior Show this past July. When you study her phenotype you fall in love with her depth of rib, stoutness of bone and ease of movement. Lucky Clover has been praised for having that "Wow" factor when she steps out on the tan bark. Looking closer at her pedigree you realize she's not an accident, she was bred to be this good. She is out of the Stowers Limousin herd sire, AUTO Power Plus, and from AUTO Luckie 246W, a many-time champion herself. The mating possibilities are limitless when it comes to a female like Lucky Clover.
- Ranks in the top 25% or better in SC, YG & RE



7 AUTO ECHO 285E ET

PUREBRED(100/86.1) • HOMO POLLED (T) • HOMO BLACK (T) • 9/16/2017 • AUTO 285E • NPF2146182



ACT BW • 68
ADJ WW • 622
ADJ YW • 856
ADJ FAT • .07
ADJ REA • 10.06
ADJ IMF • 2.82

AUTO CRUZE 132X
AUTO REAL DEAL 150B
 AUTO LUCKIE TOO 423Y

JCL LODESTAR 27L
AUTO MANUELA 298S
 MAGS MANUELA

MAGS THE GENERAL
 AUTO REBECA 292S
 WLR DIRECT HIT
 TYEJ DB SERENITY
 HUNTS HI-LITER 245G
 LOGAN'S CHEERLEADER 280G
 EXLR LIMITED EDITION 765J
 AUTO CITY NIGHTS 214H

	CED	BW	WW	YW	MK	CEM	SC	DOC	YG	CW	RE	MB	\$MTI
EPDS	8	2.8	69	108	23	4	0.8	8	-.54	27	.92	-.40	41
%RANK	80	85	20	15	35	85	20	80	>95	10	90	50	45

Due 10/12/19 to AUTO Lode Up 137B (HP/HB)

- Homozygous Polled & Homozygous Black
- Kicking off the bred females is AUTO Echo 285E. This broody-looking daughter of AUTO Real Deal, the herd sire working in Begert Limousin's pastures in Texas, is out of the ever-reliable AUTO Manuela 298S donor, and is one you'll want on your must-have list. She'll produce the good ones for years to come. Study her phenotype and we think you'll agree, she is good.
- She is due to AUTO Lode Up 137B, the double homozygous Summers Limousin Ranch herd sire who is a son of EXAR Denver out of ever-consistent AUTO Exceptional 282S donor for Buck Ridge Cattle Co.
- Ranks in the top 20% or better for WW, YW, SC & CW

8

AUTO EXCEPTIONAL 410E ET

LIM-FLEX(50/45) • HET POLLED (T) • HET BLACK (T) • 10/18/2017 • AUTO 410E • LFF2139119



ACT BW • 64
ADJ WW • 835
ADJ YW • 1,087
ADJ FAT • .26
ADJ REA • 12.41
ADJ IMF • 3.82

EXAR DENVER 2002B
AUTO POWER PLUS 133B ET
EF YADDA YADDA 809Y

MYTTY IN FOCUS
SBLX UNKNOWN 104U
MAGS MANUELA

EXAR UPSHOT 0562B
EXAR ROYAL LASS 1067
DHVO DEUCE 132R
MAGS RUFFLES
S A F FOCUS OF E R
MYTTY COUNTESS 906
EXLR LIMITED EDITION 765J
AUTO CITY NIGHTS 214H

	CED	BW	WW	YW	MK	CEM	SC	DOC	YG	CW	RE	MB	\$MTI
EPDS	12	1.0	63	100	26	9	1.8	12	-.24	28	.64	.08	54
%RANK	35	55	60	55	15	10	3	50	80	40	75	40	45

Due 11/24/19 to AUTO King David 120E (HetP/HB)

- The good ones keep on coming. AUTO Exceptional 410E has a who's who pedigree—one stacked with greatness and predictability. You'll appreciate her for her look; who wouldn't want a cow like this in their pastures? But you'll love her for the calf she's carrying.
- She's due to AUTO King David 120E, the homozygous black son of AUTO King James out of the famed PBRS Dutches 790X donor owned by Jones Brothers. King David was the 2018 AALF Grand Champion and 2019 NWSS Reserve Grand Champion Bull. This will be an exciting calf.
- Ranks in the top 15% or better in MK, CM & SC

9

AUTO CREAM & SUGAR 660E

LIM-FLEX(68/57.7) • HET POLLED (T) • HOMO BLACK (T) • 9/10/2017 • AUTO 660E • LFF2146067



ACT BW • 58
ADJ WW • 570
ADJ YW • 861
ADJ FAT • .14
ADJ REA • 11.58
ADJ IMF • 3.17

MAGS XYLOPOLIST
AUTO BLACK COFFEE 512A
AUTO COFFE CAKE 699W

S A V BRAND NAME 9115
AUTO CAROLINA 412C ET
AUTO REBECA 292S

DHVO DEUCE 132R
MAGS STRAWBERRY
AUTO BLAQUE LABEL 176S
AUTO RAMONA 257T
S A V BISMARCK 5682
S A V BLACKCAP MAY 5530
LESF ASPHALT 9N
EXLR REBECA 1019P

	CED	BW	WW	YW	MK	CEM	SC	DOC	YG	CW	RE	MB	\$MTI
EPDS	11	0.2	70	113	21	6	1.0	12	-41	27	.91	-.22	47
%RANK	50	30	30	20	65	60	55	50	30	45	20	95	90

Due 11/12/19 to AUTO King David 120E (HetP/HB)

- Homozygous Black
- I'll take mine with Cream & Sugar please. AUTO Cream & Sugar 660E the right kind of female. Moderate in her frame, she has the maternal look to produce sound, functional cattle for years to come. Her sire, AUTO Black Coffee, is a herd sire for the Begert and Keeton programs in Texas, who has been leaving a solid set of calves on the ground. Her dam goes back to the can't-miss donor, AUTO Rebeca 292, she truly never misses no matter the sire. Cream & Sugar is the total package with a sound set of numbers behind her.
- She is carrying a calf by AUTO King David 120E, the homozygous black son of AUTO King James out of the famed PBRS Dutches 790X donor owned by Jones Brothers. King David was the 2018 AALF Grand Champion and 2019 NWSS Reserve Grand Champion Bull.
- Ranks in the top 30% or better for BW, WW, YW, YG & RE

10

AUTO FOLGERS 658E

LIM-FLEX(75/63.9) • DBL POLLED • HOMO BLACK (P1) • 9/20/2017 • AUTO 658E • LFF2146066



ACT BW • 50
ADJ WW • 645
ADJ YW • 862
ADJ FAT • .11
ADJ REA • 8.51
ADJ IMF • 2.54

MAGS XYLOPOLIST
AUTO BLACK COFFEE 512A
AUTO COFFE CAKE 699W

MAGS YIP
AUTO CARNIE 429C ET
EXG E839 1407 M175 LS

DHVO DEUCE 132R
MAGS STRAWBERRY
AUTO BLAQUE LABEL 176S
AUTO RAMONA 257T
MAGS THE GENERAL
AUTO CARMINDA 656S
BON VIEW NEW DESIGN 1407
PAF 4019 6807 E839

	CED	BW	WW	YW	MK	CEM	SC	DOC	YG	CW	RE	MB	\$MTI
EPDS	13	-0.8	66	105	23	7	0.7	11	-.33	31	.63	-.14	48
%RANK	20	15	45	40	45	35	75	65	50	30	75	80	85

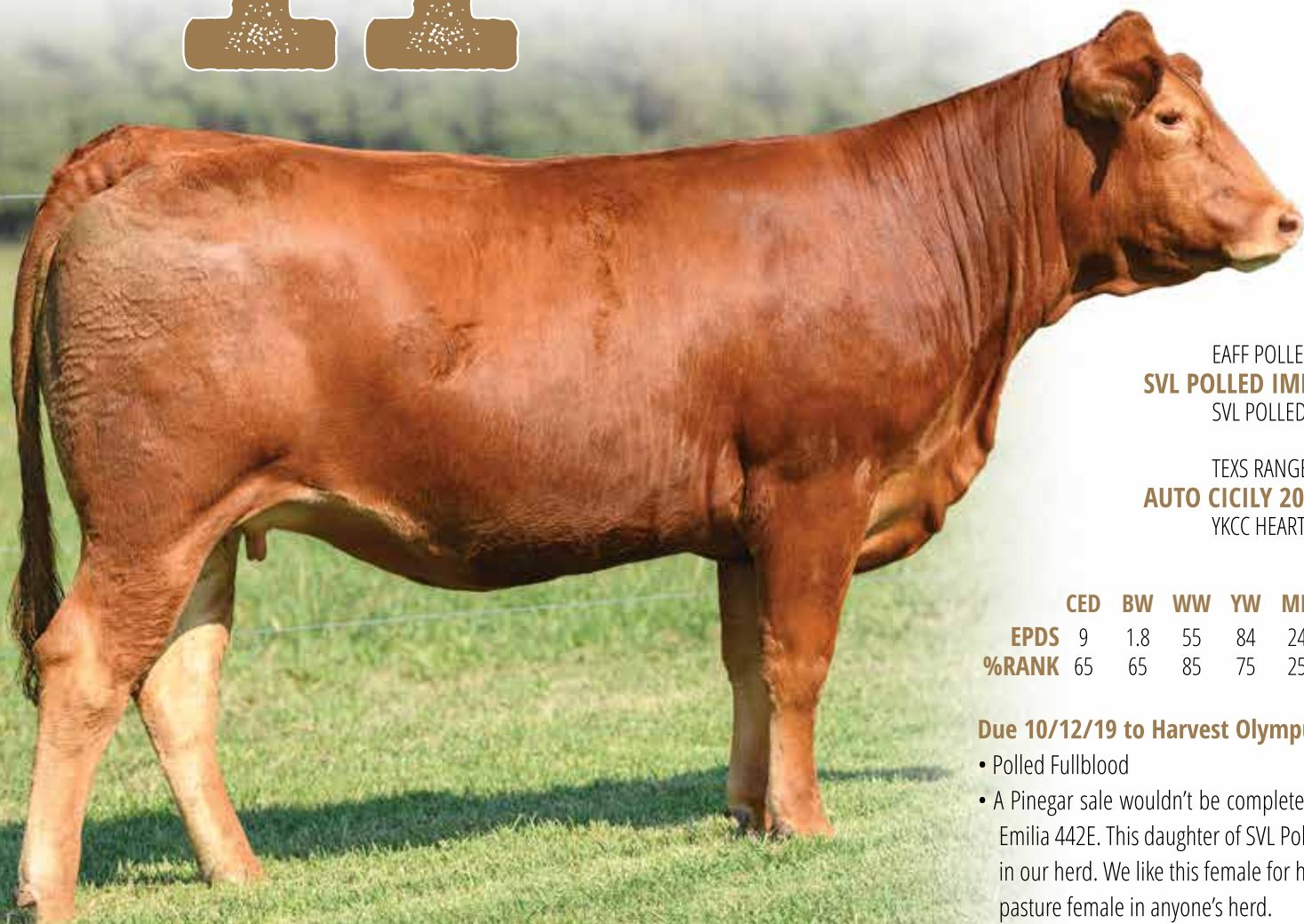
Due 10/12/19 to HBRL Deluxe Package 6114D (HP/HB)

- Fill up with AUTO Folgers 658E. This daughter AUTO Black Coffee, the herd sire for the Begert and Keeton programs in Texas, brings many positives to the table. She has a low birth weight stacked with growth and maternal ability.
- She is carrying a calf by the popular and big-numbered, HBRL Deluxe Package 6114D sire owned with Buck Ridge Cattle Co. He's a double homozygous son of MAGS Zodiac out of HBRL Bambi.

11

AUTO EMILIA 442E ET

FULLBLOOD(100/100) • POLLED • RED • 9/25/2017 • AUTO 442E • NFF2146207



ACT BW • 68
ADJ WW • 622
ADJ YW • 830
ADJ FAT • .10
ADJ REA • 11.75
ADJ IMF • 3.52

EAFF POLLED HUMMER 530P
SVL POLLED IMPACT 516U
SVL POLLED ELEGANCE 608J

TEXS RANGER PRIMO
AUTO CICILY 200P
YKCC HEART THROB 141W

MINE GOLD MEDAL 436G
SOGF AMBER KRUG 264B
MH VELOCITY
OAK-E'S BELL RINGER 303C
TEXS RANGER EL PRESIDENTE
TEXS STAR LUV
URANUS
MS TGJS PETTICOAT 129 R

	CED	BW	WW	YW	MK	CEM	SC	DOC	YG	CW	RE	MB	\$MTI
EPDS	9	1.8	55	84	24	6	0.1	8	-.93	10	1.36	-.55	34
%RANK	65	65	85	75	25	50	90	80	2	65	4	90	85

Due 10/12/19 to Harvest Olympus (FB/R)

- Polled Fullblood
- A Pinegar sale wouldn't be complete without a few Fullbloods in the mix. First up is AUTO Emilia 442E. This daughter of SVL Polled Impact is out of AUTO Cicily 200P, a longtime donor in our herd. We like this female for her feminine look and sound structure. She'd be a front pasture female in anyone's herd.
- She is carrying a calf by the legendary Fullblood sire, Harvest Olympus. The Harvest Olympus calves are getting harder and harder to come by so take advantage of this opportunity.
- Ranks in the top 25% or better in MK, YG & RE

12

AUTO POPPE 242E

FULLBLOOD(100/100) • HORNED • RED • 3/1/2017 • AUTO 242E • APPLIED



ACT BW • 70
ADJ WW • 699
ADJ YW • 1,018

WINTERSHALL JUPITER
HARVEST OLYMPUS
LABORIEUSE

AUTO CLIFF HANGER 194D
AUTO SYBIL 629T
AUTO PATRICE 484P

FLEURI
FAIENCE
FLAMBEAU
FABIOLA
TEXS RANGER PRIMO
YKCC HEART THROB 141W
SOGF SPECIAL K 247B
LAURA'S OPIUM

	CED	BW	WW	YW	MK	CEM	SC	DOC	YG	CW	RE	MB	\$MTI
EPDS	6	4.4	60	82	27	2	0.2	4	-98	3	1.29	-.68	31

Due 10/12/19 to AUTO Cliff Hanger 194D (FB/R)

- Fullblood
- Our second Fullblood female is this attractive own daughter of Harvest Olympus out of AUTO Sybil 629T. AUTO Poppe 242E has that true Limousin look about her. Females like this are the reason we got in the Limousin business some 28 years ago. It doesn't matter if they are Fullblood, Purebred or Lim-Flex, when they are this good, you want to fill your pastures full of them. You can mate her multiple ways and always have a calf that's marketable.
- She's carrying a calf by AUTO Cliff Hanger 194D, the Fullblood bull who won the 1996 All-American Futurity and left numerous top females in production.

13

MECC EPIPHANY 702E ET

LIM-FLEX(75/63.4) • HOMO POLLED (T) • HOMO BLACK (P2) • 12/15/2017 • MHEE 702E • LFF2139576



ACT BW • 75
ADJ WW • 685
ADJ YW •
ADJ FAT • .14
ADJ REA • 9.25
ADJ IMF • 3.53

AUTO CRUZE 132X
AUTO REAL DEAL 150B
AUTO LUCKIE TOO 423Y

CONNELY CONSENSUS 7229
AUTO MABELLINE 267Z
MAGS MANUELA

MAGS THE GENERAL
AUTO REBECA 292S
WLR DIRECT HIT
TYEJ DB SERENITY
CONNELY CONSENSUS
BLUE LILLY OF CONANGA 16
EXLR LIMITED EDITION 765J
AUTO CITY NIGHTS 214H

	CED	BW	WW	YW	MK	CEM	SC	DOC	YG	CW	RE	MB	\$MTI
EPDS	8	2.5	67	101	24	3	1.2	10	-.39	26	.76	-.07	51
%RANK	90	95	40	55	30	95	30	80	35	45	50	70	65

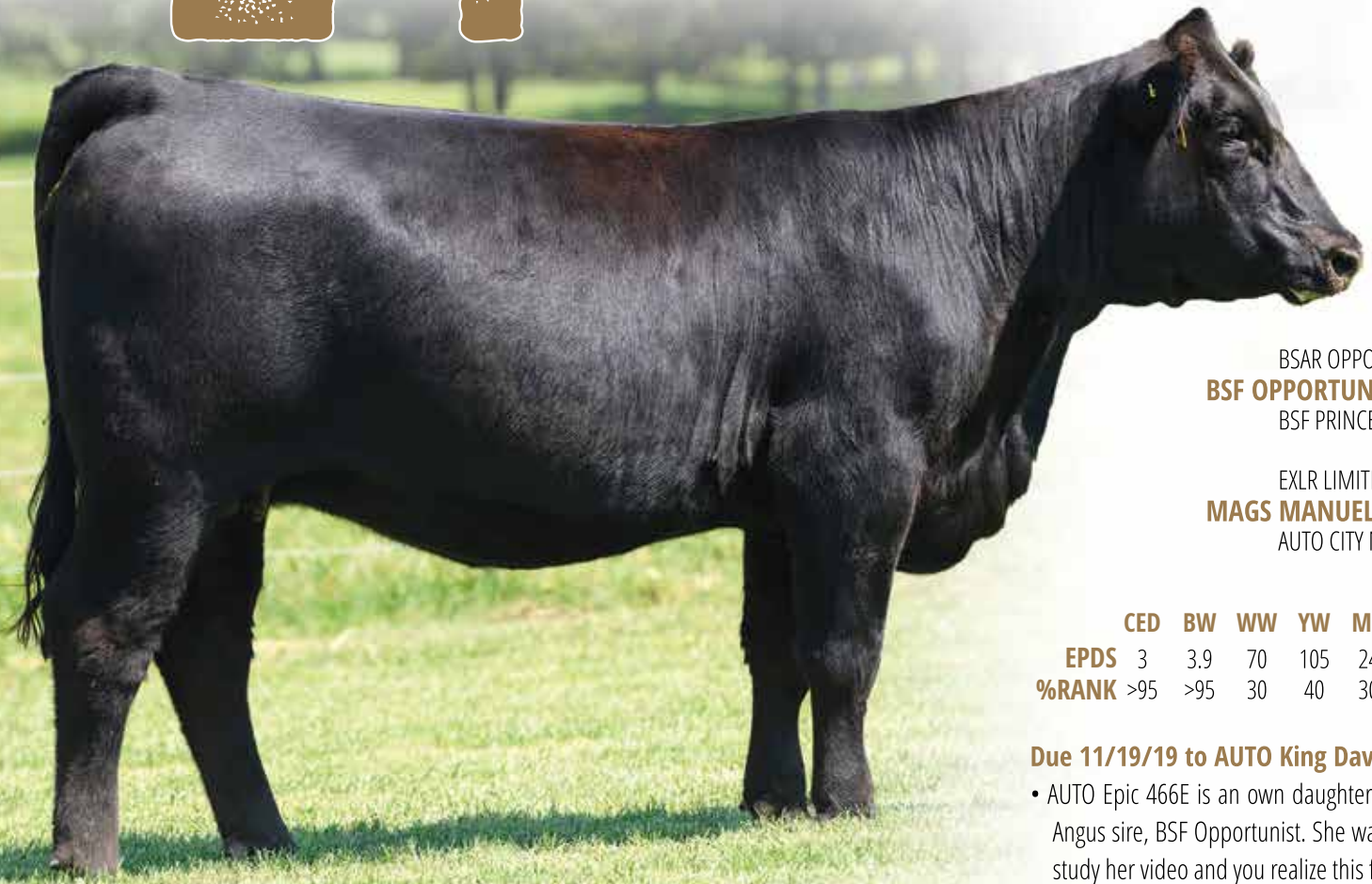
Due 12/3/19 to AUTO King David 120E (HetP/HB)

- Homozygous Polled & Homozygous Black
- We had an Epiphany! This daughter of AUTO Real Deal, the Begert herd sire, out of the 2014 NWSS Grand Champion Lim-Flex Female for Micah Edwards, AUTO Mabelline 267Z, has the look of a producing machine. Study her pedigree, it's lined with breed leaders and you'll even find her maternal grandam is none other than the legendary MAGS Manuela.
- She's carrying a calf by AUTO King David 120E, the homozygous black son of AUTO King James out of the famed PBR's Dutches 790X donor owned by Jones Brothers. King David was the 2018 AALF Grand Champion and 2019 NWSS Reserve Grand Champion Bull.

14

AUTO EPIC 466E ET

LIM-FLEX(50/45.1) • POLLED • HET BLACK (T) • 11/10/2017 • AUTO 466E • LFF2139126



ACT BW • 62
ADJ WW • 799
ADJ YW • 1,039
ADJ FAT • .13
ADJ REA • 8.68
ADJ IMF • 3.73

BSAR OPPORTUNITY 9114
BSF OPPORTUNIST Z5
BSF PRINCESS EL CAP W2

EXLR LIMITED EDITION 765J
MAGS MANUELA
AUTO CITY NIGHTS 214H

BSAR DESIGN DOCTOR 0910
BISHOPS LASSIE 746
SILVEIRAS EL CAPITAN 6510
B S F PRINCESS TCF N2
EXLR POLLED BENCHMARK709G
WULFS GLENDA 7021G
COLE FIRST DOWN 46D
MISS WOLFETTE 9049X

	CED	BW	WW	YW	MK	CEM	SC	DOC	YG	CW	RE	MB	\$MTI
EPDS	3	3.9	70	105	24	3	0.8	11	-.38	44	.92	.18	61
%RANK	>95	>95	30	40	30	95	75	65	40	5	20	20	15

Due 11/19/19 to AUTO King David 120E (HetP/HB)

- AUTO Epic 466E is an own daughter of the breed legend, MAGS Manuela, and out of the Angus sire, BSF Opportunist. She was a bit shy picture day and didn't really cooperate, but study her video and you realize this female puts it together in an appealing package backed with substance and a nice EPD profile.
- Her calf by AUTO King David 120E, the homozygous black son of AUTO King James out of the famed PBRS Dutches 790X donor, should be epic. King David was the 2018 AALF Grand Champion and 2019 NWSS Reserve Grand Champion Bull.
- Ranks in the top 30% or better for WW, MK, CW, RE, MB & \$MTI

15

AUTO APPLE CIDER 444E ET

LIM-FLEX(75/66.4) • HOMO POLLED (T) • RED • 9/27/2017 • AUTO 444E • LFF2146208



ACT BW • 64
ADJ WW • 610
ADJ YW • 765
ADJ FAT • .04
ADJ REA • 8.74
ADJ IMF • 3.19

WZRK PRIMESTAR 861P
WZRK PRIME CUT 8012Y
WZRK MISS NASCAR 8012U

LJC MISSION STATEMENT P27
MAGS ANGEL 9748W
MAGS PARKER

JCL LODESTAR 27L
WZRK MISS P ULTRA 861F
WULFS NASCAR G949N
WZRK MISS F LINER 1021L
LJC LANCER 806
LJC HANNAH 106
LVLS POLLED BLACK JACK
CANE RIDGE POLL ANGEL 318

	CED	BW	WW	YW	MK	CEM	SC	DOC	YG	CW	RE	MB	\$MTI
EPDS	7	3.6	70	114	24	3	0.8	11	-.57	30	1.01	-.12	52
%RANK	95	>95	30	20	30	95	65	65	4	35	10	80	65

Due 12/4/19 to AUTO King David 120E (HetP/HB)

- Homozygous Polled
- AUTO Apple Cider 444E is a tremendous red, 75% Lim-Flex daughter of WZRK Prime Cut out of MAGS Angel 9748W who is sired by the powerhouse Red Angus bull, LJC Mission Statement. This eye-appealing female packs lots of style into a functional package with balanced EPDs.
- She is carrying a calf by AUTO King David 120E, the homozygous black son of AUTO King James out of the famed PBRS Dutches 790X donor owned by Jones Brothers. King David was the 2018 AALF Grand Champion and 2019 NWSS Reserve Grand Champion Bull.
- Ranks in the top 30% or better for WW, YW, MK, YG & RE

16

AUTO ESSANCE 474E ET

LIM-FLEX(50/43) • HOMO POLLED (T) • HOMO BLACK (T) • 11/16/2017 • AUTO 474E • LFF2139877



ACT BW • 64
ADJ WW • 869
ADJ YW • 1,052
ADJ FAT • .22
ADJ REA • 10.39
ADJ IMF • 3.68

HA OUTSIDE 3008
HA COYBOY UP 5405
HA BLACKCAP LADY 1602

WLR DIRECT HIT
AUTO LUCKIE TOO 423Y
TYEJ DB SERENITY

KG SOLUTION 0018
HA EVER LADY 1575
HA PROGRAM 7328
HA BLCKCAP LADY 5515
KRVN NASKAR 013N
MAGS NIGHT AMBUSH
LESF ASPHALT 9N
TYEJ DB SIZZLE

	CED	BW	WW	YW	MK	CEM	SC	DOC	YG	CW	RE	MB	\$MTI
EPDS	11	2.3	73	116	18	3	1.2	9	-.24	34	.65	-.05	52
%RANK	50	90	20	15	90	95	20	85	80	20	70	65	60

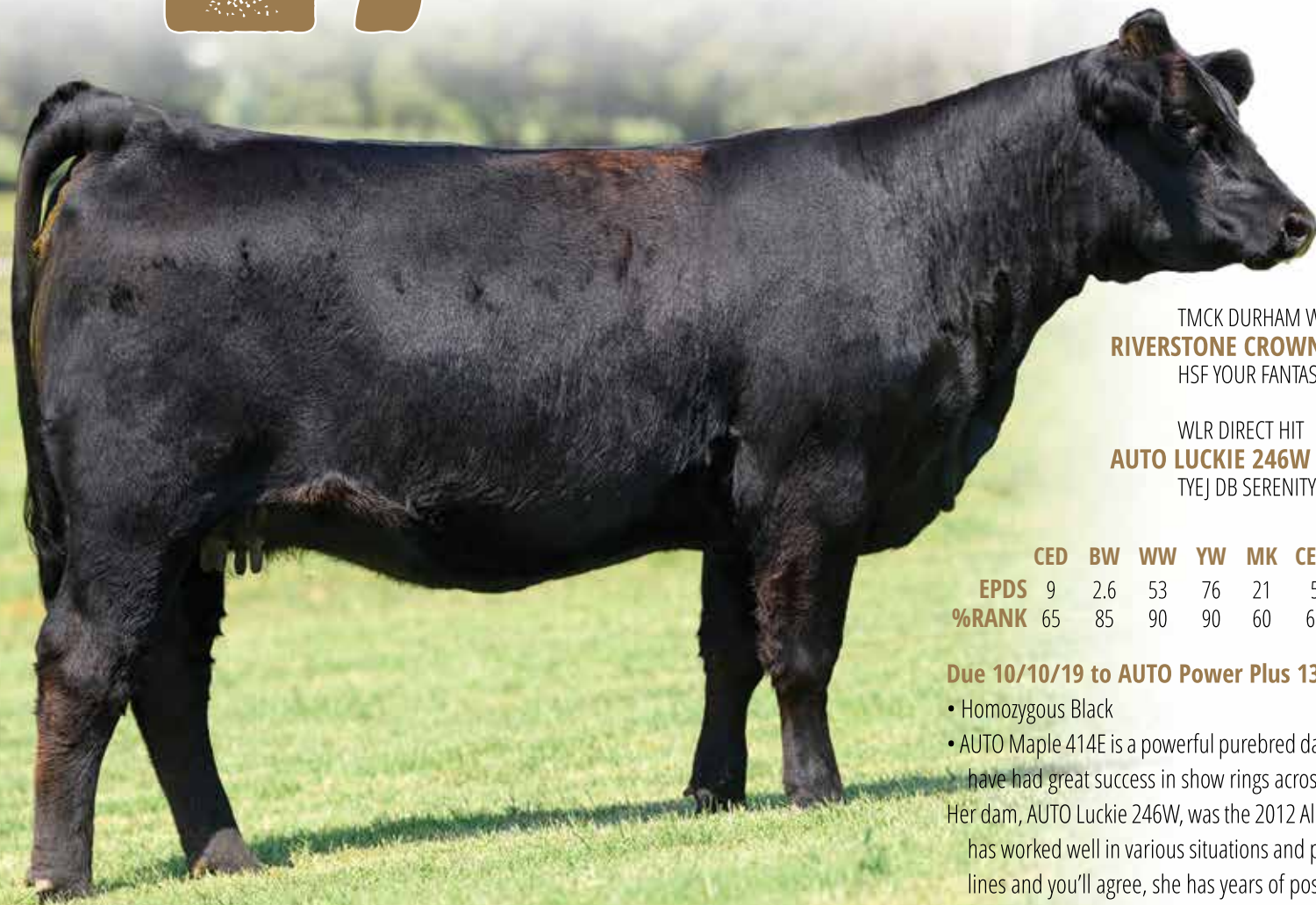
Due 12/5/19 to AUTO King David 120E (HetP/HB)

- Homozygous Polled & Homozygous Black
- AUTO Essance 474E is a daughter of the Express herd sire HA Cowboy Up who commanded \$350,000 at auction. He has worked well on our Limousin females, siring the cowboy's kind of cattle with functionality and practicality. Her dam was a many-time champion in her own right who has done an outstanding job in the donor pen producing champions that perform in the pasture.
- She is carrying a calf by AUTO King David 120E, the homozygous black son of AUTO King James out of the famed PBRS Dutches 790X donor. King David was the 2018 AALF Grand Champion and 2019 NWSS Reserve Grand Champion Bull.
- Ranks in the top 20% or better for WW, YW, SC & CW

17

AUTO MAPLE 414E ET

PUREBRED(100/87.9) • HET POLLED (T) • HOMO BLACK (T) • 9/6/2017 • AUTO 414E • NPF2146221



ACT BW • 64
ADJ WW • 588
ADJ YW • 776
ADJ FAT • .19
ADJ REA • 10.65
ADJ IMF • 3.62

TMCK DURHAM WHEAT 6030X
RIVERSTONE CROWN ROYAL
HSF YOUR FANTASY

WLR DIRECT HIT
AUTO LUCKIE 246W
TYEJ DB SERENITY

DHVO DEUCE 132R
MAGS STRAWBERRY PIE
MAGS WAR ADMIRAL
HSF TINKERBELL
KRVN NASKAR 013N
MAGS NIGHT AMBUSH
LESF ASPHALT 9N
TYEJ DB SIZZLE

	CED	BW	WW	YW	MK	CEM	SC	DOC	YG	CW	RE	MB	\$MTI
EPDS	9	2.6	53	76	21	5	0.9	10	-.61	-.2	.78	-.55	31
%RANK	65	85	90	90	60	65	15	70	85	>95	>95	90	>95

Due 10/10/19 to AUTO Power Plus 133B (HP/HB)

- Homozygous Black
- AUTO Maple 414E is a powerful purebred daughter of Riverstone Crown Royal whose progeny have had great success in show rings across the United States. Her dam, AUTO Luckie 246W, was the 2012 All-American Futurity Grand Champion female, and has worked well in various situations and proves herself yet again in AUTO Maple. Study her lines and you'll agree, she has years of positive production ahead of her.
- She is carrying a calf by AUTO Power Plus 133B, the double homozygous a son of the popular Angus sire EXAR Denver 2002B out of EF Yadda Yadda, who is a herd sire in the Stowers Limousin herd in Texas.
- Ranks in the top 15% for SC

18

AUTO RALLY GIRL 486E ET

PUREBRED(100/90.4) • HET POLLED (T) • HET BLACK (T) • 11/13/2017 • AUTO 486E • NPF2146215



ACT BW • 70
ADJ WW • 650
ADJ YW • 752
ADJ FAT • .07
ADJ REA • 9.37
ADJ IMF • 2.75

LVLS SECRET WEAPON 4408K
AUTO DOLLAR GENERAL 122R
AUTO KYRIA 232K

LESF ASPHALT 9N
EXLR LUVLY 080T
EXLR LUVLY 084F

LVLS FARMER 4G
LVLS 408H
AUTO HACKETT 702H
WULFS HAPPINESS 8136H
GPFF BLAQUE RULON
GPFF EXTRA SWEET ELITE
WULFS DAWSON 4421D
AMBL LUVLY 340Y

	CED	BW	WW	YW	MK	CEM	SC	DOC	YG	CW	RE	MB	\$MTI
EPDS	11	2.0	67	100	29	8	0.3	9	-.59	24	.92	-.38	41
%RANK	45	70	30	35	3	20	85	75	90	15	90	40	45

Due 12/4/19 to CELL Envision 7023E (HP/HB)

- If you like females with that Limousin look, then stop here. AUTO Rally Girl 486E is a purebred with a storied pedigree. Her sire, AUTO Dollar General, has left a productive set of daughter across America that have lots of power and impressive EPD profiles. Her dam, EXLR Luvly 080T, is a daughter of one of the most prolific cows in the business, Luvly 084F, who raised countless show champions, herd sires and donors. It doesn't get more legendary than this. Then, when you factor in Rally Girl's EPD profile it becomes a no-brainer that she is a must-have female.
- She is carrying a calf by CELL Envision 7023E, the deceased, double homozygous purebred son of AHCC Barn Burner out of PBRS Zsa Zsa.
- Ranks in the Top 30% or better for WW, MK, CM & CW

19

AUTO ENANDO 690E

LIM-FLEX(68/62.2) • HOMO POLLED (T) • HOMO BLACK (T) • 10/5/2017 • AUTO 690E • LFF2146083



ACT BW • 74
ADJ WW • 612
ADJ YW • 847
ADJ FAT • .07
ADJ REA • 8.91
ADJ IMF • 3.51

CONNELY LEAD ON
AUTO LEAD ON 107A
MAGS MANUELA

WLR DIRECT HIT
AUTO CLEO 278C ET
MAGS SALMETTO

CONNELY LEADTIME
ELIGENCE PLUS OF CONANGA
EXLR LIMITED EDITION 765J
AUTO CITY NIGHTS 214H
KRVN NASKAR 013N
MAGS NIGHT AMBUSH
TNUH BLUE PRINT 245H
MAGS PALMETTO

	CED	BW	WW	YW	MK	CEM	SC	DOC	YG	CW	RE	MB	\$MTI
EPDS	7	3.8	67	102	26	5	1.1	8	-.51	20	.94	-.15	49
%RANK	95	>95	40	50	15	80	30	95	15	70	20	85	80

Due 12/4/19 to AUTO King David 120E (HetP/HB)

- Homozygous Polled & Homozygous Black
- AUTO Enando 690E is an appealing 68% Lim-Flex with functionality built-in and a sound pedigree designed for production. On the top side of her pedigree you have the Angus great Connealy Lead On paired with MAGS Manuela On the bottom, there's the Direct Hit sire mated to MAGS Salmetto. Make the right choice and be the one who owns this female when the final gavel drops.
- She is carrying a calf by AUTO King David 120E, the homozygous black son of AUTO King James out of the famed PBRs Dutches 790X donor owned by Jones Brothers. King David was the 2018 AALF Grand Champion and 2019 NWSS Reserve Grand Champion Bull.
- Ranks in the top 20% or better for MK, YG & RE

20

AUTO ENID 685E

LIM-FLEX(59/52.9) • HET POLLED (T) • HOMO BLACK (T) • 9/21/2017 • AUTO 685E • LFF2147737



ACT BW • 74
ADJ WW • 673
ADJ YW • 810
ADJ FAT • .08
ADJ REA • 7.59
ADJ IMF • 3.42

CONNELY LEAD ON
AUTO LEAD ON 107A
MAGS MANUELA

MAGS ANCHOR
AUTO COTTON CANDY 223C ET
AUTO REBECA 292S

CONNELY LEADTIME
ELIGENCE PLUS OF CONANGA
EXLR LIMITED EDITION 765J
AUTO CITY NIGHTS 214H
LH WAR HERO 195W
MGS XIPHOPAGOUS
LESF ASPHALT 9N
EXLR REBECA 1019P

	CED	BW	WW	YW	MK	CEM	SC	DOC	YG	CW	RE	MB	\$MTI
EPDS	8	3.2	72	106	23	5	1.1	11	-.37	25	.75	.00	55
%RANK	90	>95	20	40	45	80	40	65	40	50	55	55	45

Due 12/4/19 to AUTO Power Plus 133B (HP/HB)

- Homozygous Black
- AUTO Enid 685E is a paternal sister to Lot 19. Her dam, AUTO Cotton Candy, is a MAGS Anchor daughter out of the incomparable AUTO Rebeca 292S. AUTO Enid has a sweeping rib cage with a big hip and the right amount of stoutness. She's developing a nice udder and will make a nice addition for her new buyer. Females like this are what keep you in business.
- She is carrying a calf by AUTO Power Plus 133B, the double homozygous son of the popular Angus sire EXAR Denver 2002B out of EF Yadda Yadda, who is a herd sire in the Stowers Limousin herd in Texas.