



# Vegas ALL BREED SALE

**SATURDAY, DECEMBER 7, 2019**

**3:00 P.M. P.S.T. BELLAGIO HOTEL & CASINO LAS VEGAS, NEVADA**

**SATURDAY, DECEMBER 7, 2019**  
BELLAGIO HOTEL & CASINO | LILY BAR & LOUNGE | LAS VEGAS, NEVADA

# Vegas ALL BREED SALE



**SCHEDULE ...**

2:00 p.m. P.S.T. Social Hour  
3:00 p.m. P.S.T. **Vegas All Breed Sale**  
National Finals Rodeo to follow

**SALE LOCATION ... LILY BAR & LOUNGE**  
Bellagio Hotel & Casino, Las Vegas, NV

**AUCTIONEER ... Eddie Burks, 270.991.6398**  
(TN Auctioneers License #4990)

**RING STAFF/ LIVESTOCK REPRESENTATIVES ...**  
DeRon Heldermon .....405.850.5102  
Scott Manley .....417.860.5250

**SALE DAY PHONES ...**

Randy Ratliff .....AllBreeds365 .....615.330.2735  
Kiley McKinna .....AllBreeds365 .....402.350.3447  
P.J. Budler.....AllBreeds365 .....682.597.0380

**SALE ORDER & SUPPLEMENTAL INFORMATION ...**  
Sale order is catalog order! Any additional information  
or corrections to the printed sale catalog will be available  
online at [www.allbreeds365.com](http://www.allbreeds365.com)

**AIR TRANSPORTATION ...**  
Las Vegas, Nevada Airport (LAS)

Visit [AllBreeds365.com](http://AllBreeds365.com) to view the sale book and videos of live lots on December 5th!  
More information can be found on pages 4 and 5.

## GENERAL SALE TERMS

**TERMS AND CONDITIONS ...** Cattle will sell under the standard terms and conditions. All consignors in the Allbreeds365 sale sell their lots 100% fully guaranteed. Any announcements from the sale podium will take precedence over the printed sale catalog.

**EMBRYO GUARANTEE ...** All embryo lots will have statements regarding each with their descriptions as to how they are selling.

**DESCRIPTIONS AND FOOTNOTES ...** Each consignor wrote the descriptions that pertained to their lot or lots. Allbreeds365 does not take any responsibility, in regards, to the guarantee of what was written. Any adjustments or corrections will be made at the time of the sale.

**REGISTRATIONS, TRANSFERS AND EMBRYO TRANSFERS ...** Within 60 days of the date of the sale, the cattle sold will be transferred (registrations) to the new owners through the offices of each Breed Association. The fee is paid for by the seller.

**PAYMENT ...** All lots must be paid for immediately following the conclusion of the Allbreeds365 Sale unless prior payment arrangements have been made with any representative of Allbreeds365. Buyers are welcome to pay by credit card. If so, you will be charged a 3% fee on the total sum of your purchase.

**DELIVERY ...** Buyers are responsible for any shipping cost pertaining to embryo purchases and transportation of the live cattle. Allbreeds365 buyers and sellers will work together to make this the easiest and most efficient process possible.

**LIVESTOCK MORTALITY INSURANCE ...** Any representative of the Allbreeds365 team can assist any buyer with insurance regarding their purchases.

**HEALTH PAPERS ...** All live cattle sold will be accompanied with an appropriate health paper for immediate shipment. Additional health testing may be required from some locations.

**GENETIC CONDITIONS ...** Log onto any Breed Association and go to the animal search and results of the genetic testing will be found on the lot selling.

**LIABILITY ...** All persons attending the sale, do so at their own risk, legal or otherwise for their safety. The consignors, sale management, and sales staff assume no responsibility or liability for property loss or any accidents that may occur.

Auction money and proceeds will be conducted under Randall O. Ratliff dba R & R Marketing, P.O. Box 60097, Nashville, TN 37206. Bond # 7901027402 (U.S. Department of Agriculture, Grain Inspection, Packers and Stockyards Administration Packers and Stockyards Program



## Bellagio Hotel & Casino Las Vegas, NV



365  
ALLBREEDS365.COM

# MEET THE ALLBREEDS 365 TEAM

Dear Cattleman and Cattlewoman,

It is with much pleasure that all of us team members at AB365 welcome you to our Inaugural AllBreeds365 sale in Las Vegas. As you take a minute to view this sale offering you will find the very finest of several breeds of cattle in the U.S and Canada. We applaud the consignors for the superb job in creating such an amazing product and then their willingness to offer those genetics with AB365 in Vegas. This sale was designed for it to be a platform for any consignor to showcase their genetics at most professional and "business like" manner.

This sale will be held in the Lily Lounge in the beautiful Bellagio Hotel and Casino. The preferred staff at the Bellagio are long-time friends of mine and have be gracious enough to let us be able to hold this sale in the gorgeous space. We welcome anyone from around the world to view/bid/buy in the sale with us by logging onto [www.allbreeds365.com](http://www.allbreeds365.com).

We would like to make a special thank you to our platinum level sponsors of this event. We have John and Dede Sullivan and family, Sullivan Farms from Dunlap, IA. They are highlighting their very best cattle with us in the event and sure appreciate their level of sponsorship and involvement in this sale. A true highlight of the sale is the recent 2019 NAILE Supreme Junior heifer over all breeds. She is lot 1 where we are offering 50% embryo interest.

We also want to thank Larry Coleman and his family, Coleman Angus from Charlo, MT as they are one of the lead sponsors of this event as well. They have proven to be one of the leading Angus seedstock operations in all of the country. They are gracious enough to highlight this sale with their selling of 50% interest of Coleman Donna 504. She is one of their very best they have ever offered for sale ad that says a lot. Also selling are 2 heifer pregnancies and pick of two heifer calves. Our other platinum level sponsor is Notta Speckle Parks, Jason and Sara Goodfellow of Neilburg, Sask, Canada. They just happen to be one of the leaders in the Speckle Park breed of cattle and have been more than willing to be a platinum sponsor and highlight only their finest in this sale.

We are very excited for you to take time out of your busy schedule and attend the sale or view the sale online. If we can be of any assistance, then please done hesitate to call.

Best Regards,  
Randall O. Ratliff, AllBreeds365 team member



**RANDALL O. RATLIFF**  
SALES REPRESENTATIVE  
615.330.2735 | [Randy@rrmktg.com](mailto:Randy@rrmktg.com)



**KILEY MCKINNA**  
SALES REPRESENTATIVE  
402.350.3447 | [MCmarketingsales@aol.com](mailto:MCmarketingsales@aol.com)



**ABBY LANE**  
OFFICE MANAGEMENT  
919.618.8098 | [Abby@rrmktg.com](mailto:Abby@rrmktg.com)



**P.J. BUDLER**  
INTERNATIONAL AFFAIRS  
682.597.0380 | [PJBudler@gmail.com](mailto:PJBudler@gmail.com)



@allbreeds365

## CONNECT WITH US

To learn more about AllBreeds365 events, sale updates and more, visit [AllBreeds365.com](http://AllBreeds365.com).

WATCH & BID LIVE AT



## CONVENIENCE BUYING

AllBreeds365.com want to make your buying experience easy and convenient!

### 1. VISIT US

You can't beat the experience of seeing your potential new investments in person! We are looking forward to this day of opportunity to view the sale cattle, see old friends, connect with new friends and answer any questions you have about your interests before sale day. We hope you can make it out to Las Vegas for the full sale experience, but if you can't make it, we've got you covered with quality options to purchase cattle with convenience!

### 2. CALL US IN ADVANCE

With all the quick-messaging technology at our disposal, sometimes picking up the phone is the easiest way to get the information you need! We are happy to have a conversation and walk you through any questions or information you need for sale day to make the best buying decisions for your program. Any member of our team would be happy to talk with you and connect you to the right people and information you need to feel fully informed for sale day. Contact any member of AllBreeds365.

### 3. BID ONLINE

If you are unable to make it to Las Vegas for the sale, join us online for REAL TIME, LIVE online bidding for the Vegas All Breed Sale. All lots in the sale will be available for viewing prior to sale day and bidding on sale day at [www.allbreeds365.com](http://www.allbreeds365.com).

### 4. VALUE PURCHASING

No matter what your needs are, this offering is sure to add value to an already thriving program and enhance the future of your herd. From commercial options to some of the highest quality genetic influences of the breed — this will be the sale for you.



Alex Kimmerling  
 Alex, 402.239.0863  
 109 W 7th St. Apt. 3, York, Nebraska 68467  
 akshowcattle@gmail.com



Mark Haden & Logan Haden  
 Mark, 417.838.6109  
 Logan, 417.689.4233  
 5244 S Farm Rd 213, Rogersville, MO 65742  
 www.buckridgescattle.com



Kevin Blair, 306.365.7922  
 Blake MacMillan, 306.528.7484  
 Kent McCune, 817.602.8629  
 PO Box 61, Lanigan, Saskatchewan SOK 2M0  
 kevin@blairs.ag | blairscattleco.com



Cody Burke  
 Cody, 402.649.9735  
 42401 GG Road, Genoa, Nebraska 68640  
 burkec19@gmail.com



Baxter Blair  
 Kevin Blair 306.365.7922  
 PO Box 61 • Lanigan, Saskatchewan SOK 2M0  
 kevin@blairs.ag | blairscattleco.com



Larry & Dee Coleman  
 Home - 406.644.2697  
 Cell - 406.240.2751  
 40067 Morris Road, Charlo, Montana 59824  
 colemanangus@blackfoot.net  
 www.colemanangus.com



Berlowitz Cattle  
 Jason, 918.225.8739  
 Braelyn, 918.306.2838  
 Berlowitzcattle@yahoo.com



Edge Livestock  
 Patti, Katie & Brady Edge  
 776 270th Street, West Branch, Iowa 52358  
 Brady, 319.540.1730 | edgebred@gmail.com  
 Patti, 319.540.1730 | pattiedge@gmail.com

*Consignors*

—ECS—  
Elmore Cattle Services

Jason, 580.554.1278  
Jennie, 580.231.1276  
7924 S 54th St., Waukomis, OK 73773  
Elmorecattleservices@gmail.com



Ryan Johnson & Samantha Messmer  
Ryan, 605.999.5576  
25924 407th Ave., Mitchell, SD 57301  
rjcattleco.com



Forgy Cattle Company  
Chad, 214.395.5020  
Chadd.forgy@outlook.com



Jason & Sara Goodfellow  
Jason cell, 780.872.8788  
PO Box 307, Neilburg, Sask S0M 2C0 Canada  
nottaspeckleparks@hotmail.com  
www.nottaranch.com



Highland Angus Scotland  
William McLaren, cell: +44 7740 786112  
mclaren672@aol.com | office: +44 1786 823767  
Burnside of Balhaldie | Dunblane  
FK 15 0NB, Scotland

Matt, 417.830.8180  
13302 West State Hwy 266  
Bois D Arc, MO 65612  
Mattowen83085@yahoo.com  
www.owenbroscattleco.com

**LINHART  
LIMOUSIN**

Charles & Heather Linhart  
641.340.1306  
27195 175th St., Leon, IA 50144  
charles@linhartlimousin.com



**MOGCK**  
cattle  
Justin Mogck 605.929.4021

Justin, 605.929.4021  
1100 North Main, Tripp, SD 57376  
www.mogckangusfarms.com



John & Dede Sullivan  
Sarah & Sage | James | Nick  
Josh Elder, 402.650.1380  
John Elder, 402.650.1385  
701 Iowa Ave, Dunlap, IA 51529  
www.MaternalLegends.com

Vegas ALL  
BREED  
SALE

GENETICS FROM THE BREED B

# Sullivan Farms



John & Dede Sullivan | Sarah & Sage | James | Nick  
Josh Elder, 402.650.1380 | John Elder, 402.650.1385  
701 Iowa Ave, Dunlap, IA 51529  
[www.Maternallegends.com](http://www.Maternallegends.com)





EST ...



LOTS 1 - 3

# ***SIMMENTAL & SIMANGUS GENETICS***



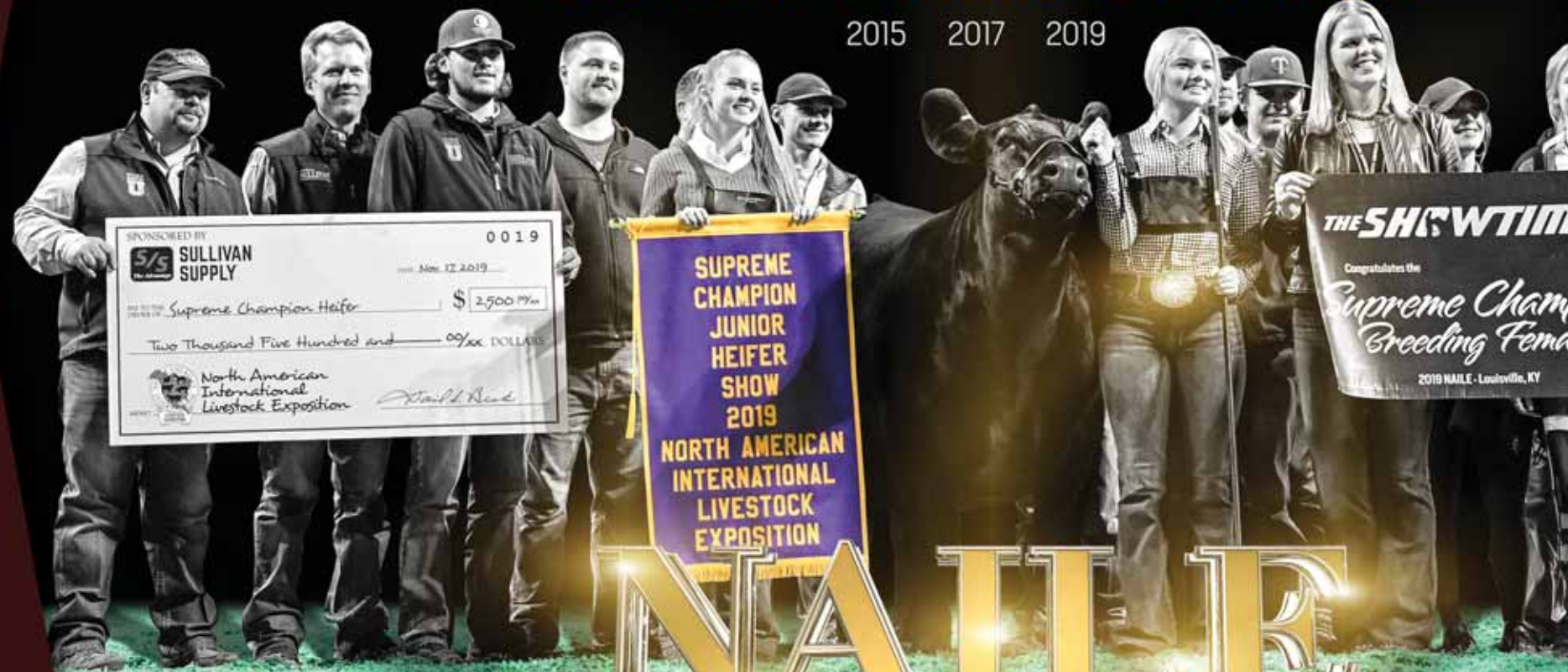


**THE SHOWTIMES**

# Sara Sullivan

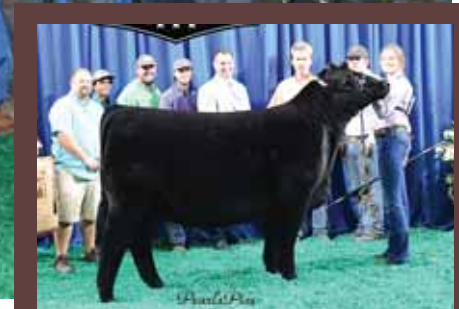
**SUPREME CHAMPION HEIFER**

2015 2017 2019



# NAILE

LOUISVILLE



2019 Sweepstakes Grand Champion  
SimAngus Heifer

## 1 **RJ RF RITA 8288F**

ASA# 3482861 | BLACK | POLLED | 01.27.18 | 50% SIM / 50% ANGUS | FEMALE

W/C LOADED UP 1119Y  
W/C BANKROLL 811D  
MISS WERNING KP 8543U

PVF INSIGHT 0129  
EXAR RITA 5406  
EXAR RITA 0510

REMINGTON LOCK N LOAD54U  
AUBREYS BLACK BLAZE III  
WAGR DREAM CATCHER 03R  
MISS WERNING 534R  
S A V BRILLIANCE 8077  
PVF MISSIE 790  
EXAR TITELIST T011  
EXAR MISS PRECISION 82027

CED	BW	WW	YW	ADG	MILK	MWW	CW	YG	MARB	BF	REA	API	TI
+11.7	1.1	74.8	113.5	0.24	22.4	59.7	50	-0.22	0.33	-0.029	0.98	131.2	77.1

**Consigned by Sullivan Farms, Dunlap, IA**

Selling 50% embryo interest. Sullivan Farms to retain possession.

Safe bred to Eathington Sub-Zero (Angus). Due 3.03.20

RJ PF Rita 8288F has been the most talked about show heifers on the 2019 show circuit. She lived up to the chatter this fall and summer as she was selected the 2019 NAILE Supreme Champion Female overall breeds, was also selected as the Supreme Champion Female at the Iowa State Fair as well as the Grand Champion % Simmental at the 2019 National Junior Heifer Show. Lot 1 was also selected as Grand Champion Percentage Simmental Female in the Open and Junior Show at the American Royal This powerful female is truly unique when you combine her added substance and muscle shape, with structural correctness and yet she maintains that smooth maternal show ring design.

Sullivan Farms is offering this rare opportunity for you to purchase half-interest in this many-time champion and a female that will be a breeding piece to help propel the Simmental breed into to new heights.



2

## SVJ SHE'S THE DREAM B796

ASA# 2881842 | RED | POLLED | 03.26.14 | PB SIMMENTAL | FEMALE

CNS DREAM ON L186  
SVF STEEL FORCE S701  
SVF SHEZA BEAUTY L901

SVJ WILD FIRES DREAM  
SVJ SHE'S THE DREAM Y728  
SVJ SHES THE ONE U728

NICHOLS LEGACY G151  
CNS SHEEZA DREAM K107W  
PVF-BF BF26 BLACK JOKER  
SVF SHEZA LADY J900  
CNS DREAM ON L186  
DSC WILD FIRE  
REMINGTON RED LABEL HR  
SVJ STYLISH ONE

CED	BW	WW	YW	ADG	MILK	MWW	CW	YG	MARB	BF	REA	API	TI
10.3	1.4	58.9	83.2	0.15	18.6	48.0	31.5	-0.45	-0.10	-0.104	0.87	103.0	60.7

**Consigned by Sullivan Farms, Dunlap, IA**

Selling 50% embryo interest with Sullivan Farms maintaining possession or the option to double down for 100% ownership.

Safe bred to SULL Brilliance 9515 (PB Angus). Due 1.02.20

SVJ She's the Dream B796 has become one of the most valuable donors for Sullivan Farms in their Simmental Program. She herself was a calf champion at the NAILE and has produced multiple champion at Sullivan Farms. Her Silveiras Style daughter, JSUL Dream Big 8992F was Calf Champion at the 2018 NAILE, Grand Champion Percentage Female in the Junior Show at the 2019 NWSS and was Reserve Grand Champion Female at the 2019 FWSS Open Show, and most recently was selected as the 2019 NAILE Grand Champion Female in Open Percentage Simmental show.

Sara Sullivan will be showing another daughter of SVJ She's the Dream B796 in 2020 sired the Denver Champion Angus Bull, SCC Tradition of 24. Year after year this great female produces elite show females and future donors.

SVJ She's the Dream B796 has been a consistent egg producer averaging five freezable or transferable embryos on 35 cycles.



JSUL Dream Big 8992F, the 2019 NAILE Grand Champion % Simmental Female, and a full sister to Lot 3.



SVJ She's the Dream B796, dam of Lot 3 and selling as Lot 2.

3

## JSUL BIG DREAMS 9249G

ASA# 3640361 | BLACK | POLLED | 03.10.19 | 50% SIM & 50% ANGUS | FEMALE

GAMBLES HOT ROD	FAMOUS 7001
SILVEIRAS STYLE 9303	CHAMPION HILL LADY 703
SILVEIRAS ELBA 2520	TWIN VALLEY PRECISION E161
	D A R ELBA 55
SVF STEEL FORCE S701	CNS DREAM ON L186
SVJ SHE'S THE DREAM B796	SVF SHEZA BEAUTY L901
SVJ SHE'S THE DREAM Y728	SVJ WILD FIRES DREAM
	SVJ SHES THE ONE U728

CED	BW	WW	YW	ADG	MILK	MWW	CW	YG	MARB	BF	REA	API	TI
11.2	0.8	56.4	83.0	0.17	17.2	45.4	16.8	-0.15	0.26	-0.29	0.36	112.0	62.5

Consigned by Sullivan Farms, Dunlap, IA

Selling open. Sara Sullivan will show free of charge if buyer so chooses to.

Another daughter of SVJ She's the Dream B796 and full sister to; JSUL Dream Big 8992F the 2019 NAILE Grand Champion Percentage Simmental as Reserve at the 2019 FWSS Open Show and grand champion at the 2019 NWSS Junior show.

JSUL Big Dreams 9249G has been a standout since this summer and has a very bright future ahead of her that is sure to see some backdrop pics. She combines the eye appeal and body mass desired for today's show ring. With her proven pedigree and success of her full sisters u can be confident of what's to come in the future from the young female.

Consigned by Sullivan Farms, Dunlap, IA

LOTS 4 - 9

# **ANGUS GENETICS**







THE  
**POWER**  
IS IN THE **BLOOD!**



**4**

# COLEMAN DONNA 504

AAA# +\*18238090 | BLACK | POLLED | 01.15.15 | PB ANGUS | FEMALE

RITO 707 OF IDEAL 3407 7075  
S A V RESOURCE 1441  
S A V BLACKCAP MAY 4136CONNEALY ONWARD  
COLEMAN DONNA 714  
COLEMAN DONNA 386R R RITO 707  
IDEAL 3407 OF 1418 076  
S A V 8180 TRAVELER 004  
S A V MAY 2397  
CONNEALY LEAD ON  
ALTUNE OF CONANGA 6104  
BASIN RAINMAKER 654X  
KMK DONNA J311

CED	BW	WW	YW	ADG	SC	CEM	MILK	MW	CW	MARB	RE	FAT
13	0.7	73	140	0.27	0.99	11	27	76	64	0.04	0.91	0.008

SM	\$W	\$F	\$G	\$B
74	78	93	29	122

**Consigned by Coleman Angus Ranch,  
Charlo Montana**

Selling 1/2 Interest, no possession with option to double and take all in the donor herself.

Bred to Coleman Navigator 614. Due 01.25.20

It's with great anticipation and excitement to have this lot highlighting the Angus portion of this elite sale with one of the most prolific, proven and profitable cow families in the history of the breed! It's hard to know where to start when describing the "Donna" cow family's lasting impact upon the Angus breed and scores of breeding programs across North America. That said, on offer for your appreciated appraisal is three exceptional lots of rarity! First, half embryo interest with option to double, in the donor herself, Coleman Donna 504, two masterfully created open heifer's by "504" and two heifer pregnancies out of "504" and by none other than Coleman Charlo 0256, the paternal grandsire of SAV America 8018, the \$1,887,500 world record bull. Folks, these lots not only epitomize genetic predictability but, the stature and prowess of the Coleman Angus program! The "504" cow is simply a breeding masterpiece - she has been a standout since birth and is the youngest direct daughter of "714" ever flushed in the storied Coleman Angus program. To quote Larry Coleman direct, "point blank, we feel 504 has as much potential as any female we have ever raised." The profoundness within that statement is worthy of considering, this is a direct daughter of the legendary "Donna 714" cow that has single handily been responsible for generating north of \$3,000,000 in progeny to date, which includes the \$900,000 valued Montana record setting bull Coleman Bravo 6313 that is a three-quarter's sibling to the heifer pregnancies on hand. The bottom-line is, the opportunity to invest in a cow family that's help set the Angus breed's standard only comes along once in a generation, so make December 7, 2019 your day to make history!

For further detail about these respective lots please contact Larry Coleman direct at 406.240.2751 or any trusted member of the sale team.

Coleman Donna 714,  
dam of 504Coleman Bravo,  
maternal sibling to 504Coleman Charlo 0256,  
sire of PregnanciesSAV America 8018,  
Charlo sonSAV President 6847,  
Charlo sonS A V Raindance 6848,  
Charlo Son

# SELLING CHOICE



S A V Raidance 6848,  
sire of Lot 5A



S A V President 6847,  
sire of Lot 5B



Coleman  
Charlo 0256,  
sire of Lot 6A  
& 6B embryos

**5A**

## COLEMAN DONNA 986

AAA# +\*19543203 | BLACK | POLLED | 02.05.19 | PB ANGUS | FEMALE

COLEMAN CHARLO 0256	O C C PAXTON 730P
S A V RAINDANCE 6848	BOHI ABIGALE 6014
S A V BLACKCAP MAY 4136	S A V 8180 TRAVELER 004
	S A V MAY 2397
S A V RESOURCE 1441	RITO 707 OF IDEAL 3407 7075
COLEMAN DONNA 504	S A V BLACKCAP MAY 4136
COLEMAN DONNA 714	CONNELLY ONWARD
	COLEMAN DONNA 386

<b>CED</b>	<b>BW</b>	<b>WW</b>	<b>YW</b>	<b>RADG</b>	<b>SC</b>	<b>CEM</b>	<b>MILK</b>	<b>MW</b>	<b>CW</b>	<b>MARB</b>	<b>RE</b>	<b>FAT</b>
8	2.1	84	155	0.31	1.24	7	33	95	79	-0.12	1.25	-0.008

<b>\$M</b>	<b>\$W</b>	<b>\$F</b>	<b>\$G</b>	<b>\$B</b>
73	92	118	27	145

**Consigned by Coleman Angus Ranch,  
Charlo Montana**

**5B**

## COLEMAN DONNA 9150

AAA# +\*1954677 | BLACK | POLLED | 01.29.19 | PB ANGUS | FEMALE

COLEMAN CHARLO 0256	O C C PAXTON 730P
S A V PRESIDENT 6847	BOHI ABIGALE 6014
S A V BLACKCAP MAY 4136	S A V 8180 TRAVELER 004
	S A V MAY 2397
S A V RESOURCE 1441	RITO 707 OF IDEAL 3407 7075
COLEMAN DONNA 504	S A V BLACKCAP MAY 4136
COLEMAN DONNA 714	CONNELLY ONWARD
	COLEMAN DONNA 386

<b>CED</b>	<b>BW</b>	<b>WW</b>	<b>YW</b>	<b>RADG</b>	<b>SC</b>	<b>CEM</b>	<b>MILK</b>	<b>MW</b>	<b>CW</b>	<b>MARB</b>	<b>RE</b>	<b>FAT</b>
14	-0.4	72	130	0.25	0.46	10	22	46	46	-0.01	0.59	0.018

<b>\$M</b>	<b>\$W</b>	<b>\$F</b>	<b>\$G</b>	<b>\$B</b>
80	78	78	21	99

**Consigned by Coleman Angus Ranch,  
Charlo Montana**

## 6A & 6B SEXED HEIFER PREGNANCIES

BOTH DUE 01.06.2020 | LOT 6A RECIP TAG T910 | LOT 6B RECIP T911

O C C PAXTON 730P	O C C FOCUS 813F
COLEMAN CHARLO 0256	O C C BLACKBIRD 736K
BOHI ABIGALE 6014	SITZ TRAVELER 8180
	S A V ABIGALE 6062
S A V RESOURCE 1441	RITO 707 OF IDEAL 3407 7075
COLEMAN DONNA 504	S A V BLACKCAP MAY 4136
COLEMAN DONNA 714	CONNELLY ONWARD
	COLEMAN DONNA 386

**SIRE ...**

<b>CED</b>	<b>BW</b>	<b>WW</b>	<b>YW</b>	<b>MILK</b>	<b>CW</b>	<b>MARB</b>	<b>RE</b>	<b>FAT</b>	<b>\$M</b>	<b>\$W</b>	<b>\$F</b>	<b>\$G</b>	<b>\$B</b>
10	-0.1	51	91	26	20	0.38	0.56	0.06	59	82	51	35	86

**DAM ...**

<b>CED</b>	<b>BW</b>	<b>WW</b>	<b>YW</b>	<b>MILK</b>	<b>CW</b>	<b>MARB</b>	<b>RE</b>	<b>FAT</b>	<b>\$M</b>	<b>\$W</b>	<b>\$F</b>	<b>\$G</b>	<b>\$B</b>
14	-0.4	72	130	22	46	-0.1	0.59	0.018	80	78	78	21	99



Division Champion,  
2019 National Junior Angus Show

7

## HENNING BCII SANDY 8070

AAA# +19256963 | BLACK | POLLED | 05.28.18 | PB ANGUS | FEMALE

DAMERON FIRST CLASS  
EXAR CLASSEN 1422B  
EXAR PRINCESS 2006

SILVEIRAS STYLE 9303  
BCII SANDY 0215  
KNC CABIN CREEK SANDY 905

EXG RS FIRST RATE S903 R3  
DAMERON NORTHERN MISS 3114  
EXAR LUTTON 1831  
GREENS PRINCESS 1012  
GAMBLES HOT ROD  
SILVEIRAS ELBA 2520  
B C LOOKOUT 7024  
K N C CABIN CREEK SANDY

CED	BW	WW	YW	RADG	SC	CEM	MILK	MW	CW	MARB	RE	FAT
-1	4.5	60	96	0.21	-0.16	5	20	62	33	0.58	0.49	0.008

\$M	\$W	\$F	\$G	\$B
26	47	87	49	136

Consigned by Sullivan Farms, Dunlap, IA

Sullivan Farms will retain show rights threw the NWSS and FWSS and two successful flushes.

Safe bred to 3ACES Brilliance 9566 (Angus) Due 5.27.20

An elite Angus female with an elite pedigree. Her dam, BCII Sandy 0215 "Roxi" was the 2017 NWSS Reserve Grand Champion Angus Female for the Henning Family. HENNING BCII Sandy 8070 stems from the KNC Cabin Creek Sandy 905 cow family that has produced numerous of champion and some of the most elite daughter and donors in the Angus breed. HENNING BCII Sandy 8070 is a combination female of eye appeal, body mass, and structural correctness. She herself was a division champion at the 2019 National Junior Heifer show. With her build and genetic makeup she is will make a valuable and versatile breeding piece for anyone's program whether you breed for purebred Angus or go for percentage Simmentals.



## FLUSH

8

## PM ECHO 8'16

CAA# 1911685 | BLACK | POLLED | 01.02.16 | PB ANGUS | FEMALE

S A V BISMARCK 5682  
 BAR-E-L NATURAL LAW 52Y  
 BAR-E-L MAGNOLIA 143K

HG EL TIGRE 28U  
 HF ECHO 111Y  
 HG ECHO 207N

G A R GRID MAKER  
 S A V ABIGALE 0451  
 BAR-E-L MCC 365 ICON 20H  
 DOUBLE FOUR DUCHESS 12G  
 HG KODIAK 5R  
 HF ECHO 84R  
 TC FREEDOM 104  
 DURALTA 14C ECHO 32E

CED	BW	WW	YW	RADG	SC	CEM	MILK	MW	CW	MARB	RE	FAT
-	3.1	46	85	-	1.18	4.0	30	-	34	0.32	-	0.008

**Consigned by Blairs Ag Cattle, Lanigan, Saskatchewan, Canada**

Selling a "right to flush to bull of buyers choice." Buyer pays IVF flush expenditures, guarantee of six embryos and no maximum.

2018 RBC Beef Supreme Champion Female

An exclusive opportunity to acquire elite Angus genetics from the 2018 Agribition RBC Supreme Champion Female, PM Echo 8'16. This ultra impressive Natural Law daughter has been widely admired by even the most discriminating seedstock breeder for her unique combination of structural integrity, base width, depth of rib and muscle shape. To take it one step further, when she was crowned National Champion and Supreme Overall Breeds at her side was an exceptional her heifer calf that went on to be the top selling open female in the Power & Perfection sale. The bottomline is, Echo is not only impeccably designed, she's a proven producer and proven leading foundation female. Make no mistake, December 7th take advantage of this rare opportunity to invest in these Canadian Angus genetics that combine extreme quality and genetic diversity at the highest level.

Terms of the flush will be IVF guaranteeing a minimum of six embryos and three pregnancies. The flush will take place at the Trans Ova-Yackley, Onida, SD, and is to be done soon after the conclusion of the sale.



Millah Murrah Klooney K42, sire



HW Fletcher, son of Fleur M710

9

## THREE EMBRYOS

Selling one package of three Grade 1 embryos.

BOOROOMOOKA THEO T030	B/R NEW DESIGN 036
MILLAH MURRAH KLOONEY K42	BOOROOMOOKA QUAIN T Q34
MILLAH MURRAH PRUE H4	TE MANIA EMPEROR E343
	MILLAH MURRAH PRUE F12
S A V BRAVE 8320	S A V MANDAN 5664
NETHERTON FLEUR M710	S A V MAY 2397
NETHERTON FLEUR K566	NETHERTON BIG EDITION H460
	NETHERTON FLEUR G413

**SIRE ...**

CED	BW	WW	YW	MILK	SC	CW	REA	FAT	IMF
2.6	1.8	47	85	94	1.6	66	5.7	-0.8	0.9

**DAM ...**

CED	BW	WW	YW	MILK	SC	CW	REA	FAT	IMF
1.0	3.0	40	73	86	1.6	-	4.2	4.2	0.0

**Consigned by Highland Angus Scotland,  
Burnside of Balhaldie, Dunblane, Scotland**

Netherton Fleur M710 is one of our stand out donors at HW sired by SAV Brave 8320 the top selling bull at the Schaffs Angus Valley same in 2009. She comes from a strong line of top females which descends from Cee Bar Favourite who is regarded as one of the most influential females in the breed in the UK being a Highland and Royal Show Champion and the only Champion female to breed a Royal Show Champion. She was recognised by the Angus Hall of Fame in the legends book as one of the breeds most influential.

Fleur M710's dam was a class winner at our National Show as a yearling, and her dam was National Cow Champion before selling for £25,000, her grand dam was Highland Show Champion in 2010 when a half share was sold for £10,000 and her great grand dam was the first female in the UK to sell for over £20,000.

With such a strong line of females behind her it no wonder Fleur M710 has been a top breeder for us with a son HW Fletcher T558 selling to Genus ABS and her daughter from 2017 was our high selling female in 2018 selling to Spain (pictured above with dam)

Millah Murrah Klooney K42 is a high performance and marbling bull who sold for \$80,000 at Millah Murrah in 2015. He is the first calf of Prue H4, who many consider to be the best Emperor daughter to surface. Klooney's first crop of sons sold to \$50,000 and averaged over \$20,000. The Millah Murrah herd is one of Australia's best and hold about every record price there is in Australia.

Embryos are stored at Trans-Ova Genetics in Iowa.

LOTS 10A - 10C

# ***PREGNANCIES***





# SELLING CHOICE

## 10A HEIFER PREGNANCY

Selling one purebred Angus Heifer pregnancy due February 29, 2020

## 10B BULL PREGNANCY

Selling one purebred Angus Bull pregnancy due February 29, 2020

BASIN PAYWEIGHT 1682	BASIN PAYWEIGHT 006S
V A R POWER PLAY 7018	21AR O LASS 7017
SANDPOINT BLACKBIRD 8809	CONNEALY ONWARD
	RIVERBEND BLACKBIRD 4301
EXAR UPSHOT 0562B	SITZ UPWARD 307R
EXAR MISS BEAUTY 2819	EXAR BARBARA T020
EXAR MISS BEAUTY 2137	GARDENS PRIME STAR
	EXAR MISS BEAUTY 5116

### PROJECTED EPD'S

BW	WW	YW	MK	CW	MB	RE	\$B
2.1	71	135	27	65	0.81	0.64	171

Consigned by Buck Ridge Cattle Co., Rogersville, MO

## 10C BULL PREGNANCY

Selling a 50% Limflex Bull pregnancy due February 29, 2020 | Homo Polled | Homo Black

BASIN PAYWEIGHT 1682	BASIN PAYWEIGHT 006S
V A R POWER PLAY 7018	21AR O LASS 7017
SANDPOINT BLACKBIRD 8809	CONNEALY ONWARD
	RIVERBEND BLACKBIRD 4301
JCL LODESTAR 27L	JCL LODESTAR 27L
AUTO EXCEPTIONAL 282S	LOGAN'S CHEERLEADER 280G
MINE PLD EXCEPTIONAL 981E	LKCC TOMAHAWKS TOUCHDOWN
	HC EXTRAORDINARY

### PROJECTED EPD'S

BW	WW	YW	MK	CW	MB	RE	\$B
0.1	71	115	25	36	0.66	0.34	65

Consigned by Buck Ridge Cattle Co., Rogersville, MO

Power Play is the 1682 son who does everything we wanted. With over 3,600 1682 sons recorded in the AAA database, Power Play rises to the top. He brings a solid set of numbers to the table—ranking in the top 1% for YW, CW, \$W; top 2% for MW; top 3% for \$F, \$B; top 9% for CED; top 10% for Milk; and top 15% for Doc, Marb, \$G. His phenotype—deep ribbed, big footed, powerful stance—is only enhanced by his herd-changing data. He is backed with a tremendous maternal producer who has amassed over \$3.5 million in progeny sales.

EXAR Miss Beauty, the dam side of these pregnancies, is equally impressive. She had three sons in the 2018 NWSS Grand Champion Carload for Express Ranches and has over \$100,000 in progeny sales at Express. This female produces.



V A R Power Play 7018, sire of Lots 10A, 10B & 10C



EXAR Miss Beauty 2819, dam of Lots 10A & 10B



AUTO Exceptional 282S, dam of Lot 10C

AUTO Exceptional 282S, the matriarch donor at Buck Ridge, has elevated our cowherd and is influential in so many females. She has 99 registered progeny from multiple sire groups, and time after time her progeny rise to the top. Her daughters continue to be the top-producing cows at Buck Ridge and in many other herds. Her daughter, HBRL Bambi 489B, produced the herd sire, HBRL Deluxe Package 6114D, the MAGS Zodiac son working in the Pinegar Limousin and Buck Ridge herds. Her daughter, HBRL American Pie 370A, produced the \$20,000 herd sire, CELL 20/20 working in the Jones Brothers and Linhart programs. She also produced the herd sire, AUTO Lode Up 137B, sired by EXAR Denver 2002B. And when mated to the big-numbered Angus bull, V A R Power Play, it only enriches the value of the bull calf.

LOTS 11 - 14

# **HEREFORD GENETICS**







SULL TCC Diana 4064B, two-time Denver Champion and full sister to Lot 11



SULL Special Diana 919G ET, Lot 11



C Miles Mckee 2103 ET, sire of Lot 11 & 12



TCC Ms Diana 01, dam of Lot 11



## 11 SULL SPECIAL DIANA 919G ET

AHA# 4405834 | 01.24.19 | POLLED HEREFORD | FEMALE

NJW 98S R117 RIBEYE 88X ET	SHF RIB EYE M326 R117
C MILES MCKEE 2103 ET	NJW 9126J DEW DOMINO 98S
C NOTICE ME ET	C -S PURE GOLD 98170
	HH MISS ADVANCE 104A
CRR ABOUT TIME 743	THM DURANGO 4037
TCC MS DIANA 01	CRR D03 CASSIE 206
TCC MISS SHELBY 82 ET	ANKONIAN MIDAS 72
	LCC TWO TIMIN 438 ET

<b>CW</b>	<b>BW</b>	<b>WW</b>	<b>YW</b>	<b>MM</b>	<b>REA</b>	<b>MARB</b>	<b>BMI\$</b>	<b>BIIS</b>	<b>CHBS</b>
-0.8	3.2	49	78	32	0.64	0.06	443	507	118

**Consigned by Sullivan Farms, Dunlap, Iowa**

Selling open. Sara Sullivan will show free of charge if buyer so chooses to.

If your serious about Herefords at the highest level, SULL Special Diana 9191G is possible the best Hereford female ever raised at Sullivan Farms. This female is not only a "Special" show heifer but one that will be incredible future donor that will generate elite progeny. She has all the tools for greatness, perfect structured, unique look and femininity, body shape with added overall power. She is a Hereford female that we feel can run with any breed no matter the color. Her full sister, shown by Trent Ray who sold for \$80,000 through the 2014 Maternal Legends Sale, was a two-time Denver Champion Horned female. Another full sister sold through the 2018 Maternal Legends sale for \$40,000.

Females like SULL Special Diana 9191g don't happen by mistake, she is backed by a proven pedigree with maybe the most successful and popular cow in the breed TCC MS Diana 01. TCC MS Diana 01 was a Denver champion herself and sold to the Beckman family in our dispersal sale for \$150,000. Seller retains the right to two successful future flushes.



## 12 KOLT CARLY'S HARLEY 2858 ET

AHA# 43724222 | 04.03.16 | POLLED HEREFORD | FEMALE

NJW 98S R117 RIBEYE 88X ET SHF RIB EYE M326 R117  
 C MILES MCKEE 2103 ET NJW 9126J DEW DOMINO 98S  
 C -S PURE GOLD 98170 C NOTICE ME ET  
 REMITALL ONLINE 122L HH MISS ADVANCE 104A  
 LCC TWO TIMIN 438 ET REMITALL EMBRACER 8E  
 RST ROF REBA 28H WNH CHR MCA DECATHLETE  
 RST 105A REBA 10E

CW	BW	WW	YW	MM	REA	MARB	BMI\$	BI\$	CHBS
0.9	4.1	51	86	27	0.59	0.09	339	402	116

**Consigned by Sullivan Farms, Dunlap, Iowa**

Selling full interest.

Safe bred to KJ BJ 58Z Contender D56. Due 3.20.20

A proven female with a decorative show career with a pedigree that runs deep of champions at the Highest level. Kolt's Carleys Harley 2858 is one of my all-time favorite Hereford females. She was selected as the 2017 NAILE Junior show champion female as well as the 2018 NWSS Reserve Champion Female in the Jr show. She stems from one of the all-time great females in the breed, LCC Two Timin 438 "Harley" and her sire C Miles Mckee 2103 is the all-time high selling bull in the breed that was a Denver Champion himself.

Females like this don't come along very often, she is the kind that can help improve anyone's program. We can say with confidence that Kolt's Carleys Harley 2858 is just waiting to produce the next sale topper and Denver champion.



LCC Two Timin 438 ET, dam of Lot 12.



KOLT Carly's Harley 2858 ET, dam of Lot 13



ECR Who Maker 210 ET, sire of Lot 13

## 13 FOUR IVF EMBRYOS

Selling one package of four Polled Hereford IVF embryos.

DKF RO CASH FLOW 0245 ET	CRR ABOUT TIME 743
ECR WHO MAKER 210 ET	JRR MISS TOBEY 711T
RV GOLDEN LADY 5064	K&B DOMINO 2570
	RV MS GOLD DUST 3064
C MILES MCKEE 2103 ET	NJW 98S R117 RIBEYE 88X ET
KOLT CARLY'S HARLEY 2858 ET	C-S PURE GOLD 98170
LCC TWO TIMIN 438 ET	REMITALL ONLINE 122L
	RST ROF REBA 28H

SIRE ...	CW	BW	WW	YW	MM	REA	MARB	BMI\$	BIIS	CHBS
	-2.3	3.1	51	76	38	0.78	-0.05	344	398	126
DAM ...	CW	BW	WW	YW	MM	REA	MARB	BMI\$	BIIS	CHBS
	0.9	4.1	51	86	27	0.59	0.09	339	402	116

Consigned by Sullivan Farms, Dunlap, Iowa

KOLT'S Carleys Harley is one of my all-time favorite Miles Mckee/Harley daughters. Her mated with ECR Who Maker is the perfect fit for the power and overall structural correctness of Carley's Harley 2858. We have not seen any progeny from this great mating but I'm very confident that these are going to be great. These embryos recently sold thru the Donors on Ice for \$2,800 per embryo. We can't wait to see some progeny soon from this perfect mating.

# SELLING CHOICE

## 14A FOUR SEXED FEMALE EMBRYOS

Selling one package of FOUR Polled Hereford SEXED FEMALE embryos.

DKF RO CASH FLOW 0245 ET	CRR ABOUT TIME 743
ECR SHAMELESS 7586	JRR MISS TOBEY 711T
RV GOLDEN LADY 5064	K&B DOMINO 2570
C MILES MCKEE 2103 ET	RV MS GOLD DUST 3064
SULL HARLEY'S DRIVE 6153D ET	NJW 98S R117 RIBEYE 88X ET
LCC TWO TIMIN 438 ET	C NOTICE ME ET
	REMITALL ONLINE 122L
	RST ROF REBA 28H

<b>SIRE ...</b>	<b>CW</b>	<b>BW</b>	<b>WW</b>	<b>YW</b>	<b>MM</b>	<b>REA</b>	<b>MARB</b>	<b>BMI\$</b>	<b>BIIS</b>	<b>CHB\$</b>
	-2.3	3.1	51	76	38	0.78	-0.05	344	398	126
<b>DAM ...</b>	<b>CW</b>	<b>BW</b>	<b>WW</b>	<b>YW</b>	<b>MM</b>	<b>REA</b>	<b>MARB</b>	<b>BMI\$</b>	<b>BIIS</b>	<b>CHB\$</b>
	0.9	4.1	51	86	27	0.59	0.09	339	402	116



SULL Harley's Drive 6153D, donor dam of Lot 14.

ECR Shameless 7586, sire of Lot 14A



## 14B FOUR SEXED FEMALE EMBRYOS

Selling one package of FOUR Polled Hereford SEXED FEMALE embryos.

UPS SENSATION 2296 ET	CHURCHILL SENSATION 028X
H MONTGOMERY 7437 ET	UPS JT MISS NEON 7811 1ET
RST GAT NST Y79D LADY 54B ET	WORR OWEN TANKERAY Y79D ET
C MILES MCKEE 2103 ET	H H LADY MAXIUM 111 ET
SULL HARLEY'S DRIVE 6153D ET	NJW 98S R117 RIBEYE 88X ET
LCC TWO TIMIN 438 ET	C NOTICE ME ET
	REMITALL ONLINE 122L
	RST ROF REBA 28H

<b>SIRE ...</b>	<b>CW</b>	<b>BW</b>	<b>WW</b>	<b>YW</b>	<b>MM</b>	<b>REA</b>	<b>MARB</b>	<b>BMI\$</b>	<b>BIIS</b>	<b>CHB\$</b>
	-2.3	3.1	51	76	38	0.78	-0.05	344	398	126
<b>DAM ...</b>	<b>CW</b>	<b>BW</b>	<b>WW</b>	<b>YW</b>	<b>MM</b>	<b>REA</b>	<b>MARB</b>	<b>BMI\$</b>	<b>BIIS</b>	<b>CHB\$</b>
	0.9	4.1	51	86	27	0.59	0.09	339	402	116



C Miles Mckee 6153D, sire of donor, SULL Harley's Drive 6153D



H Montgomery 7437 ET, sire of Lot 14B

## 14C FOUR SEXED FEMALE EMBRYOS

Selling one package of FOUR Polled Hereford SEXED FEMALE embryos.

PYRAMID 16W 110T 9116	FHF M33 STARBUCK 110T ET
H FHF AUTHORITY 6026 ET	FHF 51M ACHIEVA 70T
FHF 408 RITA 21W	CJH HARLAND 408
C MILES MCKEE 2103 ET	FHF 45P RITA 101T
SULL HARLEY'S DRIVE 6153D ET	NJW 98S R117 RIBEYE 88X ET
LCC TWO TIMIN 438 ET	C NOTICE ME ET
	REMITALL ONLINE 122L
	RST ROF REBA 28H

<b>SIRE ...</b>	<b>CW</b>	<b>BW</b>	<b>WW</b>	<b>YW</b>	<b>MM</b>	<b>REA</b>	<b>MARB</b>	<b>BMI\$</b>	<b>BIIS</b>	<b>CHB\$</b>
	-2.3	3.1	51	76	38	0.78	-0.05	344	398	126
<b>DAM ...</b>	<b>CW</b>	<b>BW</b>	<b>WW</b>	<b>YW</b>	<b>MM</b>	<b>REA</b>	<b>MARB</b>	<b>BMI\$</b>	<b>BIIS</b>	<b>CHB\$</b>
	0.9	4.1	51	86	27	0.59	0.09	339	402	116

SULL Harley's Drive 6153D is the result of a very prolific mating in the Hereford breed, she combines the genetics of the \$75,000 LCC Two Timing 438 and the \$600,000 C Miles McKee 2103. Not only were both her parents Supreme champions but full sisters to 6153D have won the Nebraska, Illinois, Missouri, Iowa State Fairs. Sull Harley 4267 was the 2015 NJHE Res Champion heifer and the \$90,000 Kolt Carly's Harley 2858 who won the 2017 NAILE and 2018 Res Champion at NWSS are both full sisters to 6153D. No matter whether you choose the proven mating of ECR Shameless who is a full brother to ECR Who Maker, H Montgomery the \$130,000 reigning American Royal Champion or H Authority the off the open market sire of champions you won't be wrong. All three matings will be the winning slot machine you were in Vegas looking for!



LCC Two Timin 438, maternal granddam of Lot 14



KOLT Carly's Harley 2858, full sister to donor dam SULL Harley's Drive 6153D



H FHF Authority 6026 ET, sire of Lot 14C

Consigned by Owen Brothers Cattle Company, Bois D Arc, Missouri

LOTS 15 - 22

***SIMMENTAL  
& SIMANGUS  
GENETICS***









15

## JS BARB 57F

ASA# 3439410 | BLACK | POLLED | 03.05.18 | 50% SIM / 50% ANGUS | FEMALE

MR HOC BROKER	SVF STEEL FORCE S701	CNS DREAM ON L186
	JM BF H25	SVF SHEZA BEAUTY L901
		G&L BLACKFOOT 716D
		YC MISS BIK B80
KAR BARB 1160	S A V BISMARCK 5682	G A R GRID MAKER
	KAR BARB 8134	S A V ABIGALE 0451
		LCC NEW STANDARD
		K M BARB 642

<b>CED</b>	<b>BW</b>	<b>WW</b>	<b>YW</b>	<b>ADG</b>	<b>MILK</b>	<b>MWW</b>	<b>CW</b>	<b>YG</b>	<b>MARB</b>	<b>BF</b>	<b>REA</b>	<b>API</b>	<b>TI</b>
12.7	0.7	66.7	99.9	0.21	21.6	54.9	25.2	-0.17	0.05	-0.036	0.47	110.0	65.2

Sullivan Farms will retain two successful flushes.

Safe bred to 3ACES Skyfall 9576 (Angus). Due 04.04.20.

JS Barb 57f is an absolute powerhouse when you study her bone work and body mass yet still maintains that mass in a very smooth maternal design with some added performance. Her donor dam, KAR Barb 1160 is a SAV Bismark daughter for JS Simmentals. This young future donor will add value to anyone's program that will click very well on a lot of today's popular sires. The Broker daughters are making incredible cows with excellent udders and milking abilities. JS Barb 57F has a successful show career for Sara Sullivan that included a Reserve Division at the 2019 FWSS Open Show.

**Consigned by Sullivan Farms, Dunlap, IA**



JSUL Mary's Profit 8352F, Lot 16, is a full sib to Lot 17 embryos.



JBSF Proud Mary 317C, dam

16

## JSUL MARY'S PROFIT 8352F

ASA# 3565519 | BLACK | POLLED | 09.14.18 | PB SIMMENTAL | FEMALE

PROFIT	WS PILGRIM H182U	CNS DREAM ON L186
	WAGR PANARAMA 204Z	WS MARLA 276M
JBSF PROUD MARY	YARDLEY HIGH REGARD W242	MR HOC BROKER
	BROOKS STEELMAGNOLIA X57	3C MELODY M668 BZ
		YARDLEY IMPRESSIVE T371
		MISS YARDLEY T68
		SVF STEEL FORCE S701
		BROOKS PEGGY SUE

<b>CED</b>	<b>BW</b>	<b>WW</b>	<b>YW</b>	<b>ADG</b>	<b>MILK</b>	<b>MWW</b>	<b>CW</b>	<b>YG</b>	<b>MARB</b>	<b>BF</b>	<b>REA</b>	<b>API</b>	<b>TI</b>
6.4	2.6	57.1	81.4	0.15	24.2	52.7	26.9	-0.42	-0.05	-0.099	0.76	103.0	59.2

Consigned by Sullivan Farms, Dunlap, IA

Sullivan Farms will retain two successful flushes. Sells open.

JSUL Mary's Profit 8352F was one of four sisters born at Sullivan Farms in their 2018 fall calf crop. She was picked to be held back to add to our show string. We have decided to offer this great female to you in her prime and right before breeding time on her. Whether you decide to show her or make part of your donor program she will add value to your program either way. If you do decide to show her everyone better watch out come this summer.

Her full sister JSUL Proud Mary 8380F sold this past Spring in Tim Schaeffer's sale for \$19,500 and has had a successful show run this far being selected division champion at the National Junior Heifer show and Reserve Division Champion at the '19 NAILE Junior Show. These two females come from one other most proven cows in the Simmental breed JBSF Proud Mary 317C. She has worked literally to every sire we have done her with.



JSUL Proud Mary 8380F, full sister to Lot 16 & 17



JBSF Proud Mary, donor dam to Lot 16 & 17



JSUL Mary is Proud 8047F, daughter of donor dam, JBSF Proud Mary



JSUL Something About Mary, son of the donor dam to Lot 17. Our new AI sire from the breed leading donor cow, JBSF Proud Mary. Owned with Griswold Cattle Company

17

## FOUR IVF SEXED FEMALE EMBRYOS

Selling one package of four purebred Simmental IVF SEXED FEMALE embryos.

PROFIT	WS PILGRIM H182U	CNS DREAM ON L186
	WAGR PANARAMA 204Z	WS MARLA 276M
JBSF PROUD MARY	YARDLEY HIGH REGARD W242	MR HOC BROKER
	BROOKS STEELMAGNOLIA X57	3C MELODY M668 BZ
		YARDLEY IMPRESSIVE T371
		MISS YARDLEY T68
		SVF STEEL FORCE S701
		BROOKS PEGGY SUE

### SIRE ...

CED	BW	WW	YW	ADG	MILK	MWW	CW	YG	MARB	BF	REA	API	TI
5.0	4.1	61.1	84.0	0.14	24.8	55.3	18.6	-0.39	0.00	-0.093	0.61	98.9	60.5

### DAM ...

CED	BW	WW	YW	ADG	MILK	MWW	CW	YG	MARB	BF	REA	API	TI
7.9	1.2	53.2	78.8	0.16	23.7	50.2	35.1	-0.44	-0.10	-0.105	0.90	107.2	57.9

Consigned by Sullivan Farms, Dunlap, IA

JBSF Proud Mary is quickly proving herself and becoming one of the most consistent Donors at Sullivan Farms to ever walk. The Profit x Proud Mary mating was extremely popular and consistent in our 2018 fall calf crop. We had four full sibs to this mating. One sib sold through the 2019 Schaeffer/Tice Fall heifer sale for \$19,500 that went on to be selected as Division Champion this past Summer the National Junior Heifer and Reserve Division at the 2019 NAILE. Another full sister sold through Sullivan Farms Spring/ Fall heifer online sale for \$6,000 to Schaeffer/ Tice for a future donor.

JSUL Mary's Profit 8352F a featured lot in this sale is also a full sister to these embryos. Seems like no matter what bull we use on Proud Mary it just clicks. In Proud Mary's first calf crop her progeny by HPF Quantum Leap Z952 has dominated the show ring, JSUL Mary Is Proud 8047F, was Calf Champion and Reserve Overall Purebred Simmental Female at the 2018 NAILE Open Show. She also went on to be selected Grand Champion Simmental Female at the 2019 FWSS Open Show, and was also recently selected as the 2019 Junior Sweepstakes Junior Show Grand Champion Female.



RWA Krishaw-ET, dam of Lot 18

- 2017 OYE Percentage Supreme Champion
- 2017 Simmental Regionals Percentage Supreme Champion
- 2017 Junior National Sweepstakes Reserve Supreme Champion
- Numerous 2016 Jackpot Shows Grand & Reserve Champions

- 2019 Simmental Breeders Sweepstakes Percentage Junior Show Grand Champion
- 2019 Simmental Breeders Sweepstakes Percentage Open Show Grand Champion
- 2019 Tulsa State Fair Third Overall Supreme Champion & Grand Champion Percentage
- 2019 NAILE Percentage Grand Champion Bull

## SEMEN PACKAGES

### 18 RECKONING 711F

ASA# 3553633 | BLACK | POLLED | 03.10.18 | 75% SIMMENTAL / 25% ANGUS | MALE

YARDLEY UTAH Y361	GCC HARD AS STEEL 144W
W/C RELENTLESS 32C	MISS YARDLEY T170
MISS WERNING KP 8543U	WAGR DREAM CATCHER 03R
	MISS WERNING 534R
FBF1/SF IGNITION	FBF1 COMBUSTIBLE
RWA KRISHA-ET	FBF1 GORGEOUS LADY
CHAMPION HILL BLACKBIRD 8003	S A V BRAVE 8320 USAAN
	S A V BLACKBIRD 5296

CED	BW	WW	YW	ADG	MILK	MWW	CW	YG	MARB	BF	REA	API	TI
12.3	1.8	60.5	82.5	0.14	18.6	48.9	26.9	-0.34	0.15	-0.049	0.90	116.7	62.6

**Consigned by Elmore Cattle Services, Berlowitz Cattle & Forgy Cattle Company**

Selling the following ... 25 total 1% semen interests at \$1,000 (20 units) with option to buy as many as you would like. (Click and buy at any time prior to and/or during the sale on [www.AllBreeds365.com](http://www.AllBreeds365.com))

Exclusive Canadian semen rights will be offered. Contact Jason, any owners or any members of the AB365 team.

Reckoning 711F is one of the most respected bulls on the show circuit as of late. He comes off a big win at the very competitive 2019 NAILE show, where he was slapped grand champion bull honors. This 75% SimAngus bull has been appreciated and commended by some of the most sought-after judges around the country. They have all said how much they appreciate his moderation of frame, his sound structure and soft pasterns. They respect the bull's mobility and how he still maintains a tremendous amount of meat and muscle down his top line and in his hind quarter. To be that free and easy in his movement and still possess that amount of depth of flank, forerib is truly hard to find in a future herd sire prospect. This ¾ bull will work great on creating high percentage and purebred cattle. They great attribute is moderate birth and how well he will work on first calf heifers. His EPD profile is rock solid and just happens to be another positive as to why you might want to consider this bull. This past show champion offers an outcross pedigree to the respected lines of cattle in the breed such as Broker, Steel Force and Dream On. As quoted by Jason Elmore of Elmore Cattle Service, "Quite possibly the best animal to set foot on our place", we've been blessed to hang a halter on many champions, but this guy could be like taking a gun to a knife fight....the possibilities are endless.

He was bred in the Braelyn Berlowitz program where is dam, RWA Krishna (known by many as "Hello") will be a cornerstone donor for them for many years to come. We appreciate Forgy Cattle Company as one of the first programs to invest heavily into this great herd sire. Great partners we are more than excited to see what this unique sire can do!



Bailey's Profit's Dream,  
donor dam of Lot 19



W/C Relentless 32C, sire of Lot 19



JSUL Glamour Profit, full sib to Lot 20



Udell Glamour Girl 18B,  
dam of Lot 20



Profit, sire of Lot 20

19

## FOUR IVF SEXED FEMALE EMBRYOS

Selling one package of four purebred Simmental IVF SEXED FEMALE embryos.

YARDLEY UTAH Y361	GCC HARD AS STEEL 144W
W/C RELENTLESS 32C	MISS YARDLEY T170
MISS WERNING KP 8543U	WAGR DREAM CATCHER 03R
PROFIT	MISS WERNING 534R
BAILEY'S PROFIT'S DREAM	WS PILGRIM H182U
BAILEY'S MS DREAMY 946W	WAGR PANARAMA 204Z
	DSR COMMISSIONER R827
	SRF MISS DAKOTA 49K

### SIRE ...

CED	BW	WW	YW	ADG	MILK	MWW	CW	YG	MARB	BF	REA	API	TI
9.6	3.7	66.3	81.9	0.10	17.9	50.9	3.7	-0.48	0.11	-0.087	0.76	116.6	66.8

### DAM ...

CED	BW	WW	YW	ADG	MILK	MWW	CW	YG	MARB	BF	REA	API	TI
6.5	2.4	57.7	79.0	0.13	21.7	50.5	0.6	-0.47	-0.04	-0.103	0.78	101.3	60.0

**Consigned by Sullivan Farms, Dunlap, IA**

BAILEY'S PROFIT'S DREAM was the 2018 Grand Champion Simmental Female at National Junior Heifer Show. Bailey's Profit's Dream 706E was a very popular champion last summer in Minneapolis, she is combination of power, structural correctness, eye appeal, in a smooth maternal package. She was a past Hartman Cattle Company top seller and stems from Bailey's MS Dreamy 946W that is one of the hottest cows in the breed and is owned by Scott Bailey. W/C Relentless absolutely dominated that 2019 Simmental Junior Nationals by producing the top three females in the purebred show. The sky is the limit in this fresh new mating.

20

## FOUR IVF SEXED FEMALE EMBRYOS

Selling one package of four 3.27% Chi & 50% Simmental SEXED FEMALE embryos.

PROFIT	WS PILGRIM H182U	CNS DREAM ON L186
	WAGR PANARAMA 204Z	WS MARLA 276M
		MR HOC BROKER
	SILVEIRAS STYLE 9303	3C MELODY M668 BZ
UDELL GLAMOUR GIRL 18B	JSUL RED THUNDER 9051W	GAMBLES HOT ROD
		SILVEIRAS ELBA 2520
		ASHW WHO DA MAN
		SULL 60

**Consigned by Sullivan Farms, Dunlap, IA**

This was an impressive mating from the 2018 fall heifer calf crop at Sullivan Farms. Two full sibs were added to the Sullivan show string and another was sold privately for \$15,000. The most successful from this mating, JSUL Glamour Profit 8408F sold the Tim Schaeffer's spring sale for \$20,000 and has had a very successful start to her show career this far. She was most recently selected as the reserve champion % Simmental female in the Jr show at the 2019 NAILE and was also selected as the reserve champion % Simmental in the open and Jr show at the 2019 American Royal.

Udell Glamour Girl 18B, is a Silveiras Style daughter out of the JSUL Red Thunder Who Da Man donor for the Udell family. She was work extremely well at Sullivan Farms in their Simmental program. Her Fortune daughter sold for \$57,000 in the 2018 Maternal Legends and went on to be a division winner at the 2019 National Junior heifer show and Fifth Overall at the Illinois State Fair for Ashley Moore.

21

## FOUR IVF SEXED FEMALE EMBRYOS

Selling one package of four purebred 75% Simmental IVF SEXED FEMALE embryos.

PROFIT	WS PILGRIM H182U	CNS DREAM ON L186
	WAGR PANARAMA 204Z	WS MARLA 276M
	MR HOC BROKER	MR HOC BROKER
MISS PENNY 15B		3C MELODY M668 BZ
15X		SVF STEEL FORC S701
		JM BF H25

### SIRE ...

CED	BW	WW	YW	ADG	MILK	MWW	CW	YG	MARB	BF	REA	API	TI
5.0	4.1	61.1	84.0	0.14	24.8	55.3	18.6	-0.39	0.00	-0.093	0.61	98.9	60.5

### DAM ...

CED	BW	WW	YW	ADG	MILK	MWW	CW	YG	MARB	BF	REA	API	TI
7.4	1.4	59.1	85.3	0.16	18.5	48.0	12.3	-0.14	0.04	-0.023	0.29	93.2	57.9

Consigned by Sullivan Farms, Dunlap, IA

Miss Penny 15B was the dam to many of the top heifers on the Sullivan Farms 2019 Maternal Legends sale. Lot 12A from the 2019 Maternal Legends, a maternal sib to these embryos recently sold for \$31,000 to the Ferree Family. The versatile Miss Penny 15b crossed with the popular sire Profit is a fresh new mating at Sullivan Farms. I love the potential of this mating when u combine the eye appeal and overall mass of Profit with the structural correctness and body mass of Miss Penny 15b. With Penny's variety of matings and the quality of her progeny in the 2019 Maternal Legends sale we can expect great things in the perfect mating.



Miss Penny 15B,  
donor dam of  
Lot 21



JSUL Penny Up  
9256G, daughter of  
Lot 21 donor dam



DAF Reba C707,  
donor dam of  
Lot 22.



Profit, sire of  
Lot 21 & 22.

22

## FOUR IVF SEXED FEMALE EMBRYOS

Selling one package of four purebred 75% Simmental IVF SEXED FEMALE embryos.

PROFIT	WS PILGRIM H182U	CNS DREAM ON L186
	WAGR PANARAMA 204Z	WS MARLA 276M
	SILVEIRAS STYLE 9303	MR HOC BROKER
DAF REBA C707		3C MELODY M668 BZ
DAF REBA U16		GAMBLES HOT ROD
		SILVEIRAS ELBA 2520
		DAF JOKER N57
		JF REBA 5302R

### SIRE ...

CED	BW	WW	YW	ADG	MILK	MWW	CW	YG	MARB	BF	REA	API	TI
5.0	4.1	61.1	84.0	0.14	24.8	55.3	18.6	-0.39	0.00	-0.093	0.61	98.9	60.5

### DAM ...

CED	BW	WW	YW	ADG	MILK	MWW	CW	YG	MARB	BF	REA	API	TI
9.7	0.2	50.0	75.6	0.16	24.3	49.3	10.0	-0.14	0.25	-0.029	0.22	122.9	60.4

Consigned by Sullivan Farms, Dunlap, IA

DAF Reba C707, was a 2017 NWSS Jr. and Open Show Grand Champion % Female that also went on to be the Champion % Female at the 2017 FWSS. This mating will be one that we will defiantly be looking forward to more progeny to come from. Not only do I think they can be elite show heifers but make very valuable 3/4 Simmentals to breed back for 7/8 purebred Simmentals. DAF Reba C707 has the body mass and structural correctness to be a perfect fit with the popular sire Profit. These are genetics that u can count on with predictability.



SC Pay the Price C11, sire of Lot 23



LLJB Absolute Style 3056, donor dam of Lot 23

## 23 HEIFER PREGNANCY

Due 03.07.20 | SimSolution | Recip ID Y68

CNS PAYS TO DREAM T759  
 SC PAY THE PRICE C11  
 LLSF URABABYDOLL U194

SILVEIRAS STYLE 9303  
 LLJB ABSOLUTE STYLE 3056  
 MAGS WASSAIL

CNS DREAM ON L186  
 MLF BL JESSIE K336  
 GWS EBONYS TRADEMARK 6N  
 JBS ROCKIN ROBIN R194  
 GAMBLES HOT ROD  
 SILVEIRAS ELBA 2520  
 DHVO DEUCE 132R  
 MAGS MANDA

### SIRE ...

CED	BW	WW	YW	ADG	MILK	MWW	CW	YG	MARB	BF	REA	API	TI
8.3	2.7	67.1	98.4	0.20	16.2	49.7	29.1	-0.46	0.06	-0.093	0.96	106.1	67.9

### DAM ...

CED	BW	WW	YW	ADG	MILK	MWW	CW	YG	MARB	BF	REA	API	TI
12	-0.1	58	84	-	22	-	20	-0.17	0.09	-0.03	0.42	-	-

Consigned by Linhart Limousin, Leon, Iowa

Refocus your sights here. The donor, LLJ Absolute Style 3056A, is the multiple times National Champion Lim-Flex donor that has been responsible for producing north of \$750,000 in progeny. This heifer pregnancy represents a new approach with this sure fire donor dam that known for producing loose structured, high quality cattle with a 'look'. That said, the sire of this pregnancy, SC Pay The Price C11, is a purebred Simmental bull and the 2017 and 2018 National Western Grand Champion Purebred Bull. He is making quite an impression in the Simmental breed by siring sound, structurally correct calves with excellent phenotype which made him a perfect candidate for branching out the Absolute Style cow family tree. December 7th invest with confidence.





# #breedunity

LOT 24

# **CLUB CALF GENETICS**



This genetic consignment epitomizes the crossroads of where phenotypic quality and genetic diversity meet. These designer matings offer you the opportunity to invest in some of the freshest, most proven and club calf industry relevant genetics. The imagination runs wild when you project the boundless possibilities of the future offspring of these breed standouts. The renowned and widely acclaimed donor dam, RJ/Mogck Donor 400 possess a combination of structural integrity, body depth and fleshing ability even the most discriminating cattlemen would appreciate.

Her offspring to date have been quite simply exceptional, not only has she raised multiple steer calves that have hung many banners but, also all of her calves have been highly marketable! As evidence, we have sold multiple steer calves north of \$10,000 and as high \$33,000 by her.

Bottomline is, we feel these matings speak for themselves.



RJ/ Mogck Donor 400

## 24A THREE EMBRYOS

Selling one package of three embryos.

BUSINESS DONE RIGHT IN GOD WE TRUST 419HEATWAVE	LOVIN' THE BUSINESS AMMO 388/ DONOR 474 (3/4 CHAROLAIS) HEAT WAVE MAINE CROSS WALKS ALONE WAS MS MOLLY 23 (HABANERO) FIREWATER
WALK THIS WAY RJ/ MOGCK DONOR 400 PEBBLES	

## 24C THREE EMBRYOS

Selling one package of three embryos.

HEAT WAVE MONOPOLY W T F RUTH MEDINA	BHCS HEAT SEEKER 23 FAW TERI W T F BLACK CENTURY W T F DAISY ANN WALKS ALONE WAS MS MOLLY 23 (HABANERO) FIREWATER
WALK THIS WAY RJ/ MOGCK DONOR 400 PEBBLES	

## 24B THREE EMBRYOS

Selling one package of three embryos.

WALKS ALONE HERE I AM 805	HEAT WAVE 7587 DRAFT PICK SON X FULL FLUSH
WALK THIS WAY RJ/ MOGCK DONOR 400 PEBBLES	WALKS ALONE WAS MS MOLLY 23 (HABANERO) FIREWATER

## 24D THREE EMBRYOS

Selling one package of three embryos.

SMILIN BOB SMOKIN BOB CHAR X CHI	WAVE ON WAVE GC FOXIE MOXIE
WALK THIS WAY RJ/ MOGCK DONOR 400 PEBBLES	WALKS ALONE WAS MS MOLLY 23 (HABANERO) FIREWATER



In God We Trust son



Here I am son



Monopoly son



Smokin Bob son

Consigned by RJ Cattle Co., Mitchell, SD & Mogck, Tripp, SD

LOT 25 - 28

# ***RED ANGUS GENETICS***





EDG Finley 3121, daughter of Lot 25

- 2019 NAILE Red Angus Open Show Grand Champion
- 2019 NAILE Red Angus Junior Show Grand Champion
- 2019 NAJRAE Owned Show Grand Champion
- Bred/ sold by Edge  
Owned/ Shown by Hadley Hartman



MNS Pearle 3121

## FLUSH MNS PEARLE 3121

25

RAAA# 1646400 | 05.10.13 | PB RED ANGUS | FEMALE

RMS BOWIE 0708	PIE GET R DONE 684	PIE CHICAWA 366
	MFIN MISS AVALANCHE S29	PIE RED RUBY 4094
		PIE AVALANCHE 381
		MFIN MISS BULLSEYE N5
		PIE CHICAWA 366
PIE MISS GOODNIGHT 8003	PIE GET R DONE 684	PIE RED RUBY 4094
	PIE MISS GOODNIGHT 6261	LCB HOSS A444N
		PIE MISS GOODNIGHT 088

BW	WW	YW	MILK	MARB	YG	CW	REA	FAT
-0.8	57	84	19	0.23	0.05	24	0.15	0.01

Consigned by Edge Livestock, West Branch, IA

Selling a right to flush to bull of buyers choice. Buyer pays IVF flush expenditures, guarantee of six embryos and maximum of 10.

Folks, here is a true sale highlight to invest in proven elite genetics! "Pearle" has continually produced at the highest level! As evidence, her daughter EDG Finley 3121, was the talk of the town in Louisville for good reason as she sails to the top claiming the North American International Livestock Exposition Grand Champion Red Angus banner. That said, this is our inaugural step in offering this exclusive flush on this can't miss donor female. Visually, the "Pearle" progeny impress even the most discriminating stockmen with their impeccable foot size, bone work and overall structural integrity. This foundation female is a definite breed changer and December 7th is your opportunity invest in a female proven to produce on the highest level.

Buyer is guaranteed six embryos and they will be split between the buyer and owner 50/50 if the egg count exceeds 10. Flushing process and shipping is at buyer's expense and owner's convenience. Bull of choice for the buyer.



Red Blairs Pricilla 44Z,  
dam of Lot 26 & 27



MANN Red Box 55C, sire of Lot 26



KJHT Power Take Off, sire of Lot 27

This genetic consignment epitomizes the crossroads of where phenotypic quality, predictability and genetic diversity meet. These designer embryos offer you the opportunity to invest in some of the Red Angus breed's freshest and most industry relevant genetics. The imagination runs wild when you project the boundless possibilities of the future offspring of these breed standouts.

The donor dam, Red Blair's Priscilla 44Z, has become one of the most recognizable Red Angus donor females in North America. Her sire Kargo has made his mark producing top females and bulls for both Blairs.Ag Cattle and Timber Creek. Individually, Priscilla 44Z, possess a combination of structural soundness, base width and fleshing ability even the most astute cattlemen would appreciate. Her offspring to date have been exceptionally high performing and marketable, top many sales across North America! We feel these matings with Red Box and PTO speak for themselves and represents the progressive direction of acclaimed Blairs.AG breeding program. We invite you to appraise the unmatched genetic value on offer.

26

**FOUR EMBRYOS**

Selling one package of four Red Angus embryos.

- |                           |                             |
|---------------------------|-----------------------------|
| SLGN WIDELOAD 920W        | UBAR HIGH CAPACITY 224      |
| MANN RED BOX 55C          | MEADO-WEST PERSUASION       |
| PELTON MISS AJA 0839U     | 5L NORSEMAN KING 2291       |
|                           | PELTONS MISS IDA 0547R      |
| RED RINGSTEAD KARGO 215U  | RED RINGSTEAD KARGO 107M    |
| RED BLAIRS PRICILLA 44Z   | RED RINGSTEAD MS EQUAL 589P |
| RED BRYLOR PRISCILLA 304S | RED BRYLOR SDL RICHTER 212R |
|                           | RED BRYLOR PRISCILLA 67W    |

SIRE ...	BW	WW	YW	MILK	MARB	YG	CW	REA	FAT
	-0.2	66	103	20	0.32	0.05	28	0.29	0.03
DAM ...	BW	WW	YW	MILK	MARB	YG	CW	REA	FAT
	6	1.2	61	92	0.20	0.11	25	0.03	0.02

Consigned by Blairs Ag Cattle, Lanigan, Saskatchewan, Canada and Baxter Blair

27

**FOUR EMBRYOS**

Selling one package of four Red Angus embryos.

- |                             |                             |
|-----------------------------|-----------------------------|
| RED SOO LINE POWER EYE 161X | RED COCKBURN RIBEYE 308U    |
| KJHT POWER TAKE OFF         | RED TR LYNN 301R            |
| SRA PAINTBUCKET             | RED NORTHLINE FAT TONY 605U |
|                             | SRA PICABO PROMISE          |
| RED RINGSTEAD KARGO 215U    | RED RINGSTEAD KARGO 107M    |
| RED BLAIRS PRICILLA 44Z     | RED RINGSTEAD MS EQUAL 589P |
| RED BRYLOR PRISCILLA 304S   | RED BRYLOR SDL RICHTER 212R |
|                             | RED BRYLOR PRISCILLA 67W    |

SIRE ...	BW	WW	YW	MILK	MARB	YG	CW	REA	FAT
	13	1.0	49	80	0.47	0.10	19	0.00	0.02
DAM ...	BW	WW	YW	MILK	MARB	YG	CW	REA	FAT
	6	1.2	61	92	0.20	0.11	25	0.03	0.02

Consigned by Blairs Ag Cattle, Lanigan, Saskatchewan, Canada and Baxter Blair



28

## FLUSH RED BLAIR'S LARKABA 42A

CRAA# 1765076 | 10.03.13 | PB RED ANGUS | FEMALE

RED SVR GANGSTER 14S	RED GEIS HI HO 180'04
RED WHEEL GANGSTER 31Y	RED DWAJO DUCHESS 75M
BLACK WHEEL COUNTESS 69S	RED WHEEL JACK DANIELS 18M
	BLACK WHEEL COUNTESS 7N
RINGSTEAD DAWSON 717T	RED RINGSTEAD DAWSON 209R
RED BLAIRS LARKABA 101Y	GET-A-LONG ELBA 70S
RED BLAIR'S LARKABA 17T	RED SOUTHLAND ENERGIZER 100R
	RED BAR-E-L LARKABA 23R

BW	WW	YW	MILK	MARB	YG	CW	REA	FAT
3.3	26	48	23	0.23	-	2.0	0.26	0.010

**Consigned by Baxter Blair, Lanigan, Saskatchewan, Canada,  
Tres Marias of Argentina and El Sauz Ranch of Mexico!**

Selling a right to flush to bull of buyers choice. Buyer pays IVF flush expenditures, guarantee of six embryos and no maximum.

Larkaba 42A is an absolute game changer as her calves are continuously stamped with unrivaled muscle shape, softness of rib, natural stoutness and dimension with the signature dark cherry red color to top it off year after year. Her success has been measured repetitively through the merit of her offspring, including Backroad 2C, Autograph 2D, and Lucky Strike 9001, all of which have all hit the industry by storm through the appraisal of numerous astute cattleman. 42A is a foundation female that has earned the moniker of a can't miss donor. The bottomline is, whether it's producing a top-notch herd bull prospect or high quality daughter this is the cow that can do it consistently. Invest in this right to flush, it's sure to enhance any cattle operation.

Terms of the flush will be IVF guaranteeing a minimum of six embryos and three pregnancies. The flush will take place at the Trans Ova-Yackley, Onida, SD, and is to be done this Spring.



Red Double B Backroad 2C, son of Lot 28



Red Double B 6M Autograph 2D, son of Lot 28



Red Double B Lucky Strike 9001, son of Lot 28



LOT 29

**LIM-FLEX  
GENETICS**





TASF Crown Royal 960C, sire of Lot 29

29

## TASF FALLON 190F

LFF# 2147505 | 01.17.18 | (75%) LIM-FLEX | BLACK | HOMO POLLED | FEMALE

DHVO DEUCE 132R  
TASF CROWN ROYAL 960C ET  
TASF WHISKEY LULLABY 357W

GPFF BLAQUE RULON  
AMY JO DHAN 20L  
EXLR NASDAQ 380R  
TMCK MISS THICK 37T  
EXLR NEW GENERATION 071M  
MAGS FRUITFUL 487M  
BON VIEW NEW DESIGN 1407  
SEDGWICKS PRIDE 4651

MAGS SASQUATCH  
PBR 348U  
SEDGWICKS PRIDE 3465

CED	BW	WW	YW	MK	CEM	SC	ST	DOC	YG	CW	REA	MB	\$MTI
4	2.6	68	102	22	2	0.80	9	10	-0.42	29	0.87	-0.09	50.67

Consigned by Sullivan Farms, Dunlap, IA

Safe bred to PVF Insight 0129 (PB Angus) son. Due 03.24.20.

A female that comes from one of the most prestigious programs in the country that raises limousin females, Thomas and Son's Farms. TASF Fallon 190F was a calf champion at the 2019 NWSS and is on track for the 2020 NWSS hill show. She is a female of added eye appeal, structural correctness, and muscle shape in a very smooth maternal design. Sara Sullivan will be showing this female at the upcoming 2020 NWSS and FWSS. This will be the best Lim-Flex female shown by Sara in recent years.

With her genetic makeup and build this young female is sure to produce future show heifers at the highest level. Seller retains the right to two successful future flushes and show rights through 2020 NWSS & FWSS.



LOTS 30 - 37

**MAINE ANGUS  
CHIANINA  
MAINETAINER  
GENETICS**



30

## WSCC PRINCESS 81F ET

AMAA# 499800 | 05.04.18 | MAINE ANGUS | BLACK | POLLED | FEMALE

BOE GARTH  
MINN HARD WHISKEY 591Y  
BOE MISS JOLENE

EXAR PRINCESS 2225  
PVF INSIGHT 0129  
EXAR PRINCESS 1416

DCC HARD DRIVE 138R  
JSC KATIE 5S  
GVC SUH 01W  
BOE KELSEY  
S A V BRILLIANCE 8077  
PVF MISSIE 790  
DAMERON FIRST CLASS  
EXAR PRINCESS 7879

**Consigned by Sullivan Farms, Dunlap, IA**



BOE Garth, sire of Lot 30

Sullivan Farms will retain show rights thru the NWSS and FWSS  
Safe bred to Daddy's Money. Due 2.02.20

A powerhouse Maine Angus female that was raised by Willow Springs Cattle Company. A daughter of the popular Maine Anjou sire BOE Garth and out of an Insight donor cow that originated at Express Ranch. This young female is a moderate framed beast with incredible body shape. She reads to be maternal enough to raise elite females and powerful enough with structural integrity to produce high end show steers. Princess 81F's full sister was recently selected at the Grand Champion Maine Angus Female at the 2019 American Royal.



WLR Eden ET, dam of Lot 31



JSUL Who Dat Class 7020E ET



JSUL Who Dat 1602Y,  
full sib to sire of Lot 31



JSUL Who  
Dat Raptor,  
full sib to  
sire of  
Lot 31

## 31 FOUR IVF SEXED FEMALE EMBRYOS

Selling one package of four 6.54% Chianina SEXED FEMALE embryos.

ASHW WHO DA MAN  
JSUL WHO DAT CLASS 7020E ET  
JSUL SULTRY 6640

WHO MADE WHO 411F 1CM  
ASHW CA X MA X SM 55  
BHCS HEAT SEEKER 23  
JSUL MA X AN 6651  
GAMBLES HOT ROD  
SILVEIRAS ELBA 2520  
GPFF BLAQUE RULON  
ALCM KOOL TUNES

SILVEIRAS STYLE 9303  
WLR EDEN ET  
MAGS PHANTOMS PRIZE

**Consigned by Sullivan Farms, Dunlap, IA**

WLR Eden 80E was the popular 2019 NWSS Grand Champion Lim-Flex Female as well as the 2018 NWSS Reserve Grand Champion Lim-Flex female. She is that has incredible body shape, huge feet and legs and extremely sound when you set her into motion. We love this cross when you combine the unique eye appeal and true muscle mass of JSUL Who Dat Class. Who Dat Class stems from the great Who Da Man/ 6640 mating that produced the 2017 and 2012 NAILE Supreme Champion Females. Who Dat Class is a new sire that we can't wait to see his progeny hit the ground in 2020 at Sullivan Farms.

# SELLING CHOICE OF IVF DONOR CYCLE ON 2 SISTERS

## 32A JSUL WHO DAT STEINER 8267F ET

ACA# 396117 | 03.07.18 | 15.1% CHIANINA | BLACK | POLLED | FEMALE

## 32B JSUL WHO DAT STEINER 8266F ET

ACA# 396116 | 03.07.18 | 15.1% CHIANINA | BLACK | POLLED | FEMALE

WHO MADE WHO 411F 1CM      BIX TAKE CHARGE  
ASHW WHO DA MAN              LSC MISS GLORY 411C CAX  
ASHW CA X MA X SM 55

SULL RIGHT DIRECTION ET      CF TRUMP X  
SUL JAYLNN 0904X              NPS DESERT ROSE 004  
JSUL JALYNN 344              HEAT WAVE  
MISS FOREPLAY

**Consigned by Sullivan Farms, Dunlap, IA**

A rare opportunity to own the very first IVF cycle on the choice of these two popular full sisters that have had very decorative show career and a pedigree that's as popular and proven as they come. JSUL Who Dat Steiner 8267F was a many time champion including the supreme champion female at the 2018 Down for the Cause jackpot show and the 2018 Kansas Beef expo. She was also selected 4th overall at the 2019 Iowa St Fair 4-h show and was recently selected as the champion AOB at the 2019 NAILE for Sara Sullivan. JSUL Who Dat Steiner 8267F is due to calve January 1st, 2020 and will be available to IVF 60 days after she calves.

JSUL Who Dat Steiner 8266F was a very popular champion this fall as she was selected as the champion AOB at the American Royal and was champion Chianina in the NAILE open and Jr shows. She is due to calve March 21, 2020 and will be available 60 days after she calves.

These two sisters are sire by the popular sire, Who Da Man and are out of the JSUL Jalylnn 0904 "Steiner" donor cow. The Who Da Man progeny have become some the most versatile and valuable cow in the industry. They are the kind of female that can do it all, whether u want to raise show heifers of the highest level or the next great show steers the kind of females have the genetic make-up and build to do which ever u have the desire for. For those of you that saw these sisters show this fall in NAILE or the American Royal, there was a lot of debate on which one was better. So here is your opportunity to decide which one u like better to breed off of.

**SPECIAL TERMS** - Sullivan Farms will guarantee a minimum of five freezable or transferable embryos and anything over five will be yours. All IVF cycle costs are at buyer's expense. Sullivan Farms will offer proven IVF quality semen on the following bulls free of charge, HIGG Franchise 868f, HPF Quantum Leap Z952, Colburn Primo, Silveiras Style 9303, and Conley No Limit 8188, and BOE Epic. Buyer can also use bull of their choice, at their expense. Buyer can choose to put in their own recipes or Trans Ova recipes, at buyer expense. IVF cycle will take place at Trans Ova in Chillicothe, Missouri. All IVF cycles must be paid in full directly after the sale.



JSUL Who Dat Steiner 8267F



JSUL Who Dat Steiner 8266F



SUL Jaylnn 0904X, dam



JSUL Who Dat Raptor 6976D, dam of Lot 33



JSUL Who Dat Class 7020E ET, full sib to the donor dam of Lot 33



JSUL Who Dat 1602Y, full sib to the donor dam of Lot 33.



NMR Maternal Made, sire of Lot 33

## 33 **FOUR IVF SEXED FEMALE EMBRYOS**

Selling one package of four 6.54% Chianina/ 25% MaineTainer SEXED FEMALE embryos.

BPF MERCEDES BENZ 131U  
NMR MATERNAL MADE  
NMR 0-04X

COWAN'S ALI 4M  
DCCO PLAYMATE 701P  
IRISH WHISKEY

ASHW WHO DA MAN  
JSUL WHO DAT RAPTOR 6976D ET  
JSUL SULTRY 6640

WHO MADE WHO 411F 1CM  
ASHW CA X MA X SM 55  
BHCS HEAT SEEKER 23  
JSUL MA X AN 6651

JSUL Who Dat Raptor 6976D was the 2017 NAILE Supreme Champion Over-all All Breeds. JSUL Who Dat Raptor stems from the great Who Da Man/ 6640 mating. This is the first of this mating and can not wait to see the results when they hit the ground. Sullivan Farms has seen a ton of success when crossing the Who Da Man daughters with Maternal Made. Note this mating is a dual registered MaineTainer and 6.54% Chianina.

Consigned by Sullivan Farms, Dunlap, IA

34

# FOUR IVF SEXED FEMALE EMBRYOS

Selling one package of four 8.86% Chianina SEXED FEMALE embryos.

DAMERON FIRST CLASS	EXG RS FIRST RATE S903 R3
COLBURN PRIMO 5153	DAMERON NORTHERN MISS 3114
SILVEIRAS SARAS DREAM 1339	SILVEIRAS STYLE 9303
	EXG SARAS DREAM S609 R3
ASHW WHO DA MAN	WHO MADE WHO 411F 1CM
BMW ACE 402E ET	ASHW CA X MA X SM 55
	RDD DESTINYS ACE
MS ROCKN ACE 36U	SLC LACI 4123P

**Consigned by Sullivan Farms, Dunlap, IA**

The 2019 NWSS Reserve Champion Chianina Female, BMW ACE 402E. This young female after her show career was quickly added to Sullivan Farms donor program. This elite Who Da Man daughter stems from the one the greatest Chiangus females in the breed MS Rockn Ace 36U donor of the Winegardner family. BMW ACE 402E might be MS Rock'n Ace 36U's best daughter to date. We all know the value and consistency of the Who Da Man progeny. This mating combines some of the hottest and most proven genetics in today's show ring. The Who Da Man daughters have crossed extremely well when mated with today's Angus bulls. We expect big things from this mating from this great young new donor.



BMW Ace 402E ET, dam of Lot 34 & 35



Colburn Primo 5153, sire of Lot 34

35

# FOUR IVF SEXED FEMALE EMBRYOS

Selling one package of four 8.86% Chianina/ 25% MaineTainer SEXED FEMALE embryos.

BPF MERCEDES BENZ 131U	COWAN'S ALI 4M
NMR MATERNAL MADE	DCCO PLAYMATE 701P
NMR 0-04X	IRISH WHISKEY
ASHW WHO DA MAN	WHO MADE WHO 411F 1CM
BMW ACE 402E ET	ASHW CA X MA X SM 55
	RDD DESTINYS ACE
MS ROCKN ACE 36U	SLC LACI 4123P

**Consigned by Sullivan Farms, Dunlap, IA**

Another new mating with the Denver Champion, MS Rockn Ace 36U. Sullivan Farms has seen a lot of recent success when mating Maternal Made on Who Da Mans daughters. This will be an elite dual registered MaineTainer and 8.86% Chianina.



NMR Maternal Made, sire of Lot 35



BMW Onset, sire of Lot 36



JSUL Who Dat 1602Y,  
maternal sibs to Lot 32.



JSUL Who Dat Raptor 6976D, dam of Lot 32

**36**

## FOUR IVF SEXED FEMALE EMBRYOS

Selling one package of four 13.43% Chi SEXED FEMALE embryos.

BMW ONSET	ASHW WHO DA MAN	WHO MADE WHO 411F 1CM
	MS ROCKN ACE 36U	ASHW CA X MA X SM 55
	BHCS HEAT SEEKER 23	RDD DESTINY'S ACE
SSUL SULTRY 6640-2	JSUL MA X AN 6651	SLC LACI 4123P
		DE BULL CAX
		BC TEX SHORTHORN 23

Consigned by Sullivan Farms, Dunlap, IA

This is a brand new mating on the Sultry 6640 donor and her clones. Sullivan Farms had a few from this mating in their 2019 calf crop that sold very well and we they held back to make future donor cows in their program. The progeny from this mating had a lot of the same unique features that we have come to expect out of the Who Da Man/ 6640 matings. The Who Da Man/ 6640 mating a put a huge impact in the industry with some the top donors cows in the country and not to mention some of the top show females to have ever walked across the green chips at the NAILE. JSUL Who Dat Raptor and JSUL Who Dat 1602Y were both NAILE Supreme Champion Females overall breeds. Note, this new mating will be 13.43% Chianina. We know the ceiling will be extremely high and promising with more to come from this fresh new mating.





• 2019 American Royal Grand Champion MaineTainer

37

## FLUSH MELANIA

AMAA# 496293 | 03.02.18 | 25% MAINE-ANJOU | BLACK | POLLED | FEMALE

GAMBLES HOT ROD  
SILVEIRAS STYLE 9303  
SILVEIRAS ELBA 2520

MINN HARD WHISKEY 591Y  
JAJ HARD MOONSHINE  
JAJ 286S

FAMOUS 7001  
CHAMPION HILL LADY 703  
TWINVALLEY PRECISIONE161  
DAR ELBA 55  
DCC HARD DRIVE 138R  
JSC KATIE 5S

Consigned by CB Cattle Co. and AK Show Cattle

Selling a right to flush to bull of buyers choice.

Buyer pays IVF flush expenditures, guarantee of six embryos and no maximum.  
Flush date May 1, 2020.

Folks, here is a true sale highlight to invest in proven championship genetics! The donor dam, Melania is a sound structured, bold ribbed, muscular, attractive patterned female that has competed at the highest level across the country with success, like winning the national championship at the 2019 American Royal. The bottom-line is, if you're in the business of quite simply making flat good ones that project to compete at the highest level in showing's across the country start with this donor on the maternal side of the equation. It's with great confidence we place this unique flush opportunity on offer for your appreciated appraisal. Invest today.

Notta 151A Kat 202E



Notta 1B Hawkeye 444E



Outback Ms Flash Dancer 112E



Notta 110B Chillkoot 301F

*E.A.*

# NOTTA RANCH

Jason and Sara Goodfellow | 780.872.8788, Jason cell  
PO Box 307, Neilburg, Sask S0M 2C0 Canada  
nottaspeckleparks@hotmail.com | www.nottaranch.com

# The SPECKLE PARK *genetics*

Notta 1B Unique 217E



LOTS 38 - 46

# SPECKLE PARK GENETICS





## FLUSH NOTTA 151A KAT 202E

38

CANADIAN# 7469- PB | 01.10.17 | 100% SPECKLE PARK | FEMALE

SIX STAR 82U ROYAL FLESH 101Y	STAR BANK KING GEORG 82U
NOTTA 101Y BLACK CAP 151A	STAR BANK 53R
NOTTA 50S JANETTE	PRAIRIE HILL JOHN WAYNE 50S
	NOTTA PRETENDER 64P
A&W 15R	BELMORAL'S SPECIAL 99H
NOTTA 15R KAT 7A	TRIPLE A GEM 15G -849-FS
STAR BANK 90P	STAR BANK 58L
	STAR BANK 50J

**Consigned by Notta Ranch, Neilburg, Saskatchewan, Canada**

Selling the right to one flush.

From the ground up this female is outstanding. She has a perfect set of feet and legs that roll into a body phenotype that is second to none. If you're looking for that added depth of rib and the power in a female cow line ... this is the one for you. This is a Speckle Park opportunity you don't want to miss!

These genetics are qualified for the USA ONLY.

Conventional flush, choice of flush location, Bow Vally genetics, Sundown livestock transplants. Flushing can take place as early as February 15th, 2020. Five embryo guarantee; split 50/50 after 10, all cost and semen for the flush is at the buyers expense.



## FLUSH 39 NOTTA 1B UNIQUE 217E

CANADIAN# 7503-- PB | 03.20.17 | 100% SPECKLE PARK | FEMALE

UNEEDA ZAPPER 13Z  
CAJA ZEPPELIN 1B  
NOTTA 60 W PHOTOFINISH 1 Z

STAR BANK LACERTA  
NOTTA 68L UNIQUE IMPRESSION 5U  
STAR BANK 90P

UNEEDA WALTER 21W  
MISTY FRITZ OF P.A.R. 13M  
RIVER HILL 26T WALKER 60W  
NOTTA PHO-FINISH 54P  
SPOTS 'N SPROUTS JUNO 103J  
STAR BANK 55H  
SPOTS 'N SPROUTS JUNO 103J  
STAR BANK 11H

**Consigned by Notta Ranch, Neilburg, Saskatchewan, Canada**

Selling the right to one flush.

A half sister to the Champions of the World winning bull and Canadian National Grand Champion Bull Notta 1B Hawkeye 444E. She is one of the most eye appealing Speckle Park females ever to be displayed. Her ability to be thick and broody and still stay extremely feminine is what will for ever set her apart for many generations.

These genetics are qualified for the USA ONLY.

Conventional flush, choice of flush location, Bow Vally genetics, Sundown livestock transplants. Flushing can take place as early as February 15th, 2020. Five embryo guarantee; split 50/50 after 10, all cost and semen for the flush is at the buyers expense.



Notta 1B, Hawkeye 444E,  
a half brother to Lot 39

## THREE IVF EMBRYOS

Selling one package of three IVF embryos.

CAJA ZEPELIN 1B	UNEEDA ZAPPER 13Z
NOTTA 1B HAWKEYE 444E	NOTTA 60W PHOTO FINISH 1 Z
NOTTA 50S JANETTE 5W	PRAIRIE HILL JOHN WAYNE 50S
	NOTTA PRETENDER 64P
NOTTA 101Y BARCODE 113B	SIX STAR 82U ROYAL FLESH 101Y
OUTBACK MS FLASH DANCER 122E	SPOTS 'N SPROUTS 3R
RAVENWORTH ACADIA 112B	RIVER HILL 12X ZAAR 7Z
	STAR BANK SILKEN 83S

**Consigned by Notta Ranch, Neilburg, Saskatchewan, Canada**

Guarantee of one pregnancy when implanted by a certified technician

We've joined two powerhouses of the breed with this combination. The proof of the success is evident with this female's first calf selling to Colorado at 6 months old. This calf's genetic pairing shows characteristic of neck extension, chiseled front end and a "stop you in your tracks" color pattern. These calves will carry the show ring flare and receive the demanded attention that Speckle Parks are known for around the world.

These genetics are qualified for the USA ONLY.



Notta 1B Hawkeye 444E, sire of Lots 40 & 41

## THREE IVF EMBRYOS

Selling one package of three IVF embryos.

CAJA ZEPELIN 1B	UNEEDA ZAPPER 13Z
NOTTA 1B HAWKEYE 444E	NOTTA 60W PHOTO FINISH 1 Z
NOTTA 50S JANETTE 5W	PRAIRIE HILL JOHN WAYNE 50S
	NOTTA PRETENDER 64P
NOTTA 101Y BLACK CAP 151A	SIX STAR 82U ROYAL FLESH 101Y
NOTTA 151A KAT 202E	NOTTA 50S JANETTE
NOTTA 15R KAT 7A	A&W 15R
	STAR BANK 90P

**Consigned by Notta Ranch, Neilburg, Saskatchewan, Canada**

Guarantee of one pregnancy when implanted by a certified technician

From the ground-up this female is outstanding. She has a perfect set of feet and legs that roll into a body phenotype that is second to none. If you're looking for that added depth of rib and the power in a female cow line ... this is the Speckle Park opportunity you don't want to miss ... backed up by none other than Notta 1B Hawkeye 444E "Champion of the World 2018."

These genetics are qualified for the USA ONLY.



Outback MS Flash Dancer 122E,  
dam of Lot 40

Notta 151A Kat 202E,  
dam of Lot 41



110B Chilkoot 301F, sire of Lot 42 & 43

Outback Ms Flash Dancer 122E,  
dam of Lot 42



Notta 13Z Photo-Finish 208D,  
dam of Lot 43



## 42 **THREE CONVENTIONAL EMBRYOS**

Selling one package of three IVF embryos.

SPOTS N SPROUTS BART 110B  
110B CHILKOOT 301F  
NOTTA 300X THETA 11B  
NOTTA 101Y BARCODE 113B  
OUTBACK MS FLASH DANCER 122E  
RAVENWORTH ACADIA 112B

SIX STAR 82U ROYAL FLESH 101Y  
SPOTS 'N SPROUTS 3R  
RIVER HILL 12X ZAAAR 7Z  
STAR BANK SILKEN 83S

**Consigned by Notta Ranch, Neilburg, Saskatchewan, Canada**

Guarantee of one pregnancy when implanted by a certified technician  
This combination is a guaranteed "Show Stopper" with guaranteed color pattern. Never before has this combination been put together and offered to the public. This pairing is what is Notta Ranch, itself, is implanting this spring for our recipient herd ... These embryos will, no doubt, put you at the forefront of the breed.

These genetics are qualified for the USA ONLY.

## 43 **THREE CONVENTIONAL EMBRYOS**

Selling one package of three IVF embryos.

SPOTS N SPROUTS BART 110B  
110B CHILKOOT 301F  
NOTTA 300X THETA 11B  
UNEEDA ZAPPER 13Z  
NOTTA 13Z PHOTO-FINISH 208D  
NOTTA 15R PHOTO-FINISH 4Z

UNEEDA WALTER 21W  
MISTY FRITZ OF P.A.R.  
A & W 15R  
NOTTA PHO-FINISH 54P

**Consigned by Notta Ranch, Neilburg, Saskatchewan, Canada**

Guarantee of one pregnancy when implanted by a certified technician  
The Photo-Finish cow family is known for producing champions globally for decades. 208D was Canadian National Reserve Champion Female as a first calf heifer. Beaten only by a mature cow with calf at side breed by Notta Ranch carrying the same cow family. We chose Chilkoot to sire these embryos genetic diversity, his correctness, clean and sharp front end and let's not forget his clean front end gives him incredible eye appeal.

These genetics are qualified for the USA ONLY.





Notta 1B, Hawkeye 444E,  
Grand Champion Bull, 2019 Agribition

## SEMEN

### 44A&B NOTTA 1B HAWKEYE 444E

CANADIAN# 7465 | 01.02.17 | 100% SPECKLE PARK | MALE

UNEEDA ZAPPER 13Z  
CAJA ZEPPILIN 1B  
NOTTA 60 W PHOTO-FINISH 1 Z  
  
PRAIRIE HILL JOHN WAYNE 50S  
NOTTA 50S JANETTE 5W  
NOTTA PRETENDER 64P

UNEEDA WALTER 21W  
MISTY FRITZ OF P.A.R 13M  
RIVER HILL 26T WALKER 60W  
NOTTA PHO-FINISH 54P  
PRAIRIE HILL DURMAX 93N  
PRAIRIE HILL NABOB 50N  
STAR BANK LACERTA 68L  
STAR BANK 64L

Consigned by Notta Ranch, Neilburg, Saskatchewan, Canada

LOT 44A - selling 10 units of Notta 1B Hawkeye 444E semen.

LOT 44B - selling 10 units of Notta 1B Hawkeye 444E semen.

Champion of the World 2018 and recently crowned the 2019 Canadian National Grand Champion Overall Bull, Notta 1B Hawkeye 444E, produces outstanding calves with extra added muscle shape and proves that this bull will be forever influential in the Speckle Park breed. He is not a fluke, Hawkeye is created from a cow family that have been champions from day one. Based off of his perfect set of feet and legs, he is extremely wide based and with all that power he is still well balanced. The breeding potential for this young sire is endless. A true performance bull that you can immediately see from a far.

These genetics are qualified for the USA ONLY.



## **45A&B** **NOTTA 110B CHILKOOT 301F**

CANADIAN# 863 | 01.22.18 | 100% SPECKLE PARK | MALE

SPOTS N SPROUTS BART 110B CAN 5066

NOTTA 300X THETA 11A CAN 4256

**LOT 45A - selling 10 units of Notta 110B Chilkoot 301F semen.**

**LOT 45B - selling 10 units of Notta 110B Chilkoot 301F semen.**

The total package! Chilkoot is a carcass orientated breeding bull with raw ultrasound data in the top 10% of the breed. This bull has style and eye appeal, the ability to color mark any breed and along with his confirmation we know he won't disappoint. Chilkoot has the ability to move out easy and efficiently cover ground to breed a large set of females. His performance will put your program at the top of any bred.

These genetics are qualified for the USA ONLY.

**Consigned by Notta Ranch, Neilburg, Saskatchewan, Canada**



## SEMEN

### 46A&B NOTTA 110B HOT TOPIC 305E

CANADIAN# 8006- PB | 02.18.17 | 100% SPECKLE PARK | MALE

STAR BANK 64R REMEDY 9W	NOTTA ROMEO 64R
SPOTS 'N SPROUTS BART 110B	STAR BANK 36R
SPOTS 'N SPROUTS 2W	STYALS LIGHTNING LADD 14P
	STYALS MISS RKW 8N
SPOTS 'N SPROUTS NEFROM 101N	PRAIRIE HILL ENTICER 89G
STAR BANK THETA 42T	SPOTS 'N SPROUTS 6A
JANETTE OF P.A.R. 44H	P.A.R. LITTLE EDDIE II 93E
	PUSSY KAT II OF P.A.R. 11D

**LOT 46A - selling 10 units of Notta 110B Hot Topic 305E semen.**

**LOT 46B - selling 10 units of Notta 110B Hot Topic 305E semen.**

This smooth made, easy moving, correct herd sire makes his way into this offering with his out cross genetic potential. He possesses the ability to color mark with a Speckle Park pattern 100%. His dam, Star Bank Theta 42T, had a very successful show career and with maternal siblings also returning to the donor pen at a young age.

These genetics are qualified for the USA ONLY.

**Consigned by Notta Ranch, Neilburg, Saskatchewan, Canada**



**AVULA**  
S A F A R I S



**VALUED AT \$8,300.00**

**47**

## **5 DAY SOUTH AFRICA SAFARI FOR 2 HUNTERS**

MARCH 2020 – OCTOBER 2020

- 1 Blesbok, Brown or Impala, Trophy (Per Hunter)
- 1 Springbok – Common, Trophy (Per Hunter)
- 1 Warthog, Trophy (Per Hunter)

Accommodations for Hunter includes: Private en-suite, three home cooked meals daily, snacks, local beers, local wines (red & white), soft drinks, daily maid service in your suite, daily laundry service, lodge staff service, professional hunter (Licensed PH-Guide), tracker, skinners, field dressing, caping, trophy pick-up service by local taxidermist for processing.

Additional Days, Hunters, Non-Hunters & Trophies can be added off the Price List  
Must commit to two hunters, cannot be transferred or sold, Donation has no monetary value  
[www.avulasafaris](http://www.avulasafaris) | [nancy@avulasafaris.com](mailto:nancy@avulasafaris.com) | 845.791.0595



The **POWER** is in the **BLOOD**

Vegas ALL BREED

SALE

Coleman Donna 504

**SATURDAY, DECEMBER 7, 2019**

BELLAGIO HOTEL & CASINO LAS VEGAS, NEVADA

Contact any of the AB365 team ...

**AB365**  
ALLBREEDS365.COM

SALE MANAGEMENT

Sales Representative Kiley McKinna

Sales Representative Randall O. Ratliff

International Affairs P.J. Budler

| 402.350.3447

| 615.330.2735

| 682.597.0380

| MCMarketingsales@aol.com

| Randy@rrmktg.com

| PJBudler@gmail.com



**SAV Rairdance  
6848**



**SAV America 8018**



**Coleman Donna 714**



**Coleman Bravo**



**SAV President  
6847**



**Coleman Charlo 0256**

**5 Opportunities To Invest In  
The Legendary Donna Cow Family!**

**IT'S** with great anticipation and excitement to have this lot highlighting the Angus portion of this elite sale with one of the most prolific, proven and profitable cow families in the history of the breed! It's hard to know where to start when describing the "Donna" cow family's lasting impact upon the Angus breed and scores of breeding programs across North America. That said, on offer for your appreciated appraisal is three exceptional lots of rarity! First, half embryo interest and no possession with option to double and take all, in the donor herself, Coleman Donna 504, two masterfully created open heifer's by '504' (Coleman Donna 986 & Coleman Donna 9150) and two heifer pregnancies out of '504' and by none other than Coleman Charlo 0256, the paternal grandsire of SAV America 8018, the \$1,887,500 world record bull. Folks, these lots not only epitomize genetic predictability but, the stature and prowess of the Coleman Angus program! The '504' cow is simply a breeding masterpiece - she has been a standout since birth and is the youngest direct daughter of '714' ever flushed in the storied Coleman Angus program. To quote Larry Coleman direct, "point blank, we feel 504 has as much potential as any female we have ever raised." The profoundness within that statement is worthy of considering, this is a direct daughter of the legendary 'Donna 714' cow that has single handily been responsible for generating north of \$3,000,000 in progeny to date, which includes the \$900,000 valued Montana record setting bull Coleman Bravo 6313 that is a three-quarter's sibling to the heifer pregnancies on hand. The bottom-line is, the opportunity to invest in a cow family that's help set the Angus breed's standard only comes along once in a generation, so make December 7th, 2019 your day to make history!

**For further details about these respective lots, please contact Larry Coleman direct at 406.240.2751 or any trusted member of the sales team.**

## *Coleman Angus Ranch*

Larry & Dee Coleman | Home - 406.644.2697 | Cell - 406.240.2751  
40067 Morris Road, Charlo, Montana 59824 | colemanangus@blackfoot.net | www.colemanangus.com



Bellagio Hotel & Casino  
Las Vegas, NV



**SATURDAY, DECEMBER 7, 2019**  
 BELLAGIO HOTEL & CASINO | LILY BAR & LOUNGE | LAS VEGAS, NEVADA

*Vegas* ALL BREED SALE