



# TEXAS TRADITION

01.25.18 5:30 p.m. at the Ranch, near Bridgeport, TX

Morris

# TEXAS TRADITION

01.25.18 5:30 p.m. at the Ranch, near Bridgeport, TX

## Schedule |

Wednesday, January 24th

1:00 p.m. Cattle available for viewing

Thursday, January 25th

Cattle available for viewing

4:30 p.m. Complementary Meal

5:30 p.m. Stowers Limousin Texas Tradition IV  
Production Sale

## Sale Day Phones |

Jason Gaston .....817.247.8011  
Randy Ratliff .....615.330.2735  
Ken Holloway .....580.581.7652  
Mark Smith .....515.229.5227  
Kiley McKinna .....402.350.3447

## Auctioneer |

C.K. "Sonny" Booth .....918.533.5587



Scott, Donna & Lauren Stowers

940.644.2747 | Scott cell: 940.577.1300 | Docstowers10@gmail.com

430 CR 1326, Bridgeport, TX 76426 | www.stowerslimousin.com

Jason Gaston, Ranch Manager | 817.247.8011 | jasongaston85@gmail.com

## Selling 33.5 Lots | Registered Limousin & Lim-Flex

1/2 Proven Donor      4 Cow/Calf Pairs      3 Herd Sire Prospects  
7 Bred Heifers      12 Open Heifers      6 lots as 24 Embryos  
Semen packages on Riverstone Crown Royal

## Sale Accommodations |

La Quinta Inn & Suites.....940.683.2040  
2000 10th St., Bridgeport, TX 76426

Quality Suites .....940.683.5777  
2302 10th St., Bridgeport, TX 76426

## Watch or Bid Live |

The sale can be viewed and bids can be accepted through [www.dvauction.com](http://www.dvauction.com)



## Lone Star Shoot-Out



The Lone Star Shoot Out is a heifer futurity held during the junior heifer show at the Fort Worth Stock Show. The Shoot-out is sanctioned by the Texas Limousin Association and is funded by TLA members who sell and nominate heifers. The purse has grown from \$3,400 in 2012 to \$7,000 in 2014 and now has a guaranteed purse of \$10,000. The purse is prorated through the classes based on number of entries first place in each class will receive \$500 the Champion and Reserve will receive a bonus in addition to class premiums. Every exhibitor will receive a check to be determined once entries are received. The Shoot-out is open to all 4-H and FFA students in Texas. Rules for exhibition are in accordance with those printed in the Fort Worth Stock Show premium book. Visit the TLA website or contact the TLA office to locate a participating breeder. Heifers must be purchased no later than November 1, 2018. Heifers must also have been state validated, check with your local County Extension Agent to obtain dates and location of validation in your area.

## Sale Consultants |



American Cattle Services.....580.581.7652  
Kenholloway44@gmail.com



Grassroots, Mark Smith .....515.229.5227  
grgenetics@aol.com



Kiley McKinna .....402.350.3447  
mcmarketingsales@aol.com

## Sale Management |



Randall O. Ratliff, 615.330.2735  
Randy@RRMktg.com [www.RRMktg.com](http://www.RRMktg.com)  
PO Box 60097, Nashville, TN 37206

## Sale Terms & Agreements |

**GUARANTEE ...** All cattle sell under the standard guarantee of the North American Limousin Foundation EPDs ... EPDs are current as of August 2017.

**TERMS & CONDITIONS ...** Terms of the sale are cash unless satisfactory credit arrangements have been made prior to sale. A representative will be on hand sale day if your wishes are to insure your purchases. Please note: The sale manager is only an agent for the seller and has no responsibility other than those involved in conducting the sale. All persons who attend the sale do so at their own risk. Neither the sale manager nor Stowers Limousin assume liability, legal or otherwise for any accidents which may occur.

**SIGHT-UNSEEN PURCHASE AGREEMENT ...** If you are unable to attend the sale and want to speak with anyone involved with the sale, please don't hesitate to call. The marketing agents, owners or manager will provide you with a complete satisfaction guarantee on the cattle selling.

**TRUCKING ...** A trucking company will be on hand sale day to assist with any trucking needs. The Stowers family appreciates your business and will see to it that the cattle will be delivered to several central locations to accommodate anyone who lives throughout the US and Canada.

**FINANCING ...** For financing options, contact Jason Gaston at 817.247.8011 or R&R Marketing Company at 615.330.2735.

**PAYMENT ...** All cattle must be paid for immediately following the conclusion of the sale.

## Airports |

Dallas Love Field is 72 miles to Bridgeport. Dallas-Fort Worth is 52 miles to Bridgeport. Oklahoma City Will Rogers is 155 miles to Bridgeport.

## Sale Order & Supplemental Information |

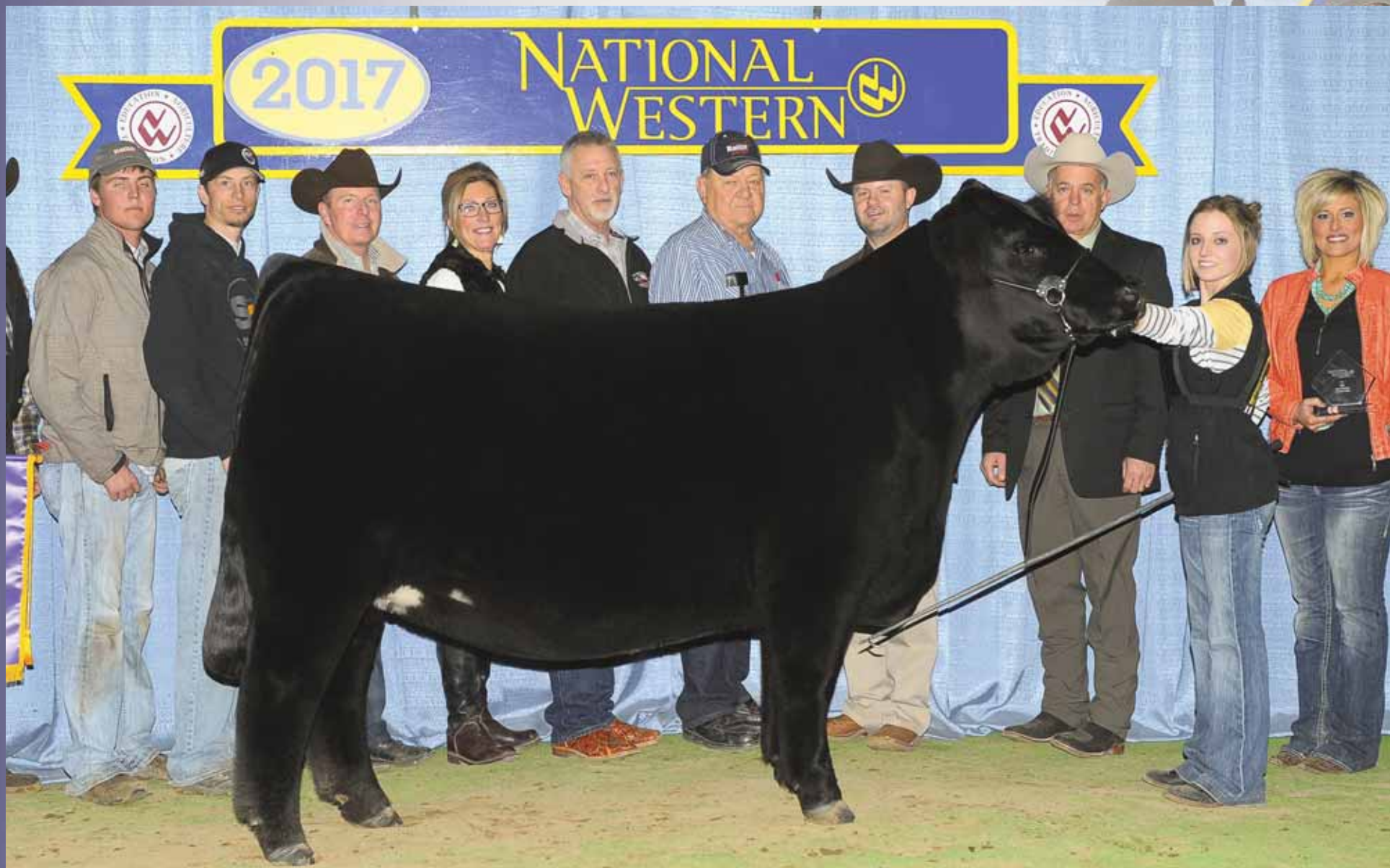
The sale order and supplemental information will be posted at [www.RRMktg.com](http://www.RRMktg.com) and [www.stowerslimousin.com](http://www.stowerslimousin.com) for your convenience Wednesday, January 24th.

## Directions |

**FROM GAINESVILLE:** Take FM 51 South to Decatur. In Decatur, take Hwy. 380 West toward Bridgeport. Half-way between Decatur & Bridgeport you will take FM 1655 North. You will drive exactly 2 miles and the Stowers Limousin sign and entrance is on the left.

**FROM FORT WORTH:** Go North to Hwy. 287. Take Hwy. 287 to Decatur. In Decatur, take Hwy. 380 West toward Bridgeport. Half way between Decatur & Bridgeport you will take FM 1655 North. You will drive exactly 2 miles and the Stowers Limousin sign and entrance is on the left.

*\*\*Heifers less than 50% Lim-Flex will show as ORB in all Texas major shows.  
They will still be eligible for the Lone Star Shoot-Out.*



| Double Supreme Champion Female,  
Ring A & Ring B, 2016 KSU AGR Kick Off Show

| Double Reserve Supreme Champion Female,  
2016 Steers & Stripes Steer & Heifer Show

| Supreme Champion Overall Female & Champion Limousin  
Heifer, 2016 Milan FFA Jackpot

| Supreme Champion Overall Female & Champion Limousin  
Heifer, 2016 NWMSU AGR Green & Gold Show  
and NWMSU AGR Green & Gold Show

| Grand Champion Female,  
2016 National Junior Limousin Show

| Reserve Grand Champion Female,  
2016 All-American Limousin Futurity

| Supreme Champion Female,  
20116 Kansas State Fair

| Supreme Champion Female,  
2016 Kansas Junior Livestock Show

| Grand Champion Female,  
Junior & Open Divisions, 2016 American Royal

| Supreme Champion Female,  
2016 North American International Livestock Exposition

| Grand Champion Limousin Female,  
2017 National Western Stock Show

Genetics from one  
of the all-time greatest  
Purebred Limousin females  
to ever exist!!



| MAGS Aviator, sire of Lot 7 embryos |

These future calves certainly have a bright future for their new owner. They represent one of the most progressive matings you could ever invest in. A full sibling to these embryos recently sold to Sarah Sullivan of Dunlap, Iowa and will be campaigned heavily throughout the year 2018.

Aviator is the syndicated son of MAGS Winston, the high seller at the 2014 Magness sale, and his combination of stylish phenotype and tremendous performance makes him a must try. Homozygous black and Homozygous polled, he offers a super structure, calving-ease and carcass in one package.

This homozygous black female comes from some of the best Limousin genetics in the breed. Commonly referred to as the 'Ratlift heifer,' she was champion at nearly every show she has shown in and was the first Limousin to win Supreme heifer at NAILE. She is sired by TMCK Durham Wheat 6030X. We are proud to have purchased half embryo interest in Riverstone Charmed. In her short career she has been honored with these titles as well, National Junior Heifer Show Grand Champion Female, Reserve Grand Champion Female at the All American Futurity, Double Supreme Champion Female in Both Ring A & Ring B at the KSU AGR Kick Off Show, Double Reserve Supreme Champion Female at the 2016 Steers & Stripes Steer & Heifer Show, Champion Limousin Heifer and Supreme Champion Overall Female 2016 Milan FFA Jackpot, Champion Limousin Heifer and Supreme Champion Overall Female 2016 NWMSU AGR Green & Gold Show NWMSU AGR Green & Gold Show.

So invest wisely and consider one of the hottest matings to come into our breed in a long time.



### 3 Embryos

79% Limousin | Double Polled | Double Black



### 4 Embryos

79% Limousin | Double Polled | Double Black

|                         |                     |
|-------------------------|---------------------|
| MAGS WINSTON            | BT CROSSOVER 758N   |
| MAGS AVIATOR            | MAGS STRAWBERRY     |
| MAGS XTRA REST          | DHVO DEUCE 132R     |
|                         | MAGS UNREST         |
| TMCK DURHAM WHEAT 6030X | DHVO DEUCE 132R     |
| RIVERSTONE CHARMED      | MAGS STRAWBERRY PIE |
| HSF YOUR FANTASY        | MAGS WAR ADMIRAL    |
|                         | HSF TINKERBELL      |

|      | SIRE  | DAM   |
|------|-------|-------|
| CEB  | 13    | 5     |
| BW   | -0.3  | 3.4   |
| WW   | 67    | 66    |
| YW   | 94    | 92    |
| MA   | 25    | 30    |
| CEM  | 7     | 5     |
| SC   | 0.5   | 1.02  |
| ST   | 4     | 5     |
| DOC  | 28    | 16    |
| CW   | 25    | 29    |
| REA  | 0.34  | 0.32  |
| YG   | 0.23  | 0.01  |
| MARB | 0.37  | -0.1  |
| SMTI | 61.65 | 46.11 |



| Riverstone Crown Royal |

## SEMEN PACKAGES

### Riverstone Crown Royal

%Limousin (95) Bull | DPolled/DBlack | 02.01.15 | CSM 51C | CPM 4077450



|                         |                      |
|-------------------------|----------------------|
| DHVO DEUCE 132R         | GPFF BLAQUE RULON    |
| TMCK DURHAM WHEAT 6030X | AMY JO DHAN 20L      |
| MAGS STRAWBERRY PIE     | TNUH BLUE PRINT 245H |
|                         | MAGS PIE IN THE SKY  |
| MAGS WAR ADMIRAL        | MAGS SAVAGE          |
| HSF YOUR FANTASY        | MAGS REMBRANDT       |
| HSF TINKERBELL          | CARROUSELS NASDAQ    |
|                         | NP VIDALIA 164H      |

— BW 88 lbs VW — YW —

|      | EPD's | %Rank |
|------|-------|-------|
| CED  | 6     | 60    |
| BW   | 2.1   | 65    |
| YW   | 73    | 20    |
| MA   | 89    | 60    |
| CEM  | 32    | 15    |
| SC   | 3     | 85    |
| ST   | 1.02  | 25    |
| DOC  | 5     | 55    |
| CW   | 16    | 50    |
| REA  | 20    | 70    |
| YR   | 0.45  | 50    |
| MARB | 0.01  | 90    |
| SMTI | -0.16 | 60    |
|      | 45.71 | 60    |

Selling Semen Packages 40 units for \$1500

Riverstone Crown Royal was the top selling bull in the spring Riverstone Bull Sale and was purchased with our good friends at P Bar S Ranch. This son of TMCK Durham Wheat has created a tremendous amount of interest in our breed. His sire, TMCK Durham Wheat, is a son of the National Champion Limousin bull DHVO Deuce 132R. Durham Wheat is now one of the leading sires at Stowers Limousin and we are excited to see how his influence will continue to enhance our program. When he was shown, Durham Wheat was soft in his pastern, extreme in his foot size and very fluid in his movement. He was commended for his unique look and style that he had from the side profile. Most of all, for a purebred bull, he was a freak in that he was very deep in his flank and extreme in his depth of body and capacity. He was a division winner at the 2011 National Western Stock Show and was the 2012 Canadian National Champion bull. His full sister is the popular show female, Riverstone Charmed 50C. Riverstone Crown Royal's calves are just now in the market place and one of the finest heifers will highlight this sale. Breeders that invested in his semen have nothing but good things to say about his calves. The are structurally sound, extreme up through their head and neck and have the pattern and design that you would expect. Buy with the utmost confidence as you consider semen to influence your program with Riverstone Crown Royal.

*Owned with our good friends at ...*

## Riverstone Cattle Co.

**Tim and Kim Mathews & Family**  
403.556.5744 • tim@riverstonecattle.com  
Box 19, Site 5, RR#2  
Olds, Alberta Canada T4H 1P3



**Paul Sisemore, Owner**  
Manager: Elgin Elmore, 918.346.2438  
psisemore@custofab.com  
11720 Overlook Dr., Sand Springs, OK 74063  
www.pbarsranch.com



| SSTO Ellen 7860E, Lot 3 |



| SBLX Zaahida, dam of Lot 3 |

## SSTO Ellen 7860E ET

PB Limousin (87) Cow | DPoll/DBlack | 03.29.17 | SSTO 7860E | NPF 2130365



TMCK DURHAM WHEAT 6030X DHVO DEUCE 132R  
 RIVERSTONE CROWN ROYAL MAGS STRAWBERRY PIE  
 HSF YOUR FANTASY MAGS WAR ADMIRAL  
 HSF TINKERBELL  
 MAGS WINSTON BT CROSSOVER 758N  
 SBLX ZAAHIDA MAGS STRAWBERRY  
 MAGS MANUELA EXLR LIMITED EDITION 765J  
 AUTO CITY NIGHTS 214H



**GE-EPDs**  
 North American Limousin Foundation

|             | EPD's | %Rank |
|-------------|-------|-------|
| <b>CED</b>  | 10    | 25    |
| <b>BW</b>   | 1.5   | 55    |
| <b>WW</b>   | 73    | 20    |
| <b>YW</b>   | 96    | 50    |
| <b>MA</b>   | 32    | 10    |
| <b>CEM</b>  | 6     | 55    |
| <b>SC</b>   | 0.64  | 55    |
| <b>ST</b>   | 4     | 75    |
| <b>DOC</b>  | 22    | 30    |
| <b>CW</b>   | 22    | 70    |
| <b>REA</b>  | 0.4   | 60    |
| <b>YG</b>   | 0.04  | 95    |
| <b>MARB</b> | 0.1   | 35    |
| <b>SMTI</b> | 55.06 | 35    |

You won't find a better profiling female than this one. She has it all – attractive, soft in her lines, big middle and extremely sound in her feet and legs. SSTO 7860E is a heterozygous polled and double black female. She ranks in the top 10% of the breed for MK. This female's dam is one of the great ones. She is a 75% Lim-Flex polled and homozygous black daughter of the now deceased MAGS Winston. Winston is a son of BT Crossover from the \$98,000 valued donor MAGS Strawberry. Her sons and daughters continue to win the shows and top the market. SSTO 7860E is sired by Riverstone Crown Royal. He was the top selling bull in the spring Riverstone bull sale and is owned by us and P Bar S Ranch. This son of TMCK Durham Wheat has created a tremendous amount of interest in our breed.

## SSTO Erin 7853E

Lim-Flex (75) Cow | DPoll/DBlack | 04.10.17 | SSTO 7853E | LFF 2127945



TMCK DURHAM WHEAT 6030X DHVO DEUCE 132R  
 RIVERSTONE CROWN ROYAL MAGS STRAWBERRY PIE  
 HSF YOUR FANTASY MAGS WAR ADMIRAL  
 HSF TINKERBELL  
 G A R PREDESTINED B/R NEW DESIGN 036  
 SBLX ZULTRA G A R EXT 4206  
 SBLX ULTRA 4566U GPF BLAQUE RULON  
 MAGS REMBRANDT



|             | EPD's | %Rank |
|-------------|-------|-------|
| <b>CED</b>  | 6     | 70    |
| <b>BW</b>   | 1.2   | 50    |
| <b>WW</b>   | 62    | 60    |
| <b>YW</b>   | 86    | 70    |
| <b>MA</b>   | 29    | 20    |
| <b>CEM</b>  | 5     | 70    |
| <b>SC</b>   | 0.94  | 25    |
| <b>ST</b>   | 4     | 75    |
| <b>DOC</b>  | 15    | 65    |
| <b>CW</b>   | 19    | 80    |
| <b>REA</b>  | 0.46  | 50    |
| <b>YG</b>   | -0.06 | 80    |
| <b>MARB</b> | 0.22  | 20    |
| <b>SMTI</b> | 57.12 | 30    |

SSTO 7853E is a 75% Lim-Flex Riverstone Crown Royal daughter. Her dam, SBLX Zultra, is a 50% Lim-Flex daughter of GAR Predestined back to a daughter of GPF Blaque Rulon from the \$40,000 valued MAGS Rembrandt. This heifer is bred well and has a strong EPD profile. Her marbling and milk EPDs both rank in the top 20% of the breed. She is double black and heterozygous polled.



| Riverstone Crown Royal,  
sire of Lot 5 embryos |



| SSTO Watercolors 9450W, dam of Lot 5 embryos |



| MAGS Aviator,  
sire of Lot 6 embryos |



| SSTO Watercolors 9450W, dam of Lot 6 embryos |

## 2 Embryos

PB Limousin | Polled | Double Black



TMCK DURHAM WHEAT 6030X  
RIVERSTONE CROWN ROYAL  
HSF YOUR FANTASY  
MAGS SAVAGE  
SSTO WATERCOLORS 9450W  
CARROUSELS PINA COLADA

DHVO DEUCE 132R  
MAGS STRAWBERRY PIE  
MAGS WAR ADMIRAL  
HSF TINKERBELL  
GPFF BLAQUE RULON  
MAGS MANDA  
AUTO BLACK DAKOTA 129J  
ELMW GINNIE P58G

|      | SIRE  | DAM   |
|------|-------|-------|
| CED  | 6     | 4     |
| BW   | 2.1   | 2.7   |
| WW   | 73    | 58    |
| YW   | 89    | 77    |
| MA   | 32    | 28    |
| CEM  | 3     | 6     |
| SC   | 1.02  | 0.5   |
| ST   | 5     | 4     |
| DOC  | 16    | -2    |
| CW   | 20    | 15    |
| REA  | 0.45  | 0.3   |
| YG   | 0.01  | -0.08 |
| MARB | -0.16 | -0.09 |
| SMTI | 45.71 | 44.69 |

Selling two purebred, double polled and double black embryos from the proven pedigree, Riverstone Crown Royal and SSTO Watercolors 9450W. Riverstone Crown Royal was the top selling bull in the spring Riverstone Bull Sale and was purchased with our good friends at P Bar S Ranch. This son of TMCK Durham Wheat has created a tremendous amount of interest in our breed. His sire, TMCK Durham Wheat, is a son of the National Champion Limousin bull DHVO Deuce 132R. His full sister is the popular show female, Riverstone Charmed 50C. A maternal sister to PBRs Your the One out of the highly used sire of champions, MAGS Savage. SSTO Watercolors was a champion at the 2011 Fort Worth Stock Show and Rodeo, her picture doesn't lie, her show ring presence is surpassed by very few. She is extremely eye appealing, straight lined and thick ended. Being a direct daughter of the P Bar S and Edwards Limousin donor, Carrousel's Pina Colada increases her value quite a bit to us. We feel that anything tracing back to that dominant cow family adds a level of predictability that we can bank on. Like her maternal sister, she is homozygous black and we look to her to excel as a purebred foundation female. This blending of excellence is sure to make an impression in your herd.

## 5 Embryos

75% Lim-Flex | Polled | Homozygous Black



MAGS WINSTON  
MAGS AVIATOR  
MAGS XTRA REST  
MAGS SAVAGE  
SSTO WATERCOLORS 9450W  
CARROUSELS PINA COLADA

BT CROSSOVER 758N  
MAGS STRAWBERRY  
DHVO DEUCE 132R  
MAGS UNREST  
GPFF BLAQUE RULON  
MAGS MANDA  
AUTO BLACK DAKOTA 129J  
ELMW GINNIE P58G

|      | SIRE  | DAM   |
|------|-------|-------|
| CED  | 13    | 4     |
| BW   | -0.3  | 2.7   |
| WW   | 67    | 58    |
| YW   | 94    | 77    |
| MA   | 25    | 28    |
| CEM  | 7     | 6     |
| SC   | 0.5   | 0.5   |
| ST   | 4     | 4     |
| DOC  | 28    | -2    |
| CW   | 25    | 15    |
| REA  | 0.34  | 0.3   |
| YG   | 0.23  | -0.08 |
| MARB | 0.37  | -0.09 |
| SMTI | 61.65 | 44.69 |

Don't miss this unique opportunity to get your hands on truly elite genetics. We are offering five 75% Lim-Flex, polled and homozygous black embryos from the ever popular mating, MAGS Aviator and SSTO Watercolors 9450W. Aviator is the syndicated son of MAGS Winston, the high seller at the 2014 Magness sale, and his combination of stylish phenotype and tremendous performance makes him a must try. Homozygous black and Homozygous polled, he offers a super structure, calving-ease and carcass in one package. SSTO Watercolors is a direct daughter of the P Bar S and Edwards Limousin donor, Carrousel's Pina Colada and increases her value quite a bit to us. We feel that anything tracing back to that proven cow family adds a level of sureness that we can trust. This mating has unmatched genetic value, here's your chance.





# TEXAS TRADITION





| SBLX Xtra Special |



| Daughter, LSTO 609D  
Owned by Emma Tittor



| Daughter, LSTO Angel 3853A  
Owned by Charles Linhart



| Daughter, SSTO All Yours 311A  
Owned by Owen Cattle Co.



| Son, LSTO Best Effort 4833B  
Owned by Lonely Valley



| Daughter, SSTO Daphne 658D  
Owned by Lana Tittor

## SBLX Xtra Special

PB Limousin (100) Cow | Polled/HBlack | 01.01.10 | SBLX 214X | NPF 1963581

|                           |                           |
|---------------------------|---------------------------|
| GPF BLAQUE RULON          | BLACK DIAMOND             |
| DHVO DEUCE 132R           | QUAIL RUN RAMONA BP       |
| AMY JO DHAN 20L           | BLACK CAT DHAN 152G       |
|                           | GPF AMBER JO              |
| EXLR LIMITED EDITION 765J | EXLR POLLED BENCHMARK709G |
| MAGS MANUELA              | WULFS GLENDA 7021G        |
| AUTO CITY NIGHTS 214H     | COLE FIRST DOWN 46D       |
|                           | MISS WOLFETTE 9049X       |

BF: 0.25 | REA: 15.40 | IMF: 2.29

|      | EPD's | %Rank |
|------|-------|-------|
| CED  | 7     | 50    |
| BW   | 4.2   | 95    |
| WW   | 75    | 10    |
| YW   | 102   | 20    |
| MA   | 24    | 60    |
| CEM  | 5     | 60    |
| SC   | 1     | 15    |
| ST   | 9     | 30    |
| DOC  | 26    | 15    |
| CW   | 33    | 20    |
| REA  | 0.46  | 45    |
| YG   | -0.16 | 65    |
| MARB | -0.19 | 55    |
| SMTI | 46.85 | 45    |

**GE-EPDs**  
North American Limousin Foundation

Selling half embryo interest and no possession.

AI'd 03.01.17 to MAGS Aviator; safe.

This female is a past San Antonio Grand Champion. Her perfectly engineered skeleton and stunning maternal profile made her not only a 'can't miss me' female in the show ring, it also has made her one of the highest valued young donors in the breed at \$106,000. The DHVO Deuce/MAGS Manuela mating has produced some of the finest cattle to set foot on ground, and SBLX Xtra Special is no exception. This maternal sister to SBLX Znote, is the dam of lots 1, 2 and 3 in our 2015 Texas Traditions sale. Already, she has recorded an impressive WW ratio of 107 and YW ratio of 108 on 15 progeny. MAGS Manuela, arguably one of the superior cows to shape any breed and now that she is deceased her limited progeny around the country will have sustainable value as time goes on. SBLX Xtra Special has proven herself time and time again at Stowers Limousin. She has produced countless champions and breed top sellers. She is the leading donor for Stowers Limousin and the ONLY reason they are offering half embryo interest is to highlight this annual sale.



## SSTO Elusive 723E ET

Lim-Flex (50) Cow | HPolled/HBlack | 02.28.17 | SSTO 723E | LFF 2129536



S A V BRILLIANCE 8077  
PVF INSIGHT 0129  
PVF MISSIE 790

DHVO DEUCE 132R  
SBLX XTRA SPECIAL  
MAGS MANUELA

S A V BISMARCK 5682  
S A V BLACKCAP MAY 5270  
P V F NEW HORIZON 001  
P V F MISS RAPTOR 024  
GPFF BLAQUE RULON  
AMY JO DHAN 20L  
EXLR LIMITED EDITION 765J  
AUTO CITY NIGHTS 214H



**GE-EPDs**  
North American Limousin Foundation

|      | EPD's | %Rank |
|------|-------|-------|
| CEB  | 12    | 15    |
| BW   | 0.7   | 35    |
| WW   | 81    | 5     |
| YW   | 119   | 10    |
| MA   | 32    | 10    |
| CEM  | 7     | 35    |
| SC   | 1.05  | 20    |
| ST   | 8     | 35    |
| DOC  | 22    | 30    |
| CW   | 38    | 15    |
| REA  | 0.77  | 10    |
| YG   | -0.28 | 25    |
| MARB | 0.21  | 25    |
| SMTI | 64.34 | 10    |



SSTO Elusive 723E is a homozygous black, homozygous polled daughter of PVF Insight 0129. Her dam, SBLX Xtra Special is one of the highest valued donors in the breed. This female has an impressive set of EPD's. Her weaning weight EPD ranks in the top 5% of the breed as well as yearling weight and milk in the top 10%. This one has everything to make an exceptional donor- rib, length of body and bone. She has an almost perfect hind leg structure and we love her stylish profile.



| PVF Insight 0129, sire of Lot 8 |



## 4 Embryos

PB Limousin | Double Polled | Double Black

## 4 Embryos

PB Limousin | Double Polled | Double Black



TMCK DURHAM WHEAT 6030X  
RIVERSTONE CROWN ROYAL  
HSF YOUR FANTASY

DHVO DEUCE 132R  
SBLX XTRA SPECIAL  
MAGS MANUELA

DHVO DEUCE 132R  
MAGS STRAWBERRY PIE  
MAGS WAR ADMIRAL  
HSF TINKERBELL  
GPFF BLAQUE RULON  
AMY JO DHAN 20L  
EXLR LIMITED EDITION 765J  
AUTO CITY NIGHTS 214H

|      | SIRE  | DAM   |
|------|-------|-------|
| CEB  | 6     | 7     |
| BW   | 1.2   | 4.2   |
| WW   | 62    | 75    |
| YW   | 86    | 102   |
| MA   | 29    | 24    |
| CEM  | 5     | 5     |
| SC   | 0.94  | 1     |
| ST   | 4     | 9     |
| DOC  | 15    | 26    |
| CW   | 19    | 33    |
| REA  | 0.46  | 0.46  |
| YG   | -0.06 | -0.16 |
| MARB | 0.22  | -0.19 |
| SMTI | 57.12 | 46.85 |



| Riverstone Crown Royal, sire of Lot 9A & 9B embryos |

Here is a true sale highlight to invest in winning genetics. We are offering four purebred, double polled, double black embryos from the Riverstone Crown Royal/ SBLX Xtra Special 214X mating. Crown Royal is a son of TMCK Durham Wheat that has captured the attention of many for the Limousin breed. His sire, TMCK Durham Wheat, is a son of the National Champion Limousin Bull, DHVO Deuce 132R. His full sister is the popular show female, Riverstone Charmed 50C. A maternal sister to PBRs Your the One out of the highly used sire of champions, MAGS Savage. Xtra Special is a past San Antonio Grand Champion Female. Her perfectly engineered skeleton and stunning maternal profile made her not only a 'can't miss me' female in the show ring, it also has made her one of the highest valued young donors in the breed at \$106,000. The DHVO Deuce/MAGS Manuela mating has produced some of the finest cattle to set foot on ground, and Xtra Special is no exception. This maternal sister to SBLX Znote, is the dam of lots 1,2 and 3 in our 2015 Texas Traditions sale. Already, she has recorded an impressive WW ratio of 107 and YW ratio of 108 on 15 progeny. MAGS Manuela, arguably one of the superior cows to shape any breed, is the lead-off donor for our good friends and partners at Sugar Bush Cattle Inc., Allen, MI. If you're seeking genetics that hold the potential to create the next great one, invest in these embryos.



LLJB Absolute Style 3056A is the elite show female of Shelby Hennessy's from 2014 and top selling lot in the 2013 Linhart Limousin Fall Harvest Sale. She's flawless in her design and boasts a rare combination of structural correctness, angularity, rib shape and the stoutness that's needed to compete at the highest level. She is sired by the National Western Stock Show national champion Silveiras Style 9303 Angus sire. Her dam, MAGS Wassail is the donor female that staked claim to numerous championship titles. Absolute Style is homozygous polled and is one you have to appreciate for her impressive birth to yearling spread. A full sister to these three next lots was the top seller at the recent Linhart Limousin Fall sale. She sold for \$33,000 to The Hoge Family in Illinois.

## LLJB Absolute Style 3056A

Lim-Flex {50} Cow | HPolled/DBlack | 02.18.13 | LLJB 3056A | LFF 2036244



GAMBLES HOT ROD  
SILVEIRAS STYLE 9303  
SILVEIRAS ELBA 2520

DHVO DEUCE 132R  
MAGS WASSAIL  
MAGS MANDA

FAMOUS 7001  
CHAMPION HILL LADY 703  
TWIN VALLEY PRECISIONE 161  
D A R ELBA 55  
GPF BLAQUE RULON  
AMY JO DHAN 20L  
EXLR DAKOTA 353G  
MAGS JEWEL

|      | EPD's | %Rank |
|------|-------|-------|
| CED  | 12    | 10    |
| BW   | -0.4  | 20    |
| WW   | 53    | 75    |
| YW   | 79    | 65    |
| MA   | 22    | 75    |
| CEM  | 10    | 5     |
| SC   | 1.30  | 4     |
| ST   | 6     | 55    |
| DOC  | 17    | 45    |
| CW   | 16    | 75    |
| REA  | -0.09 | >95   |
| YG   | 0.08  | >95   |
| MARB | 0.34  | 15    |
| SMTI | 57.61 | 20    |



## SSTO Exceptional 7802E ET

Lim-Flex {50} Cow | HPolled/HBlack | 01.02.17 | SSTO 7802E | LFF 2116276



D A TRAVELER 004 703  
EF XCESSIVE FORCE  
CFLX MOLLYS IMAGE  
SILVEIRAS STYLE 9303  
LLJB ABSOLUTE STYLE 3056A  
MAGS WASSAIL

S A V 8180 TRAVELER 004  
ROSEWOOD ERICA 5010  
DHVO DEUCE 132R  
JCL PEPPERMINT  
GAMBLES HOT ROD  
SILVEIRAS ELBA 2520  
DHVO DEUCE 132R  
MAGS MANDA

|      | EPD's | %Rank |
|------|-------|-------|
| CED  | 12    | 15    |
| BW   | -0.8  | 15    |
| WW   | 65    | 45    |
| YW   | 96    | 50    |
| MA   | 24    | 65    |
| CEM  | 9     | 10    |
| SC   | 1.5   | 2     |
| ST   | 6     | 55    |
| DOC  | 14    | 70    |
| CW   | 21    | 70    |
| REA  | 0.08  | >95   |
| YG   | 0.17  | >95   |
| MARB | 0.23  | 20    |
| SMTI | 56.58 | 30    |



**GE-EPDs**  
North American Limousin Foundation

If you want the very best we have to offer here at Stowers Limousin- here's the one. SSTO Exceptional 7802E ET is beyond 'exceptional.' Her birth weight EPD ranks in the top 15% of the breed. She is a homozygous black, homozygous polled female sired by the powerful 2012 National Western Champion Bull, EF Xcessive Force. Xcessive Force goes back to progressive Angus sire, Traveler 004 and out of a great Deuce show heifer. This female's pedigree is simply loaded with power. She has the femininity and maternal look that will carry into her progeny for years. We admire her heaviness of bone, foot size and the softness of her pasterns when she's on the move.

## SSTO Expectation 7804E ET

Lim-Flex {50} Bull | HPolled/HBlack | 01.03.17 | SSTO 7804E | LFM 2116277



D A TRAVELER 004 703  
EF XCESSIVE FORCE  
CFLX MOLLYS IMAGE  
SILVEIRAS STYLE 9303  
LLJB ABSOLUTE STYLE 3056A  
MAGS WASSAIL

S A V 8180 TRAVELER 004  
ROSEWOOD ERICA 5010  
DHVO DEUCE 132R  
JCL PEPPERMINT  
GAMBLES HOT ROD  
SILVEIRAS ELBA 2520  
DHVO DEUCE 132R  
MAGS MANDA

**GE-EPDs**  
North American Limousin Foundation

|      | EPDs  | %Rank |
|------|-------|-------|
| CED  | 12    | 15    |
| BW   | -0.2  | 20    |
| WW   | 65    | 45    |
| YW   | 96    | 50    |
| MA   | 25    | 55    |
| CEM  | 8     | 20    |
| SC   | 1.5   | 2     |
| ST   | 6     | 55    |
| DOC  | 14    | 70    |
| CW   | 23    | 65    |
| REA  | 0.06  | >95   |
| YG   | 0.17  | >95   |
| MARB | 0.22  | 20    |
| SMTI | 56.21 | 30    |

SSTO Expectation 7804E is an EF Xcessive Force son. From a numbers standpoint, this 50% Lim-Flex, homozygous black and homozygous polled bull ranks in the top 20% of the breed for birth weight and marbling. These traits will make him a calving ease and carcass specialist in the pasture. He's got all the pieces to make his progeny standout in any scenario- he stands on a tremendous amount of bone, is super balanced on the profile and is incredibly smooth structured.

BW: 71 lbs.



## SSTO Eternity 7807E ET

Lim-Flex {50} Bull | HPolled/HBlack | 01.03.17 | SSTO 7807E | LFM 2116278



D A TRAVELER 004 703  
EF XCESSIVE FORCE  
CFLX MOLLYS IMAGE  
SILVEIRAS STYLE 9303  
LLJB ABSOLUTE STYLE 3056A  
MAGS WASSAIL

S A V 8180 TRAVELER 004  
ROSEWOOD ERICA 5010  
DHVO DEUCE 132R  
JCL PEPPERMINT  
GAMBLES HOT ROD  
SILVEIRAS ELBA 2520  
DHVO DEUCE 132R  
MAGS MANDA

**GE-EPDs**  
North American Limousin Foundation

|      | EPDs  | %Rank |
|------|-------|-------|
| CED  | 12    | 15    |
| BW   | -0.3  | 20    |
| WW   | 67    | 40    |
| YW   | 102   | 35    |
| MA   | 24    | 65    |
| CEM  | 9     | 10    |
| SC   | 1.5   | 2     |
| ST   | 6     | 55    |
| DOC  | 14    | 70    |
| CW   | 27    | 50    |
| REA  | 0.04  | >95   |
| YC   | 0.17  | >95   |
| MARB | 0.21  | 25    |
| SMTI | 56.52 | 30    |

SSTO Eternity 7807E ET is also an EF Xcessive Force son that is homozygous black and homozygous polled. This bull has it all stacked in his favor. He is stout made, extended in his lines and complete in his structure. His stylish presence will capture the attention of anyone that lays eyes on him. SSTO Eternity 7807E is bred for lean growth and will exceed in pounds yielded and carcass value. We love this bull's added shape, capacity and dimension.

BW: 75 lbs.



## SSTO Excel 7801E ET

Lim-Flex {50} Bull | DPolled/HBlack | 01.01.17 | SSTO 7801E | LFM 2116275



D A TRAVELER 004 703  
EF XCESSIVE FORCE  
CFLX MOLLYS IMAGE  
SILVEIRAS STYLE 9303  
LLJB ABSOLUTE STYLE 3056A  
MAGS WASSAIL

S A V 8180 TRAVELER 004  
ROSEWOOD ERICA 5010  
DHVO DEUCE 132R  
JCL PEPPERMINT  
GAMBLES HOT ROD  
SILVEIRAS ELBA 2520  
DHVO DEUCE 132R  
MAGS MANDA

**GE-EPDs**  
North American Limousin Foundation

|      | EPDs  | %Rank |
|------|-------|-------|
| CED  | 13    | 10    |
| BW   | -1.2  | 10    |
| WW   | 62    | 60    |
| YW   | 92    | 55    |
| MA   | 22    | 80    |
| CEM  | 8     | 20    |
| SC   | 1.5   | 2     |
| ST   | 6     | 55    |
| DOC  | 14    | 70    |
| CW   | 18    | 85    |
| REA  | 0.02  | >95   |
| YG   | 0.17  | >95   |
| MARB | 0.28  | 15    |
| SMTI | 57.49 | 25    |

Here is a 50% Lim-Flex EF Xcessive Force son out of the great LLJB Absolute Style 3056A cow. Xcessive Force was the 2012 National Western Champion Bull. He goes back to progressive Angus sire, Traveler 004 and is out of a great Deuce show heifer. Absolute Style is out of the National Western Stock Show National Champion, Silveiras Style 9303. SSTO 7801E has a powerful set of EPDS- his birthweight EPD ranks in the top 10% of the breed and marbling in the top 15%. He is the combination bull that has all the pieces to make a great herd sire prospect for any program. From the ground up this young bull is near perfect- he is big boned and soft in his pasterns. He is very appealing up through his front end, strong down his top and very square from his hooks to his pins.

BW: 71 lbs.





Morris

SBLX Znote is the 2014 National Junior Show champion female for our daughter, Lauren. With Texas being the host state, we wanted to exhibit the very best we could and we felt that with a MAGS Xyloid/MAGS Manuela heifer we would have a great foundation to work with. MAGS Xyloid saw the backdrop as either champion or reserve champion at the 2011 NAILE, 2012 NWSS, 2012 Fort Worth and the 2012 All-American Futurity. His valiant run at the Triple Crown was just the beginning of his historical journey. Just two years after walking out of the ring for the last time he was already proving himself as the runner-up Medal of Excellence award winning sire. The predictability of this power female's pedigree combined with her conformational correctness and substance, makes us excited for her future here at Stowers Limousin.

### SBLX Znote

PB Limousin {87} Cow | Polled/DBlack | 10.07.12 | SLBX 2743Z | NPF 2024421



|                           |                            |
|---------------------------|----------------------------|
| DHVO DEUCE 132R           | GPF BLAQUE RULON           |
| MAGS XYLOID               | AMY JO DHAN 20L            |
| BOHI RHONDA 314R          | EXLR NEW GENERATION 071M   |
|                           | DAVIS ROSETTA 9514         |
| EXLR LIMITED EDITION 765J | EXLR POLLED BENCHMARK 709G |
| MAGS MANUELA              | WULFS GLENDA 7021G         |
| AUTO CITY NIGHTS 214H     | COLE FIRST DOWN 46D        |
|                           | MISS WOLFETTE 9049X        |

|      | EPD's | %Rank |
|------|-------|-------|
| CED  | 8     | 40    |
| BW   | 4.2   | 95    |
| WW   | 57    | 60    |
| YW   | 86    | 50    |
| MA   | 24    | 60    |
| CEM  | 7     | 70    |
| SC   | 0.75  | 35    |
| ST   | 7     | 45    |
| DOC  | 33    | 4     |
| CW   | 28    | 35    |
| REA  | 0.08  | 95    |
| YG   | -0.02 | 90    |
| MARB | 0.13  | 25    |
| SMTI | 52.10 | 30    |



Morris

### SSTO Epic 7854E ET

Lim-Flex {44} Cow | DPoled/HBlack | 04.02.17 | SSTO 7854E | LFF 2130368



|                       |                           |
|-----------------------|---------------------------|
| S A V BRILLIANCE 8077 | S A V BISMARCK 5682       |
| PVF INSIGHT 0129      | S A V BLACKCAP MAY 5270   |
| PVF MISSIE 790        | P V F NEW HORIZON 001     |
|                       | P V F MISS RAPTOR 024     |
| MAGS XYLOID           | DHVO DEUCE 132R           |
| SBLX ZNOTE            | BOHI RHONDA 314R          |
| MAGS MANUELA          | EXLR LIMITED EDITION 765J |
|                       | AUTO CITY NIGHTS 214H     |

|      | EPD's | %Rank |
|------|-------|-------|
| CED  | 14    | 5     |
| BW   | 0.2   | 25    |
| WW   | 73    | 20    |
| YW   | 110   | 20    |
| MA   | 32    | 10    |
| CEM  | 8     | 20    |
| SC   | 0.93  | 25    |
| ST   | 8     | 35    |
| DOC  | 25    | 20    |
| CW   | 31    | 35    |
| REA  | 0.86  | 3     |
| YG   | -0.21 | 45    |
| MARB | 0.32  | 15    |
| SMTI | 65.41 | 10    |



**GE-EPDs**  
North American Limousin Foundation

This homozygous black, heterozygous polled female is a daughter of the ever popular PVF Insight 0129 Angus sire. He sires eye-appealing cattle with moderate birth weights, solid growth, strong carcass value and maternal function. His progeny are well balanced, deep-bodied cattle that exhibit added muscle shape and dimension. This female is so extended up through her front end and exhibits an incredible amount of volume. SSTO 7854E has the look to be at the top of any program. This is a great female in the making and one of the finest to ever carry an SSTO prefix.

## SSTO Eternal 729E ET

Lim-Flex {44} Cow | DPollled/DBlack | 03.07.17 | SSTO 729E | LFF 2129540



S A V BRILLIANCE 8077  
PVF INSIGHT 0129  
PVF MISSIE 790

MAGS XYLOID  
SBLX ZNOTE  
MAGS MANUELA

S A V BISMARCK 5682  
S A V BLACKCAP MAY 5270  
P V F NEW HORIZON 001  
P V F MISS RAPTOR 024  
DHVO DEUCE 132R  
BOHI RHONDA 314R  
EXLR LIMITED EDITION 765J  
AUTO CITY NIGHTS 214H



**GE-EPDs**  
North American Limousin Foundation

|      | EPD's | %Rank |
|------|-------|-------|
| CED  | 11    | 20    |
| BW   | 1.7   | 60    |
| WW   | 72    | 25    |
| YW   | 110   | 20    |
| MA   | 30    | 15    |
| CEM  | 5     | 70    |
| SC   | 0.93  | 25    |
| ST   | 8     | 35    |
| DOC  | 25    | 20    |
| CW   | 33    | 30    |
| REA  | 0.73  | 10    |
| YG   | -0.21 | 45    |
| MARB | 0.31  | 15    |
| SMTI | 64.78 | 10    |

SSTO Eternal 729E is a 43% Lim-Flex female that is heterozygous black and heterozygous polled. This heifer is straight in her lines, level and square out of her hip and tremendously eye-catching from the profile. She combines the premier Angus genetics found in PVF Insight and is from the leading Stowers donor and now major league donor SBLX Znote.



## SSTO Everlast 730E ET

Lim-Flex {43} Cow | HPollled/DBlack | 03.07.17 | SSTO 730E | LFF 2129541



S A V BRILLIANCE 8077  
PVF INSIGHT 0129  
PVF MISSIE 790

MAGS XYLOID  
SBLX ZNOTE  
MAGS MANUELA

S A V BISMARCK 5682  
S A V BLACKCAP MAY 5270  
P V F NEW HORIZON 001  
P V F MISS RAPTOR 024  
DHVO DEUCE 132R  
BOHI RHONDA 314R  
EXLR LIMITED EDITION 765J  
AUTO CITY NIGHTS 214H



**GE-EPDs**  
North American Limousin Foundation

|      | EPD's | %Rank |
|------|-------|-------|
| CED  | 13    | 10    |
| BW   | 0.5   | 30    |
| WW   | 72    | 25    |
| YW   | 110   | 20    |
| MA   | 33    | 10    |
| CEM  | 6     | 55    |
| SC   | 0.93  | 25    |
| ST   | 8     | 35    |
| DOC  | 25    | 20    |
| CW   | 32    | 30    |
| REA  | 0.79  | 10    |
| YG   | -0.21 | 45    |
| MARB | 0.29  | 15    |
| SMTI | 64.05 | 10    |

SSTO Everlast 730E ET will be sure to leave an everlasting impression in any pasture. Her marbling EPD ranks in the top 15% of the breed and she is solid across the board. Structural correctness and volume is the name of the game with this female. She is big ribbed, smooth shouldered and very well structured.



## SSTO Encore 727E ET

Lim-Flex {43} Cow | DPollled/DBlack | 03.06.17 | SSTO 727E | LFF 2129539



S A V BRILLIANCE 8077  
PVF INSIGHT 0129  
PVF MISSIE 790

MAGS XYLOID  
SBLX ZNOTE  
MAGS MANUELA

S A V BISMARCK 5682  
S A V BLACKCAP MAY 5270  
P V F NEW HORIZON 001  
P V F MISS RAPTOR 024  
DHVO DEUCE 132R  
BOHI RHONDA 314R  
EXLR LIMITED EDITION 765J  
AUTO CITY NIGHTS 214H



**GE-EPDs**  
North American Limousin Foundation

|      | EPD's | %Rank |
|------|-------|-------|
| CED  | 14    | 5     |
| BW   | -0.4  | 20    |
| WW   | 72    | 25    |
| YW   | 111   | 15    |
| MA   | 30    | 15    |
| CEM  | 7     | 35    |
| SC   | 0.93  | 25    |
| ST   | 8     | 35    |
| DOC  | 25    | 20    |
| CW   | 31    | 35    |
| REA  | 0.81  | 5     |
| YG   | -0.21 | 45    |
| MARB | 0.3   | 15    |
| SMTI | 64.44 | 10    |

SSTO Encore 727E ET is a heterozygous black, heterozygous polled female. Her yearling weight and milk EPD's rank in the top 15% of the breed. Encore is strong in her design and has such desirable conformation. This female is good patterned and will produce quality offspring backed by a proven pedigree. She is sired by the popular PVF Insight 0129. He has worked so well on higher percentage Limousin. His combination of visual traits along with his \$W and \$B values make him unmatched in the Angus breed and has helped in the creation of this young show heifer and her full siblings.





| LSTO 609D, owned by Emma Tittor  
 2017 Shootout Show Reserve Champion Female  
 2017 San Antonio Stock Show Champion Female  
 2017 State Fair of Texas Champion Female



| SSTO Daphne 658D, owned by Lana Tittor  
 2017 State Fair of Texas Division Champion Female



| LSTO Best Look 409B, owned by Ryon Chaney  
 2016 Fort Worth Show Reserve Champion Female



| SSTO Desire 655D, owned by Bryson Morrow  
 2017 West Texas State Fair Reserve Champion Female



| SSTO Candy Apple 5813C, owned by Sunni Haire  
 2016 Houston Stock Show Reserve Division Champion Female



| SSTO Can't Stop 5805C, owned by Bryson Morrow  
 2016 San Antonio Stock Show Reserve Division Champion Female



| SSTOCowgirl 5879C, owned by Mackenzie Lewis  
 2017 Houston Stock Show Reserve Supreme Champion Scramble Heifer



Champions



## SSTO Early Edition 733E ET

Lim-Flex (60) Cow | HPolled/HBlack | 03.09.17 | SSTO 733E | LFF 2129542



MAGS WINSTON  
MAGS AVIATOR  
MAGS XTRA REST  
  
MAGS XYLOID  
ELCX KNOWING 303Z  
SBLX UNKNOWN 104U

BT CROSSOVER 758N  
MAGS STRAWBERRY  
DHVO DEUCE 132R  
MAGS UNREST  
DHVO DEUCE 132R  
BOHI RHONDA 314R  
MYTTY IN FOCUS  
MAGS MANUELA

|      | EPD's | %Rank |
|------|-------|-------|
| CEB  | 11    | 20    |
| BW   | 2.1   | 70    |
| WW   | 70    | 30    |
| YW   | 98    | 45    |
| MA   | 24    | 65    |
| CEM  | 5     | 70    |
| SC   | 0.85  | 35    |
| ST   | 6     | 55    |
| DOC  | 31    | 10    |
| CW   | 26    | 55    |
| REA  | 0.28  | 80    |
| YG   | 0.12  | >95   |
| MARB | 0.23  | 20    |
| SMTI | 58.37 | 25    |



**GE-EPDs**  
North American Limousin Foundation

This is a big time donor in the making. She's bred to be excellent. SSTO Early Edition 733E is sired by the popular sire, MAGS Aviator. Her dam is bred by the highly respected Edwards Land and Cattle Co. herd, ELCX Knowing 303Z This female has been destined for greatness since the mating was planned on paper. Going down her pedigree you will see the many times champion, MAGS Xyloid, the Angus birth weight leader MYTTY In Focus and the modern day matriarch of the Limousin breed, MAGS Manuela. This fine homozygous polled Lim-Flex female records a notable 28 DOC EPD, which put her in the top 3% for that particular trait. Knowing 303Z was reserve champion at the American Royal for Pinegar Limousin and we were fortunate to acquire this \$20,000 top selling female in the 2014 National Sale. SSTO Early Edition is homozygous black and homozygous polled. When you see this female in person- you'll stop in your tracks. She's sound in her movement and ties a great amount of muscle and balance into a tremendously feminine package.



| ELCX Knowing 303Z, dam of Lot 18 |

## SSTO Early Bird 731E ET

% Limousin (79) Cow | HPolled/HBlack | 03.07.17 | SSTO 731E | NXF 2129671



MAGS WINSTON  
MAGS AVIATOR  
MAGS XTRA REST  
  
DHVO TREY 133R  
PBRS YOUR THE ONE 1134Y  
CARROUSELS PINA COLADA

BT CROSSOVER 758N  
MAGS STRAWBERRY  
DHVO DEUCE 132R  
MAGS UNREST  
GPFF BLAQUE RULON  
AMY JO DHAN 20L  
AUTO BLACK DAKOTA 129J  
ELMW GINNIE P58G

|      | EPD's | %Rank |
|------|-------|-------|
| CEB  | 9     | 35    |
| BW   | 1.2   | 50    |
| WW   | 67    | 40    |
| YW   | 88    | 65    |
| MA   | 20    | 95    |
| CEM  | 0     | >95   |
| SC   | 0.45  | 80    |
| ST   | 5     | 65    |
| DOC  | 20    | 40    |
| CW   | 18    | 85    |
| REA  | 0.29  | 80    |
| YG   | 0.01  | 95    |
| MARB | 0.08  | 35    |
| SMTI | 52.83 | 40    |



**GE-EPDs**  
North American Limousin Foundation

Here is another daughter of MAGS Aviator, SSTO Early Bird 731E. This female's dam is PBRS You're the One. You're the One is a direct daughter of Carrouseles Pina Colada, making her a maternal sister to many great ones including BOHI Top Dollar, BOHI Titleist, MAGS Ukalani and our very own SSTO All Yours 3450A and SSTO Watercolors 9450W. Sired by Medal of Excellence award winner, DHVO Trey. Lauren showed You're the One and was blessed with winning the San Antonio Junior Limousin show and went on to be selected Supreme Champion of the 17 breeds exhibited. You're the One is homozygous black and we look to her to be one our lead off purebred donor in years to come. SSTO Early Bird is homozygous black and homozygous polled. We admire this female's length of body and extension through her front one third. She is sound on the move and so impressive when she strikes a pose.



| PBRS Your the One 1134Y, dam of Lot 19 |



| SSTO Ageless Beauty 345A, dam of Lot 20 |

## SSTO Electric 742E ET

Lim-Flex (65) Cow | DPollled/HBlack | 03.07.17 | SSTO 742E | LFF 2130140



MAGS WINSTON  
MAGS ZODIAC  
MAGS XANTHOUS

AUTO WILL POWER 160X  
SSTO AGELESS BEAUTY 345A  
MAGS MANUELA

BT CROSSOVER 758N  
MAGS STRAWBERRY  
DHVO DEUCE 132R  
BOHI RHONDA 314R  
G A R PREDESTINED  
AUTO REBECA 292S  
EXLR LIMITED EDITION 765J  
AUTO CITY NIGHTS 214H



**GE-EPDs**  
North American Limousin Foundation

|      | EPD's | %Rank |
|------|-------|-------|
| CED  | 12    | 15    |
| BW   | 1.2   | 50    |
| WW   | 80    | 10    |
| YW   | 116   | 10    |
| MA   | 26    | 45    |
| CEM  | 8     | 20    |
| SC   | 0.7   | 45    |
| ST   | 3     | 85    |
| DOC  | 21    | 35    |
| CW   | 34    | 25    |
| REA  | 0.38  | 65    |
| YG   | -0.03 | 85    |
| MARB | 0.28  | 15    |
| SMTI | 64.50 | 10    |

SSTO Electric 742E is sired by MAGS Zodiac, the top selling bull at Magness and is the double homozygous son of Winston. Her dam, SSTO Ageless Beauty is out of the legendary MAGS Manuela donor. This double black female has a great set of EPD's behind her with weaning weight and yearling weight ranking in the top 20% of the breed. This female represents a proven and productive pedigree. Here's a maternal individual that is extremely long in her lines and structurally sound.



| SBLX SULL City Nights ET, dam of Lot 21 |

## SSTO Excessive 7841E

Lim-Flex (50) Cow | DPollled/HBlack | 03.12.17 | SSTO 7841E | LFF 2127965



MAGS Y-AXIS  
MAGS BRONSON  
MAGS RAPHAELA

BSAR OPPORTUNITY 9114  
SBLX SULL CITY NIGHTS ET  
MAGS MANUELA

TC ABERDEEN 759  
MAGS UAHUKA  
SUMMITCRESTHIGHPRIME 0H29  
MAGS LADY ACE  
BSAR DESIGN DOCTOR 0910  
BISHOPS LASSIE 746  
EXLR LIMITED EDITION 765J  
AUTO CITY NIGHTS 214H



|      | EPD's | %Rank |
|------|-------|-------|
| CED  | 11    | 20    |
| BW   | 2.6   | 80    |
| WW   | 66    | 45    |
| YW   | 106   | 25    |
| MA   | 25    | 55    |
| CEM  | 8     | 20    |
| SC   | 0.95  | 25    |
| ST   | 4     | 75    |
| DOC  | -     | -     |
| CW   | 33    | 30    |
| REA  | 0.8   | 10    |
| YG   | -0.32 | 15    |
| MARB | 0.2   | 25    |
| SMTI | 59.87 | 20    |

Talk about an excellent one in the making ... here she is. Her dam, SBLX Sull City Nights, is a known daughter of the breed great MAGS Manuela 662M. She is clean up through the front, level and long bodied, super sound made and very soft in her pasterns. She is very fluid in her movement and sound in her structure. The blending of the high marbling, deep bodied Angus sire BSAR Opportunity with the stout made, heavy muscled and coon footed Limousin donor MAGS Manuela has proven to be a huge hit. SSTO 7841 is sired by MAGS Bronson. "Intriguing" doesn't even begin to describe this herd sire's pedigree. He is sired by one of the most consistent bulls available on the market for calving ease and quality, MAGS Y-Axis, and his dam is a carcass data icon. MAGS Rapheala is in the top 1% of the breed for YG, REA and the top 10% for MARB. It doesn't get any better than that! In addition to being in the top 1% for YG and REA himself, Bronson has a truly functional skeletal design that is appealing for today's cattleman. SSTO 7841E is homozygous black and double polled.

## 2 Embryos

50% Lim-Flex | Double Polled | Double Black



|                        |                          |
|------------------------|--------------------------|
| MAGS THE GENERAL       | AUTO DOLLAR GENERAL 122R |
| MAGS YIP               | EXLR LUVLY 821M          |
| AUTO CARMINDA 656S     | JCL LODESTAR 27L         |
|                        | AUTO CARMINDA 872P       |
| CONNELY CONSENSUS 7229 | CONNELY CONSENSUS        |
| EXAR FOREVER LADY 2169 | BLUE LILLY OF CONANGA 16 |
| EXAR FOREVER LADY 0586 | DAMERON FIRST CLASS      |
|                        | EXAR FOREVER LADY 2627   |

|      | SIRE  | DAM   |
|------|-------|-------|
| CEU  | 8     | 11    |
| BW   | 1.9   | -0.6  |
| WW   | 71    | 64    |
| YW   | 113   | 102   |
| MA   | 17    | 22    |
| CEM  | 7     | 4     |
| SC   | 0.5   | 1.4   |
| ST   | 4     | 6     |
| DOC  | 2     | 19    |
| CW   | 40    | 30    |
| REA  | -0.17 | 0.57  |
| YG   | 0.11  | 0.02  |
| MARB | 0.1   | 0.9   |
| SMTI | 54.29 | 81.85 |

Here's your opportunity to invest in two 50% Lim-Flex, double polled, double black embryos from the MAGS Yip/ EXAR Forever Lady 2169 mating. MAGS Yip is phenotypically flawless and offers strong performance and numbers. He combines the Limousin look and performance into a homozygous black and homozygous polled package. As an outcross to many common pedigrees, Yip brings power and convenience with a pedigree that is ready for growth. Forever Lady is out of the popular Connealy Consensus 7229. This highly valuable embryo mating is sure to create the quality we've seen from both individuals.



MAGS Yip, sire of Lot 18 embryos

## SSTO Drummer Girl 6807D

Lim-Flex (56) Cow | HPolled/HBlack | 02.18.16 | SSTO 6807D | LFF 2098482



|                      |                           |
|----------------------|---------------------------|
| MAGS XYLOID          | DHVO DEUCE 132R           |
| MAGS ZINCOGRAPH      | BOHI RHONDA 314R          |
| MAGS PARADISE CANYON | BR MIDLAND                |
|                      | MISS WULFETTE 6230F       |
| DVFC HUSTLER 301P    | JCL LODESTAR 27L          |
| SSTO TATUM 7804T     | DVFC CHOCOLATECHIP COOKIE |
| G A R PLOWMAN A311   | PLOWMAN 1627 OF MILLBRAE  |
|                      | G A R SLEEP EASY 214      |

|      | EPD's | %Rank |
|------|-------|-------|
| CEU  | 10    | 25    |
| BW   | 0.4   | 30    |
| WW   | 54    | 85    |
| YW   | 83    | 75    |
| MA   | 18    | >95   |
| CEM  | 8     | 20    |
| SC   | 0.54  | 70    |
| ST   | 6     | 55    |
| DOC  | -     | -     |
| CW   | 20    | 75    |
| REA  | 0.32  | 75    |
| YG   | -0.04 | 85    |
| MARB | 0.36  | 10    |
| SMTI | 59.81 | 20    |

BF: 0.29 | REA: 12.24 | IMF: 3.85



P.E. MAGS Bronson on 06.01.17 - 07.15.17; safe.

SSTO Drummer Girl 6807D is a homozygous black, homozygous polled daughter of MAGS Zincograph. Zincograph is a spectacular MAGS Xyloid son who is as sound as they come and has the look of a both a champion in the ring and a leader in the breeding population. He is a maternal brother to MAGS Unloosen the Fosdick Cattle Co herd sire who was the 2009 Supreme Champion at the All American Limousin Futurity. Zincograph is not only homozygous black and homozygous polled his individual ultra-sound data is certainly worth replicating. UREA ratio of 110, UFAT ratio of 81.6 and UIMF ratio of 104.1. In our opinion, these carcass traits combined with his phenotypically superior pedigree make him a true asset to our program. Her dam, SSTO Tatum 7804 is a female of ours sired by DVFC Hustler from a Gardiner bred purebred Angus female. Drummer Boy's marbling EPD ranks in the top 10% of the breed with a 0.36. We love this one's pedigree and you can certainly buy with confidence here. This female is big footed, level topped and has such a quality look.

## SSTO Darla 6817D

Lim-Flex (50) Cow | HPolled/HBlack | 02.18.16 | SSTO 6817D | LFF 2098476



|                      |                           |
|----------------------|---------------------------|
| EXAR UPSHOT 0562B    | SITZ UPWARD 307R          |
| EXAR DENVER 2002B    | EXAR BARBARA T020         |
| EXAR ROYAL LASS 1067 | EXAR 263C                 |
|                      | BR ROYAL LASS 19-132      |
| MAGS XYLOPOLIST      | DHVO DEUCE 132R           |
| SSTO BRITTANY 405B   | MAGS STRAWBERRY           |
| MAGS MANUELA         | EXLR LIMITED EDITION 765J |
|                      | AUTO CITY NIGHTS 214H     |

|      | EPD's | %Rank |
|------|-------|-------|
| CEU  | 12    | 15    |
| BW   | 1.9   | 65    |
| WW   | 68    | 35    |
| YW   | 111   | 15    |
| MA   | 34    | 4     |
| CEM  | 8     | 20    |
| SC   | 0.97  | 25    |
| ST   | 7     | 45    |
| DOC  | 24    | 25    |
| CW   | 39    | 15    |
| REA  | 0.75  | 10    |
| YG   | -0.07 | 80    |
| MARB | 0.56  | 3     |
| SMTI | 71.58 | 3     |

BF: 0.22 | REA: 12.29 | IMF: 3.66



AI'd to MAGS Bronson on 05.17.17; safe to P.E. MAGS Bronson on 06.01.17 - 07.15.17.

SSTO Darla 6817D is a 50% Lim-Flex homozygous black, homozygous polled daughter of EXAR Denver 2002B. Denver's first calf crop ranked him among the Top 25 sires of progeny registered in 2014, and he remained among that elite Top 25 sires of progeny registered for three consecutive years. He set a sales record at America's largest seed stock operation when he sold one third semen interest for \$340,000 after being a second generation lead bull of an Express National Western Grand Champion Carload of Bulls at the 2013 National Western where he was the favorite Angus bull of the yards. Darla's dam, SSTO Brittany 405B is a daughter of the famed MAGS Manuela cow. SSTO Darla's marbling EPD ranks in the top 3% of the breed and milk in the top 4%. We appreciate this female for her length of spine and boldness of rib shape. She stands proud and has a killer brood cow look when she strikes a pose.



Morris

| SSTO Darla 603D ET, Lot 25 |

AUTO Tootsie Pop 2272T is one of the top donor cows in the Linhart Limousin program and has produced calves that have generated well over \$150,000 in total sales. She is one of their top donors and her progeny consistently have shined in the show ring and propelled to new heights in the market place.

### AUTO Tootsie Pop 2272T

PB Limousin {100} Cow | Polled/Black | 11.20.07 | AUTO 2272T | NPF 1904661

GPF BLAQUE RULON  
DHVO DEUCE 132R  
AMY JO DHAN 20L

EXLR DAKOTA 353G  
EXLR MOLLY 7103K  
EXLR MOLLY 343G

BLACK DIAMOND  
QUAIL RUN RAMONA BP  
BLACK CAT DHAN 152G  
GPF AMBER JO  
WULF'S COUNT DOWN 9251C  
CANE RIDGE DAPHNE 011D  
CANE RIDGE POLLED WYATT  
JCL MOLLY

|      | EPD's | %Rank |
|------|-------|-------|
| CED  | 4     | 80    |
| BW   | 3.4   | 85    |
| WW   | 68    | 20    |
| YW   | 91    | 40    |
| MA   | 25    | 55    |
| CEM  | 5     | 60    |
| SC   | 1.00  | 15    |
| ST   | 6     | 55    |
| DOC  | 14    | 60    |
| CW   | 28    | 35    |
| REA  | 0.61  | 25    |
| YG   | -0.24 | 45    |
| MARB | -0.41 | >95   |
| SMTI | 37.52 | 85    |



### SSTO Darla 603D ET

Lim-Flex {75} Cow | DPolled/Red | 01.22.16 | SSTO 603D | LFF 2106712

BT CROSSOVER 758N  
MAGS WINSTON  
MAGS STRAWBERRY

DHVO DEUCE 132R  
AUTO TOOTSIE POP 2272T  
EXLR MOLLY 7103K

C A FUTURE DIRECTION 5321  
BT ROYAL PRIDE 237G  
EXLR NEW GENERATION 071M  
MAGS FRUITFUL 487M  
GPF BLAQUE RULON  
AMY JO DHAN 20L  
EXLR DAKOTA 353G  
EXLR MOLLY 343G

BF: 0.22 | REA: 13.61 | IMF: 3.46



|      | EPD's | %Rank |
|------|-------|-------|
| CED  | 10    | 25    |
| BW   | 1.5   | 55    |
| WW   | 63    | 55    |
| YW   | 102   | 35    |
| MA   | 24    | 65    |
| CEM  | 9     | 10    |
| SC   | 0.45  | 80    |
| ST   | 3     | 85    |
| DOC  | 21    | 35    |
| CW   | 32    | 30    |
| REA  | 0.45  | 50    |
| YG   | -0.11 | 70    |
| MARB | 0.16  | 30    |
| SMTI | 55.97 | 30    |

P.E. to MAGS Bronson on 06.01.17 - 07.15.17; safe.

This MAGS Winston daughter is a heterozygous polled 75% Lim-Flex female. Winston was the high seller at the 2014 Magness sale, and his combination of stylish phenotype and tremendous performance makes him a must try. His semen is no longer on the market as he is deceased. This female is sound from the ground up. She combines muscle and capacity into a tremendously maternal package.

## SSTO Diva 604D ET

Lim-Flex {75} Cow | HDPolled/HBlack | 01.19.16 | SSTO 604D | LFF 2106713



BT CROSSOVER 758N  
MAGS WINSTON  
MAGS STRAWBERRY

DHVO DEUCE 132R  
AUTO TOOTSIE POP 2272T  
EXLR MOLLY 7103K

C A FUTURE DIRECTION 5321  
BT ROYAL PRIDE 237G  
EXLR NEW GENERATION 071M  
MAGS FRUITFUL 487M  
GPFF BLAQUE RULON  
AMY JO DHAN 20L  
EXLR DAKOTA 353G  
EXLR MOLLY 343G

BF: 0.29 | REA: 13.7 | IMF: 4.12

|      | EPD's | %Rank |
|------|-------|-------|
| CED  | 10    | 25    |
| BW   | 2.9   | 85    |
| WW   | 68    | 35    |
| YW   | 101   | 35    |
| MA   | 24    | 65    |
| CEM  | 9     | 10    |
| SC   | 0.45  | 80    |
| ST   | 3     | 85    |
| DOC  | 21    | 35    |
| CW   | 32    | 30    |
| REA  | 0.45  | 50    |
| YC   | -0.11 | 70    |
| MARB | 0.16  | 30    |
| SMTI | 57.24 | 25    |



| MAGS Aviator 373A, service sire to Lot 26 |



AI'd to MAGS Aviator 373A on 05.17.17; safe.

SSTO Diva 604D is a homozygous black, homozygous polled female that represents a proven and prominent pedigree. She is sired by the prevalent bull, MAGS Winston. We love this one's unique look. She is heavy muscled, structurally sound and refined through her front

## SSTO Derby 605D ET

Lim-Flex {75} Cow | DPoled/DBlack | 01.18.16 | SSTO 605D | LFF 2106714



BT CROSSOVER 758N  
MAGS WINSTON  
MAGS STRAWBERRY

DHVO DEUCE 132R  
AUTO TOOTSIE POP 2272T  
EXLR MOLLY 7103K

C A FUTURE DIRECTION 5321  
BT ROYAL PRIDE 237G  
EXLR NEW GENERATION 071M  
MAGS FRUITFUL 487M  
GPFF BLAQUE RULON  
AMY JO DHAN 20L  
EXLR DAKOTA 353G  
EXLR MOLLY 343G

BF: 0.27 | REA: 11.59 | IMF: 3.93

|      | EPD's | %Rank |
|------|-------|-------|
| CED  | 10    | 25    |
| BW   | 0.2   | 25    |
| WW   | 71    | 25    |
| YW   | 105   | 25    |
| MA   | 24    | 65    |
| CEM  | 9     | 10    |
| SC   | 0.45  | 80    |
| ST   | 3     | 85    |
| DOC  | 21    | 35    |
| CW   | 32    | 30    |
| REA  | 0.45  | 50    |
| YC   | -0.11 | 70    |
| MARB | 0.16  | 30    |
| SMTI | 58.08 | 25    |



| MAGS Bronson, service sire to Lot 27 |



AI'd to MAGS Bronson on 05.18.17; safe to P.E. to MAGS Bronson 06.01.17 - 07.15.17.

This bred female has an impressive set of EPD's. Here is another daughter of MAGS Winston that will hold her own in any herd. Her birth weight, weaning weight and yearling weight numbers all rank in the top 25% of the breed. This performance-oriented female is sound made, strong down her top and easy doing. She is sound in her movement and very feminine through her front end.



| SBLX Xtra Special, maternal grandam of Lot 28 |

## SSTO Drivin 6818D

Lim-Flex {46} Cow | HPolled/DBlack | 02.29.16 | SSTO 6818D | LFF 2120059



BASIN FRANCHISE P142  
LH U HAUL 135U  
EXLR DUCHESS 7129R

EXAR UPSHOT 0562B  
LSTO BELIEVE ME 4819B  
SBLX XTRA SPECIAL

C A FUTURE DIRECTION 5321  
BASIN CHLOE 812L  
EXLR NEW GENERATION 071M  
EXLR 199H  
SITZ UPWARD 307R  
EXAR BARBARA T020  
DHVO DEUCE 132R  
MAGS MANUELA

|      | EPD's | %Rank |
|------|-------|-------|
| CED  | 12    | 15    |
| BW   | 1     | 45    |
| WW   | 68    | 35    |
| YW   | 112   | 15    |
| MA   | 29    | 20    |
| CEM  | 7     | 35    |
| SC   | 1.2   | 10    |
| ST   | 3     | 85    |
| DOC  | 20    | 40    |
| CW   | 39    | 15    |
| REA  | 0.68  | 15    |
| YG   | -0.06 | 80    |
| MARB | 0.57  | 3     |
| SMTI | 71.96 | 2     |

AI'd to MAGS Bronson on 05.18.17; safe.

SSTO Drivin 6818D is a homozygous polled, heterozygous black daughter of LH U Haul 135U. U Haul's calves prove that he combines maternal characteristics, marbling and performance into a package that will stand out in any herd. This female's dam, LSTO Believe In Me, is a daughter of SBLX Xtra Special, one of the highest valued young donors in the breed at \$106,000. The DHVO Deuce/MAGS Manuela mating has produced some of the finest cattle to set foot on ground, and SBLX Xtra Special is no exception. Drivin's EPD's are quite impressive. Her marbling EPD ranks in the top 10% of the breed and yearling weight in the top 15%.

This female is extremely stout featured and sound on her feet and legs. She has cow written all over her, both phenotypically and on paper.

## SSTO Day Break 6820D

Lim-Flex {54} Cow | HPolled/HBlack | 02.20.16 | SSTO 6820D | LFF 2098486



MAGS WINSTON  
MAGS AVIATOR  
MAGS XTRA REST

S A V BISMARCK 5682  
RVF BARBARA 647B  
COSC PASSION 414P

BT CROSSOVER 758N  
MAGS STRAWBERRY  
DHVO DEUCE 132R  
MAGS UNREST  
G A R GRID MAKER  
S A V ABIGALE 0451  
JCL LODESTAR 27L  
C L 385 B

BF: 0.12 | REA: 9.08 | IMF: 3.57

|      | EPD's | %Rank |
|------|-------|-------|
| CED  | 11    | 20    |
| BW   | 1     | 45    |
| WW   | 60    | 65    |
| YW   | 81    | 80    |
| MA   | 23    | 75    |
| CEM  | 9     | 10    |
| SC   | 0.9   | 25    |
| ST   | 7     | 45    |
| DOC  | 20    | 40    |
| CW   | 19    | 80    |
| REA  | 0     | >95   |
| YG   | -0.1  | 75    |
| MARB | 0.43  | 10    |
| SMTI | 64.43 | 10    |

P.E. to MAGS Bronson from 06.01.17 - 07.15.17; safe.

SSTO Day Break 6820D is a MAGS Aviator daughter. Aviator is the syndicated son of MAGS Winston, the high seller at the 2014 Magness sale, and his combination of stylish phenotype and tremendous performance makes him a must try. Homozygous black and Homozygous polled, he offers a super structure, calving-ease and carcass in one package. Day Break's dam, RVF Barbara 647B, is intriguing in how she ties together exceptional birthweight data and above average growth. On the other side of her statistical profile she is even more impressive as she is above average for YG, REA and still ranks in the top 10% of the breed for MB. That is not a combination that you see everyday. SSTO Day Break 6820D is homozygous black and homozygous polled. If you are looking for a big numbered, powerful female- look no further. This female is super sound structured, long spined and has a tremendous amount of rib shape.





| SSTO Chance It 552C, Lot 30 |



| EXAR Blackbird 2830, dam of Lot 30 |

## SSTO Chance It 552C ET

Lim-Flex {25} Cow | HPolled/HBlack | 09.09.15 | SSTO 552C | LFF 2095282



|                           |                           |
|---------------------------|---------------------------|
| COLEMAN PRODUCTION 608    | GAR PRECISION 1680        |
| COLE WINDFALL 144W        | COLEMAN BLACKCAP 211      |
| COLE MISS FIRSTDOWN 6162S | CLONE-COLE FIRST DOWN 46D |
|                           | COLE 18K                  |
| CONNEALY CONSENSUS 7229   | CONNEALY CONSENSUS        |
| EXAR BLACKBIRD 2830       | BLUE LILLY OF CONANGA 16  |
| MGR BLACKBIRD 8055        | G A R PREDESTINED         |
|                           | EXAR BLACKBIRD 5005       |

BF: 0.19 | REA: 11.72 | IMF: 3.06

**GE-EPDs**  
North American Limousin Foundation

|      | EPD's | %Rank |
|------|-------|-------|
| CED  | 12    | 15    |
| BW   | 0.5   | 30    |
| WW   | 81    | 5     |
| YW   | 122   | 5     |
| MA   | 31    | 15    |
| CEM  | 6     | 55    |
| SC   | 1.4   | 3     |
| ST   | 7     | 45    |
| DOC  | 11    | 85    |
| REA  | 39    | 15    |
| CW   | 0.59  | 30    |
| YG   | 0     | 90    |
| MARB | 0.53  | 3     |
| SMTI | 73.73 | 2     |

SSTO Chance It 552C is a homozygous black, homozygous polled COLE Windfall daughter. Windfall was the lead bull in Coleman Limousin Ranch's 2010 Reserve Champion Lim-Flex Pen and top seller in their 2010 Sale (sold to Australia). He scanned a 16.74 inch ribeye and 5.02% IMF. Windfall ranks in the top 1% for weaning weight, yearling weight and SMTI. He also ranks in the top 5% for milk and marbling. This female's dam, EXAR Blackbird 2830 is the leading Angus donor cow at Stowers Limousin. She is a leading daughter of Connealy Consensus 7229 and from a daughter of GAR Predestined back to a daughter of RITO of 2536. She posts a 68 for weaning weight, 114 for yearling weight and 30 for milking ability. She has a breed leading REA EPD of .63 and marbling EPD of 1.3. This young donor cow not only has a sought after pedigree and extreme EPD's, she is big footed, sound structured and very appealing in her conformation. No matter whether you want to create purebred Angus or big numbered Lim-Flex considering the genetics from this elite purebred Angus will be a very wise investment. SSTO Chance It has an incredibly powerful set of EPDs- marbling ranks in the top 3% of the breed, weaning weight and yearling weight in the top 5% and milk in the top 15%.

## SSTO Everest 7957E

Lim-Flex {37} Cow | HPolled/HBlack | 10.25.17 | SSTO 7957E | LFF 2133980



|                        |                           |
|------------------------|---------------------------|
| MAGS Y-AXIS            | TC ABERDEEN 759           |
| MAGS BRONSON           | MAGS UAHUKA               |
| MAGS RAPHAELA          | SUMMITCRESTHIGHPRIME 0H29 |
|                        | MAGS LADY ACE             |
| COLE WINDFALL 144W     | COLEMAN PRODUCTION 608    |
| SSTO CHANCE IT 552C ET | COLE MISS FIRSTDOWN 6162S |
| EXAR BLACKBIRD 2830    | CONNEALY CONSENSUS 7229   |
|                        | MGR BLACKBIRD 8055        |



|      | EPD's | %Rank |
|------|-------|-------|
| CED  | 12    | 15    |
| BW   | 0.0   | 25    |
| WW   | 74    | 20    |
| YW   | 115   | 10    |
| MA   | 28    | 30    |
| CEM  | 7     | 35    |
| SC   | 1.32  | 5     |
| ST   | 6     | 55    |
| DOC  | 16    | 55    |
| CW   | 36    | 20    |
| REA  | 0.95  | 2     |
| YG   | -0.27 | 30    |
| MARB | 0.29  | 15    |
| SMTI | 65.33 | 10    |

This female is out of the popular MAGS Bronson. Bronson is sired by one of the most dependable bulls when it comes to calving ease and quality, MAGS Y-Axis. His dam, MAGS Rapheala is a carcass data favorite- she ranks in the top 1% of the breed for YG, REA and the top 10% for MB. This heifer calf carries a functional skeletal design and is super soft-middled.

BW: 60 lbs.

## SSTO Catina 557C ET

Lim-Flex (50) Cow | HPolled/HBlack | 11.01.15 | SSTO 557C | LFF 2097975



CONNEALY CONSENSUS 7229  
V A R GENERATION 2100  
SANDPOINT BLACKBIRD 8809

CONNEALY CONSENSUS  
BLUE LILLY OF CONANGA 16  
CONNEALY ONWARD  
RIVERBEND BLACKBIRD 4301  
EXLR DAKOTA 353G  
DFLC JET SET BPC 34Y  
MOSR TOUCHBACK 17A  
ADKL IMAN 825W

AUTO BLACK DAKOTA 129J  
DVFC KICK BACK 220R  
ADKL HOLLYWOOD 33C

BF: 0.13 | REA: 10.29 | IMF: 3.89

| EPD's | %Rank |    |
|-------|-------|----|
| CED   | 8     | 45 |
| BW    | 1     | 45 |
| WW    | 68    | 35 |
| YW    | 104   | 30 |
| MA    | 35    | 3  |
| CEM   | 5     | 70 |
| SC    | 0.6   | 55 |
| ST    | 1     | 95 |
| DOC   | 19    | 40 |
| CW    | 31    | 35 |
| REA   | 0.66  | 20 |
| YG    | -0.13 | 65 |
| MARB  | 0.41  | 10 |
| SMTI  | 66.38 | 10 |

SSTO Catina 557C is a homozygous black, homozygous polled daughter of VAR Generation 2100. Generation is the only proven sire to rank in the top 10% or better for all these important traits: WW, YW, DOC, HP, Milk, Marb, RE, \$W, \$F, \$G, \$QG and \$Beef. His progeny have been sale-topping features from coast to coast, but just as important is that over 60 bulls have gone through the VAR Bull sale at a \$11,300 average to commercial cattlemen and breeders alike. The dam of Generation is rewriting breed history in five years from having her first calf-8809 just passed \$3 million in progeny sales at Vintage Angus. SSTO Catina's EPD's will improve any herd's numbers- her milk EPD ranks in the top 3% of the breed and marbling in the top 10%.

## SSTO Close Call 5868C

Lim-Flex (46) Cow | HPolled/DBlack | 10.02.15 | SSTO 5868C | LFF 2083224



BASIN FRANCHISE P142  
LH U HAUL 135U  
EXLR DUCHESS 7129R

C A FUTURE DIRECTION 5321  
BASIN CHLOE 812L  
EXLR NEW GENERATION 071M  
EXLR 199H  
TC ABERDEEN 759  
MAGS RAMADA  
DHVO DEUCE 132R  
SEDGWICKS DUTCHES 2280

EBFL YPSILANTI 420Y  
SSTO ANGEL WINGS 322A  
PBRS DUTCHES 790X

| EPD's | %Rank |     |
|-------|-------|-----|
| CED   | 10    | 25  |
| BW    | 1.3   | 50  |
| WW    | 72    | 25  |
| YW    | 112   | 15  |
| MA    | 29    | 20  |
| CEM   | 7     | 35  |
| SC    | 1.25  | 10  |
| ST    | 0     | >95 |
| DOC   | 14    | 70  |
| CW    | 39    | 15  |
| REA   | 0.33  | 75  |
| YG    | 0.03  | 95  |
| MARB  | 0.39  | 10  |
| SMTI  | 65.72 | 10  |

SSTO Close Call 5868C is a homozygous polled, double black daughter of LH U Haul 135U. U Haul's calves prove that he combines maternal characteristics, marbling and performance into a package that will stand out in any herd. This female's dam, SSTO Angel Wings 322A is an EBFL Ypsilanti daughter. Close Call's EPD's are impressive- marbling ranks in the top 10% of the breed, 0.39, yearling weight in the top 15%, 112 and milk in the top 20%, 29.

## SSTO Even Money 7937E

Lim-Flex (46) Bull | DPoled/HBlack | 09.13.17 | SSTO 7937E | LFM 2133981



EF XCESSIVE FORCE  
HUBB BULLETPROOF  
MAGS ZALIA

V A R GENERATION 2100  
SSTO CATINA 557C ET  
DVFC KICK BACK 220R

D A TRAVELER 004 703  
CFLX MOLLYS IMAGE  
MAGS XUKALANI  
MAGS RUNNING ON EMPTY  
CONNEALY CONSENSUS 7229  
SANDPOINT BLACKBIRD 8809  
AUTO BLACK DAKOTA 129J  
ADKL HOLLYWOOD 33C

| EPD's | %Rank |    |
|-------|-------|----|
| CED   | 9     | 35 |
| BW    | 0.4   | 30 |
| WW    | 69    | 30 |
| YW    | 103   | 30 |
| MA    | 28    | 30 |
| CEM   | 6     | 55 |
| SC    | 1.01  | 20 |
| ST    | 5     | 65 |
| DOC   | 13    | 75 |
| CW    | 29    | 40 |
| REA   | 0.49  | 45 |
| YG    | -0.06 | 80 |
| MARB  | 0.32  | 15 |
| SMTI  | 62.69 | 15 |

This September bull calf is a HUBB Bulletproof son. Bulletproof is sired by the great Xcessive Force and sires cattle with eye appeal and total balance. Greatness is in this one's pedigree- tracing back to the popular VAR Generation 2100 Angus sire, this one is destined to be a standout in any herd.

BW: 70 lbs.

## SSTO Eclipse 7956E

Lim-Flex (48) Bull | HPolled/DBlack | 10.25.17 | SSTO 7956E | LFM 2133982



MAGS Y-AXIS  
MAGS BRONSON  
MAGS RAPHAELA

LH U HAUL 135U  
SSTO CLOSE CALL 5868C  
SSTO ANGEL WINGS 322A

TC ABERDEEN 759  
MAGS UAHUKA  
SUMMITCRESTHIGHPRIME 0H29  
MAGS LADY ACE  
BASIN FRANCHISE P142  
EXLR DUCHESS 7129R  
EBFL YPSILANTI 420Y  
PBRS DUTCHES 790X

| EPD's | %Rank |    |
|-------|-------|----|
| CED   | 11    | 20 |
| BW    | 1.1   | 45 |
| WW    | 69    | 30 |
| YW    | 110   | 20 |
| MA    | 27    | 35 |
| CEM   | 8     | 20 |
| SC    | 1.25  | 10 |
| ST    | 2     | 90 |
| DOC   | 18    | 45 |
| CW    | 35    | 20 |
| REA   | 0.82  | 5  |
| YG    | -0.5  | 35 |
| MARB  | 0.23  | 20 |
| SMTI  | 61.33 | 15 |

SSTO Eclipse 7956E is a very well made double black and homozygous polled son of SSOT Close Call 5868C. She is a daughter of the huge numbered LH U Haul. This bull calf is sired by MAGS Bronson. "Intriguing" doesn't even begin to describe this herd sire's pedigree. He is sired by one of the most consistent bulls available on the market for calving ease and quality, MAGS Y-Axis, and his dam is a carcass data icon. MAGS Rapheala is in the top 1% of the breed for YG, REA and the top 10% for MARB. It doesn't get any better than that! In addition to being in the top 1% for YG and REA himself, Bronson has a truly functional skeletal design that is appealing for today's cattleman. He is long-spined, soft-middle and lays in smooth at his shoulder like a true calving ease bull should.

BW: 75 lbs.

# TEXAS TRADITION

We Thank You





| SSTO Zaahid 589C, Lot 33 |



| SBLX Zaahida, dam of Lot 33 |

## SSTO Zaahid 589C

Lim-Flex (55) Cow | DPolled/DBlack | 11.16.15 | SSTO 589C | LFF 2133975

S A V PIONEER 7301 SAV FINAL ANSWER 0035  
 TMCK HYDRAULIC 17Y S A V BLACKBIRD 5297  
 HSF WALL OF FAME RPY PAYNES SIGNAL 6S  
 MAGS WINSTON BT CROSSOVER 758N  
 SBLX ZAAHIDA MAGS STRAWBERRY  
 MAGS MANUELA EXLR LIMITED EDITION 765J  
 AUTO CITY NIGHTS 214H

|      | EPD's | %Rank |
|------|-------|-------|
| CED  | 9     | 35    |
| BW   | 2.3   | 75    |
| WW   | 79    | 10    |
| YW   | 124   | 4     |
| MA   | 21    | 90    |
| CEM  | 8     | 20    |
| SC   | 0.42  | 80    |
| ST   | 7     | 45    |
| DOC  | 21    | 35    |
| CW   | 48    | 3     |
| REA  | 0.56  | 30    |
| YG   | 0.10  | >95   |
| MARB | 0.33  | 15    |
| SMTI | 65.05 | 10    |



Here is a female out of the performance giant, TMCK Hydraulic. He currently has a 142 yearling weight EPD and produces cattle with a deadly look and massive amounts of muscle and growth. Her dam, SBLX Zahida 953Z, is one of the very best to carry the SBLX prefix. SBLX Zaahida is a 75% Lim-Flex polled and homozygous black daughter of the now deceased MAGS Winston. Winston is a son of BT Crossover from the \$98,000 valued donor MAGS Strawberry. Her dam is MAGS Manuela, the daughter of EXLR Limited Edition from AUTO City Night, is a daughter of COLE First Down. The MAGS Manuela donor is one of those once in a lifetime females. She never misses and her sons and daughters continue to win the shows and top the market. This female is big footed, structurally sound and is tremendously well balanced from the profile.

## SSTO Everything Nice 7939E

Lim-Flex (55) Cow | Polled/Black | 09.15.17 | SSTO 7939E | LFF 2133985

MAGS AVIATOR MAGS WINSTON BT CROSSOVER 758N  
 MAGS XTRA REST MAGS STRAWBERRY  
 TMCK HYDRAULIC 17Y S A V PIONEER 7301  
 SSTO SAAHID 589C HSF WALL OF FAME  
 SBLX ZAAHIDA MAGS WINSTON  
 MAGS MANUELA

|      | EPD's | %Rank |
|------|-------|-------|
| CED  | 11    | 20    |
| BW   | 1.5   | 55    |
| WW   | 73    | 20    |
| YW   | 109   | 20    |
| MA   | 23    | 75    |
| CEM  | 7     | 35    |
| SC   | 0.46  | 80    |
| ST   | 6     | 55    |
| DOC  | 25    | 20    |
| CW   | 36    | 20    |
| REA  | 0.45  | 50    |
| YG   | 0.17  | >95   |
| MARB | 0.35  | 15    |
| SMTI | 63.37 | 15    |



This daughter of MAGS Aviator will catch anyone's attention. Aviator is the syndicated son of MAGS Winston, the high seller at the 2014 Magness sale, and his combination of stylish phenotype and tremendous performance makes him a must try. Homozygous black and Homozygous polled, he offers a super structure, calving-ease and carcass in one package. Her dam, SSTO 589C is out of the performance icon, TMCK Hydraulic. SSTO 7939E will make calves bred to be growthy and high performing.

BW: 68 lbs.

A close-up, high-contrast photograph of a dark horse's face. The horse's eye is visible in the upper right, looking towards the camera. The focus is on the horse's nostrils, which are filled with dry hay. The lighting is dramatic, with the horse's face mostly in shadow against a bright, overexposed background.

Reference

# Sires



| CJSL Dauntless 6257D |



| MAGS Aviator |



| MAGS Bronson |



| Riverstone Crown Royal |

## MAGS Bronson

Lim-Flex (50) Bull | HPolled/HBlack | 02.27.14 | MAGS 226B | LFM 2056618



TC ABERDEEN 759  
MAGS Y-AXIS  
MAGS UAHUKA  
MAGS RAPHAELA  
MAGS LADY ACE

C R A BEXTRO 872 5205 608  
TC BLACKBIRD 4034  
DHVO DEUCE 132R  
CARROUSELS PINA COLADA  
GARDENS PRIME TIME  
SUMMITCREST MISSIE 2F55  
EXLR INTRIGUE 361G  
CHAZ MISS GRETA 7003G

— BW 74 lbs. WW 740 lbs. YW 1449 lbs.

|      | EPD's | %Rank |
|------|-------|-------|
| CED  | 11    | 25    |
| BW   | 0.4   | 35    |
| WW   | 67    | 35    |
| YW   | 108   | 25    |
| MA   | 26    | 45    |
| CEM  | 8     | 25    |
| SC   | 1.25  | 15    |
| ST   | 5     | 55    |
| DOC  | 22    | 25    |
| CW   | 32    | 30    |
| REA  | 1.32  | 1     |
| YG   | -0.53 | 1     |
| MARB | 0.06  | 40    |
| SMTI | 56.94 | 30    |

## MAGS Aviator

Lim-Flex (59) Bull | HPolled/HBlack | 03.13.13 | MAGS 373A | LFM 2028667



BT CROSSOVER 758N  
MAGS WINSTON  
MAGS STRAWBERRY  
MAGS XTRA REST  
MAGS UNREST

C A FUTURE DIRECTION 5321  
BT ROYAL PRIDE 237G  
MAGS NEW GENERATION 071M  
MAGS FRUITFUL 487M  
GPFF BLAQUE RULON  
AMY JO DHAN 20L  
MAGS REMOTE  
HA LADY 1091

— BW 88 lbs. WW 682 lbs. YW 1206 lbs.

|      | EPD's | %Rank |
|------|-------|-------|
| CED  | 13    | 15    |
| BW   | -0.3  | 25    |
| WW   | 67    | 35    |
| YW   | 94    | 50    |
| MA   | 25    | 55    |
| CEM  | 7     | 35    |
| SC   | 0.50  | 60    |
| ST   | 4     | 65    |
| DOC  | 28    | 10    |
| CW   | 25    | 55    |
| REA  | 0.34  | 65    |
| YG   | 0.23  | >95   |
| MARB | 0.37  | 65    |
| SMTI | 61.65 | 25    |

## CJSL Dauntless 6257D ET

Lim-Flex (56) Bull | HPolled/HBlack | 02.27.14 | CJSL 6257D | LFM 2106173



MAGS WINSTON  
MAGS ZODIAC  
MAGS XANTHOUS  
SILVEIRAS STYLE 9303  
LLJB ABSOLUTE STYLE 3056A  
MAGS WASSAIL

BT CROSSOVER 758N  
MAGS STRAWBERRY  
DHVO DEUCE 132R  
BOHI RHONDA 314R  
GAMBLES HOT ROD  
SILVEIRAS ELBA 2520  
DHVO DEUCE 132R  
MAGS MANDA

— BW 86 lbs. WW 880 lbs. YW 1355 lbs.

|      | EPD's | %Rank |
|------|-------|-------|
| CED  | 13    | 10    |
| BW   | 0.5   | 30    |
| WW   | 76    | 15    |
| YW   | 111   | 15    |
| MA   | 23    | 75    |
| CEM  | 7     | 35    |
| SC   | 0.90  | 25    |
| ST   | 4     | 75    |
| DOC  | 18    | 45    |
| CW   | 32    | 30    |
| REA  | 0.22  | 90    |
| YG   | 0.02  | 95    |
| MARB | 0.24  | 20    |
| SMTI | 61.45 | 15    |

## Riverstone Crown Royal

%Limousin (95) Bull | DPolled/DBlack | 02.01.15 | CSM 51C | CPM 4077450



DHVO DEUCE 132R  
TMCK DURHAM WHEAT 6030X  
MAGS STRAWBERRY PIE  
HSF YOUR FANTASY  
HSF TINKERBELL

GPFF BLAQUE RULON  
AMY JO DHAN 20L  
TNUH BLUE PRINT 245H  
MAGS PIE IN THE SKY  
MAGS SAVAGE  
MAGS REMBRANDT  
CARROUSELS NASDAQ  
NP VIDALIA 164H

— BW 68 lbs. WW -- YW --

|      | EPD's | %Rank |
|------|-------|-------|
| CED  | 6     | 60    |
| BW   | 2.1   | 65    |
| WW   | 73    | 20    |
| YW   | 89    | 60    |
| MA   | 32    | 15    |
| CEM  | 3     | 85    |
| SC   | 1.02  | 25    |
| ST   | 5     | 55    |
| DOC  | 16    | 50    |
| CW   | 20    | 70    |
| REA  | 0.45  | 50    |
| YG   | 0.01  | 90    |
| MARB | -0.16 | 60    |
| SMTI | 45.71 | 60    |

**R&R** PO Box 60097  
MARKETING Nashville, TN 37206

FIRST CLASS  
PRE-SORTED  
PAID  
Montezuma, Iowa  
Permit No. 30

Catalog  
designed  
by  
  
designs by  
*ari*  
[www.designsbyarin.com](http://www.designsbyarin.com)

# TEXAS TRADITION

01.25.18 5:30 p.m. at the Ranch, near Bridgeport, TX