

PINEGAR LIMOUSIN

HARVEST TIME

online sale

OCTOBER 9, 2018

www.pinegarlimousin.com



www.pinegarlimousin.com

OFFERING 15 LOTS

LIMOUSIN & LIM-FLEX

7 Show Heifers • 7 Bred Heifers • 1 Herd-Sire Prospect

BIDDING OPENS ...

7:00 a.m. (CST)

BIDDING CLOSES ...

7:00 p.m. (CST)

SALE-DAY PHONES ...

Ty Heavin.....417.839.5849
Ed Pinegar.....417.833.6784
Randy Ratliff.....615.330.2735

SALE MANAGEMENT ...

RR Randall O. Ratliff • 615.330.2735
MARKETING Randy@RRMktg.com • www.RRMktg.com
(L#2845)

FOR TECHNICAL SUPPORT...

Abby Hinton919.618.8098

CATTLE VIEWING ...

Call/text/email: Ty Heavin at Pinegar Limousin to view the sale offering.

TRUCKING ...

Cattle be picked up at Farm location or we can assist with trucking (buyer pays trucking expense)

All Credit Cards Accepted



ED & CAROL PINEGAR, OWNERS

TOLL FREE 1.877.PINEGAR • 417.833.6784

850 W. Farm Road 56, Springfield, MO 65803
Ty & Susie Heavin, Farm Managers, 417.839.5849

1

AUTO FARRAH 218F ET

LIM-FLEX(75/66.3) • HOMO POLLED (T) • RED • 2/5/2018 • AUTO 218F • LFF2145027



BW • 71
ADJ WW • 787

WULFS XTRACTOR X233X
WZRK CORNERSTONE 2065C
WZRK MISS WIDELOAD 2065Z

LJC MISSION STATEMENT P27
MAGS HANNAH 9726W
MAGS PARKER

WULFS TITUS 2149T
WULFS MYRENE 2332M
BAR JZ WIDELOAD 269W
WZRK MISS MAINSTAY 7020T
LJC LANCER 806
LJC HANNAH 106
LVLS POLLED BLACK JACK
CANE RIDGE POLL ANGEL 318

	CED	BW	WW	YW	MK	CEM	SC	DOC	YG	CW	RE	MB	\$MTI
EPDS	10	2.2	71	110	19	6	1.1	16	-59	16	1.00	-.47	39
%RANK	70	85	10	10	75	55	15	20	50	45	40	85	75

Show Heifer.

- Homozygous polled
- Sired by WZRK Cornerstone 2065C, a son of Wulfs Xtractor X233X.
- Her dam, MAGS Hannah, is a leading donor in the Pinegar program. She is a 50% Lim-Flex daughter of the purebred Red Angus sire, LJC Mission Statement P27, from a purebred Limousin female, MAGS Parker.
- This young female is moderate in her frame, very easy on the eye and one of the top red, high percentage females to be offered from the Pinegar program. She is solid from the ground up, structurally correct and solid made.
- Farrah is very, very thick down her top line and from behind. She combines that thickness with her depth of rib and over all capacity.

2

AUTO FIRST WATCH 255F ET

PERCENTAGE(83/73.7) • HOMO POLLED (T) • HOMO BLACK (T) • 4/25/2018 • AUTO 255F • NXF2149831



BW • 70
ADJ WW • 745

AUTO LUCKY STRIKE 118B
AUTO LUCKY GUY 140D ET
AUTO REBECA 479A

MAGS THE GENERAL
AUTO PIA 245X
AUTO REBECA 292S

LH U HAUL 135U
AUTO LUCKIE 246W
MAGS XYLOPOLIST
AUTO REBECA 292S
AUTO DOLLAR GENERAL 122R
EXLR LUVLY 821M
LESF ASPHALT 9N
EXLR REBECA 1019P

	CED	BW	WW	YW	MK	CEM	SC	DOC	YG	CW	RE	MB	\$MTI
EPDS	12	1.3	67	103	24	6	0.5	10	-.53	17	.92	-.25	46
%RANK	40	60	20	25	25	55	60	70	60	40	55	55	50

Show Heifer.

- Homozygous Polled & Homozygous Black
- Sired by AUTO Lucky Guy 140D, a son of AUTO Lucky Strike 118B who is a past All-American Futurity grand champion bull owned by P Bar S Ranch, Sand Springs, OK.
- Her dam, AUTO Pia 245X, is the leading donor for Nathan Hunt of 4H Limousin, Frohna, MO. AUTO Pia 245X is a daughter of MAGS The General from the can't-miss, AUTO Rebeca 292S.
- AUTO First Watch 255F represents a predictable pedigree and is one you can build a program around.
- This fancy-made, high percentage heifer has so much to offer her new buyer. She is clean, feminine up through her front end, smooth in her shoulder, and long and level down her top line.

3

AUTO FREEDOM 200F ET

LIM-FLEX(75/63.4) • HOMO POLLED (T) • HOMO BLACK (T) • 1/2/2018 • AUTO 200F • LFF2146480



BW • 70
ADJ WW • 824

AUTO CRUZE 132X
AUTO REAL DEAL 150B
AUTO LUCKIE TOO 423Y

CONNELY CONSENSUS 7229
AUTO MABELLINE 267Z
MAGS MANUELA

MAGS THE GENERAL
AUTO REBECA 292S
WLR DIRECT HIT
TYEJ DB SERENITY
CONNELY CONSENSUS
BLUE LILLY OF CONANGA 16
EXLR LIMITED EDITION 765J
AUTO CITY NIGHTS 214H

	CED	BW	WW	YW	MK	CEM	SC	DOC	YG	CW	RE	MB	\$MTI
EPDS	9	2.0	64	97	24	5	0.8	11	-35	18	.57	-.08	49
%RANK	80	80	35	40	25	75	30	60	80	40	95	35	35

Show Heifer.

- Homozygous Polled & Homozygous Black
- Sired by AUTO Real Deal 150B, a son of AUTO Cruze 132X the purebred Limousin bull owned by Pinegar who is not on the open market and has as much popularity as any bull in the breed. Real Deal, the bull owned by Begert Limousin in Texas, is out of the many-time champion female, AUTO Luckie Too 423Y.
- This female's dam, AUTO Mabelline 267Z, is the leading donor for Mikah Edwards of New Bloomfield, MO. Mabelline is a daughter of Connealy Consensus 7229 from the immortal, MAGS Manuela.
- This young heifer is appealing from the side profile, heavy in her foot and bone structure. She has a tremendous amount of depth of rib, mass and volume

4

AUTO FREIDA 221F ET

LIM-FLEX(50/44.9) • HOMO POLLED (T) • HOMO BLACK (T) • 2/15/2018 • AUTO 221F • LFF2145147



BW • 68
ADJ WW • 791

S A V BRILLIANCE 8077
PVF INSIGHT 0129
P V F MISSIE 790

DHVO DEUCE 132R
SBLX XTRA SPECIAL
MAGS MANUELA

S A V BISMARCK 5682
S A V BLACKCAP MAY 5270
P V F NEW HORIZON 001
P V F MISS RAPTOR 024
GPFF BLAQUE RULON
AMY JO DHAN 20L
EXLR LIMITED EDITION 765J
AUTO CITY NIGHTS 214H

	CED	BW	WW	YW	MK	CEM	SC	DOC	YG	CW	RE	MB	\$MTI
EPDS	10	1.6	72	114	22	6	1.1	14	-36	50	1.28	-.03	54
%RANK	70	70	10	10	45	55	15	35	80	1	5	30	25

Show Heifer.

- Homozygous Polled & Homozygous Black
- Sired by PVF Insight 0129, the purebred Angus son of S A V Brilliance. One thing in our Limousin breed that we know for certain is PVF Insight has worked very well.
- Her dam, SBLX Xtra Special, is the proven daughter of DHVO Deuce 132R from the deceased and elite donor, MAGS Manuela.
- AUTO Freida 221F ranks in the top 1% for Gest and CW, top 10% for WW, YW and TM, and top 15% for SC.
- This young, open show heifer is one of the finest to sell in a long time. She is nearly perfect anyway you look at her. She is solid in her footing, attractive up through her head and neck, and perfect in her side profile.

5

AUTO FELIS 231F ET

LIM-FLEX(50/41.5) • HOMO POLLED (T) • HOMO BLACK (T) • 3/1/2018 • AUTO 231F • LFF2147735



BW • 67
ADJ WW • 730

S A V BRILLIANCE 8077
PVF INSIGHT 0129
PVF MISSIE 790

LESF ASPHALT 9N
TYEJ DB SERENITY
TYEJ DB SIZZLE

S A V BISMARCK 5682
S A V BLACKCAP MAY 5270
P V F NEW HORIZON 001
P V F MISS RAPTOR 024
GPFF BLAQUE RULON
GPFF EXTRA SWEET ELITE
EXLR GATEWAY 396K
MOSR SIZZLE 037K

	CED	BW	WW	YW	MK	CEM	SC	DOC	YG	CW	RE	MB	\$MTI
EPDS	10	2.0	63	99	20	4	0.8	12	-.34	39	1.09	-.03	51
%RANK	70	80	40	35	65	90	30	50	80	3	25	30	30

Show Heifer.

- Homozygous Polled & Homozygous Black
- Sired by the popular S A V Brilliance son, PVF Insight 0129.
- From the elite Wies/Double B donor, TYEJ DB Serenity who was bred in the Jones-Benson program and is a daughter of LESF Asphalt 9N. Serenity also is the dam of so many national champions—AUTO Luckie and AUTO Luckie Too, and grandam of AUTO Real Deal.
- This young show heifer is a maternal sister to those listed above and several others that carry the AUTO prefix.
- AUTO Felis 231F is so gorgeous in her design and her profile. She follows the likes of her siblings in that they are stunning in their look and profile.

6

AUTO FROSTY 246F ET

LIM-FLEX(50/45) • HOMO POLLED (T) • HOMO BLACK (T) • 4/17/2018 • AUTO 246F • LFF2146438



BW • 67
ADJ WW • 723

EXAR DENVER 2002B
AUTO POWER LINE 135B ET
EF YADDA YADDA 809Y

DAMERON FIRST CLASS
AUTO ANGELINA 225A
MAGS MANUELA

EXAR UPSHOT 0562B
EXAR ROYAL LASS 1067
DHVO DEUCE 132R
MAGS RUFFLES
EXG RS FIRST RATE S903 R3
DAMERON NORTHERN MISS 311
EXLR LIMITED EDITION 765J
AUTO CITY NIGHTS 214H

	CED	BW	WW	YW	MK	CEM	SC	DOC	YG	CW	RE	MB	\$MTI
EPDS	11	2.6	66	101	24	7	0.9	12	-28	32	.76	.14	57
%RANK	55	90	25	30	25	35	25	50	90	10	75	15	15

Show Heifer.

- Homozygous Polled & Homozygous Black
- Sired by AUTO Power Line 135B, the huge numbered son of EXAR Denver from the elite donor, EF Yadda Yadda 809Y.
- Her dam is a daughter of Dameron First Class from the elite, MAGS Manuela. She is a full sister to breed great SBLX Fist Class owned by Southern Cattle Co., Milam, P Bar S Ranch and Stowers Limousin. AUTO Angelina 225A is a leading donor for Freed's Livestock and Fosdick of Illinois.
- AUTO Frosty 246F is one amazing show-heifer prospect. She is moderate in framed, easy in her condition and well made. She is thick, big middled, and desirable in her design and profile.
- She ranks in the top 1% for Gest, top 10% for CW, top 15% for Marb and \$MTI, top 20% for TM, and top 25% for WW, Milk and SC.

7

AUTO FARA 217F ET

PERCENTAGE(81/70.7) • HOMO POLLED (T) • HOMO BLACK (T) • 2/6/2018 • AUTO 217F • NXF2147734



BW • 68
ADJ WW • 706

MAGS ROBIN HOOD 276Y
AUTO ACE VENTURA 557C
AUTO MIGHTY GIRL 670W

WLR DIRECT HIT
AUTO LUCKIE TOO 423Y
TYEJ DB SERENITY

MAGS UR A ROBIN
MAGS UNDERFOOT
MYTTY IN FOCUS
AUTO BLACK TAFFY 223T
KRVN NASKAR 013N
MAGS NIGHT AMBUSH
LESF ASPHALT 9N
TYEJ DB SIZZLE

	CED	BW	WW	YW	MK	CEM	SC	DOC	YG	CW	RE	MB	\$MTI
EPDS	10	1.8	60	90	26	6	1.0	9	-.52	7	0.8	-.28	42
%RANK	70	75	55	60	10	55	15	80	60	80	70	55	65

Show Heifer.

- Homozygous Polled & Homozygous Black
- Sired by AUTO Ace Ventura 557C, a son of MAGS Robin Hood 276Y out of AUTO Mighty Girl 670W.
- AUTO Fara 217F is from the elite Pinegar donor, AUTO Luckie Too 423Y who was a many-time show champion and one of the finest to ever carry the AUTO prefix. She is a daughter of WLR Direct Hit from TYEJ DB Serenity.
- This well-bred female stands upright and is appealing from any angle you look at her. She is level and square from her hooks to her pins, fluid in her movement and has an amazing look of promise.

8

AUTO CHOICE 438D ET

LIM-FLEX(68/60.9) • HOMO POLLED (T) • HOMO BLACK (T) • 9/16/2016 • AUTO 438D • LFF2122409



BW • 68
ADJ WW • 548
ADJ YW • 814
ADJ FAT • .14
ADJ REA • 9.28
ADJ IMF • 2.86

MAGS YIP
AUTO AMMO 135A
AUTO REBECA 292S

DHVO DEUCE 132R
PBRS DUTCHES 790X
SEDGWICKS DUTCHES 2280

MAGS THE GENERAL
AUTO CARMINDA 656S
LESF ASPHALT 9N
EXLR REBECA 1019P
GPFF BLAQUE RULON
AMY JO DHAN 20L
RR 9440 SCOTCH CAP 1483
CIRCLE 5 DUTCHESS 280

	CED	BW	WW	YW	MK	CEM	SC	DOC	YG	CW	RE	MB	\$MTI
EPDS	11	1.5	63	98	22	6	0.9	10	-.34	22	.59	-.17	46
%RANK	55	65	40	35	45	55	30	70	80	25	95	45	50

**Due 11.6.18 to HBRL Deluxe Package 6114D
(56% LF, HP/HB son of MAGS Zodiac)**

- Homozygous Polled & Homozygous Black
- Sired by AUTO Ammo 135A, a son of MAGS Yip from the ever-predictable Pinegar donor, AUTO Rebecca 292S.
- Her dam, PBRS Dutches 790X, is one of the all-time great donors to ever step foot at Pinegar Limousin. She is a daughter of the national champion DHVO Deuce and from a premier Angus female. She has produced countless champions, including the recent 2018 All-American Futurity Grand Champion Bull, AUTO King David 120E.
- AUTO Choice 438D is an appealing first-calf heifer who sells bred to the big-numbered, HBRL Deluxe Package 6114D.

9

AUTO FLASH 444D ET

LIM-FLEX(75/66.6) • HOMO POLLED (T) • RED • 9/22/2016 • AUTO 444D • LFF2122410



BW • 70
ADJ WW • 527
ADJ YW • 789
ADJ FAT • .18
ADJ REA • 10.6
ADJ IMF • 3.96

LVLS SECRET WEAPON 4408K
CJSL WINDFALL 9072W
CJ'S MS ARROWHEAD 456P

LJC MISSION STATEMENT P27
MAGS HANNAH 9726W
MAGS PARKER

LVLS FARMER 4G
LVLS 408H
DVFC ARROWHEAD 1004J
CJ'S MAGDELINE 252M
LJC LANCER 806
LJC HANNAH 106
LVLS POLLED BLACK JACK
CANE RIDGE POLL ANGEL 318

	CED	BW	WW	YW	MK	CEM	SC	DOC	YG	CW	RE	MB	\$MTI
EPDS	8	2.1	64	102	29	4	1.1	14	-.47	21	.79	-.21	46
%RANK	90	80	35	25	2	90	15	35	65	30	75	50	50

Due 11.20.18 to GLDL Polled Promise 630D (Polled Fullblood son of Posthaven Polled Yellowstone)

- Sired by CJSL Windfall 9072W, a son of LVSL Secret Weapon who has made a big impact on the business. He is big footed, sound and well made. This daughter of his is from MAGS Hannah.
- MAGS Hannah is a leading Pinegar donor who is a result of the blending of the best in purebred Red Angus with the best in purebred Limousin.
- This red, homozygous polled female is solid in her footing, sound in her makeup and appealing from all angles.
- She ranks in the top 1% for Gest, top 2% for Milk and top 3% for TM.
- She sells bred to the Polled Fullblood bull, GLDL Polled Promise 630D, a son of Posthaven Polled Yellowstone.

10

AUTO PICKER 491D ET

LIM-FLEX(75/66.8) • HOMO POLLED (T) • RED • 11/10/2016 • AUTO 491D • LFF2123622



BW • 68
ADJ WW • 589
ADJ YW • 872
ADJ FAT • .18
ADJ REA • 11.74
ADJ IMF • 2.87

WULFS XTRACTOR X233X
WZRK ATLAS 8012A
WZRK MISS NASCAR 8012U

LJC MISSION STATEMENT P27
MAGS ANGEL 9748W
MAGS PARKER

WULFS TITUS 2149T
WULFS MYRENE 2332M
WULFS NASCAR G949N
WZRK MISS F LINER 1021L
LJC LANCER 806
LJC HANNAH 106
LVLS POLLED BLACK JACK
CANE RIDGE POLL ANGEL 318

	CED	BW	WW	YW	MK	CEM	SC	DOC	YG	CW	RE	MB	\$MTI
EPDS	9	2.1	70	109	21	5	1.1	18	-.52	20	.88	-.25	46
%RANK	80	80	15	15	55	75	10	5	60	35	60	55	45

Due 10.6.18 to B Bar Cognac 1b (PB, HP son of RPY Paynes Derby)

- Sired by WZRK Atlas, a son of Wulfs Xtractor X233X and was the once \$30,000 top-selling bull in the Wieczorek herd in South Dakota.
- Her dam, MAGS Angel 9748W, is a daughter of LJC Mission Statement P27 from the purebred Limousin female, MAGS Parker.
- This female is a very well made and has that super productive look.
- She ranks in the top 1% for Gest, top 10% for SC, top 5% for DC and top 15% for WW and YW.
- Her resulting calf will be a red purebred sired by the leading red purebred sire, B Bar Cognac.

11

AUTO DATMA 484D ET

LIM-FLEX(50/43) • HET POLLED (T) • BLACK • 10/25/2016 • AUTO 484D • LFF2123618



BW • 68
ADJ WW • 613
ADJ YW • 910
ADJ FAT • .21
ADJ REA • 12.92
ADJ IMF • 3.67

DAMERON FIRST CLASS
EXAR CLASSEN 1422B
EXAR PRINCESS 2006

AUTO BLACK DAKOTA 129J
CARROUSELS PEACHES 4330P
ELMW GINNIE P58G

EXG RS FIRST RATE S903 R3
DAMERON NORTHERN MISS 311
EXAR LUTTON 1831
GREENS PRINCESS 1012
EXLR DAKOTA 353G
DFLC JET SET BPC 34Y
TCDT MR T.D'S POWER PACK
ELMW POLLED ECSTASY 67E

	CED	BW	WW	YW	MK	CEM	SC	DOC	YG	CW	RE	MB	\$MTI
EPDS	10	2.4	65	100	21	8	0.5	9	-.29	28	.74	.11	56
%RANK	70	85	30	30	55	20	75	80	85	15	80	20	15

Due 10.6.18 to AUTO Dollar General 122R (PB, HP/HB son of LVLS Secret Weapon)

- This female is a result of the blending of the best of purebred Angus with the best of purebred Limousin. She is a daughter of EXAR Classen 1422B, a son of Dameron First Class.
- Her dam, Carrousel Peaches 4330P, is one of the leading purebred Limousin donors in the strong lineup of donors at Pinegar Limousin. She is a daughter of AUTO Black Dakota 129J from the many-time gold medal of excellence donor, ELMW Ginnie, and is a maternal sister the national champion Carrousel Pina Colada.
- AUTO Datma 484D scanned a 12.12 for REA and 3.47 for IMF.
- She ranks in the top 1% for Gest, top 15% for CW and \$MTI, top 20% for CEM and Marb.

12

AUTO SUSANNA 284D ET

LIM-FLEX(67/62.3) • HET POLLED (T) • HOMO BLACK (T) • 9/17/2016 • AUTO 284D • LFF2123664



BW • 72
ADJ WW • 630
ADJ YW • 848
ADJ FAT • .23
ADJ REA • 13.37
ADJ IMF • 3.17

S A V PIONEER 7301
TMCK HYDRAULIC 17Y
HSF WALL OF FAME

MAGS SAVAGE
MAGS WALLPAPER
MAGS GRETCHEN

SAV FINAL ANSWER 0035
S A V BLACKBIRD 5297
RPY PAYNES SIGNAL 6S
HSF PENTHOUSE PIN-UP
GPFF BLAQUE RULON
MAGS MANDA
COLE FIRST DOWN 46D
MAGS BENJI

	CED	BW	WW	YW	MK	CEM	SC	DOC	YG	CW	RE	MB	\$MTI
EPDS	10	2.5	68	103	21	7	0.5	8	-.39	15	.75	.03	55
%RANK	70	90	20	25	55	35	60	85	75	50	80	25	20

**Due 11.1.18 to HBRL Deluxe Package 6114D
(56% LF, HP/HB son of MAGS Zodiac)**

- Sired by TMCK Hydraulic 17Y, a son of S A V Pioneer from the elite Canadian donor, HSF Wall of Fame.
- Her dam ,MAGS Wallpaper, is the leading Massey and Agri-Xposure donor. She is a daughter of MAGS Savage and from the famed donor, MAGS Gretchen.
- This well-made, gorgeous female scanned a 13.33 for REA and 3.16 for IMF.
- Here resulting calf, sired by HBRL Deluxe Package 6114D, will be 61% Lim-Flex, double polled, homozygous black, and we think really good. Deluxe Package the partnership bull with Pinegar and Buck Ridge Cattle.

13

AUTO POP UP 667D

LIM-FLEX(50/45) • HOMO POLLED (T) • RED • 10/15/2016 • AUTO 667D • LFF2123650



BW • 60
ADJ WW • 559
ADJ YW • 731
ADJ FAT • .23
ADJ REA • 9.76
ADJ IMF • 4.28

BUF CRK THE RIGHT KIND U199
5L RIGHT KIND 203-245Z
5L HAZEL 1821-203

ENGD YARD MACHINE 1023Y
JJPA BLUE BELL 076B ET
EXLR PERFECT MARGARITA

BUF CRK LANCER R017
BUF CRK SHOSHONE R353
5L NORSEMAN KING 2291
5L HAZEL 45-1821
WULFS UPGRADE 0500U
JONK POLL UNIQUE 70U
JCL LODESTAR 27L
MDPL PERFECT MARGARITA

	CED	BW	WW	YW	MK	CEM	SC	DOC	YG	CW	RE	MB	\$MTI
EPDS	9	1.5	58	93	28	6	-	9	-.29	14	.48	.03	51
%RANK	80	65	65	50	3	55	-	80	85	50	>95	25	30

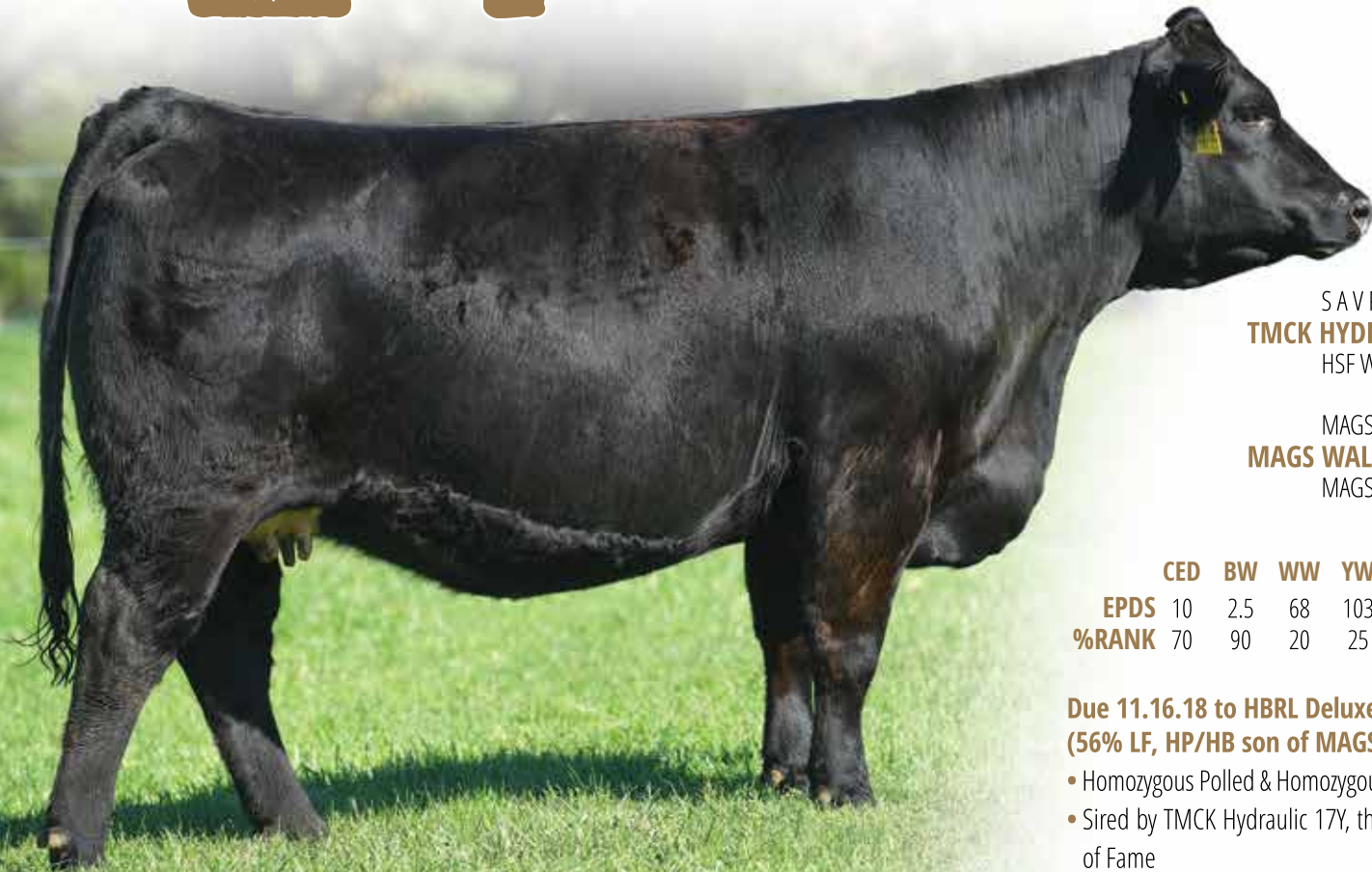
Due 11.15.18 to GLDL Polled Promise 630D (Polled Fullblood son of Posthaven Polled Yellowstone)

- Sired by SL Right Kind 203-245Z, a purebred Red Angus bull by Buf Crk The Right Kind U199.
- Her dam is the ENGD Yard Machine 1023Y daughter, JJPA Blue Bell 076B.
- This dark, cherry-red female is truly something special. She is made right, sound structured and thick, with the right amount of rib shape and volume.
- AUTO Pop Up 667D scanned a 4.13 for IMF and 9.16 for REA.
- She ranks in the top 3% for Milk, top 15% for TM and top 25% for Marb.
- Her resulting red, homozygous polled, 75% Lim-Flex calf will be worth the investment in this female.

14

AUTO 411D ET

LIM-FLEX(67/62.3) • HOMO POLLED (T) • HOMO BLACK (T) • 9/25/2016 • AUTO 411D • LFF2123666



BW • 74
ADJ WW • 626
ADJ YW • 962
ADJ FAT • .31
ADJ REA • 15.41
ADJ IMF • 3.94

S A V PIONEER 7301
TMCK HYDRAULIC 17Y
HSF WALL OF FAME

MAGS SAVAGE
MAGS WALLPAPER
MAGS GRETCHEN

SAV FINAL ANSWER 0035
S A V BLACKBIRD 5297
RPY PAYNES SIGNAL 6S
HSF PENTHOUSE PIN-UP
GPFF BLAQUE RULON
MAGS MANDA
COLE FIRST DOWN 46D
MAGS BENJI

	CED	BW	WW	YW	MK	CEM	SC	DOC	YG	CW	RE	MB	\$MTI
EPDS	10	2.5	68	103	21	7	0.5	8	-.42	16	.88	.05	56
%RANK	70	90	20	25	55	35	60	85	70	45	60	25	20

**Due 11.16.18 to HBRL Deluxe Package 6114D
(56% LF, HP/HB son of MAGS Zodiac)**

- Homozygous Polled & Homozygous Black
- Sired by TMCK Hydraulic 17Y, the son of S A V Pioneer from the Canadian donor, HSF Wall of Fame
- Her dam, MAGS Wallpaper, is the many-time champion and now leading Massey/Agri-Xposure donor.
- She scanned a 14.69 for REA and 3.76 for IMF.
- AUTO 411D is made as nice as any buyer would want one. She is sound in her movement, angular in her front end, strong and level down her top line, and appealing out her hooks to her pins.

15

AUTO REAL PRIME 121E ET

PUREBRED(100/86.1) • HOMO POLLED (T) • HET BLACK (T) • 3/9/2017 • AUTO 121E • NPM2142812



BW • 68
ADJ WW • 614
ADJ YW • 1,187
ADJ FAT • .36
ADJ REA • 17.55
ADJ IMF • 3.05

AUTO CRUZE 132X
AUTO REAL DEAL 150B
AUTO LUCKIE TOO 423Y

JCL LODESTAR 27L
AUTO MANUELA 298S
MAGS MANUELA

MAGS THE GENERAL
AUTO REBECA 292S
WLR DIRECT HIT
TYEJ DB SERENITY
HUNTS HI-LITER 245G
LOGAN'S CHEERLEADER 280G
EXLR LIMITED EDITION 765J
AUTO CITY NIGHTS 214H

	CED	BW	WW	YW	MK	CEM	SC	DOC	YG	CW	RE	MB	\$MTI
EPDS	10	2.0	65	102	23	6	0.6	9	-.52	19	.77	-.36	41
%RANK	70	80	30	25	30	55	50	80	60	35	75	70	70

Herd-Sire Prospect!

- AUTO Real Prime 121E is sired by the leading Pinegar and Begert Ranch partnership bull, AUTO Real Deal 150D, a son of AUTO Cruze 132Z from the many-time champion, AUTO Luckie Too 423Y.
- His dam, AUTO Manuela 298S, is the Pinegar and Counsil Family partnership donor. She is a daughter of the multiple trait-leading sire, JCL Lodestar 27L from the famed, MAGS Manuela.
- This beef bull is a big-league purebred herd-sire prospect from the heart of the Pinegar program.
- Real Prime is packed full of muscle and power. He is solid on the ground and upright in his stance. We have no doubt he will sire a uniform calf crop for his new owner.