



Offering 24 Lots OF PREMIUM LIMOUSIN & LIM-FLEX GENETICS

The entire auction will be by slide presentation.

**WEDNESDAY,
JULY 5, 2017 • 6 p.m.**

*in conjunction with the
All-American Limousin Futurity
held at the Nebraska State Fair grounds,
Grand Island, NE, in the VIP Lounge.*

MARKETING TEAM:



Ken Holloway
mobile: 580/581-7652
acs@americancattleservices.com



Mark Smith
mobile: 515/229-5227
grgenetics@aol.com



Kiley McKinna
mobile: 402/350-3447
mcmarketingsales@aol.com



Randall O. Ratliff
mobile: 615/330-2735
randy@rrmktg.com

AUCTIONEER & LIVESTOCK PRESS REPRESENTATIVES:

C.K. "Sonny" Booth.....Auctioneer
Andy Rest..... *Limousin Today*
Corey Wilkins..... *Limousin Today*

*All lots sell under the standard
terms and conditions of the
North American Limousin Foundation.*

Contributors:

AGRI-EXPOSURE LLC
PO Box 286
Harrodsburg, KY 40330
(540) 280-5388

ATAK LIMOUSIN
436 140th St.
Avon, IL 61415
(309) 333-0029

COYOTE HILLS RANCH
23998 State Hwy. 5
Chattanooga, OK 73528
(580) 581-7652

COLT CUNNINGHAM
PO Box 146
Rose, OK 74364
(918) 629-9382

DIAMOND HILL CATTLE CO.
1520 Camden Way
Nichols Hills, OK 73116
(405) 520-5846

EDWARDS LAND & CATTLE CO.
290 Willard Edwards Rd.
Beulaville, NC 28518
(910) 290-1424

GLENDENNING J BAR J RANCH
24300 McDonald Dr.
Lebanon, MO 65536
(417) 588-6121

GRAVEN LAND & CATTLE
26525 Hwy. AA
Lebanon, MO 65536
(417) 594-0257

HALL CATTLE CO.
P.O. Box 168
Sweetwater, TX 79556
(325) 235-4345

LAWRENCE FAMILY LIMOUSIN
P.O. Box 299
Anton, TX 79313
(806) 790-2535

LINHART LIMOUSIN
27195 175th St.
Leon, IA 50144
(641) 340-1306

MASSEY LIMOUSIN
80 Sublimity School Rd.
London, KY 40744
(606) 682-2126

P BAR S RANCH
11720 W Overlook Dr.
Sand Springs, OK 74063
(918) 346-2438

RIVERSIDE VALLEY FARM
4403 Buffalo Rd.
Hohenwald, TN 38462
(931) 628-3212

TUBMILL CREEK FARMS
152 Florida Lane
New Florence, PA 15944
(412) 996-1715

WHITE VALLEY RANCH
12555 Hwy. 69 N
Adair, OK 74330
(918) 803-1787

WULF CATTLE
26406 470th Ave.
Morris, MN 56267
(320) 392-5802



MAGS AVIATOR
Son of Lot 1



WULFS XCLUSIVE 2458X
Full sib to Lot 2



WULFS DEFEND K909D
Son of Lot 2



1 MAGS XTRA REST

LIM-FLEX 68% COW 2/5/2010 HOMO BLACK (P1) MAGS 679X HOMO POLLED (T) LFF1958293

GPFF BLAQUE RULON
DHVO DEUCE I32R
AMY JO DHAN 20L
MAGS REMOTE
MAGS UNREST
HA LADY 1091

EPDs
CD: 8
BW: 1.8
WW: 74
YW: 105
MA: 27
CM: 6
SC: 1.1
DC: 21
YG: .09
CW: 34
RE: .16
MB: .23
\$MI: 60

BW: 75 ADJ WW: 704 ADJ YW: 1,075 ADJ REA: 11.36 ADJ IMF: 5.30

OFFERED BY: LINHART LIMOUSIN

Selling one-half embryo interest, no possession; or the option to double and take 100% interest and possession.

Worthy of leading off this exceptional sale offering is a tremendous donor who is the dam of the flawless patterned, highly popular, AI sire, MAGS Aviator! ELITE, it's a word fitting of MAGS Xtra Rest, she's double homozygous, exceptionally well designed, huge numbered and predictable! Numerically, she ranks in the top 20% or better for WW, YW, TM, SC, CW, MB and \$MI. Folks the bottom line is this is a unique buying opportunity to invest in one of the breed's truly great females. Don't miss your chance to own Xtra Rest, July 5! She sells open and ready to flush

2 WULFS WORTH IT ALL 9108W

PUREBRED COW 4/1/2009 RED FI 9108W POLLED NPF1936241

JCL LODESTAR 27L
WZRK PRIMESTAR 861P
WZRK MISS P ULTRA 861F
LVLS POLLED BLACK JACK
WULFS MISSIVE 2258M
WULFS FAITH 6501F

EPDs
CD: 12
BW: -0.7
WW: 65
YW: 102
MA: 34
CM: 12
SC: 0.3
DC: 14
YG: -.27
CW: 30
RE: .42
MB: -.14
\$MI: 47

BW: 72 ADJ WW: 609 ADJ YW: 889ADJ REA: 10.54 ADJ IMF: 3.17

OFFERED BY: WULF CATTLE

Selling the right to flush to the bull of buyer's choice, guaranteed 5 embryos, maximum of 10. Buyer pays expenses.

This is a rare opportunity to invest in the right to flush Wulfs Worth It All 9108W, one of the newest additions to our progressive donor program. Note, Wulf's Worth It All is not only the full sister to the famed Wulfs Xclusive A.I. sire, she's also the dam to the 2017 Wulf Opportunity Sale top-selling bull, Wulfs Defend K909D ET, who sold to Bullis Creek Ranch, and to the highly popular sire Wulfs Calling Card K904C ET who sold in our 2016 sale to Hunt Limousin Ranch. The proof is in the pudding with this elite donor who's homozygous polled, huge-numbered, predictable and proven to be profitable. Invest with confidence July 5 in this exciting genetic opportunity.



LOT 3



LOT 4

3 CELL 548 IC ET

PUREBRED COW 9/11/2015 HOMO BLACK (P2) CELL 548 IC HOMO POLLED (PENDING) NPF2094918

DHVO DEUCE 132R
MAGS WAZOWSKI
BOHI RED ROBIN 282R
JCL LODESTAR 27L
AUTO EXCEPTIONAL 282S
MINE PLD EXCEPTIONAL 981E

EPDs	AI
CD: 8	7
BW: 2.3	1.9
WW: 76	75
YW: 114	115
MA: 29	25
CM: 5	4
SC: 0.9	1.2
DC: 15	17
YG: -.01	-.04
CW: 36	39
RE: .72	.59
MB: .19	.18
\$MI: 60	60

BW: 75 ADJ WW: 590 ADJ YW: 1,084 ADJ REA: 14.04 ADJ IMF: 2.99

OFFERED BY: LINHART LIMOUSIN

Due 11/11/17 to TASF Believe 854B.

This well-designed, double homozygous (pending), big-numbered PUREBRED is a truly unique buying opportunity. Stout best describes this big-footed, free-moving, long-fronted female who has the extra depth of body and a big, square hip. She ranks in the top 25% or better in 8 economically relevant traits—WW, YW, MK, TM, CW, RE, MB and \$MI. Also note, she is by the highly predictable MAGS Wazowski A.I. sire and out of a high-powered purebred donor, AUTO Exceptional 282S, who has done an amazing job in production. This is a sure-fire donor female in the making and one who would be an asset to your genetic arsenal for years to come. See current video at www.LinhartLimousin.com

4 MJ DAISY 15D ET

LIM-FLEX 75% COW 9/11/2016 HOMO BLACK (T) MJMB 15D HET POLLED (T) LFF2117279

DA TRAVELER 004 703
EF XCESSIVE FORCE
CFLX MOLLYS IMAGE
GPFF BLAQUE RULON
SBLX TRUE LOVE 918T
MAGS MANUELA

EPDs
CD: 8
BW: 1.2
WW: 56
YW: 82
MA: 19
CM: 8
SC: 1.4
DC: 16
YG: .01
CW: 20
RE: .09
MB: .16
\$MI: 53

BW: 75

OFFERED BY: MARJON FARMS

MJ Daisy will make you do a double-take with her phenotypic style and overall balance. Then when you study her lineage, you will be sold. Her dam, SBLX True Love, an own daughter of the great MAGS Manuela, has been a mainstay donor in the MarJon program producing the great ones no matter how she's mated. Her sire is a past national champion who sires champions. MJ Daisy combines the best of the best in a package that will work in today's industry.



LH BELLE 015B

Dam of Lot 5



COLE ARCHITECT 08A / Sire of Lot 5

5 FOUR EMBRYOS

LIM-FLEX 72% DBL BLACK HOMO POLLED

MRL X-RATED 014X
COLE ARCHITECT 08A
 COLE MISS LODESTAR 826U
 EXAR UPSHOT 0562B
LH BELLE 015B
 PBRSTOUCH ME GENTLY 798T

EPDs	
CD:	6
BW:	2.5
WW:	104
YW:	146
MA:	24
CM:	6
SC:	1.2
DC:	14
YG:	-.02
CW:	56
RE:	.83
MB:	-.02
\$MI:	61

OFFERED BY: COLT CUNNINGHAM

The Architect calves in the 2017 NWSS Coleman pen and carload were highly popular. Not only did breeders like their EPDs and soundness, they appreciated their rib shape, performance and muscling. Four of the top-selling bulls in Coleman's 2017 sale were Architect sons. This mating of Architect x Belle has been drafted with greatness in mind.



LH BELLE 015B

Dam of Lot 6



MAGS AVIATOR / Sire of Lot 6

6 FOUR EMBRYOS

LIM-FLEX 55% HOMO BLACK HOMO POLLED

MAGS WINSTON
MAGS AVIATOR
 MAGS XTRA REST
 EXAR UPSHOT 0562B
LH BELLE 015B
 PBRSTOUCH ME GENTLY 798T

EPDs	
CD:	11
BW:	0.6
WW:	71
YW:	108
MA:	28
CM:	8
SC:	0.8
DC:	22
YG:	.12
CW:	36
RE:	.53
MB:	.42
\$MI:	66

OFFERED BY: COLT CUNNINGHAM

This mating combination will soar high in your program. Aviator is contributing style and balance to his offspring, including the top-selling heifer in the 2017 National Sale who won the 2017 Texas Field Day for Colton Barton. When paired up with the show-stopper LH Belle, you'll be winning your share of purple banners.



DHIL TOUCH ME GENTLY 5798C

Dam of Lot 7



HA COWBOY UP 5405 / Sire of Lot 7

7 FOUR EMBRYOS

LIM-FLEX 40% HOMO BLACK HOMO POLLED

HA OUTSIDE 3008
HA COWBOY UP 5405
 HA BLACKCAP LADY 1602
 MAGS AVIATOR
DHIL TOUCH ME GENTLY 5798C
 PBRSTOUCH ME GENTLY 798T

EPDs	
CD:	12
BW:	-.03
WW:	75
YW:	125
MA:	29
CM:	9
SC:	-
DC:	-
YG:	-.10
CW:	17
RE:	.25
MB:	.33
\$MI:	66

OFFERED BY: TUBMILL CREEK FARMS

We guarantee a minimum of 1 pregnancy if a certified embryologist is utilized. On offer is the first opportunity to invest in genetics by the widely popular, high-percentage DHIL Touch Me Gently female who topped the 2016 Select Breeders Sale at \$20,000 where she was admired for her striking look, structural integrity and flawless balance! On the paternal side we have the \$350,000 A.I. sire who is the hottest bull in the Angus business, HA Cowboy Up. If you're wanting a different twist, seeking big numbered, homozygous genetics that hold the potential to create that next great one, invest in these eggs sale day.



FOUR EMBRYOS

LIM-FLEX 64%

HOMO BLACK

HOMO POLLD

- MAGS WINSTON
- **MAGS ZODIAC**
- MAGS XANTHOUS
- LH U HAUL 135U
- **AUTO BLISS 265Y**
- WLR UGLY BETTY 432U

EPDs	
CD:	11
BW:	2.1
WW:	78
YW:	132
MA:	26
CM:	9
SC:	0.8
DC:	17
YG:	.02
CW:	52
RE:	.38
MB:	.40
\$MI:	68

OFFERED BY: HALL CATTLE CO. / LAWRENCE FAMILY LIMOUSIN / COYOTE HILLS RANCH / DIAMOND HILL CATTLE CO.

The Zodiac progeny have been popular for good reason. Their performance, depth of rib with good definition of muscle and eye appeal are contributing factors to his popularity. Don't pass up this opportunity to own double homozygous mating with proven parentage.



Morris

AUTO BLISS 265Y

Dam of Lot 8



MAGS ZODIAC / Sire of Lot 8



FOUR EMBRYOS

LIM-FLEX 58%

HOMO BLACK

HOMO POLLED

- MAGS APPLESEED
- **MAGS CABLE**
- MAGS ZEQUIN
- LH U HAUL 135U
- **AUTO BLISS 265Y**
- WLR UGLY BETTY 432U

EPDs	
CD:	10
BW:	1.5
WW:	76
YW:	115
MA:	30
CM:	8
SC:	1.4
DC:	15
YG:	.10
CW:	39
RE:	.50
MB:	.43
\$MI:	68

OFFERED BY: HALL CATTLE CO. / LAWRENCE FAMILY LIMOUSIN / COYOTE HILLS RANCH / DIAMOND HILL CATTLE CO.

These embryos are from the 2012 American Royal Lim-Flex grand champion female and 2013 National Western Lim-Flex division 3 champion female, AUTO Bliss, who is a flushmate to the 2012 National Junior Limousin Show grand champion Lim-Flex female for Adam Griffith, AUTO Betty 266Y.

The sire of this mating, MAGS Cable, was the lead bull in the Magness Land & Cattle grand champion carload at the 2017 National Western.

Bliss has produced seedstock herd sires that performed above their contemporaries. Her sons have been selected by Sun Up, Coy Cattle Co., Heldermon Limousin and Kevin Fulton Limousin for use in their programs. In addition, several young daughters appear to be donor prospects.



Morris

AUTO BLISS 265Y

Dam of Lot 9



MAGS CABLE / Sire of Lot 9



THREE EMBRYOS

PERCENTAGE 88%

DBL BLACK

DBL POLLED

- WZRK PRIMESTAR 861P
- **WULFS XCLUSIVE 2458X**
- WULFS MISSIVE 2258M
- DHVO DEUCE 132R
- **DJ XECUTIVE PRIVILEGE**
- DJ UPTOWN GIRL

EPDs	
CD:	6
BW:	3.9
WW:	81
YW:	124
MA:	26
CM:	7
SC:	1.0
DC:	21
YG:	.04
CW:	51
RE:	.25
MB:	.18
\$MI:	61

OFFERED BY: LAWRENCE FAMILY LIMOUSIN

A great mating with a storied beginning that continues to unfold. Xecutive Privilege was the CornerPost heifer at the 2011 National Sale donated by DJ Limousin of Port Orchard, Washington. Her first calf was the reserve grand champion heifer at the 2013 FWSS. A daughter by LH U Haul topped the 2015 National Sale at \$20,000 to Madison Culpepper; and a daughter by Ypsilanti topped the 2016 National Sale going to Tubmill Creek Farms.

Twenty-five calves recorded to date have impressive performance data. Heifer calves averaged 73-lb. BW and 708-lb. VVW; and the bull calves averaged 75-lb. BW and 769-lb. VVW and 1,351-lb. YW. Her sons, LFL Buddy, LFL Boomerrang and LFL Cosmo, have been class winners at the NWSS and Cosmo was a division champion in 2016 and 2017, as well as division champion at the 2016 AALF. LFL Buddy was the top-selling bull at the 2015 Hall-CHR Bull Sale going to Just-A-Mere Farms in Ohio.

The 2017 reserve grand champion pen of Lim-Flex bulls in Denver where her sons by LH Advantage.



DJ XECUTIVE PRIVILEGE

Dam of Lot 10



WULFS XCLUSIVE 2458X / Sire of Lot 10

When we say this beautifully designed, massive, deep-ribbed, sound-made Deuce daughter is one of the best donors in the breed we can offer proof.

The Wulf Xclusive bull is not only doing a masterful job for Symens Brothers, but around the breed as well. This is a can't-miss mating.



AUTO CHLOE 264C

Dam of Lot 11



AUTO DIRECT DRIVE 107D / Sire of Lot 11

11

SIX EMBRYOS

PERCENTAGE 81%

HOMO BLACK

HOMO POLLED

- WLR DIRECT HIT
- AUTO DIRECT DRIVE 107D
- AUTO REBECA 292S
- AUTO KING JAMES 162Z
- AUTO CHLOE 264C
- PBRs PINA MARIE 811U

EPDs	
CD:	9
BW:	0.9
WW:	65
YW:	101
MA:	31
CM:	5
SC:	1.1
DC:	5
YG:	-16
CW:	31
RE:	.43
MB:	-16
\$MI:	45

OFFERED BY: WHITE VALLEY RANCH

White Valley Ranch has assembled one of the top cowherds in the nation the past few years; donor, AUTO Chloe 264C is no exception. Her dam, PBRs Piña Marie 811U, is the leading Pinegar and Edwards Land & Cattle Co. donor. She is the big-league donor and daughter of Basin Franchise from the once national champion female Carrouseles Piña Colada. AUTO Direct Drive was a logical choice to flush 264C to, as he is one of the finest purebred bulls ever created in the Pinegar program. He is Homo/Homo, has a balanced EPD profile and his top-of-the-industry phenotype will complement 264C perfectly to produce spectacular progeny.



AUTO CHLOE 264C

Dam of Lot 12



JCL DRIVER 617D / Sire of Lot 12

12

SIX EMBRYOS

LIM-FLEX 69%

DBL BLACK

HOMO POLLED

- COTTAGE LADE BORDER AGENT
- JCL DRIVER 617D
- JLC KEILMA LNL 909A
- AUTO KING JAMES 162Z
- AUTO CHLOE 264C
- PBRs PINA MARIE 811U

EPDs	
CD:	9
BW:	2.0
WW:	73
YW:	111
MA:	28
CM:	6
SC:	1.0
DC:	12
YG:	-10
CW:	36
RE:	-.45
MB:	.06
\$MI:	55

OFFERED BY: WHITE VALLEY RANCH

JCL Driver hit the show circuit in Fort Worth with great anticipation and even better results. His first time out he was the reserve bull as a calf and the talk of the barn. JCL Driver is the top 2% and top 5% for WW and YW, as well as the top 15% for \$MI. His style and eye appeal are desired by the most critical evaluators in the industry. With semen packages purchased by many progressive breeders in the breed, White Valley Ranch is pushing the envelope forward with this unique, modern mating. AUTO Chloe 264C goes back to the top genetics in the breed of all time and will go down in history as a great one as time goes on.



ADLL CIAO 5125C

Dam of Lot 13



MAGS AVIATOR / Sire of Lot 13

13

FOUR EMBRYOS

LIM-FLEX 61%

HOMO BLACK

DBL POLLED

- MAGS WINSTON
- MAGS AVIATOR
- MAGS STRAWBERRY
- DHVO DEUCE 132R
- ADLL CIAO 5125C
- MAGS UNSEAT THE WINNER

EPDs	
CD:	11
BW:	0.2
WW:	69
YW:	102
MA:	24
CM:	8
SC:	1.0
DC:	25
YG:	.14
CW:	33
RE:	.15
MB:	.5
\$MI:	68

OFFERED BY: P BAR S RANCH

ADLL 5125C was P Bar S's premier selection out of the fall 2016 Linhart Limousin Sale. This standout DHVO Deuce daughter is exceptional in her design and futuristic look. She is exceptionally heavy boned, deep quartered and particularly easy fleshing. She is the type and kind that has had brood cow written all over her since the day she came off the cow. Mated with MAGS Aviator, this premium combination is presumed to mix flash and function yielding attractive progeny with solid data across the all columns.

14 FOUR EMBRYOS

LIM-FLEX 69% DBL BLACK HOMO POLLED

WUFLS WILLARD 5115W
WULFS COMPLIANT K687C
 WULFS SOLOIST 6284S
 EXAR DENVER 2002B
MAGS CALICO
 MAGS ZALIAH

EPDs
CD: 8
BW: 3.0
WW: 84
YW: 121
MA: 36
CM: 7
SC: 0.8
DC: 26
YG: -.2
CW: 44
RE: .96
MB: .29
\$MI: 68

OFFERED BY: GRAVEN LAND & CATTLE & GLENDENNING J BAR J RANCH

We guarantee a minimum of 1 pregnancy if a certified embryologist is utilized. This genetic consignment epitomizes the crossroads of where phenotypic quality, huge numbers and genetic diversity meet. This designer mating offers you the opportunity to invest in some of the breed's freshest homozygous polled genetics. The featured sire is none other than the heavy-muscled, \$70,000, purebred A.I. sire who set the breed a blaze topping the Wulf's Opportunity Sale of 2016, Wulfs Compliant! The donor, MAGS Calico, is the 2017 top-selling bred heifer at the Magness Mile High Elite sale where she commanded attention and was admired for her flawless structure, makeup, body depth and high performance. This mating speaks for itself and represents the progressive direction of both the Graven and Glendenning programs. Bid with confidence.



Dam of Lot 14



WULFS COMPLIANT K687C / Sire of Lot 14

15 THREE EMBRYOS

PERCENTAGE 81% DBL BLACK HOMO POLLED

MRL X-RATED 014X
COLE ARCHITECT 08A
 COLE MISS LODESTAR 826U
 EXLR REVIEW 7153R
JBARJ AMAZING REVIEWS 372A
 COLE MISS PRODUCTION 926W

EPDs
CD: 4
BW: 3.4
WW: 101
YW: 139
MA: 28
CM: 6
SC: 1.0
DC: 10
YG: .03
CW: 53
RE: .4
MB: -.06
\$MI: 58

OFFERED BY: GLENDENNING J BAR J RANCH

We guarantee a minimum of 1 pregnancy if a certified embryologist is utilized. These elite embryos are by one of the breed's most popular PUREBRED and big-numbered A.I. sires, COLE Architect! If you're looking for a genetic opportunity that promises to produce homozygous polled, functionally sound bulls and tremendous cow prospects, here's your mating! This mating features service by Architect, a sire who's known for producing high growth, thick cattle that have truly clicked with the commercial industry. The donor female, JBarJ Amazing Reviews 372A, is one of the most phenotypically complete donors to walk the pastures of J Bar J Ranch. She's moderate, big-bodied and boasts a perfectly constructed udder. Don't overlook this buying opportunity sale day.



Dam of Lot 15



COLE ARCHITECT 08A / Sire of Lot 15

16 FOUR EMBRYOS

LIM-FLEX 63% HOMO BLACK HOMO POLLED

MAGS APPLESEED
MAGS CABLE
 MAGS WAY TO SHINE
 AHCC WESTWIND W544
TMCK JADE 935Y
 EXLR JADE 309R

EPDs
CD: 10
BW: 0.7
WW: 74
YW: 114
MA: 28
CM: 9
SC: 1.5
DC: 11
YG: .08
CW: 37
RE: .29
MB: .13
\$MI: 57

OFFERED BY: TUBMILL CREEK FARMS

We guarantee a minimum of 1 pregnancy if a certified embryologist is utilized. What an opportunity to get in on the ground floor of some truly elite genetics. The imagination runs wild when you project the boundless possibilities of the future offspring of these two breed standouts. TMCK Jade 935Y, dam of the highly popular A.I. sire TMCK Cash Flow, possess a combination of structural integrity, body depth and fleshing ability even the most discriminating cattlemen would appreciate. The paternal side of this mating, MAGS Cable, is the huge numbered, \$48,000 syndicated A.I. sire who anchored both the 2016 and 2017 Champion Carload at the National Western Stock Show. This double homozygous mating simply out paces the field. Study the projected EPDs as you appraise the unmatched genetic value on offer.



Son of Lot 16 Dam



MAGS CABLE / Sire of Lot 16



LH BELLE 015B

Daughter of Lot 17 Dam



MAGS CABLE / Sire of Lot 17



FOUR EMBRYOS

LIM-FLEX 75%

HOMO BLACK

HOMO POLLED

- MAGS APPLESEED
- **MAGS CABLE**
- MAGS ZEQUIN
- DHVO DEUCE 132R
- **PBRs TOUCH ME GENTLY 798T**
- CARROUSELS PINA COLADA

EPDs	
CD:	7
BW:	1.9
WW:	77
YW:	116
MA:	29
CM:	7
SC:	1.4
DC:	15
YG:	.09
CW:	40
RE:	.47
MB:	-.13
\$MI:	48

OFFERED BY: DIAMOND HILL CATTLE CO. & HALL CATTLE CO.

These embryos are maternal siblings to LH Belle 015B, the female who swept the 2015-2016 show circuit-2015 NWSS reserve grand champion open and junior shows, 2015 NAILE grand champion in both open and junior shows, 2016 NWSS grand champion in both shows, 2016 FWSS grand champion and 2016 OYE supreme champion female. A full sister to Belle topped the 2016 Hall-CHR Sale at \$15,000.

Touch Me Gently also produced an Aviator daughter, DHIL Touch Me Gently 5798C, who sold to Tubmill Crekk Farms for \$20,000 in the April 2016 Pinegar Sale.

Semen packages sold in the 2017 Hall-CHR bull sale on a highly popular natural bull calf by PVF Insight 0129 out Touch Me Gently, DHIL Colt 5793C, going to Magness, Pinegar, Wulf, GV Limousin, Symens Brothers, Lawrence Family and Blazin K Limousin.

This is a can't-miss mating by MAGS Cable, the lead bull in the 2017 NWSS grand champion carload and now serving herd-sire duties for Magness Land & Cattle and Graven Land & Cattle.



LH BELLE 015B

Daughter of Lot 18 Dam



MAGS ZODIAC / Sire of Lot 18



FOUR EMBRYOS

PERCENTAGE 81%

HOMO BLACK

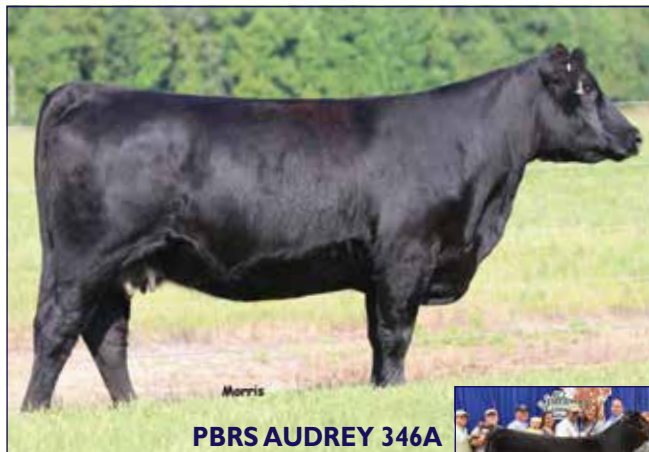
HOMO POLLED

- MAGS WINSTON
- **MAGS ZODIAC**
- MAGS XANTHOUS
- DHVO DEUCE 132R
- **PBRs TOUCH ME GENTLY 798T**
- CARROUSELS PINA COLADA

EPDs	
CD:	8
BW:	2.6
WW:	79
YW:	132
MA:	24
CM:	8
SC:	0.8
DC:	17
YG:	.01
CW:	52
RE:	.35
MB:	-.16
\$MI:	49

OFFERED BY: DIAMOND HILL CATTLE CO. & HALL CATTLE CO.

Zodiac sired a major portion of the Magness calves that were the reserve grand champion carload in Denver in 2017. Magness won the carload show with a powerful group of 2-year-old bulls that included Zodiac sons. Also, the top-selling bull in the 2017 Coleman sale was a Zodiac son purchased by Brehm Farms of Texas. The dam of the embryos needs no introduction as everyone knows she's the dam of Colt Cunningham's many-time champion female, LH Belle.



PBRs AUDREY 346A

Dam of Lot 19



ELCX CANDY 330C / Daughter of Lot 19 Dam



FIVE EMBRYOS

LIM-FLEX 56%

DBL BLACK

DBL POLLED

- EF XCESSIVE FORCE
- **RLBH AIR FORCE ONE**
- EF YAFFA 821Y
- MAGS YIP
- **PBRs AUDREY 346A**
- BUFORD ERICA 9312

EPDs	
CD:	9
BW:	0.1
WW:	53
YW:	84
MA:	20
CM:	8
SC:	1.1
DC:	10
YG:	.10
CW:	20
RE:	-.22
MB:	.45
\$MI:	61

OFFERED BY: EDWARDS LAND & CATTLE CO.

This prestigious package opportunity will result in full sibs to the 2016 All-American Futurity Champion Female, ELCX Candy. Like these embryos, Candy followed in her sire's footsteps and found her way to the backdrop and breeding pen. Candy is one of the most attractive females produced in the Edwards Land and Cattle program. Many great cattle trace back to Buford Ranches Angus females that are working hard in the P Bar S program. This mating is combining the finest in Lim-Flex genetics and possibly some of the most exciting eggs in the US inventory.



AUTO POPPY 421Z Dam of Lots 20 & 21



TMCK CASH FLOW 247C / Sire of Lot 20



EXAR DENVER 2002B / Sire of Lots 20 & 21



SILVEIRAS MISSION NEXUS / Sire of Lot 20

20 ONE SEXED HEIFER EMBRYO

PUREBRED
DBL BLACK DBL POLLED

WULFS ZANE X238Z
TMCK CASH FLOW 247C
TMCK JADE 935Y
AUTO CRUZE 132X
AUTO POPPY 421Z
MAGS MAUELA

EPDs	
CD:	10
BW:	1.6
WW:	76
YW:	113
MA:	28
CM:	8
SC:	0.6
DC:	19
YG:	-.10
CW:	38
RE:	.05
MB:	.23
\$MI:	62

OFFERED BY: ATAK LIMOUSIN

20 ONE SEXED HEIFER EMBRYO

LIM-FLEX 50%
HOMO BLACK DBL POLLED

EXAR UPSHOT 0562B
EXAR DENVER 2002B
EXAR ROYAL LASS 1067
AUTO CRUZE 132X
AUTO POPPY 421Z
MAGS MAUELA

EPDs	
CD:	14
BW:	0.3
WW:	71
YW:	114
MA:	34
CM:	10
SC:	1.0
DC:	22
YG:	-.02
CW:	39
RE:	.75
MB:	.66
\$MI:	76

OFFERED BY: ATAK LIMOUSIN

20 ONE SEXED HEIFER EMBRYO

LIM-FLEX 50%
BLACK DBL POLLED

LJC MISSION STATEMENT P27
SILVEIRAS MISSION NEXUS 1378
SILVEIRAS DAORV 8399
AUTO CRUZE 132X
AUTO POPPY 421Z
MAGS MANUELA

EPDs	
CD:	14
BW:	-0.8
WW:	71
YW:	110
MA:	25
CM:	6
SC:	0.9
DC:	-
YG:	-.07
CW:	34
RE:	.57
MB:	.30
\$MI:	63

OFFERED BY: ATAK LIMOUSIN

We guarantee a minimum of 1 pregnancy if a certified embryologist is utilized.

Sexed heifer matings of this caliber and quality are rarely offered to the buying public but, the 2017 Sale Of Sales is your opportunity to invest in some of our breed's very finest. Study the unique sire combinations in this genetic package and the tremendous purebred donor, AUTO Poppy 421Z, which goes back to the legendary MAGS Manuela cow family and ranks in the top 15% for marbling. Simply stated, the rare combination of numbers, predictability and unique pedigree twists make this genetic lot one to invest in sale day.

21 THREE SEXED HEIFER EMBRYOS

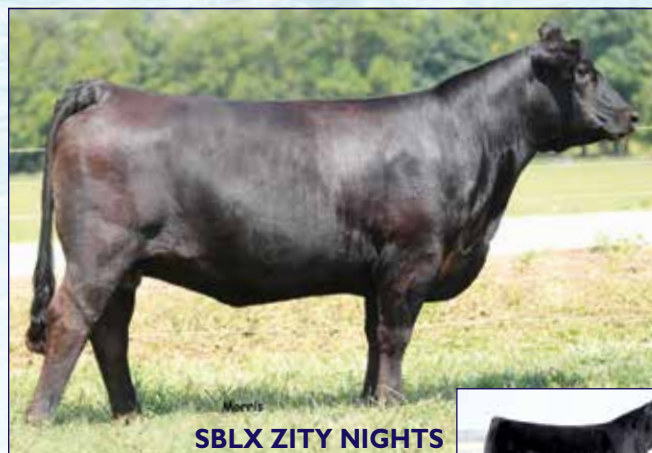
LIM-FLEX 47%
HOMO BLACK DBL POLLED

EXAR UPSHOT 0562B
EXAR DENVER 2002B
EXAR ROYAL LASS 1067
AUTO CRUZE 132X
AUTO POPPY 421Z
MAGS MANUELA

EPDs	
CD:	14
BW:	0.3
WW:	71
YW:	114
MA:	34
CM:	10
SC:	1.0
DC:	22
YG:	-.02
CW:	39
RE:	.08
MB:	.66
\$MI:	76

OFFERED BY: ATAK LIMOUSIN

We guarantee a minimum of 1 pregnancy if a certified embryologist is utilized. This represents one of the very few opportunities to invest in sexed heifer embryos out of the famed purebred AUTO Poppy donor, who carries the moniker as a never-miss female! The sire, EXAR Denver, was a member of the National Western champion carload for Express Ranches and his progeny are known their stoutness, growth, foot size and look. This elite mating promises to produce homozygous black, phenotypically exceptional calves that project to have the ability to compete at the highest level.



SBLX ZITY NIGHTS

Dam of Lot 22



MAGS AVIATOR / Sire of Lot 22



FIVE EMBRYOS

LIM-FLEX 55%

DBL BLACK

DBL POLLED

_____ MAGS WINSTON
 _____ **MAGS AVIATOR**
 _____ MAGS XTRA REST
 _____ SAV BRAND NAME 9115
 _____ **SBLX ZITY NIGHTS**
 _____ MAGS MANUELA

EPDs	
CD:	9
BW:	1.3
WW:	66
YW:	101
MA:	23
CM:	7
SC:	0.9
DC:	23
YG:	.06
CW:	32
RE:	-.40
MB:	-.44
\$MI:	66

OFFERED BY: RIVERSIDE VALLEY FARM

MAGS Aviator was the top-selling bull of the 2014 Magness sale. He flawlessly combines style and growth in a Homo/Homo package. When it comes to a perfect skeletal outline and structural integrity, Aviator is going to be the go to bull for several years to come for many producers nationwide. SBLX Zity Nights was recent highlight of the Milam dispersal, she is a direct daughter of MAGS Manuela, the leading Sugar Bush donor. She posted a tremendous set of scan numbers with a 14.99 for REA and a 4.11 for IMF.



RCK FIRST LADY 5220

Full sister to dam of Lots 23A & 23B



RLBH AIR FORCE ONE / Sire of Lots 23A & 23B



THREE EMBRYOS

LIM-FLEX 31%

DBL BLACK

DBL POLLED

_____ EF XCESSIVE FORCE
 _____ **RLBH AIR FORCE ONE**
 _____ EFYAFFA 821Y
 _____ B C LOOKOUT 7024
 _____ **WRB FIRST LADY 5360**
 _____ SUGARLOAF FIRST LADY K503

EPDs	
CD:	11
BW:	-.02
WW:	53
YW:	85
MA:	20
CM:	6
SC:	1.0
DC:	11
YG:	-.01
CW:	21
RE:	.24
MB:	.63
\$MI:	69

OFFERED BY: AGRI-EXPOSURE LLC



THREE EMBRYOS

With a deep appreciation for moderate-framed, easy-fleshing cattle that are ideal in their skeletal design, Agri-Exposure, Kaye and Jeff Kaufman, decided to blend their very favorite genetics in the Limousin and Angus populations in this particular flush. The Air Force One cattle scattered across the country are intriguing from their mass and volume advantages as well as their flexible structure. Donor 5360 is a flushmate to Cole Kaufman's Supreme Champion Female at VA State Fair and many-time champion throughout the highly competitive Mid-Atlantic region. 5360 has raised numerous Lim-Flex herd sires and is the type of attractive female everyone notices when they go through the pasture. If you are into something different and appreciate premium blended genetics that only get better with time, this mating is certainly going to withstand the test of time.



LH RESOURCEFUL 324R

Dam of Lot 24



COLEMAN REGIS 904 / Sire of Lot 24



FIVE EMBRYOS

LIM-FLEX 25%

HOMO BLACK

HOMO POLLED

_____ SAV FINAL ANSWER 0035
 _____ **COLEMAN REGIS 904**
 _____ COLEMAN DONNA 714
 _____ JCL LODESTAR 27L
 _____ **LH RESOURCEFUL 324R**
 _____ VERMILION LASS 0035

EPDs	
CD:	20
BW:	-3.0
WW:	58
YW:	93
MA:	18
CM:	12
SC:	1.5
DC:	19
YG:	-.05
CW:	22
RE:	-.42
MB:	-.43
\$MI:	64

OFFERED BY: MASSEY LIMOUSIN

LH Resourceful 324R is a double homozygous Lim-Flex daughter of JCL Lodestar who ranks in the top 10% for CED and BW, and top 20% for \$MI. The exceptional accomplishments of this cow family have contributed to the success of the Massey program. The embryos by Coleman Regis 904 will result into 25% Lim-Flex genetics that excel in maternal and marbling numbers. Some of the best from the Massey program are offered with these embryos. Coleman Regis is known for easy-calving and fast-growing progeny, his pedigree contains three of the best females ever produced in the Coleman Angus program.