



# **PINEGAR**

## **HERDBUILDER XXIII**

**MARCH 18, 2017**  
**SPRINGFIELD, MO**

Dear Limousin Enthusiasts,

We set out 26 years ago with just the desire to invest a "little" in the cattle business. After our first purchases of Fullblood Limousin in Oklahoma, we just could not get enough of how great they looked in our pastures; and upon further research of how great the breed was we jumped in 100% and have not looked back! Here we are 26 years later and embarking on our 23rd annual production sale. We have always stood by the comment and believed in "planned genetics and common sense." We have proven to ourselves that sticking with predictable cow families is the way to go.

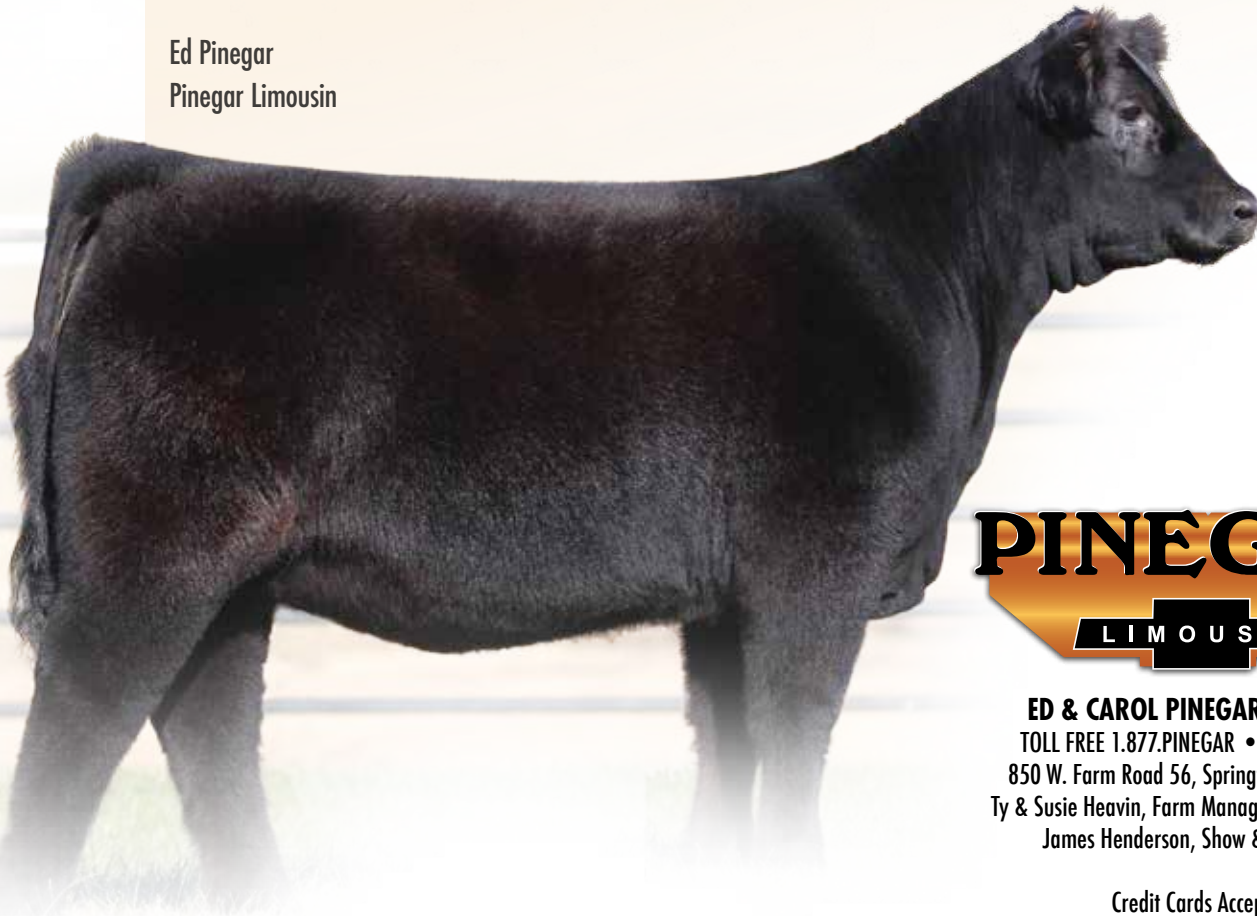
As you review this sale catalog, you will realize the strength in cow families and blending with only the finest genetics has resulted in what we easily can say is our best offering to date. We have selected our finest to showcase in this sale and are in hopes you will take time out of your busy schedule to attend.

As you all know there is so much more to the cattle business than simple breeding them. We have been fortunate over the years to have Ty and Susie Heavin as our managers, along with countless other employees that have come and gone, but all have made some sort of positive impact in our program. The Pinegar Limousin program is backed with nothing but the "team effort" approach and are fully aware that it takes a team to build a village.

If we can be of any assistance with you prior to the sale, please let us know. We appreciate your consideration of our product in advance.

Sincerely,

Ed Pinegar  
Pinegar Limousin



**PINEGAR**  
LIMOUSIN

**ED & CAROL PINEGAR, OWNERS**  
TOLL FREE 1.877.PINEGAR • 417.833.6784  
850 W. Farm Road 56, Springfield, MO 65803  
Ty & Susie Heavin, Farm Managers, 417.839.5849  
James Henderson, Show & Sale Cattle

Credit Cards Accepted



# PINEGAR HERDBUILDER XXIII

SATURDAY, MARCH 18, 2017  
1 P.M. - AT THE FARM - SPRINGFIELD, MO

## SELLING 76 LOTS

LIMOUSIN - LIM-FLEX - FULLBLOOD

31 Bulls - 24 Spring Bred Females - 12 Fall Bred Females - 9 Show Heifers

### SCHEDULE OF EVENTS

#### FRIDAY, MARCH 17, 2017

Afternoon cattle available for viewing

#### SATURDAY, MARCH 18, 2017

8:00 a.m. Coffee and Pastries

11:30 a.m. Complimentary Beef Lunch

1:00 p.m. 23rd Annual HERDBUILDER Sale

#### TRUCKING

Will be available on site to haul any purchases out the day of the sale. To make prior arrangements feel free to call R & R Marketing Co. at 615.330.2735 and we will make your buying easy and accommodating.

#### PAYMENT

Cattle must be paid for at the time of the sale unless prior arrangements are made with sale management at the time of the sale at 615.330.2735. All credit cards accepted.

#### ANNOUNCEMENTS

Announcements at the sale by the owners, auctioneers or sale management will take precedence over statements in the sale catalog.

#### SALE ORDER & SUPPLEMENTAL INFORMATION

Sale order is catalog order. A supplement sheet will be posted Friday, March 17 at [www.RRMktg.com](http://www.RRMktg.com).

#### TERMS & CONDITIONS

Terms of the sale are cash unless satisfactory credit arrangements have been made prior to the sale. A representative will be on hand sale day if your wishes are to insure your purchases. Please note: The sale manager is only an agent for the seller and has no responsibility other than those involved in conducting the sale. All persons who attend the sale do so at their own risk. Neither the sale manager nor Pinegar Limousin assume liability, legal or otherwise, for any accidents which may occur.

#### INSURANCE

Insurance on your purchase can be provided by Mark Smith, Grassroots Genetics, Ankeny, IA, 515.229.5227.

#### DIRECTIONS

Are on the back cover

### SALE-DAY PHONES

Ty Heavin.....	417.839.5849
Ed Pinegar.....	417.833.6784
Randy Ratliff.....	615.330.2735
Mark Smith.....	515.229.5227
Bill Helton.....	256.962.0256
Ken Holloway.....	580.581.7652

### SALE HEADQUARTERS

HAMPTON INN & SUITES.....	417.869.5548
2750 N Glenstone, Springfield, MO 65803	
DRURY INN & SUITES.....	417.863.8400
2715 N Glenstone Ave., Springfield, MO 65803	

### AUCTIONEER

C.K. "Sonny" Booth

### MARKETING TEAM



#### GRASSROOTS GENETICS

Mark Smith • 515.229.5227



#### AMERICAN CATTLE SERVICES

Ken Holloway • 580.581.7652

#### HELTON CONSULTING

Bill Helton • 256.962.0256

### SALE MANAGER



Randall O. Ratliff • 615.330.2735

Randy@RRMktg.com • [www.RRMktg.com](http://www.RRMktg.com)

1212 Laurel St, #1614, Nashville, TN 37203  
(L#2845)

If you need assistance with your purchases or want to discuss the genetics selling, feel free to contact any member of our marketing team. As a paid marketing agent for Pinegar Limousin, we take pride in the opportunity to work closely with this program. We can assist you with your phone order and/or handle your bid in the most confidential manner. E-mail, call or text and we will be more than happy to assist.

# CUSTOMER SATISFACTION



**1 AUTO CATT 264X**  
Owned by: Brooke Heavin  
2011 NJLS&C Rs. Grand Champion Lim-Flex



**2 AUTO BETTE 266Y**  
Owned by: Adam Griffith  
2012 NJLS&C Grand Champion Lim-Flex  
2012 NAILE Jr. Show Rs. Grand Champion



**3 AUTO MORNIN 214Y**  
Owned by: Andrew Milam  
2012 NAILE Grand Champion  
2012 NJLS&C Rs. Grand Champion Lim-Flex  
2013 NAILE Rs. Grand Champion Lim-Flex Pair



**4 AUTO LUCKIE TOO 423Y**  
Owned by: Cody Heavin  
2013 NJLS&C Grand Champion  
2013 NWSS Jr. Show  
Rs. Grand Champion Lim-Flex



**5 AUTO MABELLINE 267Z**  
Owned by: Mikah Edwards  
2015 NWSS Grand Champion Lim-Flex



**6 AUTO AMERIE 228A**  
Owned by: Caitlyn Oschner  
2015 NWSS Jr. Show Grand Champion  
Purebred Female  
2015 NWSS Grand Champion Purebred Female



**7 AUTO LUCKY STRIKE 118B**  
Owned by: P Bar S Ranch  
2015 AALF Grand Champion Bull  
2015 American Royal Grand Champion Bull



**8 AUTO ADORIE 439A**  
Owned by: Gage Baker  
2015 MO Field Day Grand Champion  
Lim-Flex

**9 AUTO REAL DEAL 150B**  
 Owned by: Begert Limousin  
 2015 National MOE Gold Medal Bull  
 2015 American Royal Grand Champion Bull



9

**10 AUTO PEYTON 206Y**  
 Owned by: Linhart Limousin  
 2012 NWSS Rs. Grand Champion Female



10

**11 AUTO DONYA 207D**  
 Owned by: Ryleigh Morris  
 2016 KS Beef Expo 4th Overall



11

**12 AUTO MOONSHINE 280B**  
 Owned by: Aaron Linhart  
 2016 Heartland Regional  
 Grand Champion Lim-Flex



12

**13 AUTO CANAN 297C**  
 Owned by: Rachel Booth  
 2016 NJLS&C Heifer Show Div. Champion



13

**14 AUTO CAMILLA 606C**  
 Owned by: Dominic Rupert  
 2016 NAILE Open Show Grand Champion



14

**15 AUTO CURIOUS 277C**  
 Owned by: Joanna Moser  
 2016 MN State Fair Grand Champion Female  
 2017 NWSS Class Winner



15

**16 AUTO DARLIN 204D**  
 Owned by: Keely Shultz  
 2016 NAILE Rs. Calf Champion  
 2016 GA National Fair 4th Overall  
 2016 GA Field Day Grand Champion  
 2017 Regional Farm Bureau Show  
 Supreme Champion  
 2017 EMC Regional Show  
 Rs. Supreme Champion



16



LOT 1 | AUTO ACE VENTURA 557C

## I AUTO ACE VENTURA 557C

LIM-FLEX(62) BULL • HOMO POLLED (T) • HOMO BLACK (T)  
10/30/2015 • AUTO 557C • LFM2100021

MAGS UR A ROBIN  
**MAGS ROBIN HOOD 276Y**  
MAGS UNDERFOOT

MYTTY IN FOCUS  
**AUTO MIGHTY GIRL 670W**  
AUTO BLACK TAFFY 223T

LH RODEMASTER 338R  
BOHI RED ROBIN 282R  
EXLR EXCELLANTE 251L  
AUTO KYRIA 232K  
S A F FOCUS OF E R  
MYTTY COUNTESS 906  
DHVO DEUCE 132R  
EXLR MOLLY 7103K

BW: 64  
ADJ WW: 794  
ADJ YW: 1,230  
ADJ FAT: 0.45  
ADJ REA: 15.99  
ADJ IMF: 4.17

	CED	BW	WW	YW	MA	CEM	SC	DOC	YG	CW	RE	MB	SMTI
EPDS	10	0.7	70	103	35	7	1.3	17	.11	32	.26	.41	65
%RANK	30	40	25	30	3	40	10	65	>95	30	85	10	10

AUTO Ace Ventura 557C is a homozygous polled, homozygous black herd-sire prospect who has been chosen by the Pinegar crew to be their lead off bull in this 23rd annual production sale. He is a 62% Lim-Flex son of MAGS Robin Hood 276Y, a son of MAGS UR A Robin, who has been a senior herd sire in the Pinegar herd the last few years. His dam is a daughter of Mytty In Focus from AUTO Black Taffy 223T on the bottom side of his pedigree. His grandmother is a full sister to AUTO Tootsie Pop, the leading donor for Linhart Limousin in Iowa. We admire so much about his EPD profile, but also his scan data. He scanned a 15.99 for REA and 4.17 for IMF. He ranks in the top 7% in his contemporary group. He ranks in the 3% for MK with a 35, and TM with a 71. He also ranks in the top 10% for SC with a 1.30, MB with a .41 and SMTI with a 65. This beef bull stands for such much the Pinegar program has sought after for last 26 years. He is sound from the ground up, clean fronted, strong down his topline and has so much depth of rib and overall capacity.



LOT 2 | AUTO DIRECT DRIVE 107D

**2 AUTO DIRECT DRIVE 107D ET**

PUREBRED BULL • HOMO POLLED (T) • HOMO BLACK (T)  
3/2/2016 • AUTO 107D • NPM2110676

<b>KRVN NASKAR 013N</b>	GPPF BLAQUE RULON	BW:	64
<b>WLR DIRECT HIT</b>	WL JU JU GAL 149J	ADJ WW:	826
MAGS NIGHT AMBUSH	AUTO BLACK DAKOTA 129J	ADJ YW:	1,187
	MISS WULFETTE 6230F	ADJ FAT:	0.24
LESF ASPHALT 9N	GPPF BLAQUE RULON	ADJ REA:	15.50
<b>AUTO REBECA 292S</b>	GPPF EXTRA SWEET ELITE	ADJ IMF:	3.07
EXLR REBECA 1019P	BR MIDLAND		
	EXLR REBECA 614H		

	CED	BW	WW	YW	MA	CEM	SC	DOC	YG	CW	RE	MB	SMTI
EPDS	7	1.1	68	101	31	2	1.0	4	-.22	32	.44	-.30	41
%RANK	60	50	30	30	15	95	30	>95	40	30	55	90	85

AUTO Direct Drive 107D could be one of the all-time great herd-sire prospects ever created in the long-standing Pinegar herd. To find a purebred bull of the caliber with this much good in him is hard to produce and hard to find. He is massive in his foot size, soft in his pasterns and moves extremely well, which we all realize this is the most important trait in any breed of cattle. We admire his moderation in frame, fleshing ability and do-ability. This beef bull combines the best in rib shape, volume and still maintains plenty of thickness. He just happens to be a son of one of the all-time great Lim-Flex donors in the entire breed, AUTO Rebeca 292S. There are so many champions



AUTO REBECA 292S | Dam of Lot 2

and recognized progeny that have topped sales, won shows and now doing an amazing job in production from AUTO Rebeca 292S. WLR Direct Hit is recognized in the breed as one of the great Purebred. AUTO Direct Drive 107D meets the demands of so many in the business. We are certain he will make a positive impact in the breed and will certainly highlight the new buyer's program.

# POWER BULL WITH BIG RIBEYE



LOT 3 | AUTO CASH & CARRY 101D ET

## 3 AUTO CASH & CARRY 101D ET

LIM-FLEX(62) BULL • HOMO POLLED (T) • HOMO BLACK (T)  
1/10/2016 • AUTO 101D • LFM2097729

COLE WINDFALL 144W  
**AUTO KING JAMES 162Z**  
AUTO LUCKIE 246W

DHVO DEUCE 132R  
**PBRs DUTCHESS 790X**  
SEDGWICKS DUTCHESS 2280

COLEMAN PRODUCTION 608  
COLE MISS FIRSTDOWN 6162S  
WLR DIRECT HIT  
TYEJ DB SERENITY  
GPFf BLAQUE RULON  
AMY JO DHAN 20L  
RR 9440 SCOTCH CAP 1483  
CIRCLE S DUTCHESS 280

BW: 70  
ADJ WW: 836  
ADJ YW: 1,316  
ADJ FAT: 0.18  
ADJ REA: 17.74  
ADJ IMF: 3.2

	CED	BW	WW	YW	MA	CEM	SC	DOC	YG	CW	RE	MB	SMTI
EPDS	8	1.5	63	103	31	5	1.2	12	-.08	32	.25	-.11	46
%RANK	45	55	50	30	15	75	10	85	80	30	85	60	65

AUTO Cash & Carry 101D is appropriately named. If you are in need of a herd-sire prospect to add extra pounds, more thickness and a uniform look to a future calf crop, then we urge you to consider this 62% Lim-Flex. This big-footed, well-traveling bull has an appealing look to him and one you know will sire a set of calves that have that unique profile and design. He is a son of AUTO King James, the leading son of the big-numbered COLE Windfall 144W from the many-time show champion female, AUTO Luckie 246W. He is owned by Burnett Brothers in Texas and was a past Ozark Empire Fair grand



PBRs DUTCHESS 790X | Dam of Lot 3

champion bull. AUTO Cash & Carry 101D's dam is PBRs Duchess 790X, who has emerged as one of the great-producing donors at Pinegar Limousin. She is a daughter of the past National Champion DHVO Deuce 132R. This young bull ranks in the top 15% for MK with a 31, and top 10% for SC with a 1.2.





Morris

**LOT 4 | AUTO HIGH TIDE 179C**

**4 AUTO HIGH TIDE 179C ET**

PERCENTAGE(81) BULL • HOMO POLLED (T) • HOMO BLACK (T)  
11/12/2015 • AUTO 179C • NXM2100587

LH WAR HERO 195W <b>MAGS ANCHOR</b> MGS XIPHOPAGOUS	JCL LODESTAR 27L VERMILION ERICA LADY 1229 DHVO DEUCE 132R MAGS SALINA	BW: 76 ADJ WW: 686 ADJ YW: 1,084 ADJ FAT: 0.25 ADJ REA: 14.53 ADJ IMF: 3.18
LVLS FARMER JOHN 7428P <b>LVLS 9066U</b> LVLS9066R	LVLS FARMER JACK 5842M LVLS7428L COLE WULF HUNT LVLS9066N	

	CED	BW	WW	YW	MA	CEM	SC	DOC	YG	CW	RE	MB	SMTI
EPDS	7	2.5	72	103	25	7	1.2	15	.01	34	.31	.19	58
%RANK	60	80	20	30	55	40	10	75	95	25	80	25	20

This 81% Limousin bull is homozygous polled, homozygous black and one of the leading herd-sire prospects of the entire offering. He is sired by MAGS Anchor, the leading son of LH War Hero 195W; and on the dam's side is LVLS 9066U. She is the elite donor for Hager Cattle Co. from North Dakota, and known daughter of LVLS Farmer John. For a bull to be a higher percentage and still maintain a tremendous amount of depth of body, rib shape and fleshing ability is certainly hard to come by. Well here he is! This bull is bound to get your attention sale day when you see him. Extra bone, superb structure, rib shape, square hip with mass and power is how we describe the breed-leading sire prospect.

# EXTREME MUSCLE & POWER IN A PUREBRED



LOT 5 | AUTO SHARP SHOOTER 176C

## 5 AUTO SHARP SHOOTER 176C ET

PUREBRED BULL • HET POLLED (T) • HOMO BLACK (P1)  
10/28/2015 • AUTO 176C • NPM2100559

MAGS THE GENERAL  
**AUTO CRUZE 132X**  
AUTO REBECA 292S

WLR DIRECT HIT  
**AUTO LUCKIE TOO 423Y**  
TYEJ DB SERENITY

AUTO DOLLAR GENERAL 122R  
EXLR LUVLY 821M  
LESF ASPHALT 9N  
EXLR REBECA 1019P  
KRVN NASKAR 013N  
MAGS NIGHT AMBUSH  
LESF ASPHALT 9N  
TYEJ DB SIZZLE

BW: 68  
ADJ WW: 673  
ADJ YW: 1,053  
ADJ FAT: 0.12  
ADJ REA: 13.96  
ADJ IMF: 3.04

	CED	BW	WW	YW	MA	CEM	SC	DOC	YG	CW	RE	MB	SMTI
EPDS	7	1.0	67	98	28	5	0.6	13	-.18	31	.32	-.03	51
%RANK	60	45	35	40	30	75	65	80	55	30	80	45	45

Muscle and extreme power is what you get when you consider this purebred Limousin bull, AUTO Sharp Shooter 176C. He is one the farm's favorites and rightfully so. He just happens to be sired by the leading purebred bull AUTO Cruze 132Z. Cruze is not on the open market and his semen is highly sought after by some of the breed's most discriminating cattlemen. AUTO Sharp Shooter 176C is a full brother to the top-selling bulls in last year's Pinegar sale. They were AUTO Real Deal 150B and AUTO Sure Deal 149B



**AUTO LUCKIE TOO 423Y** | Dam of Lot 5

purchased by Begert Limousin and TLC Ranch, respectively. Their dam is AUTO Luckie Too 423Y who has surfaced as one of the very best Pinegar donors ever in production.



Morris

LOT 6 | AUTO DUALY 553C

**6 AUTO DUALY 553C**

PUREBRED BULL • HET POLLED (T) • HET BLACK (T)  
10/29/2015 • AUTO 553C • NPM2100019

MAGS XYLOPOLIST <b>AUTO BLACK COFFEE 512A</b> AUTO COFFE CAKE 699W	DHVO DEUCE 132R MAGS STRAWBERRY AUTO BLAQUE LABEL 176S AUTO RAMONA 257T LH RODEMASTER 338R AVA JO DHVO 721R AUTO DOLLAR GENERAL 122R AUTO GLORY 239W	BW: 68 ADJ WW: 854 ADJ YW: 1,172 ADJ FAT: 0.23 ADJ REA: 13.63 ADJ IMF: 3.4
AUTO GUNN POINT 192Y <b>AUTO EVIE</b> AUTO PENNY 643Y		

	CED	BW	WW	YW	MA	CEM	SC	DOC	YG	CW	RE	MB	SMTI
EPDS	6	1.9	67	99	28	6	0.9	14	-.11	32	.31	.01	52
%RANK	70	65	35	35	30	60	30	80	70	30	80	40	40

Here is a sale feature and one of the top selections for the sale from long-time manager Ty Heavin. Ty along with many of us have selected this purebred bull as one of our favorites. He is a son of AUTO Black Coffee 512A, the leading purchase in a past Pinegar sale from Keeton Limousin and Begert Limousin both of Texas. This soon-to-be major herd sire will absolutely make you want to sit down and catch your breathe when you see him. He is absolutely perfect at every angle, sound in his structure and very prominent in his stance. This purebred herd-sire prospect offers a moderate birth of 68 lbs. and a 780-lb. weaning weight. Pinegar Limousin plan on collecting the bull for in-herd use only.

# HERD-SIRE PROSPECTS



LOT 7 | AUTO FULLY LOADED 159C

## 7 AUTO FULLY LOADED 159C ET

PUREBRED BULL • HOMO POLLED (T) • HOMO BLACK (T)  
10/27/2015 • AUTO 159C • NPM2100608

<b>KRVN NASKAR 013N</b>	GPFF BLAQUE RULON	<b>BW:</b> 68
<b>WLR DIRECT HIT</b>	WL JU JU GAL 149J	<b>ADJ WW:</b> 674
MAGS NIGHT AMBUSH	AUTO BLACK DAKOTA 129J	<b>ADJ YW:</b> 1,014
	MISS WULFETTE 6230F	<b>ADJ FAT:</b> 0.19
	WADDLES COBALT 3106	<b>ADJ REA:</b> 13.3
<b>TNUH BLUE PRINT 245H</b>	TNUH MISS C245	<b>ADJ IMF:</b> 1.34
<b>MAGS SALMETTO</b>	BR MIDLAND	
MAGS PALMETTO	MISS WULFETTE 6230F	

	CE	BW	WW	YW	MA	CEM	SC	DOC	YG	CW	RE	MB	SMTI
EPDS	8	1.8	60	82	29	2	1.3	3	-.26	23	.64	-.47	33
%RANK	45	65	60	75	25	95	10	>95	30	60	25	>95	>95

Here is a purebred bull we are excited about showing the public. He is a son of the now deceased purebred bull WLR Direct Hit. His dam, MAGS Salmetto, is a proven donor and daughter of TNUH Blue Print. This young bull as a proven pedigree, solid EPD profile and a wonderful design and conformation to him. Buy with confidence from a program that have tried, blended and proven genetics over the years to bring you as much of a predictable product as they can.

## 8 AUTO HIGH CALIBAR 165C ET

LIM-FLEX(50) BULL • POLLED • HET BLACK (T)  
10/27/2015 • AUTO 165C • LFM2100556

S A V BISMARCK 5682	G A R GRID MAKER	<b>BW:</b> 64
<b>S A V BRILLIANCE 8077</b>	S A V ABIGALE 0451	<b>ADJ WW:</b> 684
S A V BLACKCAP MAY 5270	S A V 8180 TRAVELER 004	<b>ADJ YW:</b> 1,065
	S A V MAY 2420	<b>ADJ FAT:</b> 0.17
DHVO DEUCE 132R	GPFF BLAQUE RULON	<b>ADJ REA:</b> 12.87
<b>AUTO FOREVER 219X</b>	AMY JO DHAN 20L	<b>ADJ IMF:</b> 2.59
MAGS MANUELA	EXLR LIMITED EDITION 765J	
	AUTO CITY NIGHTS 214H	

	CE	BW	WW	YW	MA	CEM	SC	DOC	YG	CW	RE	MB	SMTI
EPDS	13	0.1	64	97	26	6	1.1	18	-.17	29	.68	.29	61
%RANK	10	30	45	40	45	60	15	65	55	40	20	15	15

AUTO High Caliber is a 50% Lim-Flex black, polled beef bull. We admire and appreciate his overall mass, extreme depth of body and the amount of fore rib he has. He is a true breeding bull. Look at the amount of thickness and mass he has down his top and out of his hooks to pens. This son of SAV Brilliance 8077 is from one of the very best Pinegar donors, AUTO Forever 219X. She is a daughter of the National Champion DHVO Deuce and from the now deceased MAGS Manuela. AUTO High Caliber 165C ranks in the top 15% in SC with a 1.10, MB with a .29 and SMTI with 61.



LOT 8 | AUTO HIGH CALIBAR 165C

## 9 AUTO HIGH LIFE 137C ET

PUREBRED BULL • HET POLLED (T) • HOMO BLACK (T)  
9/26/2015 • AUTO 137C • NPM2100543

<b>MAGS THE GENERAL</b>	AUTO DOLLAR GENERAL 122R	<b>BW:</b> 68
<b>AUTO CRUZE 132X</b>	EXLR LUVLY 821M	<b>ADJ WW:</b> 861
AUTO REBECA 292S	LESF ASPHALT 9N	<b>ADJ YW:</b> 1,194
	EXLR REBECA 1019P	<b>ADJ FAT:</b> 0.26
<b>WLR DIRECT HIT</b>	KRVN NASKAR 013N	<b>ADJ REA:</b> 14.82
<b>AUTO LUCKIE TOO 423Y</b>	MAGS NIGHT AMBUSH	<b>ADJ IMF:</b> 3.19
TYEJ DB SERENITY	LESF ASPHALT 9N	
	TYEJ DB SIZZLE	

	CE	BW	WW	YW	MA	CEM	SC	DOC	YG	CW	RE	MB	SMTI
EPDS	7	1.0	70	104	28	5	0.9	13	-.08	31	.42	-.03	51
%RANK	60	45	25	25	30	75	30	80	80	30	60	45	45

Here is a full brother to Lot 5 and a full brother to the top-selling bulls in last year's Pinegar sale. They were AUTO Real Deal 150B and AUTO Sure Deal 149B purchased by Begert Limousin and TLC Ranch, respectively. Their dam, AUTO Luckie Too 423Y, has surfaced as one of the very best Pinegar donors ever in production. This Cruze son is just flat out massive and exactly what the Pinegar team imagined with they created this mating. He represents in their eyes exactly what a purebred Limousin bull should look like.



LOT 9 | AUTO HIGH LIFE 137C

## 10 AUTO POWER PLAY 561C

PERCENTAGE(81) BULL • HOMO POLLED (T) • HOMO BLACK (T)  
10/30/2015 • AUTO 561C • NXM2100607

MAGS UR A ROBIN  
**MAGS ROBIN HOOD 276Y**  
MAGS UNDERFOOT

MAGS THE GENERAL  
**AUTO BREEZE 235X**  
AUTO REBECA 292S

LH RODEMASTER 338R  
BOHI RED ROBIN 282R  
EXLR EXCELLANTE 251L  
AUTO KYRIA 232K  
AUTO DOLLAR GENERAL 122R  
EXLR LUVLY 821M  
LESF ASPHALT 9N  
EXLR REBECA 1019P

BW: 68  
ADJ WW: 881  
ADJ YW: 1,341  
ADJ FAT: 0.29  
ADJ REA: 14.34  
ADJ IMF: 4.09

	CED	BW	WW	YW	MA	CEM	SC	DOC	YG	CW	RE	MB	SMTI
EPDS	7	2.1	83	126	38	7	0.6	9	.02	47	.22	.23	63
%RANK	60	70	3	3	1	40	65	90	95	3	90	20	15

Here is an 81% Limousin bull who is has so much stacked in his favor! He is a son of MAGS Robin Hood 276Y and from a full sister in blood to the popular purebred bull AUTO Cruze. Take a look here; he ranks in the top 1% for MB with a 38 and TM with a 79, top 3% for WW with 83, YW with a 126 and CW with a 47, top 15% for SMTI with a 63. He also has a birth of 68 lbs., weaning weight of 850 lbs., yearling weight of 1,324 lbs. and scanned a 14.04 REA and 4.01 IMF.



LOT 10 | AUTO POWER PLAY 561C



LOT 11 | AUTO HIGH COTTON 143C

## 11 AUTO HIGH COTTON 143C ET

LIM-FLEX(50) BULL • HOMO POLLED (T) • HOMO BLACK (T)  
9/27/2015 • AUTO 143C • LFM2100547

CONNEALY CONSENSUS 7229  
**EXAR COUNSEL 1016B**  
EXAR EVAS 71561

WLR DIRECT HIT  
**AUTO LUCKIE 246W**  
TYEJ DB SERENITY

CONNEALY CONSENSUS  
BLUE LILLY OF CONANGA 16

KRVN NASKAR 013N  
MAGS NIGHT AMBUSH  
LESF ASPHALT 9N  
TYEJ DB SIZZLE

BW: 76  
ADJ WW: 795  
ADJ YW: 1,176  
ADJ FAT: 0.20  
ADJ REA: 12.16  
ADJ IMF: 2.88

	CED	BW	WW	YW	MA	CEM	SC	DOC	YG	CW	RE	MB	SMTI
EPDS	9	1.8	57	101	28	4	1.6	-	.07	30	.26	.37	60
%RANK	35	65	70	30	30	85	1		>95	35	85	10	20

This 50% Lim-Flex herd-sire prospect is homozygous polled, homozygous black. If you are looking to add a uniform and stylish look to your offspring, consider this double homozygous bull. He is a son of the big-numbered Angus sire EXAR Counsel 1016B, a proven and stout-made son of Connealy Consensus. His dam is the once All-American Futurity Grand Champion Female, AUTO Luckie 246W who is now a proven and leading purebred donor in the Pinegar program.

## 12 AUTO VIEWPOINT 152C ET

LIM-FLEX(50) BULL • HET POLLED (T) • HET BLACK (T)  
10/1/2015 • AUTO 152C • LFM2100553

S A V BISMARK 5682  
**S A V BRILLIANCE 8077**  
S A V BLACKCAP MAY 5270

DHVO DEUCE 132R  
**AUTO FOREVER 219X**  
MAGS MANUELA

G A R GRID MAKER  
S A V ABIGALE 0451  
S A V 8180 TRAVELER 004  
S A V MAY 2420  
GPFF BLAQUE RULON  
AMY JO DHAN 20L  
EXLR LIMITED EDITION 765J  
AUTO CITY NIGHTS 214H

BW: 66  
ADJ WW: 834  
ADJ YW: 1,172  
ADJ FAT: 0.19  
ADJ REA: 15.63  
ADJ IMF: 2.82

	CED	BW	WW	YW	MA	CEM	SC	DOC	YG	CW	RE	MB	SMTI
EPDS	13	0.4	66	102	26	6	1.3	18	-.20	29	.82	.35	64
%RANK	10	35	35	30	45	60	10	65	45	40	10	15	10

It is a known fact there is something magical in our business when you mate a proven Angus bull with a well-made purebred Limousin female. The blending of two of the finest has created a wonderful herd sire in AUTO Viewpoint 152C. This son of SAV Brilliance 8077 is from the purebred donor sired by DHVO Deuce and from the famed MAGS Manuela. 152C is stout in his structure, heavy in his bone and extremely big footed. This bull sure has the look of promise and one we feel will make a positive impact in anyone's herd. He ranks in the top 10% for SC with a 1.30, REA with a .82, CED with a 13, SMTI with a 64. Also ranks in top 15% for MB with a .35. He scanned a 16.05 for REA and has a 66-lb. birth with an 822-lb. weaning.



LOT 12 | AUTO VIEWPOINT 152C

# HERD-SIRE PROSPECTS



LOT 13 | AUTO TRANSMISSION 100D

## 14 AUTO ROADSTER 104D ET

LIM-FLEX(42) BULL • HOMO POLLED (T) • HOMO BLACK (T)  
2/1/2016 • AUTO 104D • LFM2112157

S A V PIONEER 7301  
**TMCK HYDRAULIC 17Y**  
HSF WALL OF FAME

S A V PROVIDENCE 6922  
**SBLX MARIA 662Y**  
MAGS MANUELA

SAV FINAL ANSWER 0035  
S A V BLACKBIRD 5297  
RPY PAYNES SIGNAL 6S  
HSF PENTHOUSE PIN-UP  
SAV 004 PREDOMINANT 4438  
S A V MAY 7238  
EXLR LIMITED EDITION 765J  
AUTO CITY NIGHTS 214H

BW: 74  
ADJ WW: 912  
ADJ YW: 1,298  
ADJ FAT: 0.37  
ADJ REA: 14.69  
ADJ IMF: 3.99

	CED	BW	WW	YW	MA	CEM	SC	DOC	YG	CW	RE	MB	SMTI
EPDS	8	3.7	82	128	24	6	1.2	17	.02	50	.62	.33	67
%RANK	45	95	3	2	65	60	10	65	95	2	25	15	10

Full brother to Lot 13 and one amazing herd sire prospect. This 42% Lim-Flex blends two of the breed's finest purebred Angus lines together in SAV Pioneer and SAV Providence and blends two of the breed's top purebred Limousin in HSF Wall of Fame and MAGS Manuela. This TMCK Hydraulic son ranks in the top 2% for YW with a 128, CW with a 50, top 3% for WW of 82, top 10% for SC with a 1.20 and SMTI with a 67. His cool look, flawless design and excellent structure make him a powerful lot in this breed-leading sale.



LOT 15 | AUTO WRANGLER 549C

## 13 AUTO TRANSMISSION 100D ET

LIM-FLEX(42) BULL • HOMO POLLED (T) • HET BLACK (T)  
2/1/2016 • AUTO 100D • LFM2097728

S A V PIONEER 7301  
**TMCK HYDRAULIC 17Y**  
HSF WALL OF FAME

S A V PROVIDENCE 6922  
**SBLX MARIA 662Y**  
MAGS MANUELA

SAV FINAL ANSWER 0035  
S A V BLACKBIRD 5297  
RPY PAYNES SIGNAL 6S  
HSF PENTHOUSE PIN-UP  
SAV 004 PREDOMINANT 4438  
S A V MAY 7238  
EXLR LIMITED EDITION 765J  
AUTO CITY NIGHTS 214H

BW: 68  
ADJ WW: 886  
ADJ YW: 1,281  
ADJ FAT: 0.29  
ADJ REA: 15.45  
ADJ IMF: 3.89

	CED	BW	WW	YW	MA	CEM	SC	DOC	YG	CW	RE	MB	SMTI
EPDS	8	2.9	80	126	24	6	1.2	13	.02	50	.62	.33	66
%RANK	45	85	5	3	65	60	10	80	95	2	25	15	10

Wow! What a gorgeous profile, unique design and excellent structure found within this young herd-sire prospect who just happens to represent a very predictable and proven pedigree. He is sired by the ever-popular Lim-Flex sire TMCK Hydraulic, a big-numbered son of SAV Pioneer and from the elite Riverside Valley Farm donor, SBLX Maria 662Y. She is a daughter of SAV Providence from the famed and now deceased MAGS Manuela. This bull has it all—he ranks in the top 2% for CW with a 50, top 3% for YW with a 126, WW with an 80, and top 10% for SMTI with a 66.



LOT 14 | AUTO ROADSTER 104D

## 15 AUTO WRANGLER 549C

PERCENTAGE(85) BULL • HOMO POLLED (T) • RED  
10/29/2015 • AUTO 549C • NXM2100018

CJSL WINDFALL 9072W  
**FC ANGELS ANSWER**  
SL ANGELS SWEET MELODY

LH U HAUL 135U  
**AUTO ROSIE 421A**  
CARROUSELS PEACHES 4330P

LVLS SECRET WEAPON 4408K  
CJ'S MS ARROWHEAD 456P  
MAGS SASQUATCH  
JSTH ANGELS CENTERFOLD  
BASIN FRANCHISE P142  
EXLR DUCHESS 7129R  
AUTO BLACK DAKOTA 129J  
ELMW GINNIE P58G

BW: 66  
ADJ WW: 781  
ADJ YW: 1,072  
ADJ FAT: 0.21  
ADJ REA: 13.77  
ADJ IMF: 3.05

	CED	BW	WW	YW	MA	CEM	SC	DOC	YG	CW	RE	MB	SMTI
EPDS	8	1.1	48	66	34	9	0.7	15	-.19	11	.20	-.03	45
%RANK	45	50	95	95	5	15	55	75	50	95	90	45	70

Here is a big milk numbered bull who ranks in the top 5% with a 34. This red, homozygous polled herd bull prospect is sired by FC Angels Answer, a big milk numbered son of CJSL Windfall with a 45 on MK. He is from AUTO Rosie 421A, a daughter of LH U Haul 135U and from the famed Pinegar donor, Carrousel's Peaches. We admire the extension, length of body and powerful look that this red bull has in his favor.



LOT 16 | AUTO DEFENDER 133C



AUTO REBECA 292S | Dam of Lots 16 & 17



LOT 17 | ALL IN ONE 171C

## 16 AUTO DEFENDER 133C ET

LIM-FLEX(68) BULL • HOMO POLLED (T) • HOMO BLACK (T)  
9/12/2015 • AUTO 133C • LFM2100542

LH WAR HERO 195W  
**MAGS ANCHOR**  
MGS XIPHOPAGOUS

LESF ASPHALT 9N  
**AUTO REBECA 292S**  
EXLR REBECA 1019P

JCL LODESTAR 27L  
VERMILION ERICA LADY 1229  
DHVO DEUCE 132R  
MAGS SALINA  
GPFF BLAQUE RULON  
GPFF EXTRA SWEET ELITE  
BR MIDLAND  
EXLR REBECA 614H

BW: 66  
ADJ WW: 901  
ADJ YW: 1,401  
ADJ FAT: 0.17  
ADJ REA: 12.73  
ADJ IMF: 1.8

	EPDS	CED	BW	WW	YW	MA	CEM	SC	DOC	YG	CW	RE	MB	SMTI
	8	0.7	80	122	25	6	0.9	6	.01	43	.24	.06	56	
%RANK	45	40	5	4	55	60	30	95	95	10	90	35	25	

This 68% Lim-Flex bull is homozygous polled, homozygous black and made extremely well. He stands out in a crowd with his powerful stance. This son of MAGS Anchor is from the breed-leading donor AUTO Rebeca 292S. AUTO Defender 133C ranks in the top 4% for YW with a 122, top 5% for WW with an 80, top 10% for CW with a 43 and top 15% for TM with a 65. He posts a birth of 66 lbs., weaning weight of 879 lbs. and yearling weight of 1392 lbs.

## 17 AUTO ALL IN ONE 171C ET

LIM-FLEX(37) BULL • HOMO POLLED (T) • HOMO BLACK (T)  
10/28/2015 • AUTO 171C • LFM2100558

WERNER WAR PARTY 2417  
**R B TOUR OF DUTY 177**  
B A LADY 6807 305

LESF ASPHALT 9N  
**AUTO REBECA 292S**  
EXLR REBECA 1019P

CONNELY ONWARD  
BAAR USA LADY JAYE 489  
VERMILION DATELINE 7078  
G D LADY HI FLYER 302  
GPFF BLAQUE RULON  
GPFF EXTRA SWEET ELITE  
BR MIDLAND  
EXLR REBECA 614H

BW: 68  
ADJ WW: 802  
ADJ YW: 1,202  
ADJ FAT: 0.21  
ADJ REA: 16.65  
ADJ IMF: 3.24

	EPDS	CED	BW	WW	YW	MA	CEM	SC	DOC	YG	CW	RE	MB	SMTI
	13	-.2	85	136	39	9	0.8	8	-.28	46	.79	.16	64	
%RANK	10	25	2	1	1	15	40	95	25	4	10	25	10	

Here is one of the biggest numbered bulls in the offering. He ranks in the top 1% for YW with 136, MK with a 39, TM with an 81, top 4% for CW with a 46, top 10% for CED with a 13, REA with a .79 and SMTI with a 64. He is sired by RB Tour of Duty 177 and from the famed AUTO Rebeca 292S. This young bull stands upright, extremely long and level down his top line and very structurally correct. He scanned a 16.39 for REA and 3.17 for IMF.

# TWO AUTO CRUZE SONS



Morris

LOT 18 | AUTO RIGHT KIND 136C



AUTO CRUZE 132X | Sire of Lots 18 & 19

18

## AUTO RIGHT KIND 136C ET

PERCENTAGE(76) BULL • HOMO POLLED (T) • BLACK  
9/26/2015 • AUTO 136C • NXM2100586

MAGS THE GENERAL <b>AUTO CRUZE 132X</b> AUTO REBECA 292S	AUTO DOLLAR GENERAL 122R EXLR LUVLY 821M LESF ASPHALT 9N EXLR REBECA 1019P BASIN FRANCHISE P142 EXLR DUCHESS 7129R MAGS SHYLLO JCL HEIDI 2S	BW: 64 ADJ WW: 800 ADJ YW: 1,008 ADJ FAT: 0.12 ADJ REA: 13.13 ADJ IMF: 3.21
LH U HAUL 135U <b>AUTO BETTE 266Y</b> WLR UGLY BETTY 432U		

	CEP	BW	WW	YW	MA	CEM	SC	DOC	YG	CW	RE	MB	SMTI
EPDS	10	-0.3	68	102	29	9	-0.1	14	-0.08	37	.18	.19	58
%RANK	30	20	30	30	25	15	>95	80	80	15	95	25	25

19

## AUTO UPPERCUT 135C ET

PERCENTAGE(76) BULL • HOMO POLLED (T) • BLACK  
9/29/2015 • AUTO 135C • NXM2100585

MAGS THE GENERAL <b>AUTO CRUZE 132X</b> AUTO REBECA 292S	AUTO DOLLAR GENERAL 122R EXLR LUVLY 821M LESF ASPHALT 9N EXLR REBECA 1019P BASIN FRANCHISE P142 EXLR DUCHESS 7129R MAGS SHYLLO JCL HEIDI 2S	BW: 68 ADJ WW: 862 ADJ YW: 1,135 ADJ FAT: 0.24 ADJ REA: 12.34 ADJ IMF: 2.73
LH U HAUL 135U <b>AUTO BETTE 266Y</b> WLR UGLY BETTY 432U		

	CEP	BW	WW	YW	MA	CEM	SC	DOC	YG	CW	RE	MB	SMTI
EPDS	10	0.3	73	112	29	9	0.2	14	.06	37	.11	.11	56
%RANK	30	30	15	15	25	15	95	80	>95	15	>95	30	30

Here are two full brothers and well-bred 76% Lim-Flex herd-sire prospects. They are sired by the breed popular AUTO Cruze 132X. AUTO Cruze 132X is a son of MAGS The General and from AUTO Rebeca 292S. His semen and influence has been highly sought after by the breed's most progressive cattleman. These two bulls are from AUTO Bette 266Y, the proven show female and daughter of LH U Haul 135U from the elite donor WLR Ugly Betty 432U. These two full brothers are well made, represent progressive genetics and are solid in their EPD profile.





Morris

## LOT 20 | AUTO BASES LOADED 507D

### 20 AUTO BASES LOADED 507D

LIM-FLEX(68) BULL • HOMO POLLED (T) • HOMO BLACK (T)  
1/5/2016 • AUTO 507D • LFM2100016

MAGS THE GENERAL <b>AUTO CRUZE 132X</b> AUTO REBECA 292S	AUTO DOLLAR GENERAL 122R EXLR LUVLY 821M LESF ASPHALT 9N EXLR REBECA 1019P HUNTS HI-LITER 245G LOGAN'S CHEERLEADER 280G E A R BIG TIME K53 537 JRI MISS EXT 232H	BW: 62 ADJ WW: 897 ADJ YW: 1,337 ADJ FAT: 0.31 ADJ REA: 14.47 ADJ IMF: 3.07
JCL LODESTAR 27L <b>PBRs ZAZA 462Z</b> BT WITCH 64M		

	EPDS	CED	BW	WW	YW	MA	CEM	SC	DOC	YG	CW	RE	MB	SMTI
	10	-0.5	72	113	27	9	-	-	.08	36	.03	.11	55	
%RANK	30	20	20	15	40	15			>95	20	>95	30	30	

This 68% Lim-Flex herd-sire prospect is one of the finest bulls in this 26-year-old program. AUTO Bases Loaded 507D is a son of AUTO Cruze 132X and from a daughter of multiple-trait-leading sire JCL Lodestar 27L. This bull ranks in the top 15% for YW with a 113 and CEM with a 9, top 20% for CW with a 36, BW with a -0.5, WW with a 72, TM with 63 and CW with a 36. This double homozygous beef bull is heavy in his bone, big footed and soft in his pasterns. This well-traveling herd sire is clean up through his front-end, superb down his top line with plenty of body and capacity needed to change a cowherd for the better.

### 21 AUTO PRIME BEEF 503D

PUREBRED BULL • HOMO POLLED (T) • HOMO BLACK (T)  
1/15/2016 • AUTO 503D • NPM2100015

MAGS THE GENERAL <b>AUTO CRUZE 132X</b> AUTO REBECA 292S	AUTO DOLLAR GENERAL 122R EXLR LUVLY 821M LESF ASPHALT 9N EXLR REBECA 1019P KAJO RESPONDER 120R AHCC MISS WULF HUNT R544 AUTO BLACK DAKOTA 129J EXLR LUVLY 087F	BW: 68 ADJ WW: 732 ADJ YW: 1,495 ADJ FAT: 0.25 ADJ REA: 11.74 ADJ IMF: 3.66
AHCC WESTWIND W544 <b>AUTO PEANUT 295Y</b> AUTO NEVA 234N		

	EPDS	CED	BW	WW	YW	MA	CEM	SC	DOC	YG	CW	RE	MB	SMTI
	7	0.4	75	117	27	9	0.2	13	-.02	40	.17	-.13	48	
%RANK	60	35	15	10	40	15	95	80	90	10	95	60	55	

AUTO Prime Beef 503D is a Spring 2016 calf who just recorded and adjusted yearling weight of 1,495 lbs. with an average daily gain of 4.77 lbs. His actual performance is obviously superb, however his calculated data predictors back up what the scale reads. 503D is a homozygous polled, homozygous black son of the exclusive purebred sire, AUTO Cruze and traces back to EXLR Luvly 087F, the big-time donor for us who is found in many of our pedigrees. Statistically speaking, Prime Beef ranks in the top 15% for WW, TM and CEM EPDs, as well as being in the top 10% for WW and being below one for BW!

# TWO PBRs DUTCHES SONS



LOT 22 | AUTO RANGE ROVER 144C

## 22 AUTO RANGE ROVER 144C ET

LIM-FLEX(68) BULL • HOMO POLLED (T) • HOMO BLACK (T)  
9/27/2015 • AUTO 144C • LFM2100548

MAGS YIP  
**AUTO AMMO 135A**  
AUTO REBECA 292S

DHVO DEUCE 132R  
**PBRs DUTCHES 790X**  
SEDGWICKS DUTCHES 2280

MAGS THE GENERAL  
AUTO CARMINDA 656S  
LESF ASPHALT 9N  
EXLR REBECA 1019P  
GPFF BLAQUE RULON  
AMY JO DHAN 20L  
RR 9440 SCOTCH CAP 1483  
CIRCLE S DUTCHES 280

BW: 62  
ADJ WW: 793  
ADJ YW: 1,196  
ADJ FAT: 0.23  
ADJ REA: 14.34  
ADJ IMF: 2.87

	CED	BW	WW	YW	MA	CEM	SC	DOC	YG	CW	RE	MB	SMTI
EPDS	8	0.4	63	109	26	6	1.0	9	.03	36	.19	-.04	48
%RANK	45	35	50	20	45	60	25	90	95	20	95	50	55

AUTO Range Rover 144C is the complete package; his balanced EPD profile, low actual birth weight and scanned REA and IMF data on top of the fact that he is homozygous polled, homozygous black make him extremely appealing on paper. Then when you study his type, he is so true to the ground, offers a great deal of reach and flexibility on the move and is as good topped and shouldered as they come. The bow on this attractively wrapped package, is the fact that his dam, PBRs Dutches 790X is one of most desirably made females in the Lim-Flex population and has proven herself for us, Stowers Limousin and Milam Cattle Co. His data reads impressive with a spread of 0.4 BW to 109 YW.



PBRs DUTCHES 790X | Dam of Lots 22 - 25

PINEGAR HERD BUILDER XXIII

## 23 AUTO RIGHT KIND 149C ET

LIM-FLEX(68) BULL • HOMO POLLED (T) • HOMO BLACK (T)  
9/29/2015 • AUTO 149C • LFM2100551

MAGS YIP  
**AUTO AMMO 135A**  
AUTO REBECA 292S

DHVO DEUCE 132R  
**PBRs DUTCHES 790X**  
SEDGWICKS DUTCHES 2280

MAGS THE GENERAL  
AUTO CARMINDA 656S  
LESF ASPHALT 9N  
EXLR REBECA 1019P  
GPFF BLAQUE RULON  
AMY JO DHAN 20L  
RR 9440 SCOTCH CAP 1483  
CIRCLE S DUTCHES 280

BW: 74  
ADJ WW: 774  
ADJ YW: 996  
ADJ FAT: 0.16  
ADJ REA: 11.67  
ADJ IMF: 2.69

	CED	BW	WW	YW	MA	CEM	SC	DOC	YG	CW	RE	MB	SMTI
EPDS	8	2.0	65	108	26	6	0.8	9	.04	36	.09	-.08	47
%RANK	45	70	40	20	45	60	40	90	95	20	>95	55	60

A flushmate to AUTO Range Rover 144C, this brother is equally impressive and homozygous polled, homozygous black as well. These fall bulls are ready for heavy service; he measured with a 36 cm. SC at under a year of age and has the predictability of two of our leading donors in his background, PBRs Dutches 790X and AUTO Rebecca 292S. There isn't much guesswork in AUTO Right Kind 149C's potential for genetic impact with a pedigree like this!



LOT 25 | AUTO TAYLORED 153C

## 24 AUTO DRIVE TRAIN 145C ET

LIM-FLEX(68) BULL • HOMO POLLED (T) • HOMO BLACK (T)  
9/28/2015 • AUTO 145C • LFM2100588

MAGS YIP <b>AUTO AMMO 135A</b> AUTO REBECA 292S	MAGS THE GENERAL AUTO CARMINDA 656S LESF ASPHALT 9N EXLR REBECA 1019P GPFF BLAQUE RULON AMY JO DHAN 20L RR 9440 SCOTCH CAP 1483 CIRCLE S DUTCHESS 280	BW: 66 ADJ WW: 890 ADJ YW: 1,094 ADJ FAT: 0.13 ADJ REA: 12.12 ADJ IMF: 1.68
---	--	--

	EPDS	CED	BW	WW	YW	MA	CEM	SC	DOC	YG	CW	RE	MB	SMTI
	8	0.9	72	107	26	6	0.5	9	.00	36	.00	-.23	43	
%RANK	45	45	20	20	45	60	75	90	90	20	>95	80	75	

AUTO Drive Train 145C ratioed 104 in his weaning contemporary group with an adjusted WW of 890 lbs., one of the top bulls among his peers for WDA to weaning. He and his flushmates certainly inherited their dam's good looks! Study the pattern on PBRS Dutches 790X, we challenge you to find flaw in her! 145C ranks well above average from CED through YW, thus giving you numerous mating options and allowing you to turn him out with a variety of females.

## 25 AUTO TAYLORED 153C ET

LIM-FLEX(50) BULL • HOMO POLLED (T) • HOMO BLACK (T)  
10/5/2015 • AUTO 153C • LFM2100554

TC ABERDEEN 759 <b>EBFL YPSILANTI 420Y</b> MAGS RAMADA	C R A BEXTOR 872 5205 608 TC BLACKBIRD 4034 TNUH BLUE PRINT 245H MAGS MANDA GPFF BLAQUE RULON AMY JO DHAN 20L RR 9440 SCOTCH CAP 1483 CIRCLE S DUTCHESS 280	BW: 66 ADJ WW: 839 ADJ YW: 1,070 ADJ FAT: 0.25 ADJ REA: 14.72 ADJ IMF: 2.2
--	--	---

	EPDS	CED	BW	WW	YW	MA	CEM	SC	DOC	YG	CW	RE	MB	SMTI
	6	1.6	74	104	26	7	1.5	12	-.02	37	.49	.05	54	
%RANK	70	60	15	25	45	40	2	85	90	15	45	35	35	

The \$120,000 EBFL Ypsilanti has sired some exceptional progeny that have topped many sales across the nation. This mating in particular has created some of the finest cattle to come out of the Milam and Stowers programs over the years. Here is your opportunity to invest in the very same genetics that are working in leading programs. 153C is tailored to meet your growth and reproductive needs, he ranks in the top 15% for WW and top 2% for SC EPDs. The actual birth to weaning performance of 153C is also worth mentioning, he hit the ground at an extremely manageable 66 lbs. and weaned with a ratio of 103 and an adjusted WW of 839 lbs. If you like your bulls deep sided, good hiped and solid footed, here's your answer.



Morris

LOT 26 | AUTO HIGH TIME 177C

## 26 AUTO HIGH TIME 177C ET

LIM-FLEX(56) BULL • HOMO POLLED (T) • HOMO BLACK (T)  
10/28/2015 • AUTO 177C • LFM2100560

LH WAR HERO 195W	JCL LODSTAR 27L	BW: 70
<b>MAGS ANCHOR</b>	VERMILION ERICA LADY 1229	ADJ WW: 587
MGS XIPHOPAGOUS	DHVO DEUCE 132R	ADJ YW: 933
	MAGS SALINA	ADJ FAT: 0.29
MYTTY IN FOCUS	S A F FOCUS OF E R	ADJ REA: 11.46
<b>SBLX UNKNOWN 104U</b>	MYTTY COUNTESS 906	ADJ IMF: 4.31
MAGS MANUELA	EXLR LIMITED EDITION 765J	
	AUTO CITY NIGHTS 214H	

	CEP	BW	WW	YW	MA	CEM	SC	DOC	YG	CW	RE	MB	SMTI
EPDS	11	0.9	61	95	20	9	1.4	23	.12	32	-.02	.43	63
%RANK	20	45	55	45	95	15	4	40	>95	30	>95	10	15

AUTO High Time 177C is made as stout as they come, moderate framed, easy fleshing and built upon a ton of foot and bone substance. He is a little bit different in terms of his design than most of his contemporaries, but as intriguing. His power from head to tail and from the ground up is certainly admirable. Sired by one of the next great one, MAGS Anchor and out of leading donor SBLX Unknown, 177C has the lineage to make a substantial impact in a program. In regards to data, High Time charts double-digit CED and ranks in the top 4% for SC and top 10% for MB EPDs.

## 27 AUTO TANK 180C ET

LIM-FLEX(62) BULL • HOMO POLLED (T) • HOMO BLACK (T)  
11/15/2015 • AUTO 180C • LFM2100561

COLE WINDFALL 144W	COLEMAN PRODUCTION 608	BW: 70
<b>AUTO KING JAMES 162Z</b>	COLE MISS FIRSTDOWN 6162S	ADJ WW: 800
AUTO LUCKIE 246W	WLR DIRECT HIT	ADJ YW: 1,272
	TYEJ DB SERENITY	ADJ FAT: 0.18
MYTTY IN FOCUS	S A F FOCUS OF E R	ADJ REA: 15.78
<b>SBLX UNKNOWN 104U</b>	MYTTY COUNTESS 906	ADJ IMF: 2.31
MAGS MANUELA	EXLR LIMITED EDITION 765J	
	AUTO CITY NIGHTS 214H	

	CEP	BW	WW	YW	MA	CEM	SC	DOC	YG	CW	RE	MB	SMTI
EPDS	13	0.4	71	109	30	7	1.4	20	-.17	25	.39	.09	56
%RANK	10	35	20	20	20	40	4	55	55	55	65	35	25

In terms of EPD power, AUTO Tank 180C is one who sorts himself to top of the search list pretty quickly. If you aren't chasing just one trait, no need to look any further. This herd-sire prospect by one of the very best ever raised here, King James, is in the top 10% for CED and TM and in the top 20% for WW and YW, as well as being in the top 25% for SMTI. Yes, there are these impressive highlights, but what stands out is that he is in the top 50% for nearly every trait from birth to terminal.

## 28 AUTO SHARPER IMAGE 546C

PUREBRED BULL • HET POLLED (T) • HOMO BLACK (T)  
10/29/2015 • AUTO 546C • NPM2093791

MAGS XYLOPOLIST  
**AUTO BLACK COFFEE 512A**  
AUTO COFFE CAKE 699W

MAGS Y-AXIS  
**AUTO SHANA 417A**  
MAGS MANUELA

DHVO DEUCE 132R  
MAGS STRAWBERRY  
AUTO BLAQUE LABEL 176S  
AUTO RAMONA 257T  
TC ABERDEEN 759  
MAGS UAHUKA  
EXLR LIMITED EDITION 765J  
AUTO CITY NIGHTS 214H

BW: 65  
ADJ WW: 814  
ADJ YW: 1,170  
ADJ FAT: 0.22  
ADJ REA: 12.86  
ADJ IMF: 2.94

	CED	BW	WW	YW	MA	CEM	SC	DOC	YG	CW	RE	MB	SMTI
EPDS	9	1.9	63	99	27	7	0.9	25	-16	32	.42	-.05	49
%RANK	35	65	50	35	40	40	30	35	60	30	60	50	55

Long-bodied, long-strided, deep and loaded with pedigree. This Black Coffee son has the "breeding bull" look to him. He is ready to turn out with cows and withstand the test of time over multiple breeding seasons. His sire was the top selection for Begert/Keetons and has been used successfully both artificially and naturally. His dam is a Y-Axis x Manuela female we think quite highly of.



LOT 28 | AUTO SHARPER IMAGE 546C



LOT 30 | AUTO CRAFTSMAN 569C

## 30 AUTO CRAFTSMAN 569C

LIM-FLEX(43) BULL • HET POLLED (T) • DOUBLE BLACK  
11/1/2015 • AUTO 569C • LFM2100024

CONNEALY CONSENSUS 7229  
**EXAR COUNSEL 1016B**  
EXAR EVAS 71561

AUTO GUNN POINT 192Y  
**AUTO KIERA 438A**  
MAGS MANUELA

CONNEALY CONSENSUS  
BLUE LILLY OF CONANGA 16  
EXAR 263C  
G A R EVAS EXT 1525  
LH RODEMASTER 338R  
AVA JO DHVO 721R  
EXLR LIMITED EDITION 765J  
AUTO CITY NIGHTS 214H

BW: 50  
ADJ WW: 876  
ADJ YW: 1,175  
ADJ FAT: 0.19  
ADJ REA: 13.05  
ADJ IMF: 3.21

	CED	BW	WW	YW	MA	CEM	SC	DOC	YG	CW	RE	MB	SMTI
EPDS	12	-0.7	61	94	30	8	1.0	-	-0.1	25	.17	.50	67
%RANK	15	15	55	45	20	25	25		90	55	95	4	10

In terms of growth curves, this bull is intriguing. AUTO Craftsman elevates from an 82 ratio for BW up to a 108 ratio for WW. A cattleman's curve bender who can be used with confidence on heifers. His EPDs prove his calving-ease as well—he ranks in the top 15% for CED and BW EPDs. He excels for marbling as well, ranking in the top 4% and the top 10% for SMTI.

## 29 AUTO HIGH GRADE 157C ET

LIM-FLEX(31) BULL • HOMO POLLED (T) • HOMO BLACK (T)  
10/10/2015 • AUTO 157C • LFM2100818

TC ABERDEEN 759  
**EBFL YPSILANTI 420Y**  
MAGS RAMADA

BALDRIDGE RANGERIDER R827  
**MAGS WHISPERING CANYON**  
MAGS THUNDER CANYON

C R A BEXTOR 872 5205 608  
TC BLACKBIRD 4034  
TNUH BLUE PRINT 245H  
MAGS MANDA  
BR MIDLAND  
BALDRIDGE FOREVER LADY N4  
EXAR NEW DESIGN 2997  
MAGS PARADISE CANYON

BW: 72  
ADJ WW: 695  
ADJ YW: 1,100  
ADJ FAT: 0.16  
ADJ REA: 14.67  
ADJ IMF: 3.23

	CED	BW	WW	YW	MA	CEM	SC	DOC	YG	CW	RE	MB	SMTI
EPDS	13	0.0	62	106	25	10	1.5	-	-0.4	31	.55	.52	68
%RANK	10	25	55	20	55	4	4		85	30	35	4	5

AUTO High Grade is just that! He is in the top 4% for MB and one of the leading IMF scanning bulls in the sale. He also ranks in the top 4% for SC and CEM, top 5% for SMTI, top 10% for CED and top 20% for YW. 157D traces back to MAGS Paradise Canyon, the donor who produced more than 100 recorded progeny for Magness Land & Cattle.

## 31 AUTO FAST BREAK 559C

LIM-FLEX(43) BULL • HOMO POLLED (T) • HET BLACK (T)  
10/30/2015 • AUTO 559C • LFM2100022

CONNEALY CONSENSUS 7229  
**EXAR COUNSEL 1016B**  
EXAR EVAS 71561

AUTO GUNN POINT 192Y  
**AUTO EMELY 445A**  
MAGS MANUELA

CONNEALY CONSENSUS  
BLUE LILLY OF CONANGA 16  
LH RODEMASTER 338R  
AVA JO DHVO 721R  
EXLR LIMITED EDITION 765J  
AUTO CITY NIGHTS 214H

BW: 68  
ADJ WW: 704  
ADJ YW: 1,300  
ADJ FAT: 0.27  
ADJ REA: 16.79  
ADJ IMF: 3.63

	CED	BW	WW	YW	MA	CEM	SC	DOC	YG	CW	RE	MB	SMTI
EPDS	9	2.1	64	115	28	7	1.0	-	.02	42	.56	.58	71
%RANK	35	70	45	10	30	40	25		95	10	35	3	3

Consensus and Lodestar combined with Manuela results in a great deal of breeding value. 559C hits a home run being homozygous polled and in the top 3% for MB and SMTI, as well as being above average for REA and CW. His balance of carcass traits makes him a viable option to sire profit generators on the rail. Notice he ratioed 106 for Adj. YW and 117 for REA.



LOT 32 | AUTO CARMELA 207C

## 32 AUTO CARMELA 207C ET

LIM-FLEX(50) COW • POLLED • BLACK  
1/1/2015 • AUTO 207C • LFF2088651

RED NORTHLINE FAT TONY 605U <b>PZC TMAS RED ZONE 2795</b> WHITESTONE LANA V150	RED SVR GANGSTER 14S RED NORTHLINE RUBY 0305N	BW: 65 ADJ WW: 764 ADJ YW: 1,151 ADJ FAT: 0.36 ADJ REA: 11.54 ADJ IMF: 5.47
EXLR LIMITED EDITION 765J <b>MAGS MANUELA</b> AUTO CITY NIGHTS 214H	EXLR POLLED BENCHMARK709G WULFS GLENDA 7021G COLE FIRST DOWN 46D MISS WOLFETTE 9049X	

	CED	BW	WW	YW	MA	CEM	SC	DOC	YG	CW	RE	MB	SMTI
EPDS	10	2.3	67	94	23	6	0.7	-	.13	27	.11	.65	73
%RANK	30	75	35	45	75	60	65	>95	>95	45	>95	2	2

### Due 4.3.17 to AUTO Real Deal 150B(HB/HP)

Here is a sale feature and one of the finest MAGS Manuela daughters to ever sell at auction. She is sired by the Red Angus sire PZC TMAS Red Zone 2795, a son of Red Northline Fat Tony from the Whitestone Lana V150 donor. This black, polled 50% Lim-Flex female ranks in the top 2% for MB with a .65 and SMTI with a 73. She also has a breed-leading IMF scan number of 6.33 and still posts an REA scan data of 12.61 This female is as good as you can ever want one made. She is



**MAGS MANUELA** | Dam of Lot 32

flawless in her design, straight in her lines, feminine in her look and extremely sound in her structure. This female is big league and has every ingredient needed to be someone's next donor cow.



LOT 33 | AUTO CHLOE 264C



LOT 34 | AUTO CICI 633C

**33 AUTO CHLOE 264C ET**

LIM-FLEX(62) COW • HOMO POLLED (T) • HOMO BLACK (T)  
3/3/2015 • AUTO 264C • LFF2088606

COLE WINDFALL 144W <b>AUTO KING JAMES 162Z</b> AUTO LUCKIE 246W	COLEMAN PRODUCTION 608 COLE MISS FIRSTDOWN 6162S WLR DIRECT HIT TYEJ DB SERENITY	BW: 68 ADJ WW: 590 ADJ YW: 1,034 ADJ FAT: 0.29 ADJ REA: 13.49 ADJ IMF: 3.85
BASIN FRANCHISE P142 <b>PBRs PINA MARIE 811U</b> CARROUSELS PINA COLADA	C A FUTURE DIRECTION 5321 BASIN CHLOE 812L AUTO BLACK DAKOTA 129J ELMW GINNIE P58G	

	CED	BW	WW	YW	MA	CEM	SC	DOC	YG	CW	RE	MB	SMTI
EPDS	11	0.8	61	100	30	8	-1.1	6	-0.1	29	.41	-.02	49
%RANK	20	40	55	35	20	25	15	95	75	40	60	45	50

Due 4.2.17 to AUTO Cruze 132X (HB/HP)

AUTO Chloe 264C is one of the top bred females in the offering! She is a homozygous polled, homozygous black daughter of AUTO King James 162Z. King James is the once Ozark Empire grand champion bull and now leading sire for Burnett Brothers in Texas. He is a son of the big-numbered COLE Windfall 144W and from the once All-American Futurity Champion Female AUTO Luckie 246W. Her dam, PBRs Piña Marie 811U, is the leading Pinegar and Edwards Land & Cattle Co. donor. She is the big-league donor and daughter of Basin Franchise from the once national champion female Carrouseles Piña Colada. She sells bred to one of the breed's most popular bulls in the entire breed, the high percentage sire, AUTO Cruze 132X.

**34 AUTO CICI 633C**

PERCENTAGE(81) COW • HET POLLED (T) • HOMO BLACK (T)  
4/27/2015 • AUTO 633C • NXF2088382

COLE WINDFALL 144W <b>AUTO KING JAMES 162Z</b> AUTO LUCKIE 246W	COLEMAN PRODUCTION 608 COLE MISS FIRSTDOWN 6162S WLR DIRECT HIT TYEJ DB SERENITY	BW: 68 ADJ WW: 563 ADJ YW: 882 ADJ FAT: 0.11 ADJ REA: 13.47 ADJ IMF: 3.4
AUTO BLAQUE LABEL 176S <b>AUTO GRACE 626X</b> AUTO MOXIE 695T	LESF ASPHALT 9N EXLR REBECA 1019P AUTO POWER TRAIN 101R AUTO REESE CUP 283R	

	CED	BW	WW	YW	MA	CEM	SC	DOC	YG	CW	RE	MB	SMTI
EPDS	8	1.4	64	96	29	5	0.8	12	-.23	29	.24	-.28	41
%RANK	45	55	45	40	25	75	40	85	40	40	90	90	85

Due 4.2.17 to AUTO Cruze 132X (HB/HP)

AUTO Cici 633C is an 81% Limousin polled, homozygous black female. She is a daughter of AUTO King James 162Z, the once Ozark Empire Fair grand champion bull and now leading sire for Burnett Brothers of Texas. He is the big-numbered son of COLE Windfall 144W from the once All-American Futurity Champion Female AUTO Luckie 246W. Her dam is a daughter of AUTO Blaque Label 176S, AUTO Grace 626X. This female is very appealing in her design, feminine through her front end and a standout when in a crowd of other females.



Morris

LOT 35 | AUTO COPY CAT 218C

## 35 AUTO COPY CAT 218C ET

LIM-FLEX(50) COW • HOMO POLLED (T) • BLACK  
1/14/2015 • AUTO 218C • LFF2077540

S A V BRILLIANCE 8077  
**PVF INSIGHT 0129**  
P V F MISSIE 790

AUTO BLACK DAKOTA 129J  
**CARROUSELS PEACHES 4330P**  
ELMW GINNIE P58G

S A V BISMARCK 5682  
S A V BLACKCAP MAY 5270  
P V F NEW HORIZON 001  
P V F MISS RAPTOR 024

EXLR DAKOTA 353G  
DFLC JET SET BPC 34Y  
TCDT MR T.D.'S POWER PACK  
ELMW POLLED ECSTASY 67E

BW: 70  
ADJ WW: 647  
ADJ YW: 1,121  
ADJ FAT: 0.20  
ADJ REA: 12.55  
ADJ IMF: 3.16

	CED	BW	WW	YW	MA	CEM	SC	DOC	YG	CW	RE	MB	SMTI
EPDS	10	1.0	60	102	28	8	0.8	11	-.33	29	.99	.03	52
%RANK	30	45	60	30	30	25	55	90	15	40	1	40	40

**Due 4.24.17 to AUTO Cruze 132X (HB/HP)**

What a great donor female in the making! AUTO Copy Cat 218C is an extremely well-made female from the heart of the 26-year running program at Pinegar Limousin. She is a daughter of the Angus sire PVF Insight and from the elite Pinegar donor Carrousel Peaches, the full sister to the once national champion Carrousel Piña Colada. This female ranks in the top 1% for REA with a .99. She scanned a 13.43 for REA and 3.56 for IMF. AUTO Copy Cat 218C is moderate in



CARROUSELS PEACHES 4330P | Dam of Lot 35

her frame, so clean through her front end and yet extremely deep in her flank and massive in her rib shape. Her future calf sired by AUTO Cruze 132Z is a super mating that is destined to be great.





LOT 36 | AUTO CHENAI 222C



LOT 37 | AUTO FASHION 217C

**36 AUTO CHENAI 222C ET**

LIM-FLEX(50) COW • HOMO POLLED (T) • BLACK  
1/17/2015 • AUTO 222C • LFF2088590

EXAR UPSHOT 0562B	SITZ UPWARD 307R	BW:	64
<b>EXAR DENVER 2002B</b>	EXAR BARBARA T020	ADJ WW:	729
EXAR ROYAL LASS 1067	EXAR 263C	ADJ YW:	1,033
	BR ROYAL LASS 19-132	ADJ FAT:	0.32
AUTO BLACK DAKOTA 129J	EXLR DAKOTA 353G	ADJ REA:	12.53
<b>CARROUSELS PEACHES 4330P</b>	DFLC JET SET BPC 34Y	ADJ IMF:	4.15
ELMW GINNIE P58G	TCDT MR T.D.'S POWER PACK		
	ELMW POLLED ECSTASY 67E		

	CED	BW	WW	YW	MA	CEM	SC	DOC	YG	CW	RE	MB	SMTI
EPDS	11	-0.1	64	94	33	10	1.0	15	-.09	28	.80	.31	61
%RANK	20	25	45	45	10	4	25	75	75	40	10	15	15

Due 4.25.16 to AUTO Silverado 543B (HB/HP)

Absolutely flawless in her design, superb in her make up and the epitome of nothing but greatness is AUTO Chenai 222C. She is a 50% Lim-Flex black, homozygous polled daughter of EXAR Denver. He is the big-numbered son of EXAR Upshot 0562B from the EXAR Royal Lass 1067 donor. Her dam is the proven Pinegar donor Carrousel Piña Colada 4330P, the full sister to the once national champion Carrousel Piña Colada. AUTO Chenai 222C ranks in the top 4% for CEM with a 10, top 10% for MK with a 33, REA with a .80 and top 15% for TM with a 65, MB with a .31 and SMTI with a 61.

**37 AUTO FASHION 217C ET**

LIM-FLEX(50) COW • HET POLLED (T) • BLACK  
1/14/2015 • AUTO 217C • LFF2077539

EXAR UPSHOT 0562B	SITZ UPWARD 307R	BW:	55
<b>EXAR DENVER 2002B</b>	EXAR BARBARA T020	ADJ WW:	663
EXAR ROYAL LASS 1067	EXAR 263C	ADJ YW:	1,105
	BR ROYAL LASS 19-132	ADJ FAT:	0.25
AUTO BLACK DAKOTA 129J	EXLR DAKOTA 353G	ADJ REA:	12.85
<b>CARROUSELS PEACHES 4330P</b>	DFLC JET SET BPC 34Y	ADJ IMF:	3.59
ELMW GINNIE P58G	TCDT MR T.D.'S POWER PACK		
	ELMW POLLED ECSTASY 67E		

	CED	BW	WW	YW	MA	CEM	SC	DOC	YG	CW	RE	MB	SMTI
EPDS	11	-1.3	58	96	33	10	1.0	15	-.18	28	.85	.19	56
%RANK	20	10	70	40	10	4	25	75	55	40	4	25	25

Due 4.2.17 to AUTO Silverado 543B (HB/HP)

Here is a full sister to Lot 36. AUTO Fashion 217C ranks in the top 4% for CEM with a 10 and REA with .85, top 10% for BW with a -1.3 and MK with a 33. This amazing daughter of EXAR Denver 2002B from Carrousel Peaches 4330P is one of the featured spring bred females from the heart of the Pinegar program. Ed's belief has always been to have planned matings and common sense for the future and betterment of the breed. We firmly believe this female is one of the finest of the offering and we are certain when you see her under the tent sale day that you'll agree.

# SPRING BREDS



LOT 38 | AUTO RHONDA 225C



LOT 39 | AUTO CARLOTTA 253C

## 38 AUTO RHONDA 225C ET

LIM-FLEX(50) COW • POLLED • HET BLACK (T)  
2/20/2015 • AUTO 225C • LFF2077544

S A V BRILLIANCE 8077  
**PVF INSIGHT 0129**  
P V F MISSIE 790

EXLR LIMITED EDITION 765J  
**MAGS MANUELA**  
AUTO CITY NIGHTS 214H

S A V BISMARK 5682  
S A V BLACKCAP MAY 5270  
P V F NEW HORIZON 001  
P V F MISS RAPTOR 024  
EXLR POLLED BENCHMARK709G  
WULFS GLENDA 7021G  
COLE FIRST DOWN 46D  
MISS WOLFETTE 9049X

BW: 66  
ADJ WW: 663  
ADJ YW: 997  
ADJ FAT: 0.31  
ADJ REA: 13.43  
ADJ IMF: 4.54

	CED	BW	WW	YW	MA	CEM	SC	DOC	YG	CW	RE	MB	SMTI
EPDS	12	1.9	62	103	29	8	0.9	22	-.19	35	.77	.43	66
%RANK	15	65	55	30	25	25	30	45	50	20	10	10	10

Due 4.2.17 to AUTO Cruze 132X (HB/HP)

AUTO Rhonda 225C could be one of the finest females to ever represent the AUTO prefix. She is a daughter of PVF Insight, a son of SAV Brilliance 8077. Her dam is MAGS Manuela, the all-time money earner and now deceased but still breed-leading donor. This young female is made great from the ground up, stout in her bone and foot structure and yet still maintains a tremendous amount of femininity and balance to her. We love so much about this female and are certain that if you love and appreciate Limousin like the Pinegar crew does you will agree. Her future calf sired by the breed-leading and popular AUTO Cruze 132Z will result in a 75% Lim-Flex calf we feel will be very appealing.

## 39 AUTO CARLOTTA 253C ET

LIM-FLEX(75) COW • POLLED • HET BLACK (T)  
4/23/2015 • AUTO 253C • LFF2088657

BASIN FRANCHISE P142  
**MAGS UNITE TOGETHER**  
MAGS REMBRANDT

EXLR LIMITED EDITION 765J  
**MAGS MANUELA**  
AUTO CITY NIGHTS 214H

C A FUTURE DIRECTION 5321  
BASIN CHLOE 812L  
EF MAIN STAY 541M  
MAGS MANDARIN 425L  
EXLR POLLED BENCHMARK709G  
WULFS GLENDA 7021G  
COLE FIRST DOWN 46D  
MISS WOLFETTE 9049X

BW: 68  
ADJ WW: 528  
ADJ YW: 857  
ADJ FAT: 0.14  
ADJ REA: 13.67  
ADJ IMF: 4.56

	CED	BW	WW	YW	MA	CEM	SC	DOC	YG	CW	RE	MB	SMTI
EPDS	8	3.3	60	93	28	8	0.8	25	-.07	38	.58	.52	68
%RANK	45	90	60	50	30	25	55	35	80	15	30	4	5

Due 4.2.17 to AUTO Power Plus 133B (HB/HP)

This black, polled 75% Lim-Flex heifer represents everything good about Limousin. She is a daughter of MAGS Unite Together and from the famed and now deceased MAGS Manuela. She ranks in the top 4% in MB with a .52, top 5% for SMTI with a 68 and top 15% for CW with a 38. This female represents the predictable pedigree, the flawless design and strong EPD profile needed to capture anyone's attention.



LOT 40 | AUTO CAPRICE 260C

**40 AUTO CAPRICE 260C ET**

LIM-FLEX(37) COW • HOMO POLLED (T) • HOMO BLACK (T)  
3/1/2015 • AUTO 260C • LFF2088650

CONNEALY CONSENSUS 7229  
**MAGS ACAPULCO**  
EXLR LUVLY 821M

RITO 112 OF 2536 RITO 616  
**MAGS UBEDA**  
AUTO MS NEW DESIGN 827P

CONNEALY CONSENSUS  
BLUE LILLY OF CONANGA 16  
AUTO BLACK DAKOTA 129J  
EXLR LUVLY 084F

RITO 616 OF 4820 6807  
G A R PRECISION 2536  
EXAR NEW DESIGN 227  
AUTO MARLEE 225M

BW: 70  
ADJ WW: 619  
ADJ YW: 942  
ADJ FAT: 0.24  
ADJ REA: 11.91  
ADJ IMF: 6.56

	CED	BW	WW	YW	MA	CEM	SC	DOC	YG	CW	RE	MB	SMTI
EPDS	7	1.5	65	101	25	8	0.5	17	-.03	30	.27	.83	80
%RANK	60	55	40	30	55	25	75	65	90	35	85	1	1

**Due 4.25.17 to AUTO Real Deal 150B (HB/HP)**

This Lim-Flex heifer is the result of the blending of two of the very best purebred Angus lines of cattle in Connealy Consensus and Rito 112 of 2536. This daughter of MAGS Acapulco is from the female MAGS Abeda. She just happens to be one of the highest marbling females in the entire breed ranking in the top 1% with a .83 and \$MTI with an 80. She also scanned a 6.33 for IMF. If you want to buy into a female



AUTO REAL DEAL | Service Sire to Lot 40

that offers tons of value to your program, consider this remarkable Lim-Flex female.



LOT 41 | AUTO CLEO 278C



LOT 42 | AUTO CHLOE 276C

## 41 AUTO CLEO 278C ET

PUREBRED COW • HOMO POLLED (T) • HOMO BLACK (T)  
4/5/2015 • AUTO 278C • NPF2088647

KRVN NASKAR 013N <b>WLR DIRECT HIT</b> MAGS NIGHT AMBUSH	GPFF BLAQUE RULON WL JU JU GAL 149J AUTO BLACK DAKOTA 129J MISS WULFETTE 6230F	BW: 72 ADJ WW: 569 ADJ YW: 879 ADJ FAT: 0.12 ADJ REA: 15.46 ADJ IMF: 4.42
TNUH BLUE PRINT 245H <b>MAGS SALMETTO</b> MAGS PALMETTO	WADDLES COBALT 3106 TNUH MISS C245 BR MIDLAND MISS WULFETTE 6230F	

	CED	BW	WW	YW	MA	CEM	SC	DOC	YG	CW	RE	MB	SMTI
EPDS	8	2.7	63	86	29	2	1.1	3	-.35	23	1.00	-.23	43
%RANK	45	80	50	65	25	95	25	>95	10	60	1	80	75

Due 4.22.17 to AUTO Cruze 132X (HB/HP)

One of the breed's top ribeye females is this purebred who posts a 1.00 and ranks in the top 1%. She also scanned a 13.94 for REA and 3.73 for IMF. AUTO Cleo 278C is a daughter of WLR Direct Hit and from MAGS Salmetto, a proven donor and daughter of TNUH Blue Print now owned by Stowers Limousin of Texas. This female's future purebred calf sired by the popular AUTO Cruze 132X will result into something very special for the new owner, and we feel will have tremendous value due to its prominent pedigree.

## 42 AUTO CHLOE 276C ET

PUREBRED COW • HOMO POLLED (T) • HOMO BLACK (T)  
4/2/2015 • AUTO 276C • NPF2088646

KRVN NASKAR 013N <b>WLR DIRECT HIT</b> MAGS NIGHT AMBUSH	GPFF BLAQUE RULON WL JU JU GAL 149J AUTO BLACK DAKOTA 129J MISS WULFETTE 6230F	BW: 66 ADJ WW: 619 ADJ YW: 909 ADJ FAT: 0.12 ADJ REA: 13.26 ADJ IMF: 2.81
TNUH BLUE PRINT 245H <b>MAGS SALMETTO</b> MAGS PALMETTO	WADDLES COBALT 3106 TNUH MISS C245 BR MIDLAND MISS WULFETTE 6230F	

	CED	BW	WW	YW	MA	CEM	SC	DOC	YG	CW	RE	MB	SMTI
EPDS	8	1.9	67	90	29	2	1.1	3	-.36	23	.74	-.51	35
%RANK	45	65	35	55	25	95	25	>95	10	60	15	>95	>95

Due 4.23.17 to AUTO Lode Up 137B (HB/HP)

MAGS Salmetto has proven her herself time and time again. One of her most notable contributions to the breed she has made is SBLX Una, the dam of AUTO Audacious, past MOE award winner for DeMar Farms. This Salmetto daughter sired by WLR Direct Hit has been making them ipolled, black and good! for over a decade now; and in recent years sired AHFF Nalanie and AHFF Drifter who both hung banners for Heart Felt Farms of Pennsylvania. There is no doubt that this deep-sided, straight-lined gem will have the same great impact both her sire and dam have had.



LOT 44 | AUTO CARLEY 228C



LOT 45 | AUTO CHARLA 270C

**43 AUTO CLARITY 275C ET**

PUREBRED COW • HOMO POLLED (T) • HOMO BLACK (T)  
3/21/2015 • AUTO 275C • NPF2088644

KRVN NASKAR 013N <b>WLR DIRECT HIT</b> MAGS NIGHT AMBUSH	GPIFF BLAQUE RULON WL JU JU GAL 149J AUTO BLACK DAKOTA 129J MISS WULFETTE 6230F	BW: 73 ADJ WW: 597 ADJ YW: 767 ADJ FAT: 0.16 ADJ REA: 13.61 ADJ IMF: 3.38
TNUH BLUE PRINT 245H <b>MAGS SALMETTO</b> MAGS PALMETTO	WADDLES COBALT 3106 TNUH MISS C245 BR MIDLAND MISS WULFETTE 6230F	

	CED	BW	WW	YW	MA	CEM	SC	DOC	YG	CW	RE	MB	SMTI
EPDS	8	3.3	61	85	29	2	1.1	3	-.34	23	.81	-.39	37
%RANK	45	90	55	70	25	95	25	>95	15	60	10	>95	95

Due 4.21.17 to AUTO Lode Up 137B (HB/HP)

A full sister to Lot 51, the MAGS Salmetto x WLR Direct Hit mating worked again! These females are so practical in their design, fault-free in their movement and offer that additional REA and YG data that increases total end product yield. These females will go on to make exceptional replacements and herd sires alike.

**44 AUTO CARLEY 228C ET**

PUREBRED COW • HET POLLED (T) • HOMO BLACK (T)  
2/3/2015 • AUTO 228C • NPF2088648

DHVO DEUCE 132R <b>MAGS XTRA WET</b> MAGS PUDDLES	GPIFF BLAQUE RULON AMY JO DHAN 20L JCL LODESTAR 27L CANE RIDGE POLL ANGEL 318	BW: 68 ADJ WW: 569 ADJ YW: 810 ADJ FAT: 0.27 ADJ REA: 11.41 ADJ IMF: 3.89
TNUH BLUE PRINT 245H <b>MAGS SALMETTO</b> MAGS PALMETTO	WADDLES COBALT 3106 TNUH MISS C245 BR MIDLAND MISS WULFETTE 6230F	

	CED	BW	WW	YW	MA	CEM	SC	DOC	YG	CW	RE	MB	SMTI
EPDS	9	2.1	60	75	25	6	0.5	16	-.10	24	.36	-.06	46
%RANK	35	70	60	85	55	60	75	70	75	55	70	50	60

Due 4.2.17 to AUTO Lode Up 137B (HB/HP)

MAGS Xtra Wet is known for his unrivaled structural soundness and longevity. When you analyze his skeleton, all the angles align in a fashion that promote athleticism. With that being said, this female absolutely blows us a way with her middle rib shape, the amount of muscle she carries and how high her neck ties into the top of her shoulder. She has her sire's sweeping hind leg and flex. This is one that could dam your next show heifer or drop the next great herd sire on the ground.

**45 AUTO CHARLA 270C ET**

PUREBRED COW • HOMO POLLED (T) • HOMO BLACK (T)  
3/11/2015 • AUTO 270C • NPF2088618

MAGS XYLOPOLIST <b>AUTO BLACK COFFEE 512A</b> AUTO COFFE CAKE 699W	DHVO DEUCE 132R MAGS STRAWBERRY AUTO BLAQUE LABEL 176S AUTO RAMONA 257T	BW: 72 ADJ WW: 604 ADJ YW: 850 ADJ FAT: 0.28 ADJ REA: 11.89 ADJ IMF: 4.31
TNUH BLUE PRINT 245H <b>MAGS SALMETTO</b> MAGS PALMETTO	WADDLES COBALT 3106 TNUH MISS C245 BR MIDLAND MISS WULFETTE 6230F	

	CED	BW	WW	YW	MA	CEM	SC	DOC	YG	CW	RE	MB	SMTI
EPDS	9	2.4	62	87	28	6	0.9	6	-.13	24	.45	-.08	47
%RANK	35	75	55	65	30	60	40	95	65	55	55	55	60

Due 4.2.17 to AUTO Cruze 132X (HB/HP)

AUTO Charla 270C is one of the sleekest-fronted, neatly designed females in this year's offering. Though she is ultra-refined on the profile, she still is easy-keeping and super low maintenance. Here is one that can maintain on minimal inputs. With a 4.3 IMF score, she is one of the standouts in her scan group. MAGS Salmetto is a big-league donor who has been hitting home runs here at Pinegar Limousin since 2013. Bred to AUTO Cruze, your return on investment will be right around the corner.

# SPRING BREDS



LOT 46 | AUTO CUDDLES 622C



LOT 48 | AUTO CAM 608C

## 46 AUTO CUDDLES 622C

LIM-FLEX(81) COW • HET POLLED (T) • HOMO BLACK (T)  
5/15/2015 • AUTO 622C • LFF2086856

MAGS UR A ROBIN <b>MAGS ROBIN HOOD 276Y</b> MAGS UNDERFOOT	LH RODEMASTER 338R BOHI RED ROBIN 282R EXLR EXCELLANTE 251L AUTO KYRIA 232K DHVO DEUCE 132R BOHI RHONDA 314R EXLR LIMITED EDITION 765J AUTO CITY NIGHTS 214H	BW: 70 ADJ WW: 695 ADJ YW: 948 ADJ FAT: - ADJ REA: - ADJ IMF: -
MAGS XYLOID <b>AUTO ZOFIA 439Z</b> MAGS MANUELA		

	CED	BW	WW	YW	MA	CEM	SC	DOC	YG	CW	RE	MB	SMTI
EPDS	7	3.7	68	101	33	6	0.8	19	.01	35	.17	.23	59
%RANK	60	95	30	30	10	60	55	60	95	20	95	20	20

Due 4.27.17 to AUTO Cruze 132X (HB/HP)

MAGS Robin Hood is the absolute pinnacle for maternal ability as he is the trait leader for MK and TM, and you see those traits in action through this superb daughter. AUTO Cuddles 622C is in the top 10% for MK and TM, as well as being in the top 20% for CW and MB, two traits that don't always go hand in hand but when they do, it equals substantial income potential. AUTO Zofia hasn't let us down to date, she hung banners for Cody Heavin as a show heifer and produced this exceptional heifer as a first-calf heifer.

## 47 AUTO CYNTHIA 619C

LIM-FLEX(75) COW • HOMO POLLED (T) • HOMO BLACK (T)  
4/6/2015 • AUTO 619C • LFF2088380

MAGS THE GENERAL <b>AUTO CRUZE 132X</b> AUTO REBECA 292S	AUTO DOLLAR GENERAL 122R EXLR LUVLY 821M LESF ASPHALT 9N EXLR REBECA 1019P LESF ASPHALT 9N EXLR REBECA 1019P EXAR PRECISION 226 AUTO MELINDA 229M	BW: 66 ADJ WW: 542 ADJ YW: 850 ADJ FAT: 0.21 ADJ REA: 12.1 ADJ IMF: 5.07
AUTO BLAQUE LABEL 176S <b>AUTO ISABELLA 639X</b> AUTO MISS PERCISION 845P		

	CED	BW	WW	YW	MA	CEM	SC	DOC	YG	CW	RE	MB	SMTI
EPDS	8	0.0	68	103	22	8	0.3	-	-.07	31	.29	.23	59
%RANK	45	25	30	30	80	25	95	-	80	30	80	20	20

Due 4.2.17 to AUTO Lode Up 137B (HB/HP)

Quite simply summarized, here is a daughter of the great high percentage sire, AUTO Cruze 132X who posts a 0 for BW, 103 for YW and in the top 20% for MB and SMTI. AUTO Cynthia 619C is a homozygous polled, homozygous black 75% Lim-Flex female who ratioed a 104 for REA and 101 for IMF at scanning time.



**AUTO KING JAMES 162Z** | Sire of Lot 48

Due 4.2.17 to AUTO Gunn Point 192Y (HetB/HP)

Here sells a maternal sister to AUTO Brinn, Dominic Rupert's selection from a past AUTO sale. She went on to be a class winner at the Eastern Regional and now resides in the donor pen at Legacy Farms in Illinois. AUTO Cam 608C is rock solid in terms of data projections as she is in the top 5% for MK, top 10% for TM and on the desirable side of average for CED, BW, WW, YW, SC, YG, CW and REA! She is sired by the lead-off bull at Burnett Brothers, AUTO King James. He is one of the very best to ever walk through the sale ring here in Springfield.

## 48 AUTO CAM 608C

LIM-FLEX(62) COW • HET POLLED (T) • BLACK  
3/6/2015 • AUTO 608C • LFF2088258

COLE WINDFALL 144W <b>AUTO KING JAMES 162Z</b> AUTO LUCKIE 246W	COLEMAN PRODUCTION 608 COLE MISS FIRSDOWN 6162S WLR DIRECT HIT TYEJ DB SERENITY LJC LANCER 806 LJC HANNAH 106 LVLS POLLED BLACK JACK CANE RIDGE POLL ANGEL 318	BW: 68 ADJ WW: 649 ADJ YW: 969 ADJ FAT: - ADJ REA: 14.74 ADJ IMF: 3.23
LJC MISSION STATEMENT P27 <b>MAGS HANNAH 9726W</b> MAGS PARKER		

	CED	BW	WW	YW	MA	CEM	SC	DOC	YG	CW	RE	MB	SMTI
EPDS	9	1.1	67	105	34	4	1.2	9	-.22	34	.50	-.19	45
%RANK	35	50	35	25	5	85	15	90	40	25	45	70	65

# 49 AUTO CERISE 621C

LIM-FLEX(75) COW • HET POLLED (T) • HET BLACK (T)  
4/8/2015 • AUTO 621C • LFF2088381

DHVO DEUCE 132R <b>COLE ZONE 89Z</b> COLE 02L	GPFF BLAQUE RULON AMY JO DHAN 20L COLE FIRST DOWN 46D COLE 37B IBRR BLACK SHADOW BLACK INK POLLED JINGLE GAR PRECISION 1680 HILLHOUSE PROMPTITUDE9101	BW: 62 ADJ WW: 599 ADJ YW: 963 ADJ FAT: 0.28 ADJ REA: 11.48 ADJ IMF: 5.47
AUTO DIESEL POWER 953R <b>AUTO ZOE 219U</b> PRECISIONSPROMPTITUDEP417		

	CED	BW	WW	YW	MA	CEM	SC	DOC	YG	CW	RE	MB	SMTI
EPDS	9	-0.4	65	102	27	6	0.4	9	-.03	30	.48	.13	55
%RANK	35	20	40	30	40	60	85	90	90	35	50	30	30

**Due 4.25.17 to AUTO Real Deal 150B (HB/HP)**  
AUTO Cerise 621C, a direct daughter of COLE Zone and AUTO Zoe 219U, has exceptional variation from BW to YW both on paper and across the scales. She spans from -0.4 for BW to 102 for YW, her actual data reads with a ratio of 90 for BW and 108 for YW! We like numbers like that and it makes mating cattle very easy and enjoyable! She bends CW, REA and MB numbers in a positive fashion as well.

# 50 AUTO CHOPPER 613C

PERCENTAGE(81) COW • HOMO POLLED (T) • HOMO BLACK (T)  
3/29/2015 • AUTO 613C • NXF2088261

MAGS YIP <b>MAGS ARGO</b> MAGS UNSMUDGE	MAGS THE GENERAL AUTO CARMINDA 656S DCC RITO 619 OF 6002 3J24 MAGS SMIDGEN JLWM DIRE STRAYTS 4109P WULFS KYAH 0500K WULFS SHOP TALK 2332S MAGS RIVER WILD	BW: 62 ADJ WW: 464 ADJ YW: 794 ADJ FAT: 0.14 ADJ REA: 10.22 ADJ IMF: 3.9
WULFS UPGRADE 0500U <b>ENGD WATER PARK 1007Y</b> ENGD WATER PARK 905W		

	CED	BW	WW	YW	MA	CEM	SC	DOC	YG	CW	RE	MB	SMTI
EPDS	9	0.4	40	65	26	9	0.6	10	-.13	10	.02	-.05	41
%RANK	35	35	>95	95	45	15	65	90	65	95	>95	50	80

**Due 4.3.17 to AUTO Lode Up 137B (HB/HP)**  
MAGS Argo is the double homozygous MAGS Yip son Magness Land & Cattle retained in their own program and then later released semen on. He is one of the most attractive sires to hit the market in the past decade, we selected several stouter made cows to try him on, and WOW, were we impressed. When mated with ENGD Water Park, the Wulfs Upgrade female who goes back to MAGS Lady Ace, a great combination came about!

# 52 AUTO COTTER 615C

LIM-FLEX(50) COW • HET POLLED (T) • HET BLACK (T)  
4/2/2015 • AUTO 615C • LFF2088263

CONNEALY CONSENSUS 7229 <b>EXAR COUNSEL 1016B</b> EXAR EVAS 71561	CONNEALY CONSENSUS BLUE LILLY OF CONANGA 16 WULFS FANFARE 4055F MISS WULFETTE 1212L AUTO HACKETT 702H STBR DEMETRIA 669D	BW: 68 ADJ WW: 575 ADJ YW: 931 ADJ FAT: 0.30 ADJ REA: 11.16 ADJ IMF: 7.74
WULFS NASA 1212N <b>AUTO RESSA 819R</b> AUTO NESSA 461N		

	CED	BW	WW	YW	MA	CEM	SC	DOC	YG	CW	RE	MB	SMTI
EPDS	9	0.3	62	105	28	8	0.9	-	.15	34	.26	.92	81
%RANK	35	30	55	25	30	25	30	-	>95	25	85	1	1

**Due 4.2.17 to AUTO Power Plus 133B (HB/HP)**  
615C has had that brood cow luck since the day we preg checked, she bellied down early and impressed us with the female she has turned into the past few months. We knew all along she had the ability to be a great one, and she looks the part. These EXAR Counsel calves haven't let us down either, they are consistently good. One of the major advantages of using Counsel is the tremendous marbling traits he brings to the equation, in AUTO Cotter's case, she ranks in the top 1% for both MB and SMTI.



LOT 49 | AUTO CERISE 621C

# 51 AUTO CORALINE 616C

LIM-FLEX(75) COW • HET POLLED (T) • HET BLACK (T)  
4/6/2015 • AUTO 616C • LFF2088264

CONNEALY CONSENSUS 7229 <b>MAGS ACAPULCO</b> EXLR LUVLY 821M	CONNEALY CONSENSUS BLUE LILLY OF CONANGA 16 AUTO BLACK DAKOTA 129J EXLR LUVLY 084F JLWM DIRE STRAYTS 4109P WULFS KYAH 0500K AUTO BLACK DAKOTA 129J ELMW GINNIE P58G	BW: 66 ADJ WW: 567 ADJ YW: 881 ADJ FAT: 0.11 ADJ REA: 10.85 ADJ IMF: 4.74
WULFS UPGRADE 0500U <b>AUTO MEADOW 246Y</b> CARROUSELS PEACHES 4330P		

	CED	BW	WW	YW	MA	CEM	SC	DOC	YG	CW	RE	MB	SMTI
EPDS	5	1.3	56	83	25	9	0.8	14	-.16	21	.32	.12	53
%RANK	80	50	75	70	55	15	55	80	60	70	80	30	40

**Due 4.2.17 to AUTO Power Plus 133B (HB/HP)**  
From the same cow family as Carrousel Peaches and Carrousel Piña Colada, AUTO Coraline has pretty substantial shoes to fill, however we are confident she can do it! Thus far, she hasn't let us down in terms of phenotype and disposition; we have faith in her inherited mothering ability and proven pedigree. You see, not only does she go back maternally to ELMW Ginnie, she also goes back to EXLR Luvly 821M on her sire's side.



LOT 52 | AUTO COTTER 615C



**LOT 53 | AUTO CORALIE 265C**

## 53 AUTO CORALIE 265C ET

FULLBLOOD COW • HORNED • RED  
3/6/2015 • AUTO 265C • NFF2088607

WINTERSHALL JUPITER <b>HARVEST OLYMPUS</b> LABORIEUSE	FLEURI FAIENCE FLAMBEAU FABIOLA (INITIAL ENTRY)	BW: 70 ADJ WW: 505 ADJ YW: 823 ADJ FAT: 0.11 ADJ REA: 12.6 ADJ IMF: 3.25
PUNCH <b>STBR DEMETRIA 669D</b> STBR WENDY'S KIMMIE 194A	MIMOSA LEILA ORION DEUX AMIS KISSER	

	EPDS	CED	BW	WW	YW	MA	CEM	SC	DOC	YG	CW	RE	MB	SMTI
%RANK	>95	-2	5.0	50	75	32	4	0.3	-3	-.51	27	.84	-.43	34
		>95	>95	95	85	10	85	95	>95	1	45	5	>95	>95

### Due 4.2.17 to Royal Heritage (P/FB)

We encourage you to take a few moments to wrap you head around the cow power potential in AUTO Coralie 265C. She is direct daughter of one of the most influential females to ever be flushed at Pinegar, STBR Demetria 669D. 669D was flushed for the first time in 1998 and we still to this day are putting eggs in out of her. Her lean, muscular pattern, in addition to her milking ability, have earned her a permanent spot in our donor lineup. 265C is sired by the breed icon, Harvest Olympus.

## 54 AUTO CAMILLE 261C ET

FULLBLOOD COW • HORNED • RED  
3/2/2015 • AUTO 261C • NFF2088603

WINTERSHALL JUPITER <b>HARVEST OLYMPUS</b> LABORIEUSE	FLEURI FAIENCE FLAMBEAU FABIOLA (INITIAL ENTRY)	BW: 72 ADJ WW: 569 ADJ YW: 819 ADJ FAT: 0.12 ADJ REA: 12.13 ADJ IMF: 2.53
PUNCH <b>STBR DEMETRIA 669D</b> STBR WENDY'S KIMMIE 194A	MIMOSA LEILA ORION DEUX AMIS KISSER	

	EPDS	CED	BW	WW	YW	MA	CEM	SC	DOC	YG	CW	RE	MB	SMTI
%RANK	>95	-2	5.3	56	77	32	4	0.3	-3	-.48	27	.78	-.57	30
		>95	>95	75	85	10	85	95	>95	1	45	10	>95	>95

### Due 4.1.17 to Royal Heritage (P/FB)

A full sister to Lot 53, AUTO Camile 261C has an impressive historical fullblood pedigree that is still popular today. Staying true to the original purpose of the Fullblood Limousin cattle, 261C ranks in the very top 1% of the breed for YG and FT.



**STBR DEMETRIA 669D | Dam of Lot 54**

## 55 AUTO CORAL 638C

FULLBLOOD COW • HORNED • RED  
5/2/2015 • AUTO 638C • NFF2088274

GOLDVIEW KRUGERRAND <b>SOGF SPECIAL K 247B</b> SOGF LONESOME DOVE 832W	K & D BEAU FRANCO IGUANE SPECIAL EDITION SOGF UNCLOUDED 68U	BW: 70 ADJ WW: 596 ADJ YW: 827 ADJ FAT: 0.09 ADJ REA: 11.59 ADJ IMF: 3.66
ENGD UNBRIDLED 832U <b>AUTO TRUSTING 222Y</b> LAURA'S ACCENT	ENGD POLLED LIBERTY 283R LENAPE APHID HARVEST OLYMPUS TEKS STAR GOLLY	

	EPDS	CED	BW	WW	YW	MA	CEM	SC	DOC	YG	CW	RE	MB	SMTI
%RANK	>95	2	4.7	67	83	35	-3	0.2	5	-.40	25	.66	-.27	43
		>95	>95	35	70	3	>95	>95	>95	4	55	20	85	75

### Due 4.2.17 to AUTO Cliffhanger 194D (H/FB)

Sired by one of the most prominent and time-tested Fullblood sires in the breed, SOGF Special K 247 and a maternal granddaughter of the great Laura's Accent donor. These genetics are ultra predictable and were a sure thing from the time we opened the semen tank to mate her parents. AUTO Coral 638C is in the top 3% for MK and top 4% for TM on the maternal side of the equation, and terminally she is in the top 4% for YG and top 2% for FT.



**AUTO CLIFF HANGER 194D | Service Sire to Lot 55**





LOT 56 | AUTO LUCKIE LADY 280C

**56 AUTO LUCKIE LADY 280C ET**

LIM-FLEX(50) COW • HOMO POLLED (T) • HOMO BLACK (T)  
6/6/2015 • AUTO 280C • LFF2086854

S A V BRILLIANCE 8077  
**PVF INSIGHT 0129**  
PVF MISSIE 790

WLR DIRECT HIT  
**AUTO LUCKIE TOO 423Y**  
TYEJ DB SERENITY

S A V BISMARCK 5682  
S A V BLACKCAP MAY 5270  
P V F NEW HORIZON 001  
P V F MISS RAPTOR 024  
KRVN NASKAR 013N  
MAGS NIGHT AMBUSH  
LESF ASPHALT 9N  
TYEJ DB SIZZLE

BW: 68  
ADJ WW: 556  
ADJ YW: 827  
ADJ FAT: 0.25  
ADJ REA: 13.2  
ADJ IMF: 3.56

	CED	BW	WW	YW	MA	CEM	SC	DOC	YG	CW	RE	MB	SMTI
EPDS	10	1.7	65	105	30	4	1.1	14	-.31	35	.99	.14	58
%RANK	30	60	40	25	20	85	15	80	20	20	1	30	25

**Due 8.25.17 to AUTO Cruze 132X (HB/HP)**

Oh boy where do we start and where do we end when it comes to talking about the attributes of this female to the seedstock business. She is nothing but the best and one of the finest to ever grace the pastures at Pinegar. This 50% Lim-Flex heifer is moderate in her frame score and easy in her fleshing ability. We admire her from the ground up and the softness in her pasterns and fluidity in her movement. For a shorter bred female to possess this much rib shape and volume is unheard of at her stage of life. She is sired by the big-numbered purebred Angus sire PVF Insight 0129 and from the many-time



AUTO LUCKIE TOO 423Y | Dam of Lot 56

champion and now leading donor AUTO Luckie Too 423Y. AUTO Luckie Lady 280C ranks in the top 1% for REA with a .99. She also scanned a 15.02 for REA and 4.01 for IMF. The results of her mating to the purebred AUTO Cruze 132X will result in nothing short of perfection.

**Consigned by: CODY HEAVIN**



LOT 57 | AUTO CARMEL 445C

## 57 AUTO CARMEL 445C ET

LIM-FLEX(50) COW • POLLED • HOMO BLACK (T)  
9/15/2015 • AUTO 445C • LFF2101320

DAMERON FIRST CLASS  
**EXAR CLASSEN 1422B**  
EXAR PRINCESS 2006

DHVO DEUCE 132R  
**AUTO FOREVER 219X**  
MAGS MANUELA

EXG RS FIRST RATE S903 R3  
DAMERON NORTHERN MISS 311  
EXAR LUTTON 1831  
GREENS PRINCESS 1012  
GPPF BLAQUE RULON  
AMY JO DHAN 20L  
EXLR LIMITED EDITION 765J  
AUTO CITY NIGHTS 214H

BW: 68  
ADJ WW: 730  
ADJ YW: 1,006  
ADJ FAT: 0.39  
ADJ REA: 11.65  
ADJ IMF: 4.09

	CED	BW	WW	YW	MA	CEM	SC	DOC	YG	CW	RE	MB	SMTI
EPDS	6	2.4	78	113	23	6	0.8	-	.03	36	.65	.29	64
%RANK	70	75	10	15	75	60	40	-	95	20	20	15	10

### Due 8.27.17 to AUTO Sure Deal 149B (HB/HP)

AUTO Carmel 445C is a 50% polled, homozygous black bred female who is sure to impress the many that will be available sale day. She will be highlighted under the notorious yellow tent where she will have several admirers. She is a daughter of EXAR Classen 1422B and from the leading Pinegar donor AUTO Forever 219X, the proven daughter of DHVO Deuce from MAGS Manuela. Her future calf sired



AUTO FOREVER 219X | Dam of Lot 57

by AUTO Sure Deal 149B will result in an exciting calf. He was a top-selling bull in the 2016 Pinegar sale and is a purebred son of AUTO Cruze from AUTO Luckie Too.



LOT 58 | AUTO CYDNEY 287C



LOT 59 | AUTO CHAPERALL 406C

**58 AUTO CYDNEY 287C ET**

LIM-FLEX(50) COW • POLLED • HET BLACK (T)  
9/2/2015 • AUTO 287C • LFF2101288

S A V BRILLIANCE 8077  
**PVF INSIGHT 0129**  
PVF MISSIE 790

DHVO DEUCE 132R  
**AUTO FOREVER 219X**  
MAGS MANUELA

S A V BISMARCK 5682  
S A V BLACKCAP MAY 5270  
P V F NEW HORIZON 001  
P V F MISS RAPTOR 024  
GPFF BLAQUE RULON  
AMY JO DHAN 20L  
EXLR LIMITED EDITION 765J  
AUTO CITY NIGHTS 214H

BW: 64  
ADJ WW: 785  
ADJ YW: 1,145  
ADJ FAT: 0.44  
ADJ REA: 13.82  
ADJ IMF: 4.3

	EPDS	CED	BW	WW	YW	MA	CEM	SC	DOC	YG	CW	RE	MB	SMTI
%RANK	20	11	1.4	77	126	28	6	1.1	21	-.17	42	1.27	.36	68
		20	55	10	3	30	60	25	50	55	10	1	10	5

Due 9.30.17 to AUTO First Class 116A (HB/P)

There are several heifers in this age group we are upset didn't get halters put on them and marketed as show heifers last spring, we are that excited about them! They are exceptionally consistent in terms of quality and appeal. This heifer in particular is rugged and has a ton of muscle in her and is just so stout from end to end. Being and Insight, there is no surprise to us that this one turned out so cool. PVF Insight is the rare combination bull in the Angus population who has great numbers and has been siring banner winners year in and year out! 287C ranks in the top 1% for REA, top 3% for YW, top 5% for SMTI and top 10% for TM and MB. Superbly solid in all aspects.

**59 AUTO CHAPERALL 406C ET**

LIM-FLEX(37) COW • HOMO POLLED (P1) • DOUBLE BLACK  
9/30/2015 • AUTO 406C • LFF2094621

S A V BISMARCK 5682  
**S A V BRAND NAME 9115**  
S A V BLACKCAP MAY 5530

LESF ASPHALT 9N  
**AUTO REBECA 292S**  
EXLR REBECA 1019P

G A R GRID MAKER  
S A V ABIGALE 0451  
B C C BUSHWACKER 41-93  
S A V MAY 7238  
GPFF BLAQUE RULON  
GPFF EXTRA SWEET ELITE  
BR MIDLAND  
EXLR REBECA 614H

BW: 63  
ADJ WW: 698  
ADJ YW: 1,103  
ADJ FAT: 0.33  
ADJ REA: 13.05  
ADJ IMF: 4.56

	EPDS	CED	BW	WW	YW	MA	CEM	SC	DOC	YG	CW	RE	MB	SMTI
%RANK	80	5	0.1	78	131	24	3	1.2	5	-.15	44	.74	.35	68
		80	30	10	2	65	90	15	>95	60	5	15	15	5

Due 8.27.17 to AUTO Power Plus 133B (HB/HP)

Here is a dynamic sale feature! AUTO Chaperall 406C is a direct daughter of AUTO Rebecca 292S and SAV Brand Name. SAV Brand Name 9115 has been used heavily in our program for several years now on a variety of donors with consistent success. Brand Name was the \$150,000+ top-selling bull at Schaffs Angus Valley and is known the world over for his flexible EPD profile and how well he is working not just in the Angus breed, but in the hybrid populations such as the Lim-Flex program. Each and every year the 292S offspring top sales and make their way to backdrops across the countryside 4406C has a highly marketable performance profile with a 78 WW and 131 YW, which respectively ranks her in the top 10% for WW and top 2% for YW.



LOT 60 | AUTO CHAY 483C



LOT 61 | AUTO CAMBER 451C

## 60 AUTO CHAY 483C ET

PERCENTAGE(81) COW • HOMO POLLED (T) • HOMO BLACK (T)  
12/3/2015 • AUTO 483C • NXF2094318

LH WAR HERO 195W	JCL LODESTAR 27L	BW:	67
<b>MAGS ANCHOR</b>	VERMILION ERICA LADY 1229	ADJ WW:	583
MGS XIPHOPAGOUS	DHVO DEUCE 132R	ADJ YW:	935
	MAGS SALINA	ADJ FAT:	0.21
LVLS FARMER JOHN 7428P	LVLS FARMER JACK 5842M	ADJ REA:	12.56
<b>LVLS 9066U</b>	LVLS7428L	ADJ IMF:	3.49
LVLS9066R	COLE WULF HUNT		
	LVLS9066N		

	CED	BW	WW	YW	MA	CEM	SC	DOC	YG	CW	RE	MB	SMTI
EPDS	7	1.4	73	104	25	7	1.2	15	-.07	34	.13	.08	56
%RANK	60	55	15	25	55	40	10	75	80	25	95	35	30

Due 8.31.17 to MAGS All-Star (HB/HP)

Created in the Hager Cattle Co. program, comes the elite opportunity to invest in the service of the popular \$48,000-syndicated MAGS Anchor, the lead bull in the 2014 National Western Champion Carload. The elite donor, LVLS 9066U, is a can't-miss female who is big-footed, relaxed in her pasterns, deep, level in her design and boasts a perfectly constructed udder. This elite, high-percentage, double homozygous mating promises to produce phenotypically exceptional calves that rank among the breed's top 15% for WW.

## 61 AUTO CAMBER 451C ET

LIM-FLEX(50) COW • POLLED • HET BLACK (T)  
10/25/2015 • AUTO 451C • LFF2093223

BSAR OPPORTUNITY 9114	BSAR DESIGN DOCTOR 0910	BW:	68
<b>BSF OPPORTUNIST Z5</b>	BISHOPS LASSIE 746	ADJ WW:	767
BSF PRINCESS EL CAP W2	SILVEIRAS EL CAPITAN 6510	ADJ YW:	989
	B S F PRINCESS TCF N2	ADJ FAT:	0.27
EXLR LIMITED EDITION 765J	EXLR POLLED BENCHMARK709G	ADJ REA:	14.66
<b>MAGS MANUELA</b>	WULFS GLENDA 7021G	ADJ IMF:	4.12
AUTO CITY NIGHTS 214H	COLE FIRST DOWN 46D		
	MISS WOLFETTE 9049X		

	CED	BW	WW	YW	MA	CEM	SC	DOC	YG	CW	RE	MB	SMTI
EPDS	9	2.3	66	98	23	7	0.8	-	-.23	31	.4	.41	67
%RANK	35	75	35	40	75	40	55	-	40	30	65	10	10

Due 8.25.17 to AUTO Real Deal 150B (HB/HP)

We take great pride in providing opportunities for everyone in our sale, we offer elite show heifers, tremendous replacement females and market-demanded bulls. We are proud to off this BSK Opportunist Z5 daughter of out MAGS Manuela. Opportunist is the two-time reserve champion Angus bull at the National Western Stock show who offers performance AND phenotype. AUTO Camber round out her performance profile with top 10% rankings for MB, FT and SMTI.



LOT 62 | AUTO CAMBRIDGE 298C



LOT 63 | AUTO CECE 482C

## 62 AUTO CAMBRIDGE 298C ET

PERCENTAGE(76) COW • HOMO POLLED (T) • BLACK  
10/2/2015 • AUTO 298C • NXF2093248

MAGS THE GENERAL  
**AUTO CRUZE 132X**  
AUTO REBECA 292S

LH U HAUL 135U  
**AUTO BETTE 266Y**  
WLR UGLY BETTY 432U

AUTO DOLLAR GENERAL 122R  
EXLR LUVLY 821M  
LESF ASPHALT 9N  
EXLR REBECA 1019P  
BASIN FRANCHISE P142  
EXLR DUCHESS 7129R  
MAGS SHYLLO  
JCL HEIDI 2S

BW: 62  
ADJ WW: 522  
ADJ YW: 979  
ADJ FAT: 0.29  
ADJ REA: 12.55  
ADJ IMF: 3.97

	CED	BW	WW	YW	MA	CEM	SC	DOC	YG	CW	RE	MB	SMTI
EPDS	10	-0.3	63	113	29	9	0.3	14	-.05	37	.24	.14	55
%RANK	30	20	50	15	25	15	90	80	85	15	90	30	30

Due 8.31.17 to EF Excessive Force (HB/HetP)

AUTO Cambridge stems from the same prestigious cow families that produced Adam Griffith's National Junior Show Champion, AUTO Bette and her \$30,000 flushmate, AUTO Bliss and AUTO Rebeca 292S. 286B's dam, AUTO Bette has in fact been described as an absolutely rock star of the show ring due to her overpowering mass and substance, she has substantial foot size and bone work, a ton of volume yet still held herself together elegantly though her one-third, just like her daughter. She is totally capable of producing superb show cattle and replacements alike. 298C ranks in the top half of the breed for each of the growth and maternal traits and post a YW ratio of 112.

## 63 AUTO CECE 482C ET

PUREBRED COW • HOMO POLLED (T) • HOMO BLACK (T)  
12/9/2015 • AUTO 482C • NPF2094317

MAGS THE GENERAL  
**AUTO CRUZE 132X**  
AUTO REBECA 292S

GPFF BLAQUE RULON  
**AUTO GEMINI 248T**  
MAGS MANUELA

AUTO DOLLAR GENERAL 122R  
EXLR LUVLY 821M  
LESF ASPHALT 9N  
EXLR REBECA 1019P  
BLACK DIAMOND  
QUAIL RUN RAMONA BP  
EXLR LIMITED EDITION 765J  
AUTO CITY NIGHTS 214H

BW: 69  
ADJ WW: 585  
ADJ YW: 917  
ADJ FAT: 0.26  
ADJ REA: 13.6  
ADJ IMF: 2.34

	CED	BW	WW	YW	MA	CEM	SC	DOC	YG	CW	RE	MB	SMTI
EPDS	8	1.4	74	108	25	8	0.3	16	-.12	36	.33	-.32	42
%RANK	45	55	15	20	55	25	90	70	70	20	75	95	80

Due 9.16.17 to AUTO First Class 116A (HB/P)

AUTO Gemini is a purebred female who, for lack of better words, we have had ifunî mating her to some of the top show bulls in the Angus breed over the years, but never have we had the results we have went we went back on her with a purebred sire. This is one is big-time good. If she doesn't catch your eye when you open up the catalog, than we need to re-evaluate our program, because she stands for everything we believe in. She is smooth shouldered, high necked, great topped, amazing hiped and balances as well as an female in the sale. And to top it off, she has a low BW and 108 YW!



LOT 64 | AUTO CAMDYN 474C



LOT 65 | AUTO CONCEAL 285C

## 64 AUTO CAMDYN 474C ET

LIM-FLEX(37) COW • HOMO POLLED (T) • HOMO BLACK (T)  
12/2/2015 • AUTO 474C • LFF2094316

WERNER WAR PARTY 2417  
**R B TOUR OF DUTY 177**  
B A LADY 6807 305

LESF ASPHALT 9N  
**AUTO REBECA 292S**  
EXLR REBECA 1019P

CONNELLY ONWARD  
BAAR USA LADY JAYE 489  
VERMILION DATALINE 7078  
G D LADY HI FLYER 302  
GPFF BLAUQUE RULON  
GPFF EXTRA SWEET ELITE  
BR MIDLAND  
EXLR REBECA 614H

BW: 71  
ADJ WW: 586  
ADJ YW: -  
ADJ FAT: 0.43  
ADJ REA: 14.26  
ADJ IMF: 4.34

	CED	BW	WW	YW	MA	CEM	SC	DOC	YG	CW	RE	MB	SMTI
EPDS	13	0.3	78	128	39	9	0.8	8	-.16	46	.66	.26	65
%RANK	10	30	10	2	1	15	40	95	60	4	20	20	10

Due 9.21.17 to AUTO First Class 116A (HB/P)

When we decided to reach out and utilize RB Tour of Duty in our ET program, we were advised that his number may swing a little bit, but the cattle would be good enough to overcome it. That for certain is exactly what happened. Tour of Duty is the son of a particularly exceptional 6807 female that has produced him as well as a \$175,000 maternal sister that sold to Herbster Angus in Nebraska. The show-ring appeal and quality look came through from 292S in the case of this unique female. AUTO Camdyn 474C is exceptional in terms of data, she is trait leader for MK and TM, in the top 2% for YW and the top 10% for CED, WW and SMTI.

## 65 AUTO CONCEAL 285C ET

LIM-FLEX(43) COW • HOMO POLLED (P3) • HOMO BLACK (P3)  
9/10/2015 • AUTO 285C • LFF2094620

MAGS YIP  
**AUTO AMMO 135A**  
AUTO REBECA 292S

CONNELLY CONSENSUS 7229  
**EXAR BLACKBIRD 2830**  
MGR BLACKBIRD 8055

MAGS THE GENERAL  
AUTO CARMINDA 656S  
LESF ASPHALT 9N  
EXLR REBECA 1019P  
CONNELLY CONSENSUS  
BLUE LILLY OF CONANGA 16  
G A R PREDESTINED  
EXAR BLACKBIRD 500S

BW: 66  
ADJ WW: 533  
ADJ YW: 1,020  
ADJ FAT: 0.28  
ADJ REA: 11.52  
ADJ IMF: 3.92

	CED	BW	WW	YW	MA	CEM	SC	DOC	YG	CW	RE	MB	SMTI
EPDS	10	0.2	58	111	26	6	0.8	11	.08	36	.15	.35	60
%RANK	30	30	70	15	45	60	40	90	>95	20	95	15	20

Due 9.30.11 to AUTO First Class 116A (HB/HetP)

The prestigious dam of AUTO Conceal 285C is EXAR Blackbird 2830, the leading Angus donor at Stowers Limousin. Sugar Bush Cattle of Michigan purchased half interest at \$12,5000 in the Texas Tradition I Sale. She is a leading daughter of Connealy Consensus 7229 and from a daughter of GAR Predestined back to a daughter of Rito of 2536. 285C is sired by a really neat MAGS Yip out of 292S son we plan on using quite heavily. This is one we debated on parting with, however there are several very good ones as result of this flush to choose from, so we decided to offer her for public appraisal.



LOT 66 | AUTO CALLEN 283C



LOT 67 | AUTO CHELLY 653C

## 66 AUTO CALLEN 283C ET

LIM-FLEX(68) COW • HOMO POLLED (T) • HOMO BLACK (T)  
9/2/2015 • AUTO 283C • LFF2092853

LH WAR HERO 195W  
**MAGS ANCHOR**  
MGS XIPHOPAGOUS

LESF ASPHALT 9N  
**AUTO REBECA 292S**  
EXLR REBECA 1019P

JCL LODESTAR 27L  
VERMILION ERICA LADY 1229  
DHVO DEUCE 132R  
MAGS SALINA  
GPFF BLAQUE RULON  
GPFF EXTRA SWEET ELITE  
BR MIDLAND  
EXLR REBECA 614H

BW: 65  
ADJ WW: 835  
ADJ YW: 992  
ADJ FAT: 0.20  
ADJ REA: 8.88  
ADJ IMF: 3.9

	CED	BW	WW	YW	MA	CEM	SC	DOC	YG	CW	RE	MB	SMTI
EPDS	8	0.8	85	119	25	6	0.9	6	.06	43	.02	.08	58
%RANK	45	40	2	10	55	60	30	95	>95	10	>95	35	25

Due 9.7.17 to EF Excessive Force (HB/HetP)

MAGS Anchor is the \$48,000 syndicated sire of many of the great ones to walk through a sale ring the past few years, including AUTO Callen 283C. This pedigree excites many visitors here to the farm who are looking for pedigree power on both the sire and dam side. AUTO Rebeca 292S is a legend in the Limousin breed and needs no introduction. This is your opportunity to own a direct daughter of 292S who ranks in the top 2% for WW and top 10% for YW and TM traits. 283C is homozygous polled, homozygous black and ratioed 110 at weaning.

## 67 AUTO CHELLY 653C

LIM-FLEX(62) COW • HOMO POLLED (T) • HOMO BLACK (T)  
11/1/2015 • AUTO 653C • LFF2094319

MAGS UR A ROBIN  
**MAGS ROBIN HOOD 276Y**  
MAGS UNDERFOOT

AHCC WESTWIND W544  
**PBRs YO MOMMA 401Y**  
LOUP RIVER BLACKCAP 23P9

LH RODMASTER 338R  
BOHI RED ROBIN 282R  
EXLR EXCELLANTE 251L  
AUTO KYRIA 232K  
KAJO RESPONDER 120R  
AHCC MISS WULF HUNT R544  
SUMMITCRESTHIGHPRIME 0H29  
LOUP RIVER BLACKCAP 23L5

BW: 65  
ADJ WW: 603  
ADJ YW: 899  
ADJ FAT: 0.34  
ADJ REA: 13.53  
ADJ IMF: 3.96

	CED	BW	WW	YW	MA	CEM	SC	DOC	YG	CW	RE	MB	SMTI
EPDS	6	2.2	72	111	31	5	0.7	10	-.02	39	.29	.25	61
%RANK	70	75	20	15	15	75	65	90	90	15	80	20	15

Due 9.7.17 to AUTO Cruze 132X (HB/HP)

Other than getting the award for having the dam with the coolest name (Yo Momma), AUTO Chelly 653C will be making her own name in your program, we guarantee it! On her dam's side alone without any creep, AUTO Chelly ratioed 108 for WW. MAGS Robin Hood's maternal traits are so strong he skews the percentile rankings in 653C's pedigree, resulting in a rank in the top 10% for TM and top 15% for MK and YW. There are some neat, neat cattle in Chelly's lineage, including BOHI Red Robin, AHCC Westwind, Summitcrest High Prime and JCL Lodestar to name just a few.



LOT 68 | AUTO DAISY 208D

## 68 AUTO DAISY 208D ET

LIM-FLEX(37) COW • HOMO POLLED (T) • HOMO BLACK (T)  
1/3/2016 • AUTO 208D • LFF2101280

DAMERON FIRST CLASS  
**EXAR BLUE CHIP 1877B**  
GREENS PRINCESS 1012

LESF ASPHALT 9N  
**AUTO REBECA 292S**  
EXLR REBECA 1019P

EXG RS FIRST RATE S903 R3  
DAMERON NORTHERN MISS 311  
GREENS PREMIUM 7578  
GREENS PRINCESS 7418  
GPFF BLAQUE RULON  
GPFF EXTRA SWEET ELITE  
BR MIDLAND  
EXLR REBECA 614H

BW: 68  
ADJ WW: 688  
ADJ YW: 1,123  
ADJ FAT: 0.32  
ADJ REA: 14.90  
ADJ IMF: 3.78

	CED	BW	WW	YW	MA	CEM	SC	DOC	YG	CW	RE	MB	SMTI
EPDS	9	1.1	69	113	27	7	0.6	-	.09	38	.11	.2	58
%RANK	35	50	25	15	40	40	65	-	>95	15	>95	25	25

This 37% Lim-Flex heifer is more than homozygous polled and homozygous black. She is bred to be a future donor for any progressive program. She is a daughter of EXAR Blue Chip 1877B, the ever-popular and proven son of Dameron First Class. Her dam is the famed and proven Pinegar donor, AUTO Rebeca 292S. This young heifer is near perfect in her design and coupled with her predictable pedigree makes for a sure investment for any program.



AUTO REBECA 292S | Dam of Lot 68





**LOT 69 | AUTO DANA 265D**

**69 AUTO DANA 265D ET**

LIM-FLEX(54) COW • HOMO POLLED (T) • HOMO BLACK (T)  
4/1/2016 • AUTO 265D • LFF2108356

MAGS WINSTON	BT CROSSOVER 758N	BW: 72
<b>MAGS AVIATOR</b>	MAGS STRAWBERRY	ADJ WW: 678
MAGS XTRA REST	DHVO DEUCE 132R	ADJ YW: 1,072
	MAGS UNREST	ADJ FAT: 0.37
S A V BRAVE 8320	S A V MANDAN 5664	ADJ REA: 13.98
<b>AUTO AJAY 206A</b>	S A V MAY 2397	ADJ IMF: 4.84
MAGS MANUELA	EXLR LIMITED EDITION 765J	
	AUTO CITY NIGHTS 214H	

	CED	BW	WW	YW	MA	CEM	SC	DOC	YG	CW	RE	MB	SMTI
EPDS	9	2.1	62	95	25	7	0.9	24	.06	29	.38	.48	66
%RANK	35	70	55	45	55	40	40	35	>95	40	70	5	10

This 54% Lim-Flex is a proven show champion as she was named reserve division at the recent Denver National Limousin Show. She is a daughter of MAGS Aviator, the exciting son of MAGS Winston. Her dam is P Bar S Ranch owned donor and prolific producer, AUTO Ajay 206A. She is a daughter of SAV Brave and from the famed MAGS Manuela. This show heifer and future donor has a proven pedigree, but just as importantly, she is made darn near perfect in her conformation. We



**AUTO AJAY 206A | Dam of Lot 69**

love her from the ground up and are in awe of her depth and capacity for a heifer of this age.

# OPEN HEIFERS



LOT 70 | AUTO DAKIN 255D

## 70 AUTO DAKIN 255D ET

PERCENTAGE(85) COW • HET POLLED (T) • HET BLACK (T)  
5/2/2016 • AUTO 255D • NXF2110682

LH U HAUL 135U <b>AUTO LUCKY STRIKE 118B</b> AUTO LUCKIE 246W	BASIN FRANCHISE P142 EXLR DUCHESS 7129R WLR DIRECT HIT TYEJ DB SERENITY	BW: 70 ADJ WW: 663 ADJ YW: - ADJ FAT: - ADJ REA: - ADJ IMF: -
LVLS SECRET WEAPON 4408K <b>AUTO ANGEL 236U</b> AUTO KYRIA 232K	LVLS FARMER 4G LVLS 408H AUTO HACKETT 702H WULFS HAPPINESS 8136H	

	CED	BW	WW	YW	MA	CEM	SC	DOC	YG	CW	RE	MB	SMTI
EPDS	7	2.8	69	103	33	5	0.8	17	-.09	35	.23	.13	56
%RANK	60	85	25	30	10	75	40	65	75	20	90	30	25

This black, polled 85% Limousin heifer is sired by the once All-American Futurity Champion Bull AUTO Lucky Strike 118B. He is the leading sire for P Bar S Ranch where they are experiencing his positive influence in their program. He is the big-numbered son of LH U Haul from the past All-American Futurity champion AUTO Luckie 246W. These two champions have been blended together to create what



**AUTO LUCKY STRIKE 118B** | Sire of Lot 70

we think is fine specimen. Her dam is a full sibling to AUTO Dollar General, the high performance, easy-calving, high marbling sire.



LOT 71 | AUTO DYNA 254D



LOT 72 | AUTO DEXTER 632D

## 71 AUTO DYNA 254D ET

PUREBRED COW • HET POLLED (T) • HOMO BLACK (T)  
4/10/2016 • AUTO 254D • NPF2110681

MAGS THE GENERAL  
**AUTO CRUZE 132X**  
AUTO REBECA 292S

WLR DIRECT HIT  
**AUTO LUCKIE TOO 423Y**  
TYEJ DB SERENITY

AUTO DOLLAR GENERAL 122R  
EXLR LUVLY 821M  
LESF ASPHALT 9N  
EXLR REBECA 1019P  
KRVN NASKAR 013N  
MAGS NIGHT AMBUSH  
LESF ASPHALT 9N  
TYEJ DB SIZZLE

BW: 70  
ADJ WW: 583  
ADJ YW: 1,026  
ADJ FAT: 0.23  
ADJ REA: 14.04  
ADJ IMF: 3.99

	CED	BW	WW	YW	MA	CEM	SC	DOC	YG	CW	RE	MB	SMTI
EPDS	7	1.4	69	100	28	5	0.6	13	-.13	31	.29	-.13	47
%RANK	60	55	25	35	30	75	75	80	65	30	80	60	60

Here is a full sibling to Lots 5 and. She is also a full sibling to the 2016 Pinegar top sellers AUTO Sure Deal and AUTO Real Deal, who are service sires for several females in this sale. This mating is proven, predictable and certainly right for the times. She is a polled, homozygous black purebred heifer who meets all the demands for a majority of the lovers of Limousin cattle.

## 72 AUTO DEXTER 632D

LIM-FLEX(68) COW • HET POLLED (T) • HOMO BLACK (T)  
3/2/2016 • AUTO 632D • LFF2110686

MAGS THE GENERAL  
**AUTO CRUZE 132X**  
AUTO REBECA 292S

S A V BRAVE 8320  
**AUTO APRIL 202A**  
MAGS MANUELA

AUTO DOLLAR GENERAL 122R  
EXLR LUVLY 821M  
LESF ASPHALT 9N  
EXLR REBECA 1019P  
S A V MANDAN 5664  
S A V MAY 2397  
EXLR LIMITED EDITION 765J  
AUTO CITY NIGHTS 214H

BW: 66  
ADJ WW: 574  
ADJ YW: 996  
ADJ FAT: 0.40  
ADJ REA: 13.12  
ADJ IMF: 4.53

	CED	BW	WW	YW	MA	CEM	SC	DOC	YG	CW	RE	MB	SMTI
EPDS	7	1.1	71	109	29	8	0.7	18	-.05	36	.38	.20	59
%RANK	60	50	20	20	25	25	65	65	85	20	70	25	20

AUTO Dexter 632D is the result of exactly what Ed Pinegar set out to accomplish 26 years ago when he started his Limousin herd. She is near perfection and represents a proven and accomplished mating that you the buyer can invest in. She is a daughter of the high percentage Limousin sire of excellence AUTO Cruze 132X. The demand for his influence is off the charts and very sought after in the business. He is the purebred bull who combines strength in numbers with a predictable pedigree. Her dam is a daughter of SAV Brave and from the now deceased MAGS Manuela.

# OPEN HEIFERS



LOT 73 | AUTO DOT 227D



LOT 74 | AUTO DIXON 257D

## 73 AUTO DOT 227D ET

LIM-FLEX(50) COW • POLLED • HET BLACK (T)  
3/25/2016 • AUTO 227D • LFF2110687

BSAR OPPORTUNITY 9114  
**BSF OPPORTUNIST Z5**  
BSF PRINCESS EL CAP W2

EXLR LIMITED EDITION 765J  
**MAGS MANUELA**  
AUTO CITY NIGHTS 214H

BSAR DESIGN DOCTOR 0910  
BISHOPS LASSIE 746  
SILVEIRAS EL CAPITAN 6150  
B S F PRINCESS TCF N2  
EXLR POLLED BENCHMARK709G  
WULFS GLENDA 7021G  
COLE FIRST DOWN 46D  
MISS WOLFETTE 9049X

BW: 64  
ADJ WW: 558  
ADJ YW: 976  
ADJ FAT: 0.36  
ADJ REA: 15.04  
ADJ IMF: 4.53

	CED	BW	WW	YW	MA	CEM	SC	DOC	YG	CW	RE	MB	SMTI
EPDS	9	1.7	63	96	23	7	0.8	-	-.18	31	.29	.44	67
%RANK	35	60	50	40	75	40	55	-	55	30	80	10	10

This polled, black 50% Lim-Flex heifer is sired by the proven Angus sire, BSF Opportunist Z5, and from the top money earning proven donor MAGS Manuela. This mating is perfect as it is the result of the blending of proven Angus with purebred Limousin genetics. This heifer is clean and extended up through her front end, sound in her movement and has the perfect amount of rib versus natural thickness. She ranks in the top 10% for MB with a .44 and SMTI with a 67.

## 74 AUTO DIXON 257D ET

LIM-FLEX(50) COW • HET POLLED (T) • HOMO BLACK (T)  
5/3/2016 • AUTO 257D • LFF2110400

DAMERON FIRST CLASS  
**EXAR BLUE CHIP 1877B**  
GREENS PRINCESS 1012

GPFF BLAQUE RULON  
**AUTO GEMINI 248T**  
MAGS MANUELA

EXG RS FIRST RATE S903 R3  
DAMERON NORTHERN MISS 311  
GREENS PREMIUM 7578  
GREENS PRINCESS 7418  
BLACK DIAMOND  
QUAIL RUN RAMONA BP  
EXLR LIMITED EDITION 765J  
AUTO CITY NIGHTS 214H

BW: 74  
ADJ WW: 593  
ADJ YW: -  
ADJ FAT: -  
ADJ REA: -  
ADJ IMF: -

	CED	BW	WW	YW	MA	CEM	SC	DOC	YG	CW	RE	MB	SMTI
EPDS	8	3.0	67	100	20	7	0.6	-	.02	33	.26	.09	53
%RANK	45	85	35	35	95	40	65	-	95	25	85	35	35

Please don't try and tell us that you can't appreciate this one! She is one of the many reasons why Lim-Flex show heifers are some of the most sought-after genetics in the business now. She is so clean and extended up through her head and neck and has the straight line blending into a perfect hip and hind leg. This heifer has it all. She is a daughter of the purebred Angus sire EXAR Blue Chip 1877B and from the GPFF Blaque Rulon x MAGS Manuela daughter, AUTO Gemini 248T.



**LOT 75 | AUTO DALLY 238D**



**LOT 76 | AUTO DENI 212D**

## 75 AUTO DALLY 238D ET

LIM-FLEX(43) COW • HOMO POLLED (T) • HOMO BLACK (T)  
3/27/2016 • AUTO 238D • LFF2108304

PLAINVIEW LUTTON E102  
**S&R ROUNDTABLE J328**  
PVF PROVEN QUEEN 786

MAGS XYLOPOLIST  
**AUTO REBECA 479A**  
AUTO REBECA 292S

EXAR LUTTON 1831  
PLAINVIEW PRIDE C123  
BR MIDLAND  
PVF PROVEN QUEEN 419  
DHVO DEUCE 132R  
MAGS STRAWBERRY  
LESF ASPHALT 9N  
EXLR REBECA 1019P

BW: 63  
ADJ WW: 665  
ADJ YW: 1,027  
ADJ FAT: 0.49  
ADJ REA: 15.62  
ADJ IMF: 4.80

	CED	BW	WW	YW	MA	CEM	SC	DOC	YG	CW	RE	MB	SMTI
EPDS	8	0.6	62	99	27	7	-	-	-.13	31	.32	.26	59
%RANK	45	35	55	35	40	40	-	-	65	30	80	20	20

The female is the result of 26 years of the Pinegar program devoted their resources, time and energy into creating only the most predictable genetics for their customers. This mating has certainly met those requirements and we hope you will agree. She is a daughter of the Angus sire S&R Roundtable J238, and from a daughter of MAGS Xylopolist from the matriarch donor for Pinegar, AUTO Rebeca 292S.

## 76 AUTO DENI 212D ET

LIM-FLEX(50) COW • HOMO POLLED (T) • HOMO BLACK (T)  
1/4/2016 • AUTO 212D • LFF2101283

DAMERON FIRST CLASS  
**EXAR BLUE CHIP 1877B**  
GREENS PRINCESS 1012

GPFF BLAQUE RULON  
**AUTO GEMINI 248T**  
MAGS MANUELA

EXG RS FIRST RATE S903 R3  
DAMERON NORTHERN MISS 311  
GREENS PREMIUM 7578  
GREENS PRINCESS 7418  
BLACK DIAMOND  
QUAIL RUN RAMONA BP  
EXLR LIMITED EDITION 765J  
AUTO CITY NIGHTS 214H

BW: 68  
ADJ WW: 647  
ADJ YW: 1,094  
ADJ FAT: 0.32  
ADJ REA: 13.85  
ADJ IMF: 4.39

	CED	BW	WW	YW	MA	CEM	SC	DOC	YG	CW	RE	MB	SMTI
EPDS	8	2.6	65	100	20	7	0.6	-	.02	33	.26	.09	53
%RANK	45	80	40	35	95	40	65	-	95	25	85	35	35

Some would say we are saving the best for last and we are curious to see if you agree. She is a daughter a maternal sibling to Lot 74. This daughter of AUTO Gemini 248T is the result of blending 248T with the Angus sire EXAR Blue Chip 1877B. This mating has certainly worked, as you will find sale day a heifer who will take your breath away. She is so clean and extended up through her head and neck and has the poised and prominent look to her at all times. Her depth of flank, rib shape and overall capacity is so appealing and we cant wait to highlight her for you as we celebrate 26 years of Ed Pinegar, Ty Heavin and the entire crew on a job well done with a superb offering.

# REFERENCE SIRES



**AUTO LODE UP 137B ET**



**AUTO POWER PLUS 133B ET**



**AUTO CLIFF HANGER 194D**



**AUTO CRUZE 132X**



**AUTO SILVERADO 5438**



**AUTO REAL DEAL 150B**



**AUTO SURE DEAL 149B**



## AUTO LODE UP 137B ET

LIM-FLEX(50) BULL • HOMO POLLED (P2) • HOMO BLACK (T) • LFM2074249  
OWNED BY: SUMMERS LIMOUSIN, MO

**EXAR DENVER 2002B x AUTO EXCEPTIONAL 282S**

	CED	BW	WW	YW	MA	CEM	SC	DOC	YG	CW	RE	MB	SMTI
EPDS	13	0.3	67	117	37	8	0.9	18	.13	36	.63	.66	74
%RANK	10	30	35	10	1	25	30	65	>95	20	25	2	2



## AUTO POWER PLUS 133B ET

LIM-FLEX(50) BULL • HOMO POLLED (T) • HOMO BLACK (T) • LFM2074245  
OWNED BY: STOWERS LIMOUSIN, TX

**EXAR DENVER 2002B x EF YADDA YADDA 809Y**

	CED	BW	WW	YW	MA	CEM	SC	DOC	YG	CW	RE	MB	SMTI
EPDS	12	1.9	66	111	33	7	1.5	18	-.13	38	.86	.51	70
%RANK	15	65	35	15	10	40	2	65	65	15	4	4	4



## AUTO CLIFF HANGER 194D

FULLBLOOD BULL • HORNED • RED • NFM1162529  
OWNED BY: PINEGAR LIMOUSIN

**TEXS RANGER PRIMO x YKCC HEART THROB 141W**

	CED	BW	WW	YW	MA	CEM	SC	DOC	YG	CW	RE	MB	SMTI
EPDS	4	1.5	56	89	25	5	0.1	1	-.33	26	.61	-.17	44
%RANK	80	55	70	55	55	65	90	95	20	50	30	65	65



## AUTO CRUZE 132X

PERCENTAGE(87) BULL • HOMO POLLED (T) • HOMO BLACK (T) • NXM1979953  
OWNED BY: PINEGAR LIMOUSIN

**MAGS THE GENERAL x AUTO REBECA 292S**

	CED	BW	WW	YW	MA	CEM	SC	DOC	YG	CW	RE	MB	SMTI
EPDS	10	-1.5	82	123	30	11	0.0	14	.02	40	.07	-.03	54
%RANK	30	15	4	10	20	5	95	60	90	15	95	45	35



## AUTO SILVERADO 5438

LIM-FLEX(68) BULL • HOMO POLLED (T) • HOMO BLACK (T) • LFM2074317  
OWNED BY: BAKER LIMOUSIN, MO

**AUTO CRUZE 132X x LVLS 8713W**

	CED	BW	WW	YW	MA	CEM	SC	DOC	YG	CW	RE	MB	SMTI
EPDS	8	0.2	74	112	31	8	0.3	13	-.04	37	.08	.10	56
%RANK	45	30	15	15	15	25	95	80	85	15	>95	30	25



## AUTO REAL DEAL 150B

PUREBRED BULL • HOMO POLLED (T) • HOMO BLACK (P-1) • NPM2070516  
OWNED BY: BEGERT LIMOUSIN, TX

**AUTO CRUZE 132X x AUTO LUCKIE TOO 423Y**

	CED	BW	WW	YW	MA	CEM	SC	DOC	YG	CW	RE	MB	SMTI
EPDS	7	1.0	81	111	28	5	0.6	13	-.13	31	.28	-.10	52
%RANK	60	45	4	15	30	75	65	80	65	30	85	55	40



## AUTO SURE DEAL 149B

PUREBRED BULL • HOMO POLLED (T) • HOMO BLACK (P1) • NPM2070515  
OWNED BY: OWNED BY TLC RANCH, GA

**AUTO CRUZE 132X x AUTO LUCKIE TOO 423Y**

	CED	BW	WW	YW	MA	CEM	SC	DOC	YG	CW	RE	MB	SMTI
EPDS	7	1.7	71	103	28	5	0.6	13	-.12	33	.31	-.15	47
%RANK	55	60	20	30	35	65	65	65	65	25	75	60	55

## RefH AUTO GUNN POINT 192Y

LIM-FLEX(75) BULL • HOMO POLLED (P1) • HET BLACK (T) • LFM2010466  
OWNED BY: PINEGAR LIMOUSIN

LH RODEMASTER 338R x AVA JO DHVO 721R

	CED	BW	WW	YW	MA	CEM	SC	DOC	YG	CW	RE	MB	SMTI
EPDS	6	2.1	68	101	25	5	0.7	16	-.06	33	.25	-.13	46
%RANK	65	70	30	30	55	65	50	55	80	25	80	55	55



AUTO GUNN POINT 192Y

## RefI AUTO FIRST CLASS 116A

LIM-FLEX(50) BULL • POLLED • HOMO BLACK (T) • LFM2040316  
OWNED BY: PINEGAR LIMOUSIN

DAMERON FIRST x MAGS MANUELA

	CED	BW	WW	YW	MA	CEM	SC	DOC	YG	CW	RE	MB	SMTI
EPDS	8	2.3	60	86	27	7	0.7	20	-.06	24	.24	.24	57
%RANK	45	75	60	65	40	40	65	55	85	55	90	20	25



AUTO FIRST CLASS 116A

## RefJ MAGS ALL-STAR 700A

LIM-FLEX(50) BULL • HOMO POLLED (T) • HOMO BLACK (P2) • LFM2049166  
OWNED BY: HALL CATTLE / COYOTE HILLS / DIAMOND HILLS

MAGS XUKALANI x MAGS YORKSHIRE PUDDING

	CED	BW	WW	YW	MA	CEM	SC	DOC	YG	CW	RE	MB	SMTI
EPDS	15	-1.2	70	109	31	10	2.1	5	-.02	29	.44	.15	57
%RANK	10	20	25	20	20	10	1	95	85	40	55	35	30



MAGS ALL-STAR 700A

## RefK EF XCESSIVE FORCE

LIM-FLEX(50) BULL • HET POLLED (T) • HOMO BLACK (P1) • LFM1958710  
OWNED BY: ETHERTON FARMS / THOMAS & SON FARMS / LINHART LIMOUSIN

D A TRAVELER 004 703 x CFLX MOLLYS IMAGE

	CED	BW	WW	YW	MA	CEM	SC	DOC	YG	CW	RE	MB	SMTI
EPDS	8	-2.2	54	86	21	9	2.1	14	.25	18	-.34	.44	60
%RANK	45	10	75	60	80	20	1	60	>95	75	>95	20	25



EF XCESSIVE FORCE

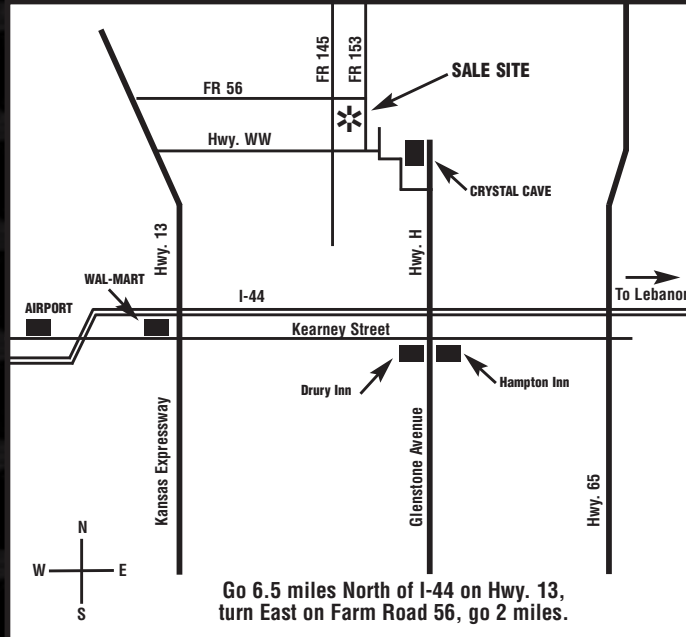
## NOTES

# PINEGAR

## LIMOUSIN



769 E. Hwy 60  
Republic, MO 65738



# PINEGAR HERDBUILDER XXIII

**SATURDAY,  
MARCH 18, 2017  
1 P.M. - AT THE FARM  
SPRINGFIELD, MO**