



3.4.17

LINHART LIMOUSIN

**BUSINESS  
DONE RIGHT**

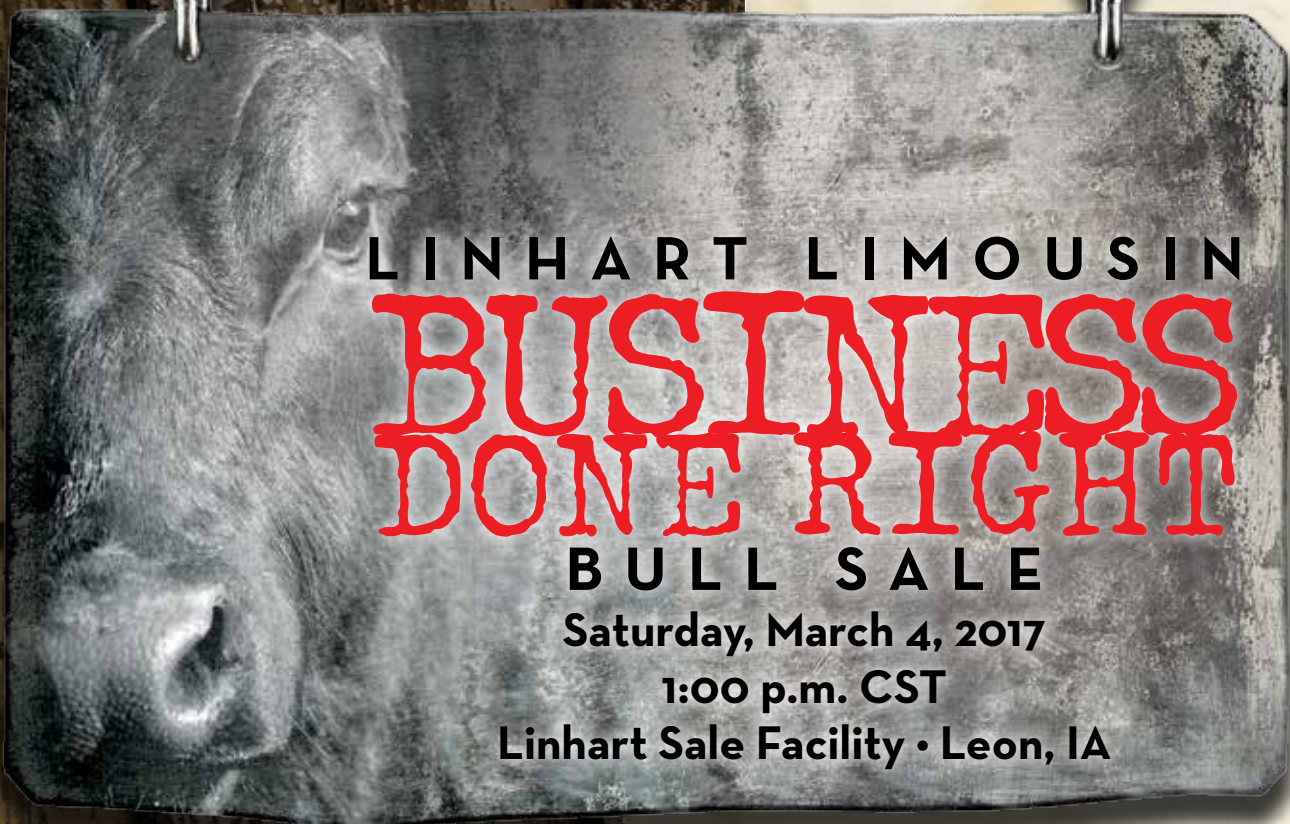
BULL SALE

1:00 p.m. CST

Linhart Sale Facility • Leon, IA

Offering 77 Registered  
Limousin & Lim-Flex Bulls

**LINHART  
LIMOUSIN**



LINHART LIMOUSIN  
**BUSINESS  
DONE RIGHT**

**BULL SALE**  
Saturday, March 4, 2017

1:00 p.m. CST  
Linhart Sale Facility • Leon, IA

**AUCTIONEER:**

CK "Sonny" Booth..... 918-542-1587

**CONSULTANTS**

Mark Smith, Grassroots Consulting..... 515-229-5227  
Bill Helton, Helton Consulting ..... 256-962-0256  
Randy Ratliff, R&R Marketing ..... 615-330-2735

**LIVESTOCK PROFESSIONALS:**

Mark Smith, Grassroots Consulting..... 515-229-5227  
Tom Rooney, *Midwest Marketer*..... 515-491-6025  
Andy Rest, *Limousin Today*..... 406-670-5678  
Justin Stout, *Stock Exchange*..... 913-645-5136  
DeRon Heldermon, *Special Assignment* ..... 405-850-5102



**SALE MANAGEMENT:**

MC Marketing Management  
Kiley McKinna • 402.350.3447  
mcmarketingsales@aol.com  
www.mcmarketingmanagement.com

**LINHART  
LIMOUSIN**

CHARLES & HEATHER LINHART  
Aaron, Kyle & Kevin  
27195 175TH STREET • LEON, IOWA 50144  
Charles 641-340-1306

**WWW.LINHARTLIMOUSIN.COM**

Watch our website for videos and additional sale details.

**SALE-DAY PHONES:**

Charles Linhart..... 641-340-1306  
Aaron Linhart..... 641-414-5060  
Kiley McKinna ..... 402-350-3447

**2017 SALE-SITE DIRECTIONS:**

GPS Address:  
19166 270th Ave. • Leon, Iowa  
From Leon, travel 2 miles north to 190th St. Turn east, go  
3 miles to 270th Av. Turn south, go 1/4 mile to sale facility  
on the east side.

**ACCOMMODATIONS:**

Lakeside Hotel & Casino: 641-342-9511  
777 Casino Dr., Osceola, Iowa 50213

**TERMS:**

Cattle sell under the standard sale terms and conditions of  
the North American Limousin Foundation. Payment may be  
made by cash or check due sale day.

**ANNOUNCEMENTS:**

Announcements made sale day by the owners, auctioneer  
or sale management take precedence over statements in  
the sale catalog.

**EPD INFORMATION:**

All EPDs and performance information are in accordance with  
the North American Limousin Foundation as of Spring 2017.

**TRUCKING:**

Free shipping will be available to central locations. Contact  
Charles Linhart, 641-340-1306, to make arrangements.

Limousin Friends & Enthusiasts,

We would like to invite you to the second edition of our "Business Done Right" Bull Sale, Saturday, March 4, 2017, at our sale facility near Leon, Iowa. We are a family operation just north of Leon, Iowa, in the heart of cow-calf country in southern Iowa. Our Limousin and Lim-Flex seedstock operation began in 1979 and has grown to nearly 600 producing females. Over the years we've always taken great pride in producing a quality product, our customers success and doing things the right way.

In this offering we have brought you our very best. This group of nearly 80 bulls consists of both spring yearlings and 18-month-old bulls. Like in years past, the influence of our premier donors, elite herd sires, progressive A.I. program and no "shortcuts" approach is evident in the bulls we are offering.

Naturally, the fluidity of the beef marketplace has likely caught your attention and have some of you asking the question, what's a good bull going to cost this year? Quite frankly, your guess is as good as ours, but here are a few things to keep in mind: 1) we continue to enjoy excellent cattle prices (among highest in the history of the business); 2) the cost of fuel and feed is significantly cheaper than five years ago and most importantly; 3) the spread in value of genetically superior calves is at an all-time high. That said, bulls that can sire market-topping calves are available in this sale as indicated by their visual traits and outstanding genetic profiles. So rest assured, the product at hand is exceptional and will come to you at various price levels. Bid with confidence.

It's our goal to make all business transactions with customers a pleasant experience. In addition, all cattle sold are fully guaranteed to the catalog in accordance with the North American Limousin Foundation as of Spring 2017. Furthermore, if you would like to discuss our sight-unseen purchase program, financial arrangements or trucking plans we are happy to accommodate. As a reminder to both our existing and prospective bull buyers, we encourage you to check out our industry competitive "Linhart Bull Program" incentives found on page 2 that we have in place to stand behind this quality set of bulls.

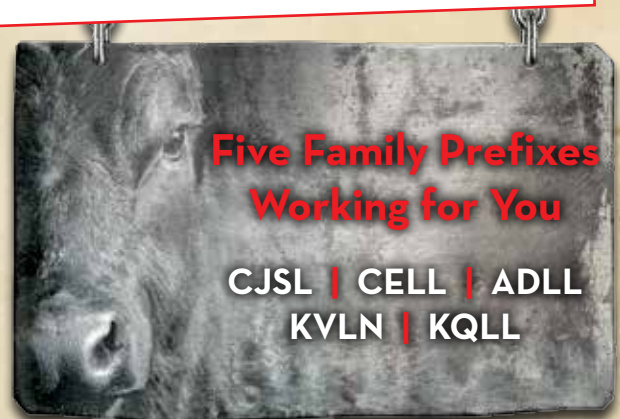
We look forward to seeing you at the sale. Plan to join us for lunch. If we can be of any assistance to you prior to or during the sale we have an open door policy and welcome all calls and questions. Don't hesitate to give us a call anytime.

Sincerely,

*The Linhart Family*  
Linhart Limousin

## SCHEDULE:

10:00 a.m. ....Viewing Begins  
Noon .....Complimentary Lunch  
1:00 p.m. ....2017 Business Done Right  
Bull Sale



# Offering Includes...

- 56 Homozygous Polled Bulls
- 45 Homozygous Black Bulls
- 28 Homozygous Black & Homozygous Polled Bulls
- 11 Purebred Bulls
- 4 Red Bulls

---

## Linhart Limousin Purchase Incentive Program

- **Guarantee...**one-year unconditional breeding guarantee. We fully stand behind our product.
- **Documentation...**bulls come complete with ultrasound, performance data, herd health & registration.
- **Financing Program...**50% down at time of purchase, balance due on delivery.
- **Housing...**complimentary development until April 15.
- **Trucking...**we offer free delivery to central points.
- **Volume Purchases...**buy 5 or more bulls, receive a 5% discount; 10 or more bulls receive a 10% discount.
- **Sight-Unseen Purchase Program...**you tell us what you're looking for, we'll do our best to meet those needs, and if you're not satisfied when you get your bull(s), you don't own them.





## LOTS 1A -53

We couldn't be more excited to offer you this outstanding set of spring yearling bulls. Through our aggressive AI and embryo transfer program, we attempt to push the genetic envelope while maintaining the same common sense approach we know our commercial customers use. While fresh pedigrees and breed-leading EPDs have their place, they are of little value if the bulls we offer are not packed with the convenience traits all true cattleman demand. We feel we have accomplished our goals, but you, our customers, serve as the ultimate judge. Your feedback is not only welcomed, but appreciated.

# SPRING YEARLING BULLS



LOT 1A



## CJSL 6257D ET

1/19/2016 | HOMO Black (T) | HOMO Polled (P2)  
LIM-FLEX(56/50.4) | CJSL 6257D | LFM2106173

Act. BW ..... 86  
Adj. WW ..... 764

MAGS WINSTON

**MAGS ZODIAC**

MAGS XANTHOS

SILVEIRAS STYLE 9303

**LLJB ABSOLUTE STYLE 3056A**

MAGS WASSAIL

BT CROSSOVER 758N

MAGS STRAWBERRY

DHVO DEUCE 132R

BOHI RHONDA 314R

GAMBLES HOT ROD

SILVEIRAS ELBA 252O

DHVO DEUCE 132R

MAGS MANDA

EPDS	CE	BW	WW	YW	MA	CM	SC	DC	YG	CW	RE	MS	\$MI
	12	1.2	71	117	21	10	0.9	18	.03	41	.17	.28	62

Folks here is one of the best herd-sire prospects to ever carry a Linhart prefix and it's with confidence we present to you CJSL 6257D ET! He comes to you in a double homozygous package and couples that with a super stout-

featured, heavy-structured, massive-made, deep-sided, wide-topped, functional look. Numerically, he's among the breed's finest, ranking in the top 20% or better for Calving-Ease Direct, Weaning Weight, Yearling Weight, calving-Ease Maternal, Carcass Weight, Marbling and \$MTI! From a pedigree standpoint, he's out of the highly popular A.I. sire, MAGS Zodiac, who has proven his worth in many pastures across the country and out of our never-miss, many-time champion female and our lead donor, LLJB Absolute Style 3056A. Bottom line is, if you're looking for that breeding bull that combines phenotype and breed leading numerics in one package, your search is over! Bid with confidence.

# SPRING YEARLING BULLS



**LOT 1B**



**LOT 1C**



## CJSL 6260D ET

1/25/2016 | HOMO Black (T) | HOMO Polled (P2)  
LIM-FLEX(56/50.4) | CJSL 6260D | LFM2106168

Act. BW ..... 94  
Adj. WW ..... 748

MAGS WINSTON  
**MAGS ZODIAC**  
MAGS XANTHOUS  
SILVEIRAS STYLE 9303  
**LLJB ABSOLUTE STYLE 3056A**  
MAGS WASSAIL

BT CROSSOVER 758N  
MAGS STRAWBERRY  
DHVO DEUCE 132R  
BOHI RHONDA 314R  
GAMBLES HOT ROD  
SILVEIRAS ELBA 2520  
DHVO DEUCE 132R  
MAGS MANDA

EPDS	CE	BW	WW	YW	MA	CM	SC	DC	YG	CW	RE	MS	\$MI
	12	2.3	69	117	21	10	0.9	18	.03	41	.17	.28	61

This full brother to Lots 1A and 1C puts it all together starting with a dynamite pedigree. He's by one of the most numerically impressive proven bulls on the market, MAGS Zodiac, and out of LLJB Absolute Style 3056A. Point blank, this double homozygous 56% Lim-Flex has all the makings of the next great one. Take note of his unique number package accentuated by monster EPDs for CE, WW, YW and MB. His actual performance is equally impressive, highlighted by an adjusted weaning weight near 750 pounds. Without a doubt, a bull who needs to end up in the hands of a progressive cattlemen.



## CJSL 6265D ET

1/16/2016 | HOMO Black (T) | HOMO Polled (P2)  
LIM-FLEX(56/50.4) | CJSL 6265D | LFM2106169

Act. BW ..... 82  
Adj. WW ..... 688

MAGS WINSTON  
**MAGS ZODIAC**  
MAGS XANTHOUS  
SILVEIRAS STYLE 9303  
**LLJB ABSOLUTE STYLE 3056A**  
MAGS WASSAIL

BT CROSSOVER 758N  
MAGS STRAWBERRY  
DHVO DEUCE 132R  
BOHI RHONDA 314R  
GAMBLES HOT ROD  
SILVEIRAS ELBA 2520  
DHVO DEUCE 132R  
MAGS MANDA

EPDS	CE	BW	WW	YW	MA	CM	SC	DC	YG	CW	RE	MS	\$MI
	12	0.7	64	117	21	10	0.9	18	.03	41	.17	.28	60

This flushmate to Lots 1A and 1B is just like his brothers—homozygous black, homozygous polled and phenotypically further represents of the quality of this highly predictable mating. He has loads of body shape, is stout and eye-appealing. Numerically, he offers distinct a calving-ease advantage and also possess extraordinary genetics for growth performance. He ranks in the top 20% or better in 7 economically relevant EPDs. A big-time herd-sire prospect who covers all the bases.

# SPRING YEARLING BULLS



LOT 2



## CJSL 6018D

1/29/2016 | HOMO Black (P3) | HOMO Polled (T)  
LIM-FLEX(54/48.9) | CJSL 6018D | LFM2104991

Act. BW ..... 86  
Adj. WW ..... 818

MAGS WINSTON  
**MAGS ZODIAC**  
MAGS XANTHOUS  
MAGS XUKALANI  
**CJSL 2090Z**  
MAGS XULEMA

BT CROSSOVER 758N  
MAGS STRAWBERRY  
DHVO DEUCE 132R  
BOHI RHONDA 314R  
RITO 112 OF 2536 RITO 616  
MAGS UKALANI  
MAGS SAVAGE  
MAGS ULEMA

EPDS	CE	BW	WW	YW	MA	CM	SC	DC	YG	CW	RE	MS	\$MI
	12	0.6	80	135	24	10	1.0	8	.11	52	.29	.42	69

A true cattleman understand it takes great cows to make great bulls. That said, on the top side of 6018D he features the prolific donor cows—MAGS Strawberry, MAGS

Xanthous and BOHI Rhonda. The bottom side is equally stout. His own mother is one of our most consistent donors as evidenced by her son CJSL Creed who topped our 2016 bull sale at \$27,500 selling to the esteemed Tubmill Creek Farms program. This sound, extra soggy centered, deep flanked bull is flat in his shoulder and loaded with individual growth performance. He sets the standard numerically by charting an impressive birth to yearling spread, posting over 800 pounds of adjusted weaning and while still posting a .42 marbling EPD. If you like cattle built to hit mainstream targets, turn your attention to this elite herd-sire prospect sale day.



# SPRING YEARLING BULLS



LOT 3



LOT 4



## CJSL 6124D ET

3/5/2016 | HOMO Black (P1) | HOMO Polled (P1)  
PERCENTAGE(81/72.8) | CJSL 6124D | NXM2106141

Act. BW..... 71  
Adj. WW..... 852

LH WAR HERO 195W  
**MAGS ANCHOR**  
MGS XIPHOPAGOUS  
  
JCL LODESTAR 27L  
**AUTO CARMINDA 656S**  
AUTO CARMINDA 872P

JCL LODESTAR 27L  
VERMILION ERICA LADY 1229  
DHVO DEUCE 132R  
MAGS SALINA  
HUNTS HI-LITER 245G  
LOGAN'S CHEERLEADER 280G  
AUTO BLACK DAKOTA 129J  
AUTO JULIA 247J

EPDS	CE	BW	WW	YW	MA	CM	SC	DC	YG	CW	RE	MS	\$MI
8	-0.2	84	120	20	6	0.9	15	.04	44	.17	.12	59	

High quality and high percentage alert! Take note of the actual performance of this sharp-fronted, smooth-shouldered double Homozygous son of MAGS Anchor. Lots of growth, huge testicles and impressive adjusted weaning growth north of 850 pounds. Take it one step further, pedigree-wise he is by the one of lead purebred donor cows in the both the Linhart and Magness Land & Cattle programs that hails from the progressive Pinegar Limousin firm—AUTO Carminda 656S. CJSL 6124D combines the phenotype, pedigree and numerical package that are pre-requisites for big-time herd bulls.



## CELL 6122D ET

3/5/2016 | HOMO Black (P1) | HOMO Polled (P3)  
LIM-FLEX(68/60.9) | CELL 6122D | LFM2106135

Act. BW..... 86  
Adj. WW..... 825

LH WAR HERO 195W  
**MAGS ANCHOR**  
MGS XIPHOPAGOUS  
  
DHVO TREY 133R  
**EF XPECT THE BEST**  
VVLC BLACK LUCY 416R

JCL LODESTAR 27L  
VERMILION ERICA LADY 1229  
DHVO DEUCE 132R  
MAGS SALINA  
GPFF BLAQUE RULON  
AMY JO DHAN 20L  
AUTO BLACK DAKOTA 129J  
WHITESTONE LUCY L128

EPDS	CE	BW	WW	YW	MA	CM	SC	DC	YG	CW	RE	MS	\$MI
5	2.3	78	98	14	2	0.8	12	.04	31	.24	.12	57	

Another double homozygous Anchor son who does the family heritage proud. This attractive-patterned, yet soggy individual is square in his hip and big footed. Like all of the Anchor progeny, he combines plenty of real-world performance with a data set that makes your mouth water. Take special note, he charted 825 pounds of adjusted weaning weight which promise to translate into paying the bills in any cattle market. Don't miss this powerhouse herd sire sale day.

# SPRING YEARLING BULLS



LOT 5



## CELL 6120D ET

3/4/2016 | Het Black (T) | HOMO Polled (T)  
LIM-FLEX(50/45.2) | CELL 6120D | LFM2106146

Act. BW.....80  
Adj. WW.....837

S A V HARVESTOR 0338  
**S A V HESSTON 2217**  
S A V EMBLYNETTE 3301  
DHVO DEUCE 132R  
**AUTO TOOTSIE POP 2272T**  
EXLR MOLLY 7103K

S A V HERITAGE 6295  
S A V EMBLYNETTE 7749  
SAF 598 BANDO 5175  
S A V EMBLYNETTE 7319  
GPFF BLAQUE RULON  
AMY JO DHAN 20L  
EXLR DAKOTA 353G  
EXLR MOLLY 343G

EPDS	CE	BW	WW	YW	MA	CM	SC	DC	YG	CW	RE	MS	\$MI
	8	0.5	76	101	27	6	1.1	-	-.03	31	.52	.31	64

If you like them big bellied and soggy with huge testicles, then study this guy from every angle. By the Angus great S A V Hesston 2217 and out the winning combination of Deuce x EXLR Molly on the bottom, he is bred to be every bit as good as he really is. As you would expect with breeding like his, he coupled well-above breed averages for growth with a marbling figure which ranks in the top 15% and \$MTI in the top 10%.

# SPRING YEARLING BULLS



LOT 6



LOT 7



LOT 6

## CELL 6125D ET

3/6/2016 | HOMO Black (T) | HOMO Polled (T)  
LIM-FLEX(50/45.2) | CELL 6125D | LFM2106147

Act. BW ..... 91  
Adj. WW ..... 812

S A V HARVESTOR O338  
**S A V HESSTON 2217**  
S A V EMBLYNETTE 3301  
DHVO DEUCE 132R  
**AUTO TOOTSIE POP 2272T**  
EXLR MOLLY 7103K

S A V HERITAGE 6295  
S A V EMBLYNETTE 7749  
SAF 598 BANDO 5175  
S A V EMBLYNETTE 7319  
GPFF BLAQUE RULON  
AMY JO DHAN 20L  
EXLR DAKOTA 353G  
EXLR MOLLY 343G

EPDS	CE	BW	WW	YW	MA	CM	SC	DC	YG	CW	RE	MS	\$MI
	8	1.9	74	101	27	6	1.1	-	-.03	31	.52	.31	64

Not to sound like a broken record, but this full brother to Lot 5 is doing all we had hoped for and more. He is combining phenotype with actual performance and EPDs as well as any young bull in this sale offering. Yet another Hesston x Tootsie Pop son who typifies the combination of power, style and performance we have come to expect out of this storied lineage. Bid with confidence March 4.



LOT 7

## CJSL 6144D ET

3/8/2016 | DBL Black | HOMO Polled (P1)  
LIM-FLEX(50/44.7) | CJSL 6144D | LFM2106742

Act. BW ..... 83  
Adj. WW ..... 815

S A V HARVESTOR O338  
**S A V HESSTON 2217**  
S A V EMBLYNETTE 3301  
JCL LODESTAR 27L  
**AUTO CARMINDA 656S**  
AUTO CARMINDA 872P

S A V HERITAGE 6295  
S A V EMBLYNETTE 7749  
SAF 598 BANDO 5175  
S A V EMBLYNETTE 7319  
HUNTS HI-LITER 245G  
LOGAN'S CHEERLEADER 280G  
AUTO BLACK DAKOTA 129J  
AUTO JULIA 247J

EPDS	CE	BW	WW	YW	MA	CM	SC	DC	YG	CW	RE	MS	\$MI
	10	0.2	73	115	27	6	0.9	-	0.1	39	.22	.53	71

Carminda is a donor cow who continues the stamp her mark on the breed producing attractive, performance-oriented cattle. This herd-sire prospect is no exception. 6144D is homozygous polled, carries amazing depth of rib while maintaining plenty of power and substance. Couple that with WW, YW, CW, MB and \$MTI EPDs that rank in the top 15% or better and you have a herd bull worthy of considerable attention.

# SPRING YEARLING BULLS



**LOT 8**



## CELL 6263D ET

1/21/2016 | Het Black (T) | HOMO Polled (P1)  
LIM-FLEX(67/60.5) | CJSL 6263D | LFM2106187

Act. BW ..... 94  
Adj. WW ..... 870

S A V PIONEER 7301  
**TMCK HYDRAULIC 17Y**  
HSF WALL OF FAME  
DHVO TREY 133R  
**AUTO PEYTON 206Y**  
CARROUSELS PINA COLADA

SAV FINAL ANSWER 0035  
S A V BLACKBIRD 5297  
RPY PAYNES SIGNAL 6S  
HSF PENTHOUSE PIN-UP  
GPFF BLAQUE RULON  
AMY JO DHAN 20L  
AUTO BLACK DAKOTA 129J  
ELMW GINNIE P58G

This Hydraulic son sets the tone for performance. It's easy to appreciate the power and growth this homozygous polled, son of Hydraulic out of the productive AUTO Peyton donor. His 88 WW EPD ranks in the top 1% while his monster 111 YW EPD ranks in the top 15%. Couple that with an adjusted weaning weight of 870 pounds and you are looking at a bull with tons of real-world application.

EPDS	CE	BW	WW	YW	MA	CM	SC	DC	YG	CW	RE	MS	\$MI
	6	3.7	88	111	19	3	0.9	12	.01	40	.52	-.06	54

# SPRING YEARLING BULLS



LOT 9



LOT 10



## CJSL 6026D

2/1/2016 | Het Black (T) | HOMO Polled (T)  
LIM-FLEX(42/38.9) | CJSL 6026D | LFM21O4997

Act. BW ..... 81  
Adj. WW ..... 843

S A V PIONEER 7301  
**TMCK HYDRAULIC 17Y**  
HSF WALL OF FAME  
LVLS 3202U  
**LVLS YAZMIN 668Y**  
CJLM ROXANNE 668W

SAV FINAL ANSWER 0035  
S A V BLACKBIRD 5297  
RPY PAYNES SIGNAL 6S  
HSF PENTHOUSE PIN-UP  
BON VIEW NEW DESIGN 1407  
LVLS 9202S  
MAGS SCOTLAND  
MAGS ROAD HOME

EPDS **CE BW WW YW MA CM SC DC YG CW RE MS \$MI**  
9 1.3 85 132 25 8 1.2 9 .05 50 .43 .33 67

Proof that Hydraulic works in nearly every production scenario stands before you in this homozygous polled individual who is out of a moderate made, low maintenance cow we picked up out of the progressive Lonely Valley program. Like his half brothers on this spread, he too is the definition of a true beef bull from every angle. Study his pedigree, admire his phenotype and covet his data set, then bid accordingly.



## CELL 6252D ET

1/17/2016 | Het Black (T) | HOMO Polled (P1)  
LIM-FLEX(67/60.5) | CELL 6252D | LFM21O6185

Act. BW ..... 84  
Adj. WW ..... 737

S A V PIONEER 7301  
**TMCK HYDRAULIC 17Y**  
HSF WALL OF FAME  
DHVO TREY 133R  
**AUTO PEYTON 206Y**  
CARROUSELS PINA COLADA

SAV FINAL ANSWER 0035  
S A V BLACKBIRD 5297  
RPY PAYNES SIGNAL 6S  
HSF PENTHOUSE PIN-UP  
GPFF BLAQUE RULON  
AMY JO DHAN 20L  
AUTO BLACK DAKOTA 129J  
ELMW GINNIE P58G

EPDS **CE BW WW YW MA CM SC DC YG CW RE MS \$MI**  
6 2.3 75 111 19 3 0.9 12 .01 40 .52 -.06 51

Here's a stout full brother to Lot 8. As we said earlier about his brother, his sire, Hydraulic, is siring eye-appealing cattle that still perform at the top of their contemporaries. This homozygous polled herd bull keeps birth weights in check while offering top 15% rankings for WW, YW, and CW. And did you notice he stems back to the legendary Pina Colada in his stellar pedigree?

# SPRING YEARLING BULLS



**LOT 11**



**LOT 12**



## ADLL 6262D ET

1/23/2016 | DBL Black | HOMO Polled (T)  
LIM-FLEX(50/44.9) | ADLL 6262D | LFM2106166

Act. BW ..... 92  
Adj. WW ..... 794

EXG RS FIRST RATE S903 R3  
**DAMERON C-5 AMERICAN CLASSIC**  
DAMERON NORTHERN MISS 311  
DHVO DEUCE 132R  
**EF YADDA YADDA 809Y**  
MAGS RUFFLES

EXAR LUTTON 1831  
RAFTER S BLACKCAP P909  
DAMERON P V F RAPTOR 702  
DAMERON MISS 550  
GPFF BLAQUE RULON  
AMY JO DHAN 20L  
TNUH BLUE PRINT 245H  
MAGS LADY DOCTOR

EPDS	CE	BW	WW	YW	MA	CM	SC	DC	YG	CW	RE	MS	\$MI
	6	2.7	67	95	30	6	0.8	12	-.15	29	.45	.14	56

The genetic line behind 6262D is simply impressive! On the top side, Dameron C-5 American Classic, a full brother to Dameron First Class, has generated hundreds of thousands of dollars through sale rings across the country. On the bottom side, the prolific Yadda Yadda donor, who is now deceased, has left a lasting mark on the Linhart program. This own son of hers shows us why cattle bred this way are in such high demand. Don't miss this exceptional homozygous polled individual March 4.



## CJSL 6127D ET

3/6/2016 | Het Black (T) | HOMO Polled (T)  
LIM-FLEX(50/46) | CJSL 6127D | LFM2106131

Act. BW ..... 68  
Adj. WW ..... 718

S A V 8180 TRAVELER 004  
**D A TRAVELER 004 703**  
ROSEWOOD ERICA 5010  
TNUH BLUE PRINT 245H  
**SRWC TOPAZ 7000T**  
JBRH SHEZA RUBY

SITZ TRAVELER 8180  
BOYD FOREVER LADY 8003  
LEACHMAN SAUGAHATCHEE3000  
R A ERICA 456  
WADDLES COBALT 3106  
TNUH MISS C245  
EXLR NEW GENERATION 071M  
JBRH SHEZA DANDY

EPDS	CE	BW	WW	YW	MA	CM	SC	DC	YG	CW	RE	MS	\$MI
	9	-1.0	58	92	28	9	1.1	14	-.02	27	.24	.15	53

Homozygous polled bulls made like 6127D is what the Lim-Flex business is all about. Straight in his lines, big volumned, stout and sound are hallmarks of this Traveler son. We really like his balanced EPD profile highlighted by a top 15% ranking for Birth Weight. Also take note he posted a user-friendly 68-pound birth weight and could be consider heifer safe.

# SPRING YEARLING BULLS

LOT  
**13**

## CELL 6062D

2/18/2016 | HOMO Black (P2) | HOMO Polled (T)  
LIM-FLEX(62/55.6) | CELL 6062D | LFM2105035

Act. BW .....90  
Adj. WW .....797

AHCC XPENSE ACCOUNT X516  
**COLE ABSOLUTE O5A**  
COLE MISS TRAVELER O29X  
DHVO DEUCE 132R  
**PBR5 ZOEY 922**  
BUFORD JOY 9097

KAJO RESPONDER 120R  
AHCC MISS NORHTSTAR R516  
COLEMAN TRAVELER 797  
COLE 91L  
GPFF BLAQUE RULON  
AMY JO DHAN 20L  
BOHI PREDESTINED 6100  
J BAR 7 AUDREY'S JOY 5487



LOT 13

EPDS	CE	BW	WW	YW	MA	CM	SC	DC	YG	CW	RE	MS	\$MI
	4	3.6	90	148	22	3	-	-	.01	64	.86	.05	59

Being out of the high performance COLE Absolute O5A A.I. sire and a Deuce daughter, there is lots of eye appeal and growth bred into this double homozygous prospect. Note, he boasts an impressive EPD profile highlighted by ranking in the top 1% for Weaning Weight, Yearling Weight, Carcass Weight and is supported with a top 4% REA figure.

LOT  
**14**

## CELL 6164D

3/12/2016 | HOMO Black (T) | HOMO Polled (P1)  
LIM-FLEX(50/42.4) | CELL 6164D | LFM2105372

Act. BW .....68  
Adj. WW .....796

AHCC WESTWIND W544  
**AHCC BARN BURNER B907**  
LVLS 9066U  
CB BLOCK PARTY 156  
**BRADS BESS 324**  
BRADS BESS 132

KAJO RESPONDER 120R  
AHCC MISS WULF HUNT R544  
LVLS FARMER JOHN 7428P  
LVLS9066R  
WERNER WAR PARTY 2417  
CB 965 MAINLINE  
H&K CC&7 H28  
BRADS BESS 6181



LOT 14

EPDS	CE	BW	WW	YW	MA	CM	SC	DC	YG	CW	RE	MS	\$MI
	6	-0.9	63	100	31	3	-	-	-.07	28	.38	.34	62

If you like soft-made, loose-structured cattle that will be easy to feed, this bull deserves a long, hard look. Out of the popular Hager Cattle Company A.I. sire, AHCC Barn Burner, this son stacks up among the breed's best for Birth Weight, Milk and Marbling. He could be considered heifer safe boasting an actual birth weight of 68 pounds.

LOT  
**15**

## CJSL 6007D

1/23/2016 | HOMO Black (T) | HOMO Polled (T)  
LIM-FLEX(61/56.1) | CJSL 6007D | LFM2104981

Act. BW .....84  
Adj. WW .....738

S A V PIONEER 7301  
**TMCK HYDRAULIC 17Y**  
HSF WALL OF FAME  
DHVO DEUCE 132R  
**MAGS ZERLINA**  
EXLR 199H

S A V FINAL ANSWER 0035  
S A V BLACKBIRD 5297  
RPY PAYNES SIGNAL 6S  
HSF PENTHOUSE PIN-UP  
GPFF BLAQUE RULON  
AMY JO DHAN 20L  
WULFS FANFARE 4055F  
EXLR 558F



TMCK Hydraulic 17Y | Sire of Lot 15

EPDS	CE	BW	WW	YW	MA	CM	SC	DC	YG	CW	RE	MS	\$MI
	8	2.4	82	123	27	5	1.3	16	-.01	46	.52	.08	58

If we didn't know better, we would swear 6007 could not only read, but write too. A perfect pedigree combination of both proven and fresh genetics along with an EPD profile that features five top 10% rankings for WW, YW, TM, SC and CW. And as if that isn't enough, he weaned off at more than 700 lbs. Here's one who promises to pack on the pounds on any calf crop.

# SPRING YEARLING BULLS

LOT  
**16**

## CELL 6276D ET

1/13/2016 | HOMO Black (T) | HOMO Polled (P1)  
LIM-FLEX(67/60.5) | CELL 6276D | LFM2106180

Act. BW .....90  
Adj. WW .....703

S A V PIONEER 7301  
**TMCK HYDRAULIC 17Y**  
HSF WALL OF FAME  
DHVO TREY 133R  
**AUTO PEYTON 206Y**  
CARROUSELS PINA COLADA

SAV FINAL ANSWER 0035  
S A V BLACKBIRD 5297  
RPY PAYNES SIGNAL 6S  
HSF PENTHOUSE PIN-UP  
GPFF BLAQUE RULON  
AMY JO DHAN 20L  
AUTO BLACK DAKOTA 129J  
ELMW GINNIE P58G

EPDS **CE BW WW YW MA CM SC DC YG CW RE MS \$MI**  
6 3.1 72 111 19 3 0.9 12 .01 40 .52 -.06 50

LOT  
**17**

## CELL 6267D ET

1/16/2016 | HOMO Black (T) | HOMO Polled (P1)  
LIM-FLEX(67/60.5) | CELL 6267D | LFM2106182

Act. BW .....89  
Adj. WW .....777

S A V PIONEER 7301  
**TMCK HYDRAULIC 17Y**  
HSF WALL OF FAME  
DHVO TREY 133R  
**AUTO PEYTON 206Y**  
CARROUSELS PINA COLADA

SAV FINAL ANSWER 0035  
S A V BLACKBIRD 5297  
RPY PAYNES SIGNAL 6S  
HSF PENTHOUSE PIN-UP  
GPFF BLAQUE RULON  
AMY JO DHAN 20L  
AUTO BLACK DAKOTA 129J  
ELMW GINNIE P58G

EPDS **CE BW WW YW MA CM SC DC YG CW RE MS \$MI**  
6 3.0 79 111 19 3 0.9 12 .01 40 .52 -.06 51

LOT  
**18**

## ADLL 6266D ET

1/22/2016 | Black | Het Polled (T)  
PUREBRED(87/76) | ADLL 6266D | NPM2106191

Act. BW .....82  
Adj. WW .....681

AHCC WESTWIND W544  
**AHCC BARN BURNER B907**  
LVLS 9066U  
MAGS SASQUATCH  
**DJ WESTCOAST GIRL**  
MAGS SISTER ACT

KAJO RESPONDER 120R  
AHCC MISS WULF HUNT R544  
LVLS FARMER JOHN 7428P  
LVLS9066R  
EXLR NEW GENERATION 071M  
MAGS FRUITFUL 487M  
CONNELLY LEAD ON  
ALCM KACTUS KID

EPDS **CE BW WW YW MA CM SC DC YG CW RE MS \$MI**  
7 0.7 51 88 28 8 0.8 14 -.05 24 .13 .06 48

LOT  
**19**

## ADLL 6005D

1/22/2016 | HOMO Black (P1) | HOMO Polled (T)  
LIM-FLEX(50/44.4) | ADLL 6005D | LFM2104979

Act. BW .....78  
Adj. WW .....596

TC ABERDEEN 759  
**MAGS Y-AXIS**  
MAGS UAHUKA  
MAGS WINSTON  
**MAGS BON BON**  
MAGS ZONDRA

C R A BEXTOR 872 5205 608  
TC BLACKBIRD 4034  
DHVO DEUCE 132R  
CARROUSELS PINA COLADA  
BT CROSSOVER 758N  
MAGS STRAWBERRY  
LH RODEMASTER 338R  
MAGS THOROUGHBRED

EPDS **CE BW WW YW MA CM SC DC YG CW RE MS \$MI**  
14 -0.5 60 102 27 11 0.9 26 -.25 30 .7 .18 57

LOT  
**20**

## ADLL 6264D ET

1/23/2016 | Black | HOMO Polled (T)  
PUREBRED(87/76) | ADLL 6264D | NPM2106192

Act. BW .....80  
Adj. WW .....610

AHCC WESTWIND W544  
**AHCC BARN BURNER B907**  
LVLS 9066U  
MAGS SASQUATCH  
**DJ WESTCOAST GIRL**  
MAGS SISTER ACT

KAJO RESPONDER 120R  
AHCC MISS WULF HUNT R544  
LVLS FARMER JOHN 7428P  
LVLS9066R  
EXLR NEW GENERATION 071M  
MAGS FRUITFUL 487M  
CONNELLY LEAD ON  
ALCM KACTUS KID

EPDS **CE BW WW YW MA CM SC DC YG CW RE MS \$MI**  
7 0.5 45 88 28 8 0.8 14 -.05 24 .13 .06 47

LOT  
**21**

## CJSL 6251D ET

1/23/2016 | Het Black (T) | HOMO Polled (T)  
LIM-FLEX(75/66.8) | CJSL 6251D | LFM2106171

Act. BW .....80  
Adj. WW .....653

D A TRAVELER 004 703  
**EF XCESSIVE FORCE**  
CFLX MOLLYS IMAGE  
DHVO DEUCE 132R  
**MAGS WASSAIL**  
MAGS MANDA

S A V 8180 TRAVELER 004  
ROSEWOOD ERICA 5010  
DHVO DEUCE 132R  
JCL PEPPERMINT  
GPFF BLAQUE RULON  
AMY JO DHAN 20L  
EXLR DAKOTA 353G  
MAGS JEWEL

EPDS **CE BW WW YW MA CM SC DC YG CW RE MS \$MI**  
5 -0.1 53 84 22 8 1.5 16 .06 20 -.06 .18 52

LOT  
**22**

## CJSL 351D

1/30/2016 | HOMO Black (T) | HOMO Polled (T)  
LIM-FLEX(50/43.3) | TMCK 351D | LFM2105766

Act. BW .....50  
Adj. WW .....824

S A V PIONEER 7301  
**TMCK ALFALFA 35X**  
TMCK JOYCE 570U  
MAGS Y-AXIS  
**TMCK BLUSH 109B**  
AUTO BROOKLYN 249U

SAV FINAL ANSWER 0035  
S A V BLACKBIRD 5297  
EXLR NEW GENERATION 037R  
LESF 5324R  
TC ABERDEEN 759  
MAGS UAHUKA  
G A R PREDESTINED  
MAGS NIGHT AMBUSH

EPDS **CE BW WW YW MA CM SC DC YG CW RE MS \$MI**  
10 -0.4 72 115 28 8 1.1 9 -.14 38 .86 .21 61

LOT  
**23**

## CJSL 6025D

2/1/2016 | Het Black (T) | HOMO Polled (T)  
LIM-FLEX(67/61.8) | CJSL 6025D | LFM2104996

Act. BW .....82  
Adj. WW .....721

S A V PIONEER 7301  
**TMCK HYDRAULIC 17Y**  
HSF WALL OF FAME  
MAGS SCORCHER  
**CJSL ULTRA HOT 8032U**  
CJSL SYLVIA 607S

SAV FINAL ANSWER 0035  
S A V BLACKBIRD 5297  
RPY PAYNES SIGNAL 6S  
HSF PENTHOUSE PIN-UP  
WULFS FANFARE 4055F  
ELMW GINNIE P58G  
JCL LODESTAR 27L  
MAGS MOON ROCK

EPDS **CE BW WW YW MA CM SC DC YG CW RE MS \$MI**  
8 1.6 73 112 28 8 1.0 14 .01 39 .31 .06 54



# SPRING YEARLING BULLS

LOT  
**24**

## CELL 6033D

2/2/2016 | Het Black (T) | HOMO Polled (T)  
LIM-FLEX(42/39.2) | CELL 6033D | LFM2105005

Act. BW .....87  
Adj. WW .....722

S A V PIONEER 7301  
**TMCK HYDRAULIC 17Y**  
HSF WALL OF FAME  
BR MIDLAND  
**MAGS YAMUNA**  
MAGS MARQUEE

SAV FINAL ANSWER 0035  
S A V BLACKBIRD 5297  
RPY PAYNES SIGNAL 6S  
HSF PENTHOUSE PIN-UP  
TWIN VALLEY PRECISIONE161  
BR ROYAL LASS 7036-19  
EXLR DAKOTA 353G  
MAGS JEWEL

EPDS **CE BW WW YW MA CM SC DC YG CW RE MS \$MI**  
7 2.2 77 120 20 7 1.2 8 0 45 .62 .15 59

LOT  
**25**

## CELL 6050D

2/11/2016 | HOMO Black (P-1) | Het Polled (T)  
LIM-FLEX(62/55.5) | CELL 6050D | LFM2105019

Act. BW .....82  
Adj. WW .....716

AHCC WESTWIND W544  
**AHCC ZERO DESIGN Z838**  
AHCC MISS PRECISION U838  
S A V MANDAN 5664  
**MAGS YEASTLIKE**  
MAGS GRETCHEN 855M

KAJO RESPONDER 120R  
AHCC MISS WULF HUNT R544  
COLEMAN PRODUCTION 608  
HC DYNASTY 638  
S A V 8180 TRAVELER 004  
S A V ABIGALE 0451  
MAGS JUMANJI  
MAGS GRETCHEN

EPDS **CE BW WW YW MA CM SC DC YG CW RE MS \$MI**  
5 1.2 58 97 29 6 1.2 12 -.14 30 .89 .12 53

LOT  
**26**

## KQLL 6057D

2/16/2016 | DBL Black | HOMO Polled (T)  
LIM-FLEX(62/55.6) | KQLL 6057D | LFM2105030

Act. BW .....75  
Adj. WW .....717

RITO 112 OF 2536 RITO 616  
**MAGS XUKALANI**  
MAGS UKALANI  
EXLR DAKOTA 353G  
**ALCM NO CAL 564N**  
ALCM KALL LATER

RITO 616 OF 4B20 6807  
G A R PRECISION 2536  
BASIN FRANCHISE P142  
CARROUSELS PINA COLADA  
WULF'S COUNT DOWN 9251C  
CANE RIDGE DAPHNE 011D  
KRMC BLACK LEGACY 917B  
JCL BLACK CHERRY

EPDS **CE BW WW YW MA CM SC DC YG CW RE MS \$MI**  
12 0.3 55 81 26 9 1.3 -1 -.23 18 .27 .11 53

LOT  
**27**

## CELL 6068D

2/19/2016 | HOMO Black (P2) | HOMO Polled (T)  
LIM-FLEX(75/67.1) | CELL 6068D | LFM2105040

Act. BW .....84  
Adj. WW .....740

AHCC XPENSE ACCOUNT X516  
**COLE ABSOLUTE 05A**  
COLE MISS TRAVELER 029X  
AHCC WESTWIND W544  
**MAGS YEANLING**  
MAGS SALINA

KAJO RESPONDER 120R  
AHCC MISS NORHSTAR R516  
COLEMAN TRAVELER 797  
COLE 91L  
KAJO RESPONDER 120R  
AHCC MISS WULF HUNT R544  
BR MIDLAND  
MAGS LADY ACE

EPDS **CE BW WW YW MA CM SC DC YG CW RE MS \$MI**  
5 2.9 84 147 26 5 1.0 10 -.02 62 .95 -.18 50

LOT  
**28**

## CELL 6070D

2/20/2016 | Het Black (T) | HOMO Polled (T)  
LIM-FLEX(75/67.8) | CELL 6070D | LFM2105042

Act. BW .....86  
Adj. WW .....721

S A V BISMARCK 5682  
**CELL3211A**  
AUTO TOOTSIE POP 2272T  
MAGS SAVAGE  
**MAGS UNFORGETTABLE**  
MAGS PASSION FLOWER

G A R GRID MAKER  
S A V ABIGALE 0451  
DHVO DEUCE 132R  
EXLR MOLLY 7103K  
GPF F BLAQUE RULON  
MAGS MANDA  
JCL LODESTAR 27L  
CANE RIDGE POLL ELLIE

EPDS **CE BW WW YW MA CM SC DC YG CW RE MS \$MI**  
9 2.1 65 94 25 6 0.9 6 -.10 29 .51 .18 57

LOT  
**29**

## CELL 6077D

2/23/2016 | HOMO Black (P1) | HOMO Polled (P1)  
LIM-FLEX(62/55.2) | CELL 6077D | LFM2105048

Act. BW .....78  
Adj. WW .....749

AHCC WESTWIND W544  
**AHCC ZERO DESIGN Z838**  
AHCC MISS PRECISION U838  
DHVO DEUCE 132R  
**PBRS ZOLA 152Z**  
BUFORD ERISKAY 9118

KAJO RESPONDER 120R  
AHCC MISS WULF HUNT R544  
COLEMAN PRODUCTION 608  
HC DYNASTY 638  
GPF F BLAQUE RULON  
AMY JO DHAN 20L  
B C MARATHON 7022  
J BAR 7 LADY ERISKAY 5559

EPDS **CE BW WW YW MA CM SC DC YG CW RE MS \$MI**  
8 0.6 71 112 21 6 0.9 15 -.07 38 .57 -.05 50

**DVAuction**  
Broadcasting Real-Time Auctions

Watch & Bid Online

[www.DVAuction.com](http://www.DVAuction.com)

For General Questions, Contact Our Office: (402) 316-5460 or support@dvauction.com

# SPRING YEARLING BULLS

LOT  
**30**

## CELL 6082D

2/26/2016 | HOMO Black (P1) | Het Polled (T)  
LIM-FLEX(62/55.2) | CELL 6082D | LFM2105168

Act. BW .....82  
Adj. WW .....730

AHCC WESTWIND W544  
**AHCC ZERO DESIGN Z838**  
AHCC MISS PRECISION U838  
DHVO DEUCE 132R  
**PBRs YOLANDA 277Z**  
TYE J ROYAL LASS

KAJO RESPONDER 120R  
AHCC MISS WULF HUNT R544  
COLEMAN PRODUCTION 608  
HC DYNASTY 638  
GPFF BLAQUE RULON  
AMY JO DHAN 20L  
MCC TRAVELER 234D WCC  
STEDEMS ROYAL LASS 303

EPDS	CE	BW	WW	YW	MA	CM	SC	DC	YG	CW	RE	MS	\$MI
	8	1.4	68	107	25	6	0.9	15	-.08	36	.66	-.08	48

LOT  
**31**

## CELL 6085D

3/1/2016 | HOMO Black (P1) | HOMO Polled (P2)  
LIM-FLEX(62/55.4) | CELL 6085D | LFM2105170

Act. BW .....92  
Adj. WW .....733

AHCC WESTWIND W544  
**AHCC ZERO DESIGN Z838**  
AHCC MISS PRECISION U838  
BR MIDLAND  
**MAGS Y NOW**  
MAGS ROMPER STOMPER

KAJO RESPONDER 120R  
AHCC MISS WULF HUNT R544  
COLEMAN PRODUCTION 608  
HC DYNASTY 638  
TWIN VALLEY PRECISIONE161  
BR ROYAL LASS 7036-19  
GPFF BLAQUE RULON  
EXLR 054H

EPDS	CE	BW	WW	YW	MA	CM	SC	DC	YG	CW	RE	MS	\$MI
	8	1.8	64	102	22	6	0.9	6	-.13	34	.49	0	51

LOT  
**32**

## CELL 6087D

3/1/2016 | Black | HOMO Polled (T)  
PUREBRED(87/79.4) | CJSL 6087D | NPM2105184

Act. BW .....82  
Adj. WW .....728

AHCC XPENSE ACCOUNT X516  
**COLE ABSOLUTE 05A**  
COLE MISS TRAVELER 029X  
EXLR LIMITED EDITION 765J  
**EF RAGDOLL 238R**  
EXLR 231J

KAJO RESPONDER 120R  
AHCC MISS NORHTSTAR R516  
COLEMAN TRAVELER 797  
COLE 91L  
EXLR POLLED BENCHMARK709G  
WULFS GLENDA 7021G  
WULFS GUARDIAN 5074G  
EXLR LUVLY 081F

EPDS	CE	BW	WW	YW	MA	CM	SC	DC	YG	CW	RE	MS	\$MI
	8	1.9	70	118	29	6	.6	14	-.13	43	.92	-.26	43

LOT  
**33**

## CELL 6100D

3/2/2016 | HOMO Black (T) | DBL Polled  
LIM-FLEX(75/66.4) | CELL 6100D | LFM2105190

Act. BW .....88  
Adj. WW .....724

AHCC XPENSE ACCOUNT X516  
**COLE ABSOLUTE 05A**  
COLE MISS TRAVELER 029X  
CLLL HAHK THE APPRENTICE  
**HAHK 431X**  
DJ TEMPTING DEAL

KAJO RESPONDER 120R  
AHCC MISS NORHTSTAR R516  
COLEMAN TRAVELER 797  
COLE 91L  
MNWS FRONTIER 507R  
GPFF ALLIE  
MYTTY IN FOCUS  
MAGS NO BIG DEAL

EPDS	CE	BW	WW	YW	MA	CM	SC	DC	YG	CW	RE	MS	\$MI
	4	3.1	76	125	24	2	1.0	12	-.05	49	.92	.00	54

LOT  
**34**

## CJSL 6113D ET

3/3/2016 | Het Black (T) | HOMO Polled (P1)  
LIM-FLEX(50/44.8) | CJSL 6113D | LFM2106158

Act. BW .....84  
Adj. WW .....744

GAMBLES HOT ROD  
**SILVEIRAS STYLE 9303**  
SILVEIRAS ELBA 2520  
DHVO DEUCE 132R  
**MAGS WASSAIL**  
MAGS MANDA

FAMOUS 7001  
CHAMPION HILL LADY 703  
TWIN VALLEY PRECISIONE161  
D A R ELBA 55  
GPFF BLAQUE RULON  
AMY JO DHAN 20L  
EXLR DAKOTA 353G  
MAGS JEWEL

EPDS	CE	BW	WW	YW	MA	CM	SC	DC	YG	CW	RE	MS	\$MI
	11	0.9	58	84	23	9	1.0	17	.00	22	.15	.38	61

LOT  
**35**

## CELL 6117D ET

3/4/2016 | Het Black (T) | HOMO Polled (T)  
LIM-FLEX(50/44.9) | CELL 6117D | LFM2106140

Act. BW .....77  
Adj. WW .....706

GAMBLES HOT ROD  
**SILVEIRAS STYLE 9303**  
SILVEIRAS ELBA 2520  
GPFF BLAQUE RULON  
**MAGS SHEILA**  
MAGS MANDA

FAMOUS 7001  
CHAMPION HILL LADY 703  
TWIN VALLEY PRECISIONE161  
D A R ELBA 55  
BLACK DIAMOND  
QUAIL RUN RAMONA BP  
EXLR DAKOTA 353G  
MAGS JEWEL

EPDS	CE	BW	WW	YW	MA	CM	SC	DC	YG	CW	RE	MS	\$MI
	11	-0.3	51	80	25	10	0.9	13	-.08	18	.35	.36	59

LOT  
**36**

## CELL 6128D ET

3/6/2016 | Het Black (T) | Het Polled (T)  
LIM-FLEX(50/44.9) | CELL 6128D | LFM2106143

Act. BW .....81  
Adj. WW .....659

GAMBLES HOT ROD  
**SILVEIRAS STYLE 9303**  
SILVEIRAS ELBA 2520  
GPFF BLAQUE RULON  
**MAGS SHEILA**  
MAGS MANDA

FAMOUS 7001  
CHAMPION HILL LADY 703  
TWIN VALLEY PRECISIONE161  
D A R ELBA 55  
BLACK DIAMOND  
QUAIL RUN RAMONA BP  
EXLR DAKOTA 353G  
MAGS JEWEL

EPDS	CE	BW	WW	YW	MA	CM	SC	DC	YG	CW	RE	MS	\$MI
	11	0.2	46	80	25	10	0.9	13	-.08	18	.35	.36	58

LOT  
**37**

## CELL 6283D ET

3/7/2016 | Black | Het Polled (T)  
LIM-FLEX(43/40.6) | CELL 6283D | LFM2106735

Act. BW .....90  
Adj. WW .....763

NORTHERN IMPROVEMENT 4480  
**GAMBLES SAFE BET**  
GAMBLES LADY 961  
EXLR MODERATOR 053M  
**SENNETT HEATHER 448P**  
SENNETT CINNAMON 802H

TC STOCKMAN 365  
BLACKCAP OF RR 5367  
FAMOUS 7001  
CHAMPION HILL LADY 703  
EXLR JUDO 459J  
EXLR EMPRESS 502K  
WULFS QUARTERBACK 4222B  
OAKM LADY STARSO 965C

EPDS	CE	BW	WW	YW	MA	CM	SC	DC	YG	CW	RE	MS	\$MI
	10	1.8	65	92	27	7	0.7	9	-.14	26	.41	.18	57

# SPRING YEARLING BULLS

LOT  
**38**

## CJSL 6137D

3/8/2016 | Het Black (T) | HOMO Polled (T)  
LIM-FLEX(75/67.2) | CJSL 6137D | LFM2105316

Act. BW.....90  
Adj. WW.....810

S A V BISMARCK 5682  
**CELL3211A**  
AUTO TOOTSIE POP 2272T  
MAGS SAVAGE  
**MAGS XPEDIA**  
CFDV REAL HOT 500OR

G A R GRID MAKER  
S A V ABIGALE 0451  
DHVO DEUCE 132R  
EXLR MOLLY 7103K  
GPFF BLAQUE RULON  
MAGS MANDA  
CARROUSELS NASDAQ  
AUTO KATIE 0846K

EPDS **CE BW WW YW MA CM SC DC YG CW RE MS \$MI**  
5 3.7 73 104 27 6 1.0 4 -.14 37 .60 .11 57

LOT  
**39**

## CJSL 6138D ET

3/8/2016 | HOMO Black (P1) | Het Polled (T)  
PUREBRED(100/89.3) | CJSL 6138D | NPM2106132

Act. BW.....75  
Adj. WW.....853

GPFF BLAQUE RULON  
**DHVO DEUCE 132R**  
AMY JO DHAN 20L  
JCL LODESTAR 27L  
**AUTO CARMINDA 656S**  
AUTO CARMINDA 872P

BLACK DIAMOND  
QUAIL RUN RAMONA BP  
BLACK CAT DHAN 152G  
GPFF AMBER JO  
HUNTS HI-LITER 245G  
LOGAN'S CHEERLEADER 280G  
AUTO BLACK DAKOTA 129J  
AUTO JULIA 247J

EPDS **CE BW WW YW MA CM SC DC YG CW RE MS \$MI**  
6 0.8 84 117 24 4 1.0 21 -.07 43 .33 -.17 50

LOT  
**40**

## CJSL 6145D ET

3/8/2016 | HOMO Black (P1) | HOMO Polled (P1)  
PERCENTAGE(81/72.8) | CJSL 6145D | NXM2106149

Act. BW.....82  
Adj. WW.....837

LH WAR HERO 195W  
**MAGS ANCHOR**  
MGS XIPHOPAGOUS  
JCL LODESTAR 27L  
**AUTO CARMINDA 656S**  
AUTO CARMINDA 872P

JCL LODESTAR 27L  
VERMILION ERICA LADY 1229  
DHVO DEUCE 132R  
MAGS SALINA  
HUNTS HI-LITER 245G  
LOGAN'S CHEERLEADER 280G  
AUTO BLACK DAKOTA 129J  
AUTO JULIA 247J

EPDS **CE BW WW YW MA CM SC DC YG CW RE MS \$MI**  
8 1.2 83 120 20 6 0.9 15 .04 44 .17 .12 59

LOT  
**41**

## CELL 6140D ET

3/8/2016 | Het Black (T) | Het Polled (T)  
LIM-FLEX(50/44.9) | CELL 6140D | LFM2106128

Act. BW.....77  
Adj. WW.....692

GAMBLES HOT ROD  
**SILVEIRAS STYLE 9303**  
SILVEIRAS ELBA 2520  
GPFF BLAQUE RULON  
**MAGS SHEILA**  
MAGS MANDA

FAMOUS 7001  
CHAMPION HILL LADY 703  
TWIN VALLEY PRECISIONE161  
D A R ELBA 55  
BLACK DIAMOND  
QUAIL RUN RAMONA BP  
EXLR DAKOTA 353G  
MAGS JEWEL

EPDS **CE BW WW YW MA CM SC DC YG CW RE MS \$MI**  
11 -0.3 49 80 25 10 0.9 13 -.08 18 .35 .36 59

LOT  
**42**

## CJSL 6136D

3/8/2016 | HOMO Black (T) | Het Polled (T)  
LIM-FLEX(75/64.7) | CJSL 6136D | LFM2105315

Act. BW.....80  
Adj. WW.....721

AHCC WESTWIND W544  
**AHCC BARN BURNER B907**  
LVLS 9066U  
DHVO DEUCE 132R  
**ATAK ZIZZLE**  
H MAN GRID MAKER 5067

KAJO RESPONDER 120R  
AHCC MISS WULF HUNT R544  
LVLS FARMER JOHN 7428P  
LVLS9066R  
GPFF BLAQUE RULON  
AMY JO DHAN 20L  
G A R GRID MAKER  
PLEASANT ERICA 8249

EPDS **CE BW WW YW MA CM SC DC YG CW RE MS \$MI**  
6 1.5 67 100 22 6 1.1 15 -.09 31 .37 -.06 49

LOT  
**43**

## CJSL 6146D ET

3/9/2016 | Red/Wht | HOMO Polled (T)  
PUREBRED(100/89.3) | CJSL 6146D | NPM2106159

Act. BW.....89  
Adj. WW.....845

GPFF BLAQUE RULON  
**DHVO DEUCE 132R**  
AMY JO DHAN 20L  
JCL LODESTAR 27L  
**AUTO CARMINDA 656S**  
AUTO CARMINDA 872P

BLACK DIAMOND  
QUAIL RUN RAMONA BP  
BLACK CAT DHAN 152G  
GPFF AMBER JO  
HUNTS HI-LITER 245G  
LOGAN'S CHEERLEADER 280G  
AUTO BLACK DAKOTA 129J  
AUTO JULIA 247J

EPDS **CE BW WW YW MA CM SC DC YG CW RE MS \$MI**  
6 2.6 83 117 24 4 1.0 21 -.07 43 .33 -.17 49

LOT  
**44**

## CJSL 6150D

3/10/2016 | HOMO Black (T) | Het Polled (T)  
PUREBRED(87/79.3) | CJSL 6150D | NPM2105317

Act. BW.....92  
Adj. WW.....659

AHCC XPENSE ACCOUNT X516  
**COLE ABSOLUTE 05A**  
COLE MISS TRAVELER 029X  
TNUH BLUE PRINT 245H  
**MAGS TIZZY**  
MAGS FRUITFUL 487M

KAJO RESPONDER 120R  
AHCC MISS NORHTSTAR R516  
COLEMAN TRAVELER 797  
COLE 91L  
WADDLES COBALT 3106  
TNUH MISS C245  
EXLR LIMITED EDITION 765J  
WULFS FRUITFUL 6052F

EPDS **CE BW WW YW MA CM SC DC YG CW RE MS \$MI**  
6 3.6 72 118 28 5 0.8 13 -.05 46 .95 -.15 47

LOT  
**45**

## CELL 6154D ET

3/10/2016 | DBL Black | Het Polled (T)  
LIM-FLEX(50/44.9) | CELL 6154D | LFM2106136

Act. BW.....82  
Adj. WW.....660

GAMBLES HOT ROD  
**SILVEIRAS STYLE 9303**  
SILVEIRAS ELBA 2520  
GPFF BLAQUE RULON  
**MAGS SHEILA**  
MAGS MANDA

FAMOUS 7001  
CHAMPION HILL LADY 703  
TWIN VALLEY PRECISIONE161  
D A R ELBA 55  
BLACK DIAMOND  
QUAIL RUN RAMONA BP  
EXLR DAKOTA 353G  
MAGS JEWEL

EPDS **CE BW WW YW MA CM SC DC YG CW RE MS \$MI**  
11 0.4 46 80 25 10 0.9 13 -.08 18 .35 .36 58

# SPRING YEARLING BULLS

LOT  
**46**

## CJSL 6153D ET

3/10/2016 | HOMO Black (T) | Het Polled (T)  
PUREBRED(93/84.6) | CJSL 6153D | NPM2106126

Act. BW .....82  
Adj. WW .....638

MAGS THE GENERAL  
**AUTO CRUZE 132X**  
AUTO REBECA 292S  
TNUH BLUE PRINT 245H  
**MAGS TIZZY**  
MAGS FRUITFUL 487M

AUTO DOLLAR GENERAL 122R  
EXLR LUVLY 821M  
LESF ASPHALT 9N  
EXLR REBECA 1019P  
WADDLES COBALT 3106  
TNUH MISS C245  
EXLR LIMITED EDITION 765J  
WULFS FRUITFUL 6052F

EPDS **CE BW WW YW MA CM SC DC YG CW RE MS \$MI**  
10 0.4 58 96 29 10 0.2 16 -.09 27 .34 -.10 45

LOT  
**47**

## CELL 6157D

3/11/2016 | HOMO Black (T) | Het Polled (T)  
LIM-FLEX(50/44.8) | CELL 6157D | LFM2105321

Act. BW .....84  
Adj. WW .....678

TOPLINE VISION FLY OVER  
**EF BLAST ZONE 507B**  
EF UPTOWN GIRL  
EXAR CLASSEN 1422B  
**AUTO CLASSY 272B**  
MAGS MANUELA

SILVEIRAS STYLE 9303  
TOP LINE ELLIE 0635  
EF MAIN STAY 541M  
MAGS SHEILA  
DAMERON FIRST CLASS  
EXAR PRINCESS 2006  
EXLR LIMITED EDITION 765J  
AUTO CITY NIGHTS 214H

EPDS **CE BW WW YW MA CM SC DC YG CW RE MS \$MI**  
8 2.9 57 91 27 8 - - -.03 29 .35 .51 66

LOT  
**48**

## CJSL 6166D

3/13/2016 | Het Black (T) | Het Polled (T)  
LIM-FLEX(62/55.4) | CJSL 6166D | LFM2105335

Act. BW .....86  
Adj. WW .....813

RITO 112 OF 2536 RITO 616  
**MAGS XUKALANI**  
MAGS UKALANI  
COLE MAGNUM 15M  
**RJFL ROXY 501R**  
PLND FANTASY 146G

RITO 616 OF 4B20 6807  
G A R PRECISION 2536  
BASIN FRANCHISE P142  
CARROUSELS PINA COLADA  
ANDERS JAG  
COLE 8117H  
WULF'S POLLED PROGRESS  
CANDYCANE 54Y

EPDS **CE BW WW YW MA CM SC DC YG CW RE MS \$MI**  
10 2.0 72 107 16 10 0.9 1 -.14 36 .43 .14 58

LOT  
**49**

## CJSL 6180D ET

3/16/2016 | HOMO Black (P1) | Het Polled (T)  
PUREBRED(100/89.3) | CJSL 6180D | NPM2106153

Act. BW .....93  
Adj. WW .....863

GPFF BLAQUE RULON  
**DHVO DEUCE 132R**  
AMY JO DHAN 20L  
JCL LODESTAR 27L  
**AUTO CARMINDA 656S**  
AUTO CARMINDA 872P

BLACK DIAMOND  
QUAIL RUN RAMONA BP  
BLACK CAT DHAN 152G  
GPFF AMBER JO  
HUNTS HI-LITER 245G  
LOGAN'S CHEERLEADER 280G  
AUTO BLACK DAKOTA 129J  
AUTO JULIA 247J

EPDS **CE BW WW YW MA CM SC DC YG CW RE MS \$MI**  
6 2.3 76 117 24 4 1.0 21 -.07 43 .33 -.17 47

LOT  
**50**

## CJSL 6186D

3/21/2016 | HOMO Black (T) | Het Polled (T)  
PUREBRED(87/74.9) | CJSL 6186D | NPM2105349

Act. BW .....90  
Adj. WW .....782

AHCC WESTWIND W544  
**AHCC BARN BURNER B907**  
LVLS 9066U  
LVLS SECRET WEAPON 4408K  
**CVR YANCEY 4634Y**  
PBRs SANDY 611OS

KAJO RESPONDER 120R  
AHCC MISS WULF HUNT R544  
LVLS FARMER JOHN 7428P  
LVLS9066R  
LVLS FARMER 4G  
LVLS 408H  
EF MAIN STAY 541M  
BT MINA 288M

EPDS **CE BW WW YW MA CM SC DC YG CW RE MS \$MI**  
4 2.9 66 101 32 7 0.8 18 .02 34 .07 -.10 46

LOT  
**51**

## CJSL 6187D

3/21/2016 | HOMO Black (T) | Het Polled (T)  
PUREBRED(87/78.3) | CJSL 6187D | NPM2105374

Act. BW .....86  
Adj. WW .....765

AHCC XPENSE ACCOUNT X516  
**COLE ABSOLUTE 05A**  
COLE MISS TRAVELER 029X  
KAJO RESPONDER 120R  
**AHCC XHIBIT THIS X045**  
AHCC MISS WULF HUNT R544

KAJO RESPONDER 120R  
AHCC MISS NORHTSTAR R516  
COLEMAN TRAVELER 797  
COLE 91L  
JCL LODESTAR 27L  
KAJO SHERYL SWOOPS 11H  
COLE WULF HUNT  
AHCC MISS OUTCROSS N844

EPDS **CE BW WW YW MA CM SC DC YG CW RE MS \$MI**  
4 2.5 81 140 29 5 0.9 5 .05 58 .74 .02 55

LOT  
**52**

## CELL 6200D

3/29/2016 | HOMO Black (T) | HOMO Polled (T)  
LIM-FLEX(37/33.3) | CJSL 6200D | LFM2105359

Act. BW .....80  
Adj. WW .....816

RITO 112 OF 2536 RITO 616  
**MAGS XUKALANI**  
MAGS UKALANI  
S A V MANDAN 5664  
**MAGS XYLOGEN**  
MAGS GRETCHEN 855M

RITO 616 OF 4B20 6807  
G A R PRECISION 2536  
BASIN FRANCHISE P142  
CARROUSELS PINA COLADA  
S A V 8180 TRAVELER 004  
S A V ABIGALE 0451  
MAGS JUMANJI  
MAGS GRETCHEN

EPDS **CE BW WW YW MA CM SC DC YG CW RE MS \$MI**  
9 0.8 65 107 26 8 1.7 1 .01 35 .47 .72 76

LOT  
**53**

## CELL 6207D

4/4/2016 | HOMO Black (T) | DBL Polled  
LIM-FLEX(68/60.7) | CELL 6207D | LFM2105363

Act. BW .....75  
Adj. WW .....739

AHCC WESTWIND W544  
**AHCC ZERO DESIGN Z838**  
AHCC MISS PRECISION U838  
DHVO DEUCE 132R  
**MAGS YVETTE**  
MAGS UMBELLULE

KAJO RESPONDER 120R  
AHCC MISS WULF HUNT R544  
COLEMAN PRODUCTION 608  
HC DYNASTY 638  
GPFF BLAQUE RULON  
AMY JO DHAN 20L  
G A R PREDESTINED  
MAGS 13M

EPDS **CE BW WW YW MA CM SC DC YG CW RE MS \$MI**  
8 0.9 71 108 25 7 1.2 15 -.09 35 .53 -.01 52



## LOTS 54A-77

We are equally proud of this group of stout, well-developed fall yearling bulls. Rest assured, these are not the “left-overs” or the “picked-throughs.” They represent many of the same cow families and sire groups as our spring bulls. We developed these bulls with longevity in mind and as such, feel comfortable they will hold up under tough conditions while providing you years of trouble-free service. As always, we welcome your questions and concerns and in the event a problem arises when you get your bulls home, we hope we will be the first call you make.

# FALL BULLS



**LOT 54A**

LOT  
**54A**

## CELL 5721C ET

9/30/2015 | Red | HOMO Polled (P1)  
LIM-FLEX(37/33.8) | CELL 5721C | LFM2098543

Act. BW .....76  
Adj. WW.....691  
Adj. YW .....1,361  
Adj. REA.....18.02  
Adj. IMF.....2.55  
Adj. SC.....377

LJC MISSION STATEMENT P27  
**SILVEIRAS MISSION NEXUS 1378**  
SILVEIRAS DAORV 8399  
DHVO DEUCE 132R  
**MAGS XUZETTE**  
MAGS SUZETTE

LJC LANCER 806  
LJC HANNAH 106  
TROTTERS ROMEO 412  
MOORE'S DAORV 5365  
GPFF BLAQUE RULON  
AMY JO DHAN 20L  
BR MIDLAND  
ANLC MAGGIE MAY 2112M

EPDS	CE	BW	WW	YW	MA	CM	SC	DC	YG	CW	RE	MS	\$MI
	12	-0.3	79	125	25	4	1.5	-	-0.09	42	.80	.18	61

A real meat wagon who promises to push the growth curve forward at a rapid pace. We really like our Nexus calves and this homozygous polled individual is no exception. Very modest birth, high levels of growth and a ribeye in the top 10% ensures he covers all the bases. To take it one step further, this big-bodied, heavy-muscled, sound-structured individual charted a user-friendly 76 pounds of birth and scanned a ribeye area of 18 square inches. Bid with confidence March 4.

# FALL BULLS



**LOT 54B**



**LOT 54C**

**LOT 54B**

**CELL 5710C ET**

10/16/2015 | Red | HOMO Polled (P1)  
LIM-FLEX(37/33.8) | CELL 5710C | LFM2103331

Act. BW .....76  
Adj. WW .....775  
Adj. YW .....1,479  
Adj. REA .....18.64  
Adj. IMF .....2.79  
Adj. SC .....39.5

LJC MISSION STATEMENT P27  
**SILVEIRAS MISSION NEXUS 1378**  
SILVEIRAS DAORV 8399  
DHVO DEUCE 132R  
**MAGS XUZETTE**  
MAGS SUZETTE

LJC LANCER 806  
LJC HANNAH 106  
TROTTERS ROMEO 412  
MOORE'S DAORV 5365  
GPFF BLAQUE RULON  
AMY JO DHAN 20L  
BR MIDLAND  
ANLC MAGGIE MAY 2112M

EPDS	CE	BW	WW	YW	MA	CM	SC	DC	YG	CW	RE	MS	\$MI
	12	-0.3	86	134	25	4	1.7	-	-.11	42	.85	.21	65

Study the the unique EPD profile of this homozygous polled son of Nexus and full brother to Lots 54A and 54C. This luncker features a weaning weight EPD in the top 2%, a yearling and scrotal figure in the top 1%, and from a carcass merit standpoint, he ranks in the top 20% or better for Carcass Weight, Ribeye, Marbling and \$MTI. He also posted actual performance figures that are every bit as impressive. A big-league, herd-sire prospect if there ever was one.

**LOT 54C**

**CELL 5727C ET**

9/28/2015 | Red | HOMO Polled (P1)  
LIM-FLEX(37/33.8) | CELL 5727C | LFM2098541

Act. BW .....76  
Adj. WW .....673  
Adj. YW .....1,329  
Adj. REA .....14.78  
Adj. IMF .....2.7  
Adj. SC .....37.7

LJC MISSION STATEMENT P27  
**SILVEIRAS MISSION NEXUS 1378**  
SILVEIRAS DAORV 8399  
DHVO DEUCE 132R  
**MAGS XUZETTE**  
MAGS SUZETTE

LJC LANCER 806  
LJC HANNAH 106  
TROTTERS ROMEO 412  
MOORE'S DAORV 5365  
GPFF BLAQUE RULON  
AMY JO DHAN 20L  
BR MIDLAND  
ANLC MAGGIE MAY 2112M

EPDS	CE	BW	WW	YW	MA	CM	SC	DC	YG	CW	RE	MS	\$MI
	12	-0.3	77	122	25	4	1.5	-	.01	42	.52	.21	61

A mating made in heaven. Volumes could be written about the genetic combination of Nexus and the ever-popular MAGS Xuzette as evidence by this individual and his two flushmates, Lots 54A and 54B. This big-bellied, homozygous polled herd-sire prospect puts it all together in spades. Anchored by impressive calving-ease, weaning, yearling and scrotal figures he combines a legendary pedigree and a phenotype any discriminating cattlemen could appreciate.

# FALL BULLS



LOT 55

LOT  
**55**

## CELL 5658C

9/14/2015 | HOMO Black (P1) | HOMO Polled (T)  
LIM-FLEX(50/45.2) | CELL 5658C | LFM2093713

Act. BW .....70  
Adj. WW .....798  
Adj. YW .....1.284  
Adj. REA .....16.7  
Adj. IMF .....1.24  
Adj. SC .....32.5

TC ABERDEEN 759  
**EBFL YPSILANTI 420Y**  
MAGS RAMADA  
EXAR UPSHOT 0562B  
**LSTO ANGEL 3853A**  
SBLX XTRA SPECIAL

C R A BEXTOR 872 5205 608  
TC BLACKBIRD 4034  
TNUH BLUE PRINT 245H  
MAGS MANDA  
SITZ UPWARD 307R  
EXAR BARBARA T020  
DHVO DEUCE 132R  
MAGS MANUELA

EPDS	CE	BW	WW	YW	MA	CM	SC	DC	YG	CW	RE	MS	\$MI
	10	1.4	80	116	29	7	0.7	11	-.25	40	1.04	.08	59

EBFL Ypsilanti 420Y continues to be a go to bull for cattle that are not only eye appealing, but high performing. This double homozygous son of Ypsilanti has the added benefit of being out of a high-powered cow that traces back to the legendary MAGS Manuela cow family and hails from the esteemed Stowers Limousin program. As an added bonus, he delivers both impressive calving-ease and growth, plus he ranks in the top 1% for Ribeye Area.



# FALL BULLS



LOT 56



LOT 57



## CELL 5695C ET

9/1/2015 | Het Black (T) | HOMO Polled (P2)  
LIM-FLEX(50/44.7) | CELL 5695C | LFM2094919

Act. BW.....86  
Adj. WW.....840  
Adj. YW.....1,385  
Adj. REA.....15.44  
Adj. IMF.....1.77  
Adj. SC.....39.5

EXAR UPSHOT 0562B  
**EXAR DENVER 2002B**  
EXAR ROYAL LASS 1067  
KAJO RESPONDER 120R  
**MAGS TEASPOON**  
MAGS PUFF

SITZ UPWARD 307R  
EXAR BARBARA T020  
EXAR 263C  
BR ROYAL LASS 19-132  
JCL LODESTAR 27L  
KAJO SHERYL SWOOPS 11H  
MAGS KAPTAIN AMERICA  
AUTO CITY NIGHTS 214H

EPDS **CE BW WW YW MA CM SC DC YG CW RE MS \$MI**  
11 1.3 82 119 29 8 1.5 17 .05 33 .69 .28 64

Any chance you could use a bull who weaned at nearly 850-lbs., posted a 1,385-lb. yearling weight with nearly 40 cm. testicles? Not to mention, he is homozygous polled and by one of the most highly used Angus A.I. sires in recent years, EXAR Denver, and out of the tremendous donor, MAGS Teaspoon. Performance combined with eye appeal never goes out of style.



## CELL 5636C

10/13/2015 | HOMO Black (P1) | HOMO Polled (P1)  
LIM-FLEX(56/50.1) | CELL 5636C | LFM2093688

Act. BW.....88  
Adj. WW.....743  
Adj. YW.....1,345  
Adj. REA.....14.88  
Adj. IMF.....3.92  
Adj. SC.....36.4

LH WAR HERO 195W  
**MAGS ANCHOR**  
MGS XIPHOPAGOUS  
BOHI TOP DOLLAR 7144T  
**MAGS ZONDRYA**  
CABIN CREEK EVERGREEN8015

JCL LODESTAR 27L  
VERMILION ERICA LADY 1229  
DHVO DEUCE 132R  
MAGS SALINA  
AUTO DOLLAR GENERAL 122R  
CARROUSELS PINA COLADA  
S A V 8180 TRAVELER 004  
CABIN CREEK EVERGREEN5096

EPDS **CE BW WW YW MA CM SC DC YG CW RE MS \$MI**  
6 3.0 86 128 20 8 1.2 13 .30 50 .23 .48 71

Check out the mass, body and power of this double homozygous Anchor son who traces back the great Carrouseles Pina Colada, one of the most noted donors in the history of our breed. He is destined to be an all-star with his top 2% Weaning and Yearling Weight EPDs, and a Marbling figure that ranks in the top 5%. His genetic predictions indicate his progeny will not only grow, but marble.

# FALL BULLS



LOT 58



LOT 59



## CELL 5694C ET

9/1/2015 | HOMO Black (P2) | HOMO Polled (P3)  
LIM-FLEX(50/44.5) | CELL 5694C | LFM2100780

Act. BW .....72  
Adj. WW .....760  
Adj. YW .....1,372  
Adj. REA .....18.04  
Adj. IMF .....1.41  
Adj. SC .....37.5

TC ABERDEEN 759  
**MAGS Y-AXIS**  
MAGS UAHUKA  
LH RODEMASTER 338R  
**MAGS UNBELIEVABLE WISH**  
MAGS SIMPLE WISH

C R A BEXTOR 872 5205 608  
TC BLACKBIRD 4034  
DHVO DEUCE 132R  
CARROUSELS PINA COLADA  
JCL LODESTAR 27L  
VERMILION E BLACKBIRD9546  
GPFF BLAQUE RULON  
TWIN EAGLESBEMINDMAID638K

EPDS	CE	BW	WW	YW	MA	CM	SC	DC	YG	CW	RE	MS	\$MI
	13	0.0	78	119	27	7	1.2	23	-.43	37	.92	.05	59

Y-Axis continues to rank among the breed's best when it comes to siring eye appeal, muscle and all-around good cattle. This double homozygous powerhouse is out of the great Unbelievable Wish cow who has proven herself time and again. He posted top 10% Calving-Ease, Weaning, Yearling and Scrotal. Plus, 5694 scanned an impressive 18 square inch ribeye. Make no mistake, put him on your short list sale day.



## CELL 5702C ET

9/1/2015 | Het Black (T) | HOMO Polled (P1)  
LIM-FLEX(62/55) | CELL 5702C | LFM2095573

Act. BW .....82  
Adj. WW .....792  
Adj. YW .....1,328  
Adj. REA .....14.64  
Adj. IMF .....3.28  
Adj. SC .....37.5

S A V PIONEER 7301  
**TMCK ALFALFA 35X**  
TMCK JOYCE 570U  
DHVO DEUCE 132R  
**MAGS ZEES**  
MAGS SAUNTER

SAV FINAL ANSWER 0035  
S A V BLACKBIRD 5297  
EXLR NEW GENERATION 037R  
LESF 5324R  
GPFF BLAQUE RULON  
AMY JO DHAN 20L  
BR MIDLAND  
MAGS LADY ACE

EPDS	CE	BW	WW	YW	MA	CM	SC	DC	YG	CW	RE	MS	\$MI
	9	0.7	87	120	22	8	1.2	3	.15	37	.54	.25	64

Study this bull from every angle. Homozygous polled, sired by Alfalfa, Deuce on the bottom side, what's not to like? What's more, he posted a 1,328 pound yearling weight, 37.5 scrotal, 3.2 UIMF and from an EPD standpoint, he ranks in the top 1% Weaning Weight. Don't miss this stout, powerhouse sale day.

# FALL BULLS



LOT 60



LOT 61



## CELL 5683C

9/22/2015 | HOMO Black (P1) | Het Polled (T)  
LIM-FLEX(68/61.5) | CELL 5683C | LFM2093735

Act. BW.....78  
Adj. WW.....729  
Adj. YW.....1,300  
Adj. REA.....13.86  
Adj. IMF.....2.56  
Adj. SC.....36.9

MAGS THE GENERAL  
**MAGS YIP**  
AUTO CARMINDA 656S  
EXAR UPSHOT 0562B  
**MAGS ANNIE**  
MAGS XEROMAS

AUTO DOLLAR GENERAL 122R  
EXLR LUVLY 821M  
JCL LODESTAR 27L  
AUTO CARMINDA 872P  
SITZ UPWARD 307R  
EXAR BARBARA TO20  
DHVO DEUCE 132R  
BOHI RHONDA 314R



## CELL 5624C

9/29/2015 | HOMO Black (P2) | HOMO Polled (T)  
LIM-FLEX(68/61.7) | CELL 5624C | LFM2093677

Act. BW.....86  
Adj. WW.....707  
Adj. YW.....1,395  
Adj. REA.....16.6  
Adj. IMF.....2.07  
Adj. SC.....37.7

MAGS WINSTON  
**MAGS ZODIAC**  
MAGS XANTHOS  
DHVO DEUCE 132R  
**MAGS YAKITEYAK**  
MAGS TEMPER

BT CROSSOVER 758N  
MAGS STRAWBERRY  
DHVO DEUCE 132R  
BOHI RHONDA 314R  
GPFf BLAQUE RULON  
AMY JO DHAN 20L  
JCL LODESTAR 27L  
HA LADY 1079

EPDS **CE BW WW YW MA CM SC DC YG CW RE MS \$MI**  
10 1.8 76 122 25 7 0.9 9 .13 46 .15 .46 69

Take a look at this long-spined, square-hipped, rugged, big-footed, homozygous black herd-sire prospect. He combines a distinct birth weight advantage posting a user-friendly 78-pound birth with top 10% or better Yearling Weight and Marbling. Think of all the scenarios where you could use a truly outstanding 68% Lim-Flex bull with a unique pedigree twist.

LINHART LIMOUSIN BUSINESS DONE RIGHT BULL SALE

EPDS **CE BW WW YW MA CM SC DC YG CW RE MS \$MI**  
9 2.6 88 149 21 8 1.2 19 -.05 62 .60 .07 60

MAGS Zodiac continues to impress us with his ability to sire the right kind. When mated with a sound-structured, moderate, low maintenance cow, the result was this double homozygous, square-hipped, big-middled, attractive individual. He maintains a modest actual birth weight, while pushing the envelope and ranking in the top 1% for both Weaning and Yearling performance. This is one big-time herd-sire prospect.

# FALL BULLS



LOT 62



LOT 63



## CELL 5404C ET

9/1/2015 | Black | HOMO Polled (T)  
LIM-FLEX(43/40.6) | CELL 5404C | LFM2094836

Act. BW .....76  
Adj. WW.....519  
Adj. YW.....1,256  
Adj. REA.....14.34  
Adj. IMF.....2.92  
Adj. SC.....34.5

RITO 707 OF IDEAL 3407 7075  
**S A V RESOURCE 1441**  
S A V BLACKCAP MAY 4136  
EXLR MODERATOR O53M  
**SENNETT HEATHER 448P**  
SENNETT CINNAMON 802H

R R RITO 707  
IDEAL 3407 OF 1418 076  
S A V 8180 TRAVELER 004  
S A V MAY 2397  
EXLR JUDO 459J  
EXLR EMPRESS 502K  
WULFS QUARTERBACK 4222B  
OAKM LADY STARSO 965C

EPDS	CE	BW	WW	YW	MA	CM	SC	DC	YG	CW	RE	MS	\$MI
	5	1.1	58	108	34	0	0.8	11	.10	42	.70	.14	52

One of the most influential females to ever grace our pastures is without question, Sennett Heather 448P. This Resource son proudly represents her storied heritage. Take a look at his length of body, extension through his front one-third and his muscle shape. From a growth and maternal standpoint, he is the real deal.



## CJSL 297C

9/23/2015 | HOMO Black (T) | HOMO Polled (T)  
LIM-FLEX(42/39.8) | TMCK 297C | LFM2095952

Act. BW .....89  
Adj. WW.....775  
Act. YW.....1,345  
Adj. REA.....15.48  
Adj. IMF.....3.94

S A V PIONEER 7301  
**TMCK HYDRAULIC 17Y**  
HSF WALL OF FAME  
MAGS WAZOWSKI  
**JEPS JEZABEL OSZ**  
EXLR JEZABEL O72W

SAV FINAL ANSWER 0035  
S A V BLACKBIRD 5297  
RPY PAYNES SIGNAL 6S  
HSF PENTHOUSE PIN-UP  
DHVO DEUCE 132R  
BOHI RED ROBIN 282R  
EXAR PRIME PREMIUM 6444  
EXLR JEZABEL 762S

EPDS	CE	BW	WW	YW	MA	CM	SC	DC	YG	CW	RE	MS	\$MI
	6	3.4	88	136	20	5	1.2	-	-.08	56	.54	.62	80

Study the breeding behind this visually impressive, double homozygous son of TMCK Hydraulic! His sire has proven to sire performance-oriented cattle and that is supported by a tremendous daughter by the widely popular and now deceased MAGS Wazowski A.I. sire on the bottom side. The result of this mating is this stout, wide-made lunger who projects to be a tremendous herd sire for years to come. "

LINHART LIMOUSIN BUSINESS DONE RIGHT BULL SALE

# FALL BULLS

LOT  
**64**

## CELL 5722C ET

9/1/2015 | HOMO Black (PI) | Het Polled (T)  
LIM-FLEX(50/44.9) | CELL 5722C | LFM2094888

Act. BW .....76  
Adj. WW .....723  
Adj. YW .....1,317  
Adj. REA .....14.64  
Adj. IMF .....2.81  
Adj. SC .....38.5

MAGS WINSTON

**MAGS ZODIAC**

MAGS XANTHOUS

GDAR GAME DAY 449

**MAGS XTRA ARROGANT**

MAGS U KNOW U WANT ME

BT CROSSOVER 758N  
MAGS STRAWBERRY  
DHVO DEUCE 132R  
BOHI RHONDA 314R  
BOYD NEW DAY 8005  
G D A R MISS WIX 474  
MAGS SAVAGE  
MAGS REBA

EPDS **CE BW WW YW MA CM SC DC YG CW RE MS \$MI**  
11 0.4 74 117 23 9 1.2 11 .07 39 .26 .36 65

LOT  
**65**

## CELL 5409C ET

9/1/2015 | Black | HOMO Polled (T)  
LIM-FLEX(75/66.8) | CELL 5409C | LFM2094850

Act. BW .....78  
Adj. WW .....574  
Adj. YW .....1,215  
Adj. REA .....16.84  
Adj. IMF .....2.48  
Adj. SC .....31.4

TC ABERDEEN 759

**MAGS Y-AXIS**

MAGS UAHUKA

AUTO BLACK DAKOTA 129J

**AHCC DAKOTA LUVLY R595**

EXLR 794H

C R A BEXTOR 872 5205 608  
TC BLACKBIRD 4034  
DHVO DEUCE 132R  
CARROUSELS PINA COLADA  
EXLR DAKOTA 353G  
DFLC JET SET BPC 34Y  
DBRO ZIPPER 113F  
AMBL LUVLY 340Y

EPDS **CE BW WW YW MA CM SC DC YG CW RE MS \$MI**  
6 2.1 63 107 38 9 0.3 25 -.42 44 1 -.17 46

LOT  
**66**

## CELL 5677C

9/5/2015 | HOMO Black (T) | DBL Polled  
LIM-FLEX(43/39.2) | CELL 5677C | LFM2093778

BOHI RED  
ROBIN 282R  
Act. BW .....62  
Adj. WW .....761  
Adj. YW .....1,378  
Adj. REA .....17.22

A A R TEN X 7008 S A

**EXAR EZX 3772B**

BASIN JOY 6278

MAGS THE GENERAL

**MAGS A WALKIN**

MAGS WALKIN

MYTTY IN FOCUS  
A A R LADY KELTON 5551

AUTO DOLLAR GENERAL 122R  
EXLR LUVLY 821M  
DHVO DEUCE 132R

EPDS **CE BW WW YW MA CM SC DC YG CW RE MS \$MI**  
Adj. IMF .....2.22

Adj. SC .....39.1  
16 -1.7 79 132 30 12 1.4 18 -.21 46 .87 .56 76

LOT  
**67**

## CELL 5464C ET

9/8/2015 | HOMO Black (T) | HOMO Polled (T)  
PERCENTAGE(81/75.6) | CELL 5464C | NXM2094826

Act. BW .....74  
Adj. WW .....525  
Adj. YW .....1,086  
Adj. REA .....15.08  
Adj. IMF .....2.57  
Adj. SC .....36.7

LH WAR HERO 195W

**MAGS ANCHOR**

MGS XIPHOPAGOUS

GPFF BLAQUE RULON

**MINE PLD PARTY GIRL 4197P**

MISS SYES REJUVINATOR 53M

JCL LODESTAR 27L  
VERMILION ERICA LADY 1229  
DHVO DEUCE 132R  
MAGS SALINA  
BLACK DIAMOND  
QUAIL RUN RAMONA BP  
EAFF REJUVENATOR 260J  
MISS SY PACMAN 56Y

EPDS **CE BW WW YW MA CM SC DC YG CW RE MS \$MI**  
5 0.8 61 83 16 6 1.1 4 -.26 29 .42 -.05 49

LOT  
**68**

## CJSL 5467C

9/8/2015 | HOMO Black (T) | HOMO Polled (T)  
LIM-FLEX(43/36.9) | CJSL 5467C | LFM2093844

Act. BW .....94  
Adj. WW .....633  
Adj. YW .....1,303  
Adj. REA .....14.78  
Adj. IMF .....3.21

RITO 112 OF 2536 RITO 616

**MAGS XUKALANI**

MAGS UKALANI

LVLS TOP CRITERIA 8862P

**LVLS MISS CRITERIA 2065X**

LVLS 2065U

RITO 616 OF 4B20 6807  
G A R PRECISION 2536  
BASIN FRANCHISE P142  
CARROUSELS PINA COLADA  
COLE WULF HUNT  
LVLS8862M  
RITO 616 OF 4B20 6807  
LVLS MISS OPTIMIZER 2065F

EPDS **CE BW WW YW MA CM SC DC YG CW RE MS \$MI**  
10 2.0 74 120 19 7 1.0 5 -.01 44 .42 .52 71

LOT  
**69**

## CELL 5476C ET

9/10/2015 | Black | HOMO Polled (T)  
PUREBRED(93/85.2) | CELL 5476C | NPM2094834

Act. BW .....86  
Adj. WW .....563  
Adj. YW .....1,212  
Adj. REA .....15.32  
Adj. IMF .....1.64  
Adj. SC .....34.8

GPFF BLAQUE RULON

**DHVO DEUCE 132R**

AMY JO DHAN 20L

EXLR MODERATOR 053M

**SENNETT HEATHER 448P**

SENNETT CINNAMON 802H

BLACK DIAMOND  
QUAIL RUN RAMONA BP  
BLACK CAT DHAN 152G  
GPFF AMBER JO  
EXLR JUDO 459J  
EXLR EMPRESS 502K  
WULFS QUARTERBACK 4222B  
OAKM LADY STARSO 965C

EPDS **CE BW WW YW MA CM SC DC YG CW RE MS \$MI**  
4 3.4 65 94 28 3 1.0 16 -.20 34 .41 -.42 36

*"We use Lim-Flex® bulls on our British-based cows because it allows us to achieve our goal of producing a high percentage of cattle that grade Choice, have higher yielding carcasses, while maintaining feed efficiency and uniformity."*

*-Erik Roen, Sierra Valley Ranch California*

Roen is a profit-minded cattleman who uses Lim-Flex bulls on his 2,000 head cow herd. Roen markets his calves through Superior Livestock Auction. One set of calves averaged 94% Choice or Prime, had greater than a 65% dressing percentage and returned \$117 per head of profit for the feeder.



# FALL BULLS

LOT  
**70**

## CELL 5486C

9/13/2015 | HOMO Black (T) | Het Polled (T)  
LIM-FLEX(62/53.6) | CELL 5486C | LFM2093853

Act. BW.....83	RITO 112 OF 2536 RITO 616	RITO 616 OF 4B20 6807
Adj. WW.....548	<b>MAGS XUKALANI</b>	G A R PRECISION 2536
Adj. YW.....1,147	MAGS UKALANI	BASIN FRANCHISE P142
Adj. REA.....14.48	EXLR EXCELLANTE 251L	CARROUSELS PINA COLADA
Adj. IMF.....2.25	<b>MINE PLD EXCEL 8060U</b>	EXLR POLLED RESOLVE 175G
Adj. SC.....36	CARROUSELS NEW APPEAL	EXLR 199H
		DVFC WARDEN 233K
		HSFM SHARON'S CHOICE 517J

EPDS	CE	BW	WW	YW	MA	CM	SC	DC	YG	CW	RE	MS	\$MI
	11	1.3	61	94	22	8	1.1	6	-.14	28	.16	.25	59

LOT  
**71**

## CELL 5648C

9/16/2015 | DBL Black | Het Polled (T)  
LIM-FLEX(50/44.9) | CELL 5648C | LFM2093700

Act. BW.....76	CONNEALY CONSENSUS 7229	CONNEALY CONSENSUS
Adj. WW.....632	<b>MAGS ACAPULCO</b>	BLUE LILLY OF CONANGA 16
Adj. YW.....1,240	EXLR LUVLY 821M	AUTO BLACK DAKOTA 129J
Adj. REA.....15.44	MAGS XYLOID	EXLR LUVLY 084F
Adj. IMF.....2.13	<b>MAGS ZESTY BERRIES</b>	DHVO DEUCE 132R
Adj. SC.....36.5	MAGS WILD BERRIES	BOHI RHONDA 314R
		BALDRIDGE RANGERRIDER R827
		BOHI RASBERRY 289R

EPDS	CE	BW	WW	YW	MA	CM	SC	DC	YG	CW	RE	MS	\$MI
	9	1.6	69	106	24	8	0.9	-	.15	35	.32	.54	69

LOT  
**72**

## CELL 5627C

9/22/2015 | DBL Black | HOMO Polled (P3)  
LIM-FLEX(50/44.9) | CELL 5627C | LFM2093812

Act. BW.....88	CONNEALY CONSENSUS 7229	CONNEALY CONSENSUS
Adj. WW.....593	<b>MAGS ACAPULCO</b>	BLUE LILLY OF CONANGA 16
Adj. YW.....1,207	EXLR LUVLY 821M	AUTO BLACK DAKOTA 129J
Adj. REA.....16.66	LH RODEMASTER 338R	EXLR LUVLY 084F
Adj. IMF.....1.21	<b>MAGS YES I WILL</b>	JCL LODESTAR 27L
Adj. SC.....32.4	MAGS TATTLER	VERMILION E BLACKBIRD9546
		GPFF BLAQUE RULON
		TWIN EAGLES BLACKCAP 138L

EPDS	CE	BW	WW	YW	MA	CM	SC	DC	YG	CW	RE	MS	\$MI
	5	3.0	69	108	23	6	0.2	16	.09	39	.58	.26	60

LOT  
**73**

## CJSL 300C ET

9/25/2015 | Het Black (T) | HOMO Polled (T)  
LIM-FLEX(61/55.7) | TMCK 300C | LFM2097941

Act. BW.....89	S A V PIONEER 7301	SAV FINAL ANSWER 0035
Adj. WW.....684	<b>TMCK HYDRAULIC 17Y</b>	S A V BLACKBIRD 5297
Adj. YW.....	HSF WALL OF FAME	RPY PAYNES SIGNAL 6S
Adj. REA.....16.12	DHVO DEUCE 132R	HSF PENTHOUSE PIN-UP
Adj. IMF.....3.17	<b>CEPB ZANGLE 107Z</b>	GPFF BLAQUE RULON
	MAGS UNTANGLE	AMY JO DHAN 20L
		MAGS SASQUATCH
		AUTO COOKIE CUTTER 295R

EPDS	CE	BW	WW	YW	MA	CM	SC	DC	YG	CW	RE	MS	\$MI
	5	4.2	81	129	21	4	1.2	14	.01	53	.66	.08	58

LOT  
**74**

## CJSL 304C

10/1/2015 | HOMO Black (P1) | HOMO Polled (P2)  
PERCENTAGE(77/70.7) | TMCK 304C | NXM2095953

Act. BW.....80	TMCK HYDRAULIC 17Y	S A V PIONEER 7301
Adj. WW.....693	<b>TMCK ARCHITECT 031A</b>	HSF WALL OF FAME
Act. YW.....1,370	TMCK LA VEDA 909Y	DHVO DEUCE 132R
Adj. REA.....18.34	AUTO DOLLAR GENERAL 122R	EXLR LA VEDA 1002P
Adj. IMF.....1.95	<b>DVFC NINA 239U</b>	LVLS SECRET WEAPON 4408K
	DVFC NINA 145N	AUTO KYRIA 232K
		DVFC WARDEN 233K
		EXLR LUVLY 081F

EPDS	CE	BW	WW	YW	MA	CM	SC	DC	YG	CW	RE	MS	\$MI
	9	0.6	79	123	31	9	0.8	14	-.14	44	.82	-.25	46

LOT  
**75**

## CJSL 5801C

10/5/2015 | DBL Black | DBL Polled  
LIM-FLEX(50/44.5) | TOMR 5801C | LFM2100032

Act. BW.....85	S A V BISMARCK 5682	G A R GRID MAKER
Adj. WW.....621	<b>CELL3211A</b>	S A V ABIGALE 0451
Adj. YW.....1,212	AUTO TOOTSIE POP 2272T	DHVO DEUCE 132R
Adj. REA.....13.32	MOHRFELD FREEDOM 412	EXLR MOLLY 7103K
Adj. IMF.....3.07	<b>TOMR 4T</b>	TC FREEDOM 104
Adj. SC.....38	TOMR 4R	TC PRIDE 8168
		EXLR MANPOWER 7324M
		SHWN MISS 4M

EPDS	CE	BW	WW	YW	MA	CM	SC	DC	YG	CW	RE	MS	\$MI
	9	1.1	62	96	26	8	1.2	-	-.11	29	.49	.13	54

LOT  
**76**

## CELL 5690C ET

10/13/2015 | HOMO Black (P1) | HOMO Polled (P1)  
PERCENTAGE(81/72.8) | CELL 5690C | NXM2094890

Act. BW.....84	LH WAR HERO 195W	JCL LODESTAR 27L
Adj. WW.....814	<b>MAGS ANCHOR</b>	VERMILION ERICA LADY 1229
Adj. YW.....1,296	MGS XIPHOPAGOUS	DHVO DEUCE 132R
Adj. REA.....15.08	JCL LODESTAR 27L	MAGS SALINA
Adj. IMF.....1.89	<b>AUTO CARMINDA 656S</b>	HUNTS HI-LITER 245G
Adj. SC.....38.4	AUTO CARMINDA 872P	LOGAN'S CHEERLEADER 280G
		AUTO BLACK DAKOTA 129J
		AUTO JULIA 247J

EPDS	CE	BW	WW	YW	MA	CM	SC	DC	YG	CW	RE	MS	\$MI
	8	2.0	90	125	20	6	1.3	15	-.20	44	.17	0	59

LOT  
**77**

## CELL 5700C ET

10/18/2015 | HOMO Black (P1) | HOMO Polled (P1)  
PERCENTAGE(81/72.8) | CELL 5700C | NXM2094891

Act. BW.....90	LH WAR HERO 195W	JCL LODESTAR 27L
Adj. WW.....734	<b>MAGS ANCHOR</b>	VERMILION ERICA LADY 1229
Adj. YW.....1,258	MGS XIPHOPAGOUS	DHVO DEUCE 132R
Adj. REA.....13.48	JCL LODESTAR 27L	MAGS SALINA
Adj. IMF.....2.89	<b>AUTO CARMINDA 656S</b>	HUNTS HI-LITER 245G
Adj. SC.....36.6	AUTO CARMINDA 872P	LOGAN'S CHEERLEADER 280G
		AUTO BLACK DAKOTA 129J
		AUTO JULIA 247J

EPDS	CE	BW	WW	YW	MA	CM	SC	DC	YG	CW	RE	MS	\$MI
	8	2.8	83	120	20	6	1.1	15	0	44	.03	.16	61

# LINHART LIMOUSIN

## BULLS RANKED IN THE TOP 20% OR BETTER PER EPD TRAIT

### LOT .... CED

1A.....CJSL 6257D  
1B.....CJSL 6260D  
1C.....CJSL 6265D  
2.....CJSL 6018D  
15.....CELL 6278D  
19.....ADLL 6005D  
26.....KQLL 6057D  
34.....CJSL 6113D  
35.....CELL 6117D  
36.....CELL 6128D  
41.....CELL 6140D  
45.....CELL 6154D  
54A.....CELL 5721C  
54B.....CELL 5710C  
54C.....CELL 5727C  
56.....CELL 5695C  
58.....CELL 5694C  
64.....CELL 5722C  
66.....CELL 5677C  
70.....CELL 5486C

43.....CJSL 6146D  
44.....CJSL 6150D  
48.....CJSL 6166D  
49.....CJSL 6180D  
51.....CJSL 6187D  
53.....CELL 6207D  
54A.....CELL 5721C  
54B.....CELL 5710C  
54C.....CELL 5727C  
55.....CELL 5658C  
56.....CELL 5695C  
57.....CELL 5636C  
58.....CELL 5694C  
59.....CELL 5702C  
60.....CELL 5683C  
61.....CELL 5624C  
63.....TMCK 297C  
64.....CELL 5722C  
66.....CELL 5677C  
68.....CJSL 5467C  
73.....TMCK 300C  
74.....TMCK 304C  
76.....CELL 5690C  
77.....CELL 5700C

1A.....CJSL 6257D

### LOT .... BW

12.....CJSL 6127D  
14.....CELL 6164D  
15.....CELL 6278D  
19.....ADLL 6005D  
22.....TMCK 351D  
35.....CELL 6117D  
41.....CELL 6140D  
54A.....CELL 5721C  
54B.....CELL 5710C  
54C.....CELL 5727C  
66.....CELL 5677C

### LOT .... YW

1A.....CJSL 6257D  
1B.....CJSL 6260D  
1C.....CJSL 6265D  
2.....CJSL 6018D  
3.....CJSL 6124D  
7.....CJSL 6144D  
8.....CJSL 6263D  
9.....CJSL 6026D  
10.....CELL 6252D  
13.....CELL 6062D  
15.....CELL 6278D  
16.....CELL 6276D  
17.....CELL 6267D  
22.....TMCK 351D  
23.....CJSL 6025D  
24.....CELL 6033D  
27.....CELL 6068D  
29.....CELL 6077D  
30.....CELL 6082D  
32.....CJSL 6087D  
33.....CELL 6100D  
39.....CJSL 6138D  
40.....CJSL 6145D  
43.....CJSL 6146D  
44.....CJSL 6150D  
48.....CJSL 6166D  
49.....CJSL 6180D  
51.....CJSL 6187D  
52.....CJSL 6200D  
53.....CELL 6207D  
54A.....CELL 5721C

### LOT .... WW

2.....CJSL 6018D  
3.....CJSL 6124D  
4.....CELL 6122D  
5.....CELL 6120D  
6.....CELL 6125D  
7.....CJSL 6144D  
8.....CJSL 6263D  
9.....CJSL 6026D  
10.....CELL 6252D  
13.....CELL 6062D  
15.....CELL 6278D  
16.....CELL 6276D  
17.....CELL 6267D  
22.....TMCK 351D  
23.....CJSL 6025D  
24.....CELL 6033D  
27.....CELL 6068D  
29.....CELL 6077D  
30.....CELL 6082D  
32.....CJSL 6087D  
33.....CELL 6100D  
39.....CJSL 6138D  
40.....CJSL 6145D  
43.....CJSL 6146D  
44.....CJSL 6150D  
48.....CJSL 6166D  
49.....CJSL 6180D  
51.....CJSL 6187D  
52.....CJSL 6200D  
53.....CELL 6207D  
54A.....CELL 5721C

54B.....CELL 5710C  
54C.....CELL 5727C  
55.....CELL 5658C  
56.....CELL 5695C  
57.....CELL 5636C  
58.....CELL 5694C  
59.....CELL 5702C  
60.....CELL 5683C  
61.....CELL 5624C  
62.....CELL 5404C  
63.....TMCK 297C  
64.....CELL 5722C  
65.....CELL 5409C  
66.....CELL 5677C  
68.....CJSL 5467C  
71.....CELL 5648C  
72.....CELL 5627C  
73.....TMCK 300C  
74.....TMCK 304C  
76.....CELL 5690C  
77.....CELL 5700C

### LOT .... MILK

11.....ADLL 6262D  
14.....CELL 6164D  
50.....CJSL 6186D  
62.....CELL 5404C  
65.....CELL 5409C  
66.....CELL 5677C  
74.....TMCK 304C

### LOT .... CEM

1A.....CJSL 6257D  
1B.....CJSL 6260D  
1C.....CJSL 6265D  
2.....CJSL 6018D  
12.....CJSL 6127D  
15.....CELL 6278D  
26.....KQLL 6057D  
34.....CJSL 6113D  
35.....CELL 6117D  
36.....CELL 6128D  
41.....CELL 6140D  
45.....CELL 6154D  
46.....CJSL 6153D  
48.....CJSL 6166D  
64.....CELL 5722C  
65.....CELL 5409C  
74.....TMCK 304C

### LOT .... SC

9.....CJSL 6026D  
12.....CJSL 6127D  
21.....CJSL 6251D  
22.....TMCK 351D  
24.....CELL 6033D  
25.....CELL 6050D  
26.....KQLL 6057D

52.....CJSL 6200D  
53.....CELL 6207D  
54A.....CELL 5721C  
54B.....CELL 5710C  
54C.....CELL 5727C  
56.....CELL 5695C  
57.....CELL 5636C  
58.....CELL 5694C  
59.....CELL 5702C  
61.....CELL 5624C  
63.....TMCK 297C  
64.....CELL 5722C  
66.....CELL 5677C  
67.....CELL 5464C  
70.....CELL 5486C  
73.....TMCK 300C  
75.....TOMR 5801C  
76.....CELL 5690C  
77.....CELL 5700C

### LOT .... CW

1A.....CJSL 6257D  
1B.....CJSL 6260D  
1C.....CJSL 6265D  
2.....CJSL 6018D  
3.....CJSL 6124D  
7.....CJSL 6144D  
8.....CJSL 6263D  
9.....CJSL 6026D  
10.....CELL 6252D  
13.....CELL 6062D  
16.....CELL 6276D  
17.....CELL 6267D  
22.....TMCK 351D  
23.....CJSL 6025D  
24.....CELL 6033D  
27.....CELL 6068D  
29.....CELL 6077D  
30.....CELL 6082D  
32.....CJSL 6087D  
33.....CELL 6100D  
38.....CJSL 6137D  
39.....CJSL 6138D  
40.....CJSL 6145D  
43.....CJSL 6146D  
44.....CJSL 6150D  
48.....CJSL 6166D  
49.....CJSL 6180D  
51.....CJSL 6187D  
52.....CJSL 6200D  
53.....CELL 6207D  
54A.....CELL 5721C  
54B.....CELL 5710C  
54C.....CELL 5727C  
55.....CELL 5658C  
57.....CELL 5636C  
58.....CELL 5694C  
59.....CELL 5702C

60.....CELL 5683C  
61.....CELL 5624C  
62.....CELL 5404C  
63.....TMCK 297C  
64.....CELL 5722C  
65.....CELL 5409C  
66.....CELL 5677C  
68.....CJSL 5467C  
71.....CELL 5648C  
72.....CELL 5627C  
73.....TMCK 300C  
74.....TMCK 304C  
76.....CELL 5690C  
77.....CELL 5700C

### LOT .... REA

13.....CELL 6062D  
19.....ADLL 6005D  
22.....TMCK 351D  
25.....CELL 6050D  
27.....CELL 6068D  
30.....CELL 6082D  
32.....CJSL 6087D  
33.....CELL 6100D  
44.....CJSL 6150D  
51.....CJSL 6187D  
54A.....CELL 5721C  
54B.....CELL 5710C  
55.....CELL 5658C  
56.....CELL 5695C  
58.....CELL 5694C  
62.....CELL 5404C  
65.....CELL 5409C  
66.....CELL 5677C  
73.....TMCK 300C  
74.....TMCK 304C

### LOT .... YG

58.....CELL 5694C  
65.....CELL 5409C

### LOT .... MARB

1A.....CJSL 6257D  
1B.....CJSL 6260D  
1C.....CJSL 6265D  
2.....CJSL 6018D  
5.....CELL 6120D  
6.....CELL 6125D  
7.....CJSL 6144D  
9.....CJSL 6026D  
14.....CELL 6164D  
15.....CELL 6278D  
22.....TMCK 351D  
34.....CJSL 6113D  
35.....CELL 6117D  
36.....CELL 6128D  
41.....CELL 6140D  
45.....CELL 6154D

47.....CELL 6157D  
52.....CJSL 6200D  
54B.....CELL 5710C  
54C.....CELL 5727C  
56.....CELL 5695C  
57.....CELL 5636C  
59.....CELL 5702C  
60.....CELL 5683C  
63.....TMCK 297C  
64.....CELL 5722C  
66.....CELL 5677C  
68.....CJSL 5467C  
70.....CELL 5486C  
71.....CELL 5648C  
72.....CELL 5627C

### LOT .... \$MTI

1A.....CJSL 6257D  
1B.....CJSL 6260D  
1C.....CJSL 6265D  
2.....CJSL 6018D  
3.....CJSL 6124D  
5.....CELL 6120D  
6.....CELL 6125D  
7.....CJSL 6144D  
9.....CJSL 6026D  
13.....CELL 6062D  
14.....CELL 6164D  
15.....CELL 6278D  
22.....TMCK 351D  
24.....CELL 6033D  
34.....CJSL 6113D  
35.....CELL 6117D  
40.....CJSL 6145D  
41.....CELL 6140D  
47.....CELL 6157D  
52.....CJSL 6200D  
55.....CELL 5658C  
54A.....CELL 5721C  
54B.....CELL 5710C  
54C.....CELL 5727C  
56.....CELL 5695C  
57.....CELL 5636C  
58.....CELL 5694C  
59.....CELL 5702C  
60.....CELL 5683C  
61.....CELL 5624C  
63.....TMCK 297C  
64.....CELL 5722C  
66.....CELL 5677C  
68.....CJSL 5467C  
70.....CELL 5486C  
71.....CELL 5648C  
72.....CELL 5627C  
76.....CELL 5690C  
77.....CELL 5700C

# LINHART

# BULL CENTRAL

A Bull Battery that Creates a Spark.

## SSTO **BEST BET** 456B

HetP | HomoB | Lim-Flex 43%  
S A V Harvester 0338 x ELCX Twilight 114X  
*Owned with Stowers Limousin*

CE: 1 BW: 2.4 WW: 84 YW: 122 MK: 25 CM: 1 SC: 1.4  
DC: 16 YG: .12 CW: 46 RE: .47 MB: .38 \$MI: 68



## MAGS **AVIATOR**

Homo P | Homo B | Lim-Flex 59%  
MAGS Winston x MAGS Xtra Rest  
*Owned with the Aviator Syndicate*

CE: 13 BW: -0.4 WW: 67 YW: 101 MK: 25 CM: 10  
SC: 0.5 DC: 26 YG: .31 CW: 30 RE: .11 MB: .59 \$MI: 69

## TMCK **CAMDEN YARDS** 195C

HomoP | HomoB | Lim-Flex 56%  
TMCK Alfalfa 35X x TMCK Casual Affair 311A  
*Owned with Tubmill Creek Farms*

CE: 13 BW: -0.3 WW: 85 YW: 130 MK: 31 CM: 10  
SC: 1.0 DC: 9 YG: .00 CW: 42 RE: .60 MB: .08 \$MI: 59



## CJSL **CREED** 5042C

HomoP | HomoB | Lim-Flex 53  
MAGS Aviator x CJLS 2090Z  
*Owned with Tubmill Creek Farms*

CE: 13 BW: -0.1 WW: 77 YW: 114 MK: 28 CM: 8  
SC: 0.8 DC: 10 YG: .25 CW: 33 RE: .48 MB: .35 \$MI: 64

# LINHART

# LIMOUSIN

Charles & Heather Linhart  
Aaron, Kevin & Kyle  
27195 175th St. • Leon, Iowa 50144  
Charles: 641/340-1306  
[www.linhartlimousin.com](http://www.linhartlimousin.com)

Semen Available Exclusively through  
Grassroots Genetics (866) 305-9600 or call the Farm (641) 340-1306.

# [www.linhartlimousin.com](http://www.linhartlimousin.com)



# REFERENCE SIRES

## LIMOUSIN & LIM-FLEX SIRES

	Sire	Dam	CE	BW	WW	YW	MK	CM	SC	DC	CW	RE	YG	MB	\$MI
<b>AHCC BARN BURNER B907</b>	AHCC WESTWIND W544	LVLS 9066U	7	0.4	61	96	30	8	1.1	15	0.05	28	0.15	-0.11	44.17
<b>AHCC ZERO DESIGN Z838</b>	AHCC WESTWIND W544	AHCC MISS PRECISION U838	9	-0.1	65	108	26	9	0.7	13	-0.07	34	0.65	-0.11	46.42
<b>AUTO CRUZE 132X</b>	MAGS THE GENERAL	AUTO REBECA 292S	10	-1.5	82	123	30	11	0.0	14	0.02	40	0.07	-0.03	53.65
<b>CELL 3211A</b>	S A V BISMARCK 5682	AUTO TOOTSIE POP 2272T	10	2.2	75	111	22	8	1.3	11	-0.25	39	0.86	0.19	61.6
<b>COLE ABSOLUTE 05A</b>	AHCC XPENSE ACCOUNT X516	COLE MISS TRAVELER O29X	3	3.6	99	162	25	2	1.2	8	0.11	66	0.96	-0.02	58.62
<b>DHVO DEUCE 132R</b>	GPFF BLAQUE RULON	AMY JO DHAN 20L	4	3.2	87	120	22	3	1.5	26	-0.16	45	0.64	-0.40	42.84
<b>EBFL YPSILANTI 420Y</b>	TC ABERDEEN 759	MAGS RAMADA	6	2.8	80	114	28	9	1.6	6	-0.18	41	0.85	0.13	60.10
<b>EF BLAST ZONE 507B</b>	TOPLINE VISION FLY OVER	EF UPTOWN GIRL	10	1.2	54	90	30	9	-	-	-0.02	26	0.38	0.69	71.70
<b>EF XCESSIVE FORCE</b>	D A TRAVELER 004 703	CFLX MOLLYS IMAGE	8	-2.2	54	86	21	9	2.1	14	0.25	18	-0.34	0.44	60.49
<b>MAGS ACAPULCO</b>	CONNELLY CONSENSUS 7229	EXLR LUVLY 821M	7	1.1	63	95	28	7	0.6	24	0.00	28	0.48	0.58	70.22
<b>MAGS ANCHOR</b>	LH WAR HERO 195W	MGS XIPHOPAGOUS	6	1.9	88	125	15	7	1.2	12	0.06	46	0.33	0.18	62.57
<b>MAGS XUKALANI</b>	RITO 112 OF 2536 RITO 616	MAGS UKALANI	17	-1.2	64	108	21	12	1.7	-9	-0.06	33	0.37	0.65	73.74
<b>MAGS Y-AXIS</b>	TC ABERDEEN 759	MAGS UAHUKA	14	-0.6	71	120	30	10	1.5	38	-0.37	41	1.10	-0.10	51.13
<b>MAGS YIP</b>	MAGS THE GENERAL	AUTO CARMINDA 656S	10	1.8	70	112	22	8	0.4	2	0.14	40	-0.18	0.15	55.55
<b>MAGS ZODIAC</b>	MAGS WINSTON	MAGS XANTHOUS	12	2.2	86	154	19	10	0.7	19	0.07	65	0.19	0.19	63.03
<b>TMCK ALFALFA 35X</b>	S A V PIONEER 7301	TMCK JOYCE 570U	10	-1.5	74	118	26	10	0.9	-5	0.04	38	0.75	0.23	60.64
<b>TMCK ARCHITECT 031A</b>	TMCK HYDRAULIC 17Y	TMCK LA VEDA 909Y	10	-0.3	86	132	24	6	1.3	12	-0.07	48	0.81	0.04	58.19
<b>TMCK HYDRAULIC 17Y</b>	S A V PIONEER 7301	HSF WALL OF FAME	7	3.0	96	154	18	6	1.4	13	0.13	65	0.75	0.26	67.75

## ANGUS SIRES

	Sire	Dam	CE	BW	WW	YW	MK	CM	SC	DC	CW	RE	YG	MB	\$MI
<b>D A TRAVELER 004 703</b>	S A V 8180 TRAVELER 004	ROSEWOOD ERICA 5010	10	0.9	64	107	25	9	2	17	0.22	36	-0.06	0.47	64.98
<b>DAMERON C-5 AMERICAN CLASSIC</b>	EXG RS FIRST RATE S903 R3	DAMERON NORTHERN MISS 511	7	-0.3	63	102	35	8	0.5	10	0.1	30	0.11	0.52	67.18
<b>EXAR DENVER 2002B</b>	EXAR UPSHOT O562B	EXAR ROYAL LASS 1067	18	-1.1	74	131	41	11	1.6	22	0.04	47	1.10	1.14	93.74
<b>EXAR EZX 3772B</b>	A A R TEN X 7008 S A	BASIN JOY 6278	24	-4.7	56	112	27	14	1.5	18	-0.12	31	0.49	1.36	97.82
<b>GAMBLES SAFE BET</b>	NORTHERN IMPROVEMENT 4480	GAMBLES LADY 961	15	-1.3	65	99	21	11	0.72	13	-0.14	27	0.66	0.72	76.95
<b>S A V ANGUS VALLEY 1867</b>	S A V IRON MOUNTAIN 8066	S A V MAY 2397	24	-3.4	66	124	14	15	1.2	13	0.15	40	0.54	0.99	85.19
<b>S A V HESSTON 2217</b>	S A V HARVESTOR O338	S A V EMBLYNETTE 3301	12	-1.3	69	115	30	7	1.3	-	0.18	36	0.43	1.00	86.01
<b>S A V RESOURCE 1441</b>	RITO 707 OF IDEAL 3407 7075	S A V BLACKCAP MAY 4136	6	0.5	78	149	35	-3	1.2	17	0.08	60	1.35	0.48	71.19
<b>SILVEIRAS MISSION NEXUS 1378</b>	LJC MISSION STATEMENT P27	SILVEIRAS DAORV 8399	18	-3.1	74	122	24	2	1.4	-	-0.07	38	0.74	0.42	68.58
<b>SILVEIRAS STYLE 9303</b>	GAMBLES HOT ROD	SILVEIRAS ELBA 2520	20	-0.9	46	87	23	13	1.1	16	0.14	22	0.07	0.83	73.43



**AHCC ZERO DESIGN Z838**



**COLE ABSOLUTE 05A**



**EF XCESSIVE FORCE**



**MAGS ACAPULCO**



**MAGS ANCHOR**



**MAGS XUKALANI**



**MAGS ZODIAC**



**TMCK ARCHITECT 031A**



**EXAR DENVER 2002B**



**EXAR EZX 3772B**



**PVF INSIGHT 0129**



**SILVEIRAS MISSION NEXUS 1378**



**A Most Sincere Thank You From**  
**LINHART LIMOUSIN**

We appreciate your support and interest in our breeding program. We take the people side of the business seriously and never for granted, that's why producing a quality product and making sure our customers are satisfied has always been a top priority. Simply put, your attendance and participation at our sales has humbled us, and we wish you many successes with your purchases.

Thank you for taking time to view the catalog and allowing us the opportunity to earn your business.

PLAN TO BID ONLINE  
**Linhart Limousin Divas Online Female Sale**  
APRIL 25, 2017  
Selling Fancy Show Prospects



# NOTES

Sale Averages:

	NUMBER OF LOTS	TOTAL	AVERAGE
_____ Spring Yearlings	_____	_____	_____
_____ Fall Yearlings	_____	_____	_____
_____ Sale Gross	_____	_____	_____

## Upcoming Linhart Sale Dates...

**APRIL 25, 2017**

**LINHART LIMOUSIN DIVAS ONLINE FEMALE SALE**

[www.mcmarketingmanagement.com](http://www.mcmarketingmanagement.com)

**NOVEMBER 12, 2017**

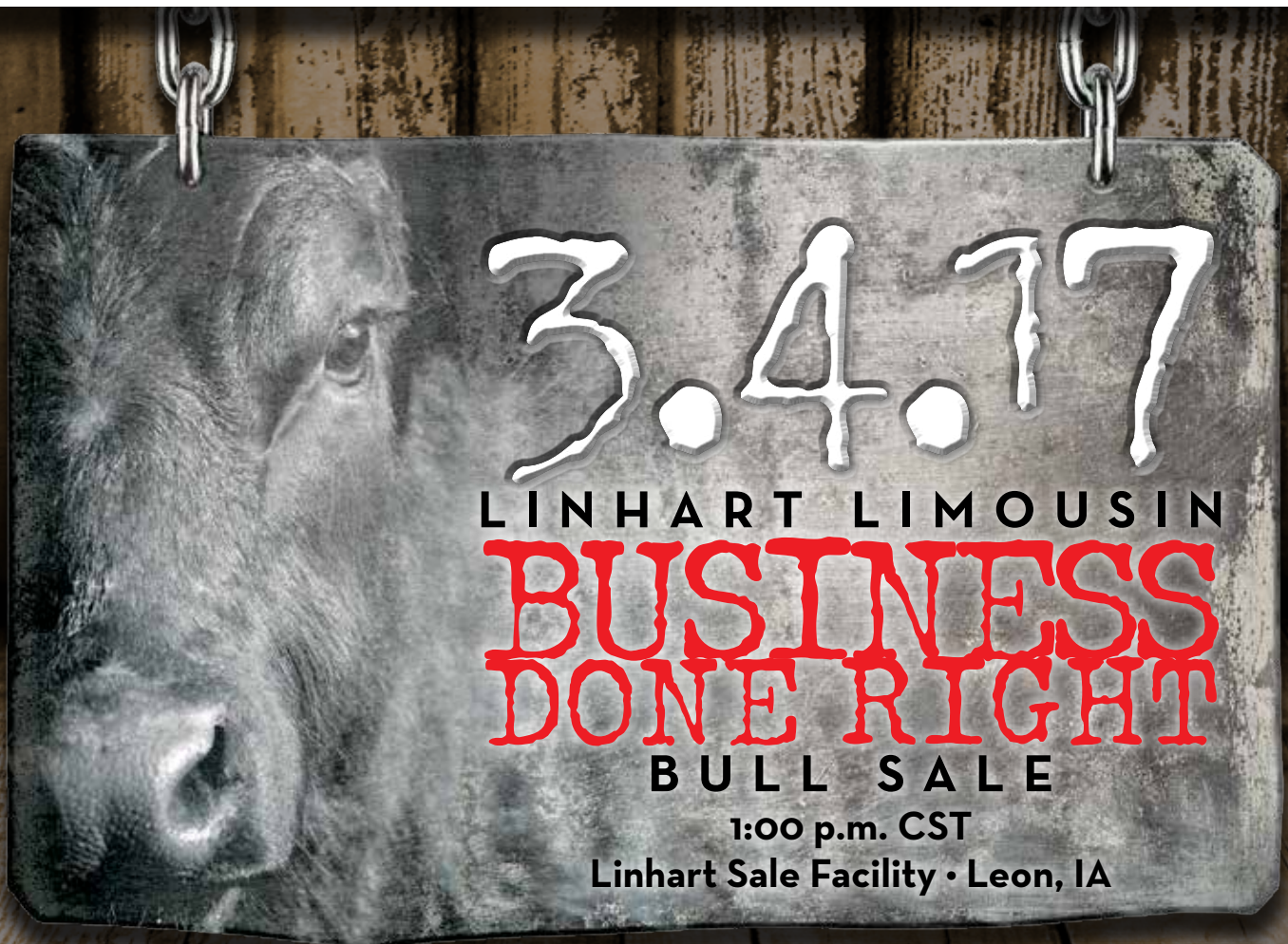
**LINHART LIMOUSIN ANNUAL FALL HARVEST FEMALE SALE**

Leon, IA



Marketing Management

648 West Sawgrass Trail  
Dakota Dunes, SD 57049



**LINHART  
LIMOUSIN**

Charles & Heather Linhart  
Aaron, Kevin & Kyle  
27195 175th St. • Leon, Iowa 50144  
Charles: 641/340-1306  
[www.linhartlimousin.com](http://www.linhartlimousin.com)