



**NATIONAL LIMOUSIN
SALE**

**Tuesday,
January 14, 2014**

**6 p.m. (MST)
Denver, Colorado**

TUESDAY, JANUARY 14 • 6:00 P.M. MST
BEEF PALACE AUCTION ARENA • DENVER, COLORADO
BULLS • BRED HEIFERS • OPEN HEIFERS
EMBRYOS • FLUSH OFFERINGS

Limousin in Denver

SCHEDULE OF EVENTS:

Saturday, January 11

9:00 a.m. Hill Cattle Check-In

Sunday, January 12

7:30 a.m. NALF Board Meeting

12:30 p.m. Yard cattle Check-In

5:00 p.m. Yard Exhibitor Meeting

6:00 p.m. ELA & NALF Board Social

7:00 p.m. Board Sponsored NALF Membership Social

Monday, January 13

7:30 a.m. Annual Meeting

Noon Bulls and Burgers in the Yards

6:00 p.m. Membership Banquet

Tuesday, January 14

8:00 a.m. Junior Limousin and Lim-Flex® Shows

3:00 p.m. Limousin Sale Cattle Parade

6:00 p.m. National Limousin Sale

Wednesday, January 15

8:00 a.m. MOE Limousin and Lim-Flex Show

3:00 p.m. Begin Hill Release

9:00 p.m. All Hill Cattle out of Barn

Thursday, January 16

8:00 a.m. Limousin and Lim-Flex Pen and Carload

12:00 p.m. Hamburger Fry

5:00 p.m. Begin Yard Release

SALE MANAGEMENT TEAM:



American Cattle Services

Ken Holloway
580.581.7652



R&R Marketing Co.

Randy Ratliff
615.330.2735

R&R Marketing will now be accepting payment by credit cards.



KK Seedstock

Keith Kisse
817.821.6263



MC Marketing Management

Kiley McKinna
402.350.3447

AUCTIONEER:

C.K. "Sonny" Booth
918.533.5587

SALE CONSULTANT:

Grassroots Consulting
Mark Smith
515.229.5227

OFFICIAL HEADQUARTERS HOTEL: Renaissance Denver Hotel

3801 Quebec Street, Denver, CO 80207 (303) 399-7500 • fax: (303) 321-1966

Delivery guaranteed to cost no more than \$300 to central points anywhere in the continental United States through Lathrop Trucking, Inc. Randy Lathrop, 847.426.5009.

All cattle sell under the standard North American Limousin Foundation guarantee. All announcements made at sale time take precedence over printed material. EPDs current as of 12/10/2013.

1

ENGD ACCELERATOR 3512A

LIM-FLEX(75/66.6) BULL HOMO PLD(T) HOMO BLK(T)
 BD: 3/5/2013 Tattoo: ENGD3512A Reg. LFM2035281

CED	BW	WW	YW	MA	CEM	SC	DOC	CW	RE	YG	MARB	\$MTI
8	1.6	69	120	38	5			44	0.45	0.20	0.24	58

TC ABERDEEN 759	C R A BEXTOR 872 5205 608	Act. BW	70
MAGS Y-AXIS	TC BLACKBIRD 4034	Adj. WW	667
MAGS UAHUKA	DHVO DEUCE 132R	Adj. YW	
	CARROUSELS PINA COLADA	Adj. SC	
AUTO DOLLAR GENERAL 122R	LVLS SECRET WEAPON 4408K	Adj. REA	
JONK POLL UNIQUE 70U	AUTO KYRIA 232K	Adj. IM	
JONK BLACK SILK	RADS BLACK PRODIGY		
	BLACK INK HERSHEY KISS		



Consigned by Englewood Farm, Lancaster, KY and Quaker Hill Farm, Louisa, VA
 This homozygous polled and homozygous black March calf is one of the top members of the Englewood string in the Denver yards. He is one of the most significant young bull calves in the industry. His trait-leading EPD profile and 70 pound birth weight and 667 pound weaning weight are among the tops at Englewood. His 118 spread from birth weight to yearling weight EPD makes him a serious young herd sire for the years to come. His dam was the top-selling female in the recent Englewood Mature Cowherd Dispersal. His sire is one of the top Lim-Flex breeding sires available.

2

CJSL ABSOLUTE 3138A

LIM-FLEX(50/44.8) BULL HOMO PLD(P) HOMO BLK(T)
 BD: 3/14/2013 Tattoo: CJSL3138A Reg. LFM2036629

CED	BW	WW	YW	MA	CEM	SC	DOC	CW	RE	YG	MARB	\$MTI
8	1.1	63	111	34	2			46	-0.02	0.43	0.25	55

S A V MANDAN 5664	S A V 8180 TRAVELER 004	Act. BW	84
S A V NORTH DAKOTA 7451	S A V ABIGALE 0451	Adj. WW	758
S A V PRIMROSE 4410	SAF 598 BANDO 5175	Adj. YW	
	S A V PRIMROSE 0074	Adj. SC	
DHVO DEUCE 132R	GPFF BLAQUE RULON	Adj. REA	
MAGS WASSAIL	AMY JO DHAN 20L	Adj. IM	
MAGS MANDA	EXLR DAKOTA 353G		
	MAGS JEWEL		



Consigned by Linhart Limousin, Leon, IA
 Coming out of the Linhart Limousin National Western pen of bulls in the yards is this double homozygous, moderate made, sound structured, deep bodied, stout featured son out of the 2011 All American Futurity grand champion female, MAGS Wassail. On paper Absolute separates himself from the pack posting an impressive birth to yearling spread and is highlight by ranking in the top 15% or better for WW, YW and milk.

3

TASF APPLIED FORCE 744A

LIM-FLEX(75/65.6) BULL HOMO PLD(T) HOMO BLK(P)
 BD: 3/25/2013 Tattoo: TASF744A Reg. LFM2036585

CED	BW	WW	YW	MA	CEM	SC	DOC	CW	RE	YG	MARB	\$MTI
11	0.1	50	93	31	3	0.7		36	0.18	0.23	0.12	47

D A TRAVELER 004 703	S A V 8180 TRAVELER 004	Act. BW	86
EF XCESSIVE FORCE	ROSEWOOD ERICA 5010	Adj. WW	795
CFLX MOLLYS IMAGE	DHVO DEUCE 132R	Adj. YW	
	JCL PEPPERMINT	Adj. SC	
EXLR NASDAQ 380R	CARROUSELS NASDAQ	Adj. REA	
TASF WHISKEY LULLABY 357W	KKCC DOLL PEGGY	Adj. IM	
TMCK MISS THICK 37T	TNUH BLUE PRINT 245H		
	COLE 47R		



Consigned by Thomas and Son Farms, Boonsboro, MD
 This 75% Lim-Flex herd sire prospect is one of the finest ever created at Thomas & SonFarms. He is sired by EF Xcessive Force, the 2012 national champion bull. His dam is TASF Whiskey Lullaby 357W, the once NAILE grand champion and Denver National Junior Show grand champion. Not only does this bull represent national championship genetics but also is solid in his EPD profile and fault-free in his conformation. He offers a 0.1 for birth, 93 for yearling weight, and 31 for milk. We admire his clean front end, length down his top and squareness out of his rump. He is super sound made and very appealing in his profile. Selling 2/3 interest and full possession.

Bred Heifers

4

CYWD ZADA 24Z

PUREBRED(100/89.1) COW HET PLD(T) HET BLK(T)
BD: 4/2/2012 Tattoo: CYWD24Z Reg. NPF2016833

CED	BW	WW	YW	MA	CEM	SC	DOC	CW	RE	YG	MARB	\$MTI
16	0.5	43	87	31	9	0.4	27	17	0.12	0.20	0.16	47

AUTO DOLLAR GENERAL 122R LVLS SECRET WEAPON 4408K
MAGS UNREAL AUTO KYRIA 232K
MAGS PASSION FLOWER JCL LODESTAR 27L
CANE RIDGE POLL ELLIE
GPF BLAQUE RULON
MAGS SAVAGE MAGS MANDA
CYWD WORLD CLASS 7W JCL LODESTAR 27L
CYWD ROXANNE 11R CYWD 24N

Act. BW	78
Adj. WW	
Adj. YW	
Adj. SC	
Adj. REA	
Adj. IM	

Consigned by Woodard Limousin, Calhan, CO

Study this functionally sound, moderate made, deep sided, square hipped daughter of the popular MAGS Unreal A.I sire who's proven to infuse calving ease, maternal strength and carcass merit to the next generation. True to her sire, on paper Zada gets it done posting both calving ease and milk figures in the top 5% plus, a marbling EPD in the top 2%. Sale day don't miss the opportunity to invest in this purebred that brings the unique combination of real world practicality and mainstream carcass acceptance to the table. Bred 5/20/13 to MAGS Xukalani. Safe



*Pictured as a yearling.

5

LH ZELMA ANN 156Z

PUREBRED(100/89.6) COW HOMO PLD(T) HOMO BLK(P)
BD: 9/19/2012 Tattoo: LCHA156Z Reg. NPF2026811

CED	BW	WW	YW	MA	CEM	SC	DOC	CW	RE	YG	MARB	\$MTI
9	1.3	61	107	24	1	1.2	23	49	0.66	0.03	-0.06	46

GPF BLAQUE RULON BLACK DIAMOND
DHVO DEUCE 132R QUAIL RUN RAMONA BP
AMY JO DHAN 20L BLACK CAT DHAN 152G
GPF AMBER JO
HUNTS HI-LITER 245G
JCL LODESTAR 27L LOGAN'S CHEERLEADER 280G
KRVN SENORITA 119S BLACK DIAMOND
GPF BLAQUE CRYSTAL QUAIL RUN RAMONA BP

Act. BW	76
Adj. WW	669
Adj. YW	1080
Adj. SC	
Adj. REA	
Adj. IM	

Consigned by Hall Cattle Company, Sweetwater, TX

This female has a world of potential as a real breeding piece; a double homozygous purebred with breed leading growth EPDs that put her in the top 5% for WW and YW while being top 1% for SC. She is line bred back to Quail Run Ramona, the breed matriarch dam of the ever popular Rulon. Bred 9/19/13 to MAGS Eagle (a double homozygous LF 50% son of Winston).



6

MAGS ZIPORA

LIM-FLEX(63/55.7) COW HET PLD(T) HOMO BLK(T)
BD: 3/19/2012 Tattoo: MAGS3955Z Reg. LFF2008502

CED	BW	WW	YW	MA	CEM	SC	DOC	CW	RE	YG	MARB	\$MTI
7	-1.3	54	103	29	2	0.6		26	0.06	0.16	0.25	54

RITO 112 OF 2536 RITO 616 RITO 616 OF 4B20 6807
MAGS XUKALANI G A R PRECISION 2536
MAGS UKALANI BASIN FRANCHISE P142
CARROUSELS PINA COLADA
GPF BLAQUE RULON BLACK DIAMOND
MAGS SHIMMER QUAIL RUN RAMONA BP
MAGS MANDA EXLR DAKOTA 353G
MAGS JEWEL

Act. BW	68
Adj. WW	736
Adj. YW	1149
Adj. SC	
Adj. REA	11.94
Adj. IM	6.31

Consigned by Magness Land and Cattle, Platteville, CO

Here's one of the finest Lim-Flex females ever created at Magness Land & Cattle. She's truly elite in her structural design being big footed, true tracking and perfectly constructed from the ground up. This visually flawless female on posts a huge birth to yearling spread. Note she's carrying the service of the highly regarded \$48,000, A.I sire, MAGS Y-Axis. The blending of these genetics promises to produce amazing results. Bred 4/16/13 to MAGS Y-Axis. Safe. P.E. 5/24 - 7/31 to GMLY Atlas.



7

VL ARIAL 335A

PUREBRED(100/90.6) COW DBL PLD DBL BLK
 BD: 3/19/2013 Tattoo: VORT335A Reg. NPF2030852

CED	BW	WW	YW	MA	CEM	SC	DOC	CW	RE	YG	MARB	\$MTI
7	1.4	56	89	20	1	0.6	25	31	0.79	-0.13	-0.05	46

WULFS SPRING LOADED 3158S
 WULFS XISTANCE V638X
 RPLF SWEET SIXTEEN 638S

COLE WULF HUNT
 WULFS NADINE 3158N
 CARROUSELS PURE POWER
 MEADO-WEST 316N

Act. BW	85
Adj. WW	667
Adj. YW	
Adj. SC	
Adj. REA	
Adj. IM	

TUBB LAW DOG 009L
 VL TRIXY
 WL LILLY MAE 956L

EXLR POLLED BENCHMARK709G
 CHR JO DEE
 BLACK DIABLO 725G
 WILLIAMS LIZA JANE 147J

Consigned by Vorthmann Limousin, Treynor, IA

Arial is an eye appealing show prospect that exemplifies the term complete. She is a nice fronted, strong topped, well-muscled individual that stands on a solid foot with great structure. Sired by the Vorthmann senior herd sire, Wulfs Xistance V638X, a popular sale feature of the 2011 Wulf Opportunity Sale who has been producing popular calves in his first two calf crops, she comes from the heart of one of the most passionate Limousin herds in America. Here's a high docility, high REA female who is liable to end up in a donor pen once you're done showing her.



8

LFL ALLISON 3043A

PUREBRED(88/78.0) COW HOMO PLD(T) HOMO BLK(T)
 BD: 5/5/2013 Tattoo: BLAW3043A Reg. NPF2036672

CED	BW	WW	YW	MA	CEM	SC	DOC	CW	RE	YG	MARB	\$MTI
7	2.5	56	92	28	-1	0.8	19	30	0.45	-0.01	-0.05	44

DHVO DEUCE 132R
 MAGS XYLOID
 BOHI RHONDA 314R

GPFF BLAQUE RULON
 AMY JO DHAN 20L
 EXLR NEW GENERATION 071M
 DAVIS ROSETTA 9514

Act. BW	71
Adj. WW	756
Adj. YW	
Adj. SC	
Adj. REA	
Adj. IM	

GPFF BLAQUE RULON
 TARA JO 7132T
 VOET ANNA JO

BLACK DIAMOND
 QUAIL RUN RAMONA BP
 BLACK CAT DHAN 152G
 GPFF AMBER JO

Consigned by Lawrence Family Limousin, Anton, TX

This double homozygous purebred daughter of the increasingly popular, MAGS Xyloid, is near picture perfect in her design and will have a lot of friends on sale day. Her maternal grand-dam is a full sister in blood to the 3-time MOE sire of the year, Deuce, and she is also a half-sister to champion Lim-Flex bull and champion Limousin female at the American Royal. To go along with being royally bred, she is a stout made female that is deep bodied and super sound on her feet and she weaned off at 756 lbs.



9

ELCX KNOWING 303Z

LIM-FLEX(63/56.1) COW HOMO PLD(T) HET BLK(T)
 BD: 11/1/2012 Tattoo: ELCX303Z Reg. LFF2024436

CED	BW	WW	YW	MA	CEM	SC	DOC	CW	RE	YG	MARB	\$MTI
11	0.1	49	93	30	4	0.8	21	31	-0.06	0.26	0.21	50

DHVO DEUCE 132R
 MAGS XYLOID
 BOHI RHONDA 314R

GPFF BLAQUE RULON
 AMY JO DHAN 20L
 EXLR NEW GENERATION 071M
 DAVIS ROSETTA 9514

Act. BW	80
Adj. WW	588
Adj. YW	918
Adj. SC	
Adj. REA	12.19
Adj. IM	4.44

MYTTY IN FOCUS
 SBLX UNKNOWN 104U
 MAGS MANUELA

S A F FOCUS OF E R
 MYTTY COUNTESS 906
 EXLR LIMITED EDITION 765J
 AUTO CITY NIGHTS 214H

Consigned by Pinegar Limousin, Springfield, MO and Sugar Bush Cattle, Inc., Allen, MI

2013 American Royal Reserve grand champion Lim-Flex female and one of the very best to ever sell in a National Sale is ELCX Knowing 303Z. This young show champion will be a contender for the Denver National Open show and rightfully so. She is perfect no matter how you look at her and is one of the very finest ever created. She was bred in the Edwards Land & Cattle Co. program and has been successfully campaigned and owned by Sugar Bush and Pinegar. She is a 62.5% Lim-Flex homozygous polled daughter of MAGS Xyloid and from the big time Edwards/Pinegar donor and daughter of MAGS Manuela, SBLX Unknown 104U.



Open Heifers

10

ENGD ATHENA 3006A

LIM-FLEX(50/43.8) COW HOMO PLD(T) HOMO BLK(T)
BD: 2/11/2013 Tattoo: ENGD3006A Reg. LFF2029963

CED	BW	WW	YW	MA	CEM	SC	DOC	CW	RE	YG	MARB	\$MTI
8	0.9	59	113	34	2			43	0.25	0.33	0.36	58

TC ABERDEEN 759
MAGS Y-AXIS
MAGS UAHUKA

C R A BEXTOR 872 5205 608
TC BLACKBIRD 4034
DHVO DEUCE 132R
CARROUSELS PINA COLADA

Act. BW 70
Adj. WW 705
Adj. YW
Adj. SC
Adj. REA
Adj. IM

G A R PREDESTINED
ENGD PINA COLODA 702Y
PBR5 TOUCH ME GENTLY 798T

B/R NEW DESIGN 036
G A R EXT 4206
DHVO DEUCE 132R
CARROUSELS PINA COLADA

Consigned by Englewood Farm, Lancaster, KY

ENGD Athena 3006A is outstanding heifer calf from the entire Englewood calf crop. The February heifer calf is from the ET program, and she is one of the top members of the Carrouseles Pina Colada cow family. Sired by MAGS Y-Axis, she is a half-sister to some of the most exciting calves born in the breed in 2013. The heifer calf is a part of the Englewood show string, and she promises to be one of the most competitive. Her balanced trait-leading numbers make this homozygous polled and homozygous black female one of the top young prospects for the coming year.



11

LFL ALICIA 3014 A

LIM-FLEX(48/43.4) COW HOMO PLD(P) HOMO BLK(P)
BD: 2/23/2013 Tattoo: BLAW3014A Reg. LFF2030356

CED	BW	WW	YW	MA	CEM	SC	DOC	CW	RE	YG	MARB	\$MTI
10	0.6	56	109	39	6	0.5		21	-0.23	0.40	0.48	61

BASIN FRANCHISE P142
MAGS UNITE TOGETHER
MAGS REMBRANDT

C A FUTURE DIRECTION 5321
BASIN CHLOE 812L
EF MAIN STAY 541M
MAGS MANDARIN 425L

Act. BW 74
Adj. WW 668
Adj. YW
Adj. SC
Adj. REA
Adj. IM

MAGS USDA CHOICE
LFL UPPER CRUST 0090 X
LFL UPPER CRUST 8083 U

AUTO DOLLAR GENERAL 122R
HA LADY 1079
LH RODEMASTER 338R
TYCU 1009S

Consigned by Edwards Land & Cattle Co., Beulaville, NC & Lawrence Family Limousin, Anton, TX

Here is a big numbered and very well made open heifer from one of the top selling females of the 2013 All American Sales of Sales, LFL Upper Crust 0090X, a daughter of MAGS USDA Choice going back to the famous LH Rodemaster 338R. We admire her breed leading numbers of 109 for yearling weight, 39 for milk, .48 for marbling and 61 for MTI. She is very clean up through her front end, straight lined and very appealing in her profile.



12

LH ALIBI 014A

LIM-FLEX(47/42.6) COW HOMO PLD(P) HET BLK(T)
BD: 2/28/2013 Tattoo: LCHA014A Reg. LFF2036193

CED	BW	WW	YW	MA	CEM	SC	DOC	CW	RE	YG	MARB	\$MTI
11	-1.3	57	110	31	3	0.5	17	51	-0.05	0.48	0.42	59

BASIN FRANCHISE P142
LH U HAUL 135U
EXLR DUCHESS 7129R

C A FUTURE DIRECTION 5321
BASIN CHLOE 812L
EXLR NEW GENERATION 071M
EXLR 199H

Act. BW 70
Adj. WW 834
Adj. YW
Adj. SC
Adj. REA
Adj. IM

MYTTY IN FOCUS
LH WAIT A MINUTE 135W
LH RADIANCE 003R

S A F FOCUS OF E R
MYTTY COUNTESS 906
GPFF BLAQUE RULON
LH LILLY 113L

Consigned by Hall Cattle Company, Sweetwater, TX

Alibi is a powerful performance female that is very feminine and structurally sound. She projects to the top of the class with EPDs for CED, BW, WW, YW, CW and MARB that are all in the top 20% of the breed. She is out of a strong cow family and is sired by the proven LH U Haul 135U, who also sired the champion Lim-Flex female at the 2012 National Junior Show.



13

JCL UNDYING LOVE 624A

LIM-FLEX(75/68.0) COW HOMO PLD(T) HOMO BLK(T)
 BD: 3/3/2013 Tattoo: JCLC624A Reg. LFF2031552

CED	BW	WW	YW	MA	CEM	SC	DOC	CW	RE	YG	MARB	\$MTI
7	1.9	52	95	25	2	0.4	14	17	0.22	0.15	0.13	49

SCHILLING'S TALLADEGA
 CALO BRICKYARD 902W
 EXG E839 1407 M175 LS

KRVN NASKAR 013N
 RCSX RAINY DAY 80R
 BON VIEW NEW DESIGN 1407
 PAF 4019 6807 E839

Act. BW 70
 Adj. WW 673
 Adj. YW
 Adj. SC
 Adj. REA
 Adj. IM

GPFF BLAQUE RULON
 CHR UNDYING LOVE 156U
 POPE'S BLAQUE MEADOW

BLACK DIAMOND
 QUAIL RUN RAMONA BP
 HUNTS HI-LITER 245G
 JCL ANTIQUE LACE

Consigned by JCL Land and Cattle, Welch, OK

JCLC Undying Love 624A is half-sister to JCL Undying Love 013Y that was 2012 All American Futurity Grand Champion Heifer. This 75% Lim-Flex heifer is sired by the once National Champion Lim-Flex bull CALO Brickyard 902W. She is homozygous polled, homozygous black and is one top open show heifer from the heart of the JCL program. She is solid in her foundation and very appealing with her EPD profile.



14

JCL WILDFLOWER LNLM 501A

LIM-FLEX(50/45.3) COW HOMO PLD(T) HOMO BLK(T)
 BD: 4/3/2013 Tattoo: LNLM501A Reg. LFF2031563

CED	BW	WW	YW	MA	CEM	SC	DOC	CW	RE	YG	MARB	\$MTI
8	1.0	57	111	33	5	0.1		44	-0.12	0.48	0.33	56

MAGS WINSTON
 MAGS EAGLE
 MAGS WEB OF DECEIT

BT CROSSOVER 758N
 MAGS STRAWBERRY
 AUTO DOLLAR GENERAL 122R
 CABIN CREEK BEHAVE 6040

Act. BW 66
 Adj. WW 691
 Adj. YW
 Adj. SC
 Adj. REA
 Adj. IM

S A V NET WORTH 4200
 PBR UNBELIEVABLE 8149U
 WLR RENDEZVOUS 050R

S A V 8180 TRAVELER 004
 S A V MAY 2410
 GPFF BLAQUE RULON
 KEHG JULIET 10H

Consigned by Linden Linthicum and JCL Land and Cattle, Welch, OK

JCL Wildflower LNLM 501A is half-sister to JCL Katniss LNLM 207Z, the Grand champion female of the National Junior Heifer Show, All American Futurity and the American Royal shows. JCL Wildflower is one gorgeous female from the heart of the Linden Linthicum program. She is sired by the MAGS Winston son, MAGS Eagle and is one big numbered 50% Lim-Flex heifer. She offers a 1.0 for birth, 111 for yearling weight, 33 for milk and .33 for marbling. We admire her feminine and maternal look as well as her balance and prominent profile.



15

30 Units of MAGS USDA CHOICE

LIM-FLEX(50/45.0) BULL HOMO PLD(P) HOMO BLK(T)
 BD: 2/8/2008 Tattoo: MAGS2663U Reg. LFM1906572

CED	BW	WW	YW	MA	CEM	SC	DOC	CW	RE	YG	MARB	\$MTI
13	-1.0	50	103	40	8	0.4	8	43	-0.03	0.45	0.69	67

LVLS SECRET WEAPON 4408K
 AUTO DOLLAR GENERAL 122R
 AUTO KYRIA 232K

LVLS FARMER 4G
 LVLS 408H
 AUTO HACKETT 702H
 WULFS HAPPINESS 8136H

Act. BW 75
 Adj. WW 754
 Adj. YW 1362
 Adj. SC
 Adj. REA 17.3
 Adj. IM 5.55

BON VIEW NEW DESIGN 1407
 HA LADY 1079
 DF LADY 7030

B/R NEW DESIGN 036
 BON VIEW PRIDE 664
 GAR PRECISION 1680
 PAF LADY CAP 2134

Consigned by Double A Limousin, Shawnee, KS & Lawrence Family Limousin, Anton, TX.
 Selling 30 units of semen. Here is the only semen that will be available in 2014 on the recently deceased AI sire, MAGS USDA Choice. USDA Choice is a proven bull with curve bending growth numbers combined with outstanding milk and marbling. One of his first daughters was a sale feature at the All American Sale of Sales and sons have been trading well across the land. Don't miss this one and only opportunity to buy semen on this maternal and carcass trait leader in 2014.



Flushes/Embryos

16

Rights to Flush MAGS WASSAIL

PUREBRED(100/89.5) COW HOMO PLD(T) HET BLK(T)
BD: 9/3/2009 Tattoo: MAGS9706W Reg. NPF1957616

CED	BW	WW	YW	MA	CEM	SC	DOC	CW	RE	YG	MARB	\$MTI
4	1.7	59	104	33	1	1.0	14	28	0.63	-0.10	-0.04	47

GPF BLAQUE RULON
DHVO DEUCE 132R
AMY JO DHAN 20L

BLACK DIAMOND
QUAIL RUN RAMONA BP
BLACK CAT DHAN 152G
GPF AMBER JO

EXLR DAKOTA 353G
MAGS MANDA
MAGS JEWEL

WULF'S COUNT DOWN 9251C
CANE RIDGE DAPHNE 011D
CHAZ FIRST CHOICE 6004F
MAGS DANCING FOR MONEY

Consigned by JB Ranch and Linhart Limousin, Leon, IA

Flush to the bull of the buyer's choice - 6 embryos guaranteed (12 embryo maximum)

Don't miss this rare opportunity to invest in the proven donor and 2011 All American Futurity grand champion female. Visually she combines a high degree of structural integrity and depth of body in an attractive made package. Notice her WW, YW, MA, SC and \$MTI all rank in the top 10% of the breed or better. Her first heifer calf offered at auction, LLJB Absolute Style 3056A, brought \$20,000 and first bull calf ever offered at auction is lot 2.



Daughter of
MAGS Wassail



MAGS Wassail

17

Rights to Flush SBLX MARIA 662Y

LIM-FLEX(50/45.2) COW POLLED HET BLK(T)
BD: 5/10/2011 Tattoo: SBLX662Y Reg. LFF1984896

CED	BW	WW	YW	MA	CEM	SC	DOC	CW	RE	YG	MARB	\$MTI
9	1.9	59	106	41	5			35	-0.34	0.47	0.39	58

SAV 004 PREDOMINANT 4438
SAV PROVIDENCE 6922
SAV MAY 7238

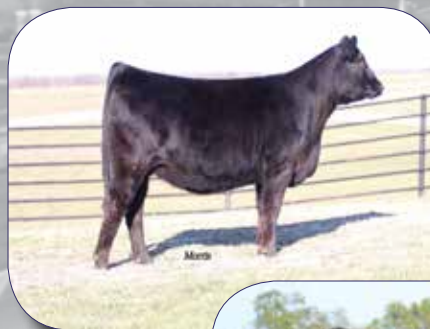
SAV 8180 TRAVELER 004
SAV EMBLYNETTE 1182
LEACHMAN RIGHT TIME
SAV PROSPECTOR MAY 9124

EXLR LIMITED EDITION 765J
MAGS MANUELA
AUTO CITY NIGHTS 214H

EXLR POLLED BENCHMARK709G
WULFS GLENDA 7021G
COLE FIRST DOWN 46D
MISS WOLFETTE 9049X

Consigned by Riverside Valley Limousin, Hohenwald, TN & Sugar Bush Cattle, Inc., Allen, MI
Flush to the bull of the buyer's choice - 7 embryos guaranteed.

Here is your chance to create future progeny from one of the greatest daughters to ever come from the famed MAGS Manuela 662M, SBLX Maria 662Y. She is a huge numbered 50% Lim-Flex daughter of SAV Providence 6922. She has a breed leading milk number of 41, yearling weight of 106, marbling of .39 and MTI of 58. She scanned a 10.8 for REA and 3.19 for IMF. This \$30,000 valued female is made absolutely perfect, long necked, strong topped and very appealing in her profile. Her first calf sold for \$12,800 and is now in the Sugar Bush and Stowers program.



SBLX Maria 662Y



MAGS Manuela
Dam of SBLX Maria 662Y

18

SAV Brand Name X EF Yadda Yadda

6 EMBRYOS

LIM-FLEX (50/44.9) DBL PLD DBL BLK

CED	BW	WW	YW	MA	CEM	SC	DOC	CW	RE	YG	MARB	\$MTI
6	1.9	69	121	33	0		10	52	0.21	-0.09	0.13	55

SAV BISMARCK 5682
SAV BRAND NAME 9115
SAV BLACKCAP MAY 5530

GAR GRID MAKER
SAV ABIGALE 0451
BCC BUSHWACKER 41-93
SAV MAY 7238

DHVO DEUCE 132R
EF YADDA YADDA 809Y
MAGS RUFFLES

GPF BLAQUE RULON
AMY JO DHAN 20L
TNUH BLUE PRINT 245H
MAGS LADY DOCTOR

Consigned by Aaron Linhart, Leon, IA

Unique, predictable and profitable best describes this genetic combination. The mating features service by the SAV Brand Name angus A.I. sire that recently produced a \$20,000 Lim-Flex daughter which highlighted the Stars and Stripes Sale in Kentucky, offered by the progressive Pinegar Limousin program. The purebred donor female EF Yadda Yadda 809Y has proven to be a can't miss female in production and in the show-ring claiming many titles including the 2012 grand champion banner at the 2012 MAGS Junior Jackpot Show. Bottom-line is, this mating projects to produce high quality offspring that will have a WW figure in the top 1%, YW in the top 3% and milk in the top 15%. The math simply adds up; don't miss this buying opportunity sale day.



Daughter of
SAV Brand Name 9115



EF Yadda Yadda 809Y

19

Ivy'S Marksman X Wulfs Soloist

6 EMBRYOS

PUREBRED(96/90.2) DBL PLD RED

CED	BW	WW	YW	MA	CEM	SC	DOC	CW	RE	YG	MARB	\$MTI
13	1.0	63	107	33	8	0.4	31	33	0.67	-0.09	0.17	56

ROMN TUFF ENUFF 103T
IVY'S MARKSMAN HTZ 10Z
IVY'S XPECT THE BEST 47X

WULFS RANSOM 3059R
ROMN ROBERTA 35R
WULFS REVOLVER 1219R
IVY'S POLLED PRINCESS 1P

WULFS NOBEL PRIZE 3861N
WULFS SOLOIST 6284S
WULFS JOY BELLS 9202J

COLE WULF HUNT
WULF'S CASUAL 3161C
WULFS EVAN 9052E
WULFS ENJOYABLE 5009E

Consigned by Wulf Cattle, Morris, MN

For the first time ever on a national stage, genetics by one of the most popular and prolific donor females in the history of the Wulf Cattle Company program is on offer - Wulfs Soloist 6284S. She is the dam of many high selling bulls at Wulf Cattle Company's annual sale including the \$42,000 Wulfs Yankee. Also, genetics by the imported Ivy's Marksman sire is not available in the USA. The bottom-line is, opportunity abounds with this truly rare outcross genetic mating that projects to have red, polled, purebred progeny that boast figures ranking in the top 10% or better for WW, YW, MA, DOC and marbling.



Ivy's Marksman HTZ 10Z



Wulfs Soloist 6284S

20

EBFL Ypsilanti X AUTO Poem

7 EMBRYOS

LIM-FLEX (50/45.7) HOMO PLD DBL BLK

CED	BW	WW	YW	MA	CEM	SC	DOC	CW	RE	YG	MARB	\$MTI
8	0.3	60	109	35	3	0.4	6	44	0.18	0.11	0.26	57

TC ABERDEEN 759
EBFL YPSILANTI 420Y
MAGS RAMADA

C R A BEXTOR 872 5205 608
TC BLACKBIRD 4034
TNUH BLUE PRINT 245H
MAGS MANDA

S A V BISMARCK 5682
AUTO POEM 273Y
MAGS PHANTOMS PRIZE

G A R GRID MAKER
S A V ABIGALE 0451
GPFF BLAQUE RULON
ALCM KOOL TUNES

Consigned by Edwards Land & Cattle Co., Beulaville, NC

Featured in the 2014 National Limousin sale will be these future calves from the heart of the ELCX program. Sired by the \$100,000 and complete outcross sire EBFL Ypsilanti 420Y and from our \$20,000 purchase in the '13 Pinegar sale, AUTO Poem 273Y. She is a big footed, sound made and very appealing SAV Bismarck daughter from the famed MAGS Phantoms Prize donor and dam of the Triple Crown Winning bull MAGS WLR Usual Suspect.



EBFL Ypsilanti 420Y



AUTO Poem 273Y

LIVE ON THE INTERNET. LIVE AUDIO. LIVE VIDEO. BIDDING

LiveAuctions TV

To register and follow the auction in real time on the internet, log on to Website: <http://www.liveauctions.tv>
For More Information, call Brad Fahrmeier at (816) 392-9241
If you wish to follow the sale on the computer and bid by telephone, please call the sale day phone numbers or one of the consultants listed in our catalog.
"We appreciate your attendance"

Which ONE would you PICK?

Corner Post Fund
nalja

For the 2014 Corner Post Package, Bob and Gwen Minerich of Minerich Land & Cattle Co., Richmond, Kentucky, have graciously donated pick of their 2013 naturally calved heifers. This will be a pick from 100 fall-born 2013 heifer calves sired by Red Canyon, Wulfs Yankee, MAGS Yip, Connealy Consensus 7229, SYES User Friendly and others. The buyer will make their choice at weaning, in April of 2014. Look over the pictures—MINE prefix cattle from previous crops—and think about how it can help your program, help the juniors and have a little fun in the process.



Corner Post Fund
nalja

for more information, contact...

Bret Begert - 806/375-2345 Kaye Weaber - 860/716-3626
 bhbegert@hughes.net kaye@nalf.org

Corner Post Package Includes Complimentary Services by these Generous Companies...

...Grassroots Insurance & American Livestock Insurance
 Six months full mortality insurance.
 5 units of semen on Grassroots Genetics bulls.

...Agri-Exposure
 Free trucking within 500 miles of Minerich.

Minerich Land & Cattle Co. TB-Free Herd

Bob & Gwen Minerich, Owners (859) 582-6888, Bob-cell
 2003 Barnes Mill Road • Richmond, KY 40475
 Office: (859) 328-7118 • Fax: (859) 328-7120
 Mark Smith, Herd Consultant (515) 965-1458

The parade of sale cattle will take place on Tuesday, January 14, at 3:00 P.M.
at the NWSS Stadium Arena.

Lim-Flex Bulls

Lot #	Name	Birth Date	Consignor
Class 1			
1.	ENGD ACCELERATOR 3512A	3/5/2013	Englewood Farm, Lancaster, KY & Quaker Hill Farm, Louisa, VA
2.	CJSL ABSOLUTE 3138A	3/14/2013	Linhart Limousin, Leon, IA
3.	TASF APPLIED FORCE 744A	3/25/2013	Thomas and Son Farms, Boonsboro, MD

Grand Champion Lim-Flex Bull: _____ Reserve Champion Lim-Flex Bull: _____

Limousin Females

Class 2			
4.	CYWD ZADA 24Z	4/2/2012	Woodard Limousin, Calhan, CO
Class 3			
5.	LH ZELMA ANN 156Z	9/19/2012	Hall Cattle Company, Sweetwater, TX
Class 4			
7.	VL ARIAL 335A	3/19/2013	Vorthmann Limousin, Treynor, IA
8.	LFL ALLISON 3043A	5/5/2013	Lawrence Family Limousin, Anton, TX

Grand Champion Limousin Female: _____ Reserve Champion Limousin Female: _____

Lim-Flex Females

Class 5			
6.	MAGS ZIPORA	3/19/2012	Magness Land and Cattle, Platteville, CO
Class 6			
9.	ELCX KNOWING 303Z	11/1/2012	Pinegar Limousin, Springfield, MO & Sugar Bush Cattle, Inc., Allen, MI
Class 7			
10.	ENGD ATHENA 3006A	2/11/2013	Englewood Farm, Lancaster, KY
11.	LFL ALICIA 3014 A	2/23/2013	Edwards Land & Cattle Co., Beulaville, NC & Lawrence Family Limousin, Anton, TX
12.	LH ALIBI 014A	2/28/2013	Hall Cattle Company, Sweetwater, TX
Class 8			
13.	JCL UNDYING LOVE 624A	3/3/2013	JCL Land and Cattle, Welch, OK
14.	JCL WILDFLOWER LNLM 501A	4/3/2013	Linden Linthicum & JCL Land & Cattle, Welch, OK

Grand Champion Lim-Flex Female: _____ Reserve Champion Lim-Flex Female: _____

CONSIGNORS

Aaron Linhart	Leon, IA	641.340.1306
Double A Limousin	Shawnee, KS	913.558.7966
Edwards Land & Cattle Co.	Beulaville, NC	910.298.3012
Englewood Farms	Lancaster, KY	859.533.1301
Hall Cattle Company	Sweetwater, TX	325.235.4345
JB Ranch	Leon, IA	641.340.1306
JCL Land & Cattle	Welch, OK	918.533.0445 (text)
Lawrence Family Limousin	Anton, TX	806.790.2535
Linden Linthicum	Welch, OK	918.533.0445 (text)
Linhart Limousin	Leon, IA	641.340.1306
Magness Land & Cattle	Platteville, CO	970.785.6170
Pinegar Limousin	Springfield, MO	417.833.2688
Quaker Hill Farm	Louisa, VA	540.894.3523
Riverside Valley Farm	Hohenwald, TN	931.628.6730
Sugar Bush Cattle, Inc.	Allen, MI	517.937.3399
Thomas and Son Farms	Boonsboro, MD	301.730.9561
Vorthmann Limousin	Treynor, IA	402.981.1621
Woodard Limousin	Calhan, CO	719.439.2011
Wulf Cattle	Morris, MN	320.392.5802

**Delivery guaranteed to cost no more than \$300 to
central points anywhere in the continental United States
through Lathrop Trucking, Inc. Randy Lathrop, 847.426.5009.**

LIMOUSIN

NORTH AMERICAN LIMOUSIN FOUNDATION

6 Inverness Court East, Suite 260

Englewood, Colorado 80112-5595

(303) 220-1693 • www.nalf.org