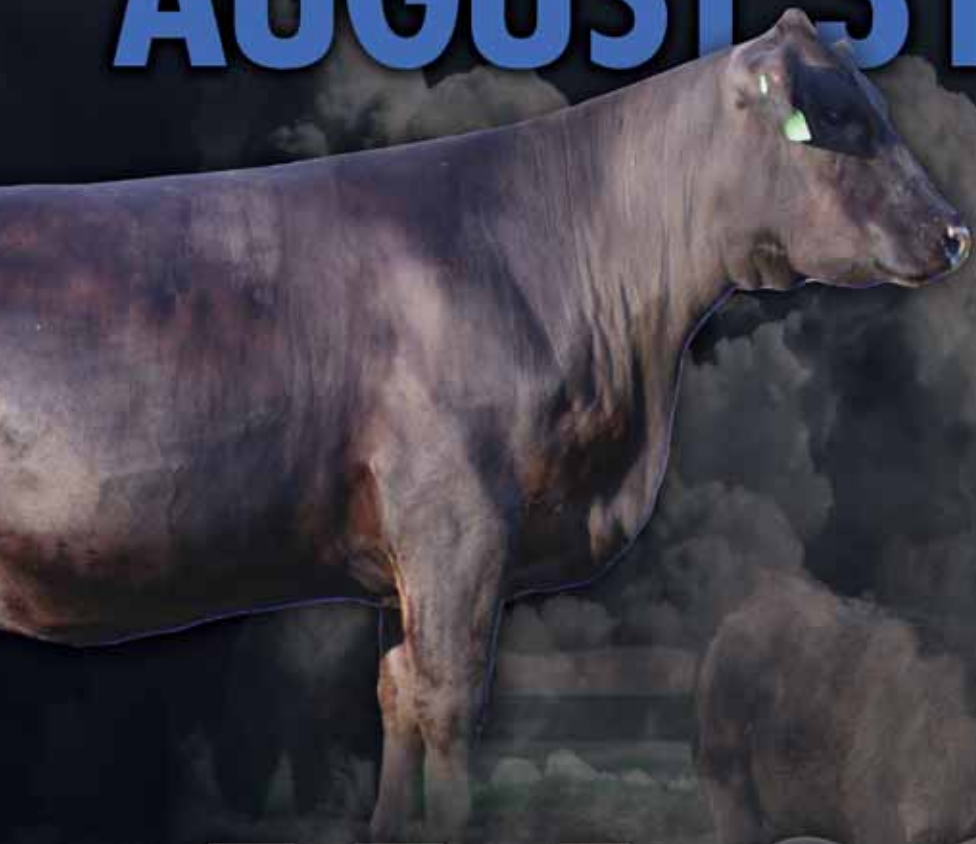
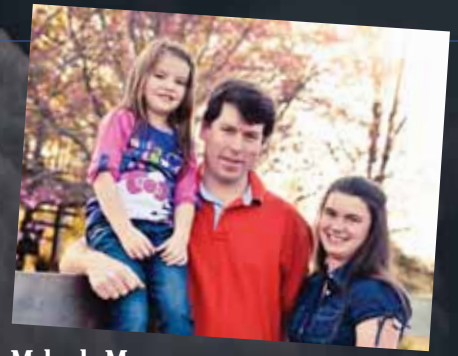


AUGUST 31, 2013



MASSEY
limousin

MASSEY limousin



Joey, Melissa & Makayla Massey
80 Sublimity School Rd., London, KY 40744
606.877.5571 • cell: 606.682.2126 • josephlimassey@yahoo.com

Donnie & Barbara Massey
1253 Old Whitley Rd., London, KY 40744
606.864.6961 • cell: 606.682.2125

SCHEDULE OF EVENTS ...

Friday, August 30th

Noon Cattle available for viewing
6:00 p.m. Refreshments

Saturday, August 31st

8:00 a.m. Cattle available for viewing
Coffee and Pastries

11:00 a.m. Complementary Lunch

12:30 p.m. Massey Limousin Sale starts

SALE DAY PHONES ...

If you have any questions on the sale/cattle feel free to call any of us, it would be our pleasure to assist you with your purchases.

Joey Massey.....606.682.2126
Melissa Massey606.309.2265
Donnie Massey606.682.2125
Randy Ratliff615.330.2735

DIRECTIONS ...

Address: 80 Sublimity School Rd., London, KY
From I-75, take Exit 38, London, KY, for KY Hwy. 192. Go East on KY-192 for 0.3 miles. Run Right on to Old Whitley Road/Sublimity School Road. Proceed for 1.5 miles (Continue straight, through the 4-way stop), turning left to stay on Sublimity School Rd. The farm is immediately on the left.

ACCOMMODATIONS ...

Hampton Inn North606.864.0011
200 Alamo Dr., London, KY
Baymont Inn606.877.1000
2075 Hwy. 192 W, London, KY

AUCTIONEER ... Cody Lowderman

ANNOUNCEMENTS ...

Announcements at the sale by the owners, auctioneers or sale management will take precedence over statements in the sale catalog.

TRUCKING ...

Will be available on site to haul any purchases out the day of the sale. To make prior arrangements feel free to call R & R Marketing Co. at 615.330.2735 and we will make your buying easy and accommodating.

PAYMENT ...

Cattle must be paid for at the time of the sale. Unless prior arrangements are made with sale management at the time of the sale at 615.330.2735.



SALE ORDER & SUPPLEMENTAL INFORMATION ...

Sale order and supplement sheet information will be post-ed Friday, August 30th, at www.RRMktg.com.

TERMS & CONDITIONS ...

Terms of the sale are cash unless satisfactory credit arrangements have been made prior to the sale. A representative will be on hand sale day if your wishes are to insure your purchases. Please note: The sale manager is only an agent for the seller and has no responsibility other than those involved in conducting the sale. All persons who attend the sale do so at their own risk. Neither the sale manager nor Massey Limousin assume liability, legal or otherwise for, any accidents which may occur.

SALE MANAGEMENT ...

**R&R
Marketing Company**

Randy Ratliff, 615.330.2735
PO Box 281677, Nashville, TN 37228
Randy@RRmktg.com • www.rrmktg.com



(L#2845)

6th ANNUAL PRODUCTION SALE
AUGUST 31, 2013

at 12:30 PM EST • at the farm, London, KY

Selling 73 Head & 50 embryos ...

38 Fall Bred Heifers • 29 Fall Bred Cows • 6 Open Heifers

*Featuring the entire
fall calving cowherd*





Morris

LOT 1 - RVDR Ultima 8202U

1 RVDR ULTRA ANNIE 2802U

Lim-Flex (50) Cow Double Polled Homo Black RVDR 2802U 10.07.08 LFF 1933499

S A F FOCUS OF E R
MYTTY IN FOCUS
 MYTTY COUNTESS 906
 AUTO BLACK DAKOTA 129J
MCBN MAZIE 702M
 AUTO JULIANA 226J

S A F FAME
 G D A R FOREVER LADY 246
 SITZ ALLIANCE 6595
 BALDRIDGE COUNTESS 357
 EXLR DAKOTA 353G
 DFLC JET SET BPC 34Y
 WULFS GUARDIAN 5074G
 EXLR LUVLY 087F

	CED	BW	WW	YW	MA	CEM	SC	ST	DOC	CW	REA	YG	MARB	SMTI
EPDs	13	-2.9	47	94	24	5	0.5	16	25	21	-0.19	0.39	0.25	50
	20	35	29	20	23	20	P	P	P	23	22	22	22	

- A.I. 3.29.12 to MAGS Xyloid
- Owned with Milam Cattle Co., Olmstead, KY
- One of the features of the sale is this proven donor owned with our good friend Chris Milam of Milam Cattle Co.
- She is a 50% daughter of Mytty In Focus that goes back to a daughter of AUTO Black Dakota 129J
- This prolific donor posts a low birth of -2.9, 24 for milking ability and .25 for marbling. She posts scan data of 12.7 for REA and 2.89 for IMF
- This 50% Lim-Flex is super sound in her structure and very complete in her design. We love her femininity up through her front end, strength of topline and squareness out of her hip
- Her mating to the once All American Futurity champion bull MAGS Xyloid will create a very appealing and exciting calf



Morris

LOT 2 - LH Ya'll CM BK Now 186Y

2 LH YA'LL CM BK NOW 186Y

Lim-Flex *25) Cow Homo Polled Homo Black LCHA 186Y 09.15.11 LFF 2006023

BR MIDLAND
MAGS STOCKMAN
 MINE PLD QUEEN SHEBA9006J
 KCF BENNETT COALISTION SC
FALCON PRIDE 501
 SUMMITCREST PRIDE 2J47

TWIN VALLEY PRECISIONE161
 BR ROYAL LASS 7036-19
 COLE FIRST DOWN 46D
 CANE RIDGE SOUTHERN TIMES
 SITZ ALLIANCE 6595
 PLEASANT POLL OF CONANGA
 N BAR EMULATION EXT

	CED	BW	WW	YW	MA	CEM	SC	ST	DOC	CW	REA	YG	MARB	SMTI
EPDs	9	-1.4	42	85	26	3	0.3	-	-	39	-0.67	0.76	0.75	64
	P	32	19	13	13	P	P	-	-	19	17	17	17	

- A.I. 2.08.13 to EBFL Ypsilanti 420Y
- Homozygous polled and homozygous black
- One of the true highlights of the sale!
- Sired by the BR Midland x COLE First Down son, MAGS Stockman and from a proven Angus female, Falcon Pride 501
- She is not only perfect in her conformation she is also one of the biggest marbling numbers female in the entire breed with a .75 for marbling. She also scanned a 4.77 for IMF and REA of 13.04
- She sells carrying the service to the EBFL Ypsilanti 420Y, the \$100,000 valued sire and leading sire for Stowers, Sugar Bush, Milam and Salt Creek Cattle Co.



LOT 3 - LH Yankee Gal 113Y



LOT 4 - PBRs 270X

3 LH YANKEE GAL 113Y
 Lim-Flex (50) Cow Homo Polled Homo Black LCHA 113Y 09.20.11 LFF 2002694

HUNTS HI-LITER 245G
JCL LODESTAR 27L
 LOGAN'S CHEERLEADER 280G
 G A R RETAIL PRODUCT
SITZ RLS EISA EVERGREEN 4
 SITZ RLS EISA EVERGREEN 3

WADDLES COBALT 3106
 TNUH MISS C245
 COLE FIRST DOWN 46D
 TTCC CONFIDENCE MAKER
 GAR PRECISION 1680
 G A R EXT 4927
 SITZ VALUE 7097
 SITZ RLS EISA EVERGREEN 1

EPDs	CED	BW	WW	YW	MA	CEM	SC	ST	DOC	CW	REA	YG	MARB	SMTI
14	-0.4	54	112	26	9	0.4	-	-	45	-0.37	0.61	0.42	57	
20	35	29	20	21	19	14	-	-	23	22	22	22		

- A.I. 1.23.12 to EBFL Ypsilanti 420Y
- Homozygous polled and homozygous black
- In our breed there is nothing any better than JCL Lodestar 27L crossed with Angus. This young female goes back to a daughter of GAR Retail Product on the dam's side of her pedigree.
- She scanned a 14.81 for REA and 4.22 for IMF and is one super big numbered heifer in the sale with a 112 for yearling weight, 26 for milk, .42 for marbling and 57 for MTI
- Her resulting calf sired by EBFL Ypsilanti 420Y will be a double homozygous 50% Lim-Flex and will have some of the biggest numbers of any in the breed

4 PBRs 270X
 Lim-Flex (50) Cow Homo Polled Homo Black PBRs 270X 03.08.10 LFF 1960298

WULFS RANSOM 3059R
SYES USER FRIENDLY 524U
 MISS SYES JUSTICE 224S

WULFS NASA 1212N
 WULFS NOBILITY 3059N
 ROMN JUSTICE
 MISS SYES FARMER 225P
 CONNEALY DATELINE
 PLATTEMERE REVA 109
 O C C BACKSTOP 888B
 SEDGWICKS GEORGINA 14

PLATTEMERE DATABASE
SEDGWICKS GEORGINA 4792
 SEDGWICKS GEORGINA 4796

EPDs	CED	BW	WW	YW	MA	CEM	SC	ST	DOC	CW	REA	YG	MARB	SMTI
11	-2.4	38	80	27	3	0.5	-	-	34	-0.17	0.51	0.26	47	
20	36	30	19	17	19	13	-	-	18	16	16	16		

- P.E. 11.01.12 to 3.01.13 to LVLS 3202U
- Homozygous polled and homozygous black
- This could be the outcross donor we have been waiting to find. She is sired by SYES User Friendly, the leading son of Wulf's Ransom back to a daughter of ROMN Justice
- She is so lone bodied, level out of her rump and very soft in her pasterns
- We love her number package with a -2.4 for birth, 27 for milk, .51 for yield grade and .26 for marbling
- She sells bred for 50% Lim-Flex calf sired by the huge numbered Con View New Design 1407 son, LVLS 3202U



LOT 5 - CFLX Secret Lady 133Y



LOT 6 - ENGD Red Flex 090X

5 CFLX SECRET LADY 133Y

Lim-Flex (25) Cow Double Polled Double Black CFLX 133Y 04.09.11 LFF 1995629

B C MARATHON 7022
BC 7022 RAVEN 7965
 O C C BLACKBIRD 796F

LVLS SECRET WEAPON 4408K
FULC TOP SECRET 202T
 E&B LADY POWER ALLIANCE

OCC KIRBY 633K
 GIBBET HILL MIGNONNE E37
 O C C BONANZA 880B
 O C C BLACKBIRD 779A
 LVLS FARMER 4G
 LVLS 408H
 H A POWER ALLIANCE 1025
 E&B LADY 1483 SCOTCHMAN

	CED	BW	WW	YW	MA	CEM	SC	ST	DOC	CW	REA	YG	MARB	SMTI
EPDs	-	0.6	53	102	28	-	-	-	-	23	-0.45	0.53	0.50	60
	-	P	P	P	P	-	-	-	-	P	P	P	P	

- P.E. 12.11.12 to 4.04.13 to SEEE You Got It
- Here is top 25% Lim-Flex female that we are certain in any great cattleman will appreciate. She is sired by BC Raven and from the leading CFLX donor, FULC Top Secret 202T and daughter of LVLS Secret Weapon
- She has the brood cow look all over her and she has a set of EPD's that we just you are going to appreciate. She offers a 102 for yearling weight, 28 for milk and .50 for marbling
- We really admire the maternal look and fleshing ability of this young female

6 ENGD RED FLEX 090X

Lim-Flex (50) Cow Double Polled Red ENGD 090X 09.11.10 LFF 1978964

ENGD POLLED LIBERTY 283R
ENGD UNBRIDLED 832U
 LENAPE APHID

BVF CRK HOBO 1961
JECA N283
 LMAN SARAH 9183

LENAPE POLLED LIBERTY
 ANLC 10H
 LENAPE WASATCH
 QUAIL RUN LADYBUG
 BVF CRK HOBO 1413
 BVF CR CARRIE VC 1174
 LEACHMAN FRONT RUNNER
 LEACHMAN SARAH 7588

	CED	BW	WW	YW	MA	CEM	SC	ST	DOC	CW	REA	YG	MARB	SMTI
EPDs	6	2.5	65	102	17	1	0.3	-	-	62	-0.22	0.38	0.53	65
	P	30	24	20	9	P	9	-	-	18	16	16	16	

- P.E. 11.01.12 to 3.01.13 to LVLS 3202U
- This red, double polled heifer is uniquely bred and offers a complete outcross the established Lim-Flex lines of cattle. She is sired by the polled fullblood sire ENGD Unbridled 832U and from a proven Englewood Farm Red Angus female
- She scanned a 4.45 for IMF and .53 for marbling and 65 for MTI. She also posts a 65 for weaning weight and 102 for yearling weight
- She is big middle, soft made performance oriented 50% Lim-Flex female that is certainly a highlight in this annual event for Massey Limousin



Morris

LOT 7 - AUTO Sugar 256Y

7 AUTO SUGAR 256Y

Lim-Flex (75) Cow Double Polled Homo Black AUTO 256Y 09.12.11 LFF 2001764

DHVO DEUCE 132R
 GPFf BLAQUE RULON
 AMY JO DHAN 20L
 JCL LODESTAR 27L
LEWIS SELENA 216S
 AMEN WENDYS LASS 380
 BLACK DIAMOND
 QUAIL RUN RAMONA BP
 BLACK CAT DHAN 152G
 GPFf AMBER JO
 HUNTS HI-LITER 245G
 LOGAN'S CHEERLEADER 280G
 S A F FOCUS OF E R
 AMEN WENDYS LASS 246

	CED	BW	WW	YW	MA	CEM	SC	ST	DOC	CW	REA	YG	MARB	SMTI
EPDs	10	1.1	62	111	23	4	0.9	-	22	55	0.21	0.27	0.17	53
	P	P	P	P	P	P	P	-	P	23	23	23	22	

8 CJLM HEARTLAND 408X

Lim-Flex (44) Cow Polled Black CJLM 408X 09.10.10 LFF 1988397

BR MIDLAND
 TWIN VALLEY PRECISIONE161
 BR ROYAL LASS 7036-19
 LVLS POLLED JUSTICE 0601E
LVLS 408H
 LVLS MISS STABILIZER 1408E
 GAR PRECISION 1680
 WCC BLACKCAP C9
 S A F NEUTRON
 S A F ROYAL LASS 7036
 LVLS POLLED BLACK JACK
 LVLS JENI 601V
 MAYS BLACK JET
 LVLS 408X

	CED	BW	WW	YW	MA	CEM	SC	ST	DOC	CW	REA	YG	MARB	SMTI
EPDs	8	-0.2	48	93	24	6	0.8	13	13	31	-0.30	0.49	0.51	59
	P	33	26	22	25	P	P	P	P	P	P	P	P	P

- P.E. 11.15.12 to 3.15.13 to MAGS Unparalleled
- This 43.5% Lim-Flex female is one of the biggest numbered of any that are selling
- Sired by the premier Angus sire BR Midland and from the prominent Limousin donor for Brown Land & Cattle Co, LVLS 408H, the dam of one of the biggest numbered bulls in the breed, LVLS Secret Weapon
- This young female posts a -0.2 for birth, 93 for yearling, 24 for milk, .51 for marbling and 59 for MTI

- Due 9.14.13 to AUTO Grand Am
- Here is a top bred heifer that is for sure a highlight of the sale
- Sired by DHVO Deuce and from the elite P Bar S donor, Lewis Selena 216S
- She is double polled, homozygous black and is picture perfect in her profile
- She posts a 1.1 for birth, 62 for weaning, 111 for yearling, .17 for marbling and she scanned a 4.76 for IMF
- She sells bred to the big numbered '12 All American Futurity grand champion and leading sire for Godfrey Cattle Co., AUTO Grand Slam

9 PBRS 10X

Lim-Flex (50) Cow Homo Polled Double Black PBRS 10X 02.18.10 LFF 1960313

WULFS TITUS 2149T
 WULFS REALTOR 1503R
 WULFS MEADOW GRASS 2149M
 HUNT MR JOCK 44J
 WULFS LENA 1503L
 WULFS GOLIATH 2453G
 MISS WULFETTE 9062J
 HOMEACRES PLATINUM 723
HOMEACRES GILDA D50
 HOMEACRES GILDA 978
 G D A R OSCAR 711
 HOMEACRES HANA 103
 D F SLEEP TIGHT 5121
 OMEACRES GILDA 935

	CED	BW	WW	YW	MA	CEM	SC	ST	DOC	CW	REA	YG	MARB	SMTI
EPDs	7	-1.0	43	80	19	1	0.3	-	13	29	-0.16	0.36	0.28	50
	21	35	30	20	19	20	13	-	P	22	21	21	20	

- P.E. 11.15.12 to 3.15.13 to MAGS Unparalleled
- This black, homozygous polled daughter of Wulf's Titus is from a Angus cow
- She is very moderate in her frame, easy in her condition and sound in her structure
- This 50% Lim-Flex heifer is from the heart of the Massey replacement pen and we think you will appreciate her on sale day
- She sells bred to the once MOE medal winning bull, MAGS Unparalleled



10 EXLR BELL 047X

LOT 10 - EXLR Bell 047X

Lim-Flex (50) Cow Homo Polled Homo Black EXLR 047X 03.01.10 LFF 1951201

BR MIDLAND
EXAR TITLELIST T011
 EXG BLACKCAP R054 R3

GPFf BLAQUE RULON
AUTO BELL 204R
 STBR DEMETRIA 669D

TWIN VALLEY PRECISIONE161
 BR ROYAL LASS 7036-19
 EXAR SUDDEN IMPACT 1537
 EXG BLACKCAP N145 R3
 BLACK DIAMOND
 QUAIL RUN RAMONA BP
 WRC PUNCH
 STBR WENDY'S KIMMIE 194A

	CED	BW	WW	YW	MA	CEM	SC	ST	DOC	CW	REA	YG	MARB	SMTI
EPDs	7	0.2	47	90	24	2	-	-	5	63	0.25	0.36	0.37	55
	15	35	24	20	19	14	-	-	P	P	P	P	P	

- P.E.12.01.12 to 5.15.13 to BOHI Titlelist 7050T
- This 50% Lim-Flex female is homozygous polled, homozygous black and one terrific female
- She is sired by EXAR Titlelist T011 and from a daughter of GPFf Blaque Rulon back to the leading Pinegar donor STBR Demetria
- She has earned a 0.2 for birth, 90 for yearling, 24 for milk and .37 for IMF
- She sells bred to the leading Massey service sire BOHI Titlelist 7050T, a son of AUTO Dollar General 122R back to the once national champion female Carroulens Pinsa Colada

10 EXLR BLACK CAP 142X

12 RVDR XTRA TIME 643X

Lim-Flex (44) Cow Double Polled Double Black EXLR 142X 04.30.10 LFF 1965903

% Limousin (81) Cow Homo Polled Homo Black RVDR 643X 10.05.10 NXF 1985597

EXAR LUTTON 1831
EXAR SPARTAN 6225
 WK WINNIE 7305

LESF ASPHALT 9N
EXLR BLACK CAP 7117R
 EXLR BLACKCAP 437K

NORTHERN IMPROVEMENT 4480
 EXAR SARAS DREAM 9809
 KRUGERRANDS MONEYLINE
 WK WINNIE 5460
 GPFf BLAQUE RULON
 GPFf EXTRA SWEET ELITE
 EXLR POLLED RESOLVE 175G
 EXLR 5118H

EXLR POLLED RESOLVE 175G
EXLR EXCELLANTE 251L
 EXLR 199H

JCL LODESTAR 27L
FULC 900R
 KRVN NICE GIRL 303N

KRMC BLACK LEGACY 917B
 LKCC SMITH CATTLE 110C
 WULFS FANFARE 4055F
 EXLR 558F
 HUNTS HI-LITER 245G
 LOGAN'S CHEERLEADER 280G
 GPFf BLAQUE RULON

	CED	BW	WW	YW	MA	CEM	SC	ST	DOC	CW	REA	YG	MARB	SMTI
EPDs	7	1.9	51	91	29	-2	0.5	-	7	18	-0.61	0.46	0.24	50
	P	P	P	P	P	P	P	-	P	P	P	P	P	

	CED	BW	WW	YW	MA	CEM	SC	ST	DOC	CW	REA	YG	MARB	SMTI
EPDs	10	0.5	45	83	21	3	1.0	-	-	35	0.33	0.05	0.08	46
	P	35	24	18	19	P	P	-	-	23	22	22	22	

- Due 9.01.13 to Legacy's Yadi
- This 43.5% Lim-Flex brood cow is super big boned, sound in her structure and very eye appealing
- Sired by the EXAR Lutton son, EXAR Spartan 6225 and from a daughter of LESF Asphalt
- We appreciate the over all mass and substance that this female has

- P.E. 11.01.12 to 3.01.13 to LVLS 3202U
- Homozygous polled, homozygous black and one of the real nice replacement females of the sale
- Sired by the leading purebred sire EXLR Excellante 251L and from the JCL Lodestar 27L donor FULC 900R that is working for Englewood Farm
- This female represents a very strong and current pedigree with two of the leading sires in her pedigree



Morris

PBRS Timeless 247T, dam of Lot 13.

13 RVDR XTRA SHY 657X

Lim-Flex (75) Cow Homo Polled Homo Black RVDR 657X 10.13.10 LFF 1986653

DHVO DEUCE 132R
CFLX WILD CARD
 JCL PEPPERMINT
 JCL LODESTAR 27L
PBRS TIMELESS 247T
 SEDGWICKS BLACKAP 4364

GPFF BLAQUE RULON
 AMY JO DHAN 20L
 AUTO BLACK DAKOTA 129J
 JCL PEPPER
 HUNTS HI-LITER 245G
 LOGAN'S CHEERLEADER 280G
 R P BUSHWACKER 3 944
 SEDGWICKS BLACKCAP 4361

	CED	BW	WW	YW	MA	CEM	SC	ST	DOC	CW	REA	YG	MARB	SMTI
EPDs	7	1.2	56	103	21	5	0.7	-	-	27	0.11	.19	0.16	51
	P	33	20	12	11	P	P	-	-	19	17	17	17	

- P.E. 11.01.12 to 3.01.13 to LVLS 3202U
- This 75% Lim-Flex heifer is homozygous polled, homozygous black and one top replacement heifer
- She is sired by the once national top selling bull CFLX Wild Card and is from a daughter of JCL Lodestar 27L, PBRS Timeless 247T
- She scanned a 4.61 for IMF and posts a 1.2 for birth, 103 for yearling weight



Morris

LVLS 3202U, service sire to Lot 14

14 ENGD MISS OBJECTIVE 705Y

Lim-Flex (25) Cow Homo Polled Homo Black ENGD 705Y 03.17.11 LFF 1994174

SS TRAVELER 6807 T510
S S OBJECTIVE T510 0T26
 S S MISS RITA R011 7R8
 EXLR NEW GENERATION 071M
LOGAN'S 903R
 EXAR BLACKBIRD 8364

D H D TRAVELER 6807
 SS MISS HI SPADE A114
 S S RITO RITO R76 R011
 S S MISS ULTRESS U56
 AUTO BLACK DAKOTA 129J
 EXLR LUVLY 084F
 EXAR TRAVELER 5240
 R R ENVIOUS BLACKBIRD9512

	CED	BW	WW	YW	MA	CEM	SC	ST	DOC	CW	REA	YG	MARB	SMTI
EPDs	13	-1.2	58	111	28	5	0.1	-	-	18	-0.67	0.63	0.51	61
	P	P	P	P	P	P	P	-	-	P	P	P	P	

- P.E. 11.01.12 to 3.01.13 to LVLS 3202U
- Homozygous polled, homozygous black and one big numbered 25% Lim-Flex
- She has a .51 for marbling, 61 for MTI, 111 for yearling weight, 58 for weaning and -1.2 for birth
- She is sired by the leading Angus sire SS Objective T510 and from Logan's 903R
- The genetic package and the EPD profile of this female are like no other in this sale



Betty Fama

15 RVF IT TAKES TWO 555Y

PB Limousin (100) Cow Double Polled Double Black JJKH 555Y 09.17.11 NPF 1998198

GPFF BLAQUE RULON
DHVO DEUCE 132R
 AMY JO DHAN 20L
 MASTER BWSG DEFENSE 145D
JJKH LILLIAN 143L
 JJKH FANCY FREE 645F

BLACK DIAMOND
 QUAIL RUN RAMONA BP
 BLACK CAT DHAN 152G
 GPFF AMBER JO
 LKCC TOMAHAWKS TOUCHDOWN
 MISS BWSG SWEET 16 179 W
 SCF POLLED ATHOS 318A
 JJKH PURE HOPE 231D

	CED	BW	WW	YW	MA	CEM	SC	ST	DOC	CW	REA	YG	MARB	SMTI
EPDs	5	2.4	53	88	21	0	0.8	-	16	-	-	-	-	0
	P	30	20	15	17	P	P	-	P	-	-	-	-	

- A.I. 11.22.12 to Connealy Consensus 7229
- There are nothing more popular in our breed than females sired by DHVO Deuce
- This young double polled heifer will calve after the sale to the big numbered Angus sire Connealy Consensus 7229
- She is very eye appealing, strong in her stance and has the powerful look to her
- Her resulting calf will be a 50% Lim-Flex and will blend the best of Limousin with the best of Angus

16

ELCX SAINT 147Y

Lim-Flex (75) Cow Homo Polled Homo Black ELCX 147Y 03.17.11 LFF 1989600

GPF BLAQUE RULON
DHVO DEUCE 132R
 AMY JO DHAN 20L

WULFS NOBEL PRIZE 3861N
GPFX BLAQUE DESTINY
 C A SHENANDOAH 409

BLACK DIAMOND
 QUAIL RUN RAMONA BP
 BLACK CAT DHAN 152G
 GPF AMBER JO
 COLE WULF HUNT
 WULF'S CASUAL 3161C
 B/R NEW DESIGN 323
 T B R BANDO LADY Y167

	CED	BW	WW	YW	MA	CEM	SC	ST	DOC	CW	REA	YG	MARB	SMTI
EPDs	8	-0.8	51	89	25	1	0.6	-	-	55	0.54	0.06	0.20	52
	P	35	25	20	17	P	P	-	-	23	22	22	22	

- P.E. 11.01.12 to 3.01.13 to LVLS 3202U
- Homozygous black and homozygous polled
- Sired by DHVO Deuce and from the leading Milam/Jepson/Heartfelt donor, GPFX Blaue Destiny
- She offers a balance set of EPD's with a very eye appealing conformation
- This 75% Lim-Flex heifer offers a low birth of -0.8, 25 for milk and .54 for REA
- She sells bred to the 50% Lim-Flex son of Bon View New Design 1407



Morris



GPFX Blaue Destiny, dam of Lot 16 & 17.

17

SBLX YOUR LUCKY

Lim-Flex (75) Cow Double Polled Homo Black SBLX 129Y 09.21.11 LFF 2005137

GPF BLAQUE RULON
DHVO DEUCE 132R
 AMY JO DHAN 20L

WULFS NOBEL PRIZE 3861N
GPFX BLAQUE DESTINY
 C A SHENANDOAH 409

BLACK DIAMOND
 QUAIL RUN RAMONA BP
 BLACK CAT DHAN 152G
 GPF AMBER JO
 COLE WULF HUNT
 WULF'S CASUAL 3161C
 B/R NEW DESIGN 323
 T B R BANDO LADY Y167

	CED	BW	WW	YW	MA	CEM	SC	ST	DOC	CW	REA	YG	MARB	SMTI
EPDs	8	0.1	55	94	25	1	0.6	-	-	50	0.46	0.12	0.18	52
	P	35	30	21	17	P	P	-	-	P	P	P	P	

- P.E. 11.01.12 to 3.01.13 to LVLS 3202U
- Polled and homozygous black
- Here is a full sister in blood to ELCX 147Y
- Sired by DHVO Deuce and from the elite donor GPFX Blaue Destiny, the leading donor for Heartfelt/Milam/Jepson
- She represents a proven and prominent pedigree with a solid set of EPD's



Morris

18

NHCA YESTERDAY 312Y

Lim-Flex (38) Cow Double Polled Double Black NHCA 312Y 03.06.11 LFF 1988427

G A R GRID MAKER
S A V BISMARCK 5682
 S A V ABIGALE 0451

LVLS SECRET WEAPON 4408K
LVLS9794N
 LVLS 794B

GDAR TRAVELER 044
 G A R PRECISION 2536
 SCHOENES FIX IT 826
 S A V ABIGALE 6062
 LVLS FARMER 4G
 LVLS 408H
 YKCC IRONSIDE BULL 155NS

	CED	BW	WW	YW	MA	CEM	SC	ST	DOC	CW	REA	YG	MARB	SMTI
EPDs	12	-1.3	53	100	33	6	0.3	-	7	37	-0.22	0.38	0.23	51
	P	33	30	22	21	P	P	-	P	20	19	19	19	

- P.E. 11.01.12 to 3.01.13 to LVLS 3202U
- This 37.5% Lim-Flex female is sired by the bib numbered Angus sire SAV Bismarck and from a daughter of LVLS Secret Weapon
- She posts a -1.3 for birth, 100 for yearling weight, 33 for milk and .23 for marbling
- She is very feminine and angular up through her front end and very well balanced



Morris



Morris

EXLR Sugar 154R,
dam of Lot 19.



Morris

SSTO Sadie 6854S,
dam of Lot 20.



19 ELCX DIANAS WILLOW 131Y

% Limousin (78) Cow Homo Polled Homo Black ELCX 131Y 01.25.11 NXF 198991

GPFF BLAQUE RULON
DHVO DEUCE 132R
AMY JO DHAN 20L

EXLR RIGHT ON TIME 106J
EXLR SUGAR 154R
EXLR SUGAR N012

BLACK DIAMOND
QUAIL RUN RAMONA BP
BLACK CAT DHAN 152G
GPFF AMBER JO
WULF'S COUNT DOWN 9251C
EXLR 516G
H B A R NEW DESIGN 035
EXLR SUGAR 7302L

	CED	BW	WW	YW	MA	CEM	SC	ST	DOC	CW	REA	YG	MARB	SMTI
EPDs	6	1.2	57	94	27	1	1.0	-	-	53	0.51	0.14	0.03	47
	P	P	P	P	P	P	P	-	-	P	P	P	P	P

- P.E. 11.01.12 to 3.01.13 to LVLS 3202U
- Homozygous polled, homozygous black and a daughter of the once national champion bull DHVO Deuce
- She is from the \$20,000 valued donor at Edwards Land & Cattle Co.. She is a big numbered daughter of EXLR Right On Time 106J that continues to impress us with her excellent progeny
- She offers a 94 for yearling weight, 27 for milk and .51 for REA

20 CJLM SADIE 6854Y

Lim-Flex (75) Cow Homo Polled Homo Black CJLM 6854Y 03.17.11 LFF 1988400

GPFF BLAQUE RULON
DHVO DEUCE 132R
AMY JO DHAN 20L

JCL LODESTAR 27L
SSTO SADIE 6854S
THOMAS LUCY ROSE 9509

BLACK DIAMOND
QUAIL RUN RAMONA BP
BLACK CAT DHAN 152G
GPFF AMBER JO
HUNTS HI-LITER 245G
LOGAN'S CHEERLEADER 280G
SITZ TRAVELER 8180
THOMAS LUCY ROSE 4067

	CED	BW	WW	YW	MA	CEM	SC	ST	DOC	CW	REA	YG	MARB	SMTI
EPDs	10	0.5	59	107	27	4	0.9	-	-	58	0.28	0.33	0.13	50
	P	P	P	P	P	P	P	-	-	P	P	P	P	P

- P.E. 11.01.12 to 3.01.13 to LVLS 3202U
- Homozygous polled and homozygous black
- Sired by DHVO Deuce and back to the leading 50% Lim-Flex donor SSTO Sadie 6854S, a daughter of JCL Lodestar 27L
- She offers a low birth of 0.5 for birth, 107 for yearling, 27 for milk and .13 for marbling
- Sadie is very easy on the eye and has the striking profile, balance and complete pattern that we know you will appreciate when you see her on sale day

21 CFLX ETERNITY 101Y

Lim-Flex (75) Cow Homo Polled Homo Black CFLX 101Y 01.28.11 LFF 1989807

EF MAIN STAY 541M
EF SMACK DOWN 764S
M L PRUDENCE 427

AUTO BLACK DAKOTA 129J
JCL BLACK ETERNITY 55N
JCL ETERNITY

AUTO BLACK DAKOTA 129J
EXLR 231J
V A R GATEWAY 4101
M L PRUDENCE 9014
EXLR DAKOTA 353G
DFLC JET SET BPC 34Y
JCL BLACK OUT
ROKR DIAMONDS ARE FOREVER

	CED	BW	WW	YW	MA	CEM	SC	ST	DOC	CW	REA	YG	MARB	SMTI
EPDs	3	2.4	50	93	28	2	0.1	-	13	6	-0.09	0.13	0.02	45
	19	33	22	13	13	19	P	-	P	P	P	P	P	P

- Bred 11.01.12 to Sennett Wonderful 857U
- Homozygous polled and homozygous black
- Sired by EF Smack Down 764S, the once reserve national champion Lim-Flex bull and herd sire for Council Family Limousin
- She goes back to a daughter of AUTO Black Dakota 129J and back to JCL Black Out
- This heifer posts a 93 for yearling weight and 28 for milk



Morris

LOT 22 - EXLR Bardoiler 8005Y

22 EXLR BARDOLIER 8005Y

Lim-Flex (34) Cow Homo Polled Double Black EXLR 8005Y 04.01.11 LFF 1993231

BR MIDLAND
EXAR TITLELIST T011
 EXG BLACKCAP R054 R3
 CARROUSELS PURE POWER
EXLR BARDOLIER 744T
 EXLR BARDOLIER N060

TWIN VALLEY PRECISIONE161
 BR ROYAL LASS 7036-19
 EXAR SUDDEN IMPACT 1537
 EXG BLACKCAP N145 R3
 GPFF BLAQUE RULON
 TUBB FIRST CLASS 666F
 H B A R NEW DESIGN 035
 EXLR BARDOLIER 7211L

	CED	BW	WW	YW	MA	CEM	SC	ST	DOC	CW	REA	YG	MARB	SMTI
EPDs	8	0.6	52	96	25	1	-	-	3	63	-0.06	0.56	0.53	60
P	35	24	20	17	P	-	-	P	P	P	P	P		

- PE. 11.22.12 to 3.01.13 to LVLS Yukon 798Y
- This double black and homozygous polled daughter of EXAR Titlelist T011 is strong numbered and very appealing in her profile
- She posts a 0.6 for birth, 96 for yearling weight, 25 for milk and .53 for marbling
- Her combination of strength of numbers with her prominent pedigree makes for a nice addition to anyone's herd

23 PBRS 189Y

Lim-Flex (75) Cow Homo Polled Homo Black PBRS 189Y 08.29.11 LFF 2015058

AUTO DOLLAR GENERAL 122R
PBRS TAKE THIS 744T
 MAGS NAPELLA
 MAGS SASQUATCH
PBRS 409W
 BT ROSE 497N

LVLS SECRET WEAPON 4408K
 AUTO KYRIA 232K
 ANDERS JAG
 AUTO CITY NIGHTS 214H
 EXLR NEW GENERATION 071M
 MAGS FRUITFUL 487M
 BT TRAVELER 132K
 COCHANGUS ROSE J3

	CED	BW	WW	YW	MA	CEM	SC	ST	DOC	CW	REA	YG	MARB	SMTI
EPDs	12	-0.5	37	78	29	7	0.2	-	15	18	-0.11	0.31	0.23	47
	15	32	19	14	10	14	P	-	P	P	P	P	P	

- P.E. 11.01.12 to 3.01.13 to LVLS 3202U
- This homozygous polled and homozygous black granddaughter of AUTO Dollar General 122R is from a daughter of MAGS Sasquatch
- She posts a low birth of -0.5, milk of 29 and marbling of .23
- This heifer sells bred to the Bon View New Design 1407 son and senior herd sire, LVLS 3202U

24 CJLM AUBURN 806X

Lim-Flex (75) Cow Double Polled Homo Black CJLM 806X 03.23.10 LFF 1959584

AUTO DOLLAR GENERAL 122R
BOHI TITLELIST 7050T
 CARROUSELS PINA COLADA
 G A R INTEGRITY
BOHI SAMIA 6220S
 ANLC0745K

LVLS SECRET WEAPON 4408K
 AUTO KYRIA 232K
 AUTO BLACK DAKOTA 129J
 ELMW GINNIE P58G
 BON VIEW NEW DESIGN 1407
 G A R PRECISION 1019
 COLE FIRST DOWN 46D
 LAURA'S OPIUM

	CED	BW	WW	YW	MA	CEM	SC	ST	DOC	CW	REA	YG	MARB	SMTI
EPDs	7	1.3	47	93	29	7	0.4	-	11	13	-0.05	0.24	0.27	52
	14	32	18	12	10	13	P	-	P	P	P	P	P	

- P.E. 11.15.12 to 3.15.13 to MAGS Unparalleled
- Double polled and homozygous black
- Sired by the AUTO Dollar General 122R son from Carrouseles Pina Colada, BOHI Titlelist 7050T
- This 75% Lim-Flex heifer has a low birth of 1.3, 93 for yearling, 29 for milk and .27 for marbling
- She is from the daughter of GAR Integrity back to the COLE First Down daughter and big league donor for Edwards Land & Cattle Co.

MAGS Teddie DAUGHTERS



MAGS Teddie, sire of Lots 25 - 29.

MAGS Teddie was a top herd sire at Massey Limousin for short time until he was then purchased by Twin Willow Farms and now is a leading sire at Edwards Land & Cattle Co., Beulaville, NC. He is a son of GAR Predestined and out of the \$50,000 valued donor EXLR 199H that is a leading donor at Magness Land & Cattle Co. MAGS Teddie is full sib to MAGS Unheard Of, MAGS Undoing and a maternal sibling to EXLR Excellante 251L. The strength in genetics, power in performance and EPD profile of this entire family is like no other. The following MAGS Teddie daughters are highlights of the sale and represent the strength of the Massey Limousin program. They are big numbered, well made and come from the strength of the foundation at Massey Limousin.

25 CJLM CLASSY 398Y

Lim-Flex (69) Cow Double Polled Double Black CJLM 398Y 04.17.11 LFF 1985848

G A R PREDESTINED
MAGS TEDDIE
EXLR 199H

MNWS FRONTIER 507R
CJLM CLASSIC COOKIE 398T
SLVL DREAM COOKIE 138D

B/R NEW DESIGN 036
G A R EXT 4206
WULFS FANFARE 4055F
EXLR 558F
GPFF BLAQUE RULON
WELZ MACY 203M
WULFS QUARTERBACK 4222B
EAFM COOKIE

	CED	BW	WW	YW	MA	CEM	SC	ST	DOC	CW	REA	YG	MARB	SMTI
EPDs	9	-0.1	39	76	34	3	0.3	-	14	7	0.22	0.03	0.16	47
	14	31	18	12	11	13	P	-	P	P	P	P	P	P

• P.E. 11.22.12 to 3.01.13 to LVLS 3202U

26 CJLM SAMIA 6220Y

Lim-Flex (44) Cow Double Polled Double Black CJLM 6220Y 06.13.11 LFF 2010326

G A R PREDESTINED
MAGS TEDDIE
EXLR 199H

G A R INTEGRITY
BOHI SAMIA 6220S
ANLC0745K

B/R NEW DESIGN 036
G A R EXT 4206
WULFS FANFARE 4055F
EXLR 558F
BON VIEW NEW DESIGN 1407
G A R PRECISION 1019
COLE FIRST DOWN 46D
LAURA'S OPIUM

	CED	BW	WW	YW	MA	CEM	SC	ST	DOC	CW	REA	YG	MARB	SMTI
EPDs	8	-0.1	44	88	30	4	0.5	-	13	18	-0.23	0.34	0.50	59
	P	27	17	13	11	P	P	-	P	P	P	P	P	P

• P.E. 11.22.12 to 3.01.13 to LVLS 3202U

28 CJLM AUTUMN LADY 835X

Lim-Flex (69) Cow Double Polled Black CJLM 835XX 04.23.10 LFF 2010192

G A R PREDESTINED
MAGS TEDDIE
EXLR 199H

LOGAN'S JUDGE 922J
CMMS AUTUMN LADY 442P
STKO CHATEAU 7154G

B/R NEW DESIGN 036
G A R EXT 4206
WULFS FANFARE 4055F
EXLR 558F
COLE FIRST DOWN 46D
LOGAN'S GEM
WULFS EXPLOSION 0184E
MISS WOLFETTE 9054X

	CED	BW	WW	YW	MA	CEM	SC	ST	DOC	CW	REA	YG	MARB	SMTI
EPDs	9	-0.4	38	79	27	4	0.4	-	16	-	-	-	-	0
	14	33	19	11	10	13	P	-	P	-	-	-	-	-

• P.E. 11.15.12 to 3.15.13 to MAGS Unparalleled

27 CJLM STARLIGHT 868X

Lim-Flex (56) Cow Double Polled Double Black CJLM 868X 05.17.10 LFF 2010191

G A R PREDESTINED
MAGS TEDDIE
EXLR 199H

MINE PLD MALACHI 2950M
MINE PLD STAR BRIGHT 516S
MINE PLD MELODY 2492M

B/R NEW DESIGN 036
G A R EXT 4206
WULFS FANFARE 4055F
EXLR 558F
AUTO BLACK DAKOTA 129J
JCL MADELINE
MINE POLLED DRYDOCK 004H

	CED	BW	WW	YW	MA	CEM	SC	ST	DOC	CW	REA	YG	MARB	SMTI
EPDs	7	-0.2	42	84	28	3	0.4	-	-	9	0.06	0.09	0.19	49
	P	32	18	12	10	P	P	-	-	P	P	P	P	P

• P.E. 11.15.12 to 3.15.13 to MAGS Unparalleled

29 EXLR SCOTCH CAP 7257T

Lim-Flex (75) Cow Double Polled Double Black EXLR 7257T 09.22.07 LFF 1883791

AUTO AMERICAN IDOL 162L
AUTO COUNT AMERICAN 354P
AUTO BARBARA ANN 277H

RADS BLACK PRODIGY
EXLR SCOTCH CAP 1005N
EXAR SCOTCH CAP 1548

AUTO ROUGH IDLE 141J
WULFS DELIGHT 4114D
WULF'S COUNT DOWN 9251C
AMBL LUVLY 340Y
COLE FIRST DOWN 46D
RADS POLL BLACK POWDER I
BON VIEW NEW DESIGN 1407
EXAR SCOTCH CAP 9427

	CED	BW	WW	YW	MA	CEM	SC	ST	DOC	CW	REA	YG	MARB	SMTI
EPDs	5	1.1	36	76	34	2	0.1	-	-	-4	-0.18	0.19	0.17	46
	17	35	28	16	13	16	13	-	-	P	P	P	P	P

• P.E. 11.15.12 to 3.15.13 to MAGS Unparalleled

- Double polled and double black
- This granddaughter of AUTO American Idol is from a daughter of RADS Black Prodigy
- She offers a low birth of 1.1 and a breed leading milk number of 34

30

LVLS 1851U

Lim-Flex (43) Cow Double Polled Double Black LVLS 1851U 01.25.08 LFF 1901868

S A F FOCUS OF E R
MYTTY IN FOCUS
 MYTTY COUNTESS 906

S A F FAME
 G D A R FOREVER LADY 246
 SITZ ALLIANCE 6595
 BALDRIDGE COUNTESS 357
 LVLS FARMER 4G
 LVLS 408H
 MAYS BLACK JET
 LJ MISS 868C

LVLS SECRET WEAPON 4408K
LVLS1851P
 LVLS 1855E

	CED	BW	WW	YW	MA	CEM	SC	ST	DOC	CW	REA	YG	MARB	SMTI
EPDs	13	-3.3	45	90	35	8	0.7	-	22	24	-0.32	0.44	0.38	54
	27	38	29	19	22	25	P	-	P	P	P	P	P	P

- P.E. 11.15.12 to 3.15.13 to MAGS Unparalleled
- This 43% Lim-Flex brood cow has everything positive all stacked in her favor
- She is a daughter of MYTTY In Focus back to a daughter of LVLS Secret Weapon
- She offers a breed leading set of EPD's with a -3.3 for birth, 90 for yearling weight, 35 for milk and .38 for marbling
- She sells carrying the service to the 75% Lim-Flex son of GPFF Blaue Rulon from the famed Magness and Milam donor MAGS Rockress



Fall Bred Heifers ... LOTS 2 - 38

31

CJLM MYSTIC 235Y

PB Limousin (94) Cow Polled Double Black CJLM 235Y 03.31.11 NPF 2031591

WULFS FANFARE 4055F
WULFS NASA 1212N
 MISS WULFETTE 1212L

TOMAHAWKS BLACK FRONTIER
 WULFS DELTA DAWN 4055D
 WULF'S EXTRA BONUS 0043 E
 MISS WULFETTE 9160J
 LESF ASPHALT 9N
 EXLR REBECA 1019P
 WRC PUNCH
 STBR WENDY'S KIMMIE 194A

AUTO BLAQUE LABEL 176S
AUTO MYSTIC 235W
 STBR DEMETRIA 669D

	CED	BW	WW	YW	MA	CEM	SC	ST	DOC	CW	REA	YG	MARB	SMTI
EPDs	10	1.7	44	86	27	8	0.8	-	18	17	0.21	0.02	0.11	47
	P	P+	P	P	P	P	P	-	P	P	P	P	P	P

- P.E. 11.22.12 to 3.01.13 to LVLS 3202U
- This purebred heifer is a daughter of Wulf's Nasa, one of the breed's top outcross and calving ease sires
- She is from a daughter of AUTO Blaue Label 176S back the to famed Pinegar Fullblood donor, STBR Demetria 669D
- She offers a low birth of 1.7, milk of 27 and marbling of .11 and sells bred to the Bon View New Design 1407 son, LVLS 3202U

32

DPBN VICTORIA 14 Y

Lim-Flex (75) Cow Double Polled Double Black DPBN 14Y 10.28.11 LFF 2000845

BR MIDLAND
MAGS SCOTLAND
 MAGS MARQUEE

TWIN VALLEY PRECISIONE161
 BR ROYAL LASS 7036-19
 EXLR DAKOTA 353G
 MAGS JEWEL
 COLE WULF HUNT
 LVLS8862M
 WULFS DAWSON 4421D
 GPFF BLACK VANITY

LVLS TOP CRITERIA 8862P
DFLC HBPB 14S
 DFCL BPC 15L

	CED	BW	WW	YW	MA	CEM	SC	ST	DOC	CW	REA	YG	MARB	SMTI
EPDs	5	2.3	49	88	21	1	0.2	-	10	21	0.15	0.28	0.28	52
	18	33	22	16	13	18	P	-	P	P	P	P	P	P

- P.E. 11.22.12 to 3.01.13 to LVLS 3202U
- Sired by MAGS Scotland, the once breed top seller and National Champion Lim-Flex sire
- She is from a daughter of LVLS Top Criteria 8862P back to Wulf's Dawson
- She is very desirable in her conformation and solid in her stance



LVLS 3202U, sire of Lot 33.

33

CJLM SCOTCH CAP 766X

Lim-Flex (63) Cow Double Polled Double Black 766X 398Y 01.02.10 LFF 2024812

BON VIEW NEW DESIGN 1407
LVLS 3202U
 LVLS 9202S

B/R NEW DESIGN 036
 BON VIEW PRIDE 664
 LVLS FARMER JOHN 7428P
 LVLS9202N

AUTO COUNT AMERICAN 354P
EXLR SCOTCH CAP 7257T
 EXLR SCOTCH CAP 1005N

AUTO AMERICAN IDOL 162L
 AUTO BARBARA ANN 277H
 RADS BLACK PRODIGY
 EXAR SCOTCH CAP 1548

	CED	BW	WW	YW	MA	CEM	SC	ST	DOC	CW	REA	YG	MARB	SMTI
EPDs	7	-0.5	46	90	35	3	0.4	-	-	22	-0.18	0.32	0.34	54
	P	P+	P	P	P	P	P	-	-	P	P	P	P	P

- P.E. 2.01.13 to 5.15.13 to RVDR Winner 934W
- Here is one of the really strong numbered Lim-Flex females in the sale
- She posts a low birth of -0.5, yearling weight of 90, milk of 35 and marbling of .34
- She goes to AUTO American Idol and RADS Black Prodigy on the dam side of her pedigree
- She sells bred to the red and homozygous polled son of EXLR Review and valued \$20,000 sire for Milam and Massey, RVDR Winner 934W

34 ELCX PUREIFIED 374Y

Lim-Flex (50) Cow Homo Polled Double Black ELCX 374Y 04.08.11 LFF 1978473

EF SMACK DOWN 764S
GPFX SWOOSH
 VVLC BLACK ERICA 408R

SENNETT LODESTAR 502R
ELCX WILLOW 374W
 AA 6374 HELEN 582 004

EF MAIN STAY 541M
 M L PRUDENCE 427
 AUTO BLACK DAKOTA 129J
 WHITESTONE ERICA G125
 JCL LODESTAR 27L
 DVFC COOKIES CHOICE 215H
 S A V 8180 TRAVELER 004
 FAIRCREST 582 HELEN EXT99

	CED	BW	WW	YW	MA	CEM	SC	ST	DOC	CW	REA	YG	MARB	SMTI
EPDs	6	1.1	45	89	28	4	-	-	-	-	-	-	-	0
	12	28	13	7	6	11	-	-	-	-	-	-	-	-

- P.E. 11.22.12 to 3.01.13 to LVLS 3202U
- Double black and homozygous polled
- Sired by GPFX Swoosh, the son of EF Smack Down from VVLC Black Erica 408R and full sibling to the \$12,500 half interest female selling to Owen Cattle Co.
- This 50% Lim-Flex heifer goes back to a daughter of Sennett Lodestar 502R back to an Angus daughter of SAV 8180 Traveler 004

36 CJLM KOULA 822X

PB Limousin (100) Cow Double Polled Double Black CJLM 822X 04.09.10 NPF 2031592

TUBB CROWN'N 7 660L
CJLM DRAXXIN 183R
 CJLM ANGEL

EXLR GUARDIAN 394K
CJLM KOULA 170N
 CJLM TEDS SHOWGIRL

L 7'N SEVEN
 TUBB FASHION GAL 660F
 LKCC TOMAHAWKS TOUCHDOWN
 CJLM TEDS SHOWGIRL
 WULFS GUARDIAN 5074G
 EXLR 061G
 TEXS RANGER TED
 DAWALTS MISS 268Y

	CED	BW	WW	YW	MA	CEM	SC	ST	DOC	CW	REA	YG	MARB	SMTI
EPDs	7	3.5	45	81	24	5	-0.2	-	-	-	-	-	-	0
	P	P+	P	P	P	P	P	-	-	-	-	-	-	-

- P.E. 12.01.12 to 05.15.13 to BOHI Titlelist 7050T
- This purebred heifer is sired by the son of TUBB Crown'N 7 660L and goes back to a granddaughter of Wulf's Guardian
- She is from the progressive Massey program and represents strong genetics that have been tested and proven over the years
- She sells bred to the big numbered son of Bon View New Design 1407, LVLS 3202U



35 MINE PLD SWEETCHEEKS 1063Y

PB Limousin (100) Cow Double Polled Double Black MINE 1063Y 09.09.11 NPF 2006908

GPF BLAQUE RULON
MINE RULONS WEAPON 8107U
 KEYI NUT-N-HONEY 213N

EXLR EXCELLANTE 251L
MINE PLD MANWATCHER 7171T
 MINE PLD HONEY SWEET 5245

BLACK DIAMOND
 QUAIL RUN RAMONA BP
 LVLS SECRET WEAPON 4408K
 LVLS 3885G
 EXLR POLLED RESOLVE 175G
 EXLR 199H
 JCL LODESTAR 27L
 MINE FRANCES 3280N

	CED	BW	WW	YW	MA	CEM	SC	ST	DOC	CW	REA	YG	MARB	SMTI
EPDs	14	-0.3	51	85	29	5	0.8	-	-	24	0.34	-0.04	0.00	45
	13	33	27	14	12	12	10	-	-	18	16	16	16	16

- P.E. 11.22.12 to 3.01.13 to LVLS 3202U
- This purebred female is bred to do a great job in production. She is sired by a son of GPF Blaue Rulon from a daughter of LVLS Secret Weapon
- She is from a daughter of EXLR Excellante 251L back to JCL Lodestar 27L
- This female has a lineage of some of the very best in the business and she has a solid set of EPD's as well. She offers a low birth of -0.3, 29 for milk and .34 for ribeye

37 CJLM KATHY 865X

Lim-Flex (75) Cow Double Polled Double Black CJLM 865X 05.13.10 LFF 2032019

AUTO DOLLAR GENERAL 122R
BOHI TITLELIST 7050T
 CARROUSELS PINA COLADA

BON VIEW NEW DESIGN 878
MAGS ROAD HOME
 VORD LUSCIOUS 101L

LVLS SECRET WEAPON 4408K
 AUTO KYRIA 232K
 AUTO BLACK DAKOTA 129J
 ELMW GINNIE P58G
 B/R NEW DESIGN 036
 BON VIEW GAMMER 85
 LVLS FARMER 4G
 VORD JASMINE

	CED	BW	WW	YW	MA	CEM	SC	ST	DOC	CW	REA	YG	MARB	SMTI
EPDs	9	1.6	44	89	32	7	0.2	-	14	7	-0.10	0.21	0.22	50
	P	P+	P	P	P	P	P	-	P	P	P	P	P	P

- P.E. 3.01.13 to 5.01.13 to RVDR Winner 934W
- This 75% Lim-Flex brood cow is sired by BOHI Titlelist 7050T and from a daughter of Bon View New Design 878
- She posts a 1.6 for birthweight, 32 for milk and .22 for marbling
- Here mating to the \$20,000 valued red and homozygous polled son of EXLR Review, RVDR Winner will create very positive results for the new owner

38 CJLM 29Y

PB Limousin (100) Cow Double Polled Homo Black CJLM 29Y 04.17.11 Pending

EXLR NATIVE 7133N
DVFC SITTING BULL
 DVFC MONICA 136H

DVFC ARROWHEAD 1004J
DVFC SWEET DEAL 1128L
 FTL 221D

EXLR JUDO 459J
 TRAK EXLR ANNIE
 CHAZ FIRST CHOICE 6004F
 JDPM MISS GENERAL 170B
 WULFS GUARDIAN 5074G
 SLVL SABLE COOKIE 381E
 WBR BARCELONA 155B

	CED	BW	WW	YW	MA	CEM	SC	ST	DOC	CW	REA	YG	MARB	SMTI
EPDs	5	2.7	46	73	22	4	0.5	-	18	22	0.58	-0.06	-0.09	41
	-	-	-	-	-	-	-	-	-	-	-	-	-	-

- P.E. 11.22.12 to 3.01.13 to LVLS 3202U
- This purebred female is sired by the once All American Futurity Champion bull and now leading sire for P & D Ranches, DVFC Sitting Bull
- She is from the \$44,000 valued donor for Massey Limousin, DVFC Sweet Deal 1128L
- This young first calf heifer sells bred to LVLS 3202U, the son of Bon View New Design 1407. He has a low birth of -0.8, yearling weight of 108, milk of 37 and marbling of .50



Morris

LOT 39 - CJLM Nobility 848X

39 CJLM NOBILITY 848X

Lim-Flex (75) Cow Double Polled Homo Black CJLM 848X 05.04.10 LFF 2010190

BOHI TITLELIST 7050T
 AUTO DOLLAR GENERAL 122R
 CARROUSELS PINA COLADA

MAGS NOBILITY 140N
 MAGS JUMANJI
 S A QUEEN LADY 1958

LVLS SECRET WEAPON 4408K
 AUTO KYRIA 232K
 AUTO BLACK DAKOTA 129J
 ELMW GINNIE P58G
 KRMC BLACK LEGACY 917B
 MAGS BLACK & SATIN
 S A F CHOCTAW
 S A QUEEN LADY 1460

- P.E. 11.22.12 to 3.01.13 to LVLS 3202U
- Double polled and homozygous polled
- This daughter of BOHI Titlelist 7050T is from a daughter of the marbling giant MAGS Jumanji
- She offers a 93 for yearling weight, 32 for milk, .25 for marbling and 50 for MTI
- As you will see sale day she is very complete in her profile, balanced in her structure and has the pedigree and prominence needed to produce excellence for the new owner

	CED	BW	WW	YW	MA	CEM	SC	ST	DOC	CW	REA	YG	MARB	SMTI
EPDs	8	2.3	47	93	32	4	0.5	-	7	16	-0.20	0.35	0.25	50
	15	32	19	12	12	14	P	-	P	P	P	P	P	P



LOT 40 - MAGS Steffi Graff

40 MAGS STEFFI GRAFF

Lim-Flex (50) Cow Homo Polled Black MAGS 9438S 09.02.06 LFF 1873574

TWIN VALLEY PRECISIONE161
BR MIDLAND
 BR ROYAL LASS 7036-19
 WULFS JOHN HANCOCK 7048J
ANLC MAGGIE MAY 2112M
 ANLC KATIE GIRL 0716K
 GAR PRECISION 1680
 WCC BLACKCAP C9
 S A F NEUTRON
 S A F ROYAL LASS 7036
 WULFS GAGE 5158G
 MISS WULFETTE 7048G
 COLE FIRST DOWN 46D
 SOGF AMBER KRUG 264B

	CED	BW	WW	YW	MA	CEM	SC	ST	DOC	CW	REA	YG	MARB	SMTI
EPDs	7	0.8	45	86	16	0	0.3	11	14	22	-0.22	0.40	0.50	58
	P	29	27	22	27	P	P	P	P	44	41	41	40	

- P.E. 11.15.12 to 3.15.13 to MAGS Unparalleled
- Black and homozygous polled
- Here is big time donor in the making and one top marbling female
- She posts a .50 for marbling, 58 for MTI and scanned a 4.01 for IMF
- Sired by BR Midland from the consistent donor ANLC Maggie May 2112M, a proven donor and daughter of Wulf's John Hancock

41 MAGS WATER BALLET

Lim-Flex (50) Cow Homo Polled Black MAGS 9759W 09.02.09 LFF 1957633

B/R NEW DESIGN 036
G A R PREDESTINED
 G A R EXT 4206
 EXLR DAKOTA 353G
JBRH SHEZA LOOKER
 JBRH SHEZA DANDY
 V D A R NEW TREND 315
 B/R BLACKCAP EMPRESS 76
 N BAR EMULATION EXT
 G A R 6807 TRAVELER 1432
 WULF'S COUNT DOWN 9251C
 CANE RIDGE DAPHNE 011D
 WULFS GUARDIAN 5074G
 EXLR SHEZA DANDY 38D

	CED	BW	WW	YW	MA	CEM	SC	ST	DOC	CW	REA	YG	MARB	SMTI
EPDs	8	-1.7	33	69	23	3	0.1	-	8	6	0.06	0.15	0.25	48
	P	40	35	25	27	P	P	-	P	26	26	26	26	

- P.E. 11.15.12 to 3.15.13 to MAGS Unparalleled
- Black and homozygous polled
- Here is a big time donor prospect! Sired by the big league Angus sire GAR Predestined and from the Linhart/JB Ranch donor JBRH Sheza Looker
- This female is royally bred and has a great set of EPD's and scan data that you will really admire. She scanned a 4.66 for IMF and 15.22 for REA



LOT 42 - MAGS Unedited Book



LOT 43 - EBFL 212T

42 MAGS UNEDITED BOOK

Lim-Flex (75) Cow Double Polled Homo Black MAGS 1682U 01.07.08 LFF 1904205

LVLS SECRET WEAPON 4408K
AUTO DOLLAR GENERAL 122R
 AUTO KYRIA 232K

MAGS JUMANJI
MAGS 13M
 WK QUEEN LASSIE 0332

LVLS FARMER 4G
 LVLS 408H
 AUTO HACKETT 702H
 WULFS HAPPINESS 8136H
 KRMC BLACK LEGACY 917B
 MAGS BLACK & SATIN
 PROUD RULER WK 8003
 QUEEN LASSIE 716

	CED	BW	WW	YW	MA	CEM	SC	ST	DOC	CW	REA	YG	MARB	SMTI
EPDs	9	1.4	46	92	35	6	0.7	-	11	7	-0.38	0.30	0.17	48
	P	39	34	29	28	P	19	-	P	44	41	41	40	

- P.E. 11.15.12 to 3.15.13 to MAGS Unparalleled
- Polled and homozygous black
- This daughter of AUTO Dollar General 122R is from the Wies donor MAGS 13M. She is huge numbered and represents a very proven and prominent pedigree.
- She has earned a 92 for yearling weight, 35 for milk and scanned a 12.9

43 EBFL 212T

Lim-Flex (50) Cow Polled Double Black EBFL 212T 10.05.07 LFF 1927335

B/R NEW DESIGN 036
G A R PREDESTINED
 G A R EXT 4206

LOJW IRONSIDES 3P
CORL MISS IRONSIDES 21G
 OAKLEAF ANNIE 13X

V D A R NEW TREND 315
 B/R BLACKCAP EMPRESS 76
 N BAR EMULATION EXT
 G A R 6807 TRAVELER 1432
 WD SAM 801K
 MANILA 4J
 BLACK ROADRUNNER
 SFBL MISS JETSET

	CED	BW	WW	YW	MA	CEM	SC	ST	DOC	CW	REA	YG	MARB	SMTI
EPDs	10	-1.0	34	74	36	4	-0.1	-	6	3	-0.04	0.22	0.42	54
	29	34	28	25	23	27	P	-	P	P	P	P	P	

- P.E. 11.15.12 to 3.15.13 to MAGS Unparalleled
- This black and polled female is a proven and very productive donor
- She is sired by GAR Predestined and from a daughter of LOJW Ironsides 21G
- We love her rib shape, volume, capacity and overall brood cow look that she has
- She is extremely big footed, super sound structured with a low birth of -1.0, milk of 36 and marbling of .42

44 CC' S UPPER CLASS 526U

Lim-Flex (75) Cow Double Polled Doubl Black CCDL 526U 09.11.08 LFF 1927034

WULFS FANFARE 4055F TOMAHAWKS BLACK FRONTIER
CRSL 5064R WULFS DELTA DAWN 4055D
 MINE SOUTHERN DOLL 1154L EXLR POLLED BENCHMARK709G
 MINE PLD SOUTHERN BELLE H
 EXAR NEW DESIGN 3903 BON VIEW NEW DESIGN 1407
AUTO ROSE 619R RR MISS EMULOUS 6391
 AUTO ROSE 257N EAFF REJUVENATOR 260J
 AUTO ALICNA 247G

	CED	BW	WW	YW	MA	CEM	SC	ST	DOC	CW	REA	YG	MARB	SMTI
EPDs	8	1.0	40	77	29	3	0.4	-	8	6	0.01	0.10	0.18	48
	24	24	18	13	11	23	P	-	P	P	P	P	P	P

- P.E. 11.15.12 to 3.15.13 to MAGS Unparalleled
- This 75% Lim-Flex brood cow is sired by the once syndicated sire CRSL 5064R
- She is from a daughter of EXAR New Design 3903 and back to a fullblood daughter of EAFF Rejuvenator
- She is double polled, double black and never been tested
- Her future calf will be sired by the GPFf Blaque Rulon son from MAGS Rockress

46 ELCX BELLE 64W

Lim-Flex (50) Cow Double Polled Double Black ELCX 64W 11.21.09 LFF 1997314

WULFS FANFARE 4055F TOMAHAWKS BLACK FRONTIER
CRSL 5064R WULFS DELTA DAWN 4055D
 MINE SOUTHERN DOLL 1154L EXLR POLLED BENCHMARK709G
 MINE PLD SOUTHERN BELLE H
 ROSEWOOD APACHE 1084 LEACHMAN SAUGAHATCHEE3000
PCF APACHE BLUE BELLE 628 ROSEWOOD ERICA 8052
 PCF BLUE BELLE ULTRAVOX B T ULTRAVOX 297E
 G M LADY BLUE BELLE G126

	CED	BW	WW	YW	MA	CEM	SC	ST	DOC	CW	REA	YG	MARB	SMTI
EPDs	11	-1.4	42	81	32	4	-	-	-	-	-	-	-	0
	25	33	20	14	12	23	-	-	-	-	-	-	-	-

- P.E. 11.15.12 to 3.15.13 to MAGS Unparalleled
- Here is a double polled, double black daughter of CRSL 5064R that is a 50% Lim-Flex
- She offers a low birth of -1.4 and milk of 32
- She sells bred to the once MOE medal winning bull MAGS Unparalleled and son of GPFf Black Rulon

45 CJLM MISS DAISY 598W

Lim-Flex (50) Cow Double Polled Double Black CJLM 598W 04.04.09 LFF 1985606

BR MIDLAND TWIN VALLEY PRECISIONE161
MAGS SCOTLAND BR ROYAL LASS 7036-19
 MAGS MARQUEE EXLR DAKOTA 353G
 MAGS JEWEL
 EXAR NEW DESIGN 3903 BON VIEW NEW DESIGN 1407
AUTO KAY 642R RR MISS EMULOUS 6391
 AUTO K 255N SOGF SPECIAL K 247B
 AUTO BAY 251G

	CED	BW	WW	YW	MA	CEM	SC	ST	DOC	CW	REA	YG	MARB	SMTI
EPDs	6	0.9	45	87	28	0	0.3	-	6	33	-0.20	0.49	0.41	54
	18	31	19	14	13	17	P	-	P	P	P	P	P	P

- P.E. 11.01.12 to 2.01.13 to LVLS Creston
- This 50% Lim-Flex is sired by the once national champion Lim-Flex sire MAGS Scotland and is from a daughter of EXAR New Design
- She offers a breed leading set of EPDs with a 0.9 for birth, 28 for milk, .41 for marbling and 54 for MTI

47 AUTO CLAXIE 256W

PB Limousin (100) Cow Double Polled Homo Black AUTO 256W 09.03.09 NPF 1955573

BLACK DIAMOND CANE RIDGE BLACK DRAK
GPFf BLAQUE RULON WULFS DIADEM 4260D
 QUAIL RUN RAMONA BP LKCC TOMAHAWKS TOUCHDOWN
 AMBL FAVORITE GIRL 36W
 CARROUSELS NASDAQ AUTO BLACK DAKOTA 129J
MAGS SPIEGEL CARROUSELS JAMAICA
 AUTO KATIE 0846K WULFS GUARDIAN 5074G
 AUTO ELITE 270F

	CED	BW	WW	YW	MA	CEM	SC	ST	DOC	CW	REA	YG	MARB	SMTI
EPDs	6	1.5	45	81	16	0	0.6	23	12	12	0.65	-0.11	-0.13	40
	P	P	P	P	P	P	P	P	P	24	23	23	23	

- P.E. 12.01.12 to 5.15.13 to BOHI Titlelist 7050T
- Here is a solid and proven producer of GPFf Blaque Rulon that is from the once national champion bull Carrousel Nasdaq
- She posts a .65 for her ribeye number and this homozygous black female has proven her worth in production
- She sells bred to the purebred son of AUTO Dollar General 122R from Carrousel Pina Colada, BOHI Titlelist 7050T

48 ELCX STAR STRUCK 88W

Lim-Flex (50) Cow Double Polled Double Black ELCX 88W 10.28.09 LFF 1997330

JCL LODESTAR 27L HUNTS HI-LITER 245G
SENNETT LODESTAR 502R LOGAN'S CHEERLEADER 280G
 DVFC COOKIES CHOICE 215H CHAZ FIRST CHOICE 6004F
 SLVL DIVINE COOKIE 371E
 MF E82 HHF ATLAS 471 J94 HHF ATLAS 650 E82
OAK HILL H H F ATLAS RITA HHF 19 LADY 191 471
 BLUE RIDGE ALEXA SIBYL H1 RITO 503 RITA 1R3 AMBUSH
 DEEP RUN ALEXA SIBYL 410

	CED	BW	WW	YW	MA	CEM	SC	ST	DOC	CW	REA	YG	MARB	SMTI
EPDs	6	2.0	45	88	26	6	0.1	-	-	-	-	-	-	0
	24	32	23	11	11	22	5	-	-	-	-	-	-	

- P.E. 11.15.12 to 3.15.13 to MAGS Unparalleled
- This is one very maternal looking and nice made female
- Sired by Sennett Lodestar 502R and from an elite Angus female
- She sports a birth of 2.0 and milk of 26
- She has proven her worth as a top producer and solid brood cow

Thanks for attending
 the sale! From our family
 to yours, we appreciate
 your support of the
 Massey Limousin program.

49

EXLR SUNNY 8540U

% Limousin (78) Cow Double Polled Double Black EXLR 8540U 04.06.08 NXF 1911669

CARROUSELS PURE POWER
EXLR SATURN 040S
 EXLR BAMBI 787M

EXLR RIGHT ON TIME 106J
EXLR SUNNY 711N
 EXLR 5127F

GPF BLAQUE RULON
 TUBB FIRST CLASS 666F
 EXLR RIGHT ON TIME 106J
 EXLR BAMBI 001K
 WULF'S COUNT DOWN 9251C
 EXLR 516G
 LKCC EXPRESSWAY 193C
 B7 OF SUNNYSLOPE PDC 7B

	CED	BW	WW	YW	MA	CEM	SC	ST	DOC	CW	REA	YG	MARB	SMTI
EPDs	5	2.5	33	59	21	2	0.6	-	-	14	0.24	0.15	0.09	42
	28	38	28	17	16	25	14	-	-	P	P	P	P	

- Due sale time to EBFL Ypsilanti 420Y
- This double polled, double black female is sired by EXLR Saturn and from a daughter of EXAR Right on Time 106J
- This double polled, double black brood cow was a successful show female as a yearling and she is now earning her keep as a solid brood cow
- She sells bred to the \$100,000 valued sire EBFL Ypsilanti 420Y

50

CHR TRISHA 111T

Lim-Flex (50) Cow Homo Polled Homo Black KQ 111T 05.08.07 LFF 1882259

AUTO BLACK DAKOTA 129J
EXLR NEO 614N
 GREENWAY MISSEMULOUS 717

GPF BLAQUE RULON
CHR NEPAL 404N
 KQ 8142H

EXLR DAKOTA 353G
 DFLC JET SET BPC 34Y
 PINE DRIVE BIG SKY
 GREENWAY MISS EMULOUS7138
 BLACK DIAMOND
 QUAIL RUN RAMONA BP
 S A F FAME

	CED	BW	WW	YW	MA	CEM	SC	ST	DOC	CW	REA	YG	MARB	SMTI
EPDs	6	1.5	45	80	23	2	0.3	18	9	13	-0.12	0.24	0.08	44
	23	33	21	15	20	22	P	P	P	38	35	35	34	

- P.E. 12.01.12 to 5.15.13 to BOHI Titlelist 7050T
- Homozygous polled and homozygous black
- This female is bred to do well in production. She has lined up in her pedigree GPF Blaque Rulon and AUTO Black Dakota 129J
- She sells due to calve this fall for a 75% Lim-Flex calf sired by the AUTO Dollar General 122R son, BOHI Titlelist 7050T

52

EXLR BLACKCAP 185R

Lim-Flex (37) Cow Double Polled Double Black EXLR 185R 04.11.05 LFF 1797146

BR MIDLAND
EXAR MIDLAND 3913
 BASIN TROJAN ERICA 853K

EXLR RIGHT ON TIME 106J
EXLR BLACKCAP N035
 EXLR BLACKCAP 7294L

TWIN VALLEY PRECISIONE161
 BR ROYAL LASS 7036-19
 ROCKN D AMBUSH 1531
 BASIN TROJAN ERICA 3388
 WULF'S COUNT DOWN 9251C
 EXLR 516G
 EXLR RESOLUTION 129J
 EXLR 565H

	CED	BW	WW	YW	MA	CEM	SC	ST	DOC	CW	REA	YG	MARB	SMTI
EPDs	9	1.2	46	86	28	0	0.5	13	7	29	-0.34	0.47	0.37	53
	28	37	29	15	22	27	6	7	P	22	21	21	21	

- P.E. 12.01.12 to 5.15.13 to BOHI Titlelist 7050T
- This double polled, double black female has definitely earned her weight at Massey Limousin
- She has a pedigree that is stacked strong with big numbers and proven families
- 185R is sired by EXAR Midland 3913 and from a daughter of EXLR Right On Time 106J
- We admire her milk of 28, marbling of .37 and scan data of 12.3 for REA and 3.83 for IMF



Fall Bred Cows ... LOTS 39 - 67

51

HC DYNASTY 707

Lim-Flex (50) Cow Polled Homo Black HACO 707T 01.23.07 LFF 1867883

GAR PRECISION 1680
COLEMAN PRECISION 499
 KMK DONNA J311

COLE WULF HUNT
HC DYNASTY 303
 HC DYNASTY 119

TEHAMA BANDO 155
 9J9 GAR 856
 D H D TRAVELER 6807
 BROOKS DONNA 319
 COLE FIRST DOWN 46D
 COLE CATALINA 3309C
 HC OVERTIME 756
 HACO MISTY MORNING

	CED	BW	WW	YW	MA	CEM	SC	ST	DOC	CW	REA	YG	MARB	SMTI
EPDs	11	-0.2	44	88	27	3	0.2	-	26	29	0.14	0.19	0.30	53
	16	33	25	14	15	15	P	-	15	19	18	18	18	

- P.E. 12.01.12 to 5.15.13 to BOHI Titlelist 7050T
- Polled and homozygous black
- This is a very well bred and big numbered 50% Lim-Flex daughter of Coleman Precision 499
- She is from a daughter of COLE Wulf Hunt that goes back to a daughter of HC Overtime 756
- She posts a low birth of -2.0, milk of 27 and marbling of .30
- She also posts scan data of 14.4 for REA and 3.55 for IMF

53

CMIL LUCKY 646S

PB Limousin (100) Cow Horned Red CMIL 6464X 09.08.06 NPF 1881026

MASTER BRUN YANKEE 225X
TUBB GRINDER 749D
 MONDEAUX MISS 749T

POLLED PACK LEADER 1182U
CANE RIDGE POLL LUCY 377B
 NMCC 2218 P

MASTER BRUN ROCKY 812V
 LADY BRUN 811V
 ROONEYS KRUGERRAND 8R
 ROONEYS FANTASIA 91R
 YKCC ATLANTIC 397N
 MISS WOLFETTE 1150N
 DEUX AMIS KIDDER
 NMCC MISS MAGIC 88K

	CED	BW	WW	YW	MA	CEM	SC	ST	DOC	CW	REA	YG	MARB	SMTI
EPDs	13	2.0	35	66	17	14	-0.2	19	4	-14	0.02	-0.09	-0.01	41
	31	39	30	23	32	29	20	P	P	43	40	40	39	

- P.E. 11.15.12 to 3.15.13 to MAGS Unparalleled
- This red purebred brood cow represents a pedigree that has been tried and proven for several years. She is sired by the big middled, thick made sire TUBB Grinder and from a daughter of Polled Pack Leader
- She is big boned, soft in pasterns and very maternal in her appearance



54 AUTO KUTIE 602R

Lim-Flex (50) Cow Double Polled Black AUTO 602R 09.11.05 LFF 1821533

BON VIEW NEW DESIGN 1407 B/R NEW DESIGN 036
EXAR NEW DESIGN 3903 BON VIEW PRIDE 664
 RR MISS EMULOUS 6391 GAR PRECISION 1680
 RR MISS EMULOUS 4328
 WULFS GUARDIAN 5074G WULFS RAMBLER 8400X
AUTO KUTIE 839K WULFS EXAMPLE 5074E
 AUTO HANDY 228H SLVL BLACK OXEN 190D
 STBR DEMETRIA 669D

	CED	BW	WW	YW	MA	CEM	SC	ST	DOC	CW	REA	YG	MARB	SMTI
EPDs	10	-1.0	43	88	26	3	0.1	-	11	39	0.00	0.40	0.24	48
	30	36	27	22	16	28	P	-	P	22	21	21	21	

- P.E. 12.01.12 to 5.15.13 to BOHI Titlelist 7050T
- This is one top female that has been a solid producer at Massey Limousin
- She is sired by EXAR New Design 3903 and from a daughter of Wulf's Guardian
- This brood cow is moderate in her frame, has plenty of muscle and is very docile
- She has earned a -1.0 for birth, 26 for milk, .24 for marbling and scanned a 3.33 for IMF

55 EXLR SUNNYSLOPE 302R

PB Limousin (87) Cow Double Polled Double Black EXLR 302R 09.26.05 NPF 1824150

EXLR DAKOTA 353G WULF'S COUNT DOWN 9251C
AUTO BLACK DAKOTA 129J CANE RIDGE DAPHNE 011D
 DFLC JET SET BPC 34Y GENERAL LEE LOJW 40S
 DFLC BPC 20U
 LKCC EXPRESSWAY 193C LKCC BLACK LOTO 1079W
EXLR 5128G LKCC SMITH CATTLE 532P
 B1 OF SUNNYSLOPE PDC B1 GOLDENVUE UPLANDS

	CED	BW	WW	YW	MA	CEM	SC	ST	DOC	CW	REA	YG	MARB	SMTI
EPDs	8	-0.9	38	67	20	4	0.4	16	-	18	0.49	-0.06	-0.01	41
	28	41	32	26	30	25	17	P	-	41	37	37	37	

- P.E. 12.01.12 to 5.15.13 to BOHI Titlelist 7050T
- This polled and black female is sired by the two time national gold medal sire AUTO Black Dakota 129J and from a daughter of EXLR Expressway 193C
- This purebred brood cow posts a low birth of -0.9, ribeye of .49 and scanned a REA of 12.6 and 3.58 for IMF
- We love how she has kept her condition and how well she has maintained herself in and during production



56 PBR'S WINDS OF CHANGE 1969

Lim-Flex (50) Cow Homo Polled Double Black PBR'S 1969W 10.09.09 LFF 1955298

JCL LODESTAR 27L HUNTS HI-LITER 245G
PBR'S BIG LODE 507R LOGAN'S CHEERLEADER 280G
 EXLR JULIE 617L EXLR POLLED BENCHMARK709G
 EXLR 620G
 B T ULTRAVOX 297E OSU 6T6 ULTRA
BT BLACKBIRD 575M FINKS VIXON 788
 O C C BLACKBIRD 999F O C C BONANZA 880B
 O C C BLACKBIRD 914C

	CED	BW	WW	YW	MA	CEM	SC	ST	DOC	CW	REA	YG	MARB	SMTI
EPDs	14	-0.7	48	93	26	4	0.3	-	-	44	-0.17	0.47	0.39	55
	24	34	26	13	14	22	5	-	-	P	P	P	P	

- P.E. 11.22.12 to 1.15.13 to LVLS Creston
- Double black and homozygous polled
- This big numbered granddaughter of the multiple trait leading sire JCL Lodestar is one of the top brood cows in the sale
- She offers a -0.7 for birth, 93 for yearling weight, 26 for milk and .39 for marbling
- This 50% Lim-Flex is super deep ribbed, sound in her structure and one of the powerful and proven cows in the sale offering

57 GPFX EMMA JEAN

Lim-Flex (50) Cow Homo Polled Double Black GPFX 10U 04.15.08 LFF 1938412

BLACK DIAMOND CANE RIDGE BLACK DRAK
GPFX BLAQUE RULON WULFS DIADEM 4260D
 QUAIL RUN RAMONA BP LKCC TOMAHAWKS TOUCHDOWN
 AMBL FAVORITE GIRL 36W
 B/R NEW DESIGN 323 B/R NEW DESIGN 036
C A SHENANDOAH 409 B/R RUBY OF TIFFANY 155
 T B R BANDO LADY Y167 TEHAMA BANDO 155

	CED	BW	WW	YW	MA	CEM	SC	ST	DOC	CW	REA	YG	MARB	SMTI
EPDs	8	-1.7	38	79	23	-1	0.3	-	-	17	-0.06	0.28	0.28	49
	27	32	27	24	20	26	15	-	-	P	P	P	P	

- P.E. 11.15.12 to 3.15.13 to MAGS Unparalleled
- Double black and homozygous polled
- This 50% Lim-Flex female represents a cross that has worked real well in the business.....Rulon bred to an Angus
- This brood cow is like you would imagine, she is big boned, big footed and very eye appealing

58

PBRs 409W

Lim-Flex (50) Cow Homo Polled Homo Black PBRs 409W 04.07.09 LFF 1944335

MAGS SASQUATCH
 EXLR NEW GENERATION 071M AUTO BLACK DAKOTA 129J
 EXLR LUVLY 084F
 MAGS FRUITFUL 487M EXLR LIMITED EDITION 765J
 WULFS FRUITFUL 6052F

BT TRAVELER 132K
 SITZ TRAVELER 043
BT ROSE 497N
 BT EVERELDA ENTENSE 57D
 COCHANGUS ROSE J3 COCHANGUS TRAVELER 382
 COCHANGUS ROSE 8127

	CED	BW	WW	YW	MA	CEM	SC	ST	DOC	CW	REA	YG	MARB	SMTI
EPDs	9	0.2	35	72	28	3	0.0	-	12	12	-0.50	0.53	0.29	47
	28	37	30	24	19	25	7	-	P	22	21	21	21	

- P.E. 11.22.12 to 1.15.13 to LVLS Creston
- Homozygous polled and homozygous black
- This 50% Lim-Flex female is one proven producer for Massey Limousin
- She posts a 28 for milk, .29 for marbling and scanned a 4.98 for IMF
- Her future calf will be homozygous polled and homozygous black

60

MAGS PHILANA

Lim-Flex (50) Cow Polled Black MAGS 624P 04.22.04 LFF 1769861

SIR WMS DESIGN 5762
 GENETICS BY DESIGN 049 B/R NEW DESIGN 036
 G G CLARA 859
 STEVENSON ZARA 4576 WESTWIND RITO 8503 DJH019
 STEVENSON ZARA 930D

MAGS COURTNEY 524M
 WULFS DAWSON 4421D LKCC TOMAHAWKS TOUCHDOWN
 MISS WOLFETTE 4221S
 CANE RIDGE COURTNEY 016D OTSK HARD CASH 0500Y
 YKCC MISS IRONSIDE 197NS

	CED	BW	WW	YW	MA	CEM	SC	ST	DOC	CW	REA	YG	MARB	SMTI
EPDs	6	-0.1	39	79	39/=	-1	0.2	14	7	13	-0.47	0.58	0.35	50
	28	34	26	21	18	26	P	P	P	39	36	36	35	

- P.E. 11.15.12 to 3.15.13 to MAGS Unparalleled
- Polled, black and one of the top marbling brood cows that has done a top for Massey Limousin over the years
- She is a daughter of Genetics By Design 049 and from a daughter of Wulf's Dawson
- She has earned a -0.1 for birth with a breed leading 39 for milk and scanned a 5.7 for marbling

62

BNLM DEMI 17M

PB Limousin (100) Cow Polled Double Black BNLM 17M 09.05.02 NPF 1697069

ANDERS JAG
 GREENWOODPOLLED455ROCKETPOLLED CHIEF CADA
 DIAMONDS ARE FOREVER
 ANDERS GEMINI MASTER BRUN MOZART 274D
 ANDERS BLACK EPIC

MISS FLML 17B
 CANE RIDGE SPECTRUM 406W CRAFTSMAN 9021S
 TEXS STAR DREAM GIRL
 MISS RANGER 81U MR BOURBON 16R
 MISS PURE FANFARON 52J

	CED	BW	WW	YW	MA	CEM	SC	ST	DOC	CW	REA	YG	MARB	SMTI
EPDs	6	3.5	42	69	13	0	0.2	16	-7	-	-	-	-	0
	30	38	28	23	21	27	15	P	27	-	-	-	-	

- P.E. 11.15.12 to 3.15.13 to MAGS Unparalleled
- Sired by the once highly sought after Anders Jag and from a granddaughter of Craftsman is this broody female
- She sells carrying the service to the 75% Lim-Flex son of GPFf Blaque Rulon from the \$20,000 valued donor for Magness and Milam, MAGS Rockress

59

MAGS 26M

Lim-Flex (50) Cow Double Polled Double Black MAGS 26M 03.10.02 LFF 1707927

EXLR COUNT DOWN 624K
 WULF'S COUNT DOWN 9251C LKCC TOMAHAWKS TOUCHDOWN
 MISS WOLFETTE 9051X
 CANE RIDGE DAPHNE 011D WULFS RAMBLER 8400X
 YKCC MISS IRONSIDE 110NS

WAR EXT 4018 2007
 N BAR EMULATION EXT
TS QUEEN 9519
 WAR NORTHLAND 2007 0127
 TS CAPACINNO 5119
 WK QUEEN 5379

	CED	BW	WW	YW	MA	CEM	SC	ST	DOC	CW	REA	YG	MARB	SMTI
EPDs	4	1.7	50	80	32	2	0.6	15	-	45	-0.27	0.46	0.30	52
	22	38	29	22	28	20	8	8	-	38	35	35	34	

- P.E. 11.15.12 to 3.15.13 to BOHI Titlelist 7050T
- This polled and double black brood cow has earned her keep at Massey Limousin
- She is sired by the Wulf's Countdown son, EXLR Count Down 624K
- She has earned a 1.7 for birth, 32 for milk, .30 for marbling and she scanned a 4.65 for IMF

61

GVMS AMY

PB Limousin (100) Cow Double Polled Double Black GVMS 102L 09.01.01 NPF 1658784

SLVL FORTUNE COOKIE 6187F
 SLVL BLACK OXEN 190D BLACK OX JR 9119N
 MS LADY WLR
 PLLP POLLED WEBSTER 30X
 EAFM COOKIE
 LKCC TOMAHAWKS TOUCHDOWN

GVMS JEANNE
 GVMS BLACK TIE BRJL KLASSY KENTUCKY BABE
 GRANDVIEW JEAN AMLC KY RAMBLER
 LBCH 39W

	CED	BW	WW	YW	MA	CEM	SC	ST	DOC	CW	REA	YG	MARB	SMTI
EPDs	10	1.3	38	68	19	8	0.4	11	-	-	-	-	-	0
	30	37	28	22	24	28	15	16	-	-	-	-	-	

- P.E. 11.15.12 to 3.15.13 to MAGS Unparalleled
- This double polled, double black daughter of SLVL Fortune Cookie 6187F is a solid producing female
- She has proven her worth for Massey and we think you will appreciate her on for her fleshing ability and what she has done

63

MINE BREE 2432M

PB Limousin (100) Cow Horned Red MINE 2432M 09.12.02 NPF 1714539

WULF'S CHALLENGER 6044Y
 ROUGHLEY ULTRABRIGHT
 MISS WOLFETTE 6044U
 CIRCLE MAXIMILLIAN
 HARVEST ORCHID
 BLACK OX JR 9119N
 MISS WOLFETTE 4146S
 YKCC ATLANTIC 397N

MISS WOLFETTE 9054X
 POLLED PACK LEADER 1182U
 MISS WOLFETTE 4059S
 MISS WOLFETTE 1150N
 GKF CANADIAN PACIFIC GKF3
 MISS WOLFETTE 8113K

	CED	BW	WW	YW	MA	CEM	SC	ST	DOC	CW	REA	YG	MARB	SMTI
EPDs	3	4.1	40	69	24	0	0.4	14	6	-3	0.36	-0.25	-0.11	40
	31	32	29	27	27	29	P	22	P	P	P	P	P	

- P.E. 11.15.12 to 3.15.13 to MAGS Unparalleled
- This red purebred female is sired by Wulf's Challenger and goes back to Polled Pack Leader back to Canadian Pacific on the bottoms side of her pedigree
- She sells bred to the once MOE medal winning bull, MAGS Unparalleled

64 HAWS NIBBLES 725N

% Limousin (100) Cow Horned Red HAWS 725N 02.14.03 NPF 2024057

WULFS RAMBLER 8400X
WULFS GUARDIAN 5074G
 WULFS EXAMPLE 5074E

EXLR POLLED RESOLVE 175G
HAWS LETS DANCE 680L
 MAGS JUST FOR TODAY

POLLED PACK LEADER 1182U
 TRI PURECHO 100K
 WULF'S CHOPPER 1014C
 MISS WOLFETTE 2151B
 KRMC BLACK LEGACY 917B
 LKCC SMITH CATTLE 110C
 WULFS QUARTERBACK 4222B
 ROKR DOMINIQUE

	CED	BW	WW	YW	MA	CEM	SC	ST	DOC	CW	REA	YG	MARB	SMTI
EPDs	6	1.1	43	80	21	-1	0.1	20	24	9	0.69	-0.16	-0.16	38
	27	35	27	23	20	24	19	P	P	P	P	P	P	P

- P.E. 11.15.12 to 3.15.13 to CJLM Draxxin183R (Blk/Dble pld purebred son of TUBB Crown'n 7 660L)
- This black purebred female is a daughter of Wulf's Guardian that goes back to EXLR Polled Resolve back to Wulf's Quarterback
- She has raised quality calves and this calve that will be to you shortly after the sale will be sired by the young Massey sire CJLM Draxxin

66 BNLM FLM BLACK ROSE 338N

PB Limousin (100) Cow Horned Black BNLM 338N 06.09.03 NPF 1722005

LVLS COWBOY 015F
BNLM LARIAT 0090K
 SFKL POLLED DOIN FINE

WULFS QUARTERBACK 4222B
MBJR ROSE 338H
 RDJM MISS EMILY 01A

JCL BLACK OUT
 LVLS REBECA
 CANE RIDGE HARDBALL 845C
 SFKL ROSIE 417D
 LKCC TOMAHAWKS TOUCHDOWN
 MISS WOLFETTE 4221S
 SY HEAVY HITTER 313W
 DBRO FINE N DANDY 416 W

	CED	BW	WW	YW	MA	CEM	SC	ST	DOC	CW	REA	YG	MARB	SMTI
EPDs	4	2.8	37	70	20	2	0.3	-	21	-	-	-	-	0
	22	21	14	10	11	20	P	-	P	-	-	-	-	-

- P.E. 11.15.12 to 3.15.13 to CJLM 183R (Blk/Dble pld purebred son of TUBB Crown'n 7 660L)
- This black purebred female has been an easy breeder, top brood cow and performance oriented cow for Massey Limousin
- She offers a strong lineage of cattle with JCL Black Out, Wulf's Quarterback and SY Heavy Hitter all in one package

65 MISS 3N

% Limousin (100) Cow Double Polled Double Black WKRB 3N 10.13.03 NPF 1853600

WULFS QUARTERBACK 4222B
EXTR U DA MAN 233G
 HC EXTRAORDINARY HCR 61X

MAGS JUMANJI
JAPA MISS 150L
 DVFC MISS SABLE 395H

LKCC TOMAHAWKS TOUCHDOWN
 MISS WOLFETTE 4221S
 BVFL BLACK POLL POWER
 HC GUSSET HCR 18G
 KRMC BLACK LEGACY 917B
 MAGS BLACK & SATIN
 WULFS FLARE 9681F
 SLVL SABLE COOKIE 381E

	CED	BW	WW	YW	MA	CEM	SC	ST	DOC	CW	REA	YG	MARB	SMTI
EPDs	5	3.4	44	79	22	-2	0.3	14	14	51	0.51	-0.06	0.06	46
	24	25	21	15	16	23	P	P	P	P	P	P	P	P

- P.E. 11.15.12 to 3.15.13 to MAGS Unparalleled
- Double polled and double black
- This female has some of the breed's most prominent in her pedigree with Wulf's Quarterback, HC Xtraordinary 61X, MAGS Jumanji and SLVL Sable Cookie
- She will calve around sale time to the GPFF Blaque Rulon son, MAGS Unparalleled

67 TUBB JUDO 535R

PB Limousin (100) Cow Horned Red TUBB 535R 08.29.05 NPF 1833734

WULFS GUARDIAN 5074G
EXLR JUDO 459J
 CM POLLED KATIE

AUTO THUNDER RODE 735K
TUBB THUNDER 394N
 CHR JEENA LEE

WULFS RAMBLER 8400X
 WULFS EXAMPLE 5074E
 WULFS DAWSON 4421D
 MISS WOLFETTE 4163D
 AUTO BLACK THUNDER 318E
 AUTO LADY OXEN 271G
 TUBB GRINDER 749D
 CHR BLACK GINA 151G

	CED	BW	WW	YW	MA	CEM	SC	ST	DOC	CW	REA	YG	MARB	SMTI
EPDs	9	1.6	45	77	16	3	-0.1	15	-	12	0.39	-0.06	-0.16	38
	27	36	30	25	22	25	11	11	-	P	P	P	P	P

- P.E. 11.15.12 to 3.15.13 to MAGS Unparalleled
- This red purebred daughter of EXLR Judo has been a mainstay and one of the really top brood cows in the sale
- She sells bred to MAGS Unparalleled, the GPFF Blaque Rulon from the \$20,000 valued donor MAGS Rockress



68 CJLM MADELINE 7171Z

PB Limousin (100) Cow Double Polled Double Black CJLM 7171Z 09.23.12 NPF 2031595

GPFF BLAQUE RULON
DHVO DEUCE 132R
 AMY JO DHAN 20L

EXLR EXCELLANTE 251L
MINE PLD MANWATCHER 7171T
 MINE PLD HONEY SWEET 5245

BLACK DIAMOND
 QUAIL RUN RAMONA BP
 BLACK CAT DHAN 152G
 GPFF AMBER JO
 EXLR POLLED RESOLVE 175G
 EXLR 199H
 JCL LODESTAR 27L
 MINE FRANCES 3280N

	CED	BW	WW	YW	MA	CEM	SC	ST	DOC	CW	REA	YG	MARB	SMTI
EPDs	7	2.1	61	102	28	2	1.2	-	22	51	0.57	-0.01	-0.01	48
	P	P+	P	P	P	P	P	-	P	P	P	P	P	P

- This is a very exciting show heifer prospect. She is sired by the two time national champion sire DHVO Deuce and is from a daughter of EXLR Excellante 251L
- She posts a 61 for weaning weight, 102 for yearling weight and .57 for ribeye
- She is double polled, double black and is feminine up through her front end, strong down her topline and very sound structured

69**ATML 131Z**

% Limousin (77) Cow Double Polled Double Black ATML 131ZZ 10.01.12 NPF 2024057

GPF BLAQUE RULON
MAGS UNPARALLELED
 MAGS ROCKCRESS

EXLR SATURN 040S
EXLR SUNNY 8540U
 EXLR SUNNY 711N

BLACK DIAMOND
 QUAIL RUN RAMONA BP
 EXAR NEW DESIGN 2997
 MAGS LARK
 CARROUSELS PURE POWER
 EXLR BAMBI 787M
 EXLR RIGHT ON TIME 106J
 EXLR 5127F

	CED	BW	WW	YW	MA	CEM	SC	ST	DOC	CW	REA	YG	MARB	SMTI
EPDs	5	1.7	41	76	23	0	0.7	-	-	15	0.18	0.17	0.15	46
	P	P	P	P	P	P	P	-	-	P	P	P	P	P

- This 76.5% Limousin open heifer sired by the once MOE medal sire MAGS Unparalleled and from the EXLR Saturn daughter that is also highlighted in this sale
- She is double polled, double black, sound in her structure and very fluid in her movement
- No matter how this female stops she always seem to have the prominent pose and desirable profile



Open Heifers ... LOTS 68 - 73

70 CJLM MISS BALANCER 0212Z

Lim-Flex (47) Cow Double Polled Double Black CJLM 0212Z 09.21.12 LFF 2031593

BASIN FRANCHISE P142
TMCK BALANCER 173U
 EXLR DUCHESS 528P

G A R PREDESTINED
EBFL 212T
 CORL MISS IRONSIDES 21G

C A FUTURE DIRECTION 5321
 BASIN CHLOE 812L
 EXLR NEW GENERATION 071M
 EXLR 199H
 B/R NEW DESIGN 036
 G A R EXT 4206
 LOJW IRONSIDES 3P
 OAKLEAF ANNIE 13X

	CED	BW	WW	YW	MA	CEM	SC	ST	DOC	CW	REA	YG	MARB	SMTI
EPDs	9	-1.0	47	96	37	3	0.1	-	-	9	-0.27	0.32	0.47	59
	P	P	P	P	P	P	P	-	-	P	P	P	P	P

- Here is a straight line double polled, double black daughter of TMCK Balancer
- She is from an elite donor EBFL 212T (selling as lot 43), a proven daughter of GAR Predestined from Ironsides
- This heifer is great numbered with a -1.0 for birth, 96 for yearling weight, 37 for milk and .47 for marbling

**71 CJLM MISS 409Z**

Lim-Flex (75) Cow Double Polled Homo Black CJLM 409Z 10.05.12 LFF 2024802

AUTO DOLLAR GENERAL 122R
BOHI TITELIST 7050T
 CARROUSELS PINA COLADA

MAGS SASQUATCH
PBR 409W
 BT ROSE 497N

LVLS SECRET WEAPON 4408K
 AUTO KYRIA 232K
 AUTO BLACK DAKOTA 129J
 ELMW GINNIE P58G
 EXLR NEW GENERATION 071M
 MAGS FRUITFUL 487M
 BT TRAVELER 132K
 COCHANGUS ROSE J3

	CED	BW	WW	YW	MA	CEM	SC	ST	DOC	CW	REA	YG	MARB	SMTI
EPDs	8	1.5	44	88	31	6	0.2	-	11	8	-0.16	0.31	0.16	47
	P	P+	P	P	P	P	P	-	P	P	P	P	P	P

- Double polled and homozygous black
- This 75% Lim-Flex daughter of BOHI Titlelist 7050T that goes back to a daughter of MAGS Sasquatch
- She offers a low birth of 1.5 and milk of 31
- We love the feminine front end and the striking profile that she has at this stage in her life





72 CJLM BLACKBIRD 1969Z

Lim-Flex (75) Cow Double Polled Double Black CJLM 1969Z 11.01.12 LFF 2024797

AUTO DOLLAR GENERAL 122R LVL SECRET WEAPON 4408K
BOHI TITLELIST 7050T AUTO KYRIA 232K
 CARROUSELS PINA COLADA AUTO BLACK DAKOTA 129J
 ELMW GINNIE P58G
 JCL LODESTAR 27L
 EXLR JULIE 617L
 B T ULTRAVOX 297E
 O C C BLACKBIRD 999F

	CED	BW	WW	YW	MA	CEM	SC	ST	DOC	CW	REA	YG	MARB	SMTI
EPDs	11	0.6	51	99	30	7	0.3	-	-	24	0.01	0.29	0.21	51
	P	P	P	P	P	P	P	-	-	P	P	P	P	

- Here is a really nice made, well patterned daughter of BOHI Titlelist 7050T that is from a daughter of PBRS Big Lode 507R
- She has a great set of EPD's with a highlighted 99 for yearling weight, 30 for milk and marbling of .21
- This young heifer is square and level out of her rump and very strong down her topline. She also stands upright and is very appealing in her prof



73 CJLM EXCEL 8040Z

PB Limousin (100) Cow Double Polled Double Black CJLM 8040Z 10.25.12 NPF 2024729

JCL LODESTAR 27L HUNTS HI-LITER 245G
MINE SOUTHERN LODE 8130U LOGAN'S CHEERLEADER 280G
 MINE RHONDA 5111R CARROUSELS NASDAQ
 MINE PLD SHALIMAR 9020J
 EXLR EXCELLANTE 251L EXLR POLLED RESOLVE 175G
MINE PLD EXCEL 8040U EXLR 199H
 MINE PLD HONEY SWEET 5245 JCL LODESTAR 27L
 MINE FRANCES 3280N

	CED	BW	WW	YW	MA	CEM	SC	ST	DOC	CW	REA	YG	MARB	SMTI
EPDs	9	2.4	55	101	28	7	1.0	-	-	39	0.29	0.08	0.11	50
	P	P+	P	P	P	P	P	-	-	P	P	P	P	

- Here is a purebred granddaughter of JCL Lodestar 27L and is from a daughter of EXLR Excellante 251L. She is not only well made she is also very strong in her EPD profile
- She offers a 101 for yearling weight, 28 for milk, .29 for ribeye and .11 for marbling





ARWL PLD Cashabanka 7131T,
dam of Lot 74A & 74B embryos

74a FIVE EMBRYOS

50% Lim- Flex • Red • Polled

LUCHT GRAND CANYON S41
TPIE RED CANYON LC 9347
TPIE GOLD RIB 2091

WULFS NOBEL PRIZE 3861N
ARWL PLD CASHABANKA 7131T
MINE PLD DOLLEY 3205N

LCHMN GRANDCANYON 1244G
CTDB HOBO'S GAL 803
PIE DIVISION 7104
TPIE GOLD RIB 837
COLE WOLF HUNT
WULF'S CASUAL 3161C
AUTO BLACK DAKOTA 129J
FTL ALISON 262E

	CED	BW	WW	YW	MA	CEM	SC	ST	DOC	CW	REA	YG	MARB	SMTI
EPDs	4	1.9	50	79	20	5	0.0	13	11	22	0.24	0.04	0.33	23

- Red and double polled are these future calves from the leading Massey Limousin red purebred donor, ARWL Pld Cashabanka 7131T. She is a daughter of Wulf's Nobel Prize from a daughter of the two time MOE gold medal sire, AUTO Black Dakota 129J
- These future calves are sired by the leading Minerich Red Angus sire "Red Canyon". His first calves have topped the market place over the last two years and rightfully so. They are so much the right kind and very maternal and broody in their appearance and we are certain they will be all that and much more from this purebred Limousin donor

74b FIVE EMBRYOS

50% Lim- Flex • Red • Polled

LJC LANCER 806
BROWN COMMITMENT S7206
BROWN MS SHAZZAM P7940

WULFS NOBEL PRIZE 3861N
ARWL PLD CASHABANKA 7131T
MINE PLD DOLLEY 3205N

BECKTON LANCER T A664
LJC HB LIZZIE 606
BROWN SHAZZAM M6270
BROWN MS MARIAS L7740
COLE WOLF HUNT
WULF'S CASUAL 3161C
AUTO BLACK DAKOTA 129J
FTL ALISON 262E

	CED	BW	WW	YW	MA	CEM	SC	ST	DOC	CW	REA	YG	MARB	SMTI
EPDs	9	-1.0	47	87	22	3	-0.05	9	11	22	0.40	0.32	0.54	61

- Here are some great future calves from an amazing Red Angus sire Brown Commitment S7206. He is a son of LJC Lancer 806, one of the biggest marbling number Red Angus bulls with a 1.53 for IMF. He also has a yearling weight of 92 and milk of 24.
- These future calves are from the elite Massey purebred donor and daughter of Wulf's Noble Prize and we think these calves will really big a huge hit
- The EPD's and the performance of these future calves are some of the finest in the business.

75 SEVEN EMBRYOS

75% Lim- Flex • Double Polled • Homozygous Black

AUTO DOLLAR GENERAL 122R
BOHI TITLELIST 7050T
CARROUSELS PINA COLADA

BR MIDLAND
MAGS SHUTTER BUG
MAGS LADY ACE

LVLS SECRET WEAPON 4408K
AUTO KYRIA 232K
AUTO BLACK DAKOTA 129J
ELMW GINNIE P58G
TWIN VALLEY PRECISIONE161
BR ROYAL LASS 7036-19
EXLR INTRIGUE 361G
CHAZ MISS GRETA 7003G

	CED	BW	WW	YW	MA	CEM	SC	ST	DOC	CW	REA	YG	MARB	SMTI
EPDs	7	1.4	50	99	31	6	0.6	7	10	22	0.06	0.30	0.29	53

- These future double polled, homozygous black calves are sired by the leading Massey sire, BOHI Titlelist 7050T. He is a son of AUTO Dollar General 122R and from the once national champion Carrouseles Pina Colada
- These calves are from the leading \$15,000 valued donor that is owned with Massey and good friends Nicholas and Dexter Edwards of Edwards Land & Cattle Co., Beulaville, NC. She is a donor that represents the best in pedigree and performance. She is a daughter of BR Midland from the famed MAGS Lady Ace donor. She posts a 27 for milk, .55 for marbling and 60 for MTI. She also scanned a 12.9 for REA and 4.54 for IMF



BOHI Titlelist 7050T,
sire to Lot 75 embryos



MAGS Shutter Bug,
dam of Lot 75.



*MAGS Xylopolist,
sire of Lot 76
embryos.*



*AUTO Lily 221U, dam of
Lot 76 embryos.*



*CALO Brickyard 902W,
sire of Lot 77 embryos.*



*AUTO Mistee 229U,
dam of Lot 77 embryos.*



AUTO 640S, dam of Lot 78 embryos.

76 FIVE EMBRYOS

84% Limousin • Homozygous Black • Homozygous Polled

DHVO DEUCE 132R
MAGS XYLOPOLIST
MAGS STRAWBERRY

EXLR EXCELLANTE 251L
AUTO LILY 221U
EXLR REBECA 1019P

GPFF BLAQUE RULON
AMY JO DHAN 20L
EXLR NEW GENERATION 071M
MAGS FRUITFUL 487M
EXLR POLLED RESOLVE 175G
EXLR 199H
BR MIDLAND
EXLR REBECA 614H

	CED	BW	WW	YW	MA	CEM	SC	ST	DOC	CW	REA	YG	MARB	SMTI
EPDs	10	1.7	54	101	27	2	0.9	-	20	40	0.23	0.15	0.11	49

- These future double homozygous calves are going to really be something special. They are sired by the MAGS Xylopolist 1834X, a son of Deuce from the famed MAGS Strawberry donor cow. Their dam is the \$15,000 valued Massey donor owned with friends Billy and Holly Stewart of Salt Creek Cattle & Genetics, Amber, OK. She is a daughter of EXLR Excellante 251L from the \$50,000 valued and now deceased premier donor EXLR Rebeca 1019P.
- Buy with confidence because these calves have a tremendous future and the market is wide open once they hit the ground

77 EIGHT EMBRYOS

59% Lim-Flex • Homozygous Polled • Homozygous Black

SCHILLING'S TALLADEGA
CALO BRICKYARD 902W
EXG E839 1407 M175 LS

EXLR EXCELLANTE 251L
AUTO MISTEE 229U
EXLR REBECA 1019P

KRVN NASKAR 013N
RCSX RAINY DAY 80R
BON VIEW NEW DESIGN 1407
PAF 4019 6807 E839
EXLR POLLED RESOLVE 175G
EXLR 199H
BR MIDLAND
EXLR REBECA 614H

	CED	BW	WW	YW	MA	CEM	SC	ST	DOC	CW	REA	YG	MARB	SMTI
EPDs	10	0.7	45	92	26	2	0.7	-	13	20	-0.23	0.31	0.30	52

- Homozygous polled and homozygous black
- These future calves are sired by the 2011 National Champion Lim-Flex sire CALO Brickyard and from the elite Massey Limousin donor, AUTO Mistee 229U. She is a full sister in blood to AUTO 221U, a daughter of EXLR Excellante 251L from the famed \$50,000 valued donor EXLR Rebeca 1019P
- These future calves have the promotion paid and will be hit the minute they hit the ground

78 EIGHT EMBRYOS

37.5% Lim-Flex • Homozygous Polled • Homozygous Black

S A V BISMARCK 5682
S A V BULLION 0474
S A V EMBLYNETTE 7566

AUTO BLACK CROSS 133P
AUTO MISS MISSOURI 640S
KRVN NABBED 320N

G A R GRID MAKER
S A V ABIGALE 0451
S A V NET WORTH 4200
S A V EMBLYNETTE 7261
AUTO THE BACHELOR 158L
EXLR LUVLY 087F
GPFF BLAQUE RULON

	CED	BW	WW	YW	MA	CEM	SC	ST	DOC	CW	REA	YG	MARB	SMTI
EPDs	6	2.4	51	93	26	7	0.77	-	1	32	0.78	-0.06	0.18	22





LVLS 3202U

LVLS 3202U

Lim-Flex (50) Bull	Homo Polled	Homo Black	LVLS 3202U	01.04.08	LFM 1901892
	B/R NEW DESIGN 036		V D A R NEW TREND 315		
BON VIEW	NEW DESIGN 1407		B/R BLACKCAP EMPRESS 76		
	BON VIEW PRIDE 664		GAR SLEEP EASY 1009		
			BON VIEW PRIDE 1551		
LVLS 9202S	LVLS FARMER JOHN 7428P		LVLS FARMER JACK 5842M		
			LVLS7428L		
	LVLS9202N		LVLS POLLED BLACK JACK		
			LVLS GABRIELLA 3615G		

	CED	BW	WW	YW	MA	CEM	SC	ST	DOC	CW	REA	YG	MARB	SMTI
EPDs	10	-0.8	57	104	37	5	0.7	-	10	49	-0.18	0.44	0.50	62
	29	49	33	19	19	25	10	-	P	22	22	22	21	



BOHI Titlelist 7050T

BOHI TITLELIST 7050T

PB Limousin (100) Bull	Double Polled	Homo Black	BOHI 7050T	03.08.07	NPM 1905458
	LVLS SECRET WEAPON 4408K		LVLS FARMER 4G		
AUTO DOLLAR	GENERAL 122R		LVLS 408H		
	AUTO KYRIA 232K		AUTO HACKETT 702H		
			WULFS HAPPINESS 8136H		
	AUTO BLACK DAKOTA 129J		EXLR DAKOTA 353G		
CARROUSELS	PINA COLADA		DFLC JET SET BPC 34Y		
	ELMW GINNIE P58G		TCDT MR T.D'S POWER PACK		
			ELMW POLLED ECSTASY 67E		

	CED	BW	WW	YW	MA	CEM	SC	ST	DOC	CW	REA	YG	MARB	SMTI
EPDs	7	2.4	53	104	34	9	0.3	-	10	4	0.19	0.08	0.02	46
	34	70	46	28	21	30	19	-	26	46	42	42	42	



LVLS In Focus 489Z

LVLS IN FOCUS 489Z

Angus Bull	Polled	Black	LVLS 489Z	01.12.12	AAA 17375168
	S A F FOCUS OF E R		S A F FAME		
MYTTY IN FOCUS	MYTTY COUNTESS 906		G D A R FOREVER LADY 246		
			SITZ ALLIANCE 6595		
	BON VIEW NEW DESIGN 1407		BALDRIDGE COUNTESS 357		
LVLS 489R			B/R NEW DESIGN 036		
	BLACKCAP V935		BON VIEW PRIDE 664		
			B T FREEWAY 91F		
			BLACKCAP V632		

	CED	BW	WW	YW	MA	CEM	SC	ST	DOC	CW	REA	YG	MARB	SMTI
EPDs	11	-0.4	49	87	28	11	-	-	-	-	-	-	-	-
	29	36	27	22	22	19	-	-	-	-	-	-	-	-



EXLC Undercover 201Y

ELCX UNDERCOVER 201Y

Lim-Flex (50) Bull	Double Polled	Double Black	ELCX 201Y	10.1.11	LFF 2001547
	SCHILLING'S TALLADEGA		KRVN NASKAR 013N		
CALO BRICKYARD	902W		RCSX RAINY DAY 80R		
	EXG E839 1407 M175 LS		BON VIEW NEW DESIGN 1407		
			PAF 4019 6807 E839		
	G A R PREDESTINED		B/R NEW DESIGN 036		
SBLX UNDERTHECOVERS	201U		G A R EXT 4206		
	ELMW GINNIE P58G		TCDT MR T.D'S POWER PACK		
			ELMW POLLED ECSTASY 67E		

	CED	BW	WW	YW	MA	CEM	SC	ST	DOC	CW	REA	YG	MARB	SMTI
EPDs	10	-0.1	42	88	28	4	0.1	-	7	11	-0.09	0.30	0.31	51
	P	32	24	10	9	P	5	-	P	18	16	16	16	

Owned with Stewart Stables, Corbin, KY



MAGS Unparalleled

MAGS UNPARALLELED

Lim-Flex (75) Bull	Homo Polled	Homo Black	MAGS 9603U	09.05.08	LFF 1926482
	BLACK DIAMOND		CANE RIDGE BLACK DRAG		
GPFF BLAQUE RULON	QUAIL RUN RAMONA BP		WULFS DIADEM 4260D		
			LKCC TOMAHAWKS TOUCHDOWN		
	EXAR NEW DESIGN 2997		AMBL FAVORITE GIRL 36W		
MAGS ROCKCRESS	MAGS LARK		BON VIEW NEW DESIGN 1407		
			LEACHMAN EVERGREEN 8020		
			MAGS JUMANJI		
			AUTO CITY NIGHTS 214H		

	CED	BW	WW	YW	MA	CEM	SC	ST	DOC	CW	REA	YG	MARB	SMTI
EPDs	6	0.8	49	93	24	-1	0.8	22	13	15	0.12	0.17	0.20	51
	32	51	41	31	22	29	22	P	25	27	26	26	26	

LH RESOURCEFUL 324R

Lim-Flex (50) Cow Homo Polled Homo Black LVLS 324R 09.28.05 LFF 1832685

HUNTS HI-LITER 245G
JCL LODESTAR 27L
 LOGAN'S CHEERLEADER 280G
 CONNEALY DATELINE
VERMILION LASS 0035
 VERMILION LASS 8154

WADDLES COBALT 3106
 TNUH MISS C245
 COLE FIRST DOWN 46D
 TTCC CONFIDENCE MAKER
 D H D TRAVELER 6807
 EILA EILA OF CONANGA
 S A F FAME
 VERMILION LASS 5334

	CED	BW	WW	YW	MA	CEM	SC	ST	DOC	CW	REA	YG	MARB	SMTI
EPDs	15	-1.9	45	95	18	10	0.4	-	-	36	-0.55	0.54	0.31	51
	29	38	31	26	28	28	15	-	-	23	22	22	22	22



LH Resourceful 324R

TUBB DIAMOND 081K

Limousin (100) Cow Double Polled Double Black TUBB 081K 09.06.00 NPF 1606937

CANE RIDGE BLACK DRAK
BLACK DIAMOND
 WULFS DIADEM 4260D
 EXLR ROOKIE 217D
TUBB ROOKIE 744G
 MISS M T 5591T

WULFS DAWSON 4421D
 WULF'S AUTUMN ANGEL 2505B
 WULF'S CHALLENGER 6044Y
 MISS WOLFETTE 8500W
 WULFS BLACK IMAGE 0255B
 EXLR STEVIE 311B
 INSF MARKET TOPPER
 JMLC BLACK VELVET 0112M

	CED	BW	WW	YW	MA	CEM	SC	ST	DOC	CW	REA	YG	MARB	SMTI
EPDs	4	3.4	48	84	17	-3	0.4	18	10	17	0.75	-0.20	-0.12	41
	30	41	33	23	31	28	13	16	P	41	37	37	37	37



TUBB Diamond 081K

FULC SUPER FOX 314S

Lim-Flex (50) Cow Double Polled Homo Black FULC 314S 03.19.06 LFF 1871236

N BAR EMULATION EXT
LEACHMAN RIGHT TIME
 LEACHMAN ERICA 0025
 JCL BLACK OUT
LVLS 8943M
 LVLS JENI 601V

EMULATION N BAR 5522
 N BAR PRIMROSE 2424
 TEHAMA BANDO 155
 LEACHMAN ERICA 8058
 LKCC TOMAHAWKS TOUCHDOWN
 JCL MADELINE
 FMLI STRETCH'S CHALLENGER
 GBCL 1T

	CED	BW	WW	YW	MA	CEM	SC	ST	DOC	CW	REA	YG	MARB	SMTI
EPDs	8	-0.6	39	83	27	1	0.2	17	12	31	-0.45	0.54	0.32	49
	27	30	25	21	26	25	8	P	P	41	37	37	37	37



FULC Super Fox 314S

• Owned with Abele Cattle Co., El Dorado Springs, Missouri

PBRS WESTBROOK 199W

Lim-Flex (50) Cow Homo Polled Homo Black PBRS 199W 11.08.09 LFF 1955300

JCL LODESTAR 27L
PBRS BIG LODE 507R
 EXLR JULIE 617L
 GDAR SVF TRAVELER 234D
SEDGWICKS BARBARA 2867
 SEDGWICKS BARBARA 8677

HUNTS HI-LITER 245G
 LOGAN'S CHEERLEADER 280G
 EXLR POLLED BENCHMARK709G
 EXLR 620G
 TRAVELER 124 G D A R
 GDAR FOREVER LADY 718
 H A QUANTUM 4100
 SEDGWICKS BARBARA 2875

	CED	BW	WW	YW	MA	CEM	SC	ST	DOC	CW	REA	YG	MARB	SMTI
EPDs	11	-0.3	50	90	30	4	0.4	-	-	34	-0.21	0.37	0.25	51
	16	33	20	12	15	15	P	-	-	P	P	P	P	P

• Owned with Rough Creek Limousin, London, KY



PBRS Westbrook 199W

MAGS RUBICS CUBE

Lim-Flex (50) Cow Homo Polled Black MAGS 611R 09.21.05 LFF 1836553

BON VIEW NEW DESIGN 1407
EXAR NEW DESIGN 2997
 LEACHMAN EVERGREEN 8020
 DVFC COOKIE MONSTER 108H
MAGS GAMES WE PLAY 280L
 MAGS GAMES WE PLAY

B/R NEW DESIGN 036
 BON VIEW PRIDE 664
 HIGH VALLEY 5B5 OF 3D22
 LEACHMAN JC EVERGREEN 640
 CHAZ FIRST CHOICE 6004F
 SVL ANGEL COOKIE 140D
 JCL BLACK OUT
 DESERT STORM 227B

	CED	BW	WW	YW	MA	CEM	SC	ST	DOC	CW	REA	YG	MARB	SMTI
EPDs	7	-1.1	37	75	22	4	0.1	15	15	9	-0.57	0.44	0.39	52
	27	38	30	18	20	25	P	P	P	42	39	39	38	38



MAGS Rubics Cube

Massey Limousin Donors - Genetic Opportunities available from these elite donors !!

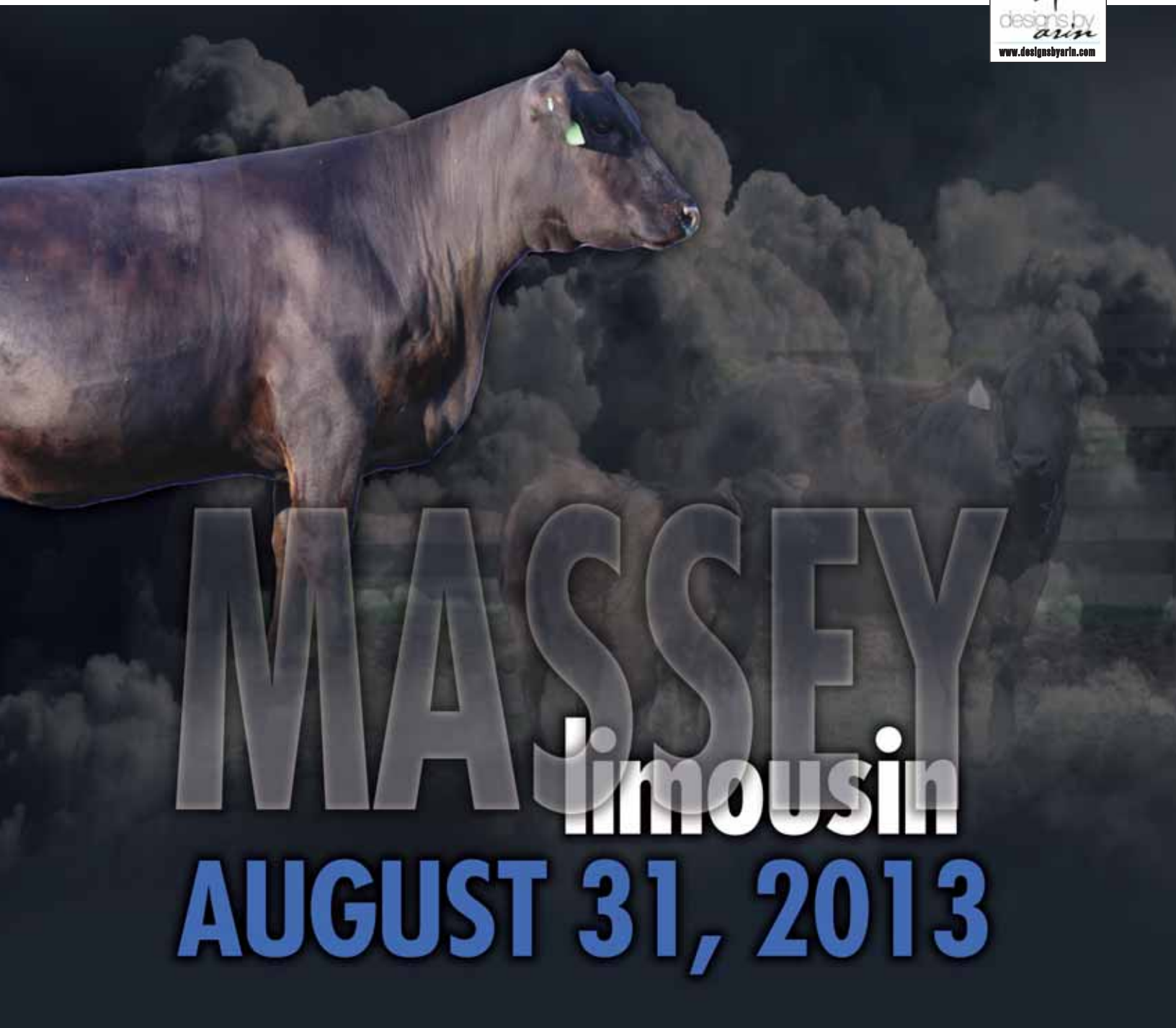


R&R
Marketing Company
PO Box 281677
Nashville, TN 37228

(L#2845)

FIRST CLASS
PRE-SORTED
PAID

Montezuma, Iowa
Permit No. 30



MASSEY
limousin

AUGUST 31, 2013